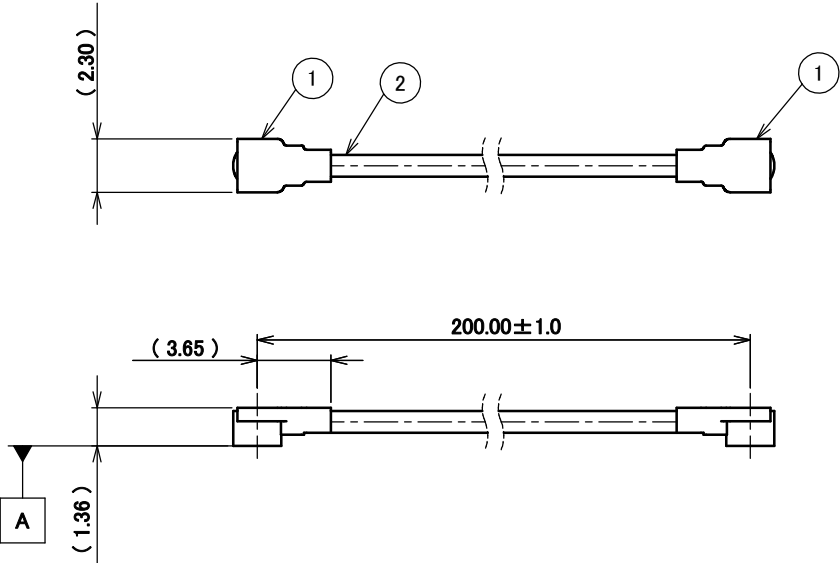
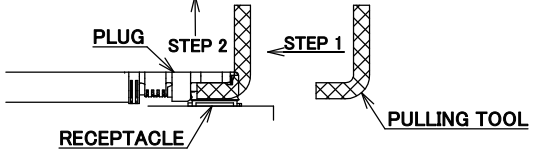


PART NO.
8-23-0114

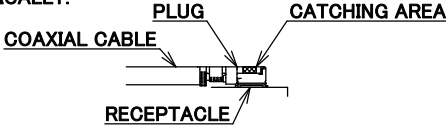
PLEASE CONTACT I-PEX FOR REQUESTS OTHER THAN THIS SPECIFICATIONS.
PLEASE NOTE IF SPECIFICATIONS CHANGE, PART NO. WILL ALSO CHANGE.



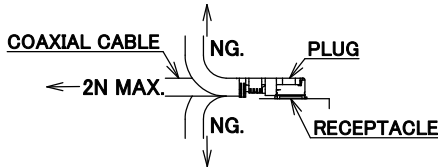
NOTES
 1. SUGGESTIONS FOR MATING & UNMATING OPERATION.
 1-1. MATING
 MATE THE CONNECTOR VERTICALLY,
 ALIGNING THE MATING AXIS ON PLUG AND RECEPTACLE.
 DO NOT SLANT MATE.
 1-2. UNMATING
 1-2-1.
 UNMATING BY PULLING TOOL.
 [P/N 90873-0001 (MHF 4L)]
 USE THE PULLING TOOL AS THE FOLLOWING, AND
 PULL PLUG TO VERTICAL DIRECTION AS DIRECTLY AS POSSIBLE.



1-2-2.
 UNMATING DIRECTLY BY HAND.
 HOLD THE CATCHING AREA ON PLUG AND PULL THE PLUG
 VERTICALLY.



2. PACKING : PLASTIC BAG
 3. PERMISSIBLE LOAD ON THE CABLE AFTER MATING



4. CABLE CRIMP STRENGTH : 15N MIN.
 5. ORIENTATION OF CONNECTORS : 0° ± 45°

2	CABLE	1	AWG#30 Φ 1.37, BRAIDED SHIELD, BLACK
1	CONNECTOR-1, 2	2	MHF 4L Ni Top
NO.	DESCRIPTION	QTY	REMARK

CONSTRUCTIONS

ANGLE	±2°	6 OVER 30 MAX.	±0.3	PROJECTION	SERIES No.	CUSTOMER COPY
6 MAX.	±0.2	30 OVER 120 MAX.	±0.5		H-230031K	
GENERAL TOLERANCE.				TITLE	I-PEX	
DWG.	M.Toida		DATE	MHF®		SCALE
CHK.	K.Yufu		2023/09/25	4L-4L CABLE137-1		X/1
REV.	ECN	BY	DATE	APP.	Y.Hashimoto	UNIT
0	Z231157	TOI	2023/09/25			mm
REVISION RECORD				DWG. No.	8-23-0114	SIZE
						A3
						SHEET
						1/1
						REV.
						0



Halogen Free



RoHS Compliant