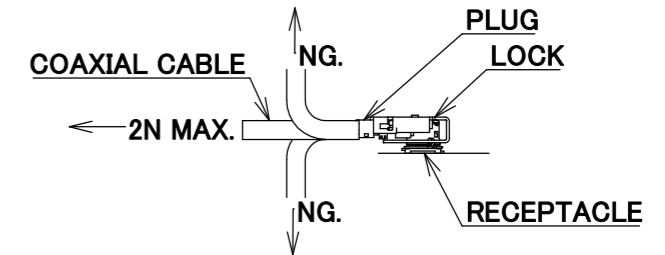


PART NO.  
8-23-0110

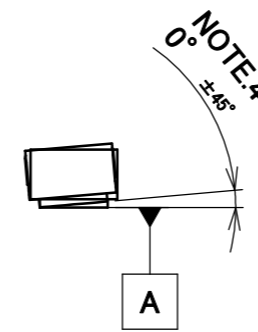
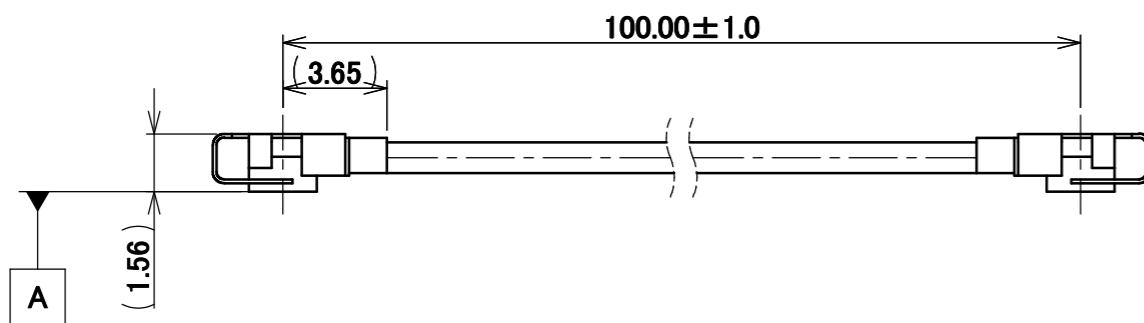
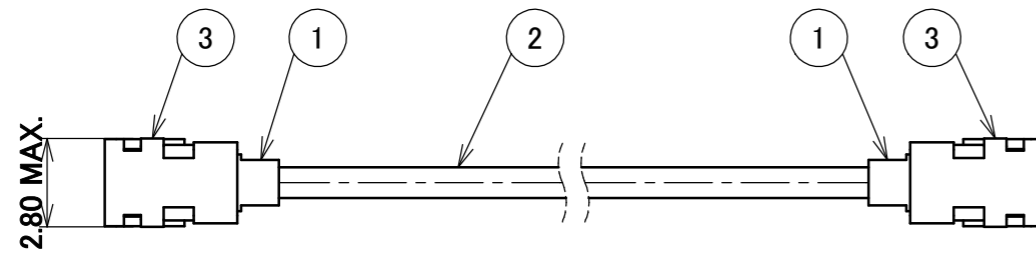
PLEASE CONTACT I-PEX FOR REQUESTS OTHER THAN THIS SPECIFICATIONS.  
PLEASE NOTE IF SPECIFICATIONS CHANGE, PART NO. WILL ALSO CHANGE.

NOTES

1. PACKING : PLASTIC BAG
2. PERMISSIBLE LOAD ON THE CABLE AFTER MATING

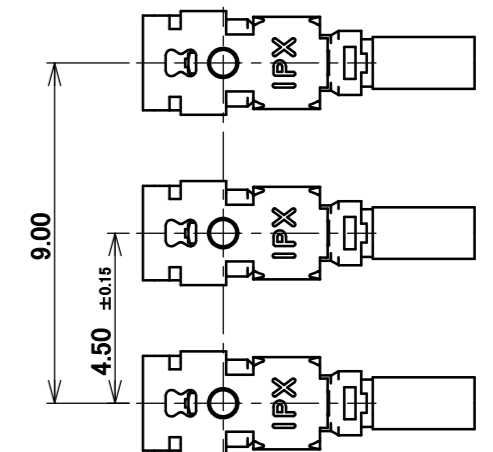
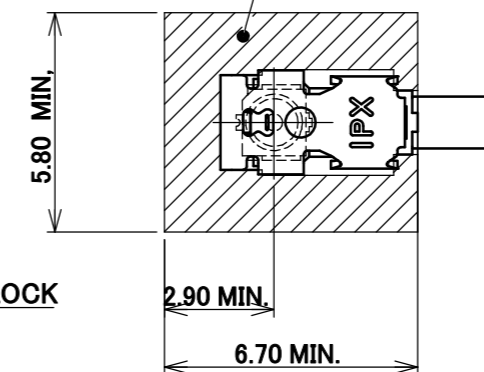


3. CABLE CRIMP STRENGTH : 15N MIN.
4. ORIENTATION OF CONNECTORS :  $0^\circ \pm 45^\circ$
5. TO OPERATE LOCK PART  
FOLLOW I-PEX INSTRUCTION MANUAL HIM-19002.
6. DO NOT ROTATE THE PLUG IN THE MATING CONDITION.



MULTIPLE CONNECTORS LAYOUT

COMPONENTS PLACEMENT PROHIBITED AREA  
REQUIRED AREA FOR RECOMMENDED JIG  
TO OPERATE MHF 4L LK HARNESS IN  
4.50 ± 0.15 mm PITCH (M.2 PITCH) SMOOTHLY.  
JIG PART NUMBER: 91493-0001

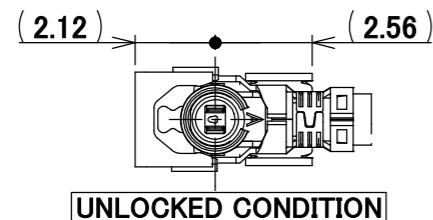


MATING AND LOCK CONDITION  
WITH MHF 4L LK HARNESS NARROW PITCH

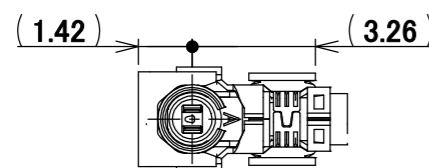
MHF 4L LK HARNESS UNLOCK CONDITION  
NARROW PITCH DIMENSIONS

SINGLE CONNECTOR LAYOUT

COMPONENTS PLACEMENT PROHIBITED AREA  
FOR PLUG 360° ROTATION AND UNMATING AND LOCK  
JIG PART NUMBER: 91166-0001, 91493-0001

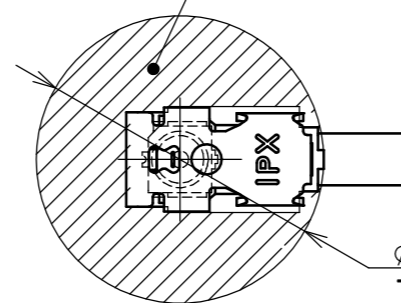


UNLOCKED CONDITION



LOCKED CONDITION

DO NOT MATE WITH RECEPTACLE  
UNDER THIS LOCKED CONDITION.



MATING AND LOCK CONDITION  
WITH MHF 4L LK HARNESS

3	LOCK PART	2	-
2	CABLE	1	AWG#30 $\Phi$ 1.37, BRAIDED SHIELD, BLACK
1	CONNECTOR-1, 2	2	MHF 4L Ni Top
NO.	DESCRIPTION	QTY	REMARK

ANGLE	$\pm 2^\circ$	6 OVER 30 MAX.	$\pm 0.3$	PROJECTION 	SERIES No. H-230031G	CUSTOMER COPY
	6 MAX.	$\pm 0.2$	30 OVER 120 MAX.			
GENERAL TOLERANCE.				TITLE MHF <sup>®</sup> 4L-4L CABLE137-1 +LK	SCALE X:1 UNIT mm	I-PEX
DWG.	M.Toida	DATE	2023/09/25			
CHK.	K.Yufu			DWG. No. 8-23-0110	SIZE A3	SHEET 1/1
REV.	ECN	BY	DATE			
REVISION RECORD				Y.Hashimoto		



Halogen Free



RoHS Compliant

Confidential C

I-PEX Inc.

QKE-DFE06-02 REV.12