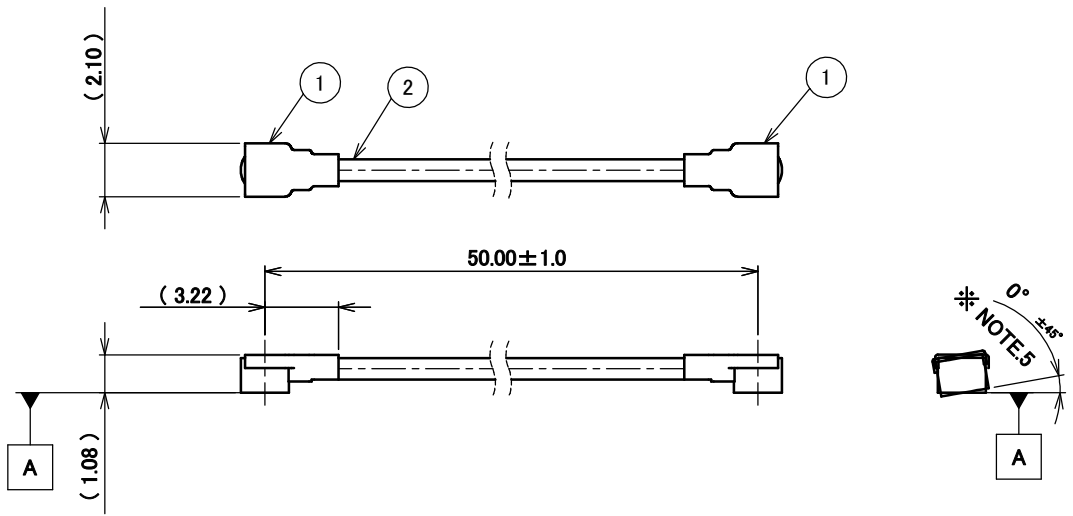
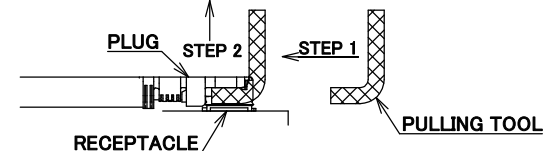


PART NO.
8-23-0115

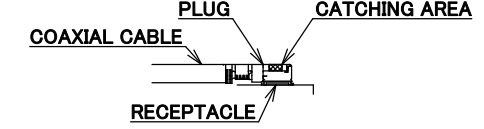
PLEASE CONTACT I-PEX FOR REQUESTS OTHER THAN THIS SPECIFICATIONS.
PLEASE NOTE IF SPECIFICATIONS CHANGE, PART NO. WILL ALSO CHANGE.



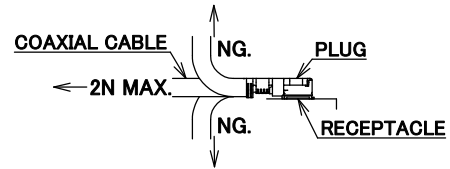
NOTES
 1. SUGGESTIONS FOR MATING & UNMATING OPERATION.
 1-1. MATING
 MATE THE CONNECTOR VERTICALLY,
 ALIGNING THE MATING AXIS ON PLUG AND RECEPTACLE.
 DO NOT SLANT MATE.
 1-2. UNMATING
 1-2-1.
 UNMATING BY PULLING TOOL.
 [P/N 90609-0001 (MHF 4L)]
 USE THE PULLING TOOL AS THE FOLLOWING, AND
 PULL PLUG TO VERTICAL DIRECTION AS DIRECTLY AS POSSIBLE.



1-2-2.
 UNMATING DIRECTLY BY HAND.
 HOLD THE CATCHING AREA ON PLUG AND PULL THE PLUG
 VERTICALLY.



2. PACKING : PLASTIC BAG
 3. PERMISSIBLE LOAD ON THE CABLE AFTER MATING



4. CABLE CRIMP STRENGTH : 15N MIN.
 5. ORIENTATION OF CONNECTORS : 0° ± 45°

2	CABLE	1	AWG#32 Φ 1.13, BRAIDED SHIELD, BLACK
1	CONNECTOR-1, 2	2	MHF 4L Ni Top
NO.	DESCRIPTION	QTY	REMARK

CONSTRUCTIONS

ANGLE	±2°	6 OVER 30 MAX.	±0.3	PROJECTION	SERIES No.	CUSTOMER COPY		
6 MAX.	±0.2	30 OVER 120 MAX.	±0.5		H-230031L			
GENERAL TOLERANCE.				TITLE	SCALE	I-PEX		
DWG.	M.Toida	DATE	2023/09/25	MHF®	X/1			
CHK.	K.Yufu			4L-4L CABLE113-1	UNIT			
REV.	ECN	BY	DATE	APP.	mm			
REVISION RECORD				APP.	DWG. No.	SIZE	SHEET	REV.
				Y.Hashimoto	8-23-0115	A3	1/1	0

