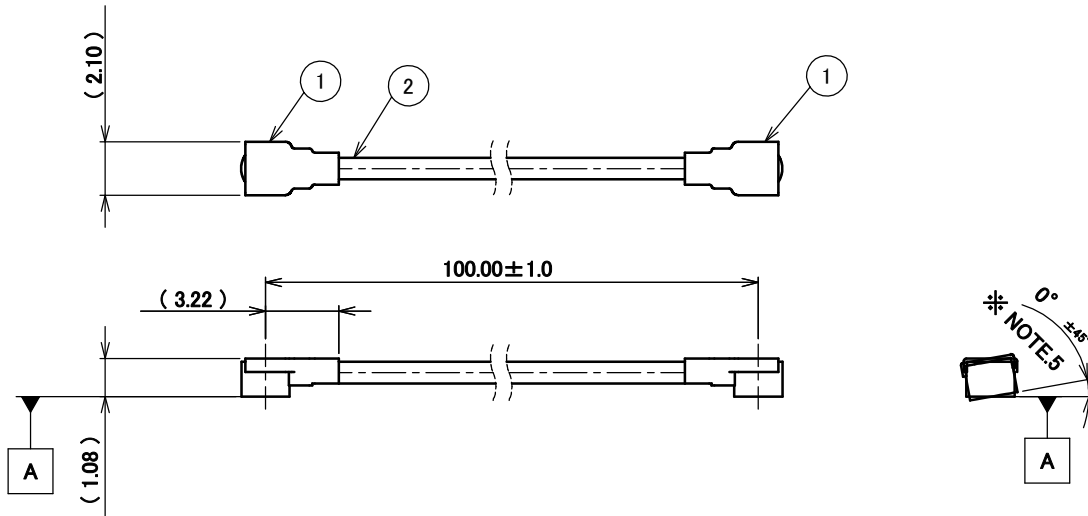


PART NO.

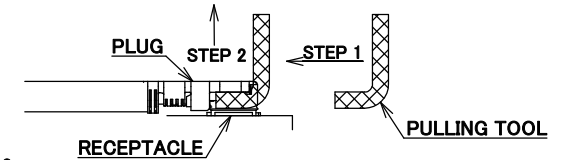
8-23-0112

PLEASE CONTACT I-PEX FOR REQUESTS OTHER THAN THIS SPECIFICATIONS.  
PLEASE NOTE IF SPECIFICATIONS CHANGE, PART NO. WILL ALSO CHANGE.

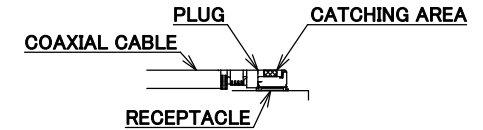


NOTES

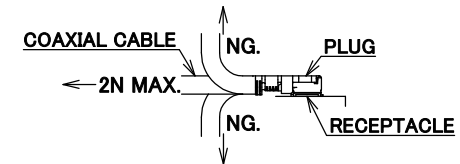
1. SUGGESTIONS FOR MATING & UNMATING OPERATION.
  - 1-1. MATING  
MATE THE CONNECTOR VERTICALLY, ALIGNING THE MATING AXIS ON PLUG AND RECEPTACLE. DO NOT SLANT MATE.
  - 1-2. UNMATING
    - 1-2-1.  
UNMATING BY PULLING TOOL.  
[P/N 90609-0001 (MHF 4L)]  
USE THE PULLING TOOL AS THE FOLLOWING, AND PULL PLUG TO VERTICAL DIRECTION AS DIRECTLY AS POSSIBLE.



- 1-2-2.  
UNMATING DIRECTLY BY HAND.  
HOLD THE CATCHING AREA ON PLUG AND PULL THE PLUG VERTICALLY.



2. PACKING : PLASTIC BAG
3. PERMISSIBLE LOAD ON THE CABLE AFTER MATING



4. CABLE CRIMP STRENGTH : 15N MIN.
5. ORIENTATION OF CONNECTORS : 0° ± 45°

2	CABLE	1	AWG#32 Φ 1.13, BRAIDED SHIELD, BLACK
1	CONNECTOR-1, 2	2	MHF 4L Ni Top
NO.	DESCRIPTION	QTY	REMARK

CONSTRUCTIONS

ANGLE	±2°	6 OVER 30 MAX.	±0.3	PROJECTION	SERIES No.	CUSTOMER COPY
6 MAX.	±0.2	30 OVER 120 MAX.	±0.5		H-2300311	
GENERAL TOLERANCE.				TITLE	I-PEX	
DWG.	M.Toida		DATE	MHF®		SCALE
CHK.	K.Yufu		2023/09/25	4L-4L CABLE113-1		X/1
REV.	ECN	BY	DATE	APP.	DWG. No.	UNIT
0	Z231157	TOI	2023/09/25	Y.Hashimoto	8-23-0112	mm
REVISION RECORD				SIZE	SHEET	REV.
				A3	1/1	0



Halogen Free



RoHS Compliant