

PART NO.
8-21-0043



Halogen Free



RoHS Compliant

PLEASE CONTACT I-PEX FOR REQUESTS OTHER THAN THIS SPECIFICATIONS.
PLEASE NOTE IF SPECIFICATIONS CHANGE, PART NO. WILL ALSO CHANGE.

NOTES

1. SUGGESTIONS FOR MATING & UNMATING OPERATION.

1-1. MATING

MATE THE CONNECTOR VERTICALLY,
ALIGNING THE MATING AXIS ON PLUG AND RECEPTACLE.
DO NOT SLANT MATE.

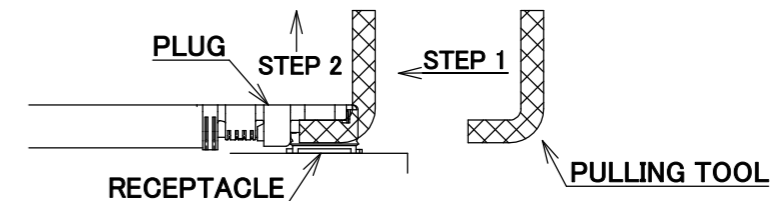
1-2. UNMATING

1-2-1.

UNMATING BY PULLING TOOL.

[P/N 90609-0001 (MHF 4L),]

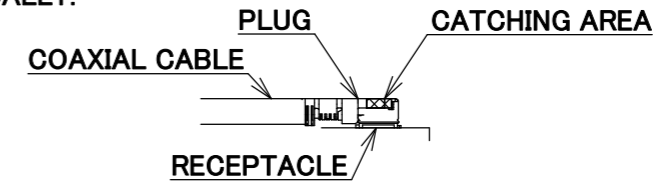
USE THE PULLING TOOL AS THE FOLLOWING, AND
PULL PLUG TO VERTICAL DIRECTION AS DIRECTLY AS POSSIBLE.



1-2-2.

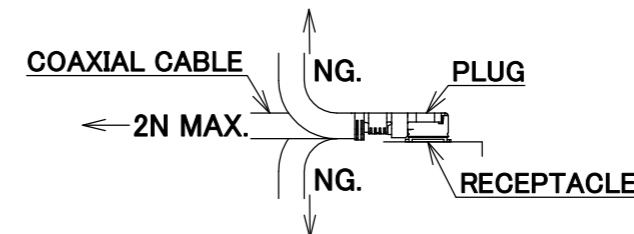
UNMATING DIRECTLY BY HAND.

HOLD THE CATCHING AREA ON PLUG AND PULL THE PLUG
VERTICALLY.



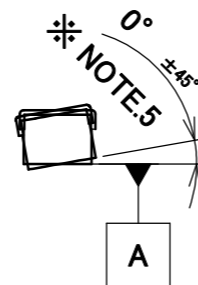
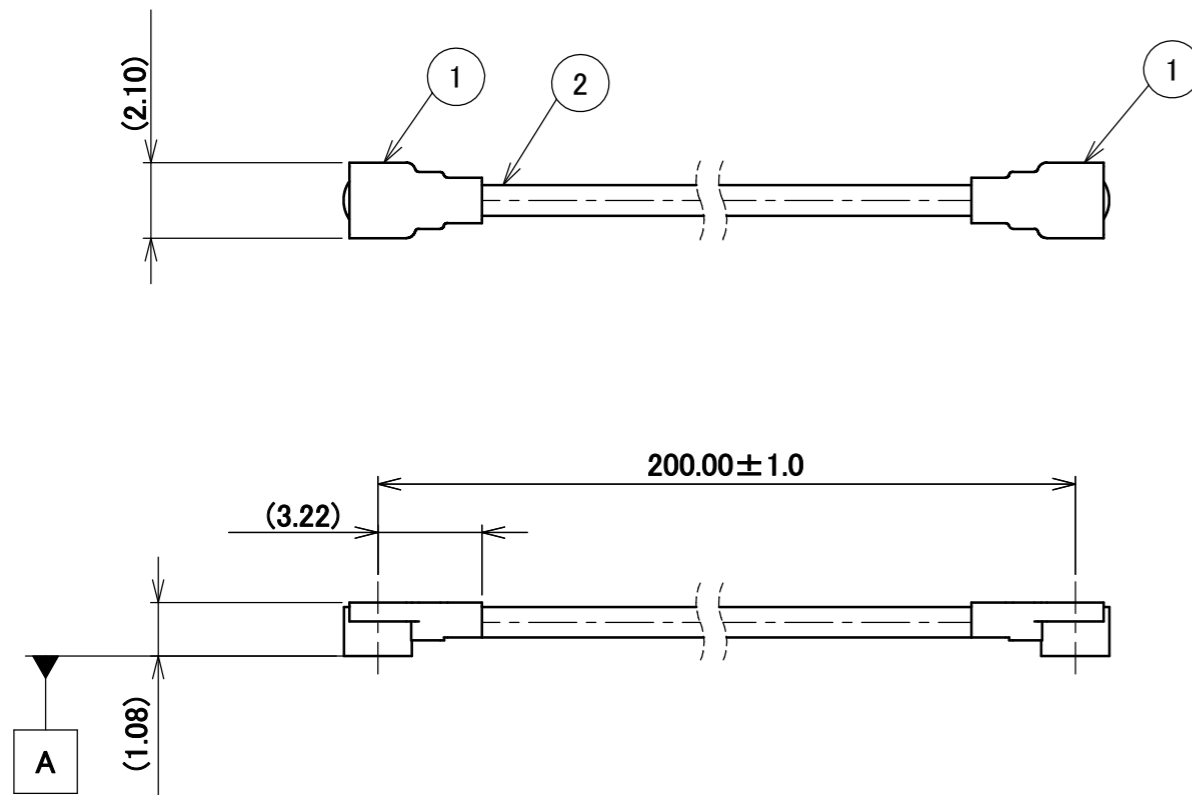
2. PACKING : PLASTIC BAG

3. PERMISSIBLE LOAD ON THE CABLE AFTER MATING



4. CABLE CRIMP STRENGTH : 15N MIN.

5. ORIENTATION OF CONNECTORS : 0° ±45°



2	CABLE	1	AWG#32 Φ 1.13, BRAIDED SHIELD, BLACK
1	CONNECTOR-1, 2	2	MHF 4L Ni Top
NO.	DESCRIPTION	QTY	REMARK

CONSTRUCTIONS

ANGLE	±2°	6 OVER 30 MAX.	±0.3	PROJECTION	SERIES No.	CUSTOMER COPY		
		6 MAX.	±0.2	30 OVER 120 MAX.	±0.5		H-230031A	
GENERAL TOLERANCE.				TITLE	SCALE			
DWG.	M.Toida	DATE	2023/09/22	MHF®	X/1			
CHK.	K.Yufu			4L-4L CABLE113-1	UNIT			
APP.	Y.Hashimoto			DWG. No.	8-21-0043	mm		
REV.	ECN	BY	DATE	APP.		SIZE	SHEET	REV.
0	Z231129	TOI	2023/09/22			A3	1/1	0