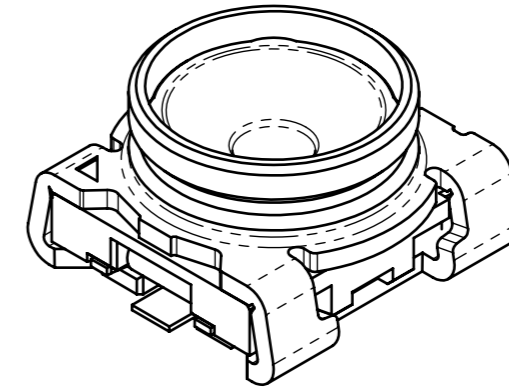
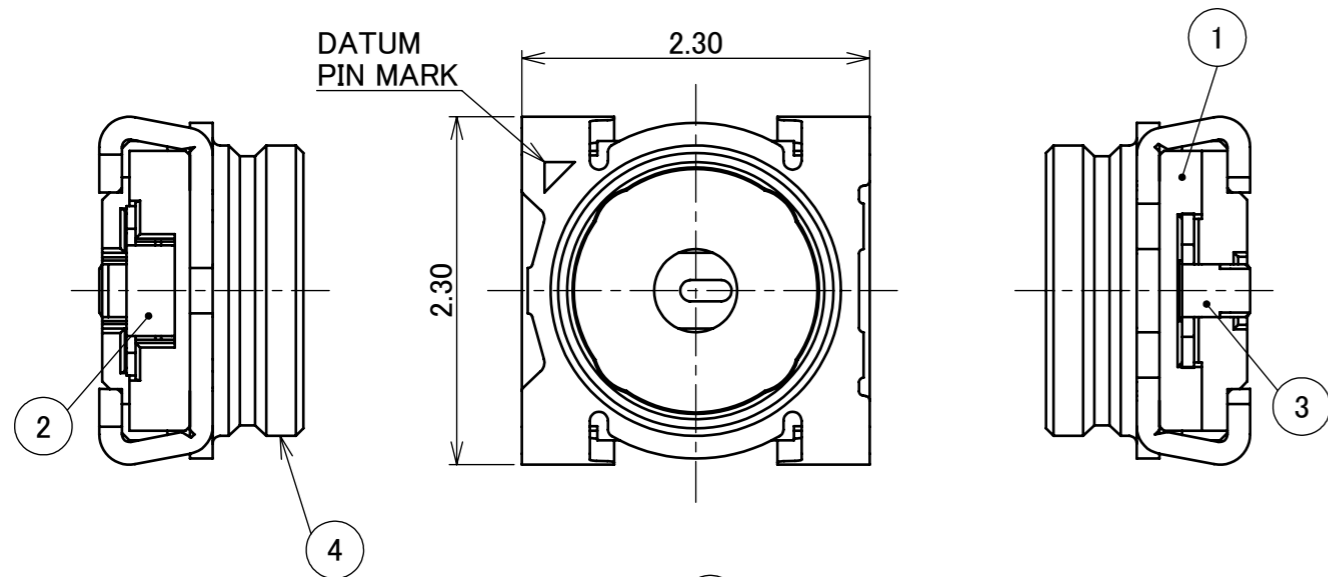
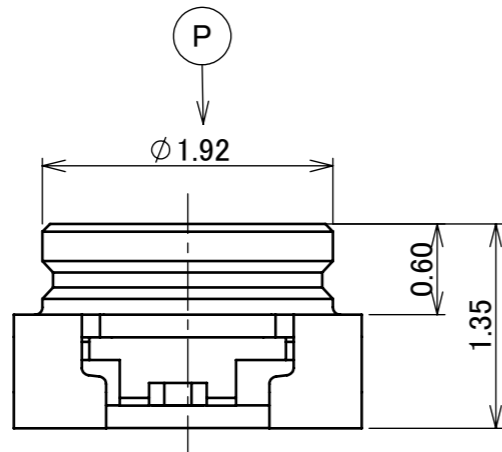


Recommended P/N 20549-001E

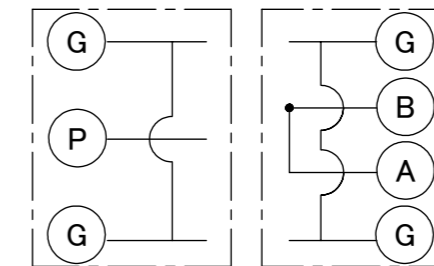
PART NO.	PACKING QUANTITY
20549-001E	10,000/REEL
20549-001E-01	2,500/REEL



- NOTES.
1. COPLANARITY : 0.1MAX.
  2. RoHS COMPLIANT.
  3. CIRCUIT OF SWITCH

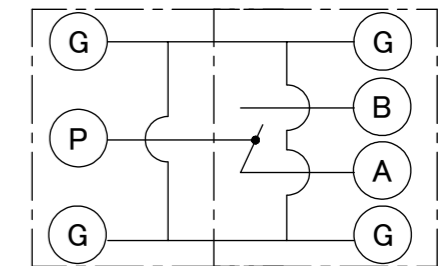


ON STATE  
(NOT MATED WITH THE  
CONVERSION ADAPTER)

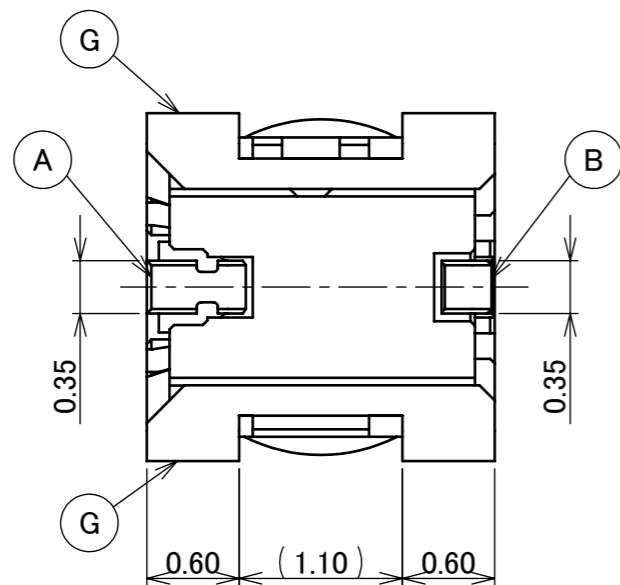


CONVERSION ADAPTER MHF-SW23 ASS'Y

OFF STATE  
(MATED WITH THE  
CONVERSION ADAPTER)



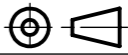
CONVERSION ADAPTER MHF-SW23 ASS'Y

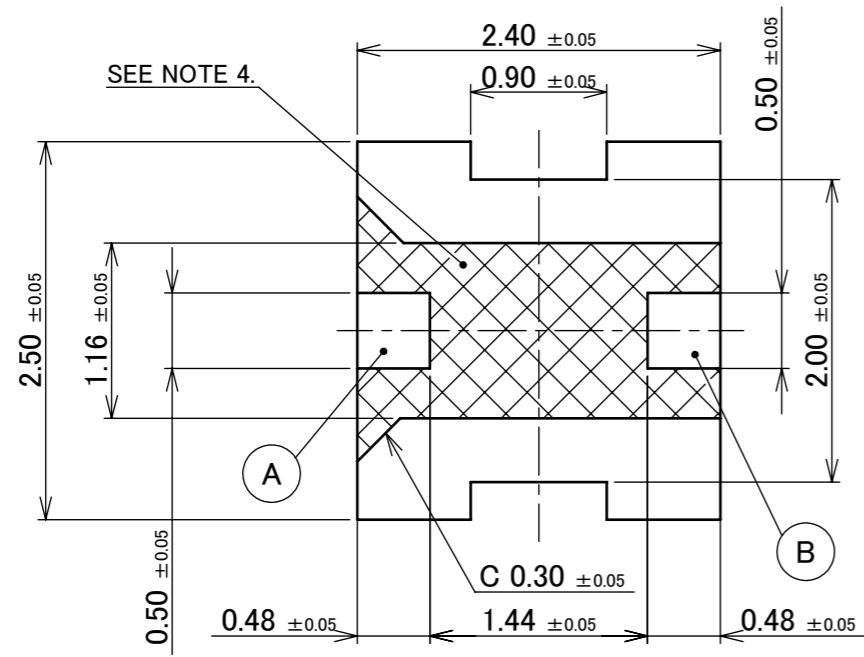


4	GROUND CONTACT	PHOSPHOR BRONZE	ALL OVER Ni 1.00 μm MIN. CONTACT PART Au 0.02 μm MIN. SOLDERING PART Au 0.02 μm MIN.
3	CONTACT B	PHOSPHOR BRONZE	ALL OVER Ni 1.00 μm MIN. CONTACT PART Au 0.2 μm MIN. SOLDERING PART Au 0.02 μm MIN.
2	CONTACT A	CORSON ALLOY	ALL OVER Ni 1.00 μm MIN. CONTACT PART Au 0.2 μm MIN. SOLDERING PART Au 0.02 μm MIN.
1	HOUSING	LCP	UL94V-0, BLACK
NO.	DESCRIPTION	MATERIAL	FINISH , REMARKS

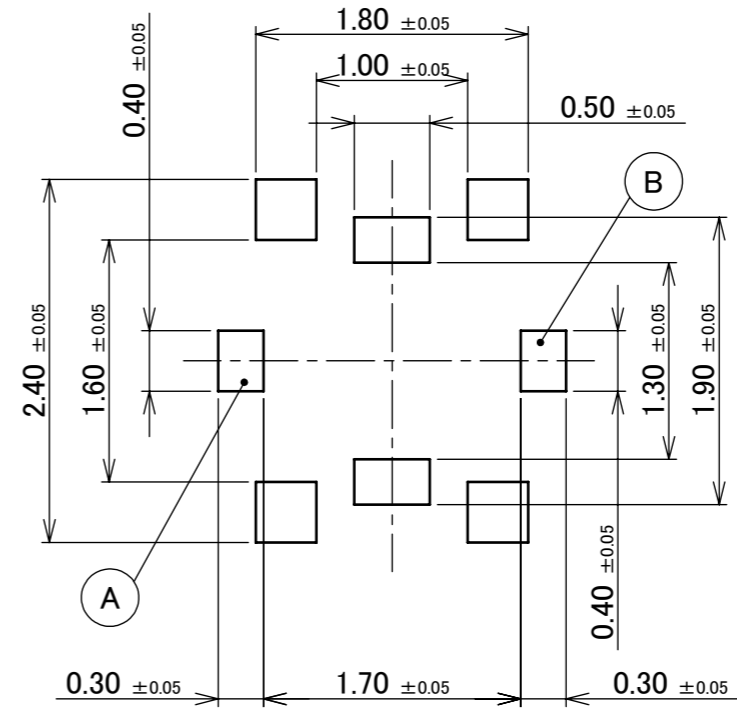
9	Z210864	K.M	2021/07/30	M.T	ANGLE	±2°	6 OVER 30 MAX.	±0.3	PROJECTION ⊕	SERIES No. R11	CUSTOMER COPY		
8	Z200013	Haji	2020/01/08	Y.S	6 MAX.	±0.2	30 OVER 120 MAX.	±0.5					
7	Z181273	Y.I	2018/09/28	Ken	GENERAL TOLERANCE.				TITLE MHF® -SW23	SCALE 20:1	UNIT mm	I-PEX	
6	Z180599	M.N	2018/05/09	Ken	DWG.	DATE							
5	Z170101	Y.I	2017/01/27	Ken	Y.Hashimoto		2011/12/09						
4	Z150210	T.S	2015/02/25	Tom	CHK.	K.Yotsutani		2011/12/09					
REV.	ECN	BY	DATE	APP.	APP.	E.Kawabe		2011/12/09	DWG. No.	20549	SIZE	SHEET	REV.
REVISION RECORD					E.Kawabe		2011/12/09		20549		A3	1/6	9

ITEMS	SPECIFICATION	
	CONNECTOR PART NO.	20549-001E
RATING POWER	2 W	
RATING FREQUENCY	DC ~ 11.0 GHz	
OPERATING TEMPERATURE	233 ~ 358 K (-40°C ~ +85°C)	
OPERATING HUMIDITY	90% MAX. (NON-CONDENSING)	
VSWR	1.2 MAX. AT DC ~ 2.5 GHz, 1.3 MAX. AT 2.5 GHz ~ 6.0 GHz, 1.5 MAX. AT 6.0 GHz ~ 11.0 GHz	
MAIN CONTACT RESISTANCE	100 mohm MAX	
GROUND CONTACT RESISTANCE	100 mohm MAX	
INSULATION RESISTANCE	INITIAL: 1000 Mohm MIN. / AFTER TEST: 10 Mohm MIN.	
DIELECTRIC WITHSTANDING VOLTAGE	100 V AC, 1 MINUTE	
DURABILITY	100 CYCLES	
PRODUCT SPECIFICATION	PRS-1672	
TEST REPORT	TR-12041	
PACKING STANDARD	300-991	PST-12025
INSTRUCTION MANUAL	HIM-13004	
APPEARANCE CRITERIA No.	QLS-A***	

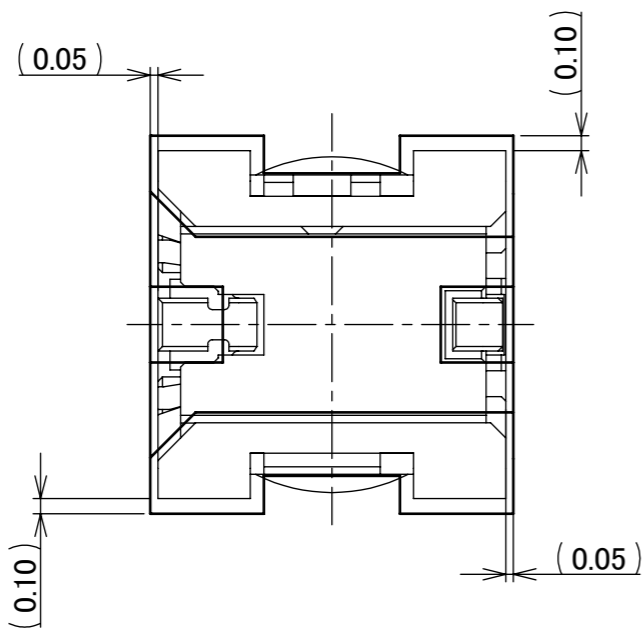
ANGLE	±2°	6 OVER 30 MAX.	±0.3	PROJECTION 	SERIES No. R11	CUSTOMER COPY		
6 MAX.	±0.2	30 OVER 120 MAX.	±0.5					
GENERAL TOLERANCE.				TITLE MHF® -SW23	SCALE -	<b>I-PEX</b>		
DWG.	DATE							
CHK.								
APP.								
				DWG. No.	20549	SIZE A3	SHEET 2/6	REV. 9



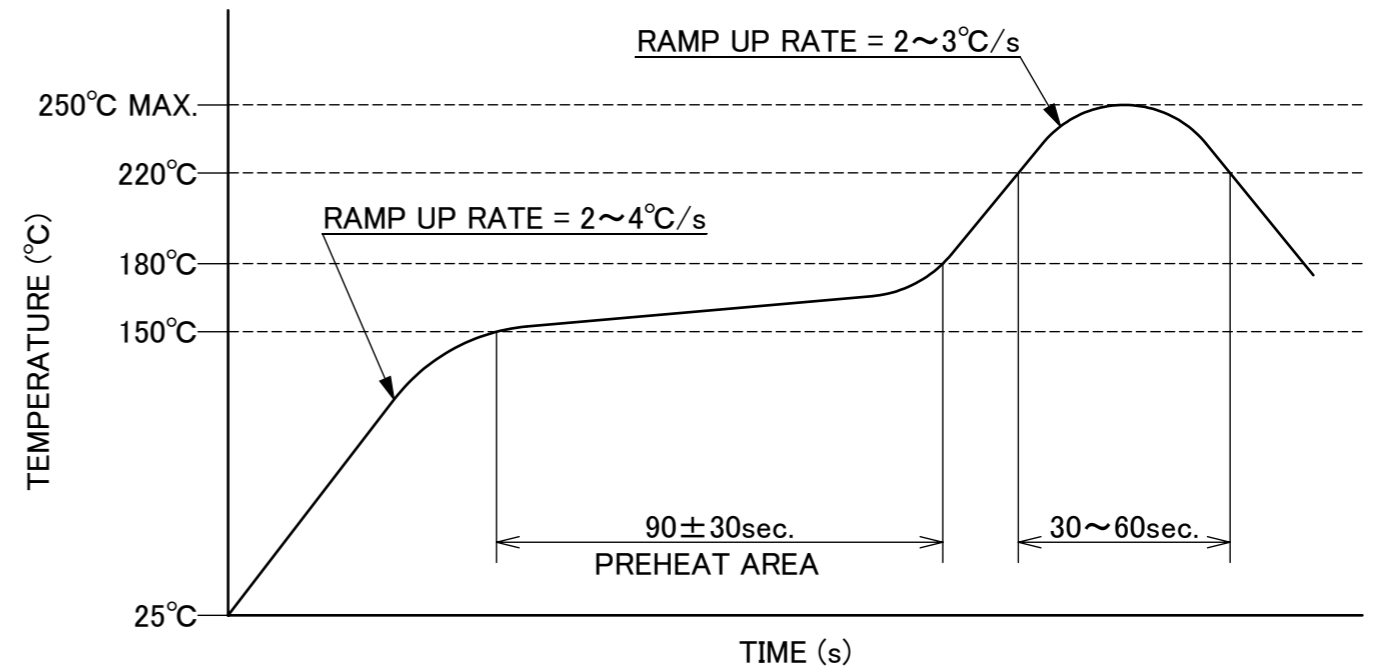
**RECOMMENDED FOOTPRINT PATTERN**



**MASK THICKNESS: t = 0.1  
METAL MASK**



**CONNECTOR ON RECOMMENDED FOOTPRINT PATTERN**

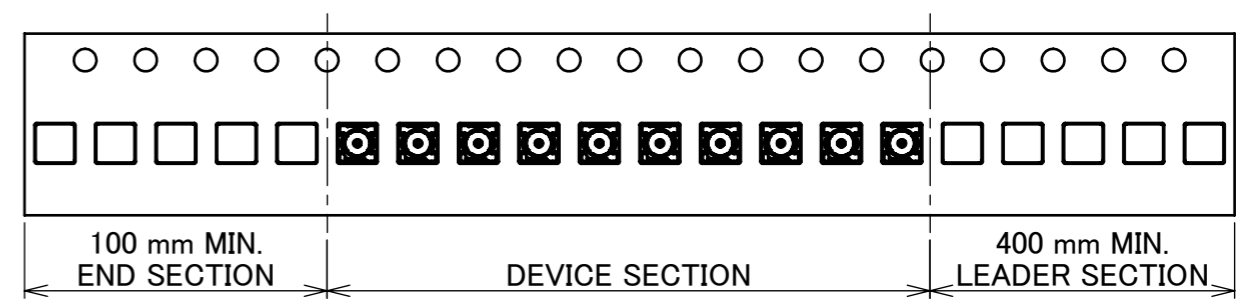
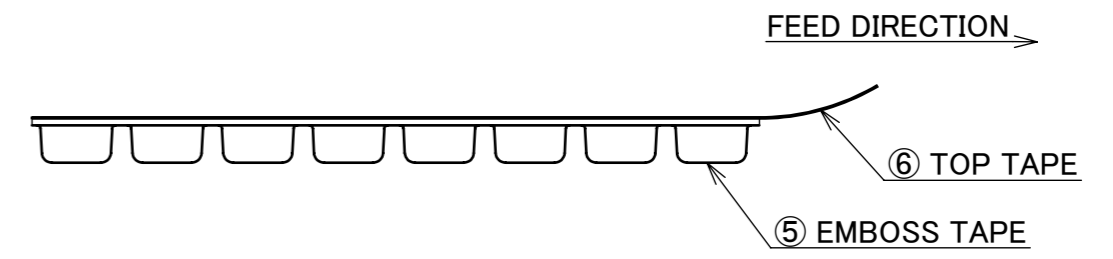
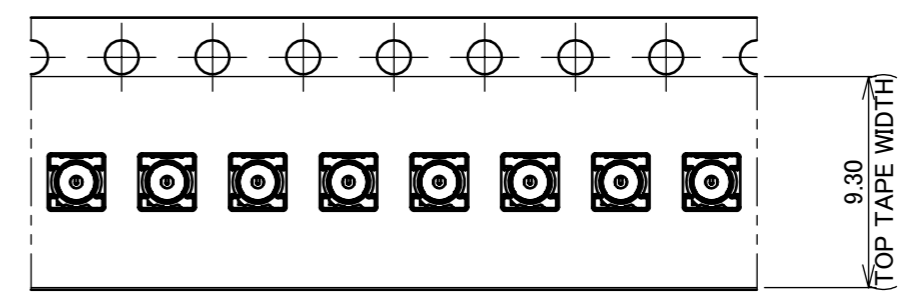
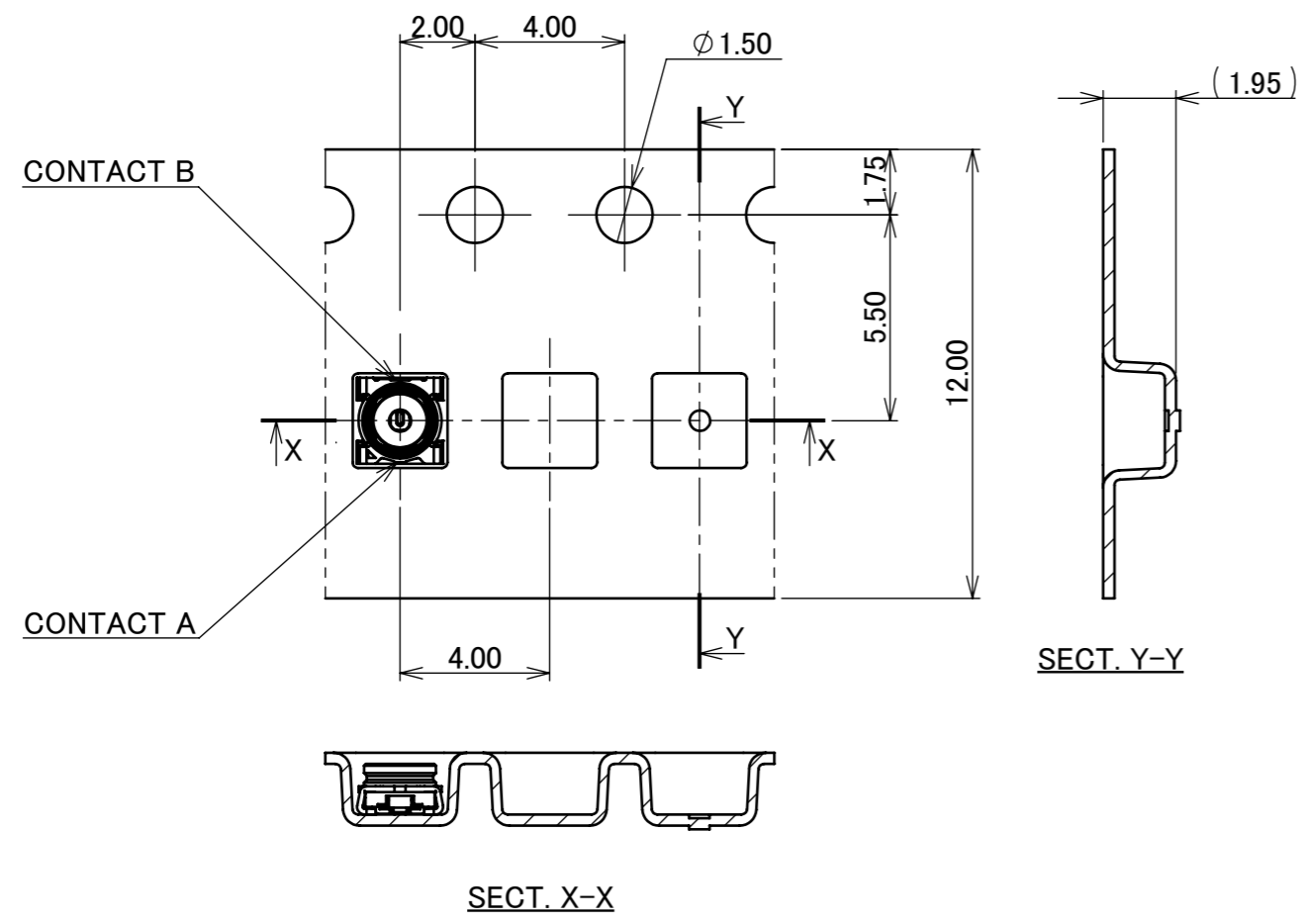
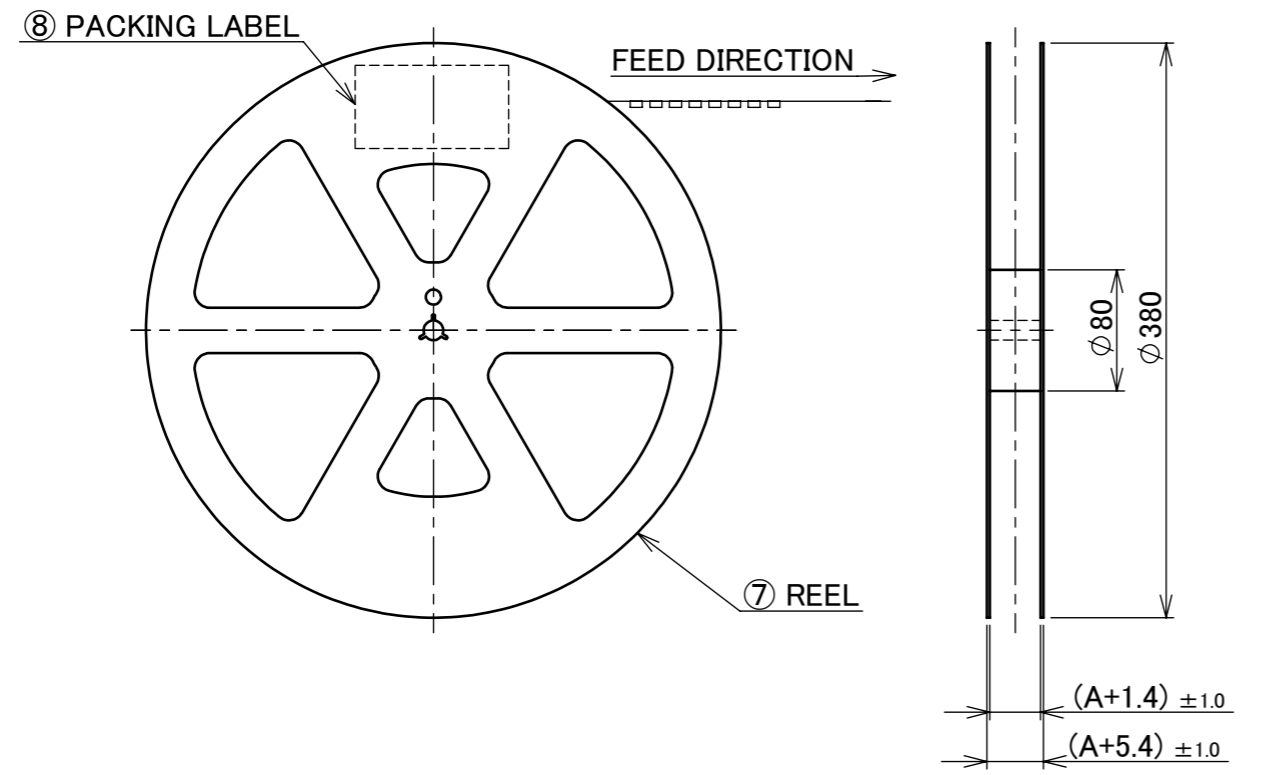


**REFLOW TEMPERATURE PROFILE  
SENJU METAL INDUSTRY CO., LTD. : M705-SHF(Sn96.5 Ag3.0 Cu0.5)**

NOTES  
4. PATTERN AND RESISTPROHIBITION AREA

ANGLE	±2°	6 OVER 30 MAX.	±0.3	PROJECTION ⊕	SERIES No. R11	CUSTOMER COPY			
	6 MAX.	±0.2	30 OVER 120 MAX.						±0.5
GENERAL TOLERANCE.				TITLE MHF® -SW23		SCALE	<b>I-PEX</b>		
DWG.	DATE					20:1			
CHK.						UNIT mm			
APP.				DWG. No.	20549	SIZE A3	SHEET 3/6	REV. 9	

PART NO.	A	QTY. PER EMBOSS REEL (PIECES / REEL)	QTY. PER PACKING CARTON (REELS / CARTON)
20549-001E	12	10,000 PIECES / REEL	10 REELS / CARTON = 100,000 PIECES

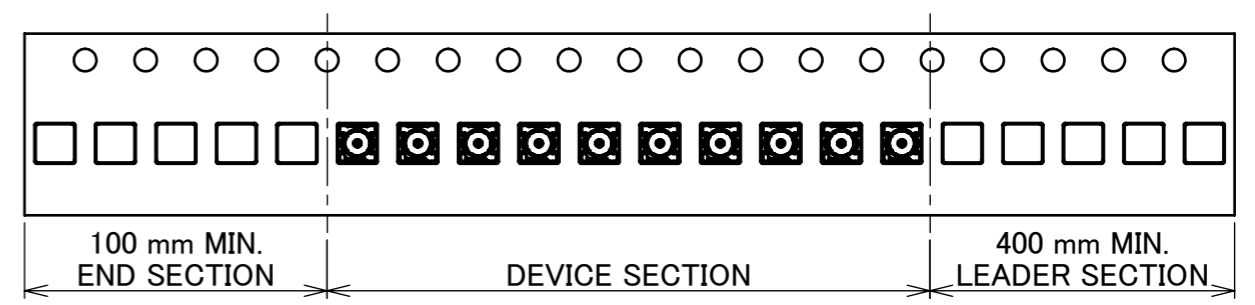
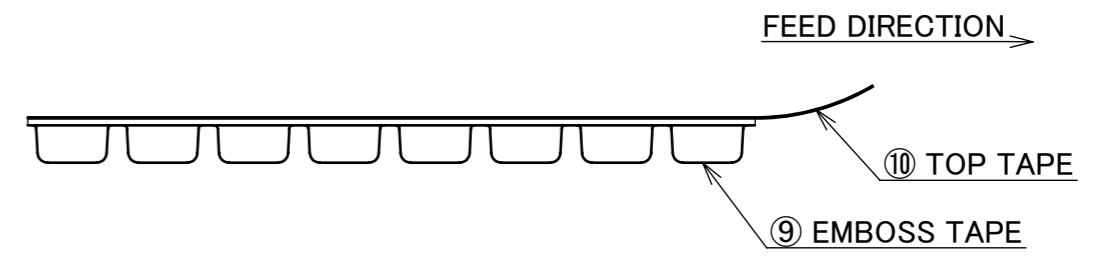
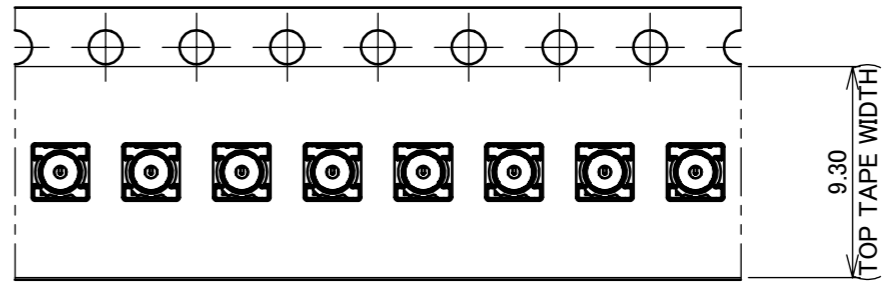
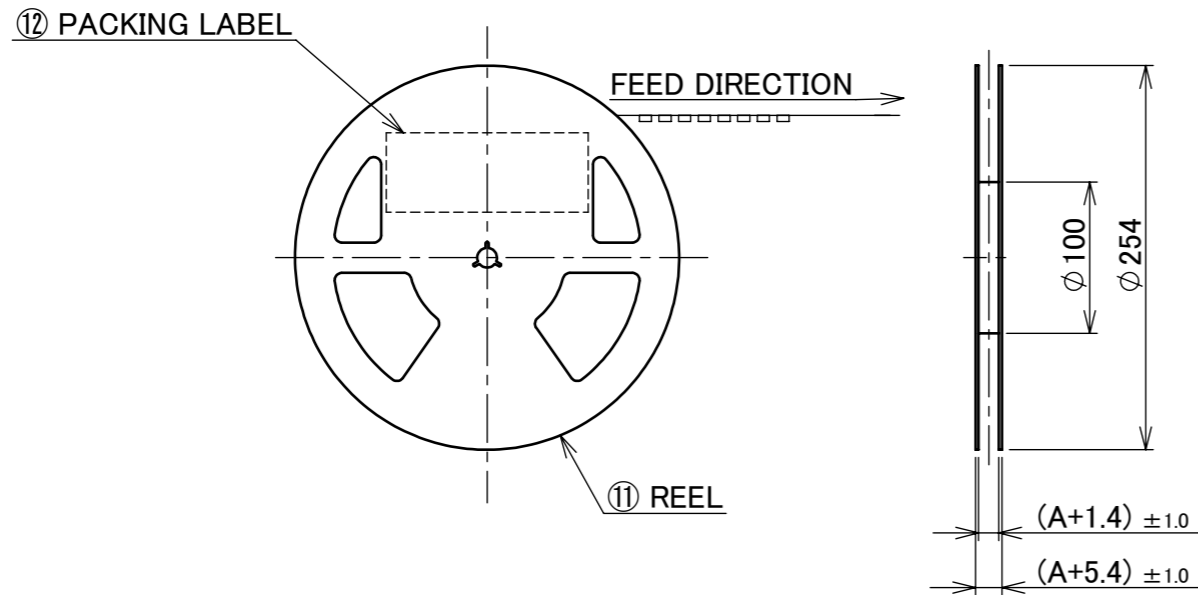


- NOTES.
- TAPING SPECIFICATION FOLLOWS JIS C 0806 (IEC 60286-3).
  - MAKE EMPTY SECTION OF LEADER AND END ON EACH END OF THE TAPE.
  - TOP TAPE SHALL NOT STICK OUT FROM EMBOSS TAPE.
  - TOP TAPE SHALL NOT COVER FEED HOLE.

8	PACKING LABEL	-	-
7	REEL	PS	ANTI-STATIC TYPE BLACK
6	TOP TAPE	PET t=0.062 TRANSPARENCY	ANTI-STATIC TYPE
5	EMBOSS TAPE	PS t=0.3 TRANSPARENCY	ANTI-STATIC TYPE
NO.	DESCRIPTION	MATERIAL	FINISH , REMARKS

ANGLE	$\pm 2^\circ$	6 OVER 30 MAX.	$\pm 0.3$	PROJECTION 	SERIES No. R11	CUSTOMER COPY		
6 MAX.	$\pm 0.2$	30 OVER 120 MAX.	$\pm 0.5$					
GENERAL TOLERANCE.				TITLE MHF® -SW23	SCALE -	<b>I-PEX</b>		
DWG.	DATE							
CHK.								
APP.								
				DWG. No.	20549	SIZE A3	SHEET 4/6	REV. 9

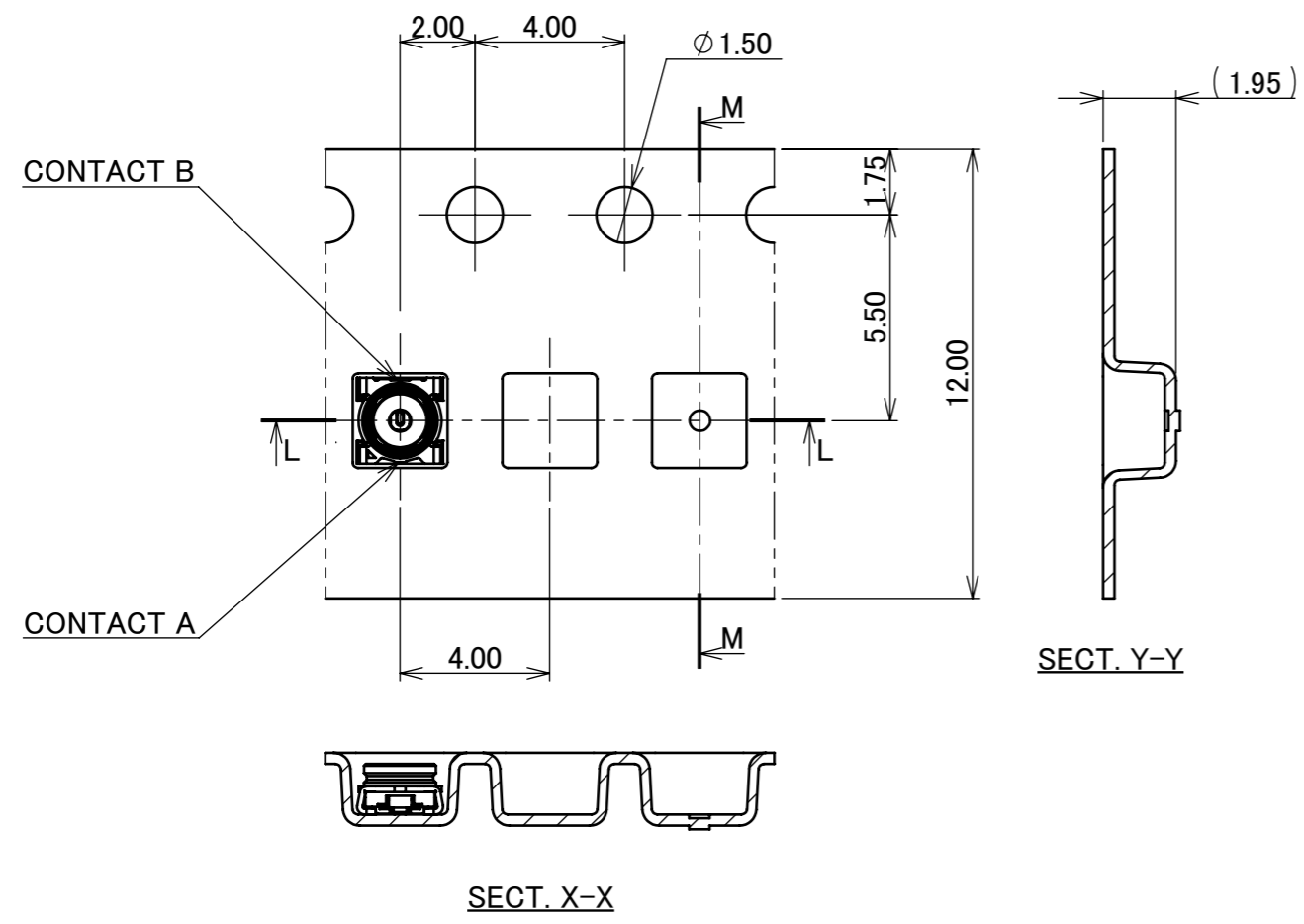
PART NO.	A	QTY. PER EMBOSS REEL (PIECES / REEL)	QTY. PER PACKING CARTON (REELS / CARTON)
20549-001E-01	12	2,500 PIECES / REEL	10 REELS / CARTON = 25,000 PIECES

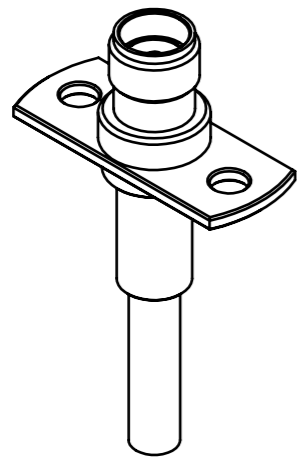


- NOTES.
- TAPING SPECIFICATION FOLLOWS JIS C 0806 (IEC 60286-3).
  - MAKE EMPTY SECTION OF LEADER AND END ON EACH END OF THE TAPE.
  - TOP TAPE SHALL NOT STICK OUT FROM EMBOSS TAPE.
  - TOP TAPE SHALL NOT COVER FEED HOLE.

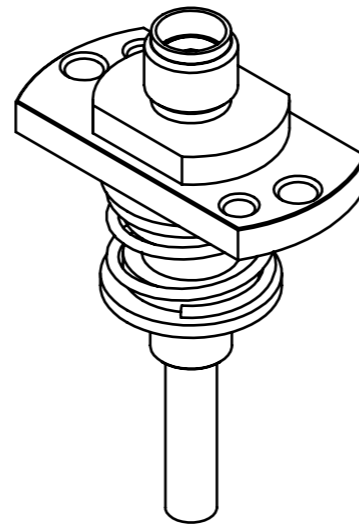
NO.	DESCRIPTION	MATERIAL	FINISH, REMARKS
12	PACKING LABEL	-	-
11	REEL	PS	ANTI-STATIC TYPE BLACK
10	TOP TAPE	PET t=0.062 TRANSPARENCY	ANTI-STATIC TYPE
9	EMBOSS TAPE	PS t=0.3 TRANSPARENCY	ANTI-STATIC TYPE

ANGLE	±2°	6 OVER 30 MAX.	±0.3	PROJECTION ⊕	SERIES No. R11	CUSTOMER COPY				
	6 MAX.	±0.2	30 OVER 120 MAX.					±0.5		
GENERAL TOLERANCE.				TITLE	SCALE -	I-PEX				
DWG.	DATE			MHF® -SW23				UNIT	mm	
CHK.								SIZE		SHEET 5/6
APP.				DWG. No.				20549		

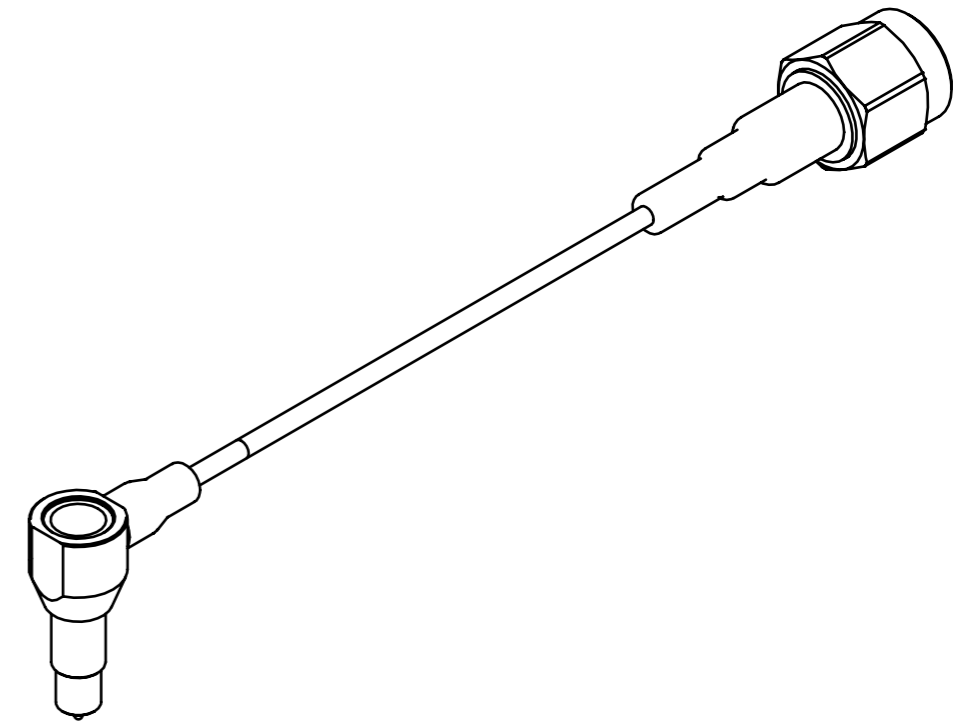




MHF-SW23 RECEPTACLE HIGH CYCLE SMA ADAPTER  
PART NO. 90604-0001



MHF-SW23 RECEPTACLE HIGH CYCLE F SMA ADAPTER  
PART NO. 90605-0001



MHF-SW23 SMA ADAPTER CABLE  
PART NO. 90582-0\*00

ANGLE	±2°	6 OVER 30 MAX.	±0.3	PROJECTION 	SERIES No. R11	CUSTOMER COPY		
6 MAX.	±0.2	30 OVER 120 MAX.	±0.5					
GENERAL TOLERANCE.				TITLE MHF® -SW23	SCALE 2:1	UNIT <b>I-PEX</b>		
DWG.	DATE							
CHK.								
APP.								
				DWG. No.	20549	SIZE A3	SHEET 6/6	REV. 9