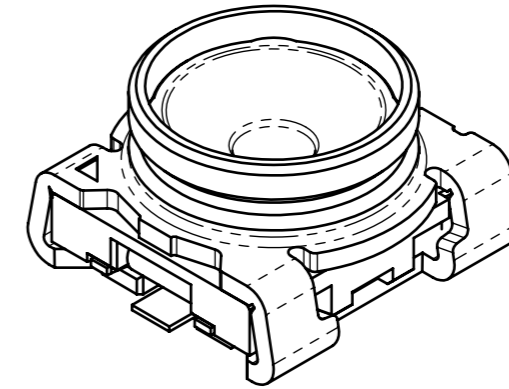
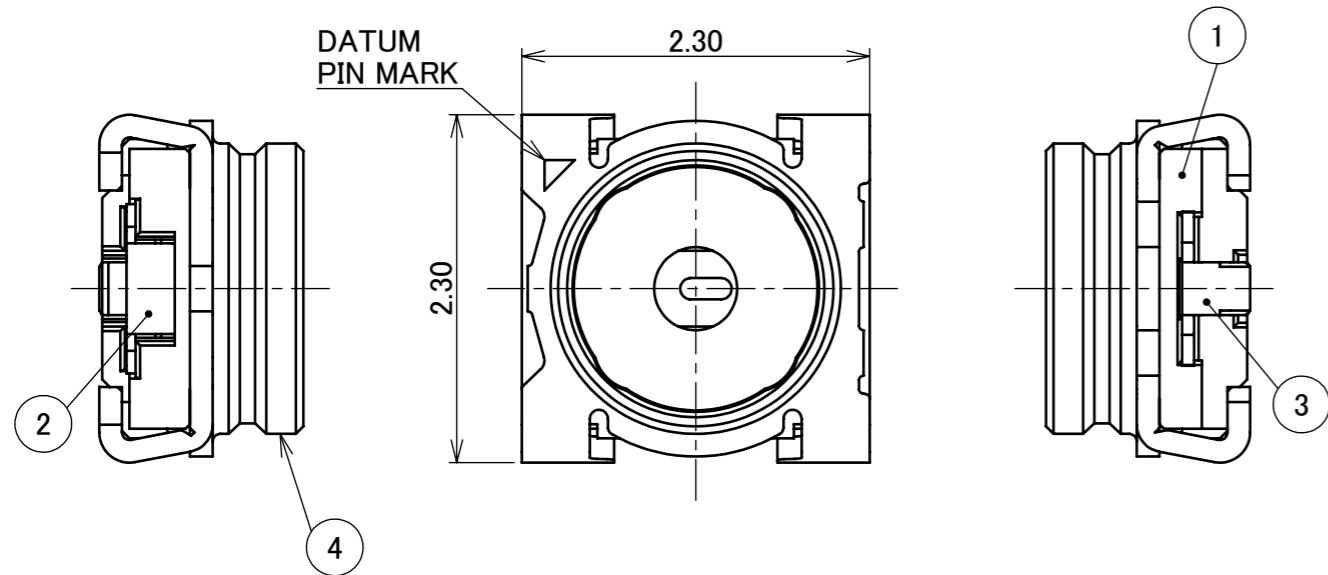
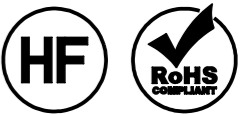
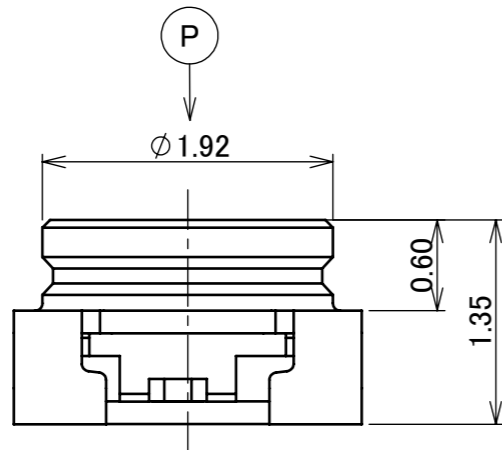


Recommended P/N 20549-001E

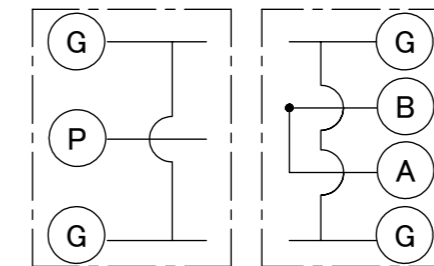
PART NO.	PACKING QUANTITY
20549-001E	10,000/REEL
20549-001E-01	2,500/REEL



- NOTES.
1. COPLANARITY : 0.1MAX.
 2. RoHS COMPLIANT.
 3. CIRCUIT OF SWITCH

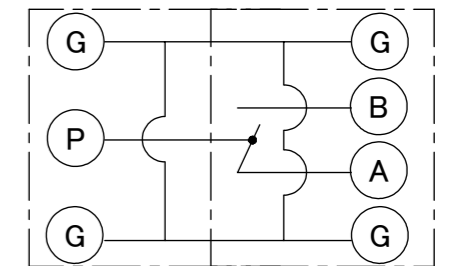


ON STATE
(NOT MATED WITH THE
CONVERSION ADAPTER)

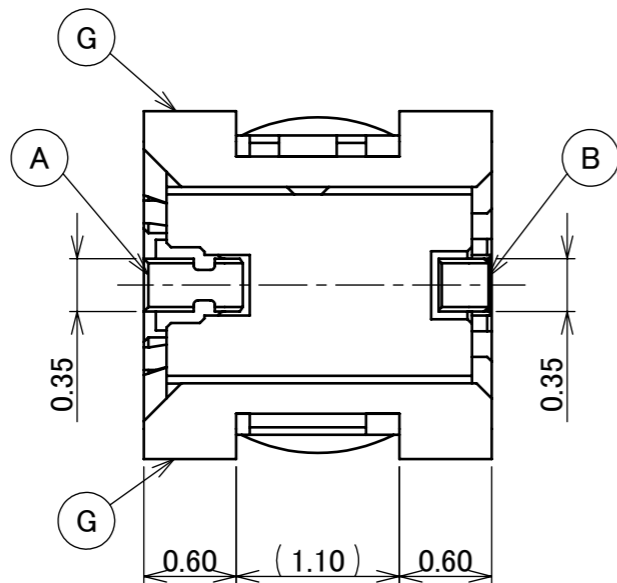


CONVERSION ADAPTER MHF-SW23 ASS'Y

OFF STATE
(MATED WITH THE
CONVERSION ADAPTER)



CONVERSION ADAPTER MHF-SW23 ASS'Y



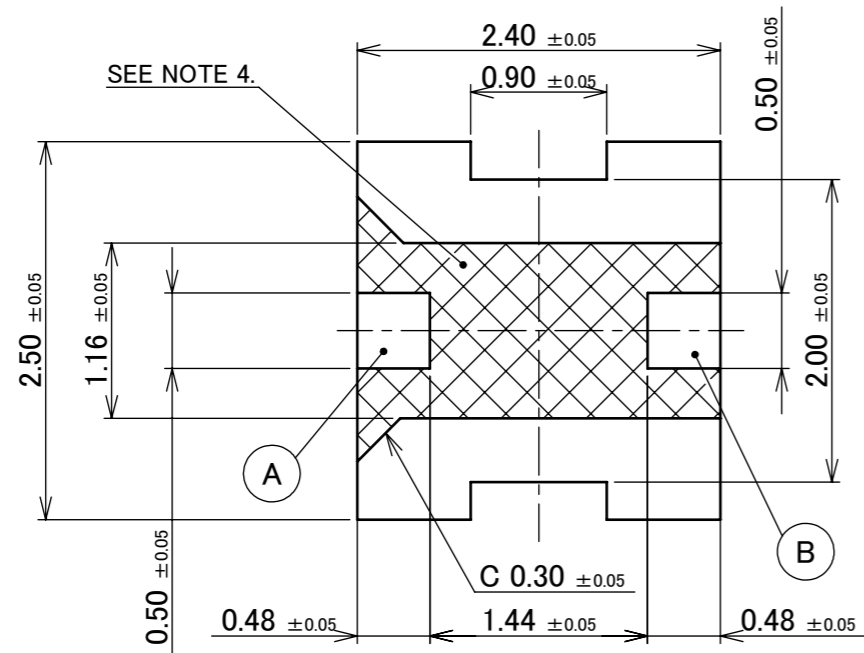
4	GROUND CONTACT	PHOSPHOR BRONZE	ALL OVER Ni 1.00 μm MIN. CONTACT PART Au 0.02 μm MIN. SOLDERING PART Au 0.02 μm MIN.
3	CONTACT B	PHOSPHOR BRONZE	ALL OVER Ni 1.00 μm MIN. CONTACT PART Au 0.2 μm MIN. SOLDERING PART Au 0.02 μm MIN.
2	CONTACT A	CORSON ALLOY	ALL OVER Ni 1.00 μm MIN. CONTACT PART Au 0.2 μm MIN. SOLDERING PART Au 0.02 μm MIN.
1	HOUSING	LCP	UL94V-0, BLACK
NO.	DESCRIPTION	MATERIAL	FINISH , REMARKS

8	Z200013	Haji	2020/01/08	Y.S	ANGLE	±2°	6 OVER 30 MAX.	±0.3	PROJECTION ⊕	SERIES No. R10	CUSTOMER COPY
7	Z181273	Y.I	2018/09/28	Ken	6 MAX.	±0.2	30 OVER 120 MAX.	±0.5			
6	Z180599	M.N	2018/05/09	Ken	GENERAL TOLERANCE.				TITLE MHF®-SW23	SCALE 20:1	UNIT mm
5	Z170101	Y.I	2017/01/27	Ken	DWG.	DATE					
4	Z150210	T.S	2015/02/25	Tom	Y.Hashimoto	2011/12/09					
3	Z13252	TAK	2013/03/28	Tom	CHK.	DATE					
REV.	ECN	BY	DATE	APP.	APP.	DATE			DWG. No.	20549	SIZE A3
REVISION RECORD					E.Kawabe	2011/12/09			SHEET 1/6 REV. 7		

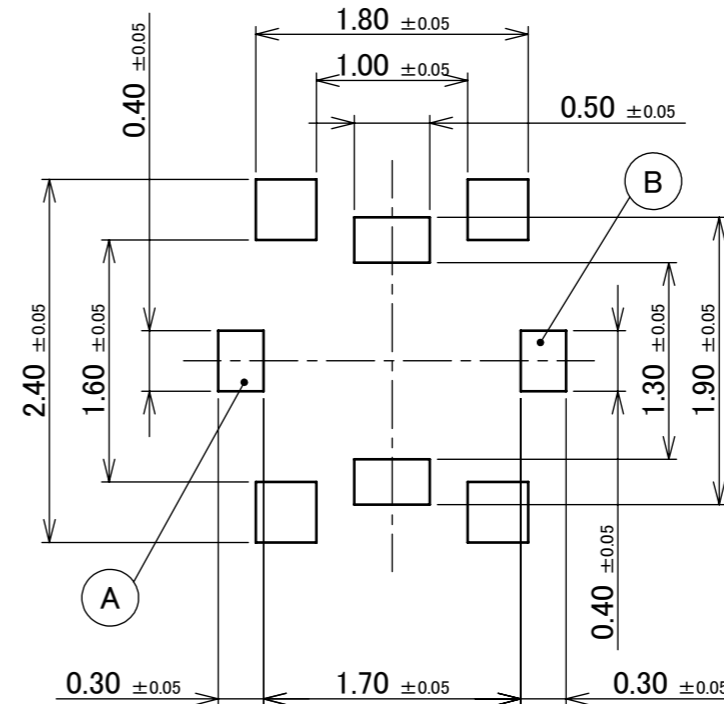


ITEMS	SPECIFICATION	
	20549-001E	20549-001E-01
CONNECTOR PART NO.	20549-001E	20549-001E-01
RATING POWER	2 W	
RATING FREQUENCY	DC ~ 11.0 GHz	
OPERATING TEMPERATURE	233 ~ 358 K (-40°C ~ +85°C)	
OPERATING HUMIDITY	90% MAX. (NON-CONDENSING)	
VSWR	1.2 MAX. AT DC ~ 2.5 GHz, 1.3 MAX. AT 2.5 GHz ~ 6.0 GHz, 1.5 MAX. AT 6.0 GHz ~ 11.0 GHz	
MAIN CONTACT RESISTANCE	100 mohm MAX	
GROUND CONTACT RESISTANCE	100 mohm MAX	
INSULATION RESISTANCE	INITIAL: 1000 Mohm MIN. / AFTER TEST: 10 Mohm MIN.	
DIELECTRIC WITHSTANDING VOLTAGE	100 V AC, 1 MINUTE	
DURABILITY	100 CYCLES	
PRODUCT SPECIFICATION	PRS-1672	
TEST REPORT	TR-12041	
PACKING STANDARD	300-991	PST-12025
INSTRUCTION MANUAL	HIM-13004	
APPEARANCE CRITERIA No.	QLS-A***	

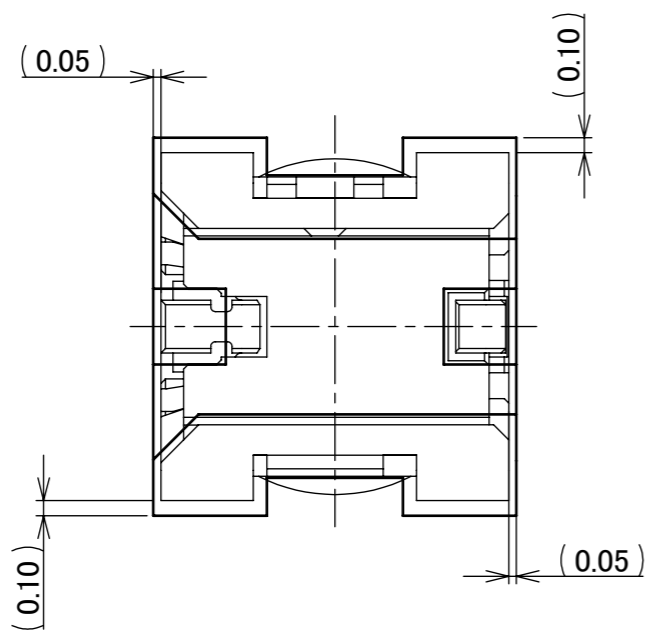
ANGLE	±2°	6 OVER 30 MAX.	±0.3	PROJECTION 	SERIES No. R10	CUSTOMER COPY
6 MAX.	±0.2	30 OVER 120 MAX.	±0.5			
GENERAL TOLERANCE.				TITLE MHF®-SW23	SCALE -	
DWG.	DATE					
CHK.	DATE					
APP.	DATE					
DWG. No.				20549	SIZE A3	SHEET 2/6 REV. 7



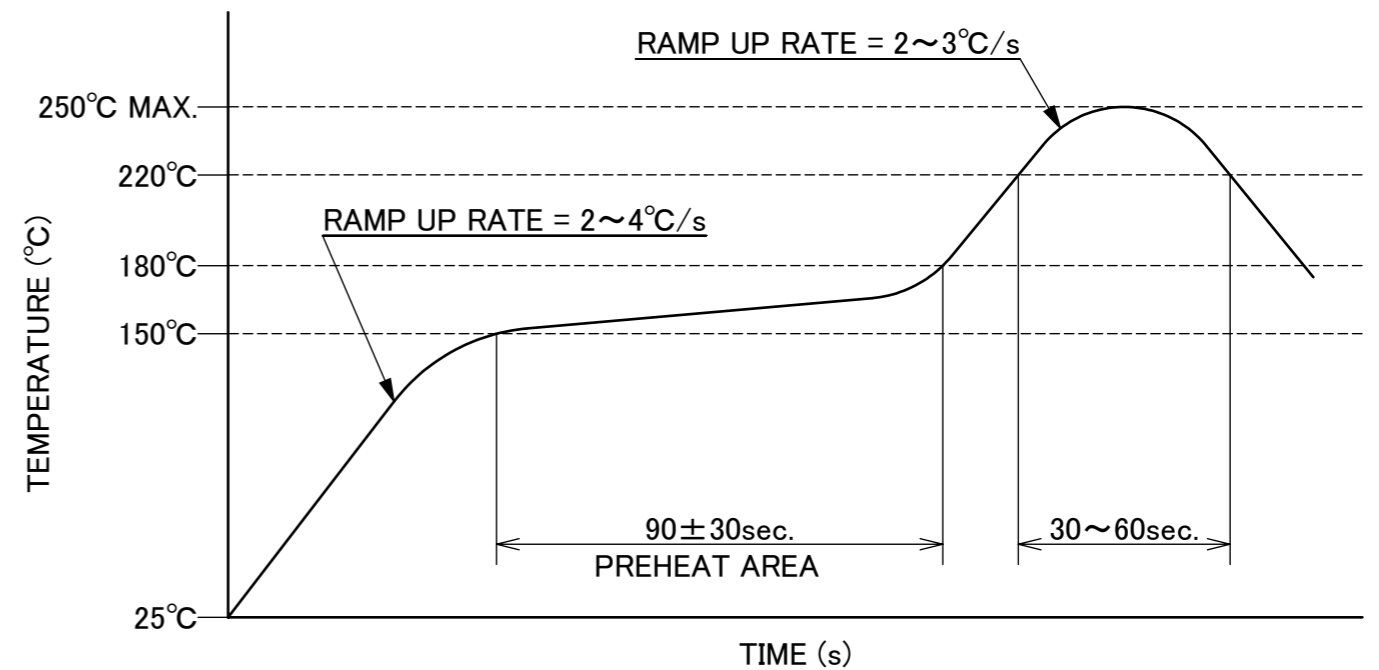
RECOMMENDED FOOTPRINT PATTERN



MASK THICKNESS: $t = 0.1$
METAL MASK



CONNECTOR ON RECOMMENDED FOOTPRINT PATTERN



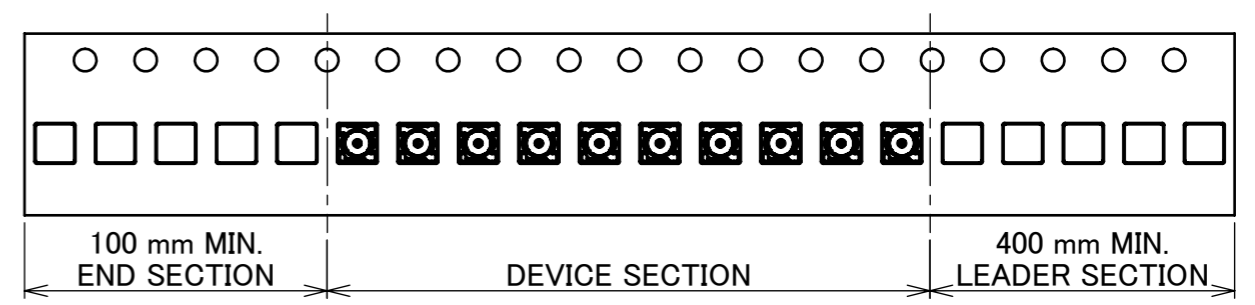
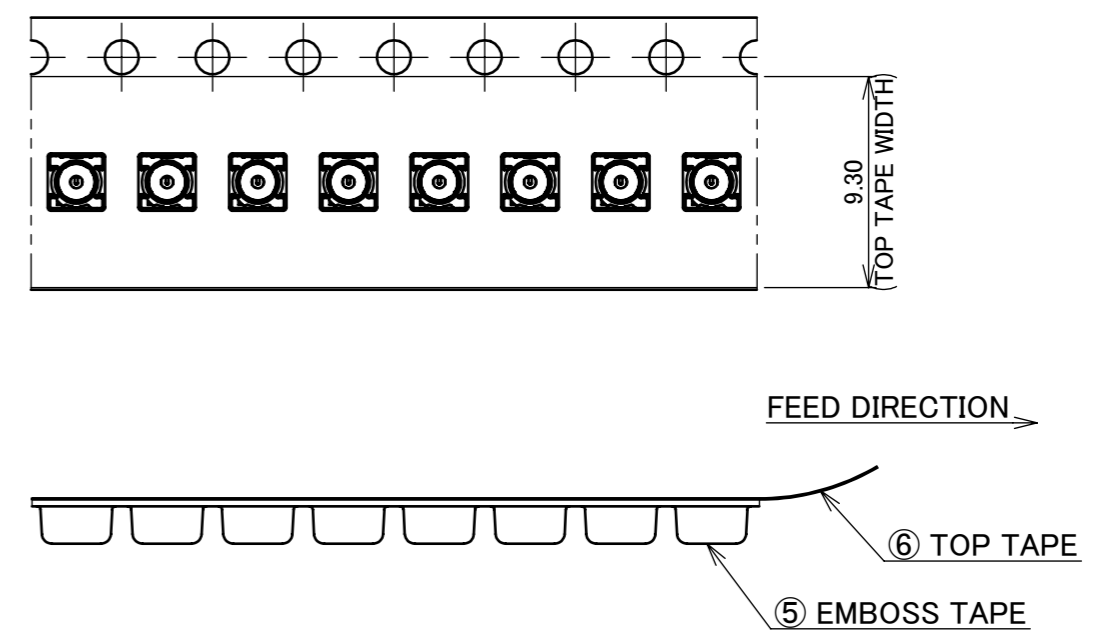
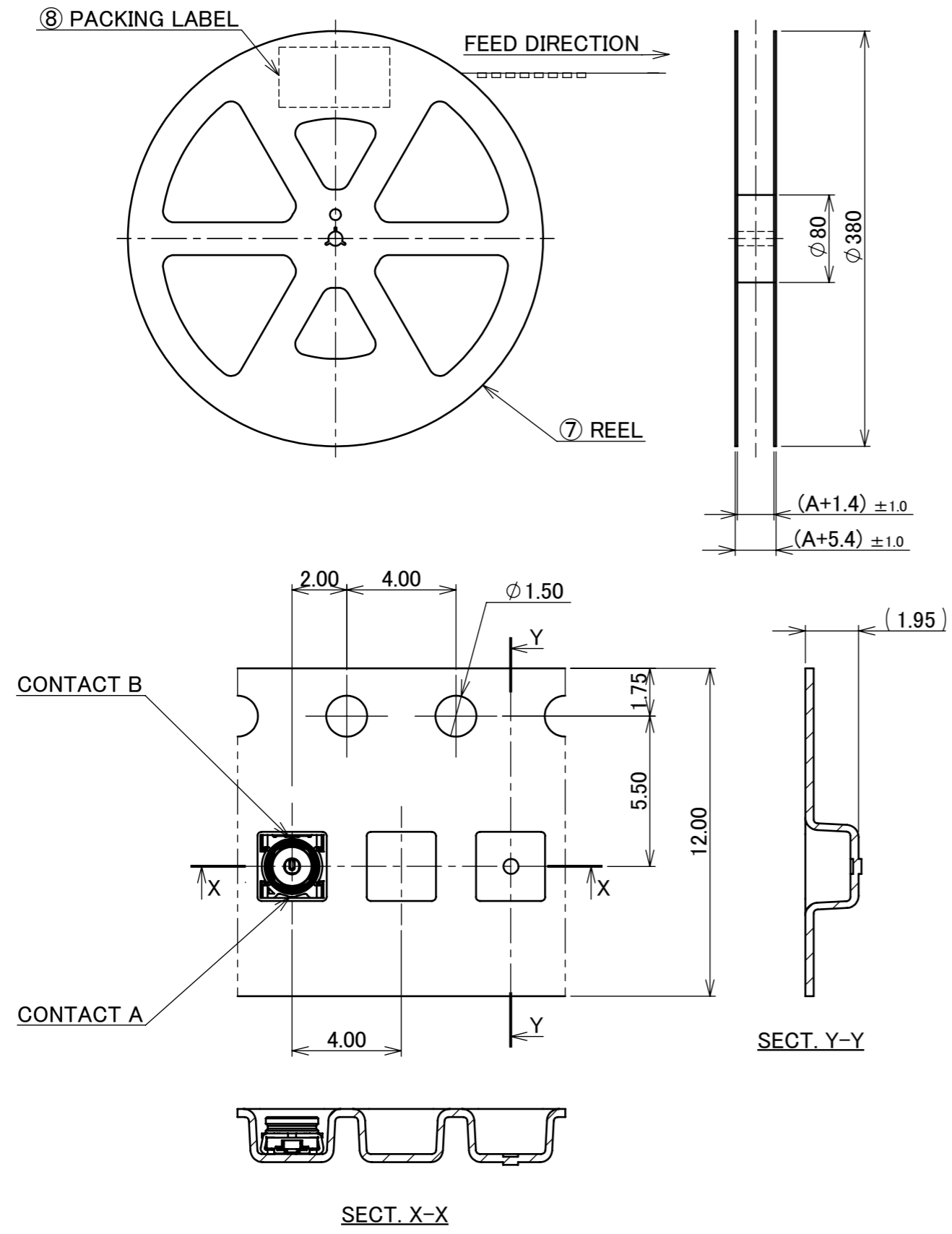
REFLOW TEMPERATURE PROFILE
SENJU METAL INDUSTRY CO., LTD. : M705-SHF(Sn96.5 Ag3.0 Cu0.5)

NOTES
4. PATTERN AND RESISTPROHIBITION AREA

ANGLE	$\pm 2^\circ$	6 OVER 30 MAX.	± 0.3	PROJECTION ⊕	SERIES No. R10	CUSTOMER COPY
	6 MAX.	± 0.2	30 OVER 120 MAX.			
GENERAL TOLERANCE.				TITLE	SCALE 20:1 UNIT mm SIZE A3	SHEET 3/6 REV. 7
DWG.	DATE			MHF [®] -SW23		
CHK.	DATE					
APP.	DATE			DWG. No. 20549		



PART NO.	A	QTY. PER EMBOSS REEL (PIECES / REEL)	QTY. PER PACKING CARTON (REELS / CARTON)
20549-001E	12	10,000 PIECES / REEL	10 REELS / CARTON = 100,000 PIECES

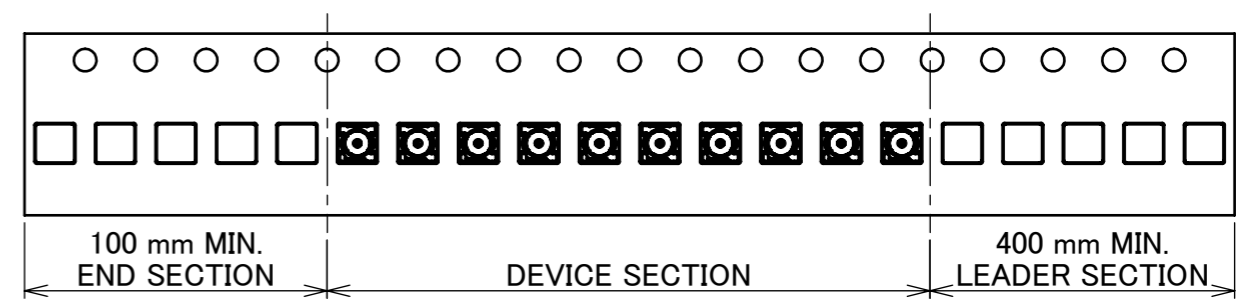
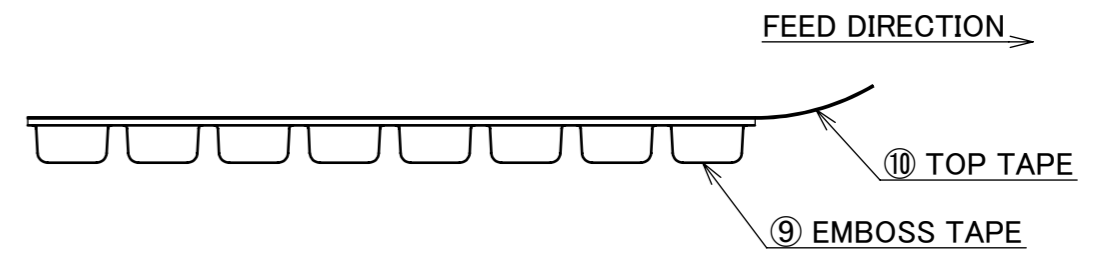
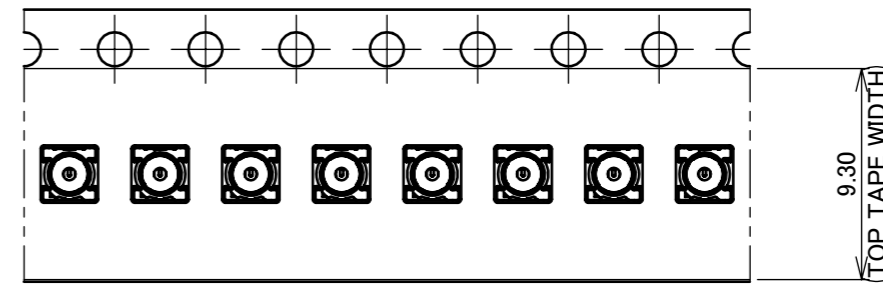
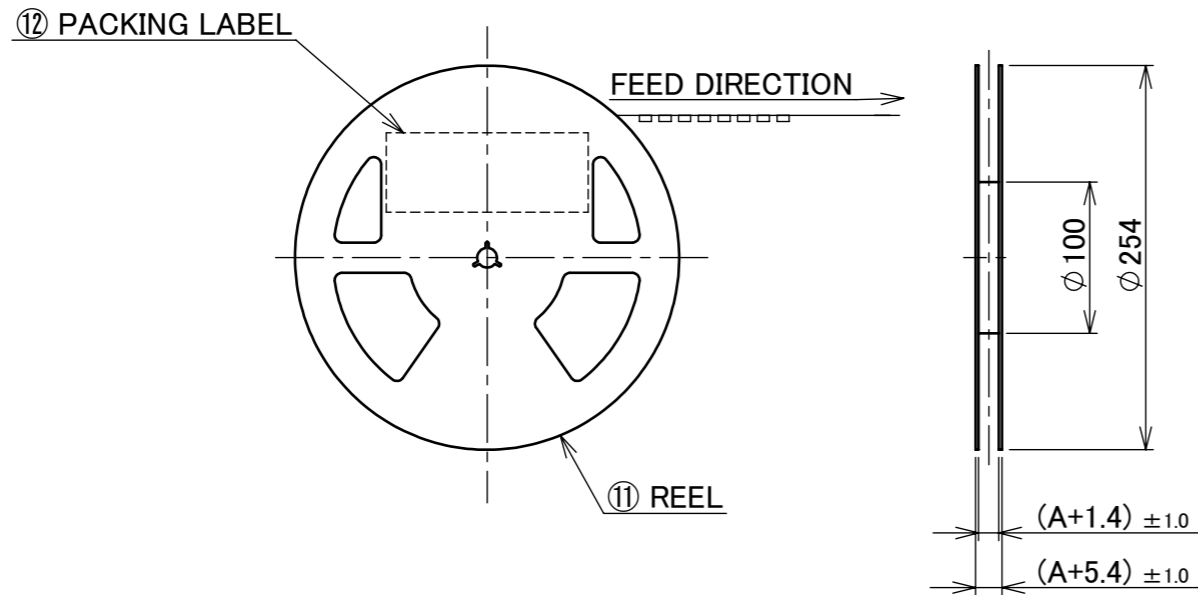


NOTES.
5. TAPING SPECIFICATION FOLLOWS JIS C 0806 (IEC 60286-3).
6. MAKE EMPTY SECTION OF LEADER AND END ON EACH END OF THE TAPE.
7. TOP TAPE SHALL NOT STICK OUT FROM EMBOSS TAPE.
8. TOP TAPE SHALL NOT COVER FEED HOLE.

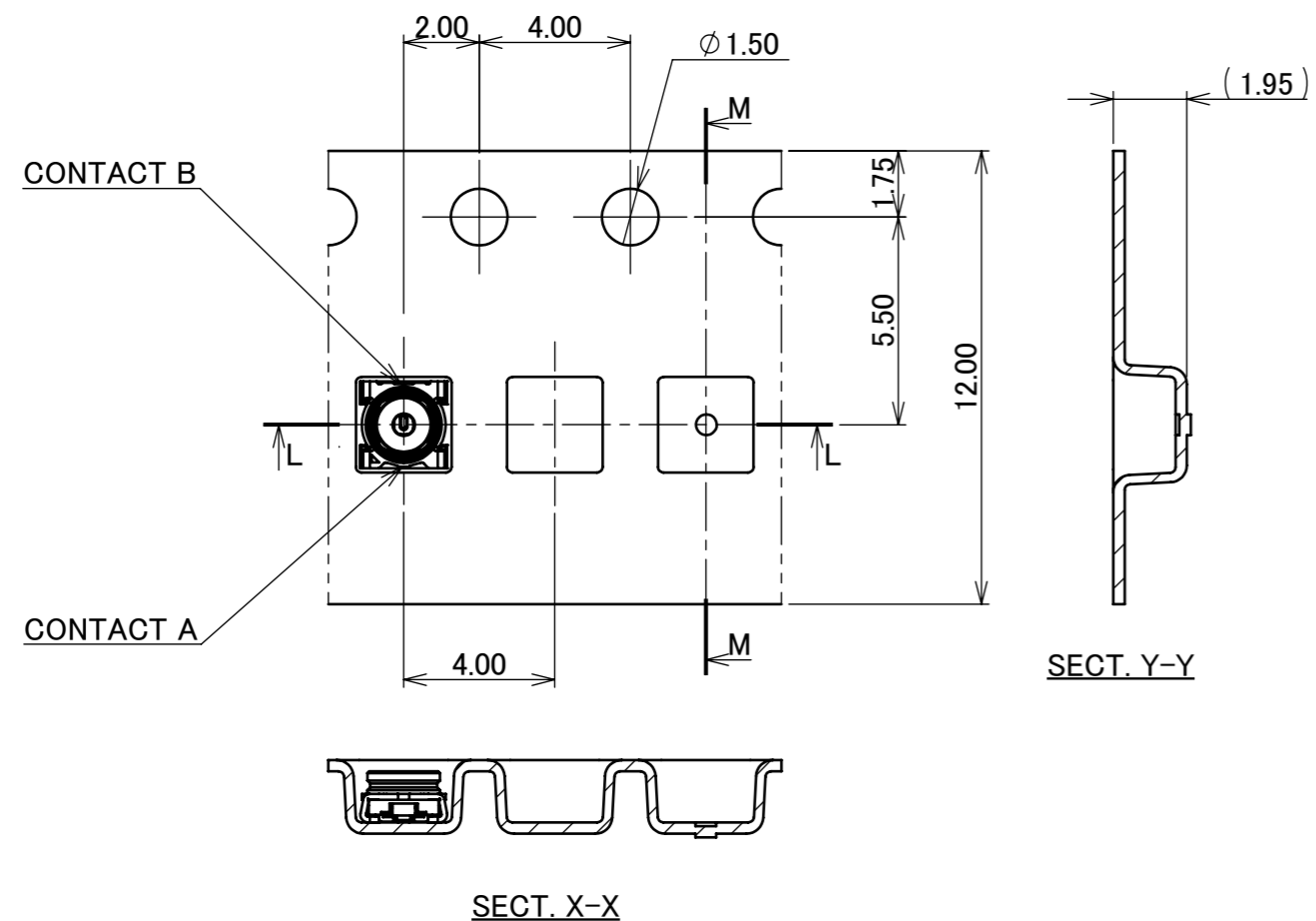
8	PACKING LABEL	-	-
7	REEL	PS	ANTI-STATIC TYPE BLACK
6	TOP TAPE	PET t=0.062 TRANSPARENCY	ANTI-STATIC TYPE
5	EMBOSS TAPE	PS t=0.3 TRANSPARENCY	ANTI-STATIC TYPE
NO.	DESCRIPTION	MATERIAL	FINISH, REMARKS

ANGLE	±2°	6 OVER 30 MAX.	±0.3	PROJECTION ⊕	SERIES No. R10	CUSTOMER COPY
6 MAX.	±0.2	30 OVER 120 MAX.	±0.5			
GENERAL TOLERANCE.				TITLE	SCALE	
DWG.	DATE			MHF®-SW23	-	
CHK.	DATE				UNIT	
APP.	DATE			DWG. No.	mm	
				20549	SIZE	SHEET 4/6 REV. 7
					A3	

PART NO.	A	QTY. PER EMBOSS REEL (PIECES / REEL)	QTY. PER PACKING CARTON (REELS / CARTON)
20549-001E-01	12	2,500 PIECES / REEL	10 REELS / CARTON = 25,000 PIECES

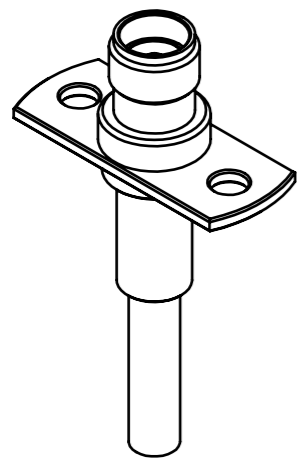


- NOTES.
- 9. TAPING SPECIFICATION FOLLOWS JIS C 0806 (IEC 60286-3).
 - 10. MAKE EMPTY SECTION OF LEADER AND END ON EACH END OF THE TAPE.
 - 11. TOP TAPE SHALL NOT STICK OUT FROM EMBOSS TAPE.
 - 12. TOP TAPE SHALL NOT COVER FEED HOLE.

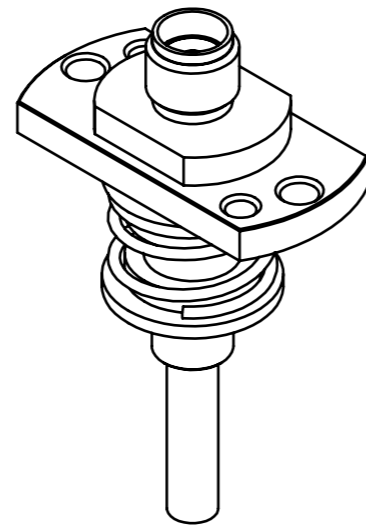


NO.	DESCRIPTION	MATERIAL	FINISH, REMARKS
12	PACKING LABEL	-	-
11	REEL	PS	ANTI-STATIC TYPE BLACK
10	TOP TAPE	PET t=0.062 TRANSPARENCY	ANTI-STATIC TYPE
9	EMBOSS TAPE	PS t=0.3 TRANSPARENCY	ANTI-STATIC TYPE

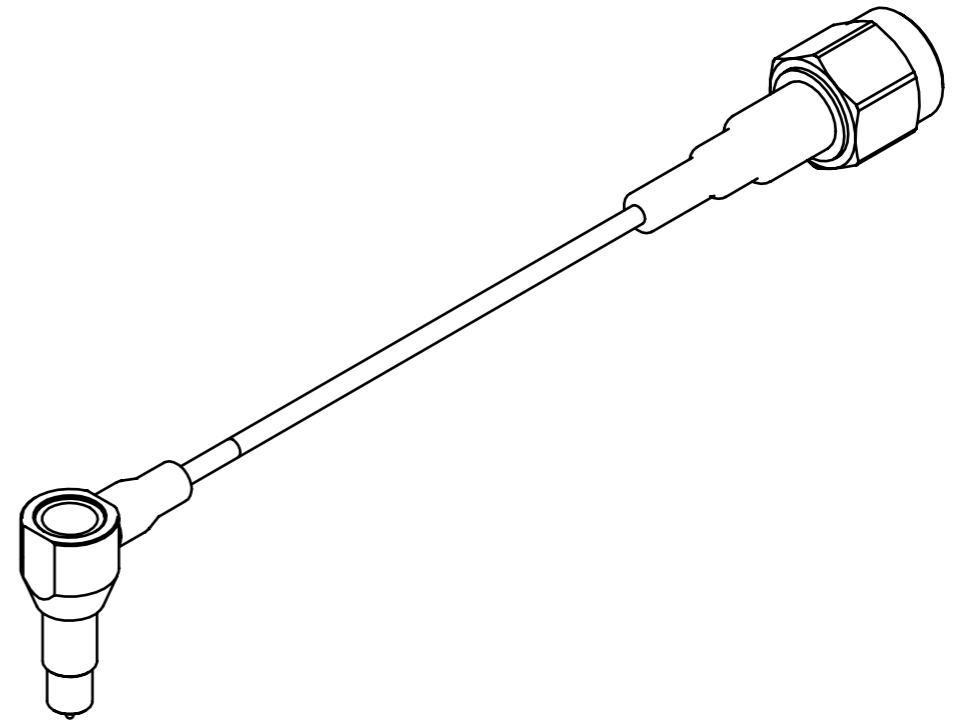
ANGLE	±2°	6 OVER 30 MAX.	±0.3	PROJECTION ⊕	SERIES No. R10	CUSTOMER COPY
	6 MAX.	±0.2	30 OVER 120 MAX.			
GENERAL TOLERANCE.				TITLE	SCALE -	UNIT mm
DWG.	DATE			MHF®-SW23		
CHK.	DATE					
APP.	DATE			DWG. No. 20549		
					SIZE A3	SHEET 5/6
						REV. 7



MHF-SW23 / HIGH CYC ADAP
PART NO. 90604-0001



MHF-SW23 / HIGH CYC ADAP FLOATING
PART NO. 90605-0001



MHF-SW23 / SMA-P CONV ADAP LOCK
PART NO. 90582-0400

ANGLE	±2°	6 OVER 30 MAX.	±0.3	PROJECTION ⊕ ▽	SERIES No. R10	CUSTOMER COPY
6 MAX.	±0.2	30 OVER 120 MAX.	±0.5			
GENERAL TOLERANCE.				TITLE MHF®-SW23	SCALE 2:1	UNIT mm
DWG.	DATE					
CHK.	DATE					
APP.	DATE					
				DWG. No.	20549	SIZE A3
				SHEET 6/6		REV. 7

