

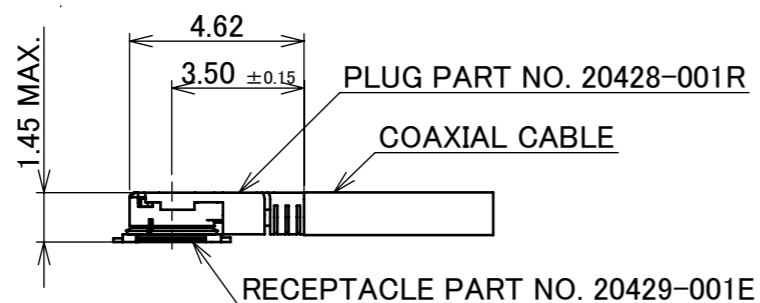
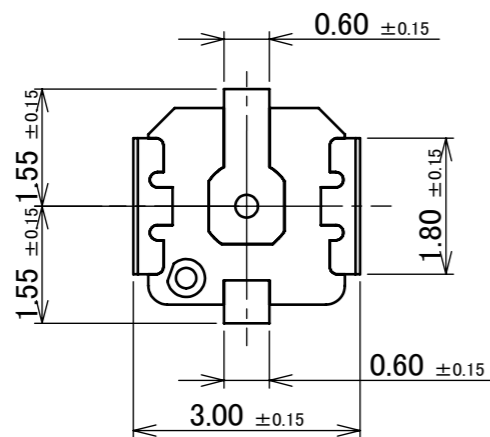
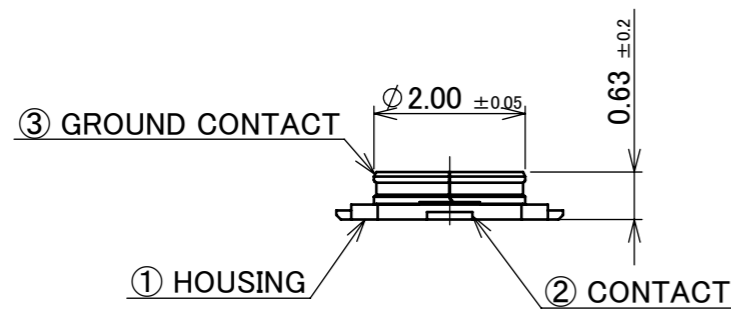
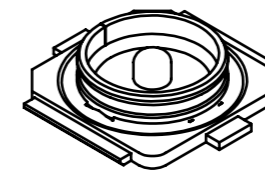
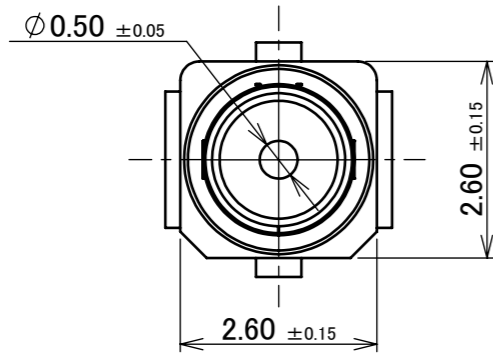
PART NO. 20429-001E



Halogen Free



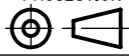
RoHS Compliant

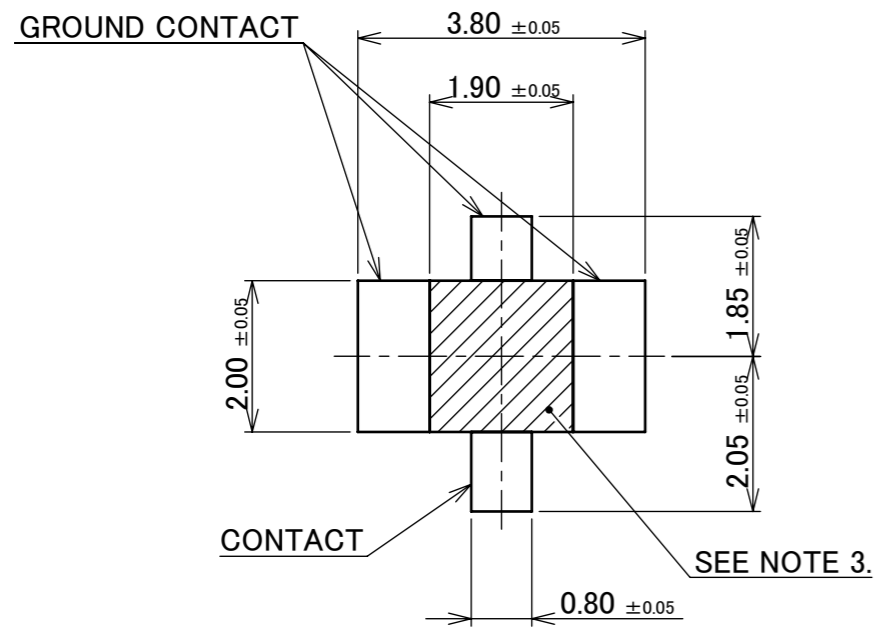


3	GROUND CONTACT	PHOSPHOR BRONZE	ALL OVER Ni 1.00 μm MIN. CONTACT PART Au 0.03 μm MIN. SOLDERING PART Au 0.03 μm MIN.
2	CONTACT	BRASS	ALL OVER Ni 1.00 μm MIN. CONTACT PART Au 0.05 μm MIN. SOLDERING PART Au 0.05 μm MIN.
1	HOUSING	LCP	UL94V-0, BLACK
NO.	DESCRIPTION	MATERIAL	FINISH , REMARKS

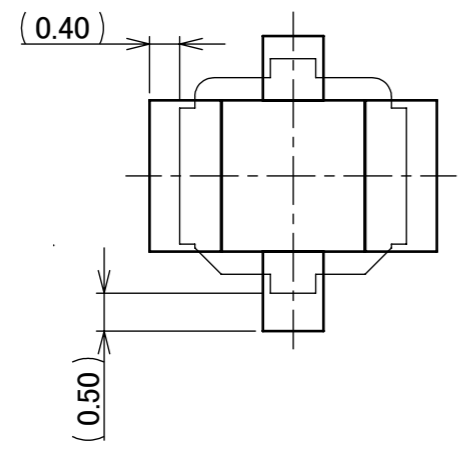
9	Z220668	Y.I	2022/06/15	Y.H	ANGLE	±2°	6 OVER 30 MAX.	±0.3	PROJECTION ⊕	SERIES No. R2	CUSTOMER COPY	
8	Z191285	R.S	2019/09/24	Y.S	6 MAX.	±0.2	30 OVER 120 MAX.	±0.5				
7	Z181718	Y.I	2018/12/27	Ken	GENERAL TOLERANCE.				TITLE MHF® -A13 RECEPTACLE	SCALE 10:1	UNIT mm	I-PEX
6	Z150656	S.T	2015/06/12	Tom	DWG.	DATE						
5	Z12745	H.M	2012/08/31	E.K	T.Hirakawa		2006/10/30					
4	Z11644	H.M	2011/12/06	E.K	CHK.							
REV.	ECN	BY	DATE	APP.	APP.	DWG. No.		20429	SIZE A3	SHEET 1/5	REV. 9	
REVISION RECORD					E.Kawabe							

ITEMS	SPECIFICATION
APPLICABLE CONNECTOR PART NO.	20428-001E
RATING VOLTAGE	60 V AC (R.M.S)
RATING FREQUENCY	DC~9 GHz
OPERATING TEMPERATURE	233~363 K (-40°C~+90°C)
VSWR (MATED WITH SMA ADAPTER PART No. 90413-002)	1.30 MAX. AT 0.1~3 GHz, 1.40 MAX. AT 3~6 GHz, 1.50 MAX. AT 6~9 GHz
MAIN CONTACT RESISTANCE	INITIAL : 20 mohm MAX. / AFTER TEST : Δ R 20 mohm MAX.
GROUND CONTACT RESISTANCE	INITIAL : 20 mohm MAX. / AFTER TEST : Δ R 20 mohm MAX.
INSULATION RESISTANCE	INITIAL : 500 Mohm MIN. / AFTER TEST : 100 Mohm MIN.
DIELECTRIC WITHSTANDING VOLTAGE	AC 200 V 1min
DURABILITY	30 CYCLES
TOTAL MATING FORCE (INITIAL / AFTER TEST)	15 N MAX. / 15 N MAX.
TOTAL UNMATING FORCE (INITIAL / AFTER TEST)	4 N MIN. / 2 N MIN.
PRODUCT SPECIFICATION	PRS-1350
TEST REPORT	TR-07031
PACKING STANDARD	300-532
INSTRUCTION MANUAL	HIM-11001
APPEARANCE CRITERIA NO.	QLS-A***

ANGLE	$\pm 2^\circ$	6 OVER 30 MAX.	± 0.3	PROJECTION 	SERIES No. R2	CUSTOMER COPY		
6 MAX.	± 0.2	30 OVER 120 MAX.	± 0.5					
GENERAL TOLERANCE.				TITLE MHF® -A13 RECEPTACLE	SCALE -	I-PEX		
DWG.	DATE							
CHK.								
APP.								
				DWG. No.	20429	SIZE A3	SHEET 2/5	REV. 9

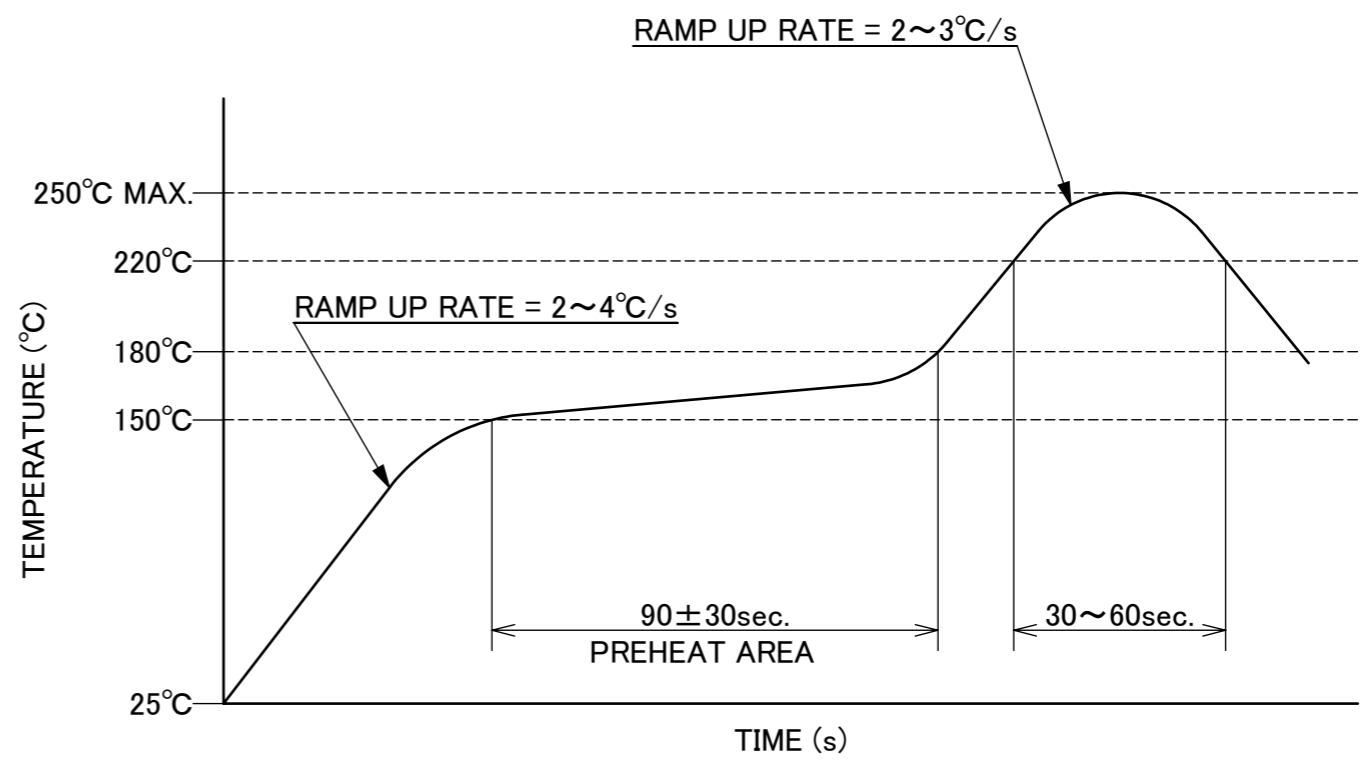


RECOMMENDED FOOTPRINT PATTERN



CONNECTOR ON RECOMMENDED FOOTPRINT PATTERN

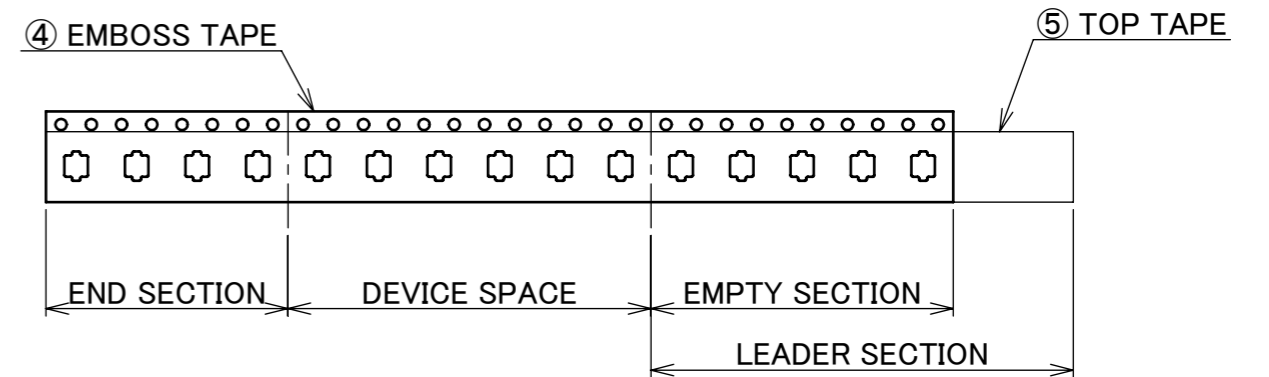
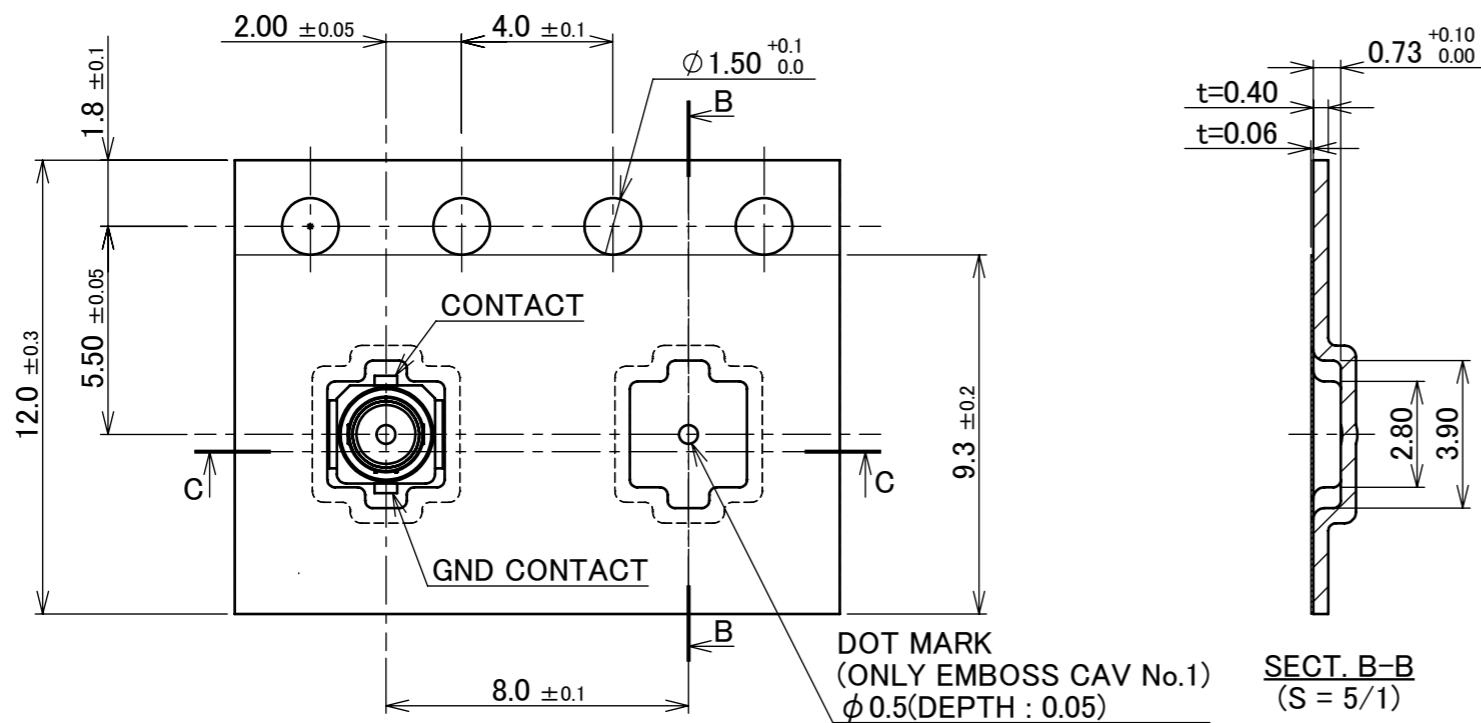
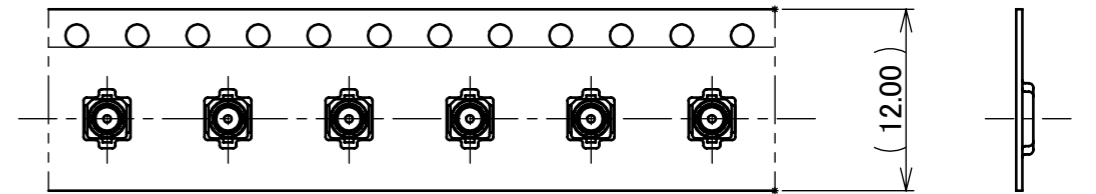
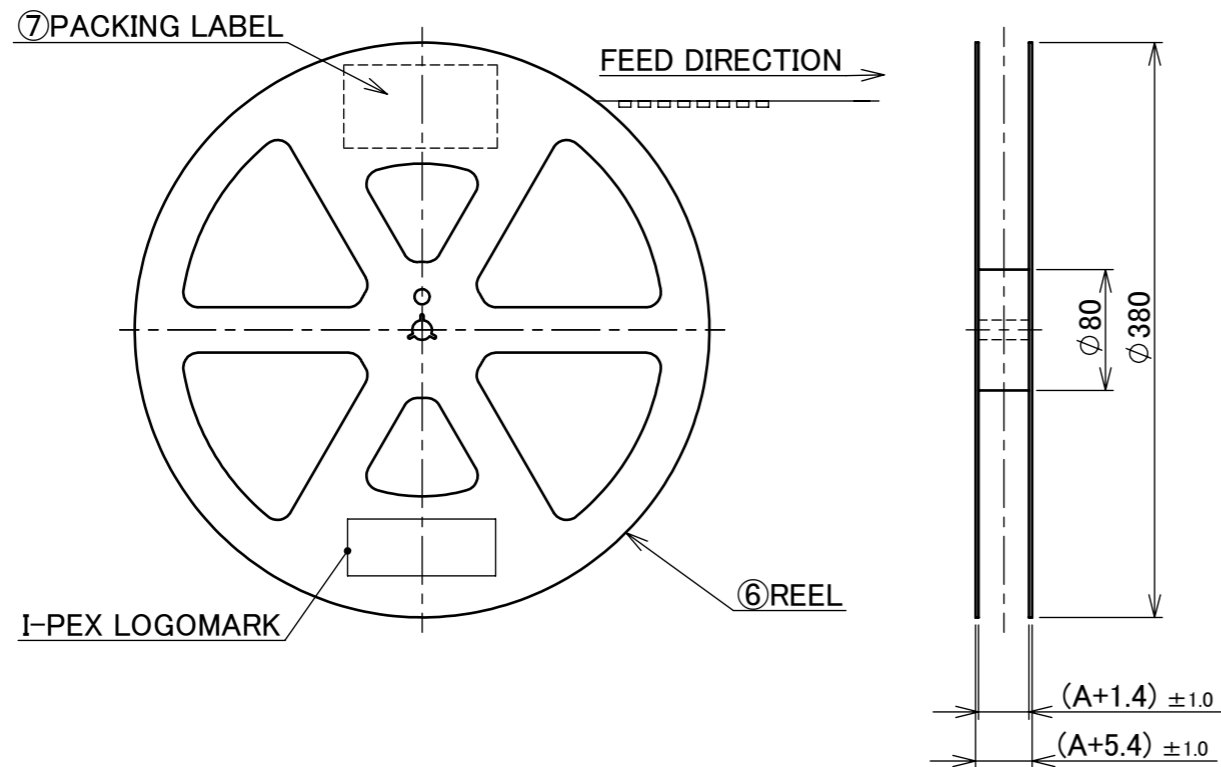
NOTES
3. CUT OUT PROHIBITION AREA



REFLOW TEMPERATURE PROFILE
SENJU METAL INDUSTRY CO., LTD. : M705-SHF(Sn96.5 Ag3.0 Cu0.5)

ANGLE	±2°	6 OVER 30 MAX.	±0.3	PROJECTION ⊕	SERIES No. R2	CUSTOMER COPY			
6 MAX.	±0.2	30 OVER 120 MAX.	±0.5						
GENERAL TOLERANCE.				TITLE		SCALE	I-PEX		
DWG.	DATE			MHF® -A13 RECEPTACLE		10:1			
CHK.						UNIT			
APP.				DWG. No. 20429		mm			
						SIZE	SHEET	REV.	
						A3	3/5	9	

PART NO.	A	QTY. PER EMBOSS REEL (PIECES / REEL)	QTY. PER PACKING CARTON (REELS / CARTON)
20429-001E	12	5,000 / REEL	8 / CARTON = 40,000 PIECES

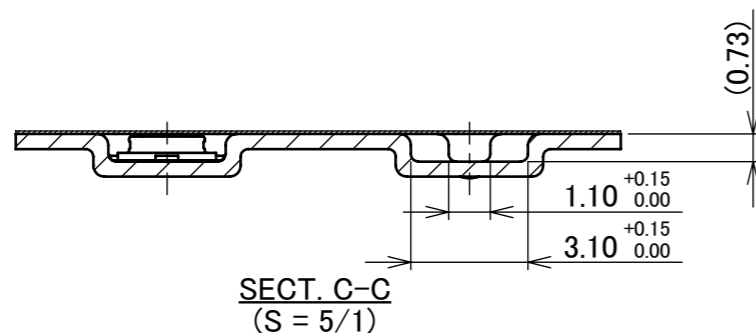


NOTES.

- TAPING SPECIFICATION FOLLOWS JIS C 0806 (IEC 60286-3).
- MAKE EMPTY SECTION OF LEADER AND END ON EACH END OF THE TAPE.
- TOP TAPE SHALL NOT STICK OUT FROM EMBOSS TAPE.
- TOP TAPE SHALL NOT COVER FEED HOLE.

NO.	DESCRIPTION	MATERIAL	FINISH, REMARKS
7	PACKING LABEL	-	-
6	REEL	PS	ANTI-STATIC TYPE
5	TOP TAPE	PET $t=0.061$	ANTI-STATIC TYPE
4	EMBASS TAPE	PS $t=0.4$	ANTI-STATIC TYPE

ANGLE	±2°	6 OVER 30 MAX.	±0.3	PROJECTION	SERIES No.	CUSTOMER COPY		
6 MAX.	±0.2	30 OVER 120 MAX.	±0.5		R2			
GENERAL TOLERANCE.				TITLE	SCALE		I-PEX	
DWG.	DATE			MHF® -A13 RECEPTACLE	-			
CHK.					UNIT		mm	
APP.				DWG. No.	20429	SIZE	SHEET	REV.
						A3	4/5	9

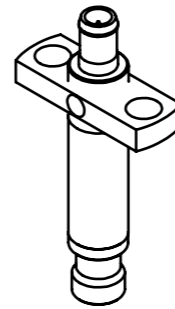




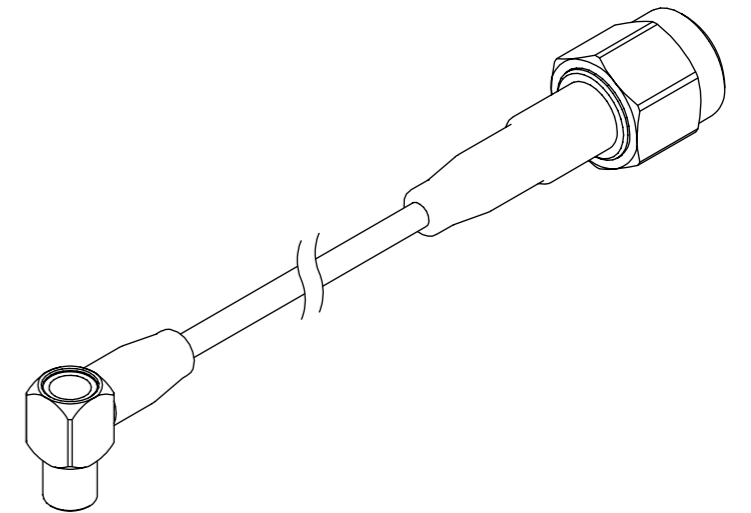
MHF-A13 SMA ADAPTOR
PART NO. 90413-002



MHF-A13 SMA ADAPTOR HIGH CYCLE TYPE
PART NO. 90416-001



4.5MM HIGH CYCLE TEST PROBE FOR MHF/MHF A
PART NO. 90575-0001



4.5MM HIGH CYCLE TEST PROBE CABLE ASS'Y
PART NO. 90577-****

* 90575-0001 AND 90577-**** SHOULD BE USED TOGETHER.

ANGLE	±2°	6 OVER 30 MAX.	±0.3	PROJECTION ⊕	SERIES No. R2	CUSTOMER COPY			
6 MAX.	±0.2	30 OVER 120 MAX.	±0.5						
GENERAL TOLERANCE.				TITLE		SCALE	I-PEX		
DWG.	DATE			MHF® -A13 RECEPTACLE		2:1			
CHK.						UNIT			
APP.				DWG. No.		mm			
				20429		SIZE	SHEET	REV.	
						A3	5/5	9	