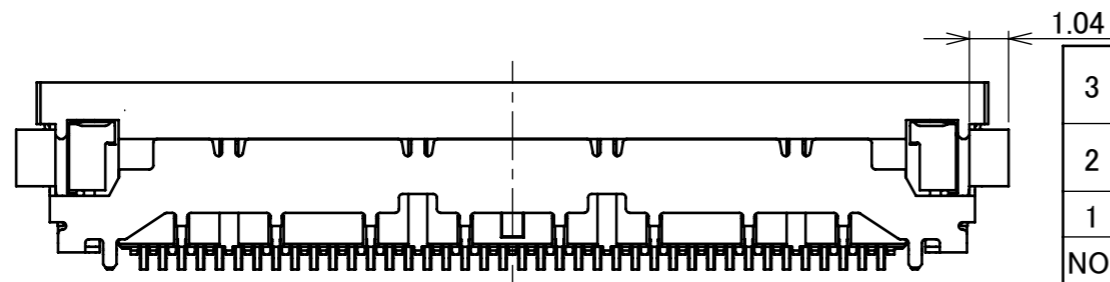
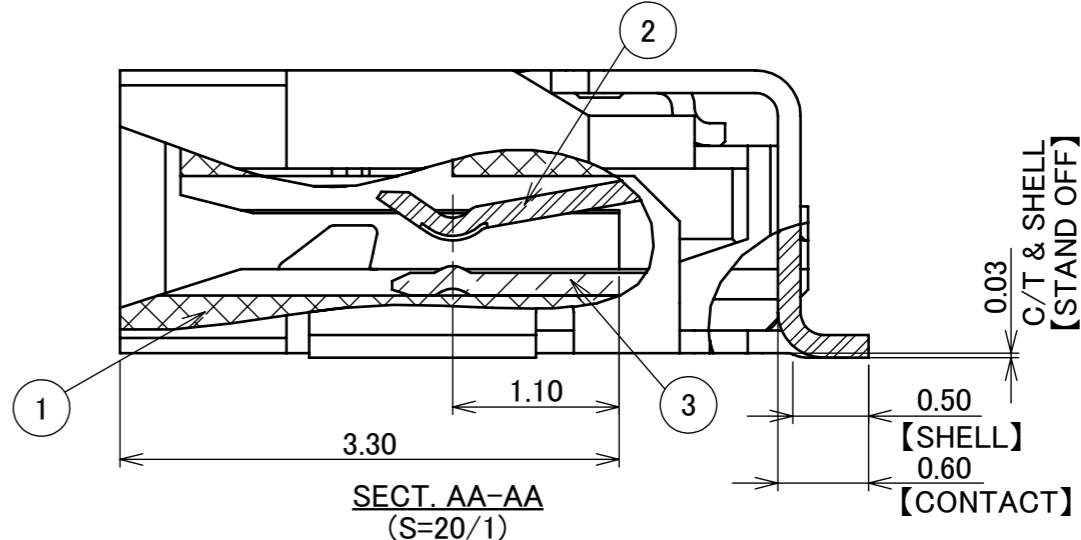
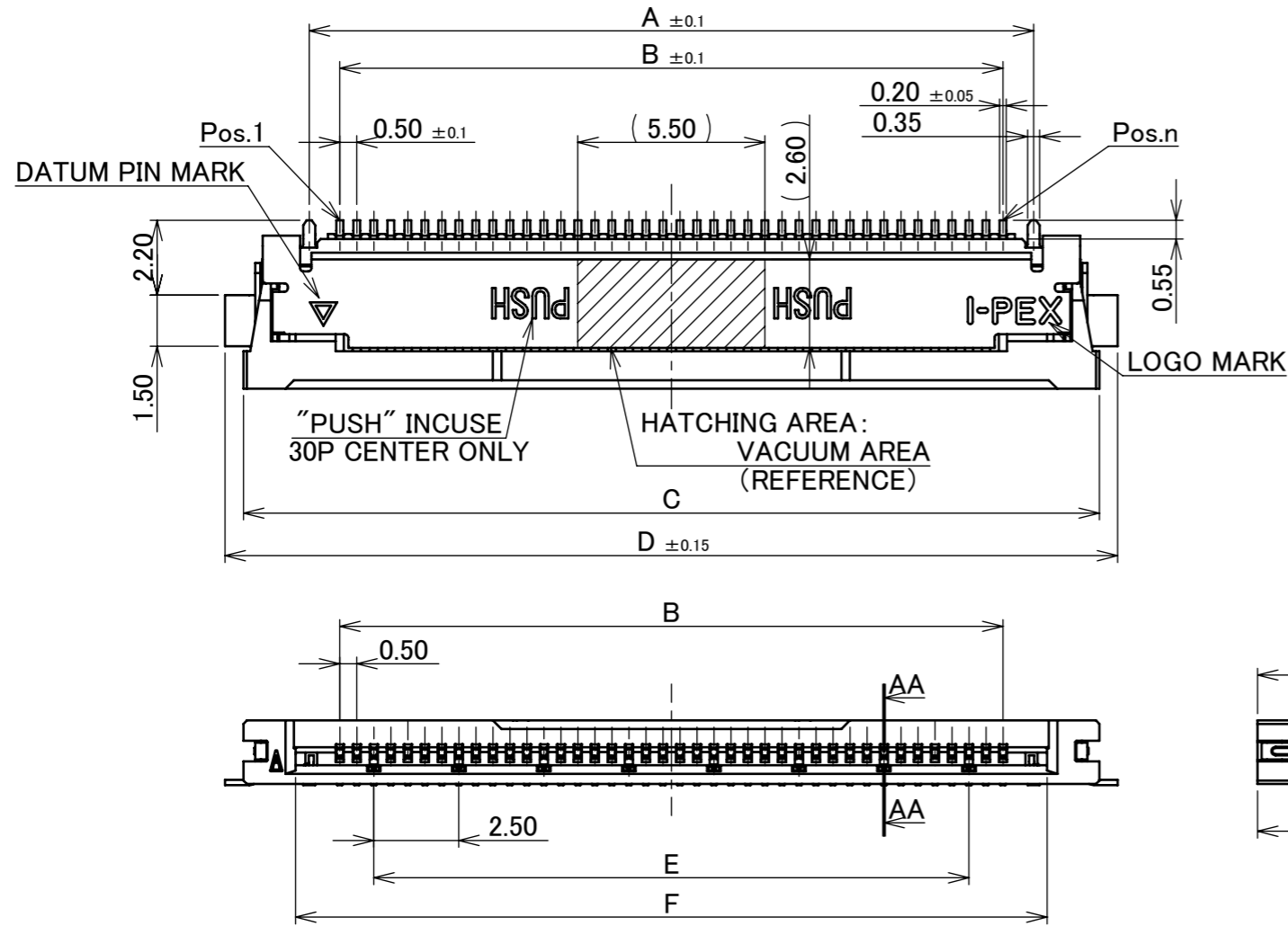
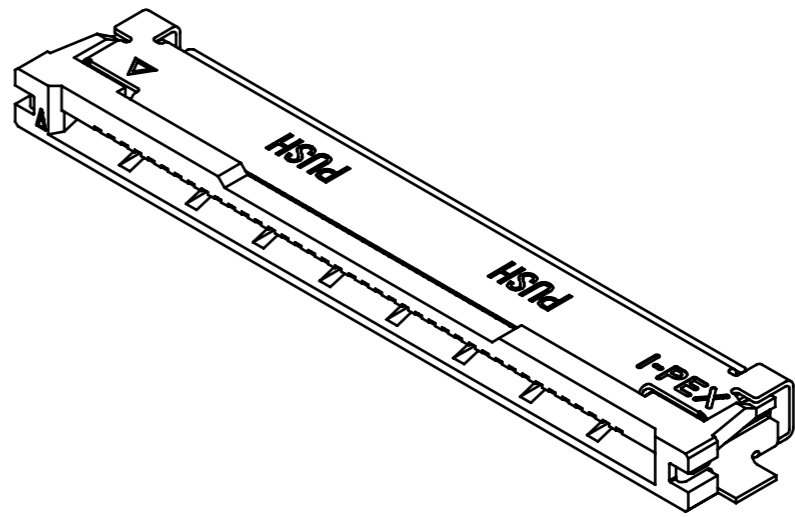
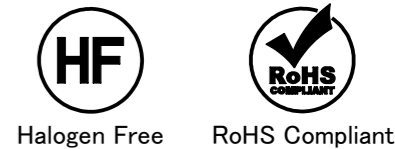


Recommended P/N 20893-0\*\*E-02

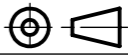
PART NO.	POS.	A	B	C	D	E	F
20893-030E-02	30P	16.30	14.50	20.17	21.25	12.50	17.10
20893-040E-02	40P	21.30	19.50	25.17	26.25	17.50	22.10
20893-050E-02	50P	26.30	24.50	30.17	31.25	22.50	27.10



NO.	DISCRIPTION	MATERIAL	FINISH , REMARKS
3	SHELL	PHOSPHOR BRONZE	SOLDERING AREA: Sn 3.00 μm MIN. OVER Ni 1.00 μm MIN. OTHER AREA: Sn 1.00 μm MIN. OVER Ni 1.00 μm MIN.
2	CONTACT	CORSON ALLOY	CONTACT AREA: Au 0.03 μm MIN. OVER Ni 1.00 μm MIN. SOLDERING AREA: Au 0.03 μm MIN. OVER Ni 1.00 μm MIN.
1	HOUSING	LCP	UL94V-0, BLACK

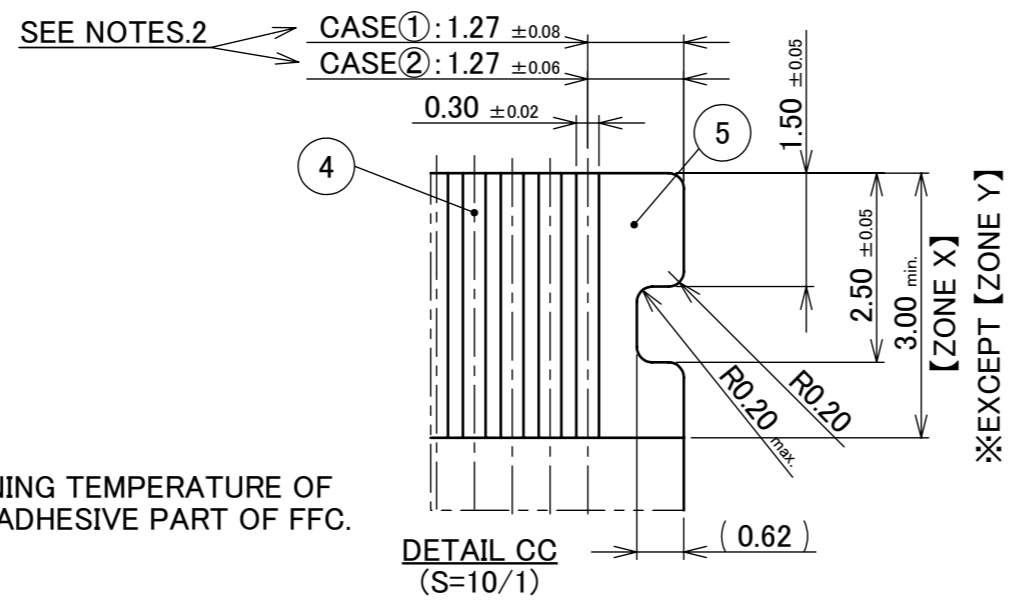
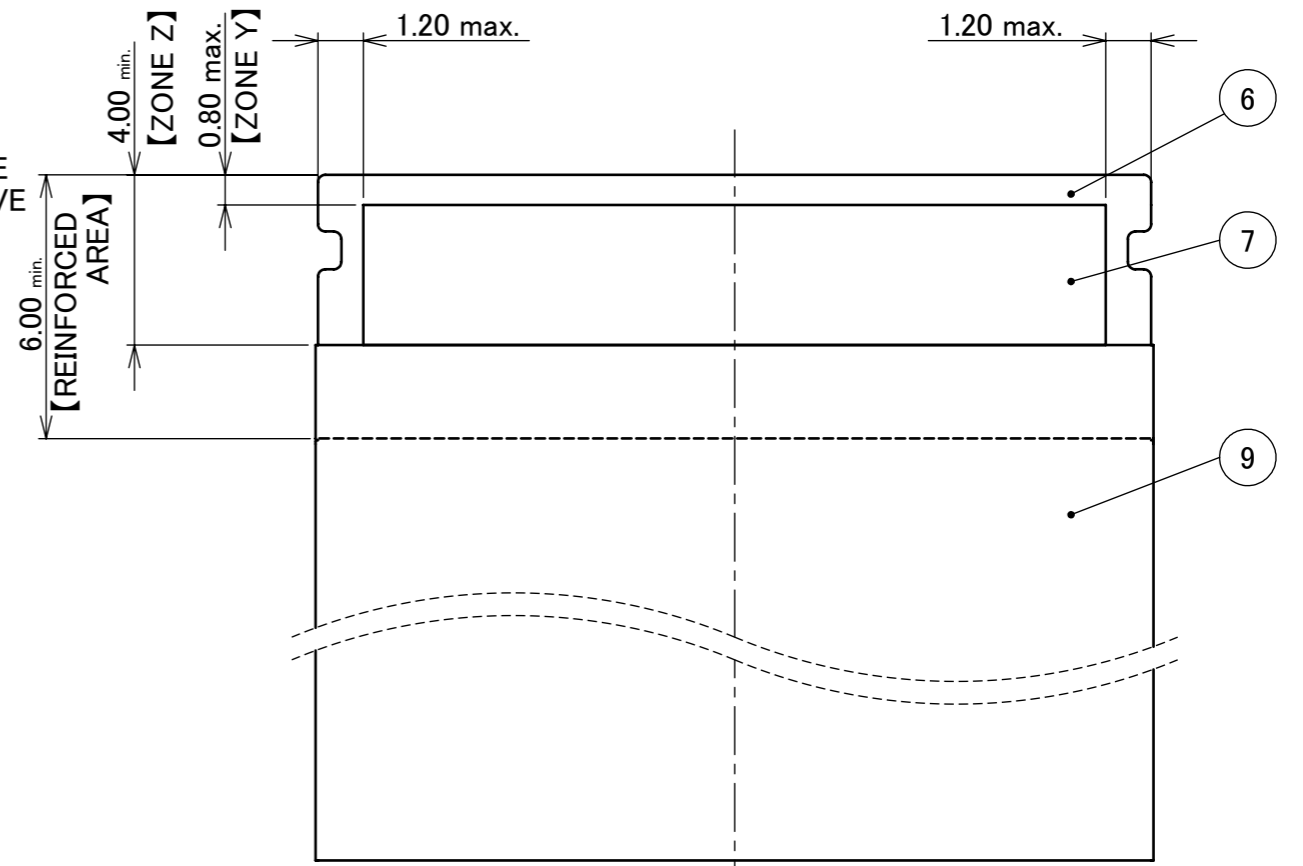
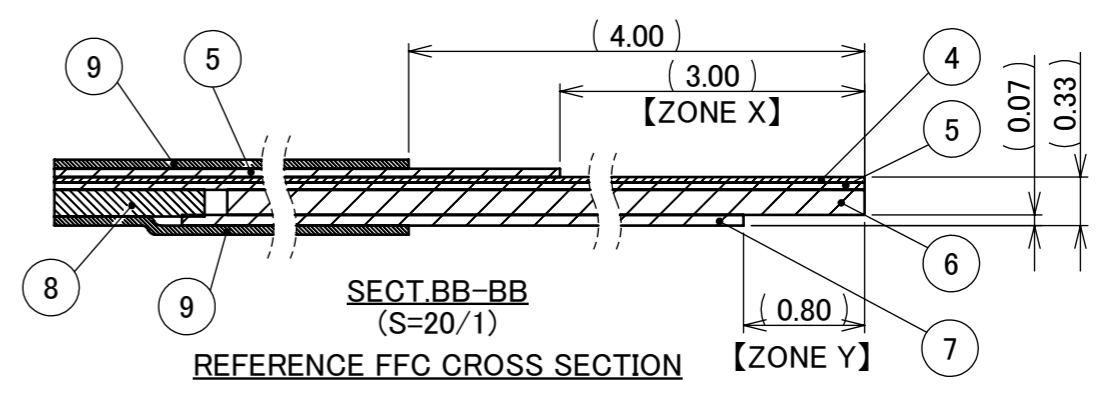
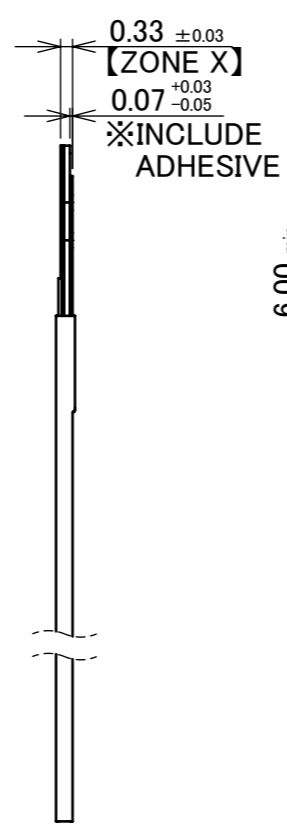
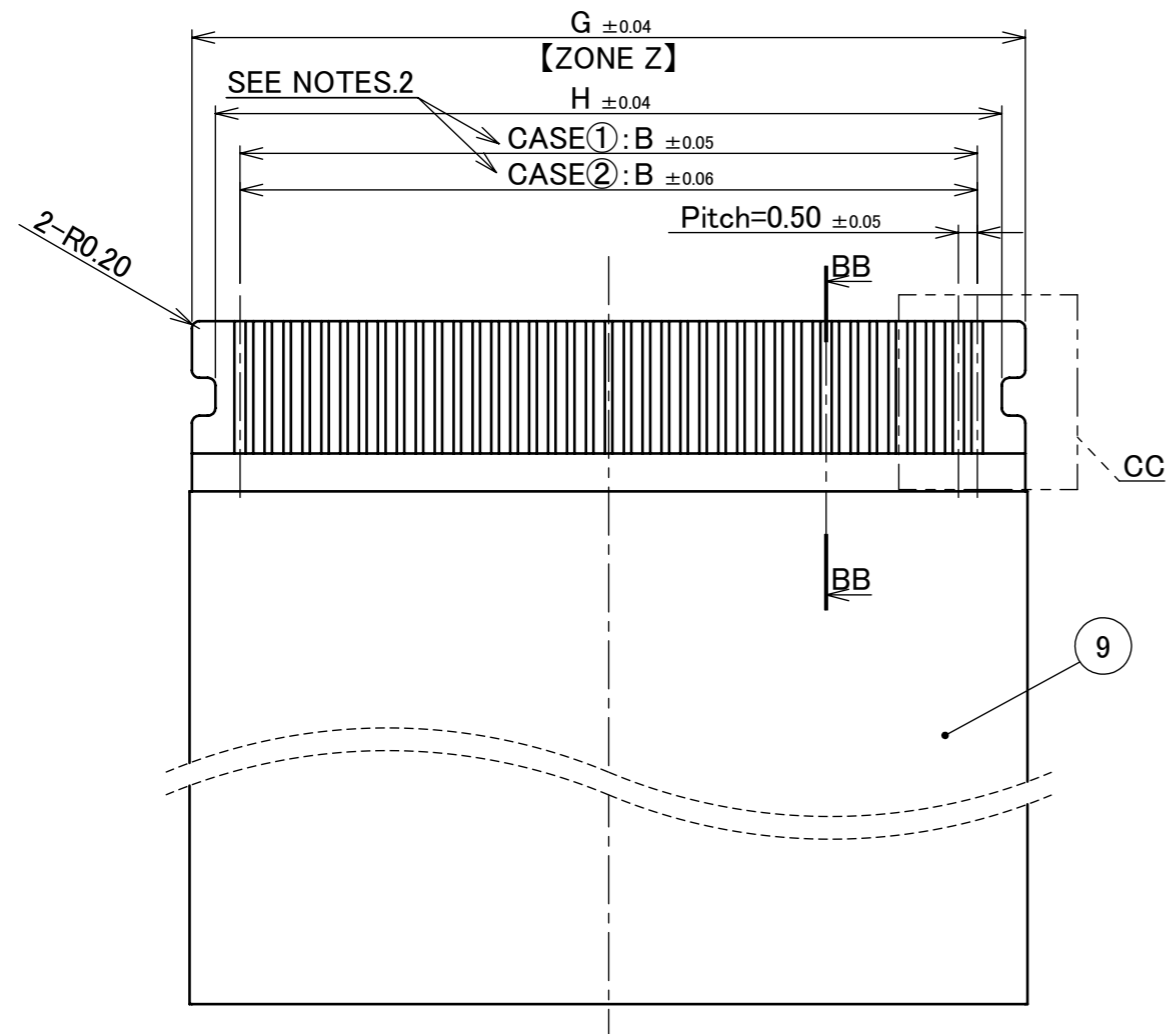
REV.	ECN	BY	DATE	APP.	APP.	CHK.	DATE	APP.	CHK.	DATE	PROJECTION	SERIES No.	TITLE	SCALE	UNIT	SIZE	SHEET	REV.
											⊕	R0	EVAFLEX® 5-VS TYPE R	5:1	mm	A3	1/5	2
REVISION RECORD					Y.Shimada					DWG. No. 20893		CUSTOMER COPY		I-PEX				

ITEMS	SPECIFICATION
RATING VOLTAGE	200V AC/DC (PER CONTACT PIN)
RATING AMPERAGE (FOR CONTACT)	0.3A AC/DC (PER CONTACT PIN) IN CASE OF APPLYING 0.5A PER CONTACT PIN, THE TOTAL CURRENT OF THE WHOLE CONNECTOR SHALL BE 15.0A OR LOWER.
OPERATING TEMPERATURE	233~378K(-40°C~+105°C)
OPERATING HUMIDITY	85% MAX.(NON-CONDENSING)
CONTACT RESISTANCE (FOR SIGNAL CONTACT)	INITIAL : 60mohm MAX. / AFTER TEST : $\triangle$ 40mohm MAX.
INSULATION RESISTANCE	INITIAL : 100Mohm MIN. / AFTER TEST : 100Mohm MIN.
DIELECTRIC WITHSTANDING VOLTAGE	AC250V 1min
DURABILITY	30 CYCLES
MATING FORCE (INITIAL / AFTER TEST)	30P : 18.0N MAX. 40P : 24.0N MAX. 50P : 30.0N MAX.
UNMATING FORCE (INITIAL / AFTER TEST)	30P : 3.0N MIN. 40P : 4.0N MIN. 50P : 5.0N MIN.
COPLANARITY	0.10 MAX.
PRODUCT SPECIFICATION	PRS-2527
TEST REPORT	TR-18083
PACKING STANDARD	300-997
INSTRUCTION MANUAL	HIM-12003
APPEARANCE CRITERIA No.	QLS-A***

ANGLE	$\pm 2^\circ$	6 OVER 30 MAX.	$\pm 0.3$	PROJECTION 	SERIES No. R0	CUSTOMER COPY		
6 MAX.	$\pm 0.2$	30 OVER 120 MAX.	$\pm 0.5$					
GENERAL TOLERANCE.				TITLE EVAFLEX® 5-VS TYPE R	SCALE 5:1	<b>I-PEX</b>		
DWG.	DATE							
CHK.								
APP.								
DWG. No.	20893			SIZE A3	SHEET 2/5	REV. 2		

FOR	POS.	B	G	H
20893-030E-02	30P	14.50	17.04	15.80
20893-040E-02	40P	19.50	22.04	20.80
20893-050E-02	50P	24.50	27.04	25.80

### RECOMMENDED FFC DIMENSION



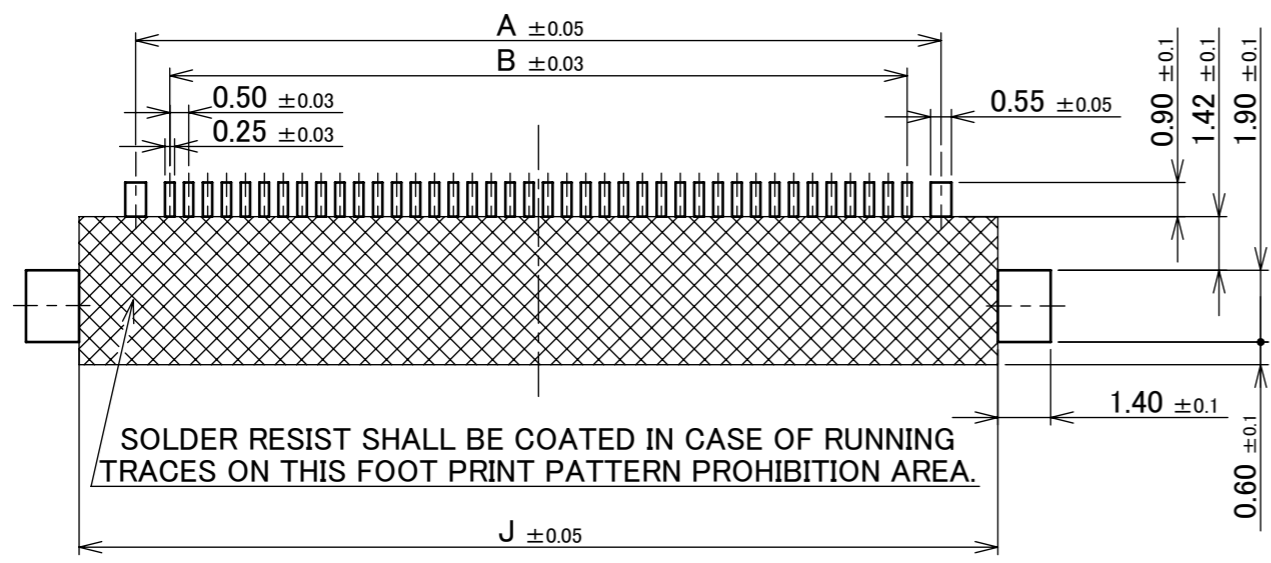
- NOTES
1. DIFFERENTIAL IMPEDANCE : 100 Ω
  2. MANUFACTURE CASE ① or CASE ②
  3. SELECT A MATERIAL WITH A SOFTENING TEMPERATURE OF 85°C OR HIGHER FOR THE PATTERN ADHESIVE PART OF FFC.

NO.	DISCRIPTION	MATERIAL	FINISH , REMARKS
9	SHIELD TAPE	METALIC FILM	-
8	INTERLAYER	ARBITRARY	-
7	GROUND PLATE	METARIC FILM	POLISH or HALF POLISH Sn PLATING
6	REINFORCED TAPE	ARBITRARY	-
5	INSULATION FILM	ARBITRARY	-
4	CONDUCTOR	COPPER ALLOY	CONTACT AREA: Au 0.05 μ m MIN. OVER Ni 0.5 μ m MIN.

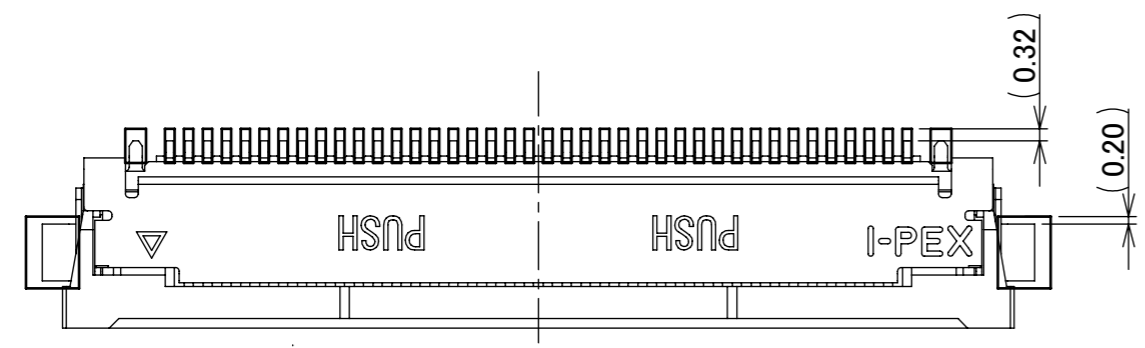
ANGLE	±2°	6 OVER 30 MAX.	±0.3	PROJECTION ⊕	SERIES No. R0	CUSTOMER COPY
	6 MAX.	±0.2	30 OVER 120 MAX.			
GENERAL TOLERANCE.				TITLE EVAFLEX® 5-VS TYPE R		SCALE 5:1
DWG.	DATE			DWG. No. 20893		UNIT mm
CHK.						SHEET 3/5
APP.						

**Recommended P/N**      **20893-0\*\*E-02**

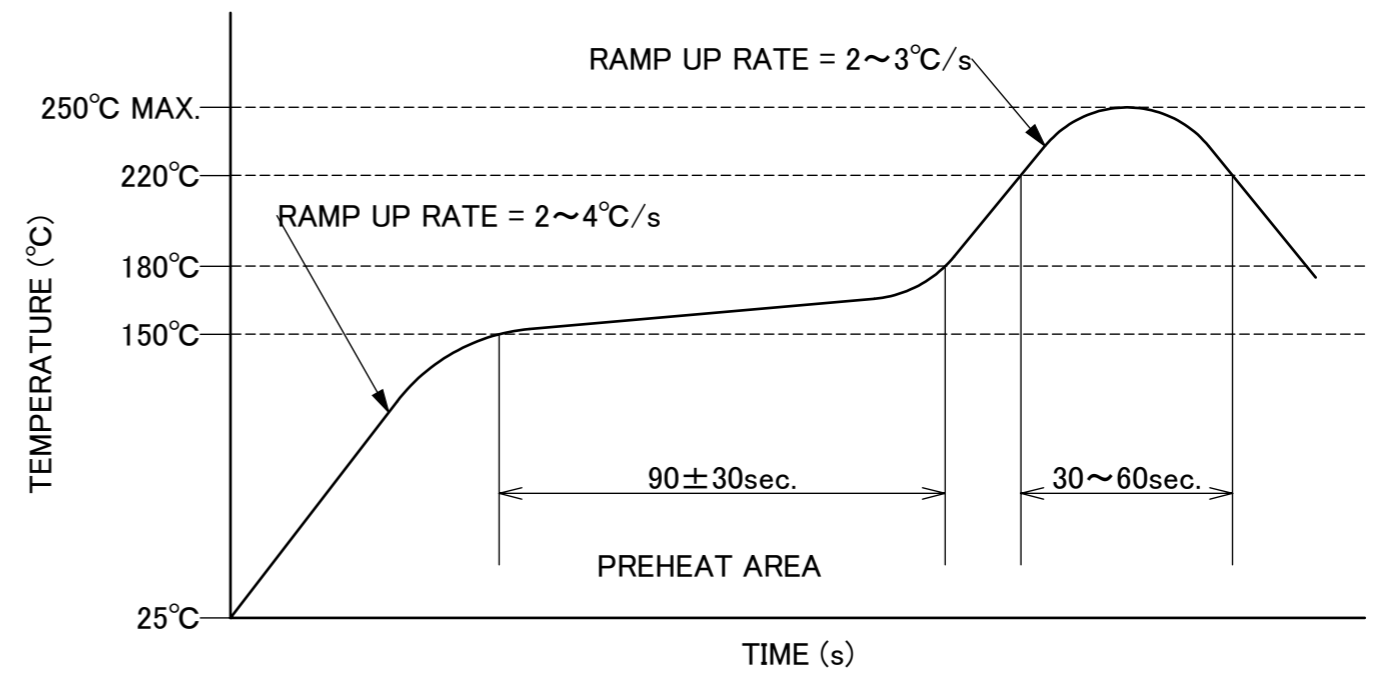
PART NO.	POS.	A	B	J
20893-030E-02	30P	16.30	14.50	19.30
20893-040E-02	40P	21.30	19.50	24.30
20893-050E-02	50P	26.30	24.50	29.30



**RECOMMENDED PCB & METALMASK LAYOUT**  
**METALMASK THICKNESS: t=0.12**



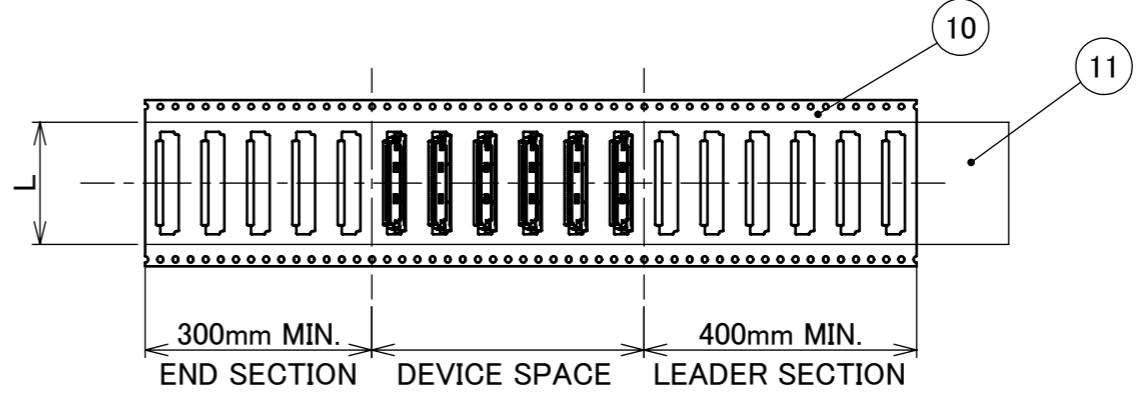
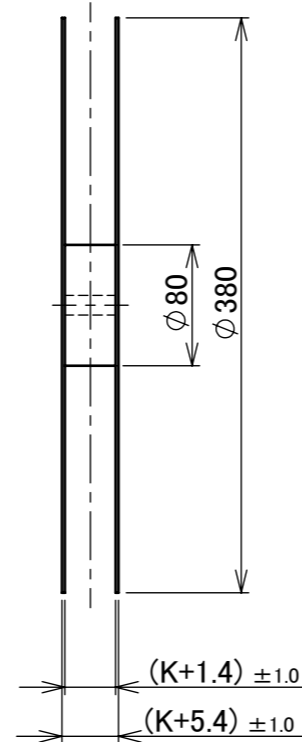
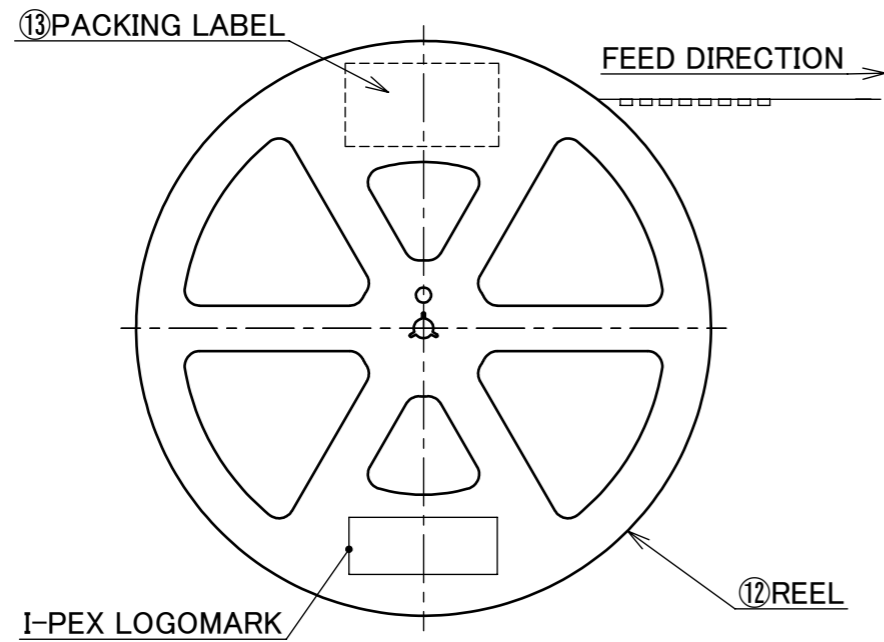
**CONNECTOR ON RECOMMENDED FOOTPRINT PATTERN**



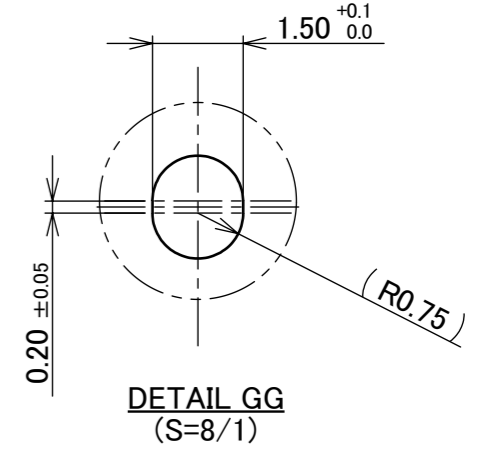
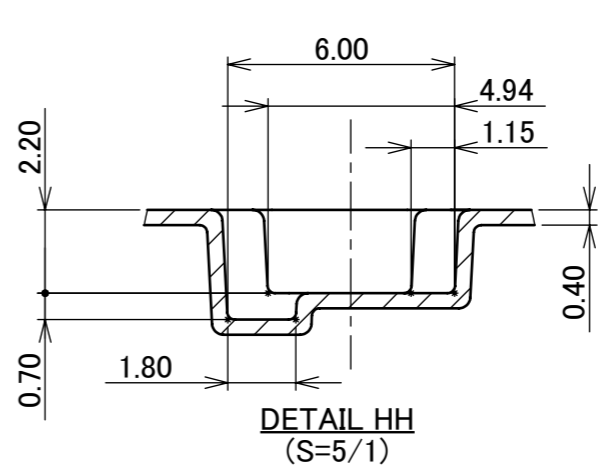
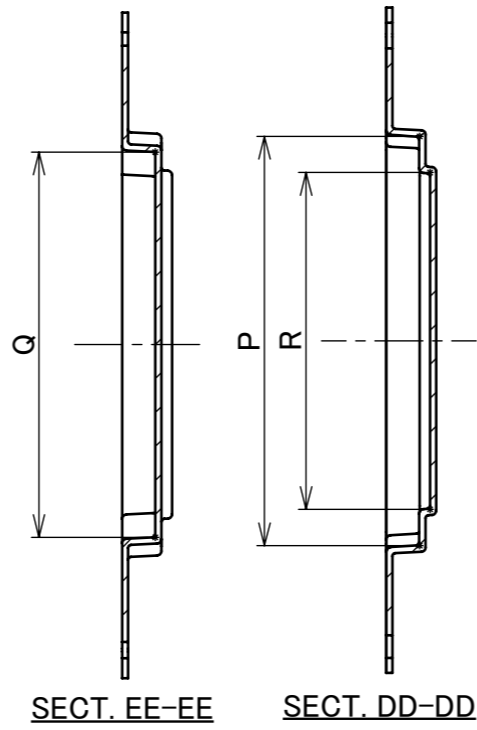
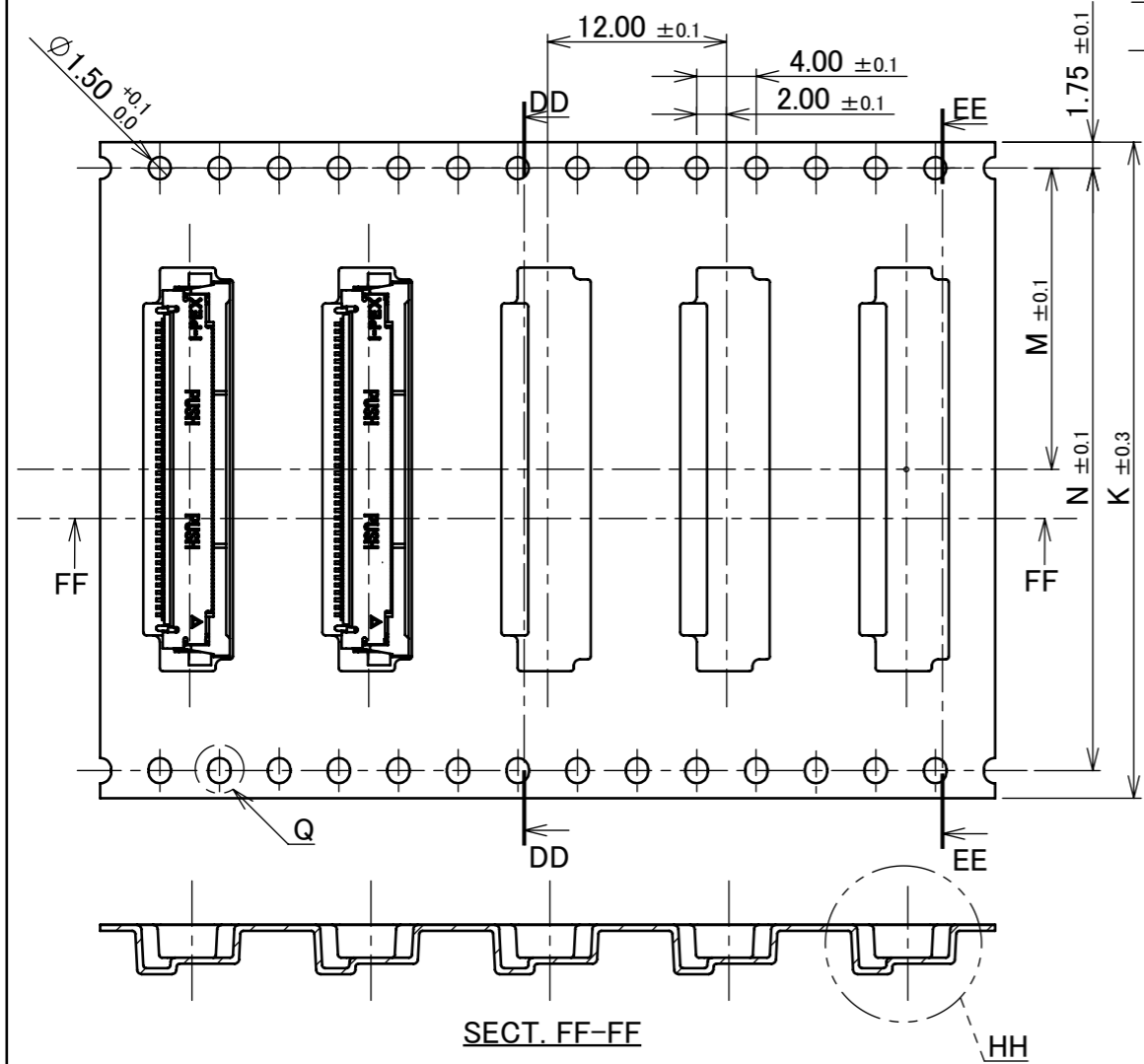
**REFLOW TEMPERATURE PROFILE**  
**SENJU METAL INDUSTRY CO., LTD. : M705-SHF(Sn96.5 Ag3.0 Cu0.5)**

ANGLE	±2°	6 OVER 30 MAX.	±0.3	PROJECTION ⊕	SERIES No. R0	CUSTOMER COPY		
6 MAX.	±0.2	30 OVER 120 MAX.	±0.5					
GENERAL TOLERANCE.				TITLE EVAFLEX® 5-VS TYPE R	SCALE 5:1	<b>I-PEX</b>		
DWG.	DATE							
CHK.								
APP.								
				DWG. No.	20893	SIZE A3	SHEET 4/5	REV. 2

PART NO.	K	L	M	N	P	Q	R	QTY. PER EMBOSS REEL (PIECES / REEL)	QTY. PER PACKING CARTON (REELS / CARTON)
20893-030E-02	32.00	25.50	14.20	28.40	22.05	20.47	17.25	2300 PIECES / REEL	4REELS / CARTON = 9200 PIECES / CARTON
20893-040E-02	44.00	32.30	20.20	40.40	27.05	25.47	22.25		3REELS / CARTON = 6900 PIECES / CARTON
20893-050E-02		37.40			32.05	30.47	27.25		



- NOTES.
- TAPING SPECIFICATION FOLLOWS JIS C 0806 (IEC 60286-3).
  - MAKE EMPTY SECTION OF LEADER AND END ON EACH END OF THE TAPE.
  - TOP TAPE SHALL NOT STICK OUT FROM EMBOSS TAPE.
  - TOP TAPE SHALL NOT COVER FEED HOLE.



NO.	DISCRIPTION	MATERIAL	FINISH , REMARKS
13	PACKING LABEL	-	-
12	REEL	PS	BLACK
11	TOP TAPE	PET t=0.061 TRANSPARENCY	ANTI-STATIC TYPE
10	EMBOSS TAPE	PS t=0.40 TRANSPARENCY	ANTI-STATIC TYPE

ANGLE	$\pm 2^\circ$	6 OVER 30 MAX.	$\pm 0.3$	PROJECTION ①	SERIES No. R0	CUSTOMER COPY				
	6 MAX.	$\pm 0.2$	30 OVER 120 MAX.						$\pm 0.5$	
GENERAL TOLERANCE.						TITLE EVAFLEX® 5-VS TYPE R	SCALE	<b>I-PEX</b>		
DWG.	DATE				2:1					
CHK.					UNIT		mm			
APP.					SIZE		A3			SHEET
DWG. No. 20893										