

Recommended P/N 20720-0**E-02

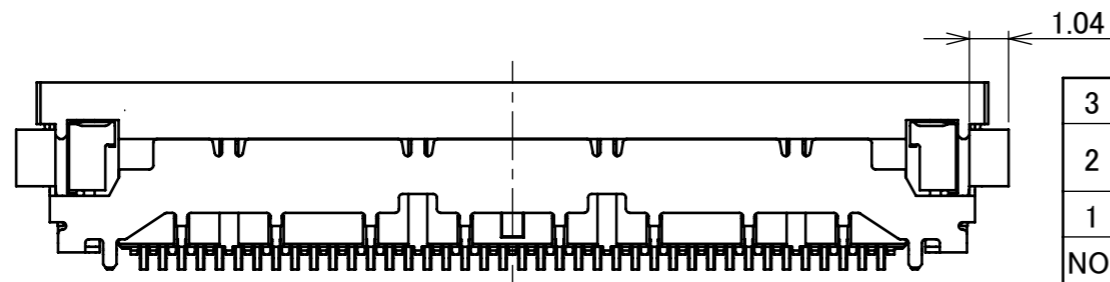
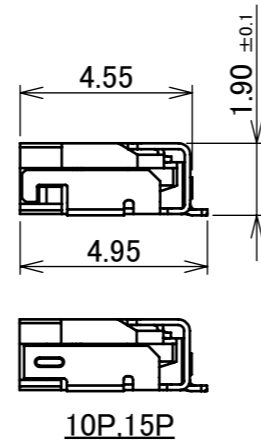
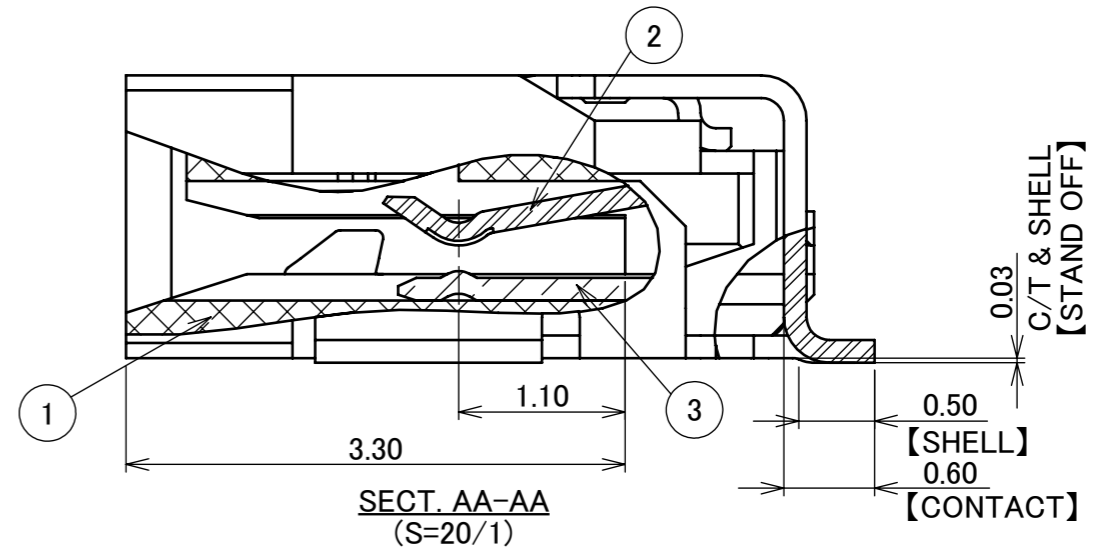
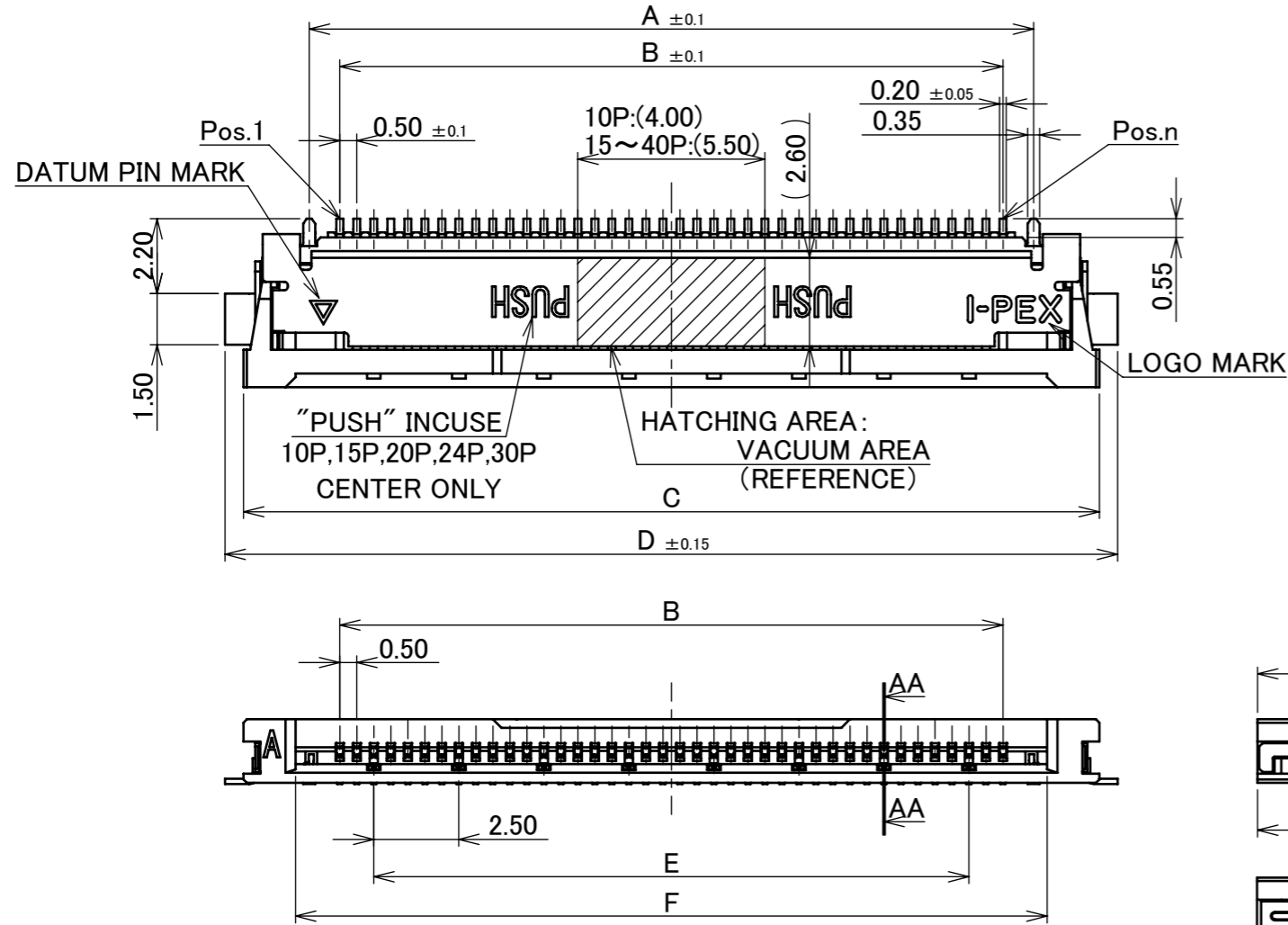
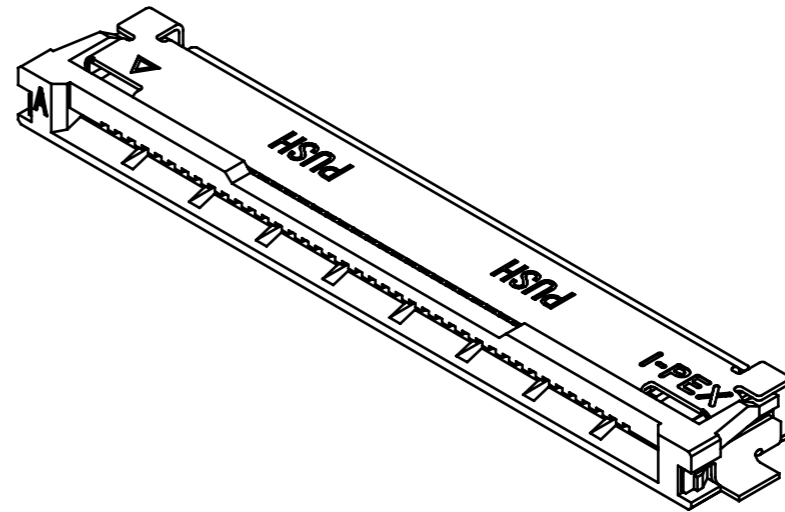
PART NO.	POS.	A	B	C	D	E	F
20720-010E-02	10P	6.30	4.50	10.17	11.25	2.50	7.10
20720-015E-02	15P	8.80	7.00	12.67	13.75	5.00	9.60
20720-020E-02	20P	11.30	9.50	15.17	16.25	7.50	12.10
20720-024E-02	24P	13.30	11.50	17.17	18.25	7.50	14.10
20720-030E-02	30P	16.30	14.50	20.17	21.25	12.50	17.10
20720-040E-02	40P	21.30	19.50	25.17	26.25	17.50	22.10



Halogen Free



RoHS Compliant



NO.	DISCRIPTION	MATERIAL	FINISH , REMARKS
3	SHELL	PHOSPHOR BRONZE	Sn OVER Ni PLATING
2	CONTACT	CORSON ALLOY	Au OVER Ni PLATING CONTACT AREA: Au 0.03 μm MIN. OVER Ni 1.00 μm MIN.
1	HOUSING	LCP	UL94V-0, BLACK

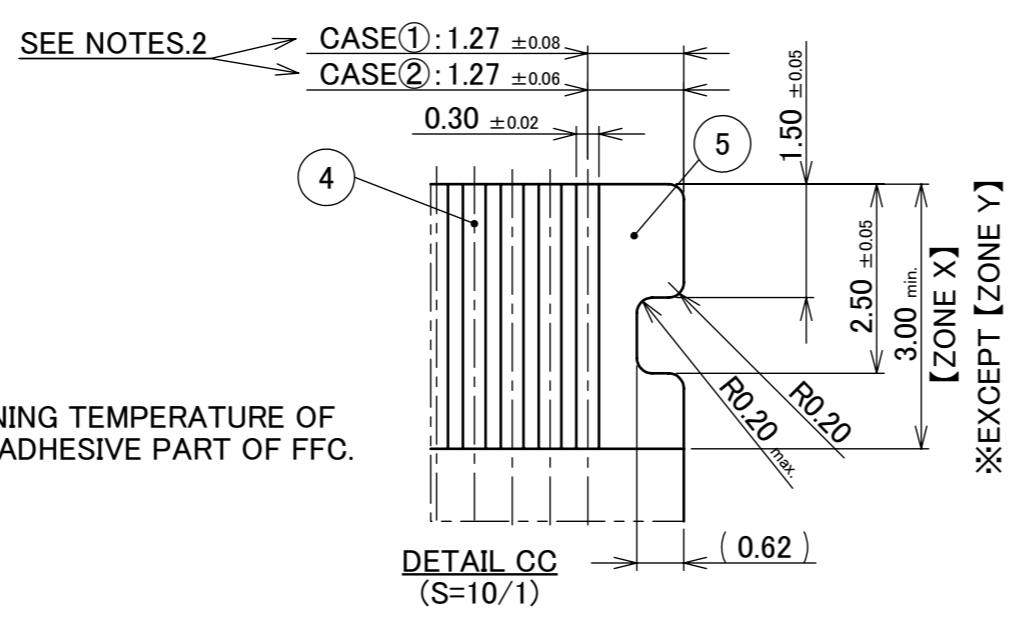
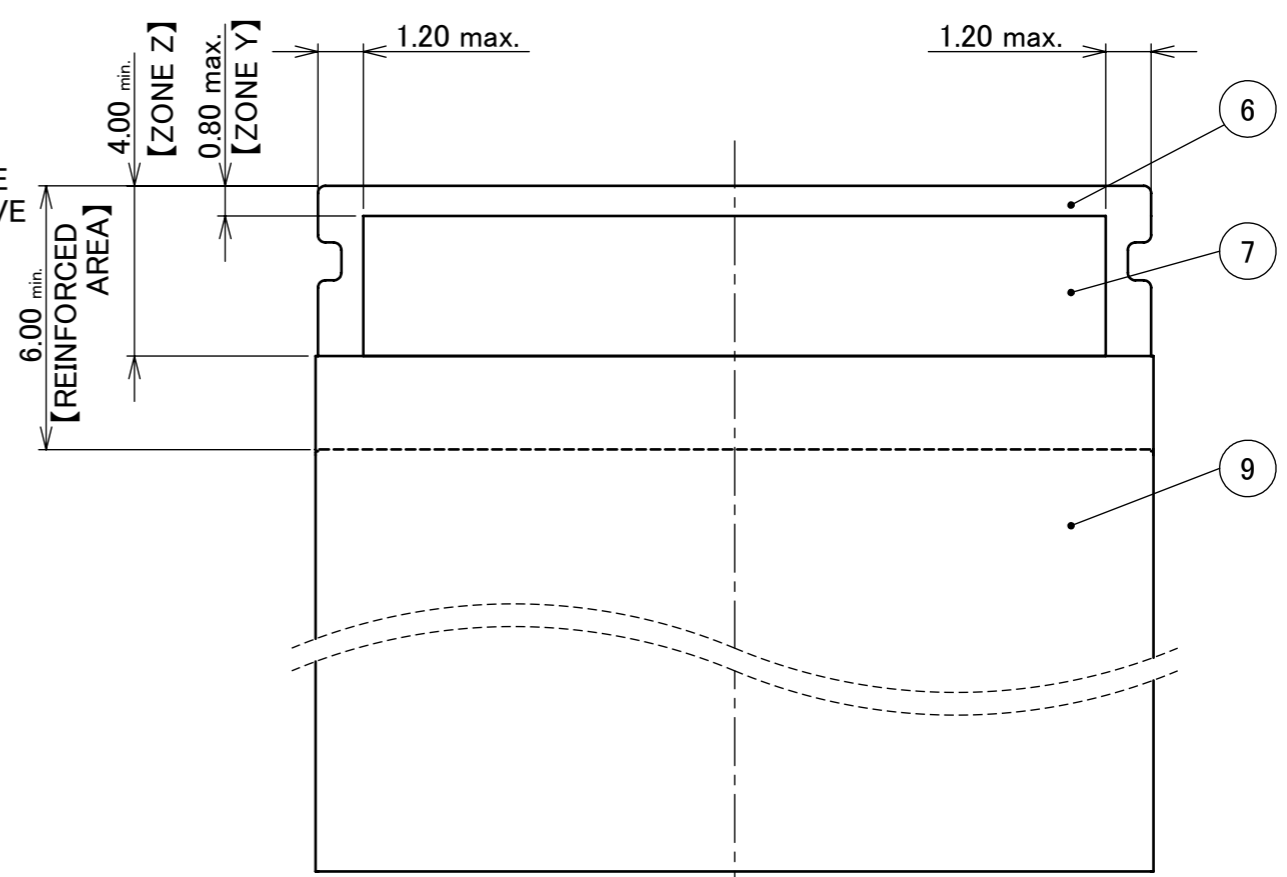
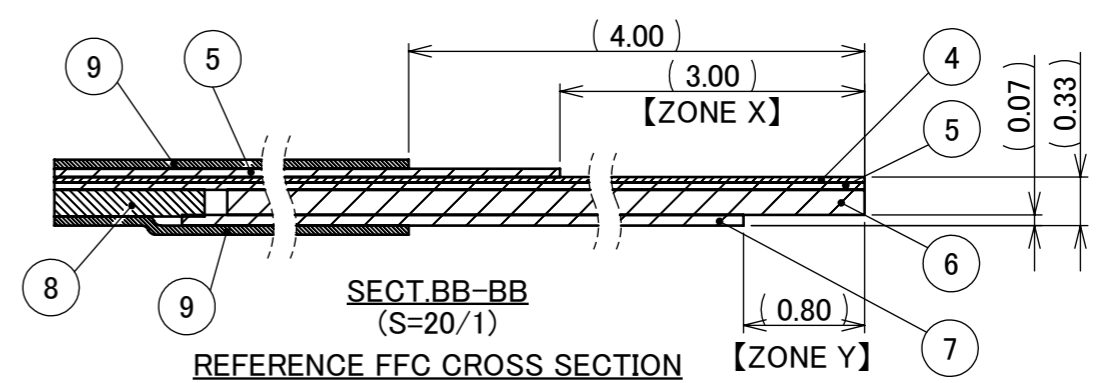
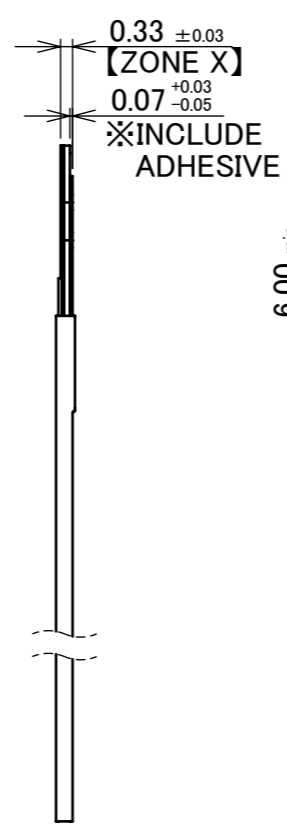
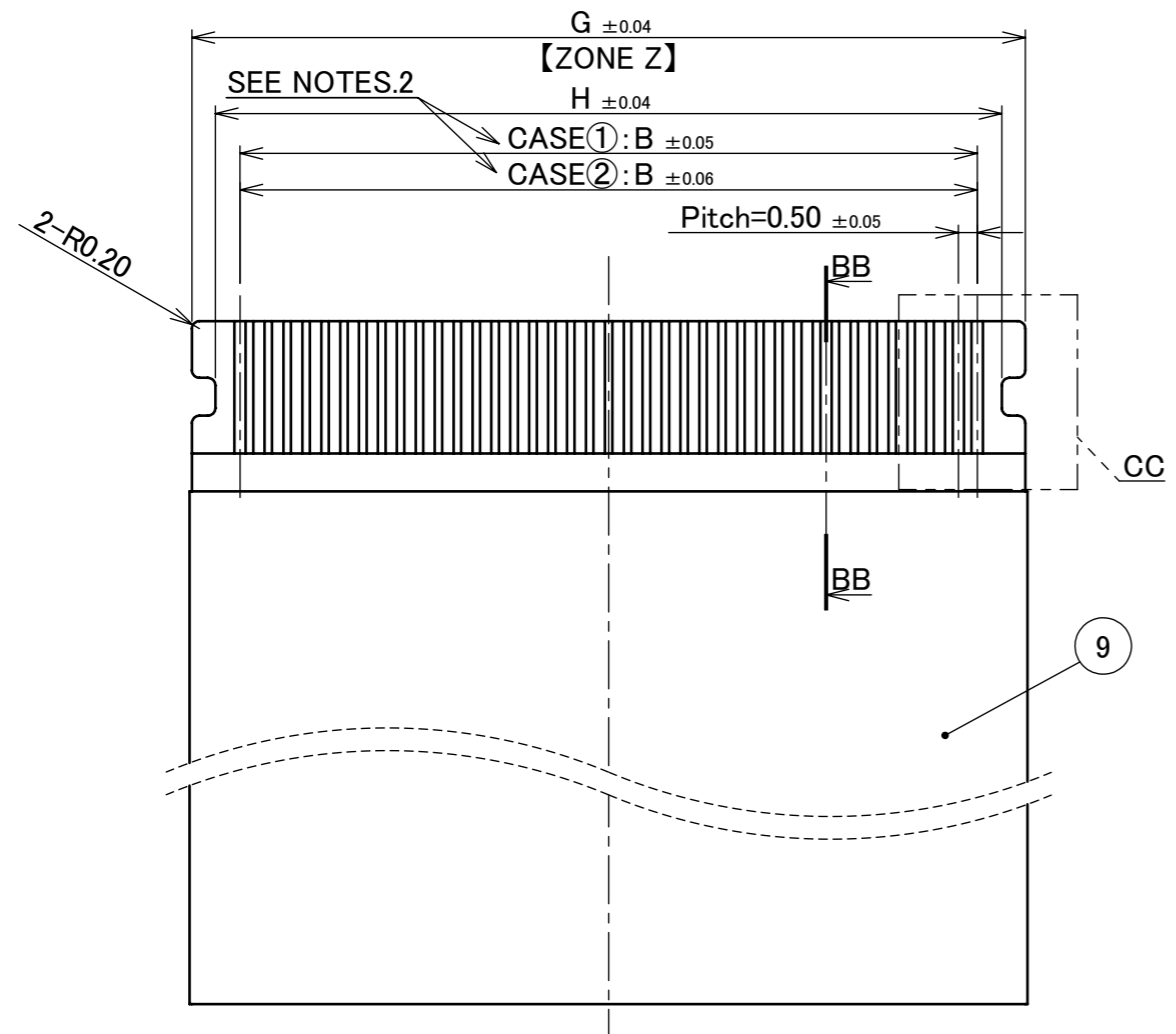
REV.	ECN	BY	DATE	APP.	APP.	ANGLE	±2°	6 OVER 30 MAX.	±0.3	PROJECTION	SERIES No.	CUSTOMER COPY	
6	Z220271	K.H	Mar./10/'22	H.I	ANGLE	±2°	6 OVER 30 MAX.	±0.3			R1	CUSTOMER COPY	
5	Z210974	K.H	Aug./23/'21	H.I	6 MAX.	±0.2	30 OVER 120 MAX.	±0.5					
4	Z180880	T.T	July/05/'18	Y.S	GENERAL TOLERANCE.					TITLE EVAFLEX® 5-VS TYPE CH	SCALE		
3	Z170513	T.T	May/02/'17	Y.S	DWG.	DATE					5:1		
2	Z160913	K.H	July/29/'16	J.T	T.Tanigawa		2015/11/25				UNIT		
1	Z160372	T.T	Nov./25/'15	J.T	CHK.	T.Kurachi					mm		
REV.	ECN	BY	DATE	APP.	APP.	J.Tateishi		DWG. No.	20720		SIZE	SHEET	REV.
REVISION RECORD					J.Tateishi		20720		A3	1/5	6		

ITEMS	SPECIFICATION
RATING VOLTAGE	200V AC/DC (PER CONTACT PIN)
RATING AMPERAGE (FOR CONTACT)	0.3A AC/DC (PER CONTACT PIN) IN CASE OF APPLYING 0.5A PER CONTACT PIN, THE TOTAL CURRENT OF THE WHOLE CONNECTOR SHALL BE 15.0A OR LOWER.
OPERATING TEMPERATURE	233~378K(-40°C~+105°C)
OPERATING HUMIDITY	85% MAX.(NON-CONDENSING)
CONTACT RESISTANCE (FOR SIGNAL CONTACT)	INITIAL : 60mohm MAX. / AFTER TEST : \triangle 40mohm MAX.
INSULATION RESISTANCE	INITIAL : 100Mohm MIN. / AFTER TEST : 100Mohm MIN.
DIELECTRIC WITHSTANDING VOLTAGE	AC250V 1min
DURABILITY	30 CYCLES
MATING FORCE (INITIAL / AFTER TEST)	10P : 6.0N MAX. 15P : 9.0N MAX. 20P : 12.0N MAX. 24P : 14.4N MAX. 30P : 18.0N MAX. 40P : 24.0N MAX.
UNMATING FORCE (INITIAL / AFTER TEST)	10P : 1.0N MIN. 15P : 1.5N MIN. 20P : 2.0N MIN. 24P : 2.4N MIN. 30P : 3.0N MIN. 40P : 4.0N MIN.
COPLANARITY	0.10 MAX.
PRODUCT SPECIFICATION	PRS-2224
TEST REPORT	TR-16039
PACKING STANDARD	300-997
INSTRUCTION MANUAL	HIM-12003
APPEARANCE CRITERIA No.	QLS-A***

ANGLE	$\pm 2^\circ$	6 OVER 30 MAX.	± 0.3	PROJECTION 	SERIES No. R1	CUSTOMER COPY			
	6 MAX.	± 0.2	30 OVER 120 MAX.			± 0.5	SCALE 5:1	I-PEX	
GENERAL TOLERANCE.				TITLE EVAFLEX® 5-VS TYPE CH		UNIT mm			
DWG.	DATE			DWG. No. 20720		SIZE A3	SHEET 2/5	REV. 6	
CHK.									
APP.									

FOR	POS.	B	G	H
20720-010E-02	10P	4.50	7.04	5.80
20720-015E-02	15P	7.00	9.54	8.30
20720-020E-02	20P	9.50	12.04	10.80
20720-024E-02	24P	11.50	14.04	12.80
20720-030E-02	30P	14.50	17.04	15.80
20720-040E-02	40P	19.50	22.04	20.80

RECOMMENDED FFC DIMENSION



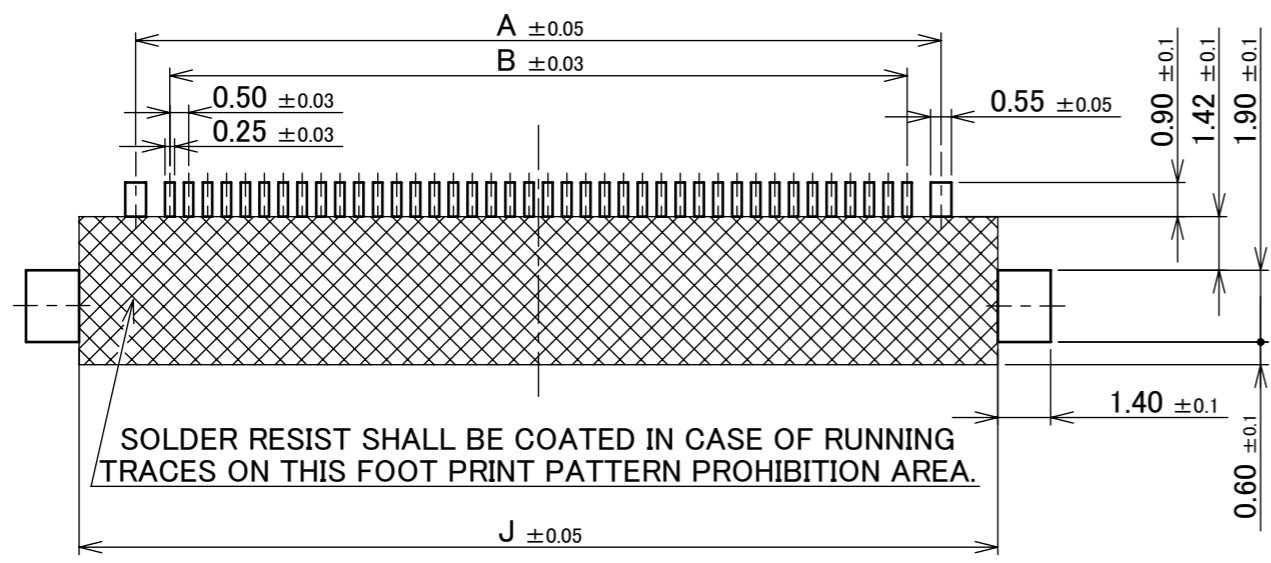
- NOTES
1. DIFFERENTIAL IMPEDANCE : 100Ω
 2. MANUFACTURE CASE① or CASE②
 3. SELECT A MATERIAL WITH A SOFTENING TEMPERATURE OF 85°C OR HIGHER FOR THE PATTERN ADHESIVE PART OF FFC.

NO.	DISCRIPTION	MATERIAL	FINISH , REMARKS
9	SHIELD TAPE	METALIC FILM	-
8	INTERLAYER	ARBITRARY	-
7	GROUND PLATE	METARIC FILM	POLISH or HALF POLISH Sn PLATING
6	REINFORCED TAPE	ARBITRARY	-
5	INSULATION FILM	ARBITRARY	-
4	CONDUCTOR	COPPER ALLOY	CONTACT AREA: Au 0.05 μ m MIN. OVER Ni 0.5 μ m MIN.

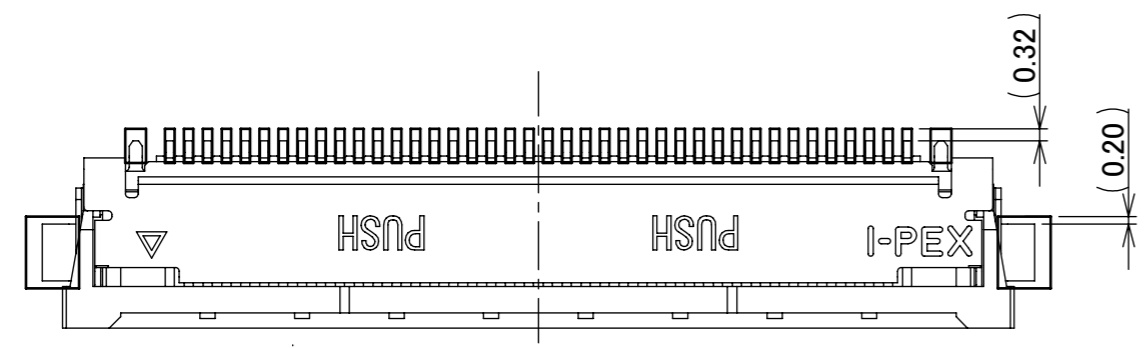
ANGLE	±2°	6 OVER 30 MAX.	±0.3	PROJECTION ⊕	SERIES No. R1	CUSTOMER COPY
	6 MAX.	±0.2	30 OVER 120 MAX.			
GENERAL TOLERANCE.				TITLE EVAFLEX® 5-VS TYPE CH		SCALE 5:1
DWG.	DATE					UNIT mm I-PEX
CHK.	DATE					
APP.	DATE					
				DWG. No.	20720	SIZE A3
						SHEET 3/5
						REV. 6

Recommended P/N 20720-0**E-02

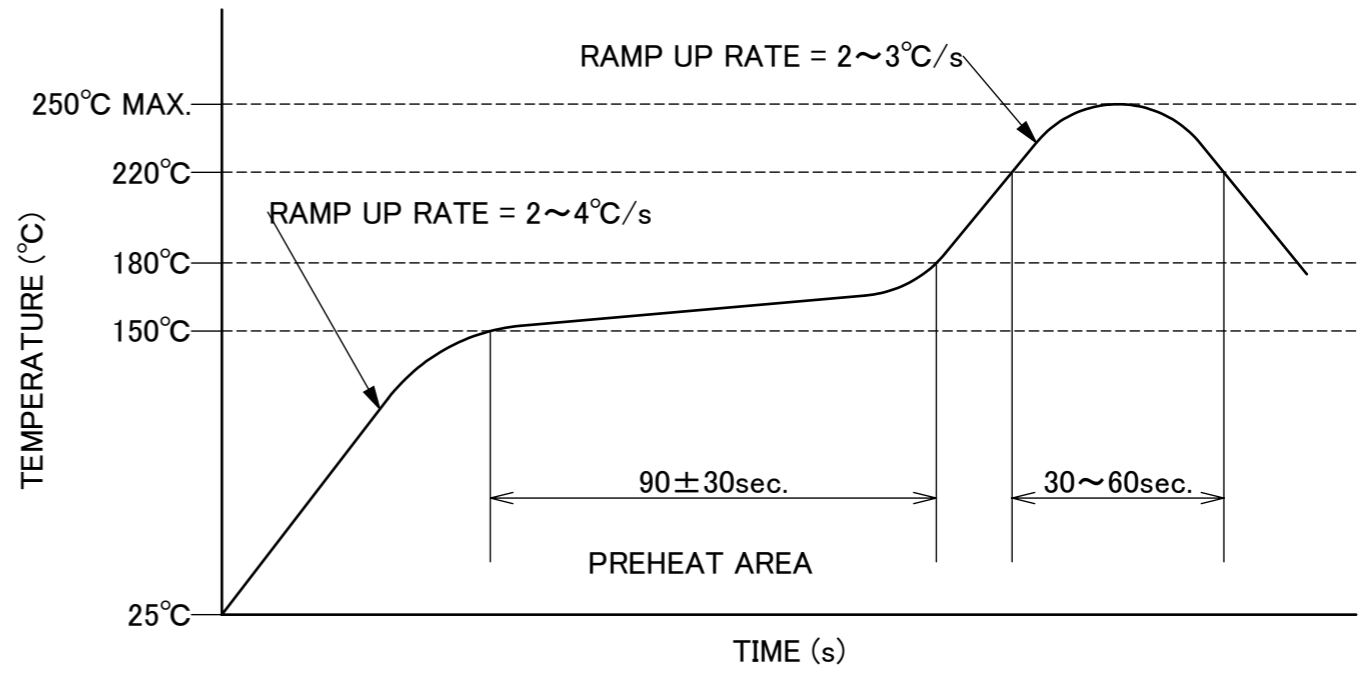
PART NO.	POS.	A	B	J
20720-010E-02	10P	6.30	4.50	9.30
20720-015E-02	15P	8.80	7.00	11.80
20720-020E-02	20P	11.30	9.50	14.30
20720-024E-02	24P	13.30	11.50	16.30
20720-030E-02	30P	16.30	14.50	19.30
20720-040E-02	40P	21.30	19.50	24.30



RECOMMENDED PCB & METALMASK LAYOUT
METALMASK THICKNESS: t=0.12



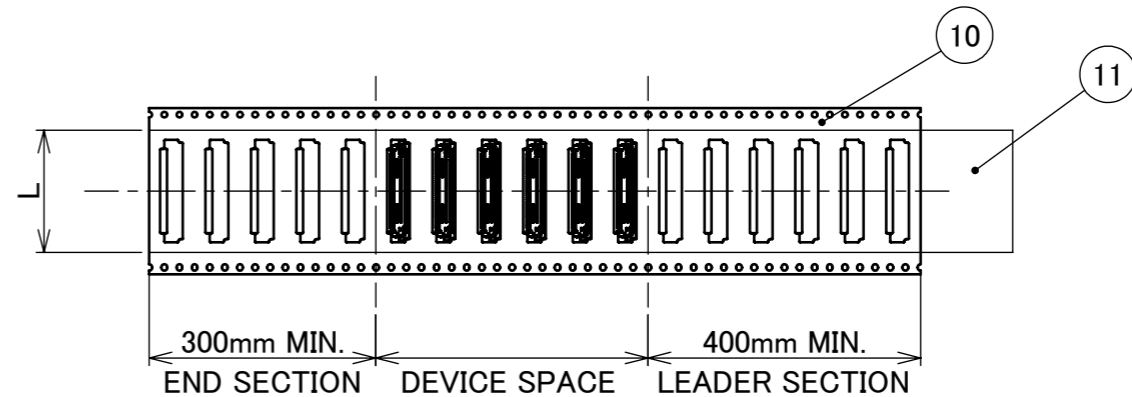
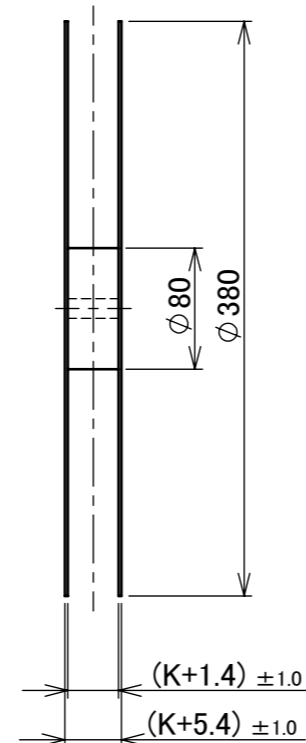
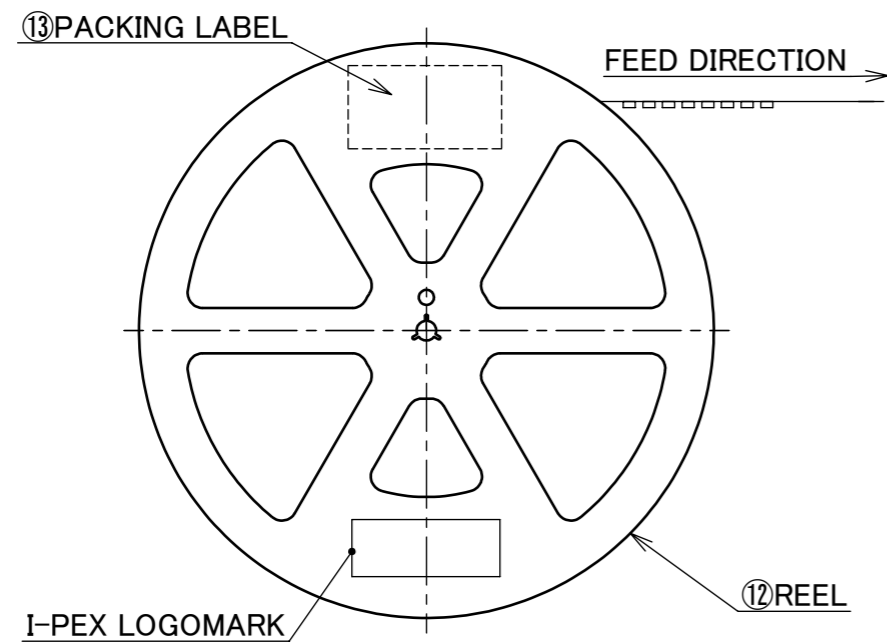
CONNECTOR ON RECOMMENDED FOOTPRINT PATTERN



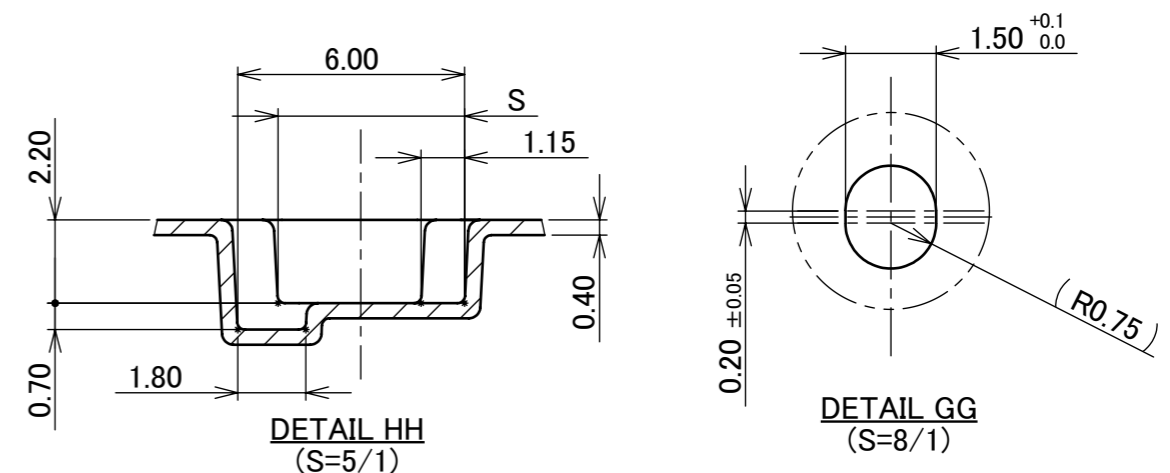
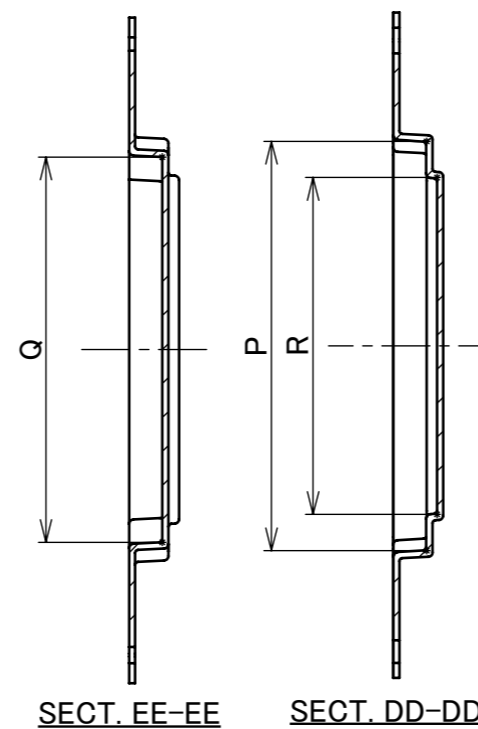
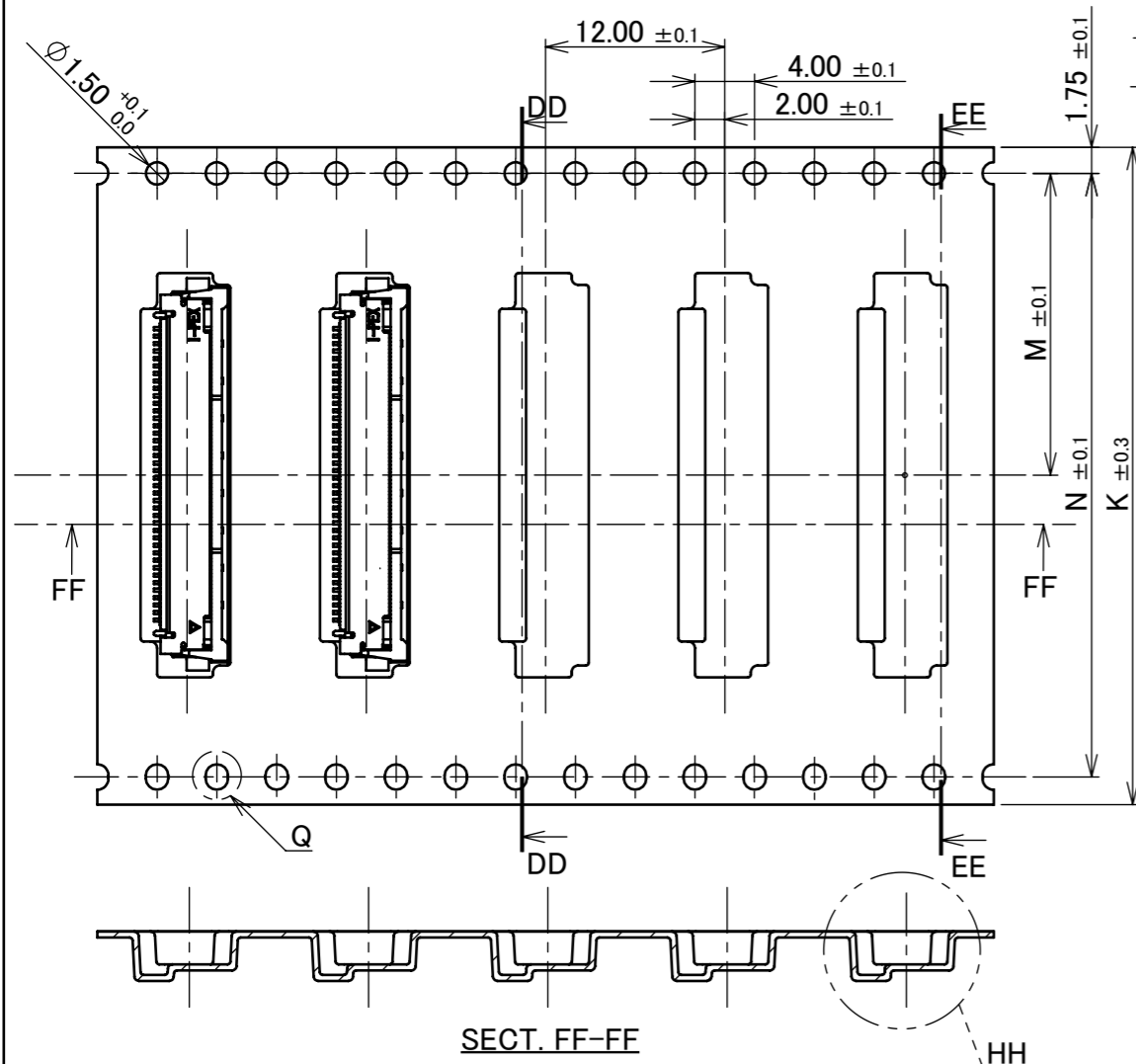
REFLOW TEMPERATURE PROFILE
SENJU METAL INDUSTRY CO., LTD. : M705-SHF(Sn96.5 Ag3.0 Cu0.5)

ANGLE	±2°	6 OVER 30 MAX.	±0.3	PROJECTION ⊕	SERIES No. R1	CUSTOMER COPY		
	6 MAX.	±0.2	30 OVER 120 MAX.					±0.5
GENERAL TOLERANCE.				TITLE EVAFLEX® 5-VS TYPE CH	SCALE 5:1	UNIT mm		
DWG.	DATE							
CHK.	DATE							
APP.	DATE							
				DWG. No.	20720	SIZE A3	SHEET 4/5	REV. 6

PART NO.	K	L	M	N	P	Q	R	S	QTY. PER EMBOSS REEL (PIECES / REEL)	QTY. PER PACKING CARTON (REELS / CARTON)	
20720-010E-02	24.00	17.30	11.50	-	12.05	10.42	7.35	4.74	2300 PIECES / REEL	5REELS / CARTON = 11500 PIECES / CARTON	
20720-015E-02		19.30			14.55	12.92	9.85				
20720-020E-02		20.30			17.05	15.47	12.25				
20720-024E-02	32.00	25.50	14.20	28.40	19.05	17.47	14.25	4.94			4REELS / CARTON = 9200 PIECES / CARTON
20720-030E-02					22.05	20.47	17.25				
20720-040E-02	44.00	32.30	20.20	40.40	27.05	25.47	22.25		3REELS / CARTON = 6900 PIECES / CARTON		



- NOTES.
1. TAPING SPECIFICATION FOLLOWS JIS C 0806 (IEC 60286-3).
 2. MAKE EMPTY SECTION OF LEADER AND END ON EACH END OF THE TAPE.
 3. TOP TAPE SHALL NOT STICK OUT FROM EMBOSS TAPE.
 4. TOP TAPE SHALL NOT COVER FEED HOLE.



NO.	DISCRIPTION	MATERIAL	FINISH , REMARKS
13	PACKING LABEL	-	-
12	REEL	PS	BLACK
11	TOP TAPE	PET t=0.061 TRANSPARENCY	ANTI-STATIC TYPE
10	EMBOSS TAPE	PS t=0.40 TRANSPARENCY	ANTI-STATIC TYPE

ANGLE	$\pm 2^\circ$	6 OVER 30 MAX.	± 0.3	PROJECTION		SERIES No.	R1	CUSTOMER COPY				
6 MAX.	± 0.2	30 OVER 120 MAX.	± 0.5	GENERAL TOLERANCE.		TITLE	EVAFLEX® 5-VS TYPE CH		SCALE	2:1	I-PEX	
DWG.	DATE		DWG. No.		20720	UNIT	mm	SIZE	A3	SHEET		5/5
CHK.						REV.	6					
APP.												