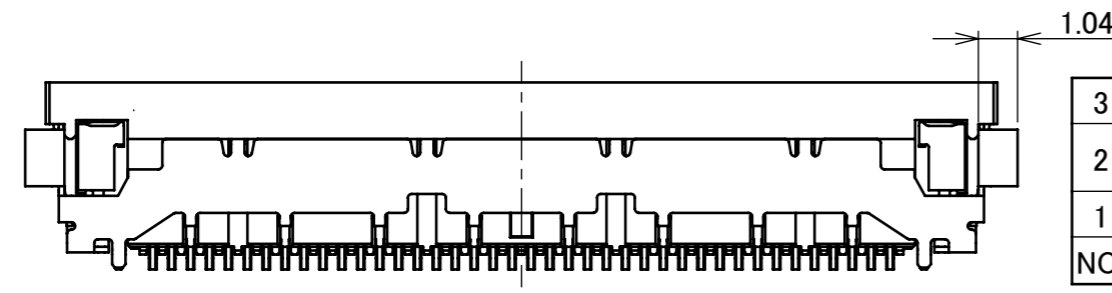
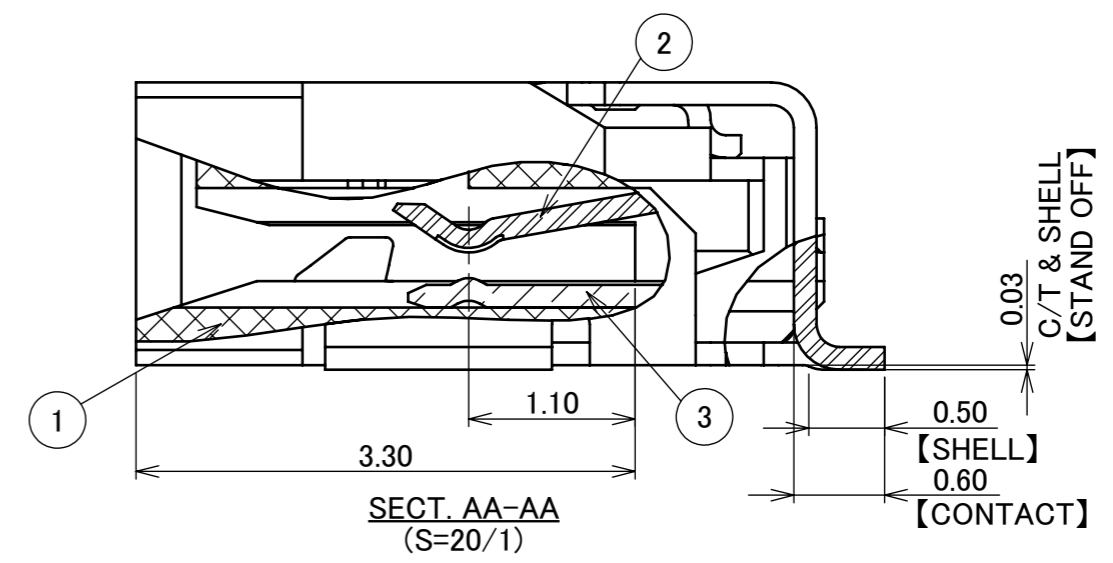
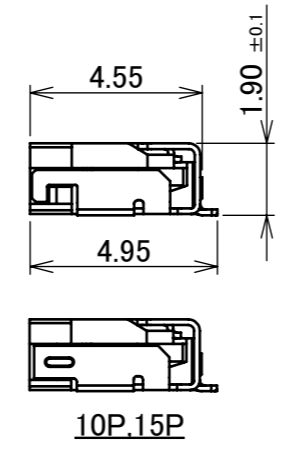
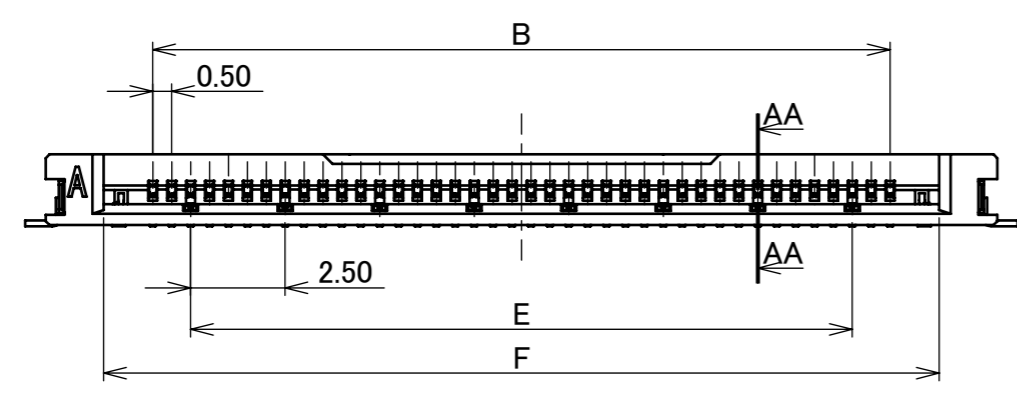
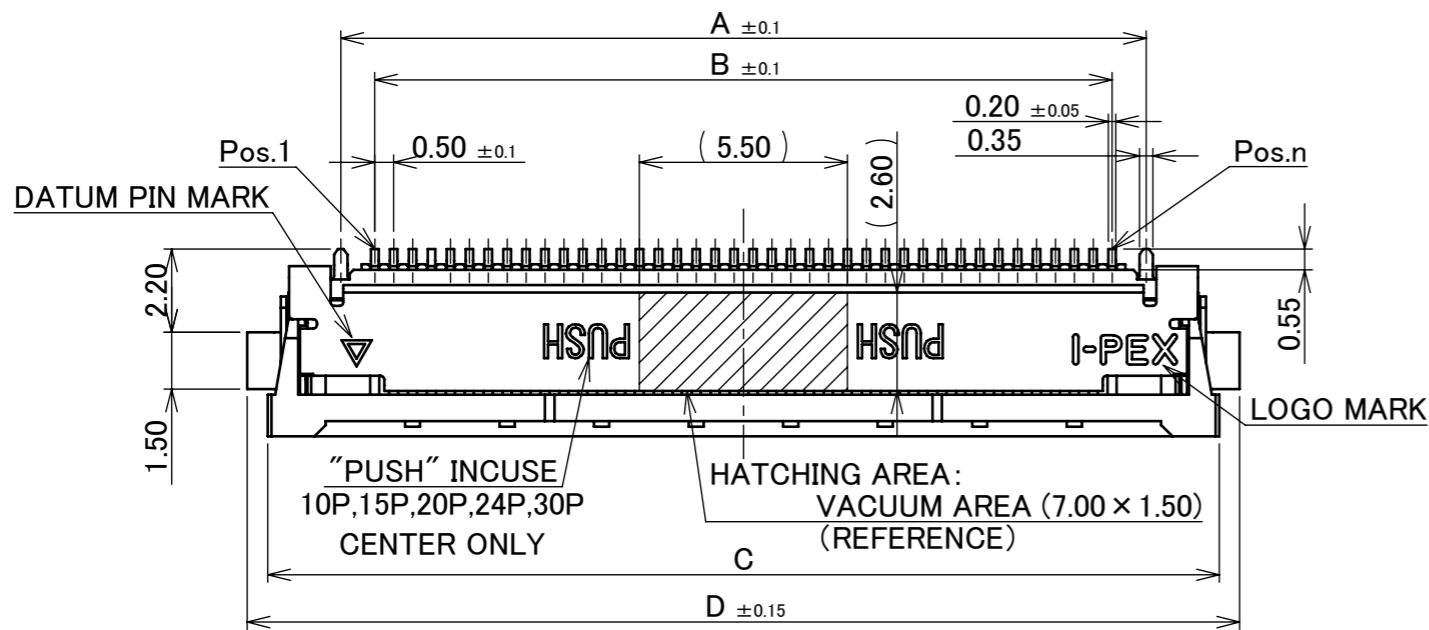
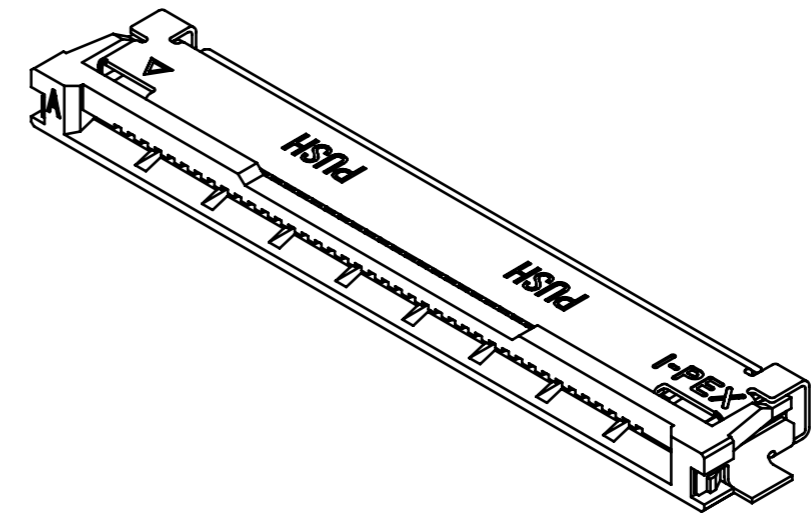


Recommended P/N		20535-0**E-02					
PART No.	POS.	A	B	C	D	E	F
20535-010E-02	10P	6.30	4.50	10.17	11.25	2.50	7.10
20535-015E-02	15P	8.80	7.00	12.67	13.75	5.00	9.60
20535-020E-02	20P	11.30	9.50	15.17	16.25	7.50	12.10
20535-024E-02	24P	13.30	11.50	17.17	18.25	7.50	14.10
20535-030E-02	30P	16.30	14.50	20.17	21.25	12.50	17.10
20535-040E-02	40P	21.30	19.50	25.17	26.25	17.50	22.10



NO.	DISCRIPTION	MATERIAL	FINISH, REMARKS
3	SHELL	PHOSPHOR BRONZE	Sn 1.00 μm MIN. OVER Ni 1.00 μm MIN. PLATING
2	CONTACT	PHOSPHOR BRONZE	Au OVER Ni PLATING CONTACT AREA: Au 0.03 μm MIN. OVER Ni 1.00 μm MIN.
1	HOUSING	LCP	UL94V-0, BLACK

REV.	ECN	BY	DATE	APP.	DESCRIPTION	APPROVAL	DATE	PROJECTION	SERIES No.	TITLE	SCALE	SHEET	REV.
13	Z220271	K.H	Mar./10/'22	H.I	ANGLE	±2°	6 OVER 30 MAX.	±0.3	R6	EVAFLEX® 5-VS	5:1	A3	13
12	Z211485	K.H	Nov./30/'21	H.I	6 MAX.	±0.2	30 OVER 120 MAX.	±0.5					
11	Z201214	H.K	Nov./26/'20	Y.S	GENERAL TOLERANCE.								
10	Z180880	T.T	July/05/'18	Y.S	DWG.	K.Ozeki		DATE	2012/04/16				
9	Z161397	T.T	Nov./08/'16	J.T	CHK.	J.Tateishi							
8	Z161213	H.K	Sept./29/'16	J.T	APP.	T.Harada							
REVISION RECORD					DWG. No.	20535							

ITEMS	SPECIFICATION
RATING VOLTAGE	200V AC/DC (PER CONTACT PIN)
RATING AMPERAGE (FOR CONTACT)	0.3A AC/DC (PER CONTACT PIN) IN CASE OF APPLYING 0.5A PER CONTACT PIN, THE TOTAL CURRENT OF THE WHOLE CONNECTOR SHALL BE 15.0A OR LOWER.
OPERATING TEMPERATURE	233~358K(-40°C~+85°C)
OPERATING HUMIDITY	85% MAX.(NON-CONDENSING)
CONTACT RESISTANCE (FOR SIGNAL CONTACT)	INITIAL : 60mohm MAX. / AFTER TEST : \triangle 40mohm MAX.
INSULATION RESISTANCE	INITIAL : 100Mohm MIN. / AFTER TEST : 100Mohm MIN.
DIELECTRIC WITHSTANDING VOLTAGE	AC250V 1min
DURABILITY	30 CYCLES
MATING FORCE (INITIAL / AFTER TEST)	10P : 6.0N MAX. 15P : 9.0N MAX. 20P : 12.0N MAX. 24P : 14.4N MAX. 30P : 18.0N MAX. 40P : 24.0N MAX.
UNMATING FORCE (INITIAL / AFTER TEST)	10P : 1.0N MIN. 15P : 1.5N MIN. 20P : 2.0N MIN. 24P : 2.4N MIN. 30P : 3.0N MIN. 40P : 4.0N MIN.
COPLANARITY	0.10 MAX.
PRODUCT SPECIFICATION	PRS-1670
TEST REPORT	TR-12108
PACKING STANDARD	300-997
INSTRUCTION MANUAL	HIM-12003
APPEARANCE CRITERIA No.	QLS-A***

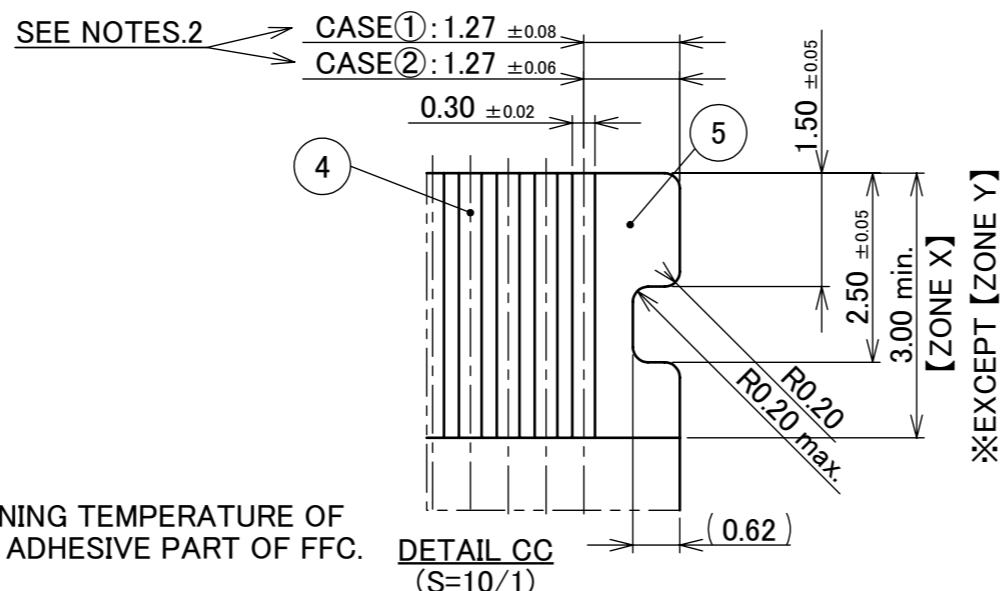
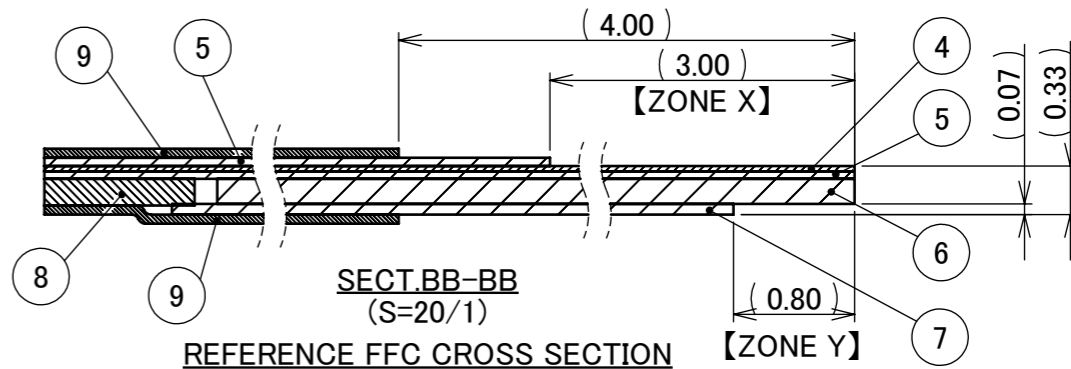
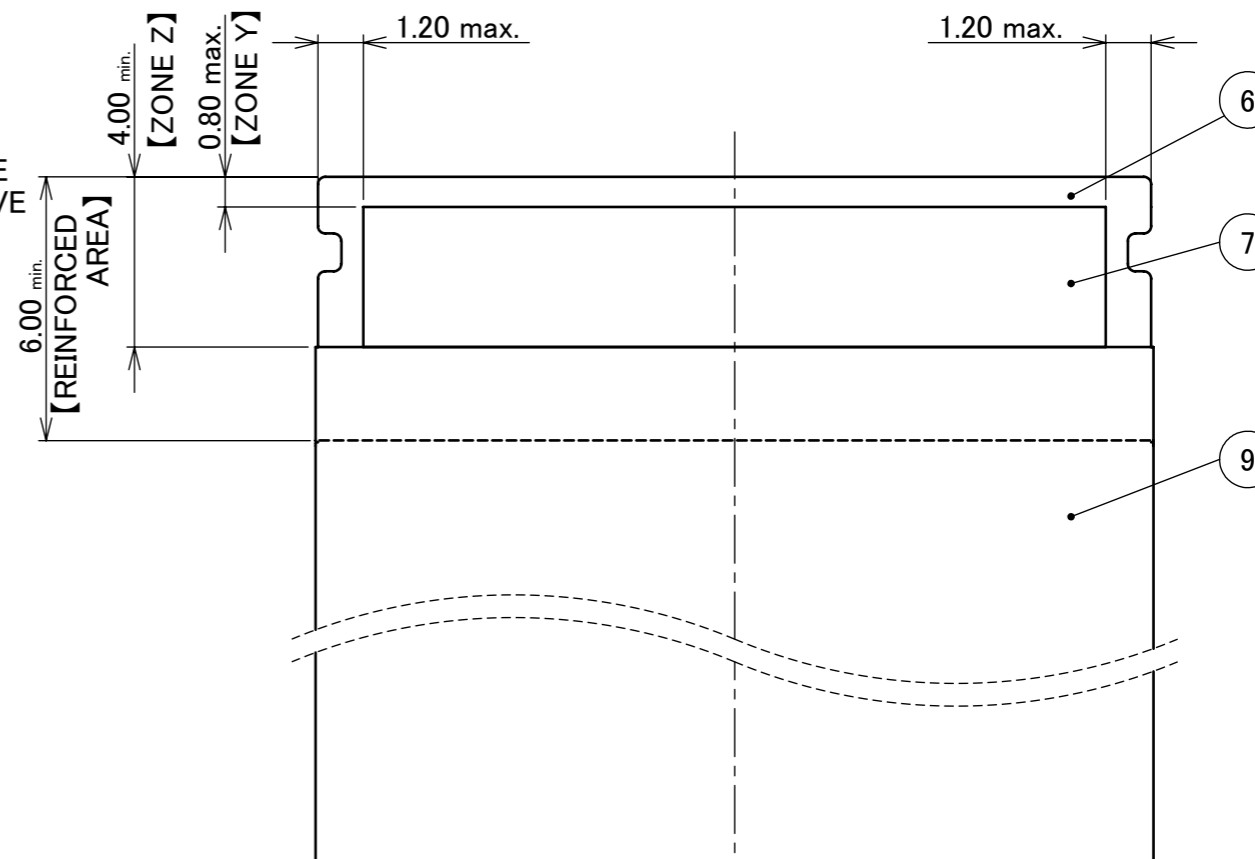
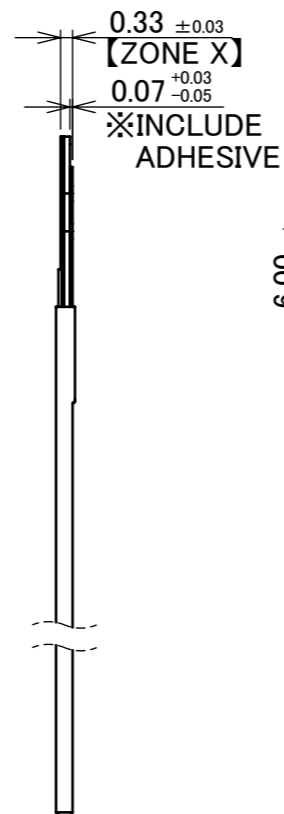
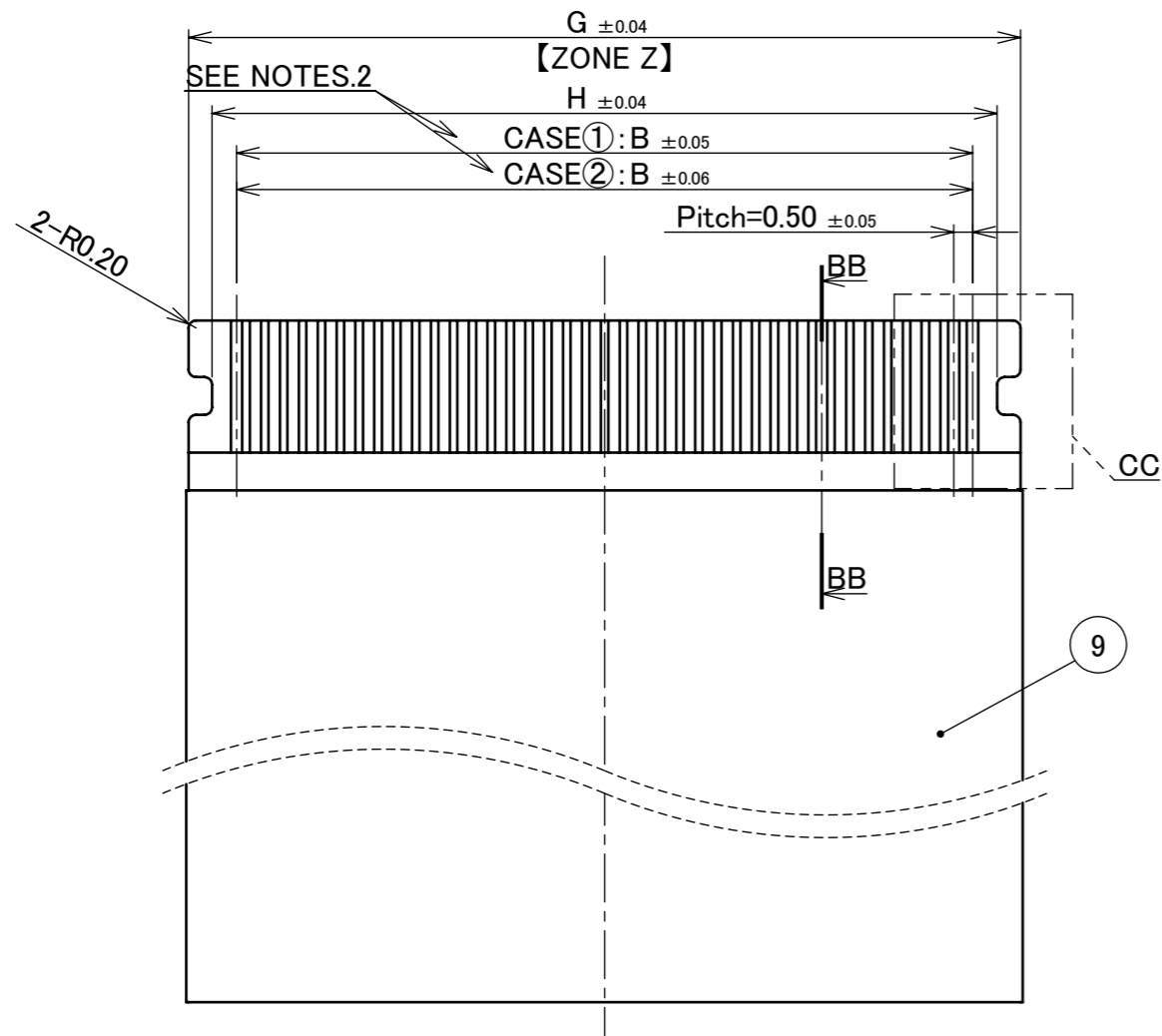
ANGLE	$\pm 2^\circ$	6 OVER 30 MAX.	± 0.3	PROJECTION 	SERIES No. R6	CUSTOMER COPY		
	6 MAX.	± 0.2	30 OVER 120 MAX.				± 0.5	
GENERAL TOLERANCE.				TITLE EVAFLEX® 5-VS	SCALE	I-PEX		
DWG.	DATE							
CHK.								
APP.								
				DWG. No.	20535	SIZE A3	SHEET 2/5	REV. 13

Recommended P/N

20535-0**E-02

PART No.	POS.	B	G	H
20535-010E-02	10P	4.50	7.04	5.80
20535-015E-02	15P	7.00	9.54	8.30
20535-020E-02	20P	9.50	12.04	10.80
20535-024E-02	24P	11.50	14.04	12.80
20535-030E-02	30P	14.50	17.04	15.80
20535-040E-02	40P	19.50	22.04	20.80

RECOMMENDED FFC DIMENSION



NOTES

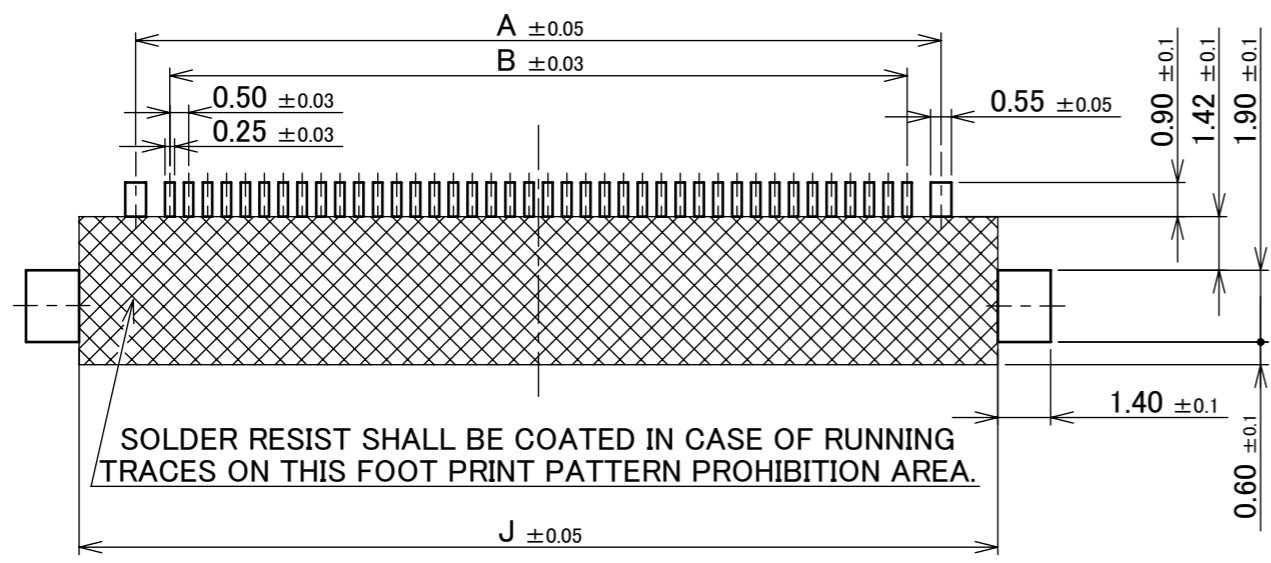
1. DIFFERENTIAL IMPEDANCE : 100 Ω
2. MANUFACTURE CASE ① or CASE ②
3. SELECT A MATERIAL WITH A SOFTENING TEMPERATURE OF 85°C OR HIGHER FOR THE PATTERN ADHESIVE PART OF FFC.

NO.	DISCRIPTION	MATERIAL	FINISH , REMARKS
9	SHIELD TAPE	METALIC FILM	-
8	INTERLAYER	ARBITRARY	-
7	GROUND PLATE	METARIC FILM	POLISH or HALF POLISH Sn PLATING
6	REINFORCED TAPE	ARBITRARY	-
5	INSULATION FILM	ARBITRARY	-
4	CONDUCTOR	COPPER ALLOY	CONTACT AREA: Au 0.05 μ m MIN. OVER Ni 0.5 μ m MIN.

ANGLE	±2°	6 OVER 30 MAX.	±0.3	PROJECTION ⊕	SERIES No. R6	CUSTOMER COPY	
	6 MAX.	±0.2	30 OVER 120 MAX.				
GENERAL TOLERANCE.				TITLE EVAFLEX® 5-VS		SCALE 5:1	I-PEX
DWG.	DATE			DWG. No. 20535		UNIT mm	
CHK.						SHEET 3/5	

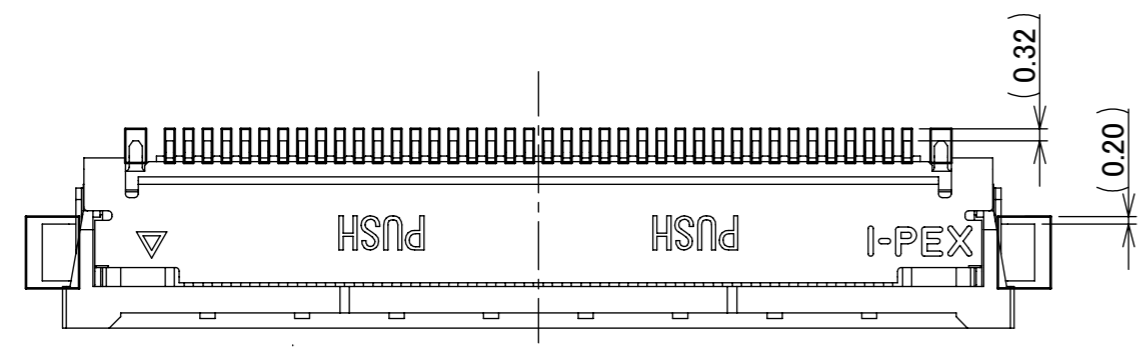
Recommended P/N 20535-0**E-02

PART No.	POS.	A	B	J
20535-010E-02	10P	6.30	4.50	9.30
20535-015E-02	15P	8.80	7.00	11.80
20535-020E-02	20P	11.30	9.50	14.30
20535-024E-02	24P	13.30	11.50	16.30
20535-030E-02	30P	16.30	14.50	19.30
20535-040E-02	40P	21.30	19.50	24.30

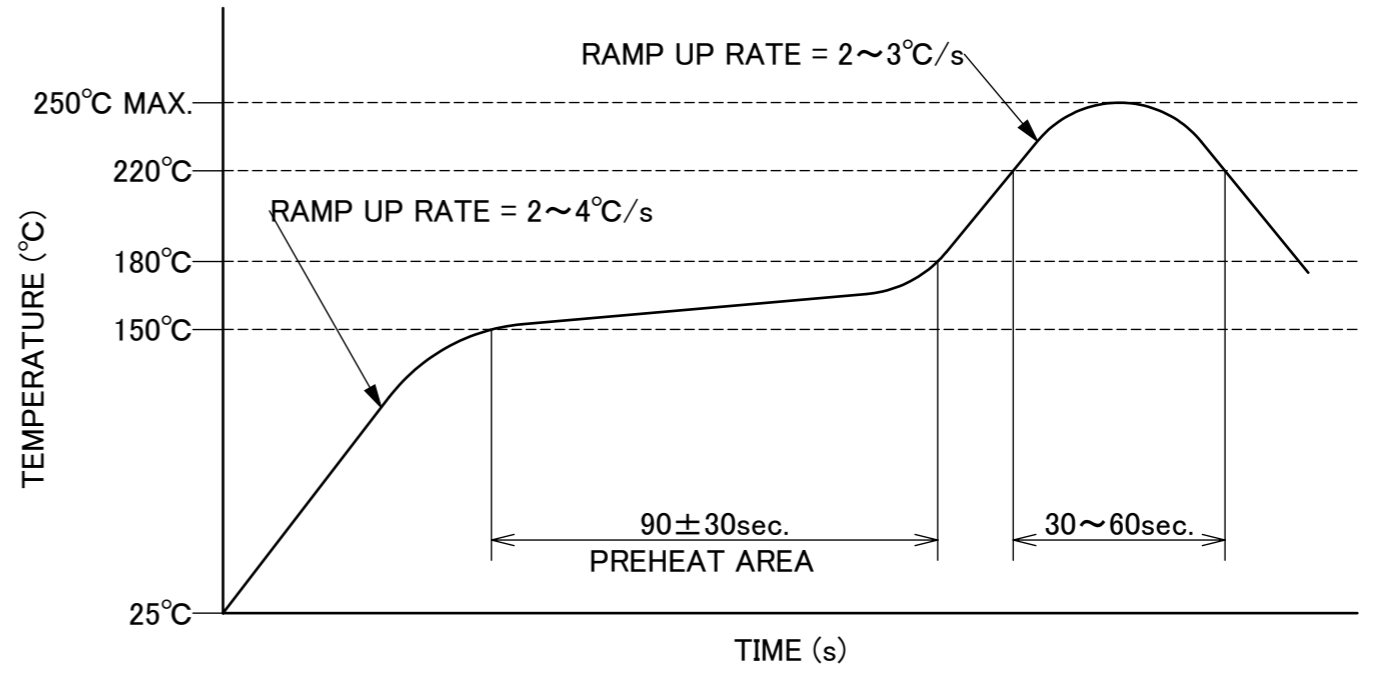


SOLDER RESIST SHALL BE COATED IN CASE OF RUNNING TRACES ON THIS FOOT PRINT PATTERN PROHIBITION AREA.

RECOMMENDED PCB & METALMASK LAYOUT
METALMASK THICKNESS: t=0.12



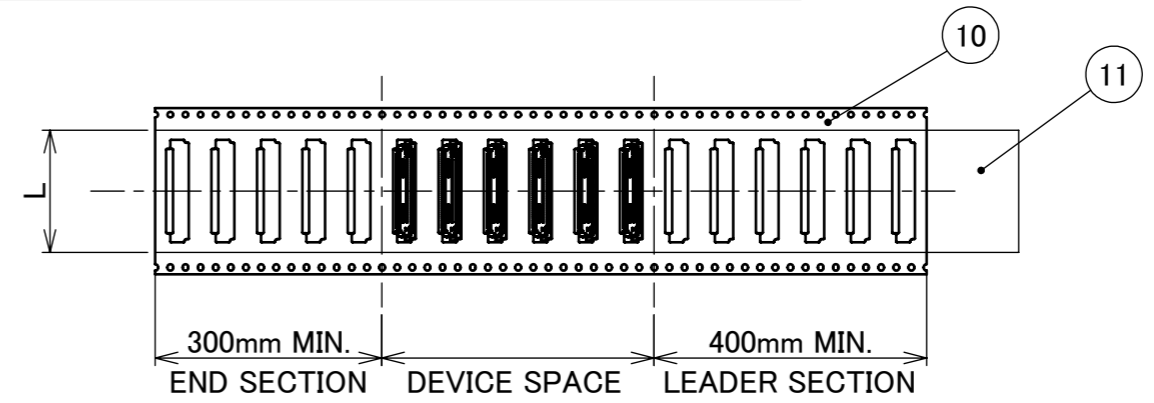
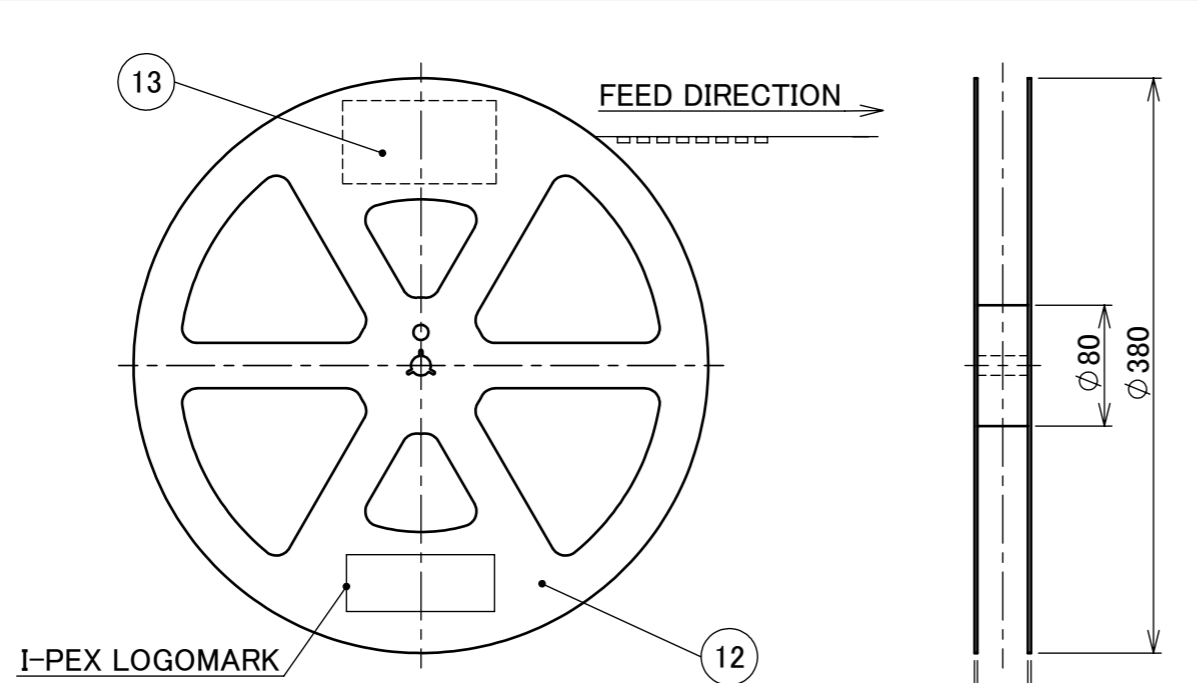
CONNECTOR ON RECOMMENDED FOOTPRINT PATTERN



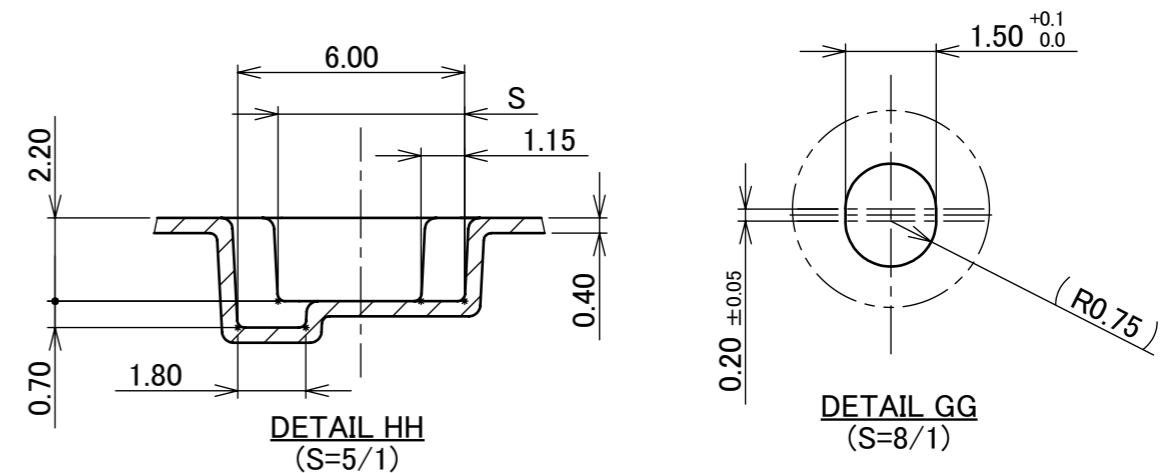
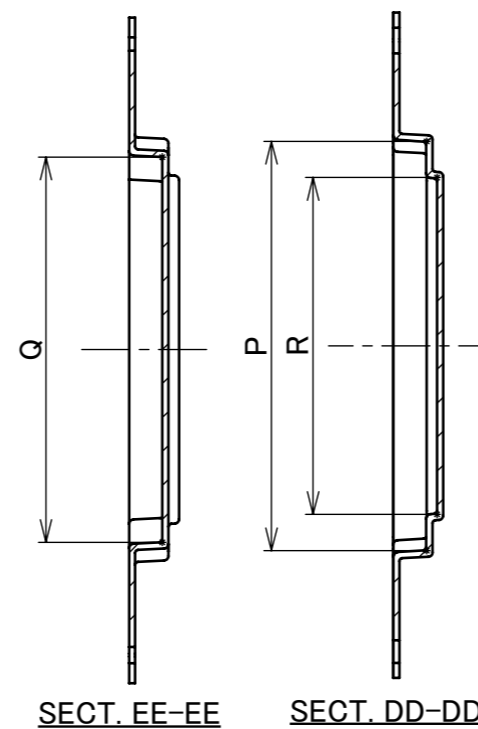
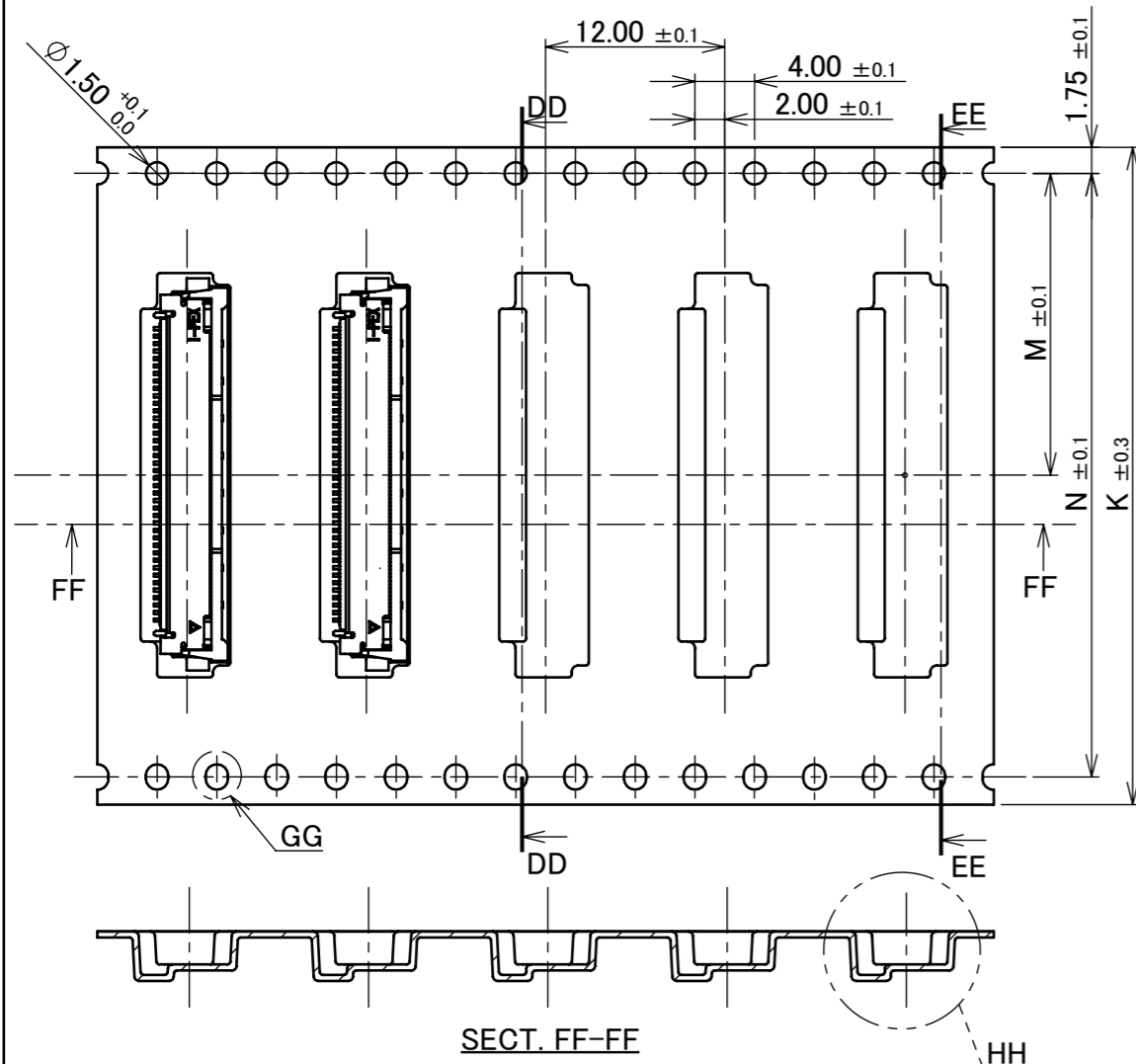
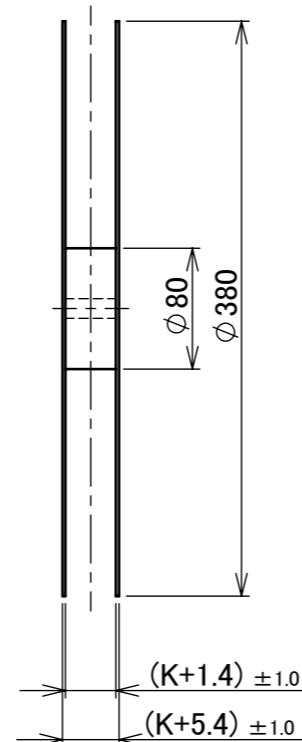
REFLOW TEMPERATURE PROFILE
SENJU METAL INDUSTRY CO., LTD. : M705-SHF(Sn96.5 Ag3.0 Cu0.5)

ANGLE	±2°	6 OVER 30 MAX.	±0.3	PROJECTION ⊕	SERIES No. R6	CUSTOMER COPY					
6 MAX.	±0.2	30 OVER 120 MAX.	±0.5								
GENERAL TOLERANCE.				TITLE EVAFLEX® 5-VS		SCALE 5:1	I-PEX				
DWG.	DATE			DWG. No. 20535		UNIT mm					
CHK.						SIZE A3				SHEET 4/5	REV. 13
APP.											

PART NO.	K	L	M	N	P	Q	R	S	QTY. PER EMBOSS REEL (PIECES / REEL)	QTY. PER PACKING CARTON (REELS / CARTON)	
20535-010E-02	24.00	17.30	11.50	-	12.05	10.42	7.35	4.74	2300 PIECES / REEL	5REELS / CARTON = 11500 PIECES / CARTON	
20535-015E-02		19.30			14.55	12.92	9.85				
20535-020E-02		20.30			17.05	15.47	12.25				
20535-024E-02	32.00	25.50	14.20	28.40	19.05	17.47	14.25	4.94			4REELS / CARTON = 9200 PIECES / CARTON
20535-030E-02					22.05	20.47	17.25				
20535-040E-02	44.00	32.30	20.20	40.40	27.05	25.47	22.25		3REELS / CARTON = 6900 PIECES / CARTON		



- NOTES.
1. TAPING SPECIFICATION FOLLOWS JIS C 0806 (IEC 60286-3).
 2. MAKE EMPTY SECTION OF LEADER AND END ON EACH END OF THE TAPE.
 3. TOP TAPE SHALL NOT STICK OUT FROM EMBOSS TAPE.
 4. TOP TAPE SHALL NOT COVER FEED HOLE.



NO.	DISCRIPTION	MATERIAL	FINISH , REMARKS
13	PACKING LABEL	-	-
12	REEL	PS	BLACK
11	TOP TAPE	PET t=0.061 TRANSPARENCY	ANTI-STATIC TYPE
10	EMBOSS TAPE	PS t=0.40 TRANSPARENCY	ANTI-STATIC TYPE

ANGLE	±2°	6 OVER 30 MAX.	±0.3	PROJECTION	SERIES No.	CUSTOMER COPY			
6 MAX.	±0.2	30 OVER 120 MAX.	±0.5		R6				
GENERAL TOLERANCE.				TITLE	EVAFLEX® 5-VS				
DWG.	DATE			DWG. No.		20535	SCALE	2:1	
CHK.							UNIT	mm	
APP.							SIZE	SHEET	REV.
							A3	5/5	13