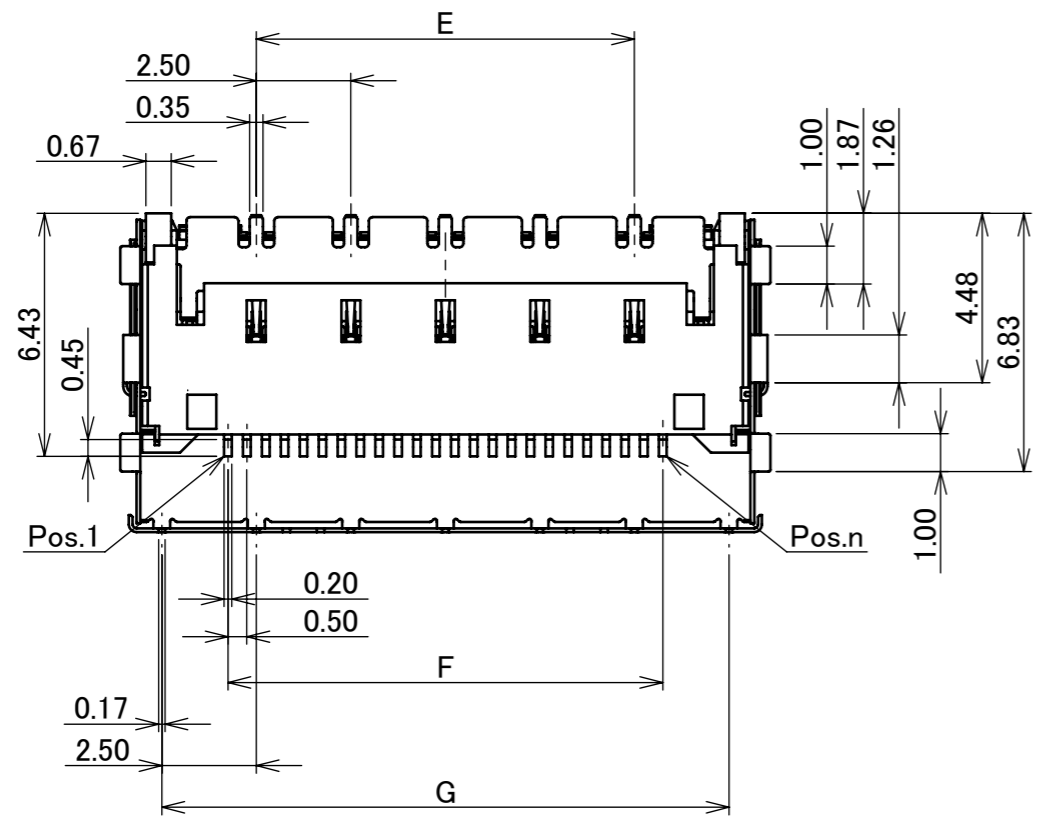
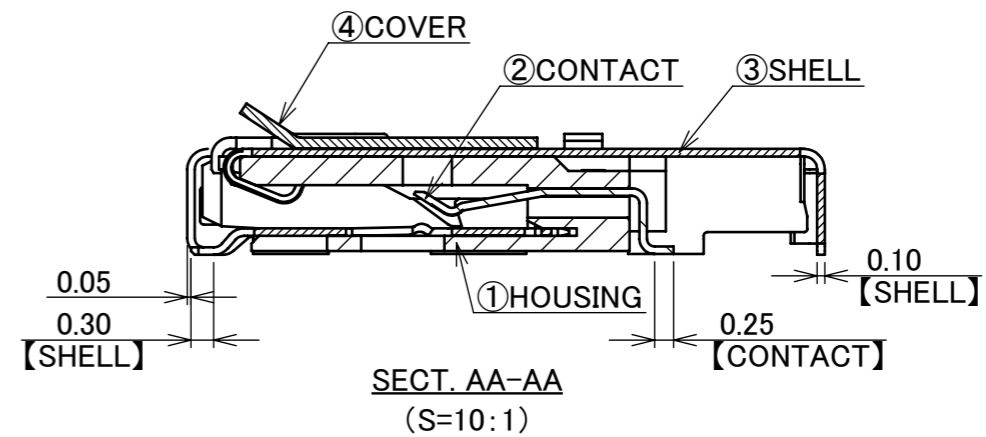
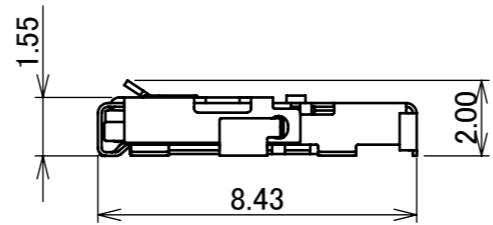
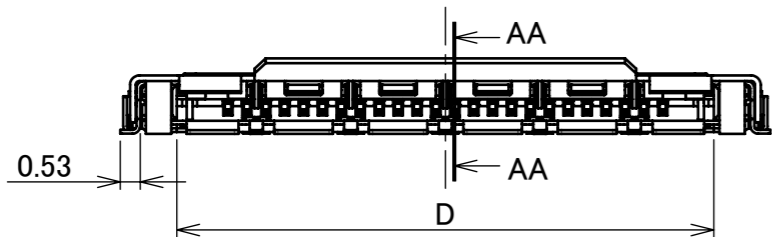
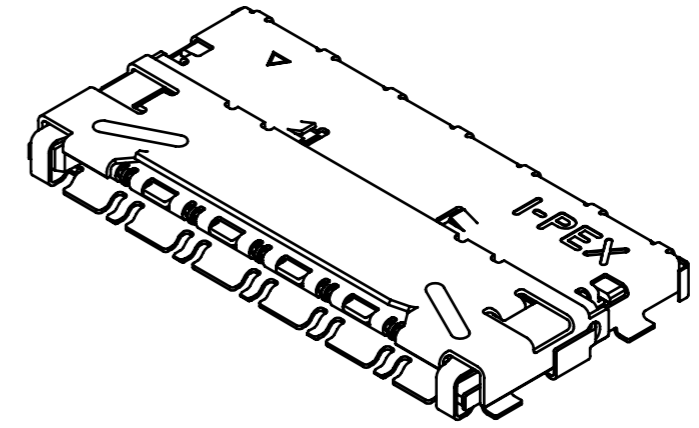
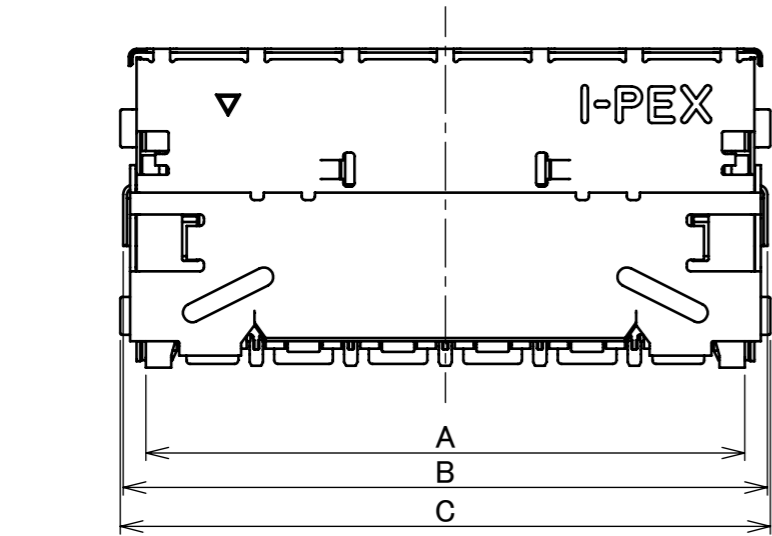
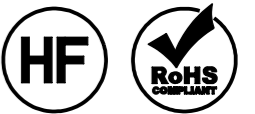


Recommended P/N 20952-0**E-02

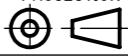
PART NO.	Pos.	A	B	C	D	E	F	G
20952-024E-02	24	15.84	17.04	17.20	14.20	10.00	11.50	15.00



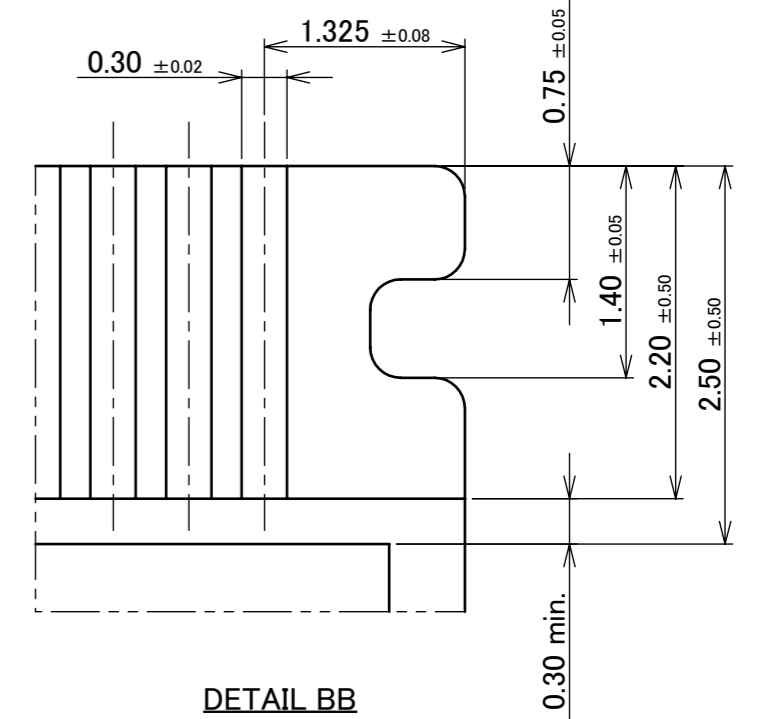
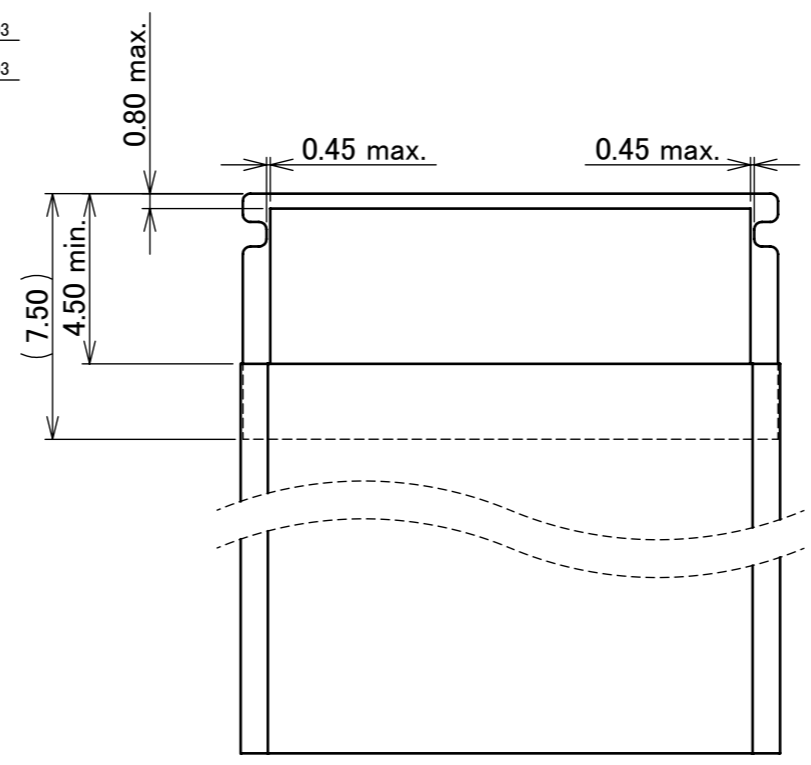
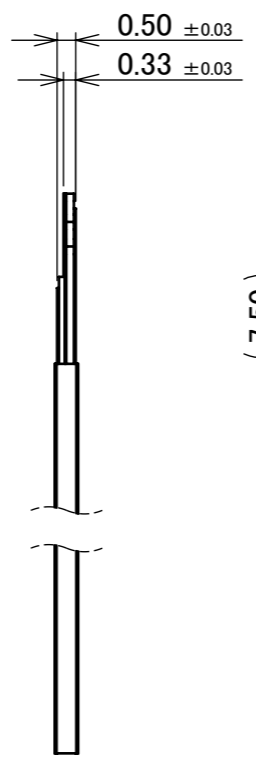
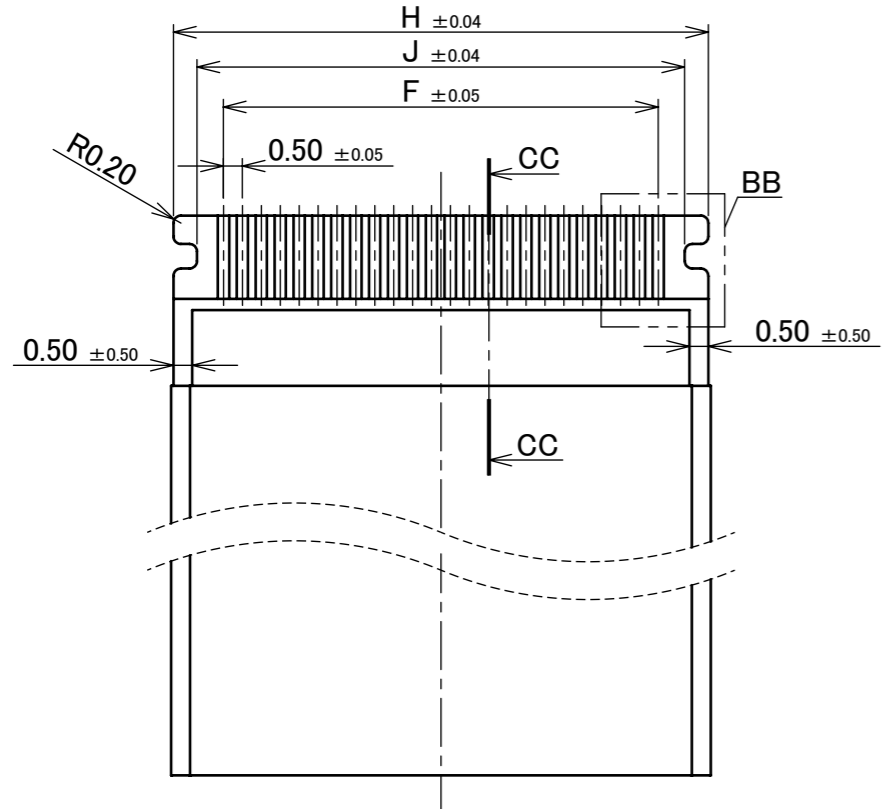
4	COVER	SUS	
3	SHELL	CORSON ALLOY	ALL OVER Ni 1.00 μ m MIN. SOLDERING AREA: Au 0.02 μ m MIN.
2	CONTACT	CORSON ALLOY	CONTACT AREA: Au 0.03 μ m MIN. OVER Ni 1.00 μ m MIN. SOLDERING AREA: Au 0.03 μ m MIN. OVER Ni 1.00 μ m MIN.
1	HOUSING	LCP	UL94V-0, BLACK
NO.	DISCRIPTION	MATERIAL	FINISH , REMARKS

					ANGLE	±2°	6 OVER 30 MAX.	±0.3	PROJECTION ⊕	SERIES No. R3	CUSTOMER COPY			
						6 MAX.	±0.2	30 OVER 120 MAX.				±0.5		
					GENERAL TOLERANCE.				TITLE	SCALE	I-PEX			
					DWG.	H.Kaneko			DATE	2020/01/20		5:1		
					CHK.	M.Muro						UNIT		
					APP.	H.Ikari			DWG. No.	20952		mm		
REVISION RECORD									SIZE	A3	SHEET	1/6	REV.	1

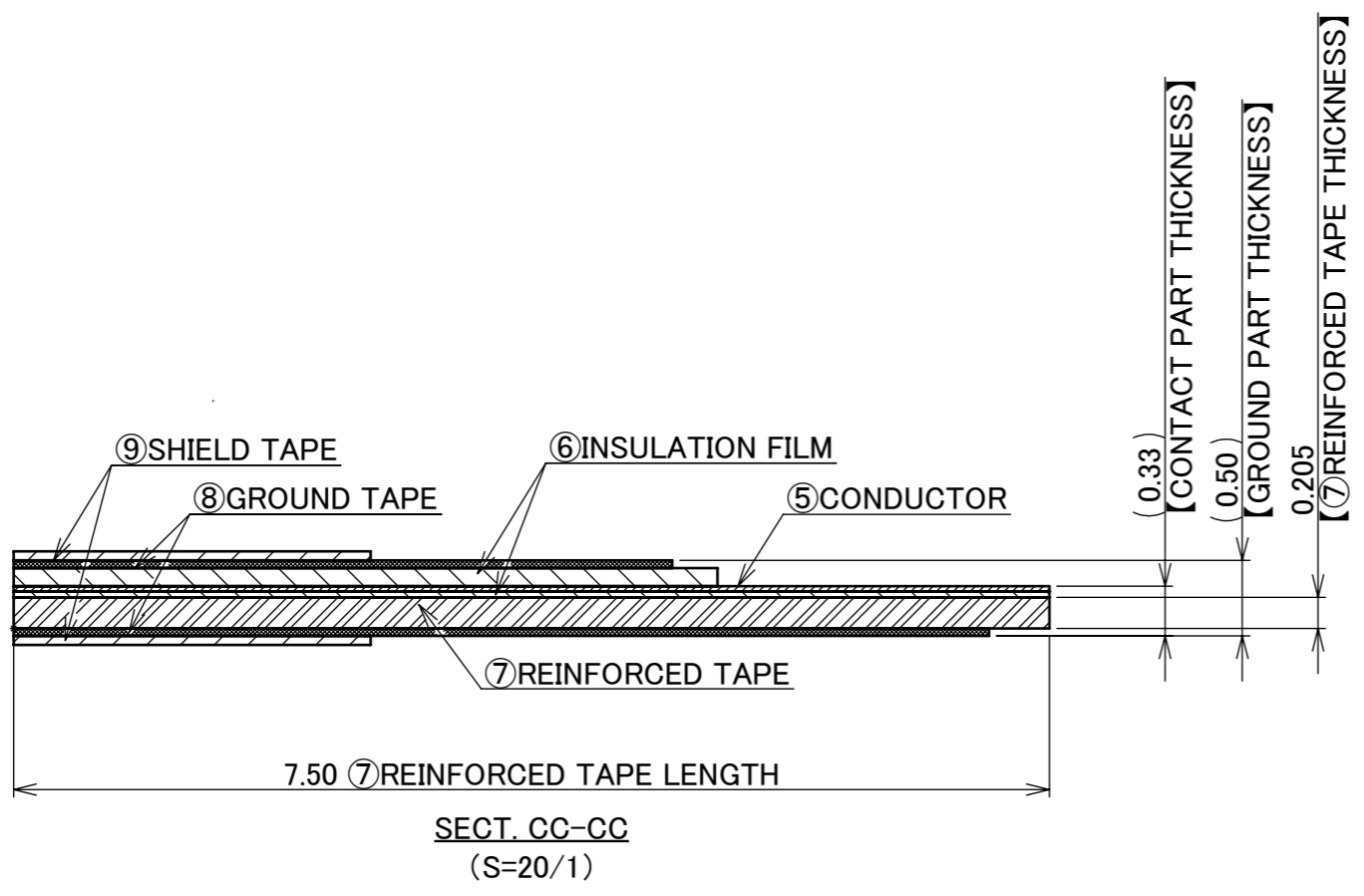
ITEMS	SPECIFICATION
RATING VOLTAGE	50V AC/DC (PER CONTACT)
RATING AMPERAGE (FOR SIGNAL CONTACT)	0.30A AC/DC
OPERATING TEMPERATURE	233~358K (-40°C~+85°C)
OPERATING HUMIDITY	85% RH. MAX. (NON-CONDENSING)
CONTACT RESISTANCE (FOR SIGNAL CONTACT)	INITIAL : 60mohm MAX. / AFTER TEST : \triangle 40mohm MAX.
INSULATION RESISTANCE	INITIAL : 500Mohm MIN. / AFTER TEST : 500Mohm MIN.
DIELECTRIC WITHSTANDING VOLTAGE	AC 250V 1min
DURABILITY	30 CYCLES
MATING FORCE (INITIAL / AFTER TEST)	24P : 22.00 N MAX.
UNMATING FORCE (INITIAL / AFTER TEST)	24P : 2.30 N MIN.
FFC/FPC RETENTION FORCE (INITIAL / AFTER TEST)	24P : 8.50 N MIN.
COPLANARITY	0.10 MAX.
PRODUCT SPECIFICATION	PRS-2645
TEST REPORT	TR-20006
PACKING STANDARD	PST-19012
INSTRUCTION MANUAL	HIM-19004
APPEARANCE CRITERIA No.	QLS-A***

ANGLE	$\pm 2^\circ$	6 OVER 30 MAX.	± 0.3	PROJECTION 	SERIES No. R3	CUSTOMER COPY
6 MAX.	± 0.2	30 OVER 120 MAX.	± 0.5			
GENERAL TOLERANCE.				TITLE EVAFLEX [®] 5-HD	SCALE 5:1	UNIT mm
DWG.	DATE					
CHK.						
APP.						
				DWG. No.	20952	SIZE A3
				SHEET	2/6	REV. 1

PART NO.	Pos.	F	H	J
20952-024E-02	24	11.50	14.15	12.90



DETAIL BB
(S=20/1)



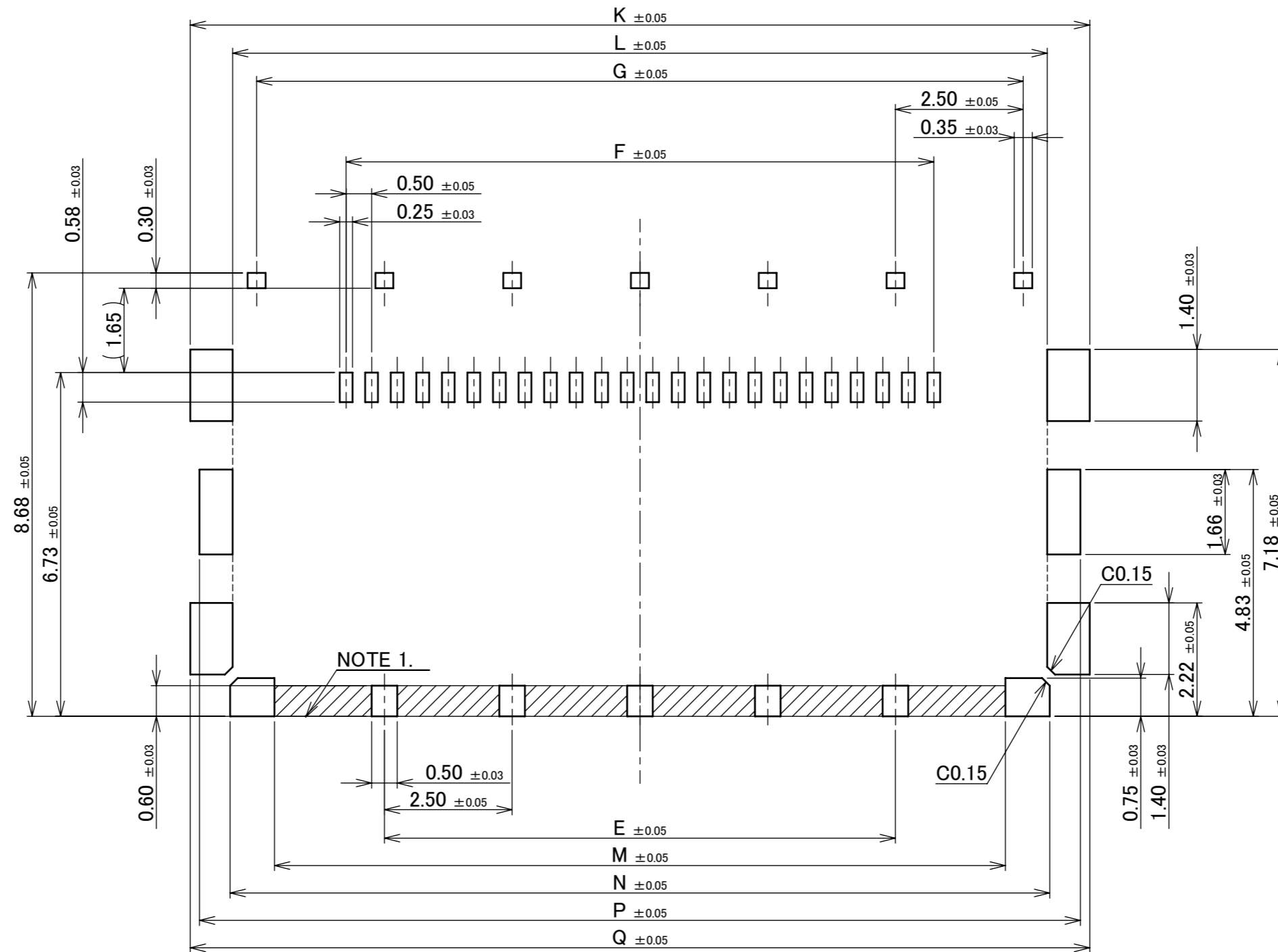
NOTES.

1. DIFFERENTIAL IMPEDANCE : $90 \pm 10 \Omega$

NO.	DISCRIPTION	MATERIAL	FINISH , REMARKS
9	SHIELD TAPE	METALLIC FILM	
8	GROUND TAPE	METALLIC FILM	
7	REINFORCED TAPE	ARBITRARY	
6	INSULATION FILM	ARBITRARY	
5	CONDUCTOR	COPPER ALLOY	

ANGLE	$\pm 2^\circ$	6 OVER 30 MAX.	± 0.3	PROJECTION 	SERIES No. R3	CUSTOMER COPY
6 MAX.	± 0.2	30 OVER 120 MAX.	± 0.5			
GENERAL TOLERANCE.				TITLE	SCALE 5:1 UNIT mm SIZE A3	I-PEX
DWG.	DATE		EVAFLEX® 5-HD			
CHK.						
APP.			DWG. No.	20952		
				SHEET	3/6	REV. 1

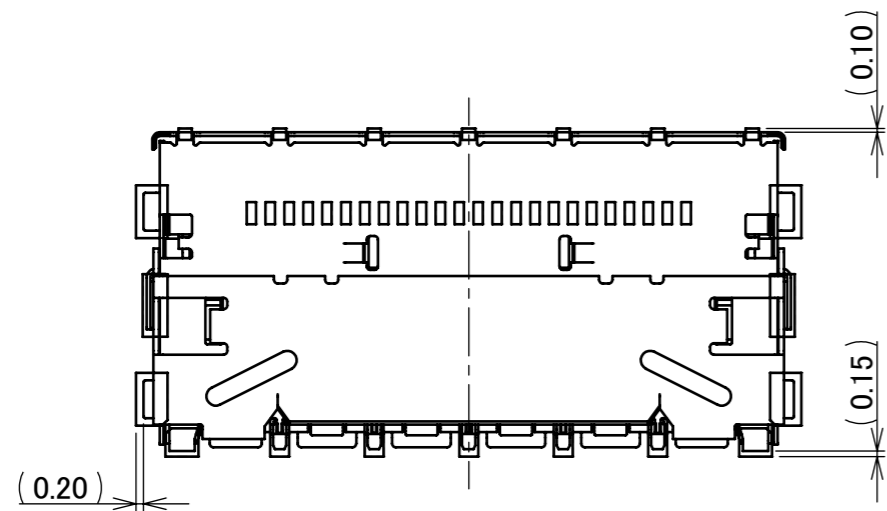
PART NO.	Pos.	E	F	G	K	L	M	N	P	Q
20952-024E-02	24	10.00	11.50	15.00	17.60	15.94	14.30	16.04	17.24	17.60



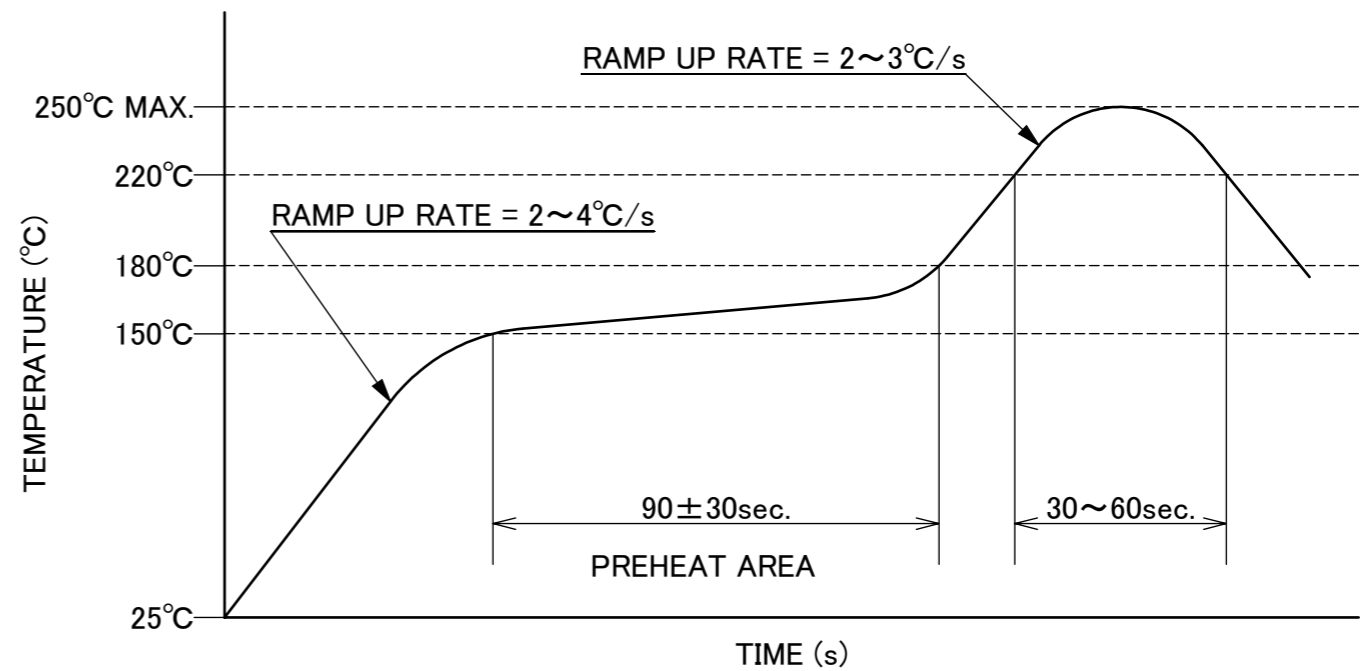
RECOMMENDED PCB & METALMASK LAYOUT
THICKNESS t=0.12

NOTES.
 2. HATCHING AREA:
 SOLDER RESIST SHALL BE COATED IN CASE OF RUNNING TRACES
 ON THIS FOOTPRINT PATTERN PROHIBITION AREA.

ANGLE	±2°	6 OVER 30 MAX.	±0.3	PROJECTION 	SERIES No. R3	CUSTOMER COPY
	6 MAX.	±0.2	30 OVER 120 MAX.			
GENERAL TOLERANCE.				TITLE		SCALE
DWG.	DATE			EVAFLEX® 5-HD		10:1
CHK.						UNIT
APP.				DWG. No. 20952		mm
						SIZE
						A3
						SHEET 4/6
						REV. 1



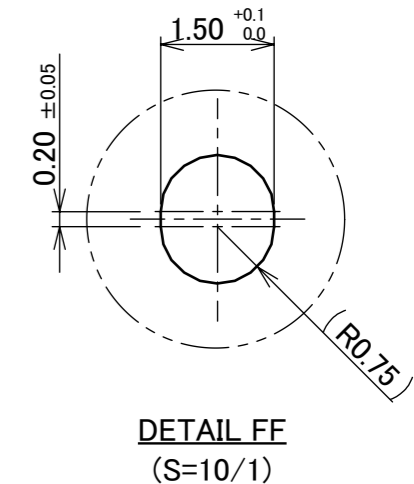
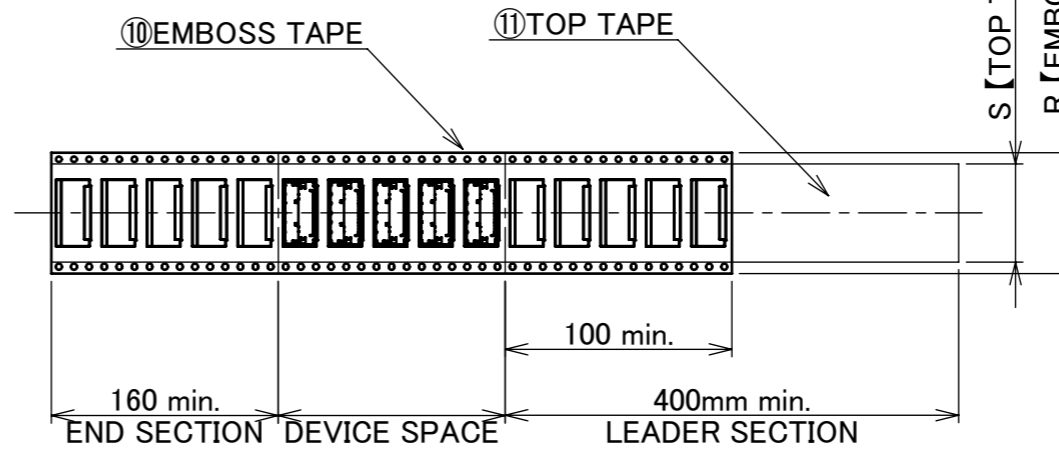
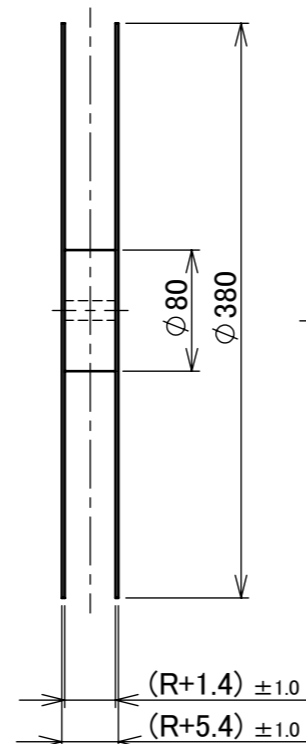
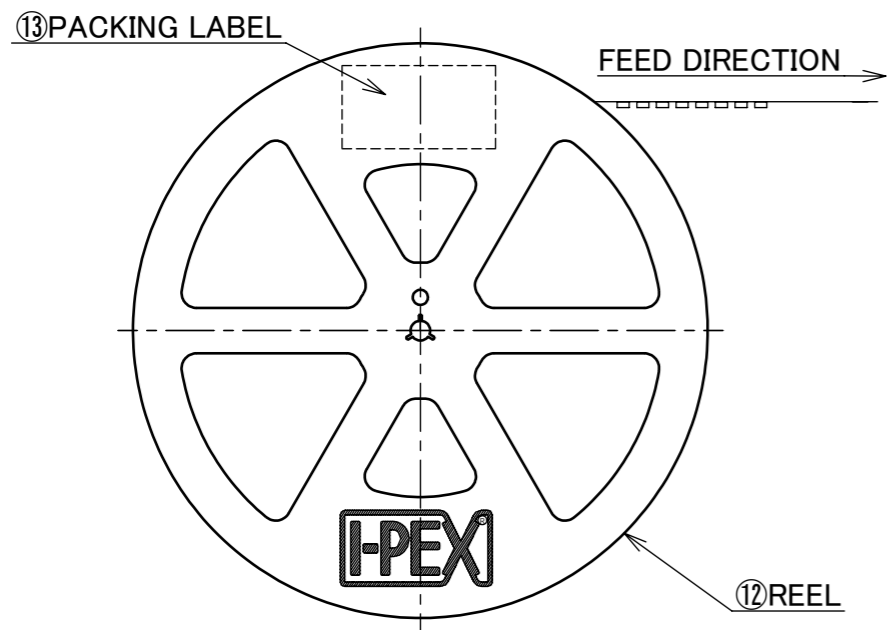
CONNECTOR ON RECOMMENDED FOOTPRINT PATTERN LAYOUT



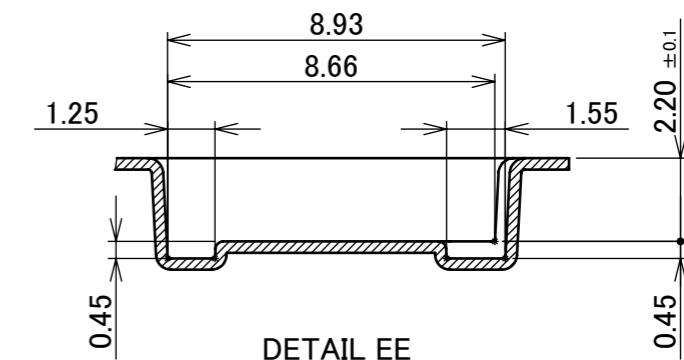
REFLOW TEMPERATURE PROFILE
SENJU METAL INDUSTRY CO., LTD. : M705-SHF(Sn96.5 Ag3.0 Cu0.5)

ANGLE	±2°	6 OVER 30 MAX.	±0.3	PROJECTION ⊕	SERIES No. R3	CUSTOMER COPY	
6 MAX.	±0.2	30 OVER 120 MAX.	±0.5				
GENERAL TOLERANCE.				TITLE		SCALE	I-PEX
DWG.	DATE			EVAFLEX® 5-HD		5:1	
CHK.						UNIT	
APP.				DWG. No.		mm	
				20952		SIZE	SHEET 5/6 REV. 1
						A3	

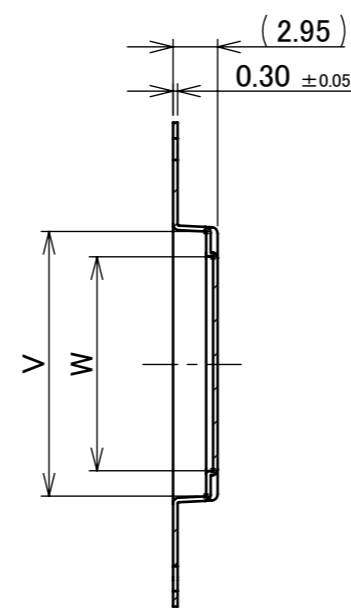
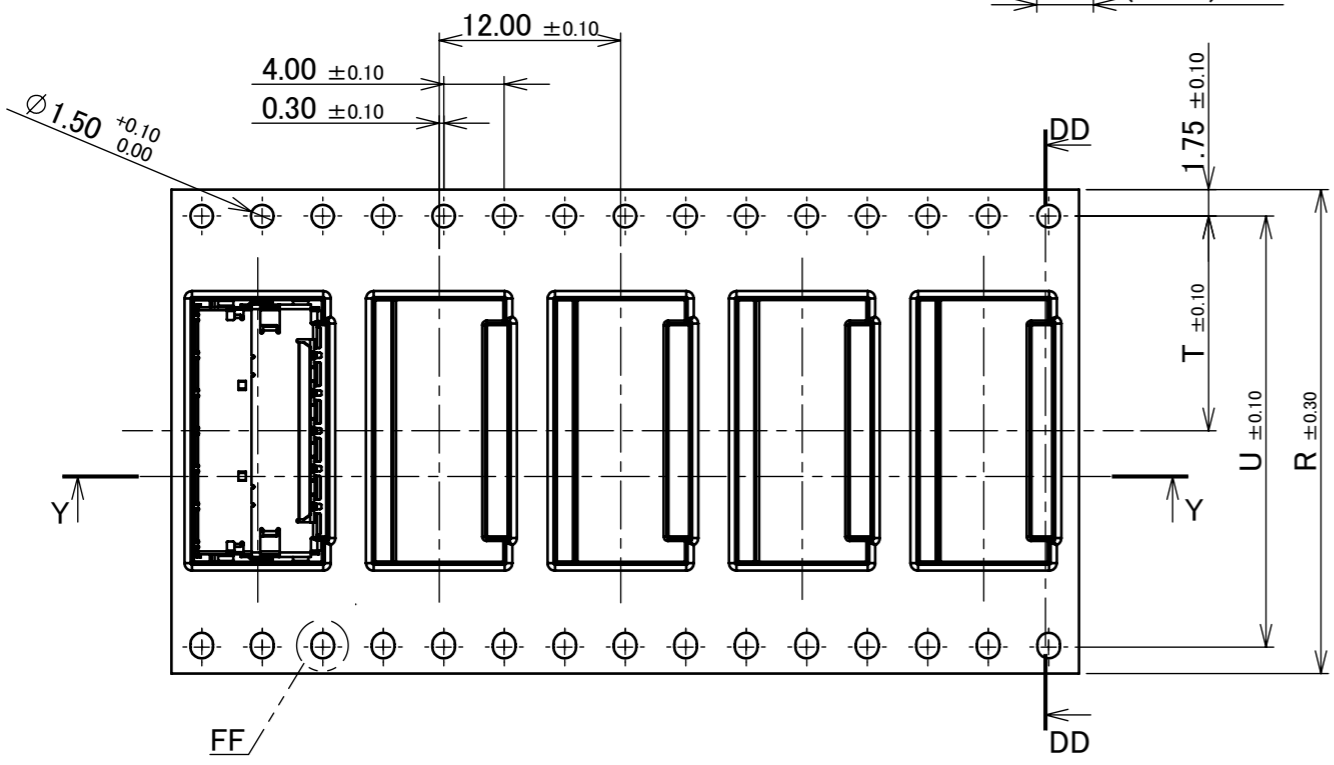
PART NO.	R	S	T	U	V	W	QTY. PER EMBOSS REEL (PIECES / REEL)	QTY. PER PACKING CARTON (REELS / CARTON)
20952-024E-02	32.00	26.00	14.20	28.40	17.50	14.15	2500 PIECES / REEL	4REELS / CARTON = 10000 PIECES / CARTON



EMBOSS TAPE
(S=1/2)



DETAIL EE

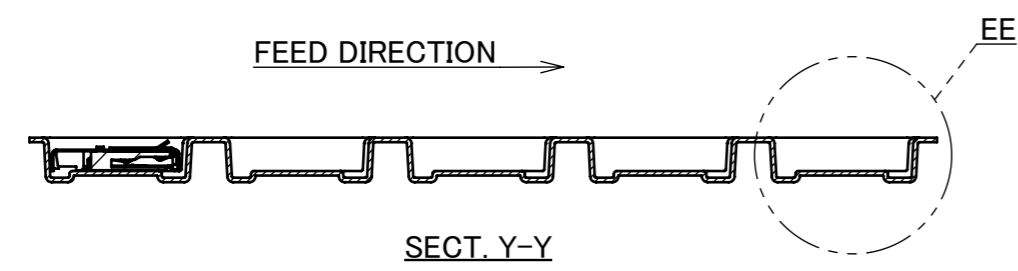


SECT. DD-DD

NOTES.

- TAPING SPECIFICATION FOLLOWS JIS C 0806 (IEC 60286-3).
- MAKE EMPTY SECTION OF LEADER AND END ON EACH END OF THE TAPE.
- TOP TAPE SHALL NOT STICK OUT FROM EMBOSS TAPE.
- TOP TAPE SHALL NOT COVER FEED HOLE.

NO.	DISCRIPTION	MATERIAL	FINISH , REMARKS
13	PACKING LABEL	-	-
12	REEL	PS	ANTI-STATIC TYPE BLACK
11	TOP TAPE	PET t=0.062 TRANSPARENCY	ANTI-STATIC TYPE
10	EMBOSS TAPE	PS t=0.4 TRANSPARENCY	ANTI-STATIC TYPE



SECT. Y-Y

ANGLE	$\pm 2^\circ$	6 OVER 30 MAX.	± 0.3	PROJECTION 	SERIES No. R3	CUSTOMER COPY
	6 MAX.	± 0.2	30 OVER 120 MAX.			
GENERAL TOLERANCE.				TITLE	SCALE 5:1 UNIT mm SIZE A3	SHEET 6/6 REV. 1
DWG.	DATE	EVAFLEX® 5-HD				
CHK.						
APP.		DWG. No.	20952			