

Recommended P/N

20952-0\*\*E-02

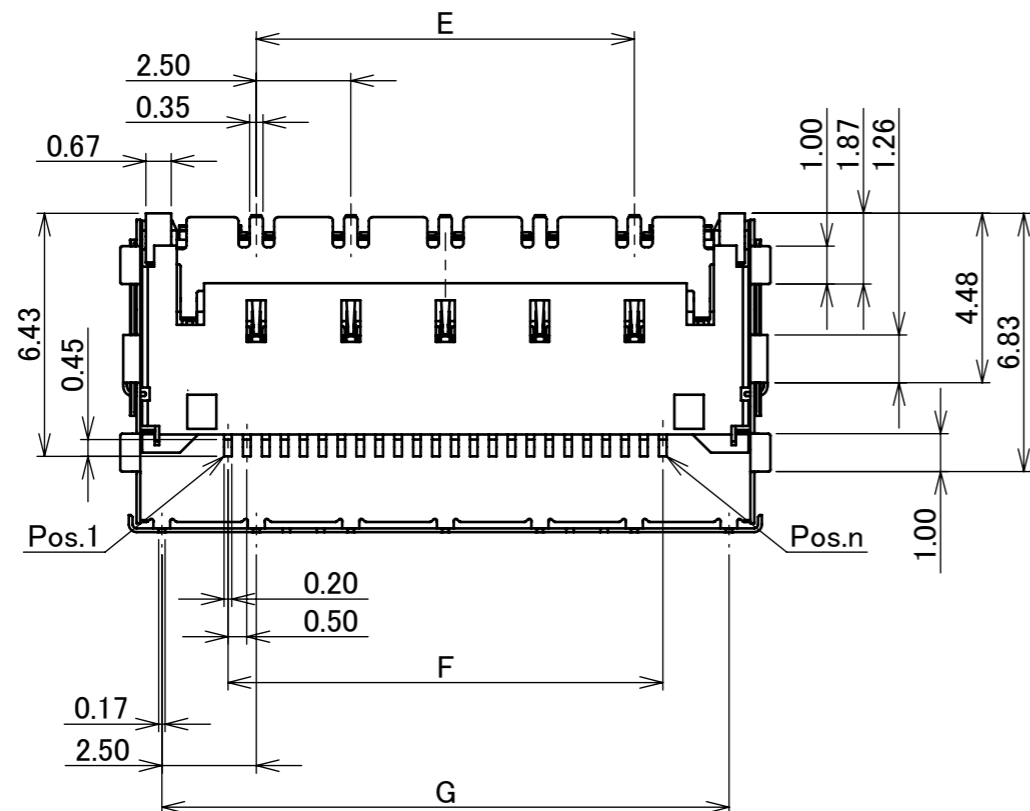
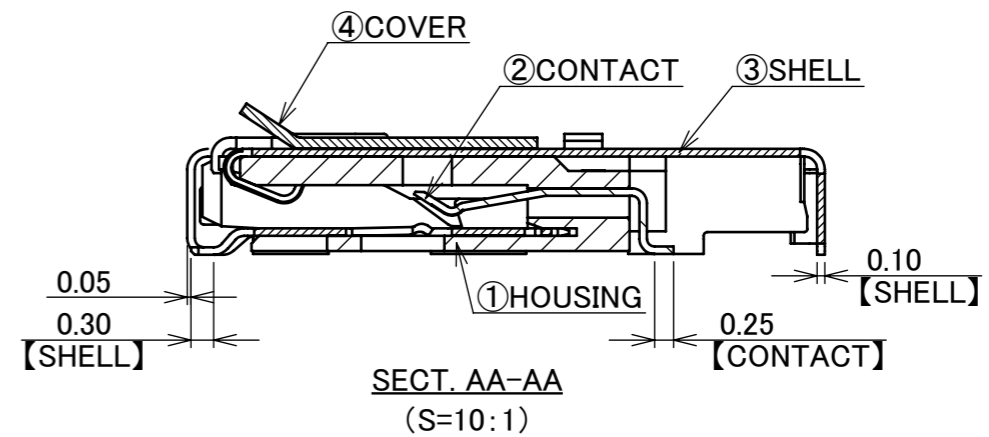
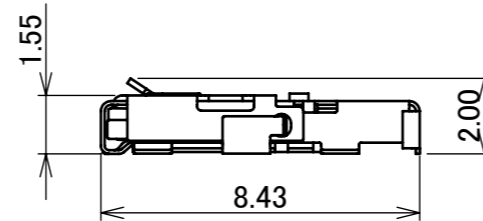
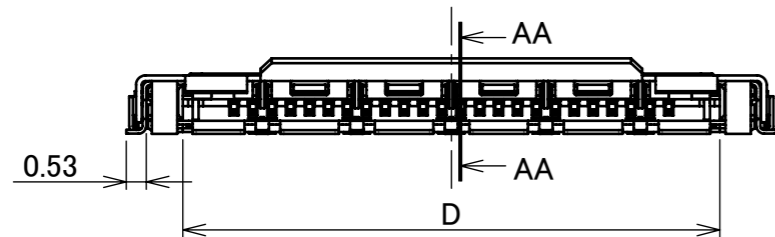
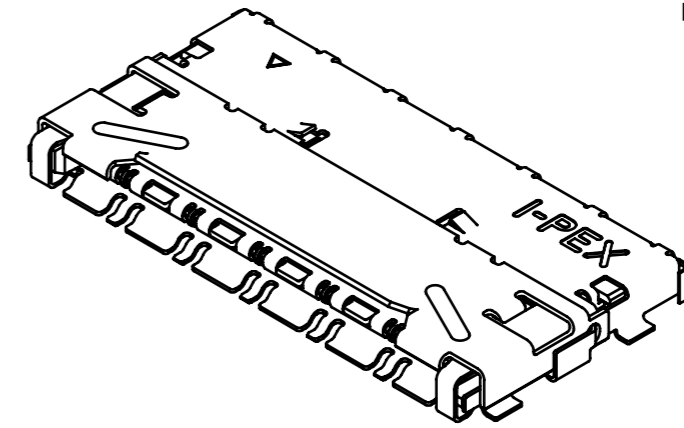
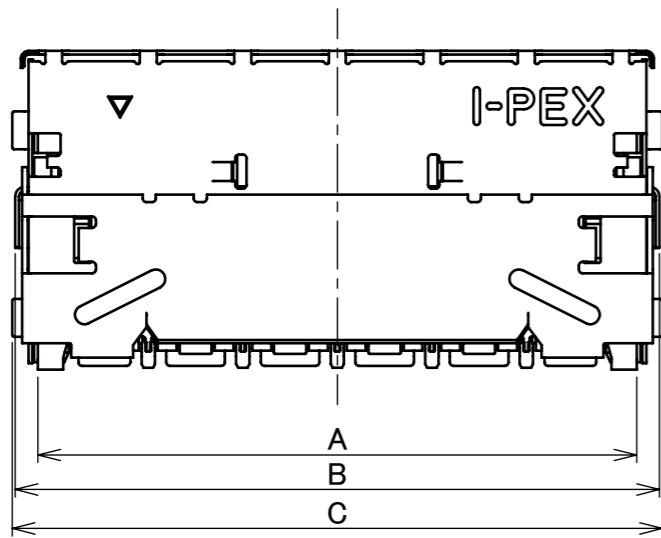
PART NO.	Pos.	A	B	C	D	E	F	G
20952-024E-02	24	15.84	17.04	17.20	14.20	10.00	11.50	15.00



Halogen Free



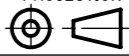
RoHS Compliant



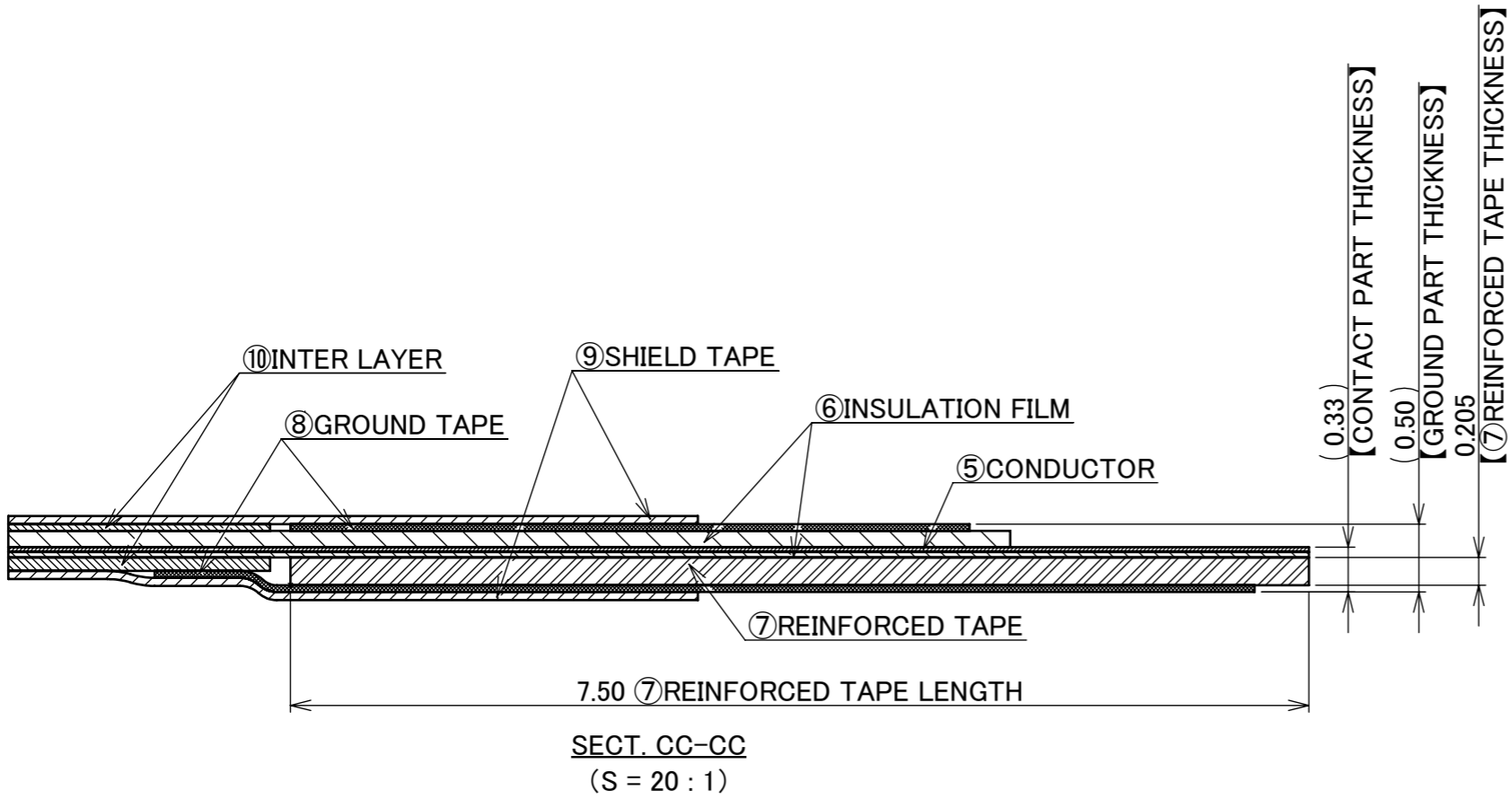
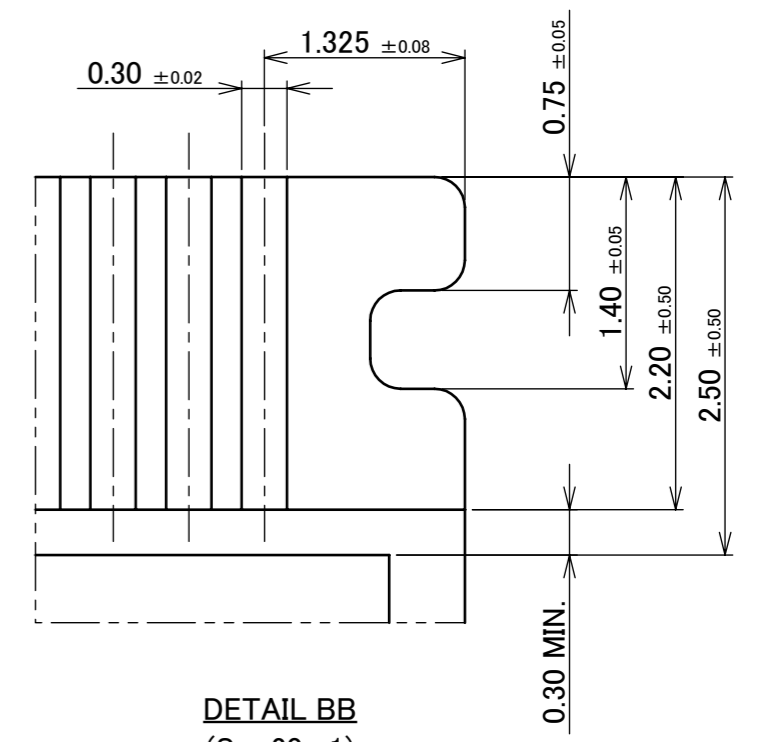
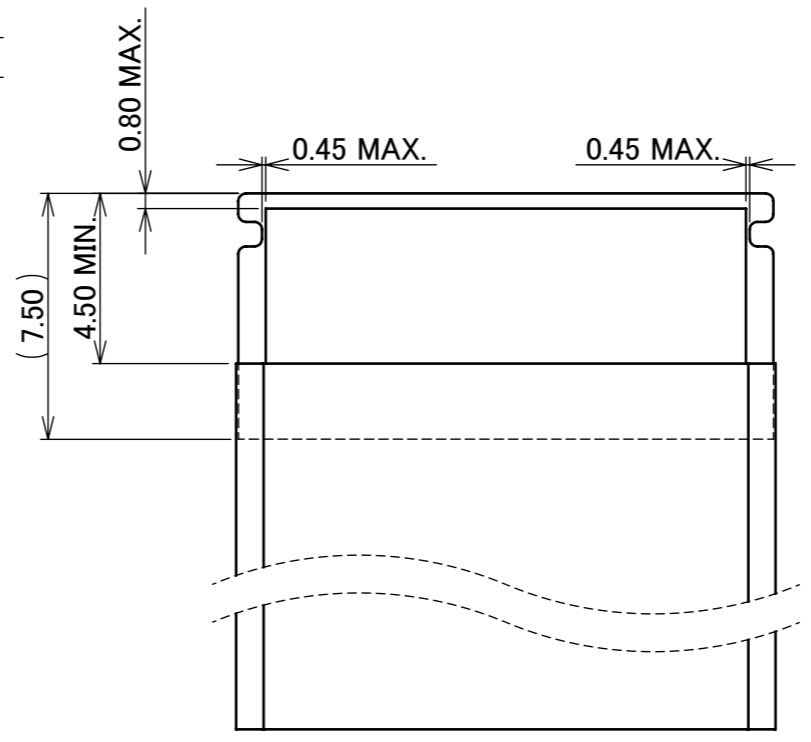
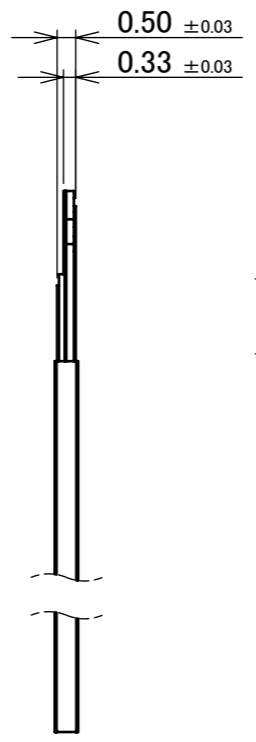
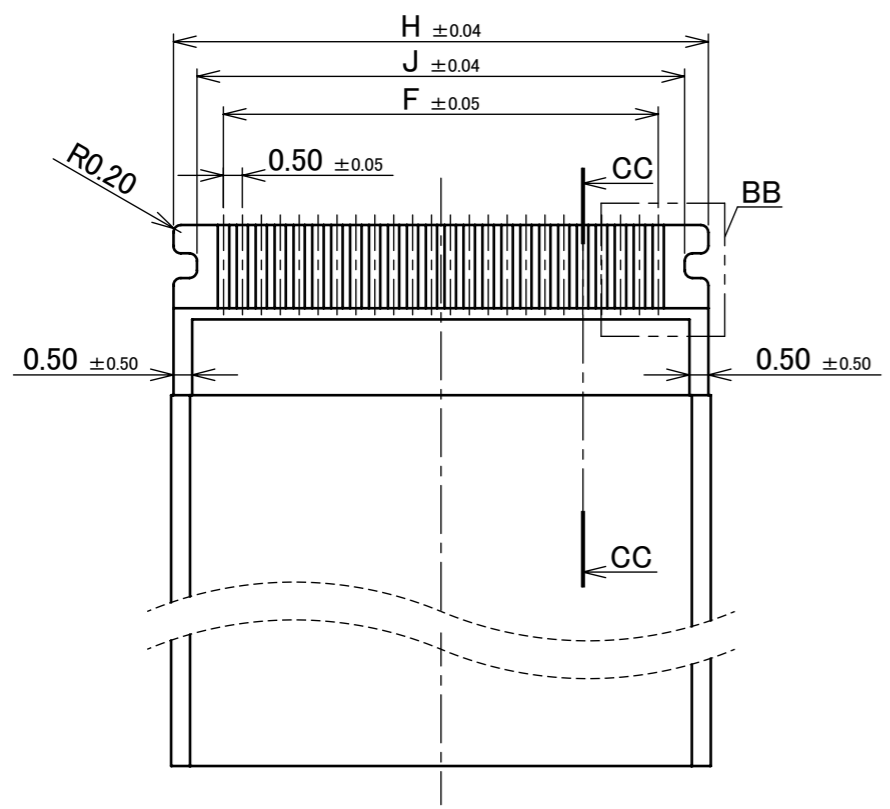
4	COVER	SUS	
3	SHELL	CORSON ALLOY	ALL OVER Ni 1.00 μm MIN. SOLDERING AREA: Au 0.02 μm MIN.
2	CONTACT	CORSON ALLOY	CONTACT AREA: Au 0.03 μm MIN. OVER Ni 1.00 μm MIN. SOLDERING AREA: Au 0.03 μm MIN. OVER Ni 1.00 μm MIN.
1	HOUSING	LCP	UL94V-0, BLACK
NO.	DISCRIPTION	MATERIAL	FINISH , REMARKS

5	Z230336	Y.I	Mar./23/'23	M.T	ANGLE	±2°	6 OVER 30 MAX.	±0.3	PROJECTION ⊕	SERIES No. R3	CUSTOMER COPY
4	Z220272	K.H	Mar./11/'22	H.I	6 MAX.	±0.2	30 OVER 120 MAX.	±0.5			
3	Z210312	H.K	Mar./23/'21	H.I	GENERAL TOLERANCE.				TITLE EVAFLEX® 5-HD	SCALE	I-PEX
2	Z210284	H.K	Mar./18/'21	H.I	DWG.	DATE		5:1			
1	Z200110	H.K	Jan./24/'20	H.I	H.Kaneko		2020/01/20	UNIT			
0	Z200028	H.K	Jan./20/'20		M.Muro			mm			
REV.	ECN	BY	DATE	APP.	APP.	DWG. No.		20952	SIZE	SHEET	REV.
REVISION RECORD					H.Ikari				A3	1/6	5

ITEMS	SPECIFICATION
RATING VOLTAGE	50V AC/DC (PER CONTACT PIN)
RATING AMPERAGE (FOR SIGNAL CONTACT)	0.30A AC/DC (PER CONTACT PIN)
OPERATING TEMPERATURE	233~358K (-40°C~+85°C)
OPERATING HUMIDITY	85% RH. MAX. (NON-CONDENSING)
CONTACT RESISTANCE (FOR SIGNAL CONTACT)	INITIAL : 60mohm MAX. / AFTER TEST : $\triangleleft$ 40mohm MAX.
INSULATION RESISTANCE	INITIAL : 500Mohm MIN. / AFTER TEST : 500Mohm MIN.
DIELECTRIC WITHSTANDING VOLTAGE	AC 250V 1min
DURABILITY	30 CYCLES
MATING FORCE (INITIAL / AFTER TEST)	24P : 22.00 N MAX.
UNMATING FORCE (INITIAL / AFTER TEST)	24P : 2.30 N MIN.
FFC/FPC RETENTION FORCE (INITIAL / AFTER TEST)	24P : 8.50 N MIN.
COPLANARITY	0.10 MAX.
PRODUCT SPECIFICATION	PRS-2645
TEST REPORT	TR-20006
PACKING STANDARD	PST-19012
INSTRUCTION MANUAL	HIM-19004
APPEARANCE CRITERIA No.	QLS-A***

ANGLE	$\pm 2^\circ$	6 OVER 30 MAX.	$\pm 0.3$	PROJECTION 	SERIES No. R3	CUSTOMER COPY		
6 MAX.	$\pm 0.2$	30 OVER 120 MAX.	$\pm 0.5$					
GENERAL TOLERANCE.				TITLE EVAFLEX <sup>®</sup> 5-HD	SCALE -	<b>I-PEX</b>		
DWG.	DATE							
CHK.								
APP.								
				DWG. No.	20952	SIZE A3	SHEET 2/6	REV. 5

PART NO.	Pos.	F	H	J
20952-024E-02	24	11.50	14.15	12.90



- NOTES.
- DIFFERENTIAL IMPEDANCE :  $90 \pm 10 \Omega$
  - SELECT A MATERIAL WITH A SOFTENING TEMPERATURE OF  $85^\circ\text{C}$  OR HIGHER FOR THE PATTERN ADHESIVE PART OF FFC.

NO.	DISCRIPTION	MATERIAL	FINISH , REMARKS
10	INTER LAYER	ARBITRARY	
9	SHIELD TAPE	METALLIC FILM	
8	GROUND TAPE	METALLIC FILM	POLISH or HALF POLISH Sn PLATING
7	REINFORCED TAPE	ARBITRARY	
6	INSULATION FILM	ARBITRARY	
5	CONDUCTOR	COPPER ALLOY	CONTACT AREA : Au $0.05 \mu\text{m}$ MIN. OVER Ni $0.5 \mu\text{m}$ MIN.

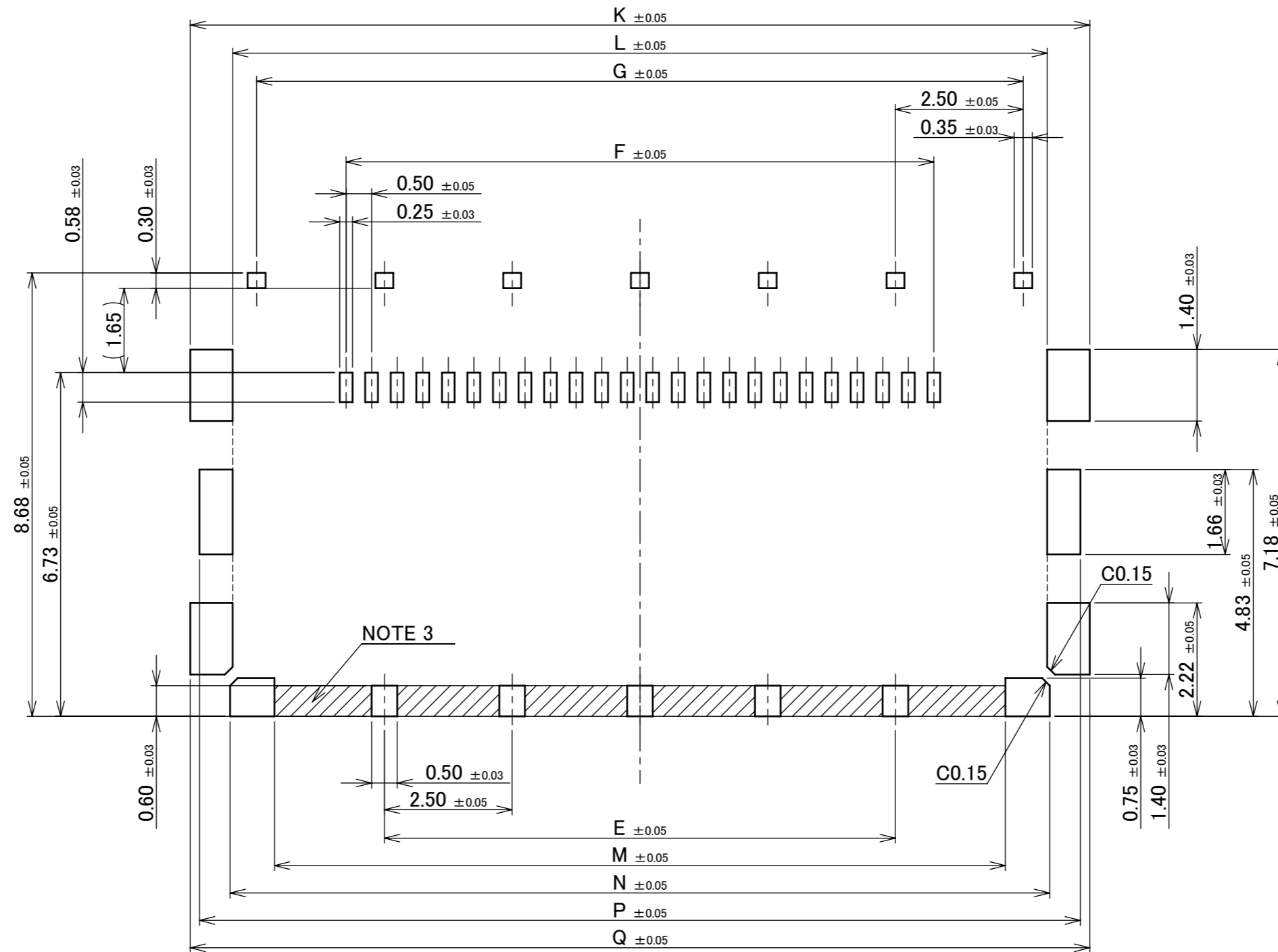
ANGLE	$\pm 2^\circ$	6 OVER 30 MAX.	$\pm 0.3$	PROJECTION ①	SERIES No. R3	CUSTOMER COPY		
6 MAX.	$\pm 0.2$	30 OVER 120 MAX.	$\pm 0.5$					
GENERAL TOLERANCE.				TITLE EVAFLEX® 5-HD	SCALE 5:1	I-PEX		
DWG.	DATE							
CHK.								
APP.								
				DWG. No.	20952	SIZE A3	SHEET 3/6	REV. 5

Confidential C

I-PEX Inc.

QKE-DFE06-02 REV.12

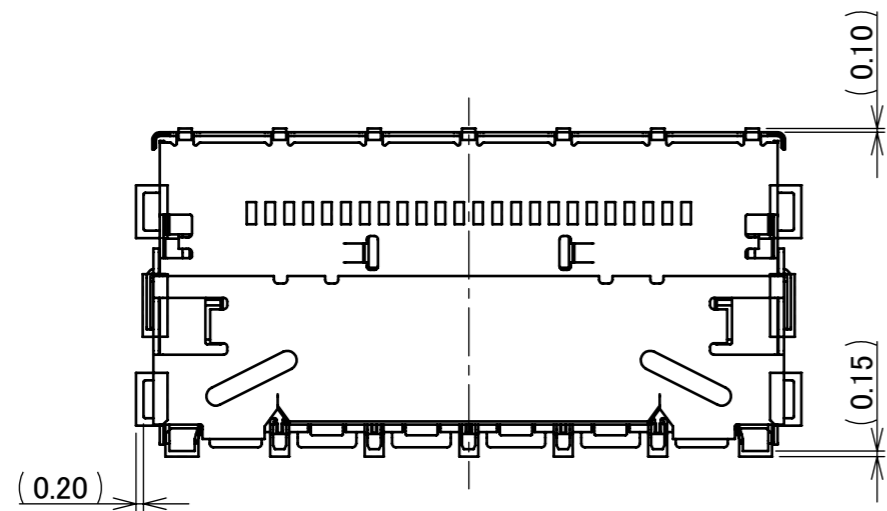
PART NO.	Pos.	E	F	G	K	L	M	N	P	Q
20952-024E-02	24	10.00	11.50	15.00	17.60	15.94	14.30	16.04	17.24	17.60



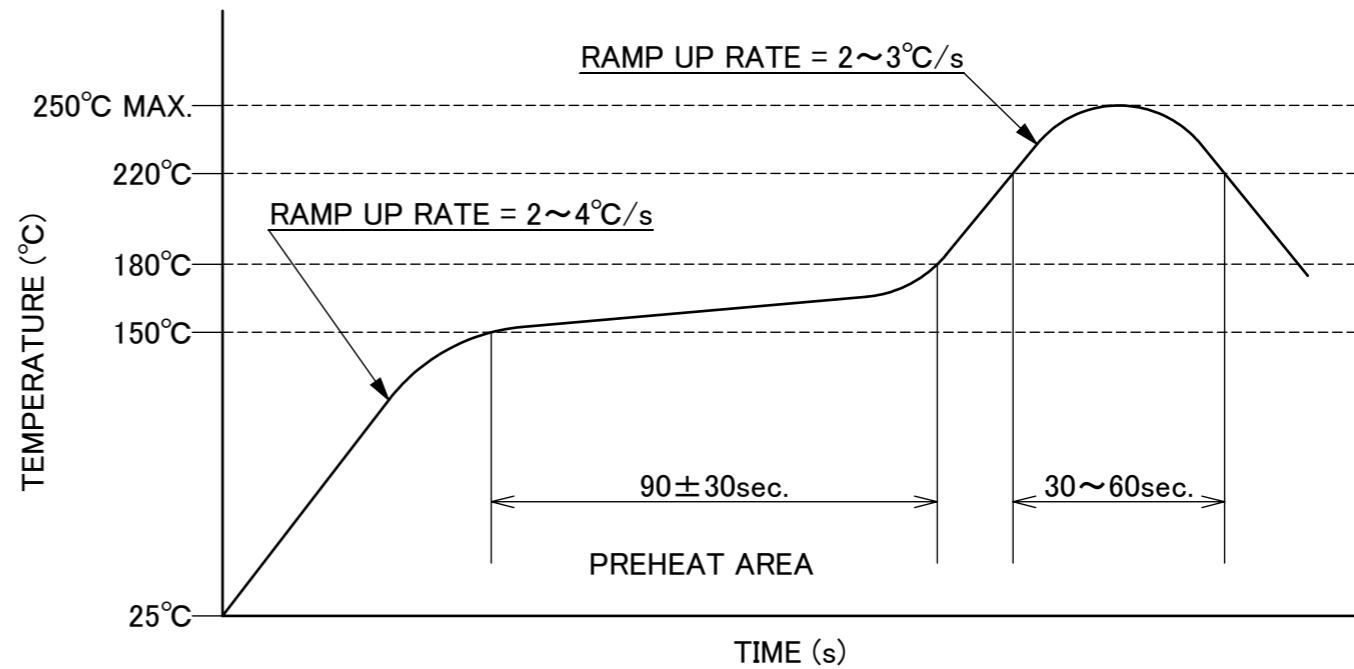
**RECOMMENDED PCB & METALMASK LAYOUT**  
**THICKNESS t=0.12**

NOTES.  
3. SOLDER RESIST MUST BE APPLIED TO THIS AREA.

ANGLE	±2°	6 OVER 30 MAX.	±0.3	PROJECTION	SERIES No.	CUSTOMER COPY	
	6 MAX.	±0.2	30 OVER 120 MAX.	±0.5	R3		
GENERAL TOLERANCE.				TITLE	EVAFLEX® 5-HD		
DWG.	DATE			SCALE			
CHK.				10:1			
APP.				UNIT			
				mm			
				DWG. No.	20952	SIZE	SHEET
						A3	4/6
						REV.	5



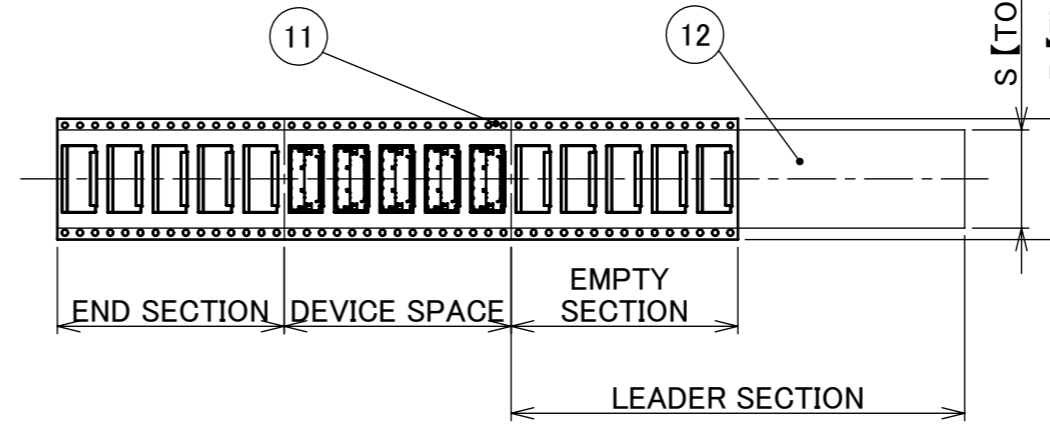
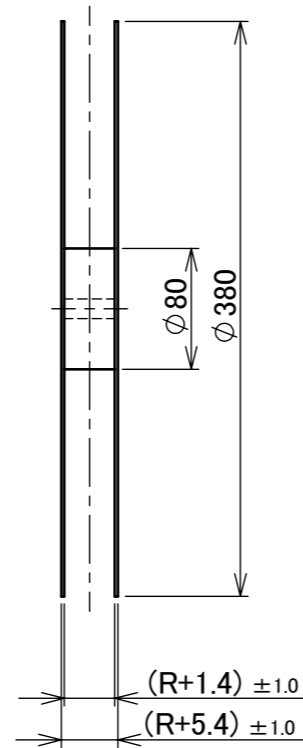
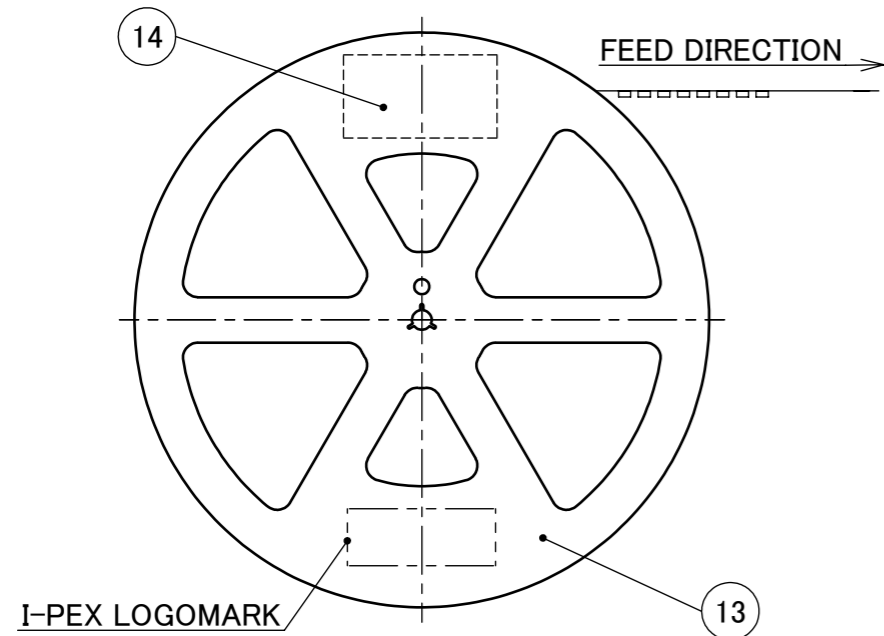
CONNECTOR ON RECOMMENDED FOOTPRINT PATTERN LAYOUT



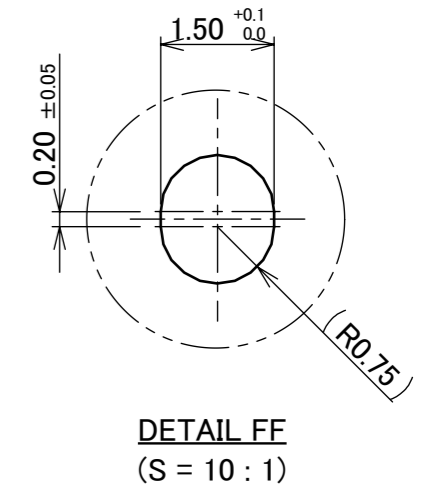
REFLOW TEMPERATURE PROFILE  
 SENJU METAL INDUSTRY CO., LTD. : M705-SHF(Sn96.5 Ag3.0 Cu0.5)

ANGLE	±2°	6 OVER 30 MAX.	±0.3	PROJECTION 	SERIES No. R3	CUSTOMER COPY					
6 MAX.	±0.2	30 OVER 120 MAX.	±0.5								
GENERAL TOLERANCE.				TITLE EVAFLEX® 5-HD		SCALE 5:1					
DWG.	DATE					UNIT mm					
CHK.						SIZE A3				SHEET 5/6	REV. 5
APP.				DWG. No. 20952							

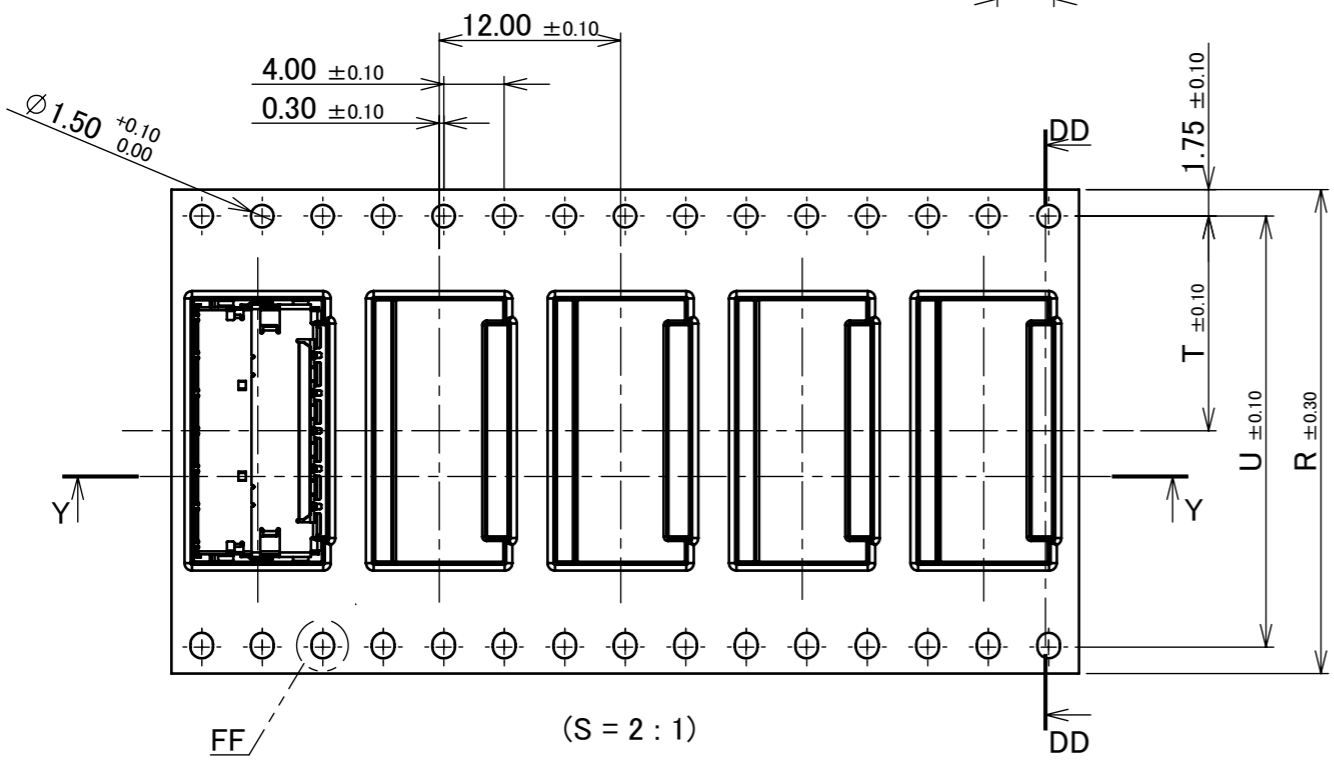
PART NO.	R	S	T	U	V	W	QTY. PER EMBOSS REEL (PIECES / REEL)	QTY. PER PACKING CARTON (REELS / CARTON)
20952-024E-02	32.00	26.00	14.20	28.40	17.50	14.15	2500 PIECES / REEL	4REELS / CARTON = 10000 PIECES / CARTON



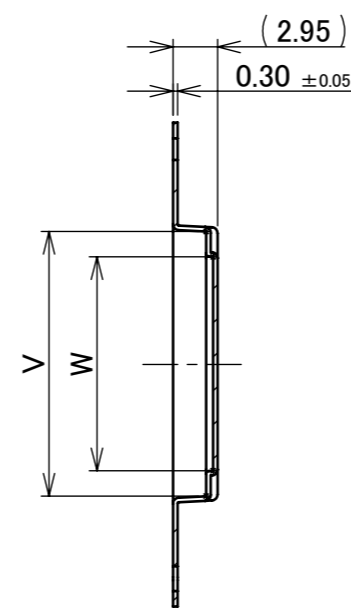
EMBOSS TAPE  
(S = 1 : 2)



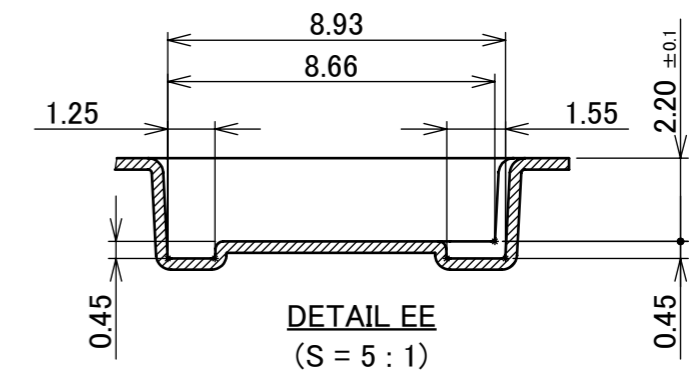
DETAIL FF  
(S = 10 : 1)



(S = 2 : 1)



SECT. DD-DD  
(S = 2 : 1)



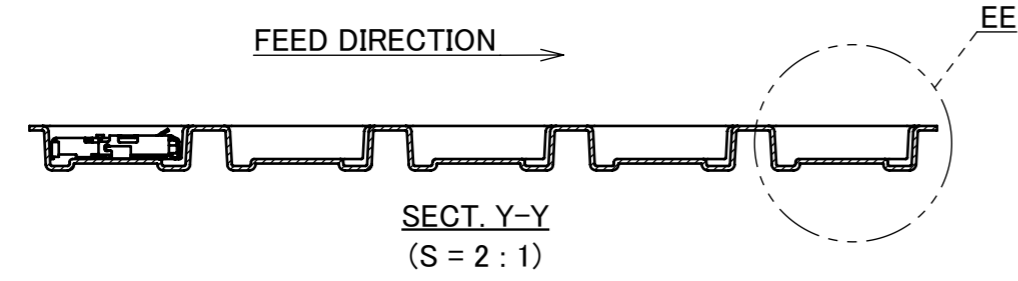
DETAIL EE  
(S = 5 : 1)

NOTES.

4. TAPING SPECIFICATION FOLLOWS JIS C 0806 (IEC 60286-3).
5. MAKE EMPTY SECTION OF LEADER AND END ON EACH END OF THE TAPE.
6. TOP TAPE SHALL NOT STICK OUT FROM EMBOSS TAPE.
7. TOP TAPE SHALL NOT COVER FEED HOLE.

14	PACKING LABEL	-	-
13	REEL	PS	ANTI-STATIC TYPE BLACK
12	TOP TAPE	PET t=0.062 TRANSPARENCY	ANTI-STATIC TYPE
11	EMBOSS TAPE	PS t=0.4 TRANSPARENCY	ANTI-STATIC TYPE
NO.	DISCRIPTION	MATERIAL	FINISH , REMARKS

ANGLE	$\pm 2^\circ$	6 OVER 30 MAX.	$\pm 0.3$	PROJECTION 	SERIES No. R3	CUSTOMER COPY		
6 MAX.	$\pm 0.2$	30 OVER 120 MAX.	$\pm 0.5$			SCALE 1:X	<b>I-PEX</b>	SHEET 6/6
GENERAL TOLERANCE.				TITLE EVAFLEX® 5-HD	UNIT mm			
DWG.	DATE			DWG. No. 20952	SIZE A3			
CHK.								
APP.								



SECT. Y-Y  
(S = 2 : 1)