

Recommended P/N

20952-0**E-02

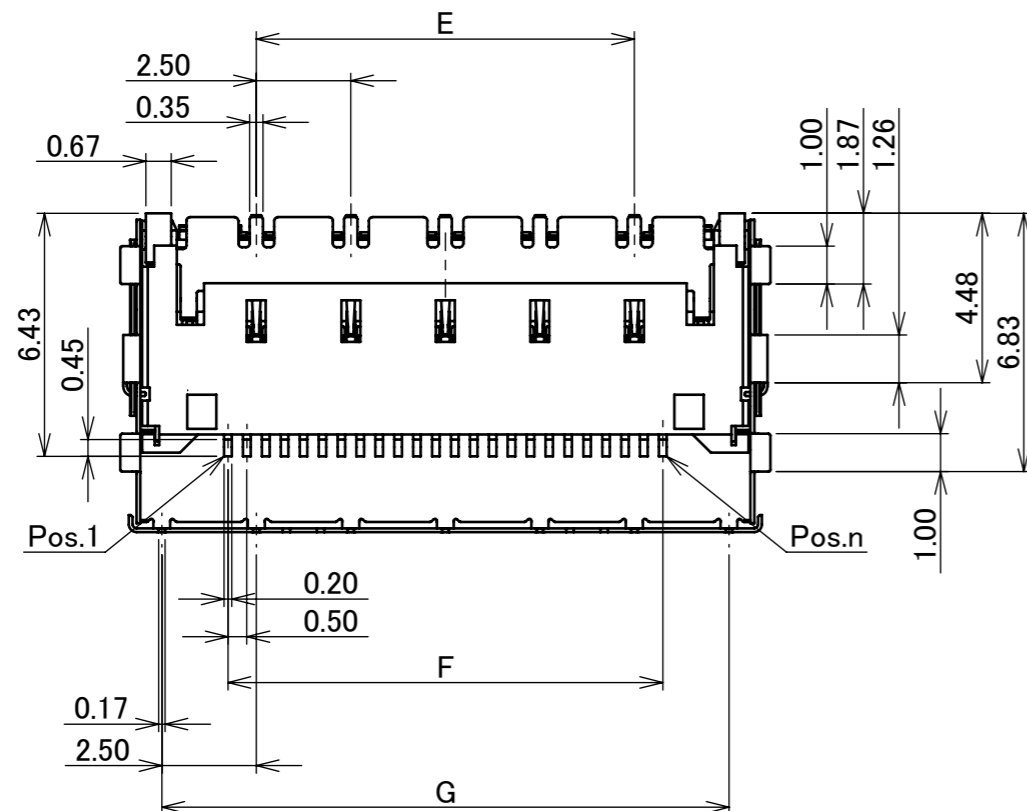
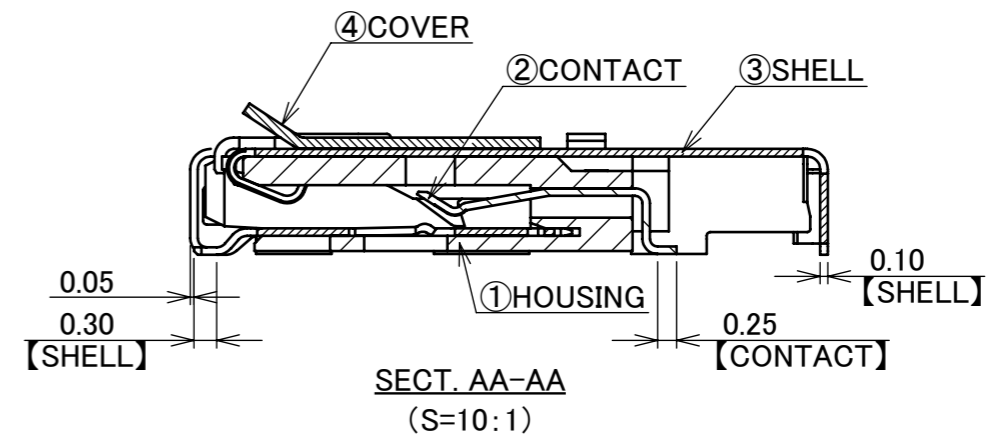
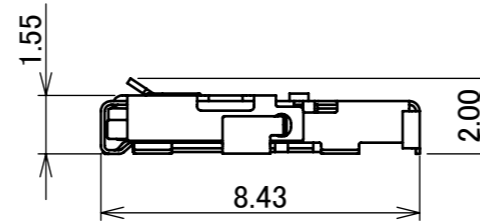
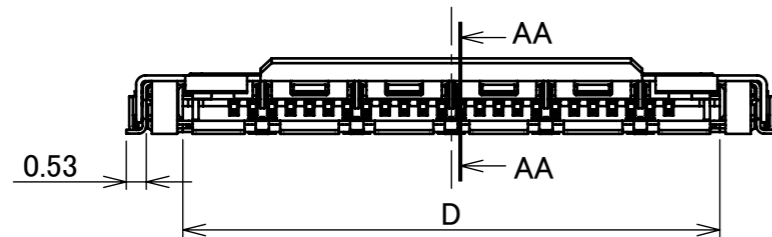
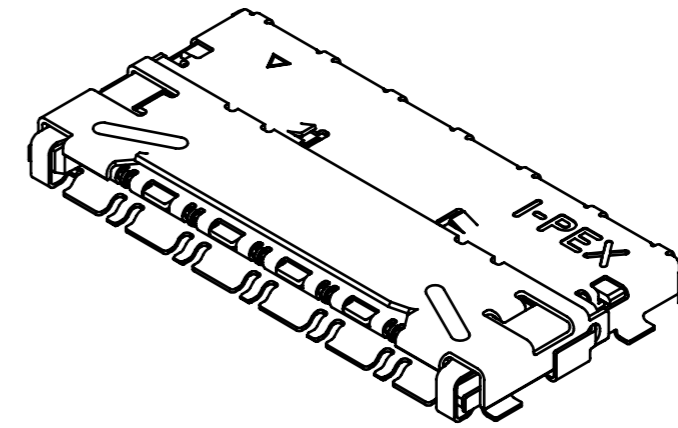
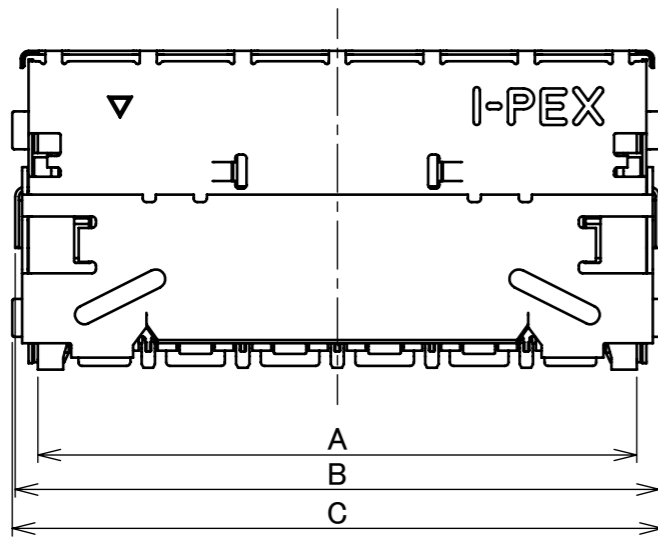
PART NO.	Pos.	A	B	C	D	E	F	G
20952-024E-02	24	15.84	17.04	17.20	14.20	10.00	11.50	15.00



Halogen Free



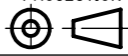
RoHS Compliant



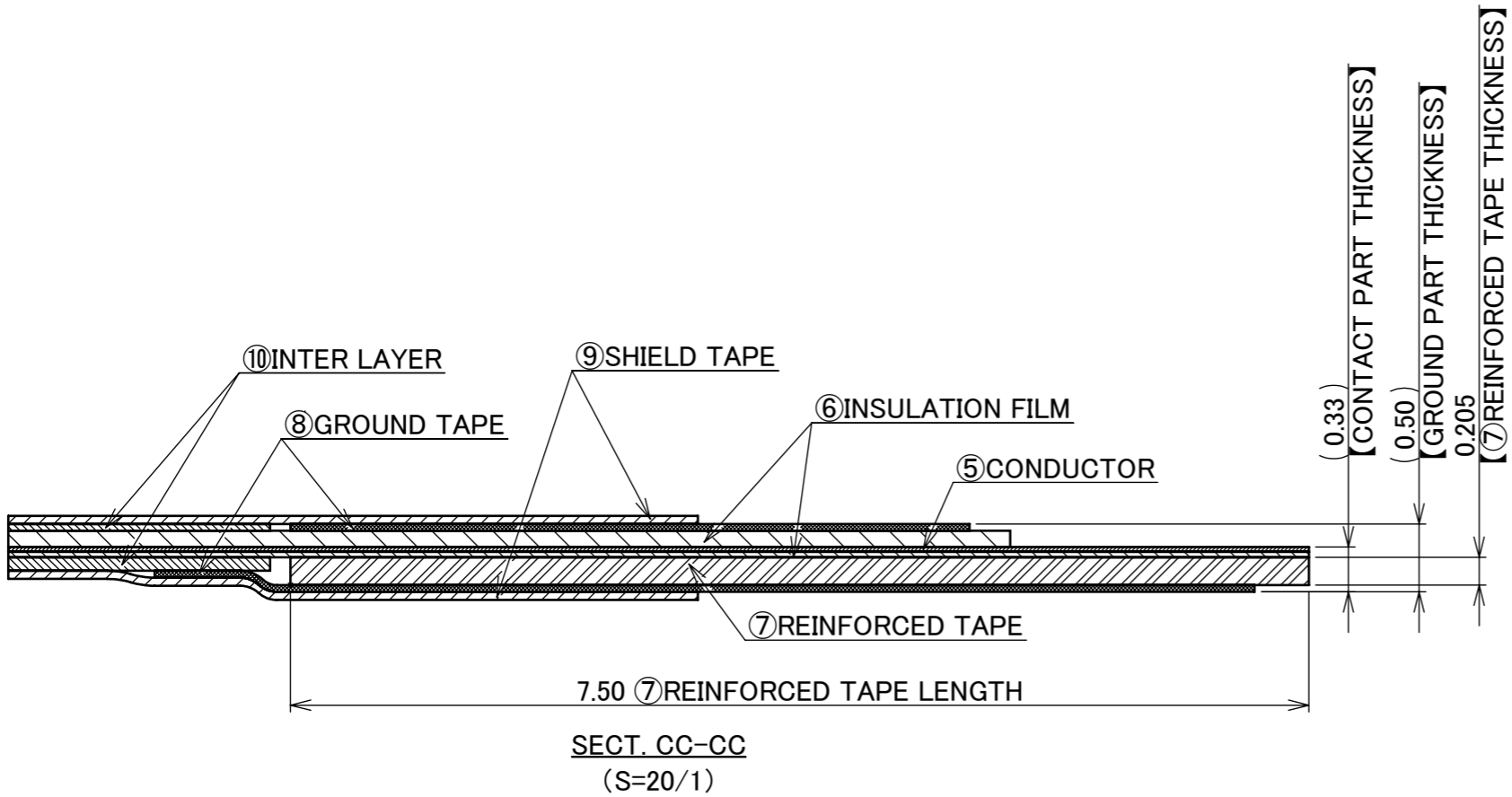
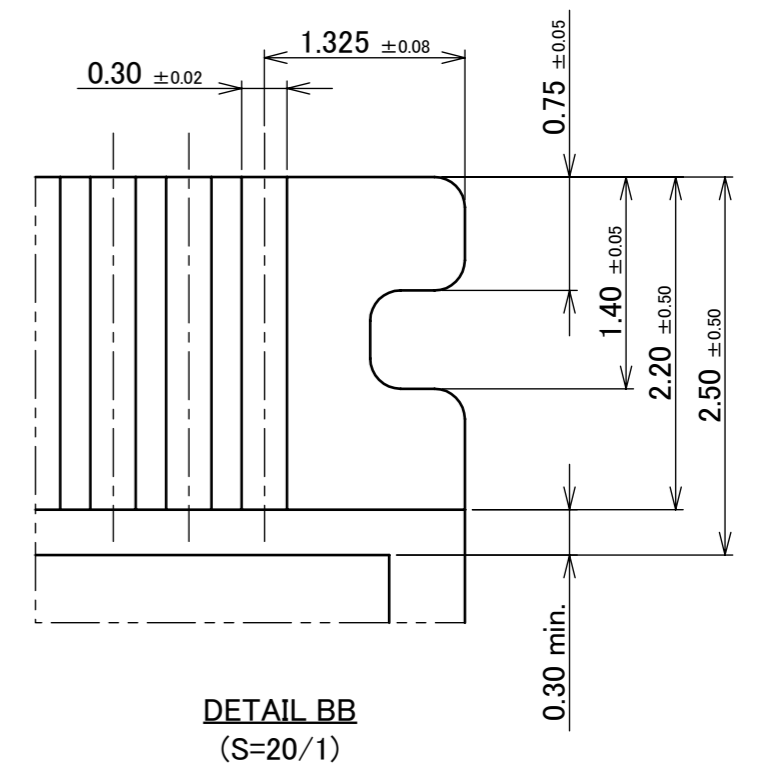
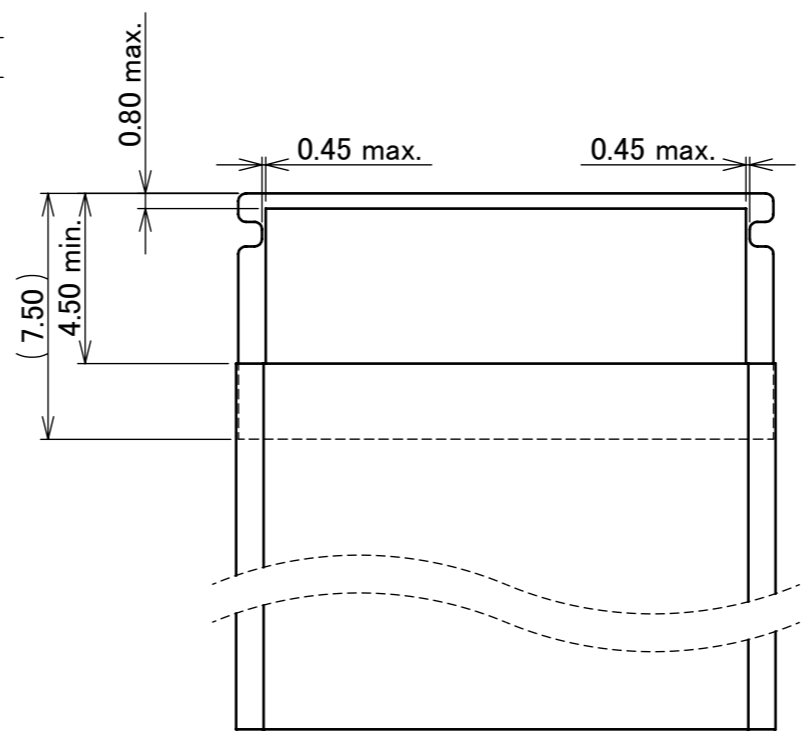
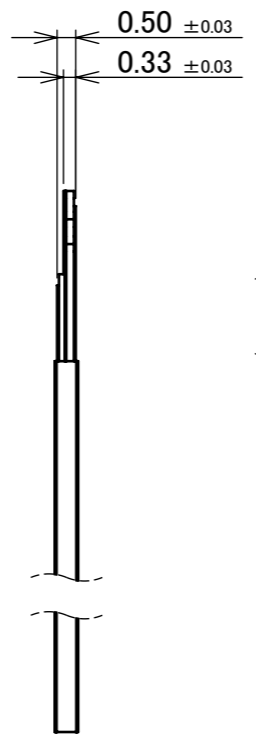
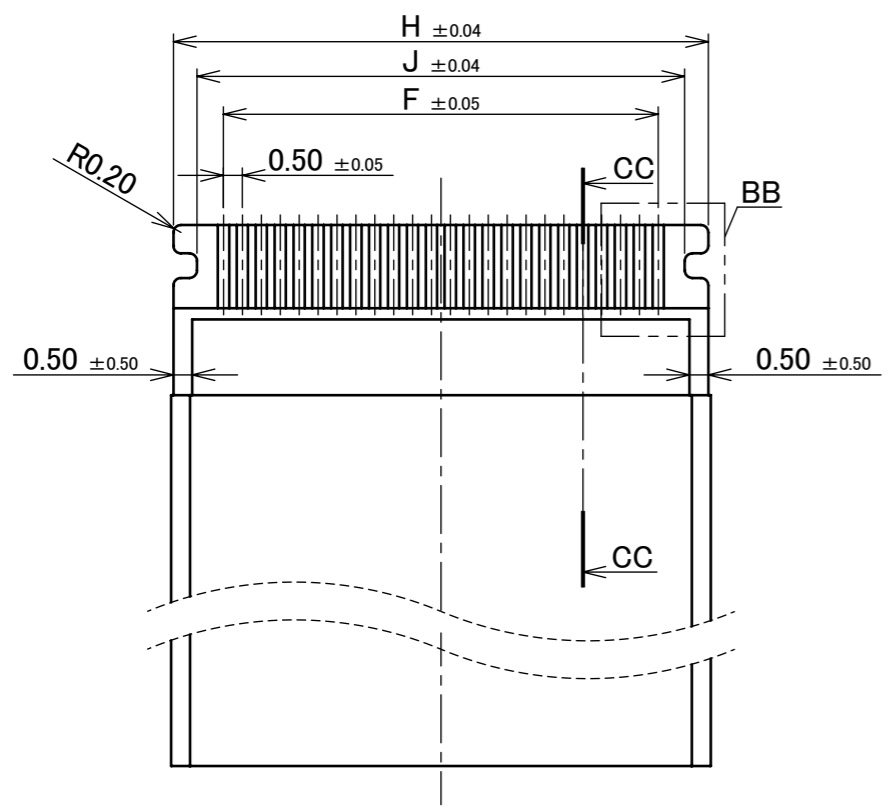
4	COVER	SUS	
3	SHELL	CORSON ALLOY	ALL OVER Ni 1.00 μm MIN. SOLDERING AREA: Au 0.02 μm MIN.
2	CONTACT	CORSON ALLOY	CONTACT AREA: Au 0.03 μm MIN. OVER Ni 1.00 μm MIN. SOLDERING AREA: Au 0.03 μm MIN. OVER Ni 1.00 μm MIN.
1	HOUSING	LCP	UL94V-0, BLACK
NO.	DISCRIPTION	MATERIAL	FINISH , REMARKS

					ANGLE	±2°	6 OVER 30 MAX.	±0.3	PROJECTION	SERIES No.	CUSTOMER COPY	
4	Z220272	K.H	Mar./11/'22	H.I	6 MAX.	±0.2	30 OVER 120 MAX.	±0.5	⊕	R3		
3	Z210312	H.K	Mar./23/'21	H.I	GENERAL TOLERANCE.				TITLE		SCALE	
2	Z210284	H.K	Mar./18/'21	H.I	DWG.	DATE		EVAFLEX® 5-HD		5:1		
1	Z200110	H.K	Jan./24/'20	H.I	H.Kaneko		2020/01/20				UNIT	
0	Z200028	H.K	Jan./20/'20		CHK.	M.Muro				mm		
REV.	ECN	BY	DATE	APP.	APP.	H.Ikari		DWG. No.		20952	SIZE	
REVISION RECORD											A3	SHEET
											1/6	REV.
											4	

ITEMS	SPECIFICATION
RATING VOLTAGE	50V AC/DC (PER CONTACT PIN)
RATING AMPERAGE (FOR SIGNAL CONTACT)	0.30A AC/DC (PER CONTACT PIN)
OPERATING TEMPERATURE	233~358K (-40°C~+85°C)
OPERATING HUMIDITY	85% RH. MAX. (NON-CONDENSING)
CONTACT RESISTANCE (FOR SIGNAL CONTACT)	INITIAL : 60mohm MAX. / AFTER TEST : \triangleleft 40mohm MAX.
INSULATION RESISTANCE	INITIAL : 500Mohm MIN. / AFTER TEST : 500Mohm MIN.
DIELECTRIC WITHSTANDING VOLTAGE	AC 250V 1min
DURABILITY	30 CYCLES
MATING FORCE (INITIAL / AFTER TEST)	24P : 22.00 N MAX.
UNMATING FORCE (INITIAL / AFTER TEST)	24P : 2.30 N MIN.
FFC/FPC RETENTION FORCE (INITIAL / AFTER TEST)	24P : 8.50 N MIN.
COPLANARITY	0.10 MAX.
PRODUCT SPECIFICATION	PRS-2645
TEST REPORT	TR-20006
PACKING STANDARD	PST-19012
INSTRUCTION MANUAL	HIM-19004
APPEARANCE CRITERIA No.	QLS-A***

ANGLE	$\pm 2^\circ$	6 OVER 30 MAX.	± 0.3	PROJECTION 	SERIES No. R3	CUSTOMER COPY		
6 MAX.	± 0.2	30 OVER 120 MAX.	± 0.5					
GENERAL TOLERANCE.				TITLE EVAFLEX® 5-HD	SCALE 5:1	I-PEX		
DWG.	DATE							
CHK.								
APP.								
				DWG. No.	20952	SIZE A3	SHEET 2/6	REV. 4

PART NO.	Pos.	F	H	J
20952-024E-02	24	11.50	14.15	12.90



- NOTES.
- DIFFERENTIAL IMPEDANCE : $90 \pm 10 \Omega$
 - SELECT A MATERIAL WITH A SOFTENING TEMPERATURE OF 85°C OR HIGHER FOR THE PATTERN ADHESIVE PART OF FFC.

NO.	DISCRIPTION	MATERIAL	FINISH , REMARKS
10	INTER LAYER	ARBITRARY	
9	SHIELD TAPE	METALLIC FILM	
8	GROUND TAPE	METALLIC FILM	POLISH or HALF POLISH Sn PLATING
7	REINFORCED TAPE	ARBITRARY	
6	INSULATION FILM	ARBITRARY	
5	CONDUCTOR	COPPER ALLOY	CONTACT AREA : Au $0.05 \mu\text{m}$ MIN. OVER Ni $0.5 \mu\text{m}$ MIN.

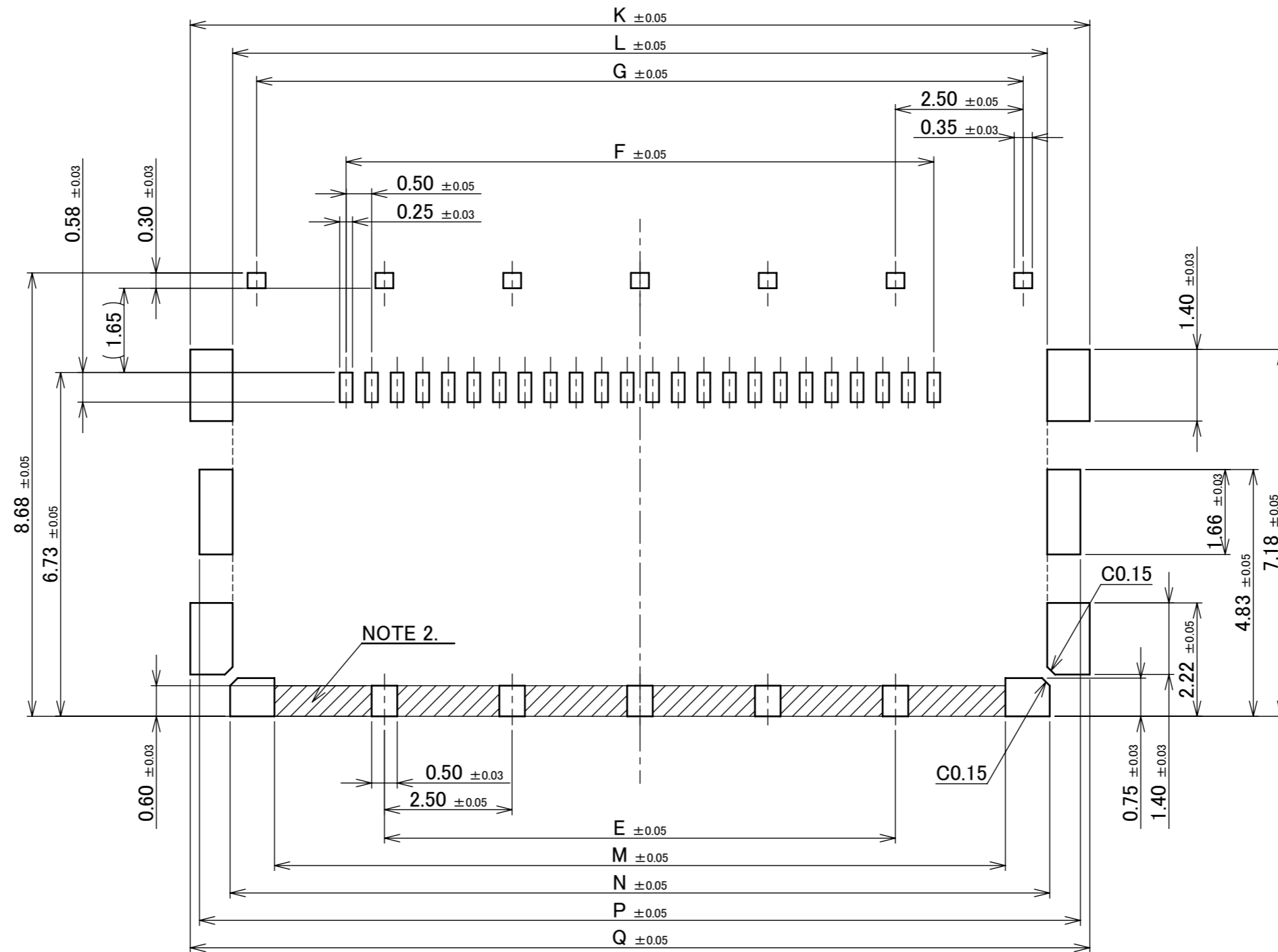
ANGLE	$\pm 2^\circ$	6 OVER 30 MAX.	± 0.3	PROJECTION ①	SERIES No. R3	CUSTOMER COPY			
6 MAX.	± 0.2	30 OVER 120 MAX.	± 0.5						
GENERAL TOLERANCE.				TITLE EVAFLEX® 5-HD	SCALE 5:1	I-PEX			
DWG.	DATE								
CHK.									UNIT mm
APP.									SIZE A3
				DWG. No.	20952				

Confidential C

I-PEX Inc.

QKE-DFE06-02 REV.12

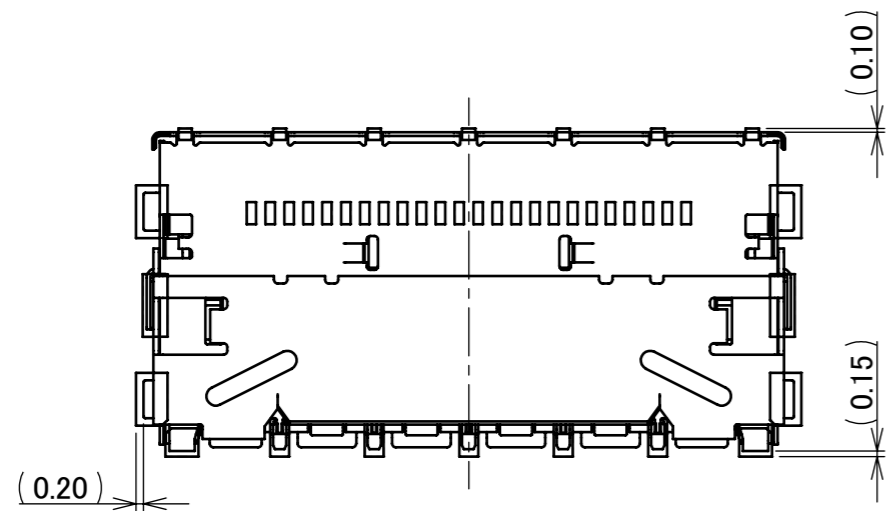
PART NO.	Pos.	E	F	G	K	L	M	N	P	Q
20952-024E-02	24	10.00	11.50	15.00	17.60	15.94	14.30	16.04	17.24	17.60



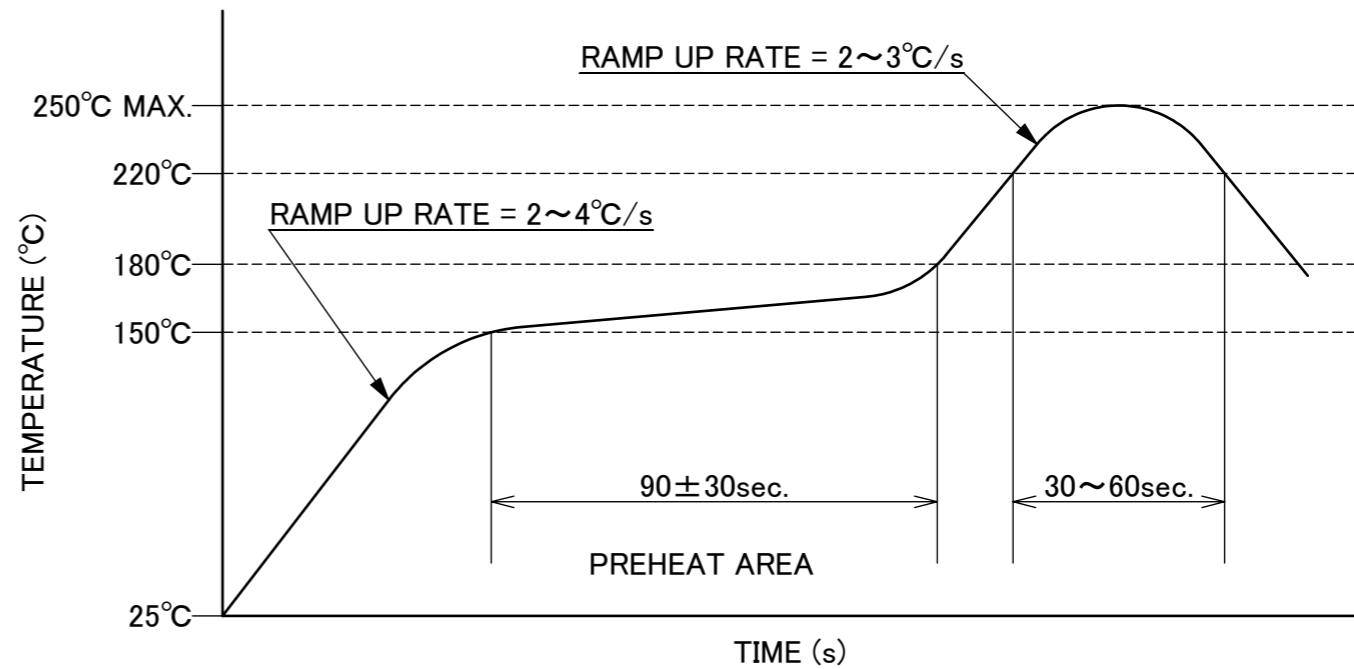
RECOMMENDED PCB & METALMASK LAYOUT
THICKNESS t=0.12

NOTES.
 3. HATCHING AREA:
 SOLDER RESIST SHALL BE COATED IN CASE OF RUNNING TRACES
 ON THIS FOOTPRINT PATTERN PROHIBITION AREA.

ANGLE	±2°	6 OVER 30 MAX.	±0.3	PROJECTION	SERIES No.	CUSTOMER COPY	
	6 MAX.	±0.2	30 OVER 120 MAX.	±0.5	R3		
GENERAL TOLERANCE.				TITLE	EVAFLEX® 5-HD		
DWG.	DATE			SCALE			
CHK.				5:1			
APP.				UNIT			
				mm			
				DWG. No.	20952	SIZE	SHEET
						A3	4/6
						REV.	4



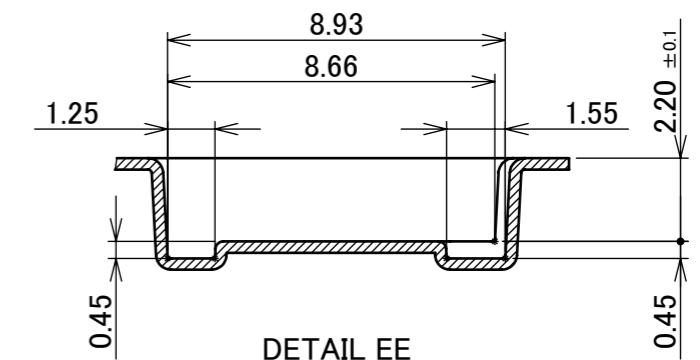
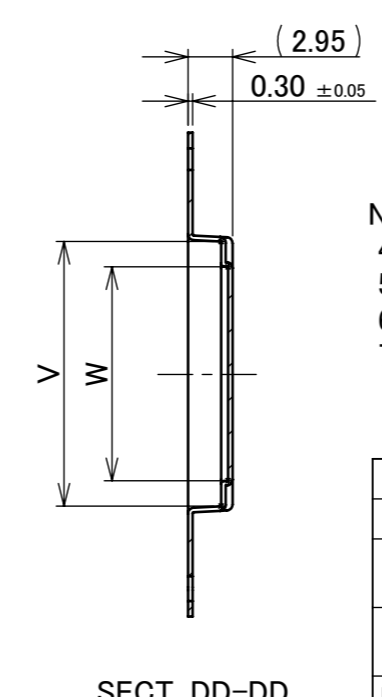
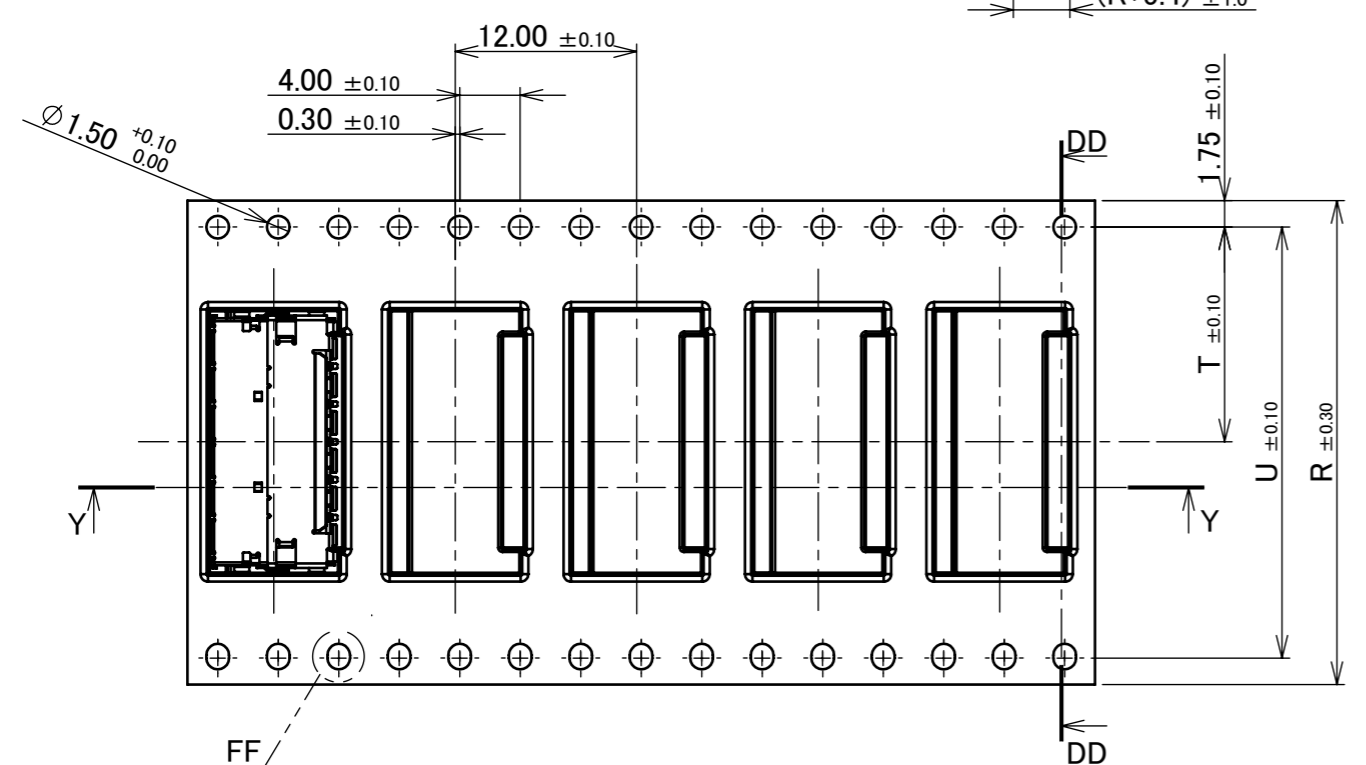
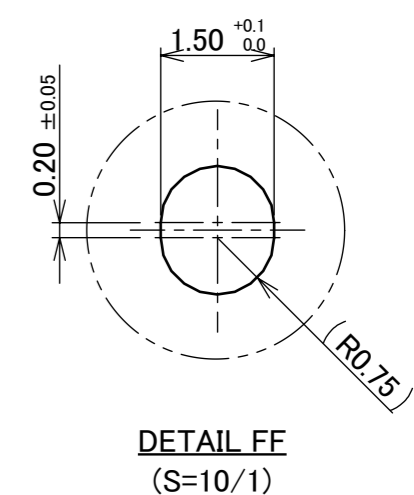
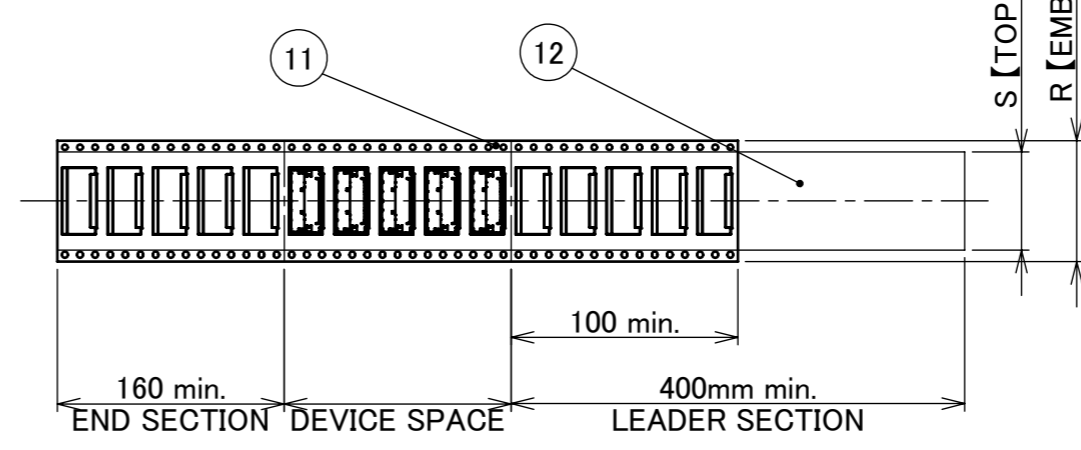
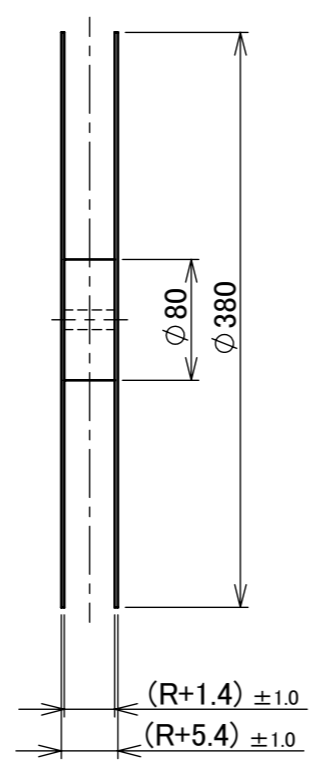
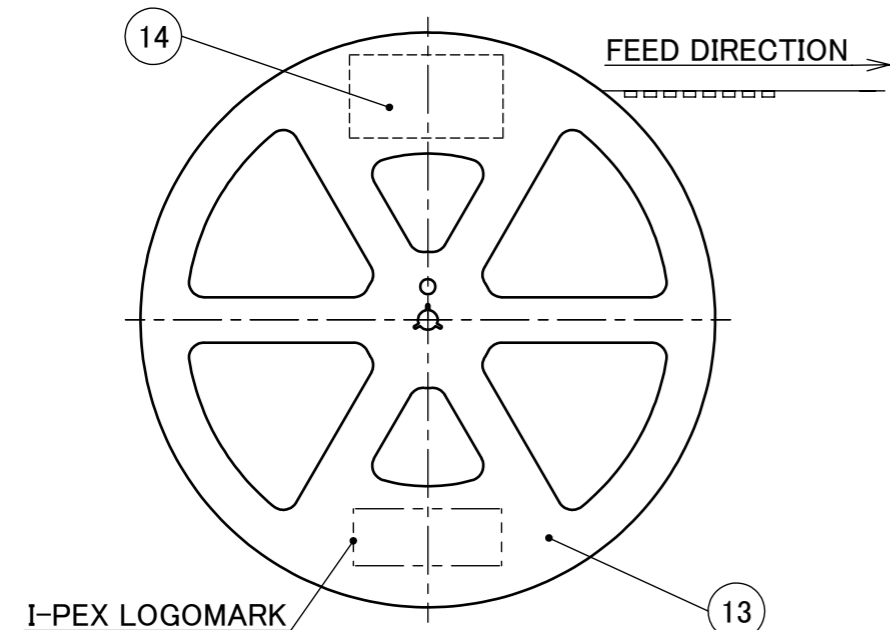
CONNECTOR ON RECOMMENDED FOOTPRINT PATTERN LAYOUT



REFLOW TEMPERATURE PROFILE
 SENJU METAL INDUSTRY CO., LTD. : M705-SHF(Sn96.5 Ag3.0 Cu0.5)

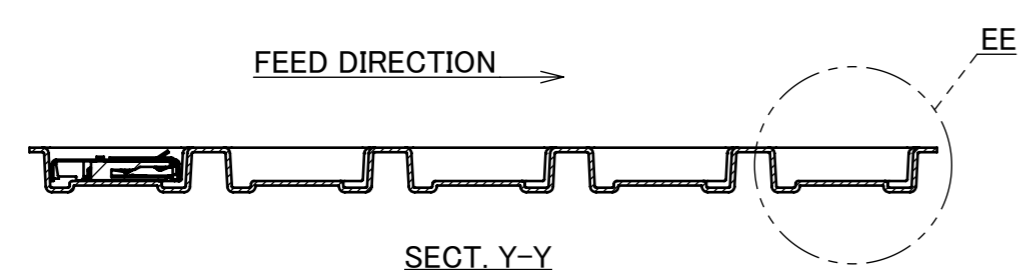
ANGLE	±2°	6 OVER 30 MAX.	±0.3	PROJECTION 	SERIES No. R3	CUSTOMER COPY						
6 MAX.	±0.2	30 OVER 120 MAX.	±0.5									
GENERAL TOLERANCE.				TITLE EVAFLEX® 5-HD		SCALE	I-PEX					
DWG.	DATE					5:1						
CHK.						UNIT						
APP.						mm						
				DWG. No.		SIZE	SHEET	REV.				
				20952		A3	5/6	4				

PART NO.	R	S	T	U	V	W	QTY. PER EMBOSS REEL (PIECES / REEL)	QTY. PER PACKING CARTON (REELS / CARTON)
20952-024E-02	32.00	26.00	14.20	28.40	17.50	14.15	2500 PIECES / REEL	4REELS / CARTON = 10000 PIECES / CARTON



- NOTES.
- TAPING SPECIFICATION FOLLOWS JIS C 0806 (IEC 60286-3).
 - MAKE EMPTY SECTION OF LEADER AND END ON EACH END OF THE TAPE.
 - TOP TAPE SHALL NOT STICK OUT FROM EMBOSS TAPE.
 - TOP TAPE SHALL NOT COVER FEED HOLE.

14	PACKING LABEL	-	-
13	REEL	PS	ANTI-STATIC TYPE BLACK
12	TOP TAPE	PET t=0.062 TRANSPARENCY	ANTI-STATIC TYPE
11	EMBOSS TAPE	PS t=0.4 TRANSPARENCY	ANTI-STATIC TYPE
NO.	DISCRIPTION	MATERIAL	FINISH , REMARKS



ANGLE	$\pm 2^\circ$	6 OVER 30 MAX.	± 0.3	PROJECTION 	SERIES No. R3	CUSTOMER COPY	
	6 MAX.	± 0.2	30 OVER 120 MAX.				
GENERAL TOLERANCE.				TITLE	I-PEX		
DWG.	DATE			EVAFLEX® 5-HD			
CHK.				SCALE			
APP.				5:1			
				DWG. No.	20952	UNIT	mm
				SIZE	A3	SHEET	6/6
						REV.	4