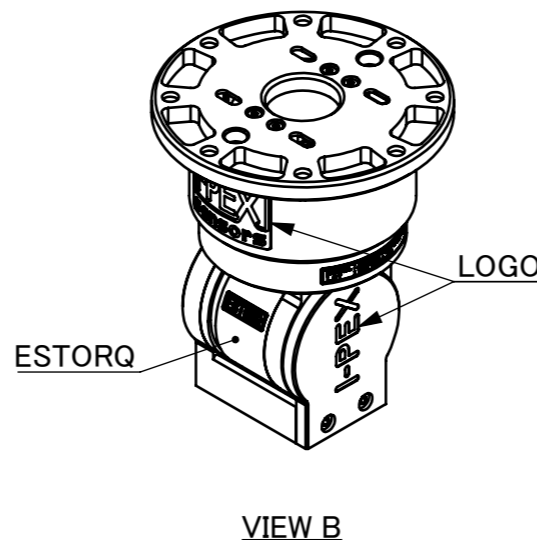
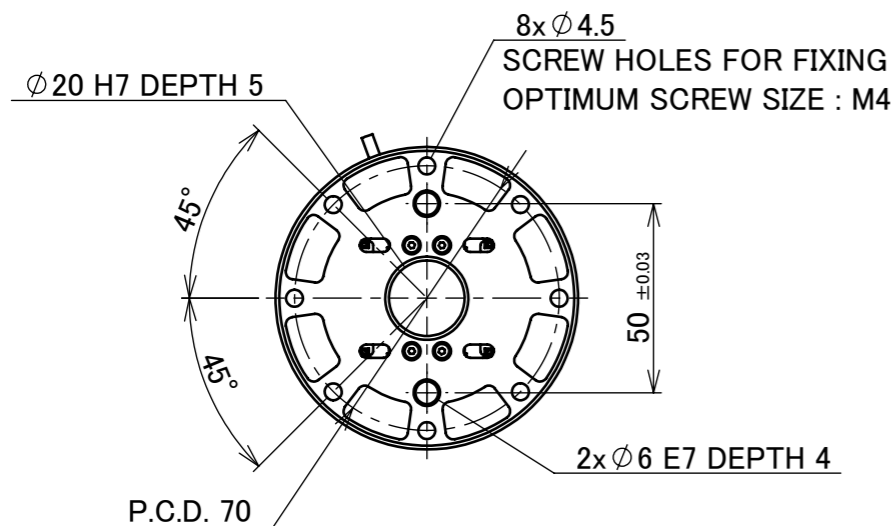




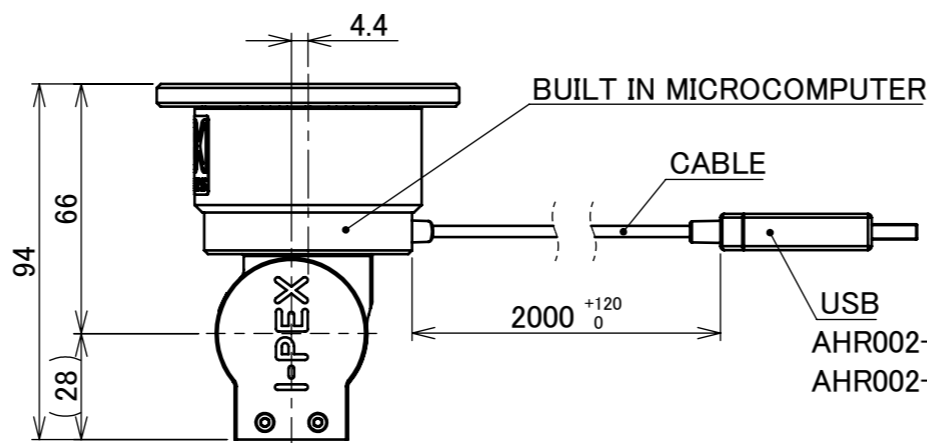
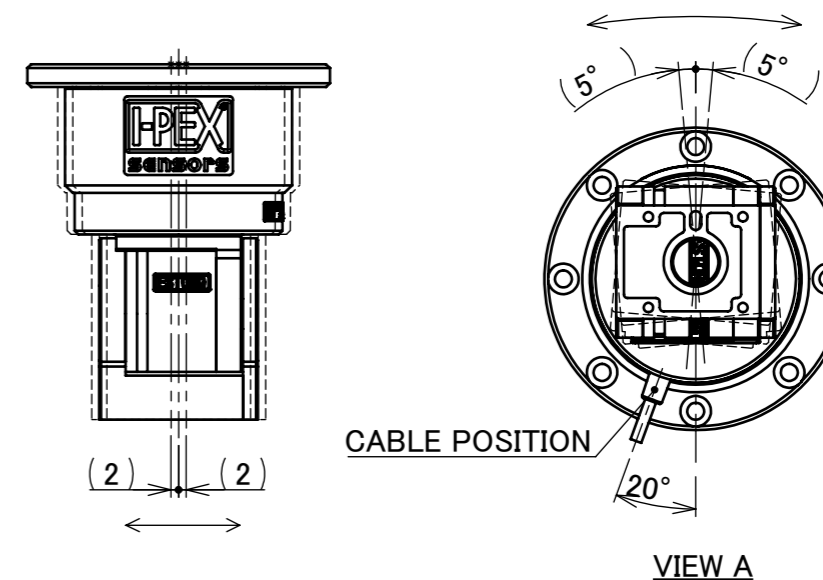
PART No.
AHR002-01-*0*-0

AHR002-01-*0*-0

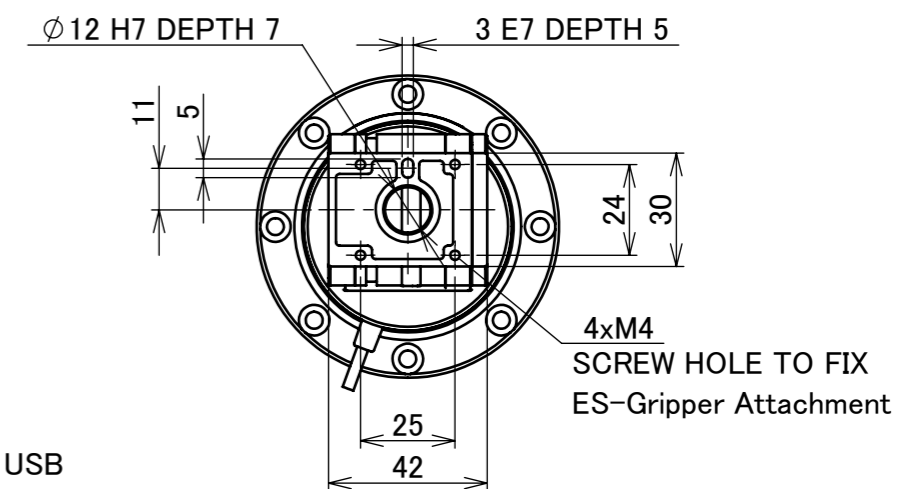
IT IS CODE No. THAT I-PEX USES.
 1 : OUTPUT FORM RS-422 , WITH USB
 2 : OUTPUT FORM RS-422 , WITHOUT USB
 A : WITH FLOATING MECHANISM
 B : WITHOUT FLOATING MECHANISM
 ES-Gripper Body



< RANGE OF MOTION >
*WITH FLOATING MECHANISM



AHR002-01-*01*-0 : WITH USB
 AHR002-01-*02*-0 : WITHOUT USB



- NOTES.
 1. MATERIAL
 FRAMEWORK : ALUMINUM
 2. WEIGHT : APPROXIMATELY 415g
 3. ES-Gripper Body USES MAGNETIC PARTS.

					ANGLE	±2°	6 OVER 30 MAX.	±0.3	PROJECTION	SERIES No.	CUSTOMER COPY
					6 MAX.	±0.2	30 OVER 120 MAX.	±0.5		-	
					GENERAL TOLERANCE.				TITLE		SCALE
					DWG.	H.Tagomori	DATE	2019/07/03	ES-GRIPPER® BODY		1:2
					CHK.	S.Nagaoka	DATE	2019/07/05	GENERATION 2		UNIT
0	Jul./03/'19	H.T			APP.	S.Nagaoka	DATE	2019/07/05	VERTICAL TYPE		mm
REV.	DATE	DWG.	CHK.	APP.	REVISION RECORD				DWG. No.	AHR002-01	SIZE
											A3
											SHEET 1/1
											REV. 0

