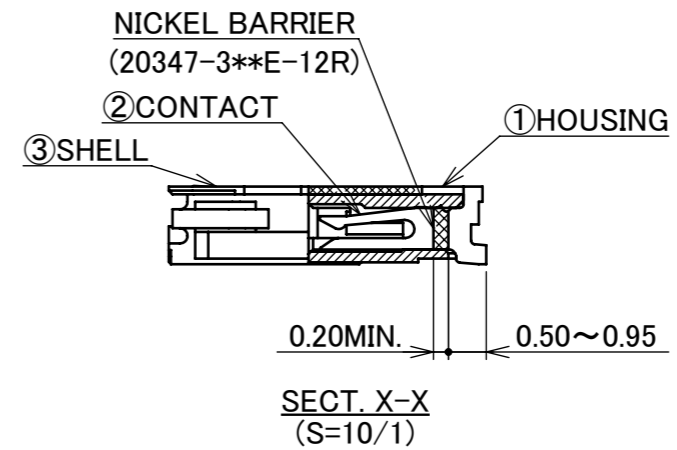
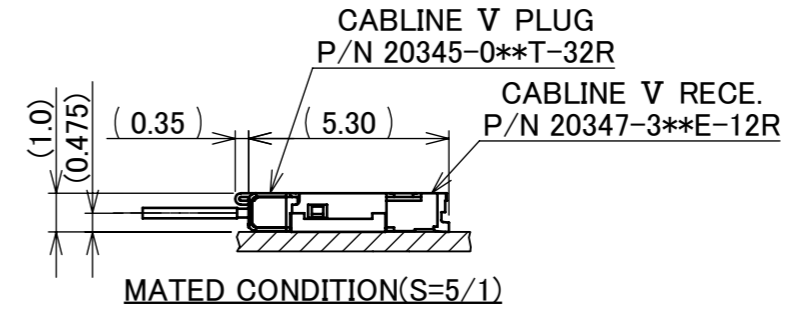
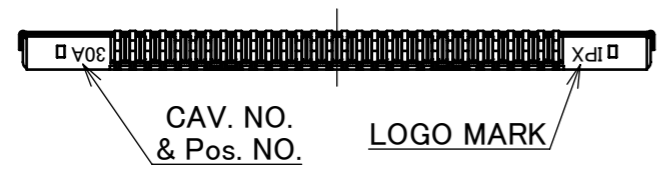
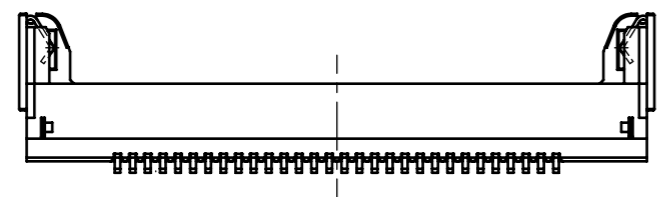
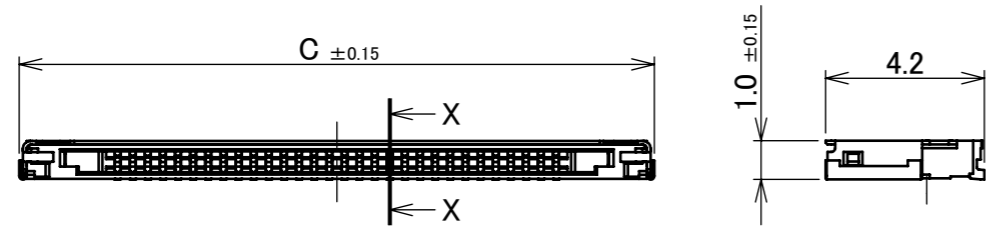
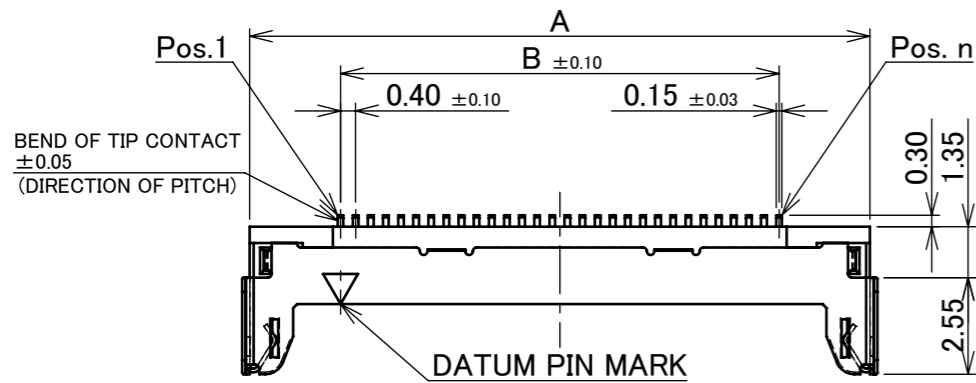
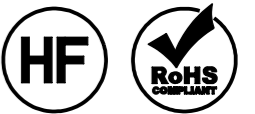


Recommended P/N 20347-3\*\*E-12R

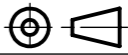
PART NO.	POS.	A	B	C
20347-310E-12R	10	8.40	3.60	8.80
20347-315E-12R	15	10.40	5.60	10.80
20347-320E-12R	20	12.40	7.60	12.80
20347-325E-12R	25	14.40	9.60	14.80
20347-330E-12R	30	16.40	11.60	16.80
20347-335E-12R	35	18.40	13.60	18.80
20347-340E-12R	40	20.40	15.60	20.80



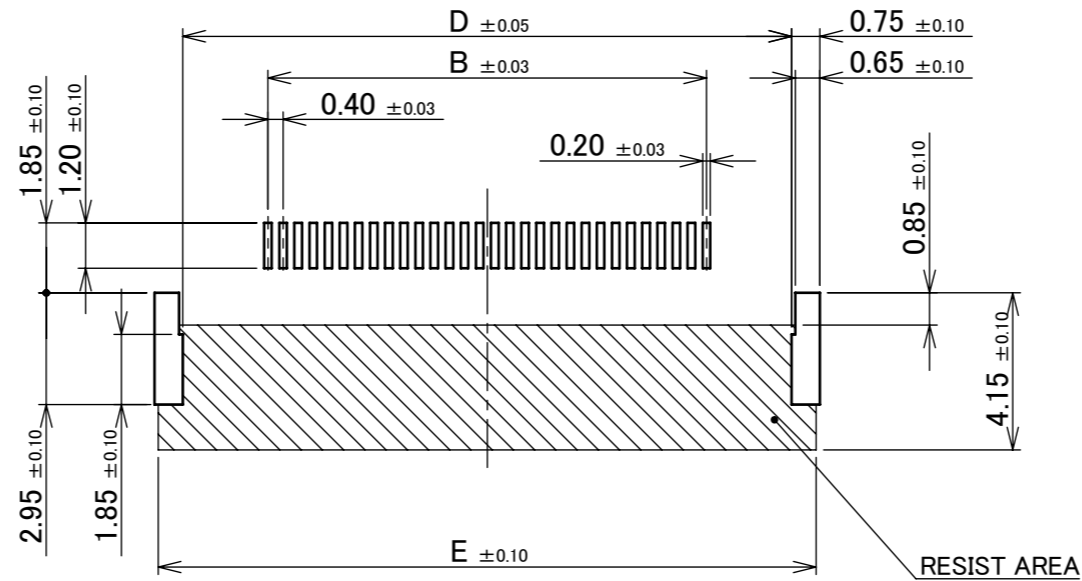
NO.	DISCRIPTION	MATERIAL	FINISH , REMARKS
3	SHELL	PHOSPHOR BRONZE	Sn 1.00 μ m MIN. OVER Ni 1.00 μ m MIN.
2	CONTACT	PHOSPHOR BRONZE	ALL OVER: Ni 1.00 μ m MIN. UNDER PLATING CONTACT AREA: Au 0.10 μ m MIN. SOLDERING AREA: Au 0.03 μ m MIN.
1	HOUSING	LCP	UL94V-0, BRACK

REV.	ECN	BY	DATE	APP.	APP.	DATE	PROJECTION	SERIES No.	TITLE	SCALE	SHEET	REV.
34	Z210585	A.K	June/07/'21	H.I	ANGLE	±2°	6 OVER 30 MAX.	±0.3	PROJECTION SERIES No. R12	CUSTOMER COPY	SCALE 5:1	UNIT mm
33	Z200103	A.K	Jan./23/'20	H.I	6 MAX.	±0.2	30 OVER 120 MAX.	±0.5				
32	Z181347	K.H	Oct./15/'18	H.I	GENERAL TOLERANCE.			TITLE CABLINE® V RECE. ASS'Y	I-PEX	SHEET 1/6	REV. 34	
31	Z181269	K.H	Sept./28/'18	H.I	DWG.	H.Mashima	DATE					2003/03/07
30	Z180375	H.A	Mar./22/'18	Y.S	CHK.	Y.H	DATE					2003/03/12
29	Z160926	K.H	July/29/'16	J.T	APP.	K.K	DATE	2003/03/13	DWG. No.	20347	SIZE	A3
REVISION RECORD												

ITEMS	SPECIFICATION
APPLICABLE CABLE	MICRO COAX : AWG# 44,42,40 DISCRETE : AWG# 36 TWINCOAX : AWG# 40
RATING VOLTAGE	100V AC (PER CONTACT)
RATING AMPERAGE (FOR CONTACT)	0.1A AC/DC [AWG#44] PER CONTACT / UP TO 40 CONTACTS 0.24A AC/DC [AWG#42] PER CONTACT / UP TO 40 CONTACTS 0.3A AC/DC [AWG#40] PER CONTACT / UP TO 40 CONTACTS 0.8A AC/DC [AWG#36] PER CONTACT / UP TO 12 CONTACTS ※TESTING BY A REAL MACHINE IS RECOMMENDED BECAUSE TEMPERATURE RISE MAY AFFECTED BY ACTUAL SITUATION.
OPERATING TEMPERATURE	233~358K(-40°C~+85°C)
OPERATING HUMIDITY	85% MAX.(NON-CONDENSING)
CONTACT RESISTANCE	INITIAL : 235mohm MAX.(AWG#36) / AFTER TEST : $\triangleleft$ 40mohm MAX. 560mohm MAX.(AWG#40) 650mohm MAX.(AWG#42) 1040mohm MAX.(AWG#44)
GROUND SHELL RESISTANCE	INITIAL : 50mohm MAX. / AFTER TEST : $\triangleleft$ 40mohm MAX.
INSULATION RESISTANCE	INITIAL : 1000Mohm MIN. / AFTER TEST : 500Mohm MIN.
DIELECTRIC WITHSTANDING VOLTAGE	AC250V 1min
DURABILITY	30 CYCLES
MATING FORCE (INITIAL / AFTER TEST)	10P : 20.0N MAX. 15P : 22.5N MAX. 20P : 25.0N MAX. 25P : 27.5N MAX. 30P : 30.0N MAX. 35P : 32.5N MAX. 40P : 35.0N MAX.
UNMATING FORCE (INITIAL / AFTER TEST)	10P : 4.0N MIN. 15P : 5.0N MIN. 20P : 5.5N MIN. 25P : 6.0N MIN. 30P : 7.0N MIN. 35P : 8.0N MIN. 40P : 8.5N MIN.
CABLE RETENTION FORCE	10P : 4.90N MIN. 15P : 7.35N MIN. 20P : 9.80N MIN. 25P : 12.25N MIN. 30P : 14.70N MIN. 35P : 17.15N MIN. 40P : 19.60N MIN.
COPLANARITY	0.10 MAX.
PRODUCT SPECIFICATION	P/N 20347-3**E-12R : PRS-1461
TEST REPORT	P/N 20347-3**E-12R : TR-08068
PACKING STANDARD	300-308
INSTRUCTION MANUAL	HIM-03005
ASSEMBLY MANUAL	ASM-03002
APPEARANCE CRITERIA NO.	QLS-A***

ANGLE	$\pm 2^\circ$	6 OVER 30 MAX.	$\pm 0.3$	PROJECTION 	SERIES No. R12	CUSTOMER COPY			
	6 MAX.	$\pm 0.2$	30 OVER 120 MAX.						$\pm 0.5$
GENERAL TOLERANCE.					TITLE CABLIN <sup>®</sup> V RECE. ASS'Y	SCALE	<b>I-PEX</b>		
DWG.	DATE					5:1			
CHK.						UNIT			
APP.						mm			
					DWG. No.	20347	SIZE	SHEET	REV.
						A3	2/6		34

PART NO.	POS.	B	D	E
20347-310E-12R	10	3.60	8.10	9.40
20347-315E-12R	15	5.60	10.10	11.40
20347-320E-12R	20	7.60	12.10	13.40
20347-325E-12R	25	9.60	14.10	15.40
20347-330E-12R	30	11.60	16.10	17.40
20347-335E-12R	35	13.60	18.10	19.40
20347-340E-12R	40	15.60	20.10	21.40

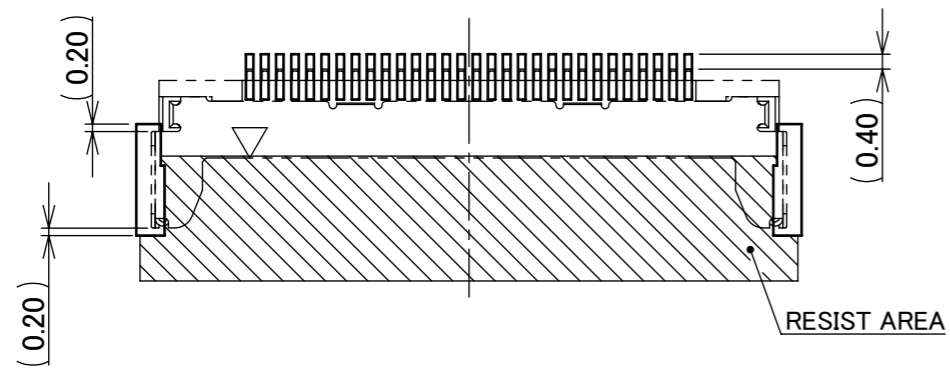


RECOMMENDED FOOT PRINT PATTERN & METALMASK LAYOUT  
 RECOMMENDED METALMASK THICKNESS :  $t=0.12$

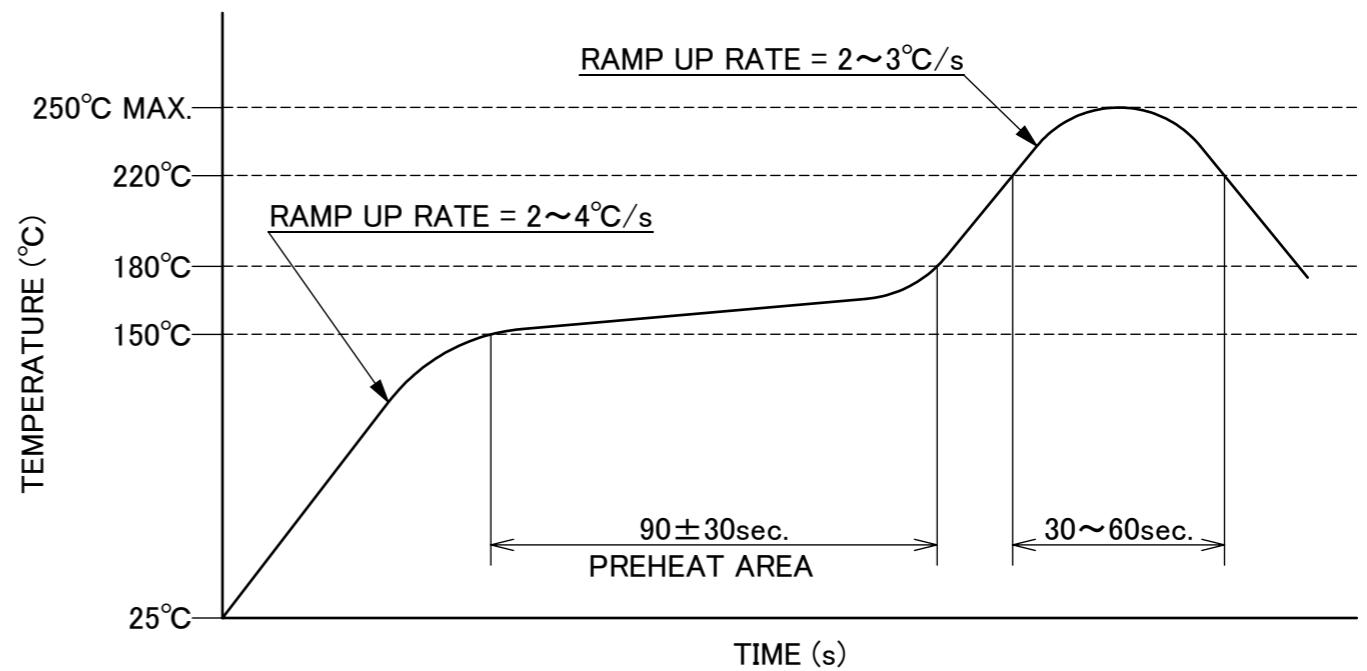
NOTES.

1. THIS AREA CANNOT MOUNT ANOTHER COMPONENTS.
2. SOLDER RESIST SHALL BE APPLIED TO PREVENT SHORT CIRCUITS WHEN PLACING SIGNAL LINES ON GROUND AREA.

ANGLE	$\pm 2^\circ$	6 OVER 30 MAX.	$\pm 0.3$	PROJECTION	SERIES No.	CUSTOMER COPY				
6 MAX.	$\pm 0.2$	30 OVER 120 MAX.	$\pm 0.5$		R12	SCALE	<b>I-PEX</b>			
GENERAL TOLERANCE.						TITLE				5:1
DWG.	DATE			CABLIN <sup>®</sup> V RECE. ASS'Y		UNIT				
CHK.						mm	SIZE	SHEET	REV.	
APP.				DWG. No. 20347		A3	3/6	34		



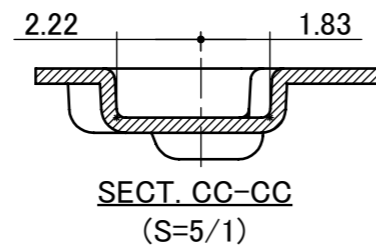
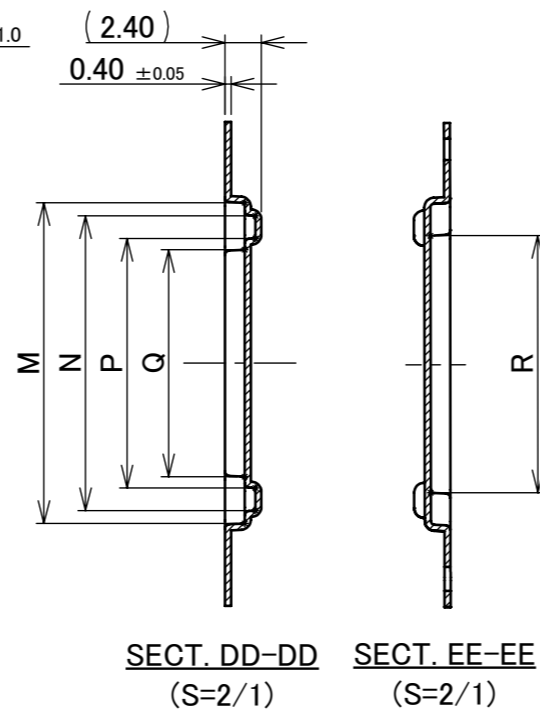
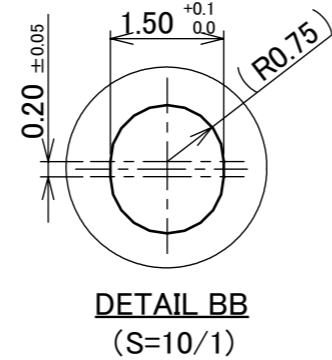
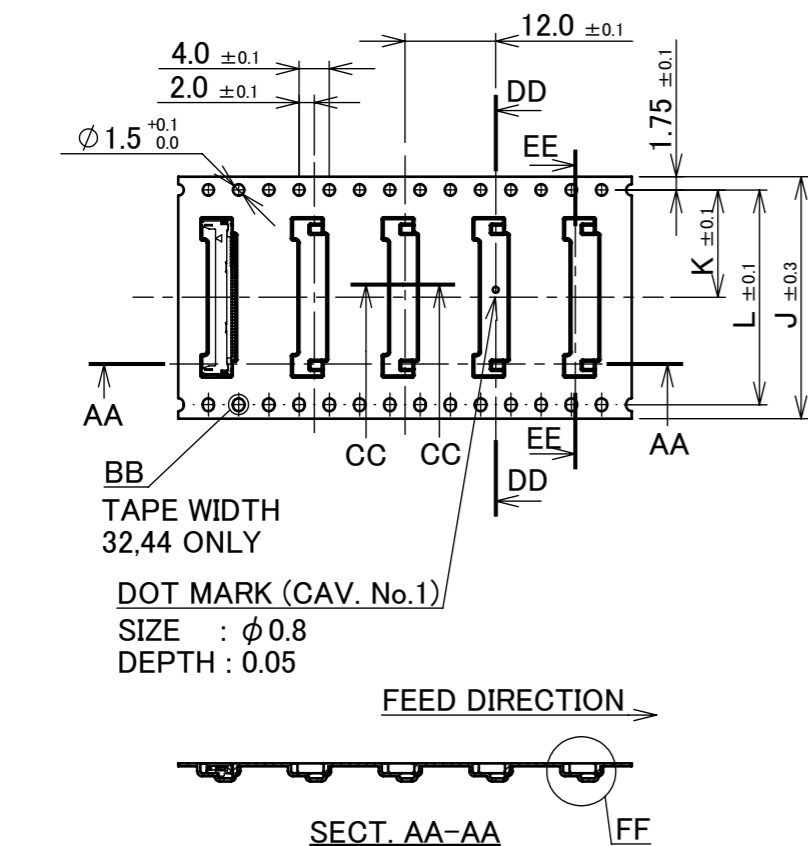
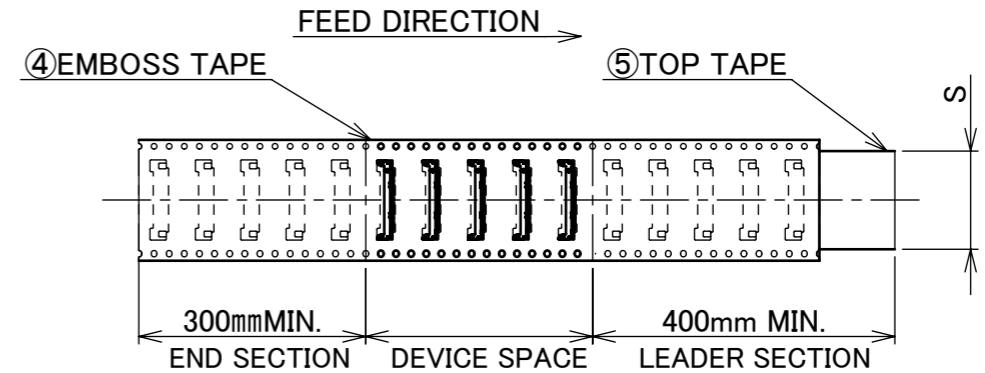
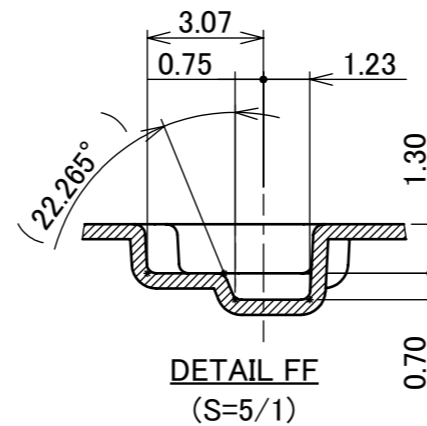
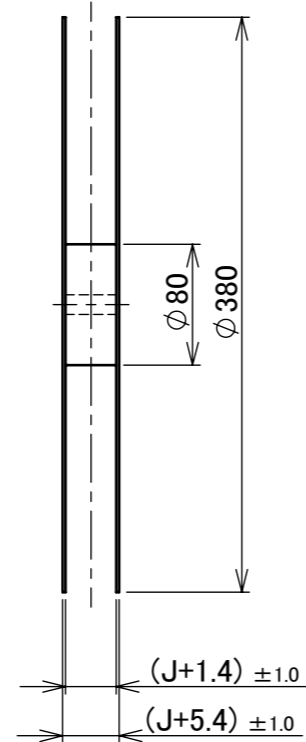
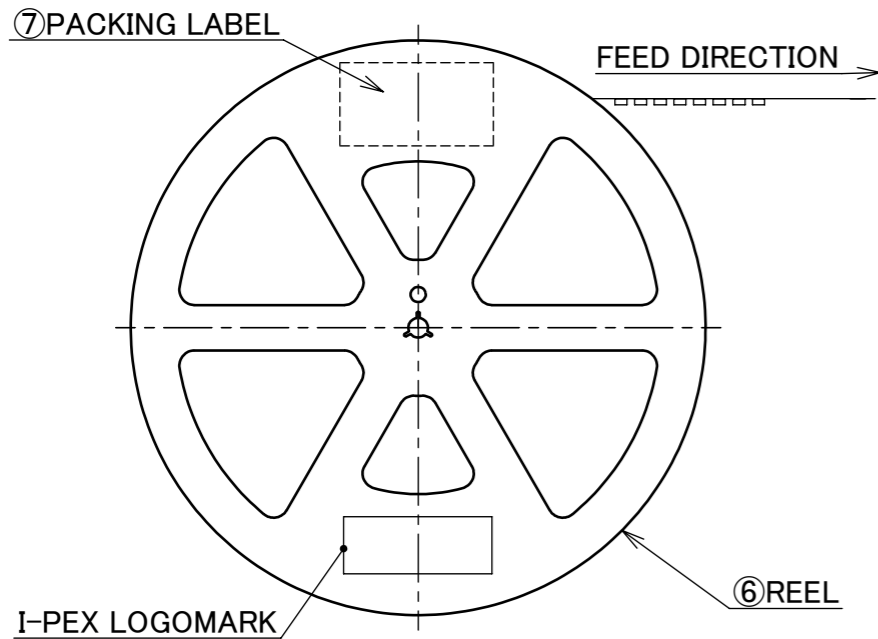
CONNECTOR ON RECOMMENDED FOOT PRINT PATTERN



REFLOW TEMPERATURE PROFILE  
 SENJU METAL INDUSTRY CO., LTD. : M705-SHF(Sn96.5 Ag3.0 Cu0.5)

ANGLE	±2°	6 OVER 30 MAX.	±0.3	PROJECTION 	SERIES No. R12	CUSTOMER COPY		
6 MAX.	±0.2	30 OVER 120 MAX.	±0.5					
GENERAL TOLERANCE.				TITLE CABLIN <sup>®</sup> V RECE. ASS'Y	SCALE 5:1			
DWG.	DATE							
CHK.								
APP.								
				DWG. No.	20347	SIZE	SHEET	REV.
						A3	4/6	34

PART NO.	J	K	L	M	N	P	Q	R	S	QTY. PER EMBOSS REEL (PIECES / REEL)	QTY. PER PACKING CARTON (REELS / CARTON)	TOP TAPE TYPE
20347-310E-12R	16.0	7.5	-	9.2	7.5	4.5	3.0	5.0	13.5	2000 PIECES / REEL	7 REELS / CARTON =14000	HEAT SEALING TYPE
20347-315E-12R	24.0	11.5	-	11.2	9.5	6.5	5.0	7.0	21.5		5 REELS / CARTON =10000	
20347-325E-12R	24.0	11.5	-	15.2	13.5	10.5	9.0	11.0	21.5			
20347-330E-12R	24.0	11.5	-	17.2	15.5	12.5	11.0	13.0	21.5			
20347-335E-12R	32.0	14.2	28.4	19.2	17.5	14.5	13.0	15.0	26.0			
20347-340E-12R	32.0	14.2	28.4	21.2	19.5	16.5	15.0	17.0	26.0		4 REELS / CARTON = 8000	

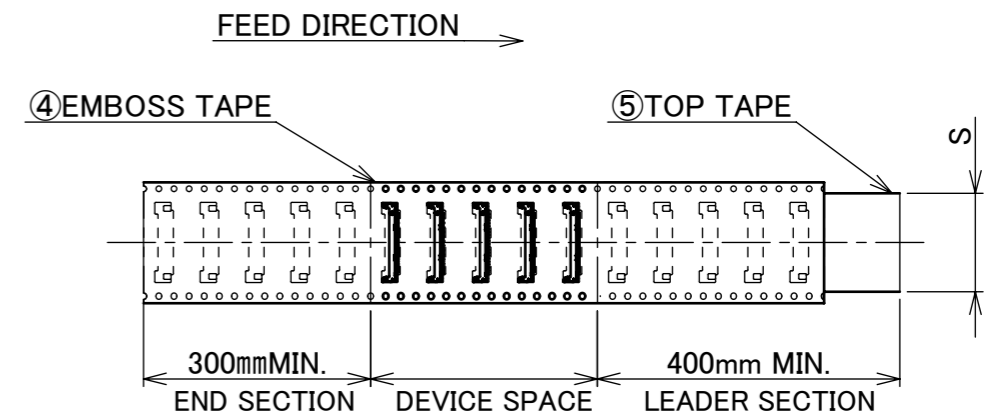
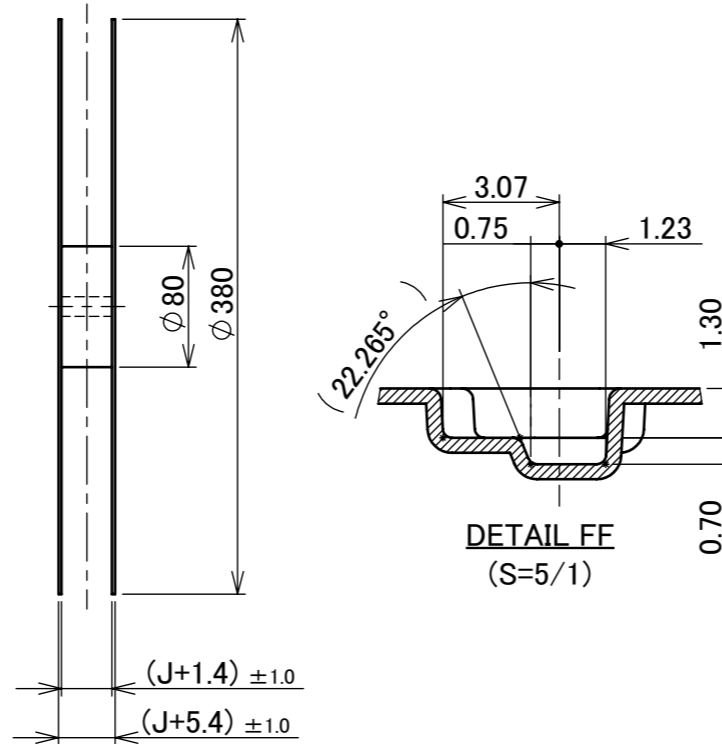
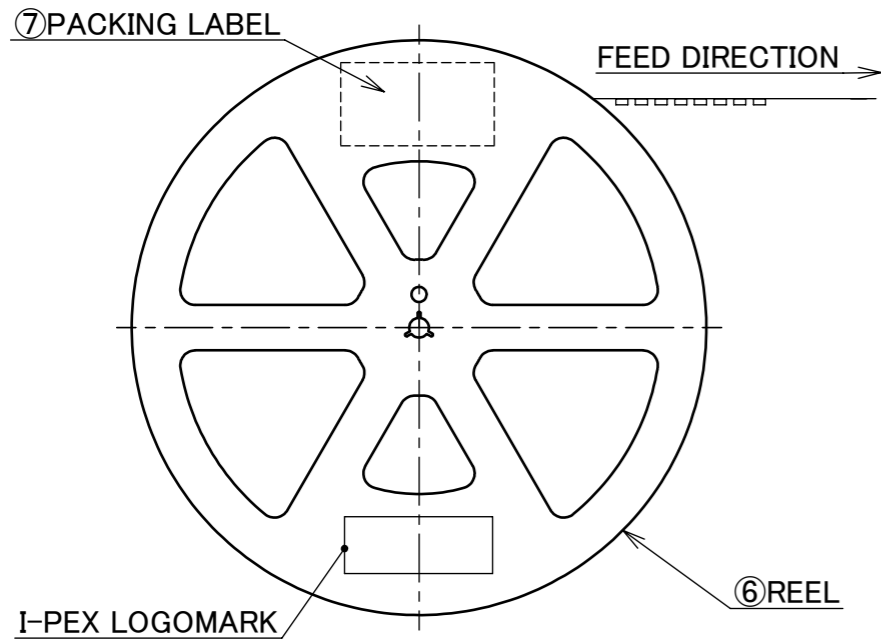


- NOTES.
- TAPING SPECIFICATION FOLLOWS JIS C 0806 (IEC 60286-3).
  - MAKE EMPTY SECTION OF LEADER AND END ON EACH END OF THE TAPE.
  - TOP TAPE SHALL NOT STICK OUT FROM EMBOSS TAPE.
  - TOP TAPE SHALL NOT COVER FEED HOLE.

NO.	DISCRIPTION	MATERIAL	FINISH , REMARKS
7	PACKING LABEL	-	-
6	REEL	PS	-
5	TOP TAPE	PET t=0.062 TRANSPARENCY	NON ANTISTATIC TYPE
4	EMBOSS TAPE	PS t=0.3 TRANSPARENCY	NON ANTISTATIC TYPE

ANGLE	±2°	6 OVER 30 MAX.	±0.3	PROJECTION	SERIES No.	CUSTOMER COPY			
6 MAX.	±0.2	30 OVER 120 MAX.	±0.5		R12	SCALE			
GENERAL TOLERANCE.						TITLE CABLIN <sup>®</sup> V RECE. ASS'Y	5:1		
DWG.	DATE						UNIT	I-PEX	
CHK.							mm		
APP.							DWG. No.	SIZE	SHEET
						20347	A3	5/6	34

PART NO.	J	K	L	M	N	P	Q	R	S	QTY. PER EMBOSS REEL (PIECES / REEL)	QTY. PER PACKING CARTON (REELS / CARTON)	TOP TAPE TYPE
20347-320E-12R	24.0	11.5	-	13.2	11.5	8.5	7.0	9.0	21.3	2000 PIECES / REEL	5 REELS / CARTON = 10000	ADHESIVE TYPE
20347-325E-12R	24.0	11.5	-	15.2	13.5	10.5	9.0	11.0	21.3			
20347-330E-12R	24.0	11.5	-	17.2	15.5	12.5	11.0	13.0	21.3			
20347-335E-12R	32.0	14.2	28.4	19.2	17.5	14.5	13.0	15.0	25.5		4 REELS / CARTON = 8000	
20347-340E-12R	32.0	14.2	28.4	21.2	19.5	16.5	15.0	17.0	37.4		3 REELS / CARTON = 6000	



- NOTES.  
5. TAPING SPECIFICATION FOLLOWS JIS C 0806 (IEC 60286-3).  
6. MAKE EMPTY SECTION OF LEADER AND END ON EACH END OF THE TAPE.  
7. TOP TAPE SHALL NOT STICK OUT FROM EMBOSS TAPE.  
8. TOP TAPE SHALL NOT COVER FEED HOLE.

NO.	DISCRIPTION	MATERIAL	FINISH , REMARKS
7	PACKING LABEL	-	-
6	REEL	PS	-
5	TOP TAPE	PET t=0.062 TRANSPARENCY	ANTISTATIC TYPE
4	EMBOSS TAPE	PS t=0.3 TRANSPARENCY	ANTISTATIC TYPE

ANGLE	±2°	6 OVER 30 MAX.	±0.3	PROJECTION	SERIES No.	CUSTOMER COPY
6 MAX.	±0.2	30 OVER 120 MAX.	±0.5		R12	
GENERAL TOLERANCE.				TITLE	SCALE	<b>I-PEX</b>
DWG.	DATE	CABLIN <sup>®</sup> V RECE. ASS'Y		5:1		
CHK.				DWG. No.	UNIT	
APP.				20347	mm	
				SIZE	SHEET	REV.
				A3	6/6	34

