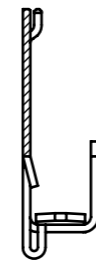
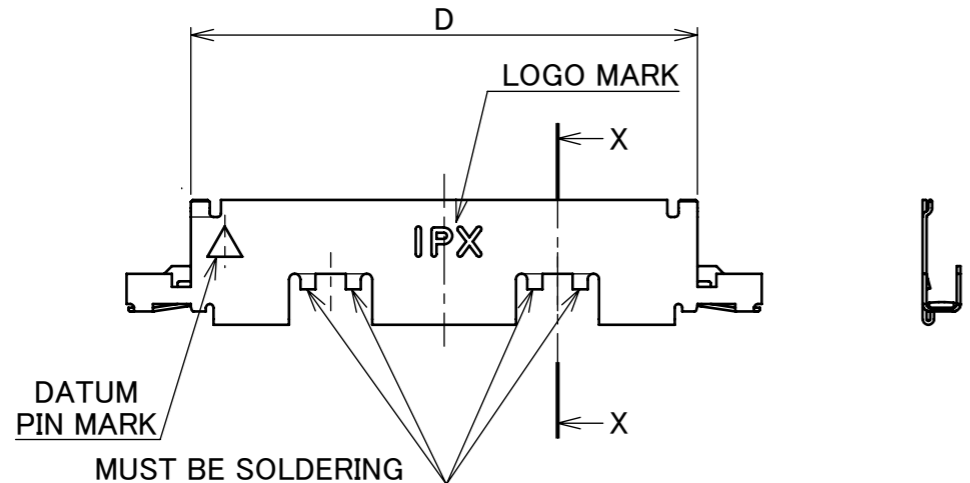
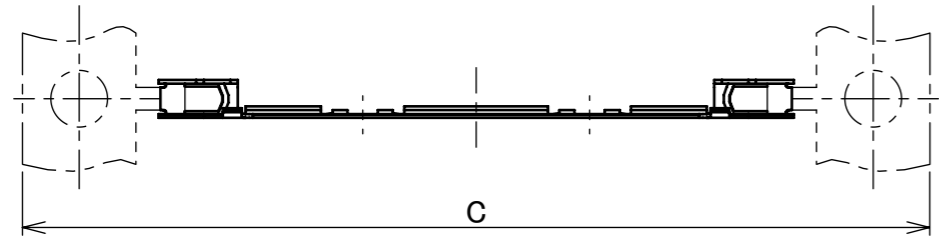
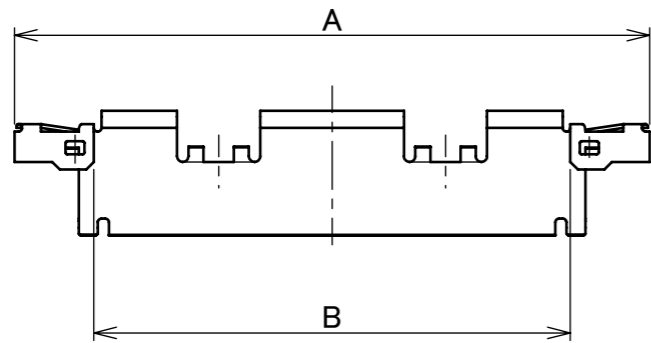
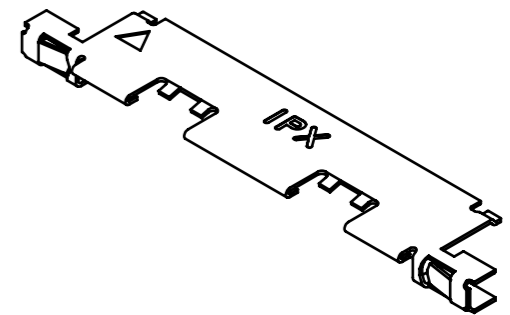


Recommended P/N 2047-0**3

PART NO.	A	B	C	D
2047-0103	8.8	4.6	19.5	5.4
2047-0153	10.8	6.6	19.5	7.4
2047-0203	12.8	8.6	19.5	9.4
2047-0253	14.8	10.6	27.5	11.4
2047-0303	16.8	12.6	27.5	13.4
2047-0353	18.8	14.6	27.5	15.4
2047-0403	20.8	16.6	27.5	17.4

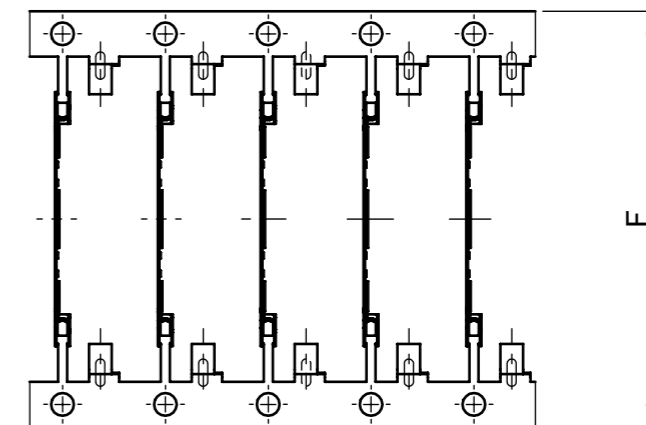
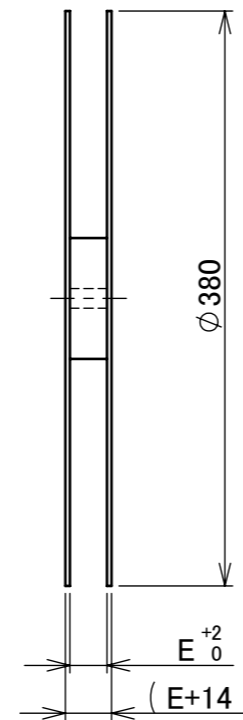
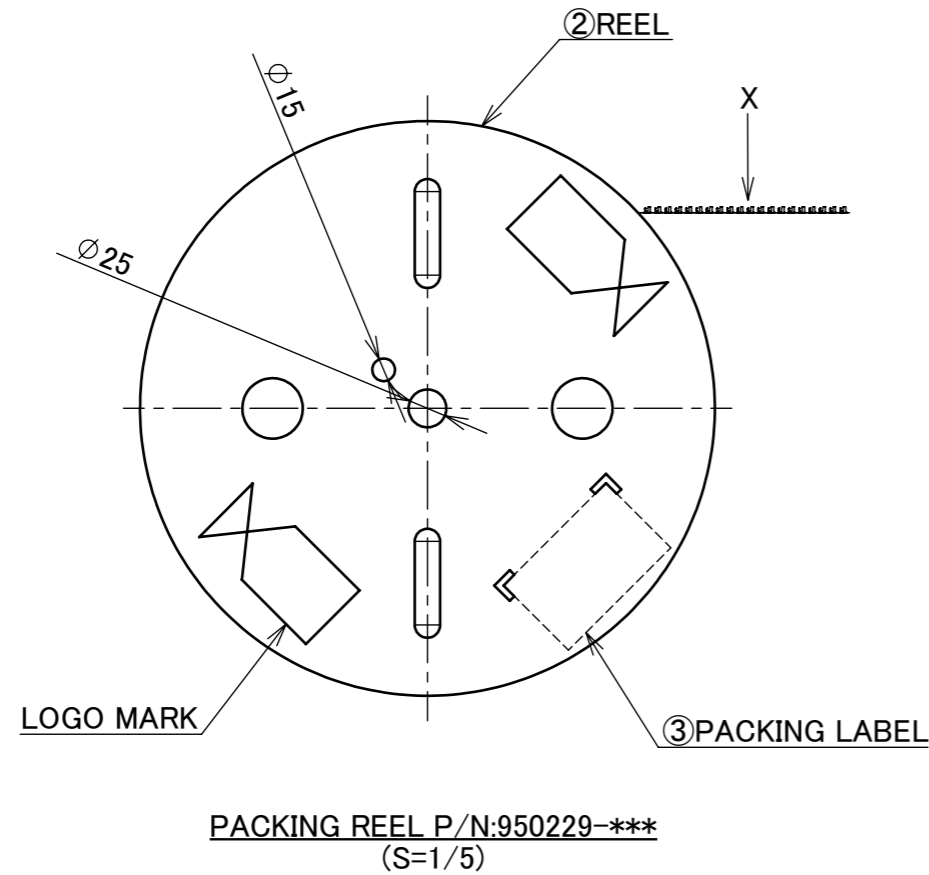


SECT. X-X
(S=10/1)

NO.	DISCRIPTION	MATERIAL	FINISH , REMARKS
1	SHELL A	SUS	Sn 1.00 μm MIN. OVER Ni 0.50 μm MIN.

REV.	ECN	BY	DATE	APP.	APP.	DATE	DWG. No.	SIZE	SHEET	REV.	
21	Z210585	A.K	June/07/'21	H.I	ANGLE	±2°	6 OVER 30 MAX.	±0.3	PROJECTION SERIES No. R4 TITLE CABLINE® V PLUG SHELL-A SCALE 5:1 UNIT mm SHEET 1/2 REV. 21 CUSTOMER COPY I-PEX		
20	Z191452	A.K	Nov./06/'19	H.I	6 MAX.	±0.2	30 OVER 120 MAX.	±0.5			
19	Z191210	A.K	Sept./12/'19	H.I	GENERAL TOLERANCE.						
18	Z181269	K.H	Sept./28/'18	H.I	DWG.	H.Mashima	DATE	2003/03/07			
17	Z150343	H.M	Nov./27/'15	E.K	CHK.	Y.H	DATE	2003/03/12			
16	Z141092	H.M	Nov./19/'14	E.K	APP.	K.Katabuchi	DATE	2003/03/13			
REVISION RECORD								2047	A3	1/2	21

PART NO.	E	F	QTY. PER EMBOSS REEL (PIECES / REEL)	QTY. PER PACKING CARTON (REELS / CARTON)	PACKING STANDARD
2047-0103	25.0	19.5	2000 PIECES / REEL	4 REELS / CARTON = 8000	300-307
2047-0153					
2047-0203					
2047-0253	30.0	27.5		3 REELS / CARTON = 6000	
2047-0303					
2047-0353					
2047-0403					



VIEW X
(S=2/1)
FEED DIRECTION →

NO.	DISCRIPTION	MATERIAL	FINISH , REMARKS
3	PACKING LABEL	-	-
2	REEL	CARDBOARD	-

ANGLE	±2°	6 OVER 30 MAX.	±0.3	PROJECTION	SERIES No.	CUSTOMER COPY			
6 MAX.	±0.2	30 OVER 120 MAX.	±0.5		R4	<div style="text-align: center; font-size: 2em; font-weight: bold;">I-PEX</div>			
GENERAL TOLERANCE.				TITLE					SCALE
DWG.	DATE			CABLIN [®] V PLUG SHELL-A					5:1
CHK.									UNIT
APP.				DWG. No.		mm	SIZE	SHEET	REV.
				2047		A3	2/2	21	