

Recommended P/N 20533-0**E

PART NO.	Pos.	A	B	C	D	E
20533-030E-**	30	11.20	7.50	8.00	10.11	1.60
20533-034E-**	34	12.20	8.50	8.00	11.11	2.10
20533-040E-**	40	13.70	10.00	10.00	12.61	1.85
20533-050E-**	50	16.20	12.50	12.00	15.11	2.10

20533-0**E-**
SEE TABLE.1
Pos.

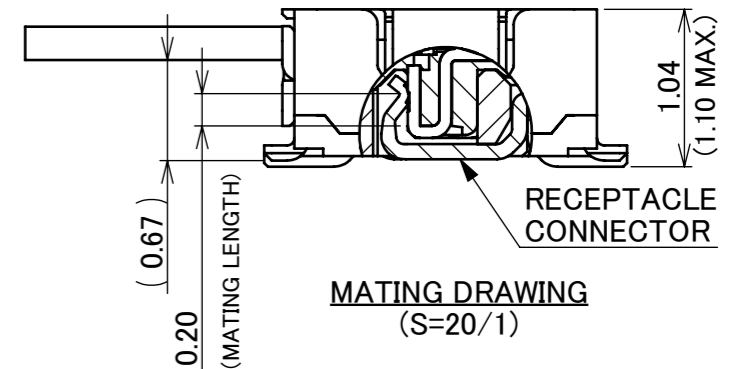
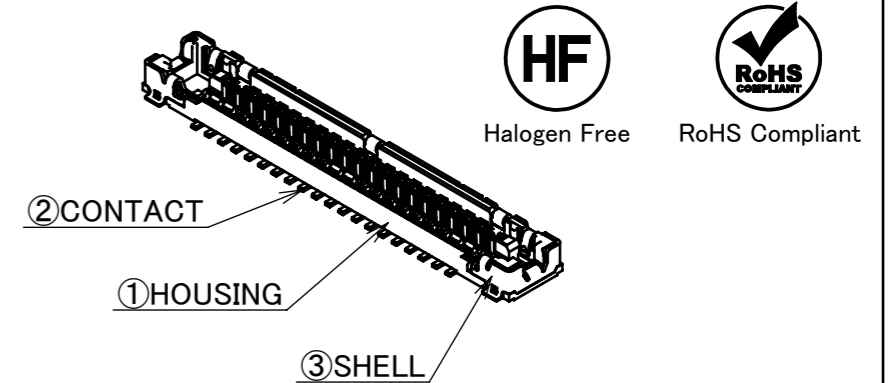
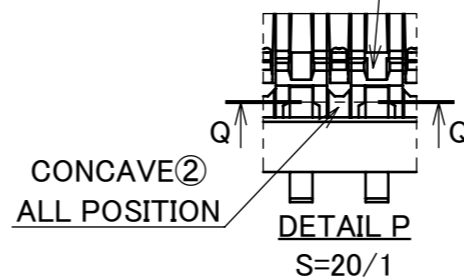
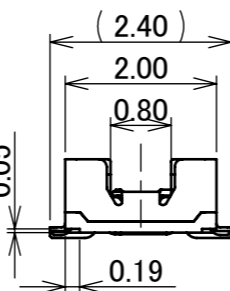
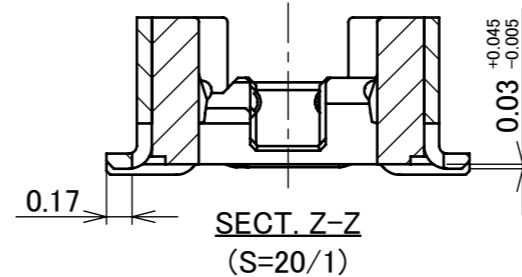
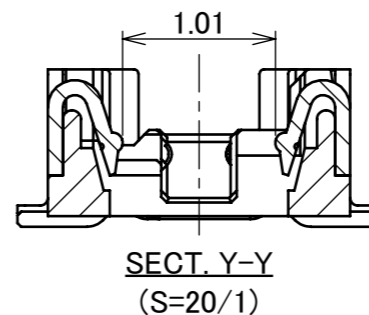
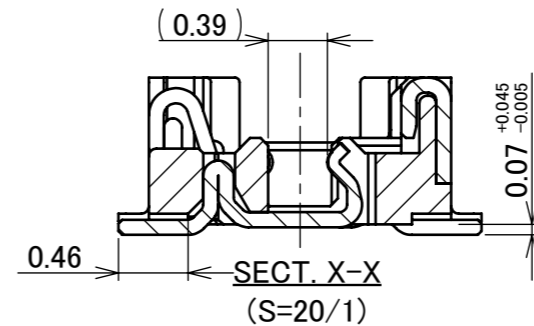
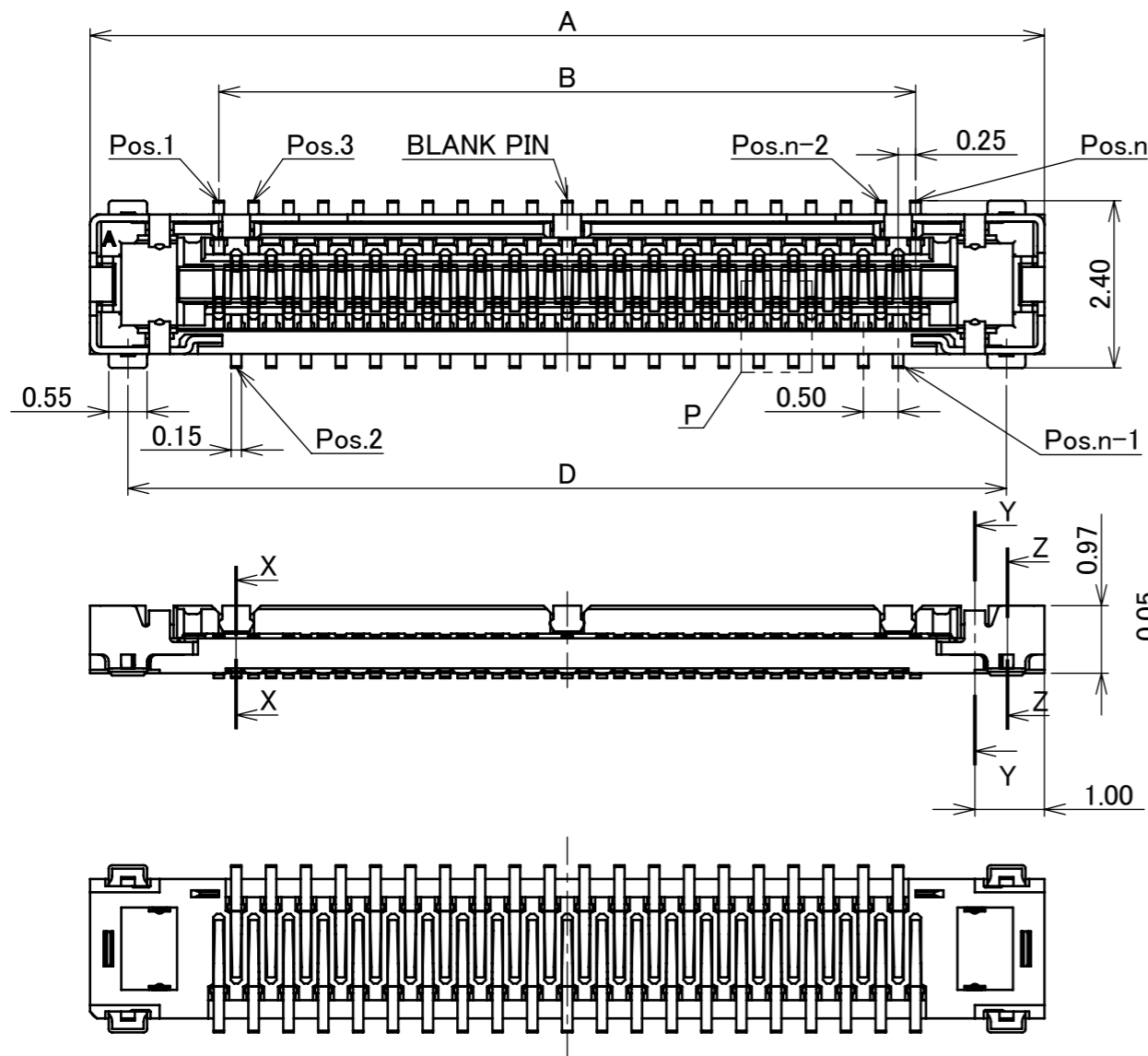


TABLE.2

POSITION OF CONCAVE①

30P	: 2, 6, 8, 12, BLANK PIN, 19, 23, 25, 29 pos. (9 POSITIONS)
34P	: 4, 8, 10, 14, BLANK PIN, 21, 25, 27, 31 pos. (9 POSITIONS)
40P	: 6, 8, 12, 14, 18, 23, 25, 29, 33, 35 pos. (10 POSITIONS)
50P	: 6, 8, 12, 14, 18, 22, BLANK PIN, 29, 33, 37, 39, 43, 45 pos. (13 POSITIONS)

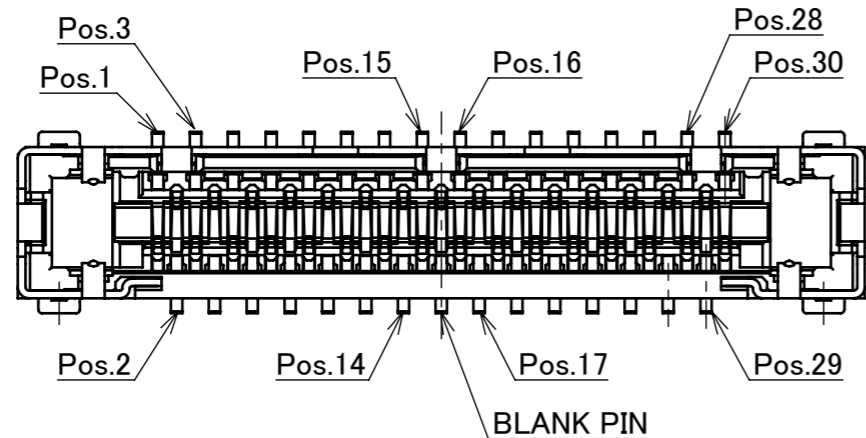
TABLE.1

PART NO.	CONTACT MATERIAL
20533-0**E	PHOSPHOR BRONZE
20533-0**E-01	CORSON ALLOY

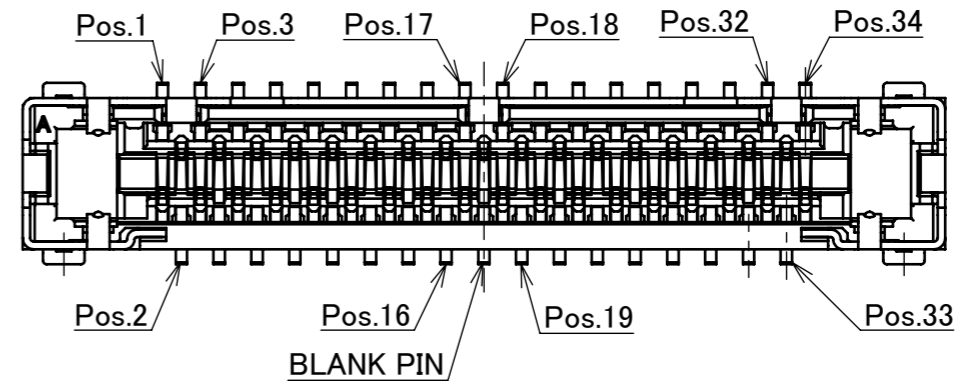
NO.	DISCRIPTION	MATERIAL	FINISH , REMARKS
4	VACUUM CLIP	LCP	UL94V-0, BEIGE
3	SHELL	PHOSPHOR BRONZE	Au 0.02 μm MIN. OVER Ni 1.00 μm MIN.
2	COTANCT	SEE ABOVE TABLE.1	CONTACT AREA : Au 0.1 μm MIN. OVER Ni 1.00 μm MIN. SOLDERING AREA : Au 0.05 μm MIN. OVER Ni 1.00 μm MIN.
1	HOUSING	LCP	UL94-0, BLACK

REV.	ECN	BY	DATE	APP.	APP.	CHK.	DATE	PROJECTION	SERIES No.	TITLE	SCALE	SHEET	REV.
14	Z221348	A.K	2022/12/02	H.I	ANGLE	±2°	6 OVER 30 MAX.	±0.3	R7	CABLINER® -UX II RECEPTACLE ASSEMBLY	10:1	1/7	14
13	Z190765	A.K	2019/06/07	H.I	6 MAX.	±0.2	30 OVER 120 MAX.	±0.5			mm		
12	Z190729	A.K	2019/05/31	Y.S	GENERAL TOLERANCE.								
11	Z180877	A.K	2018/09/24	H.I	DWG.	M.Takemoto		2010/07/08					
10	Z170849	R.H	2017/08/21	M.T	DATE								
9	Z161437	R.H	2016/11/15	Tom	CHK.								
REV.	ECN	BY	DATE	APP.	APP.								
REVISION RECORD					E.Kawabe	2010/07/12		DWG. No.	20533	SIZE	A3		

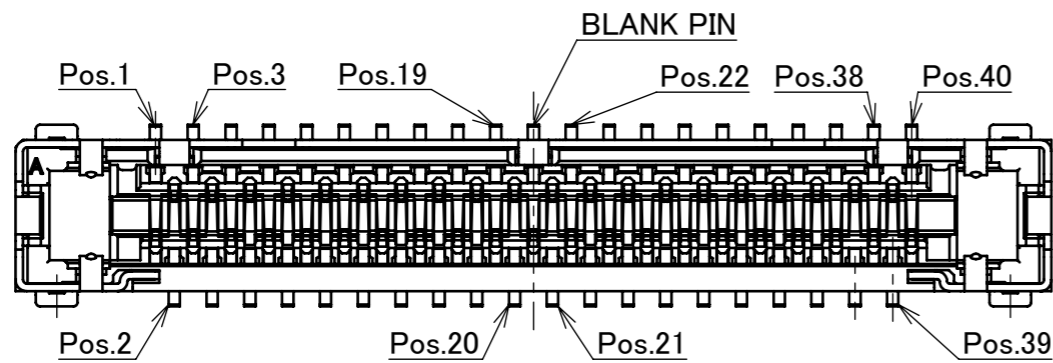
PART No.	Pos
20533-030E-**-**	30
20533-034E-**-**	34
20533-040E-**-**	40
20533-050E-**-**	50



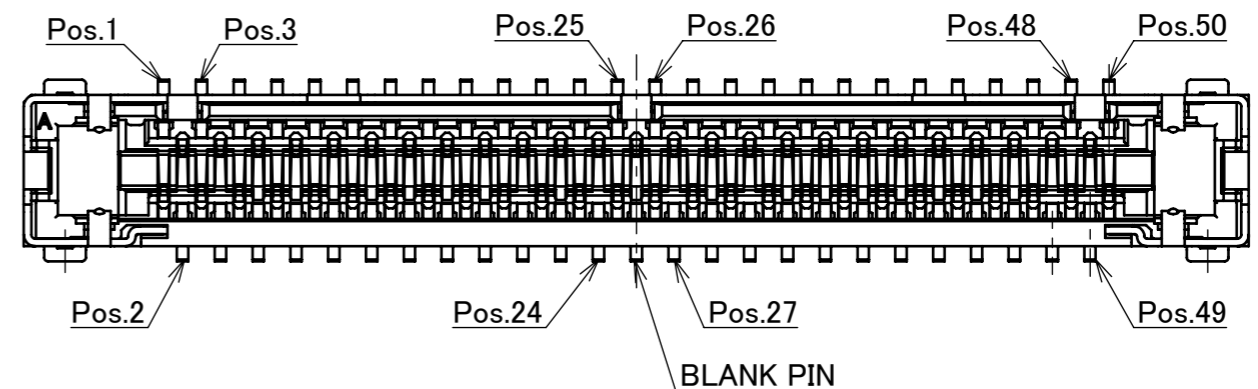
30P CONTACT LAYOUT
(S=10/1)



34P CONTACT LAYOUT
(S=10/1)



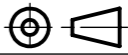
40P CONTACT LAYOUT
(S=10/1)



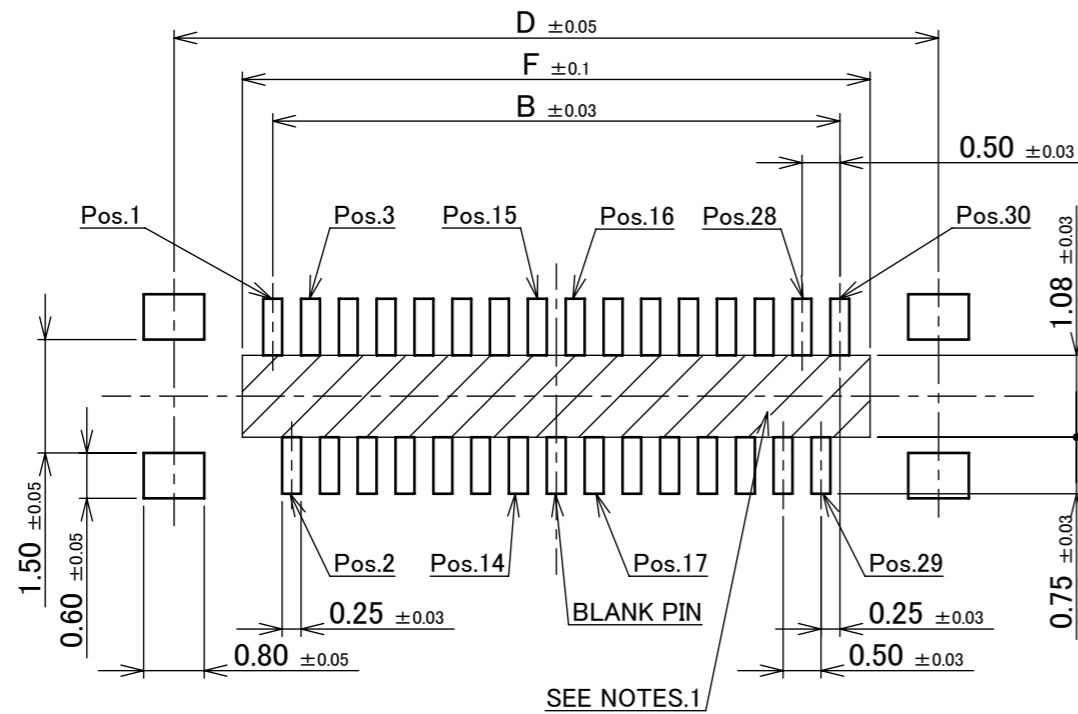
50P CONTACT LAYOUT
(S=10/1)

ANGLE	±2°	6 OVER 30 MAX.	±0.3	PROJECTION ⊕	SERIES No. R7	CUSTOMER COPY		
6 MAX.	±0.2	30 OVER 120 MAX.	±0.5					
GENERAL TOLERANCE.				TITLE CABLIN [®] -UX II RECEPTACLE ASSEMBLY	SCALE	I-PEX		
DWG.	DATE				10:1			
CHK.					UNIT			
APP.					mm			
				DWG. No.	20533	SIZE	SHEET	REV.
						A3	2/7	14

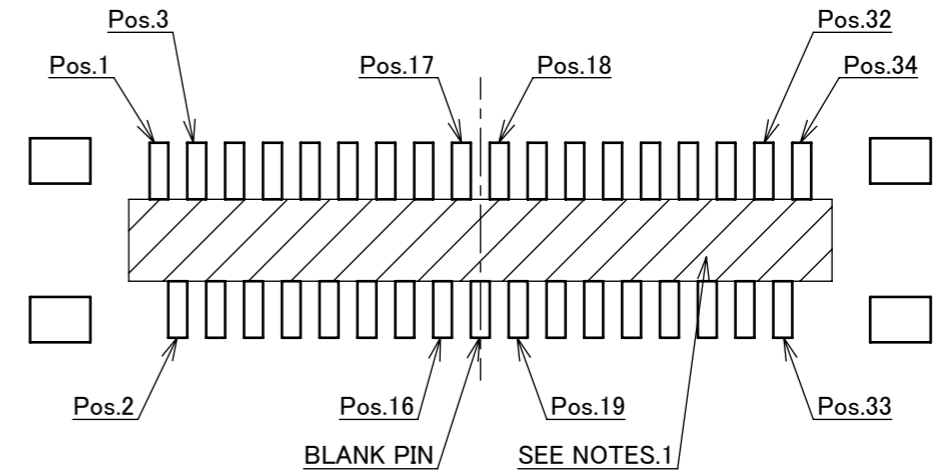
ITEMS	SPECIFICATION
APPLICABLE CABLE	MICRO COAX : AWG# 44 ,46 DISCRETE : AWG#39
RATING VOLTAGE	50V AC (PER CONTACT)
RATING AMPERAGE (FOR CONTACT)	CONTACT MATERIAL : PHOSPHOR BRONZE (PLUG : 20531-0**T-02 ,RECEPTACLE : 20533-0**E) 0.50A AC/DC [AWG#39] (PER CONTACT / UP TO 6 CONTACTS) 0.15A AC/DC [AWG#44] 0.10A AC/DC [AWG#46] CONTACT MATERIAL : CORSON ALLOY (PLUG : 20531-0**T-12 ,RECEPTACLE : 20533-0**E-01) 0.50A AC/DC [AWG#39] (PER CONTACT / UP TO 8 CONTACTS) 0.19A AC/DC [AWG#44] 0.14A AC/DC [AWG#46]
OPERATING TEMPERATURE	233~358K(-40°C~+85°C)
OPERATING HUMIDITY	75% MAX.(NON-CONDENSING)
CONTACT RESISTANCE	INITIAL : 450mohm MAX.(AWG#39) 1080mohm MAX.(AWG#44) 1880mohm MAX.(AWG#46) AFTER TEST : \triangle 40mohm MAX.
GROUND SHELL RESISTANCE	INITIAL : 100mohm MAX. / AFTER TEST : \triangle 40mohm MAX.
INSULATION RESISTANCE	INITIAL : 100Mohm MIN. / AFTER TEST : 100Mohm MIN.
DIELECTRIC WITHSTANDING VOLTAGE	AC100V 1min
DURABILITY	20 CYCLES
MATING FORCE (INITIAL / AFTER TEST)	30P : 26.4N MAX. 34P : 27.6N MAX. 40P : 29.4N MAX. 50P : 32.4N MAX.
UNMATING FORCE (INITIAL / AFTER TEST)	30P : 1.5N MIN. 34P : 1.9N MIN. 40P : 2.5N MIN. 50P : 3.5N MIN.
CABLE RETENTION FORCE	30P : 15.0N MIN. 34P : 17.0N MIN. 40P : 20.0N MIN. 50P : 25.0N MIN.
COPLANARITY	0.10mm MAX.
PRODUCT SPECIFICATION	PRS-1555
TEST REPORT	TR-10051
INSTRUCTION MANUAL	HIM-10001
PACKING STANDARD	300-874
APPEARANCE CRITERIA No.	QLS-A***

ANGLE	$\pm 2^\circ$	6 OVER 30 MAX.	± 0.3	PROJECTION 	SERIES No. R7	CUSTOMER COPY		
	6 MAX.	± 0.2	30 OVER 120 MAX.					
GENERAL TOLERANCE.				TITLE CABLINER [®] -UX II RECEPTACLE ASSEMBLY	SCALE 5:1 UNIT mm	I-PEX		
DWG.	DATE							
CHK.								
APP.								
	DWG. No.	20533		SIZE A3	SHEET 3/7	REV. 14		

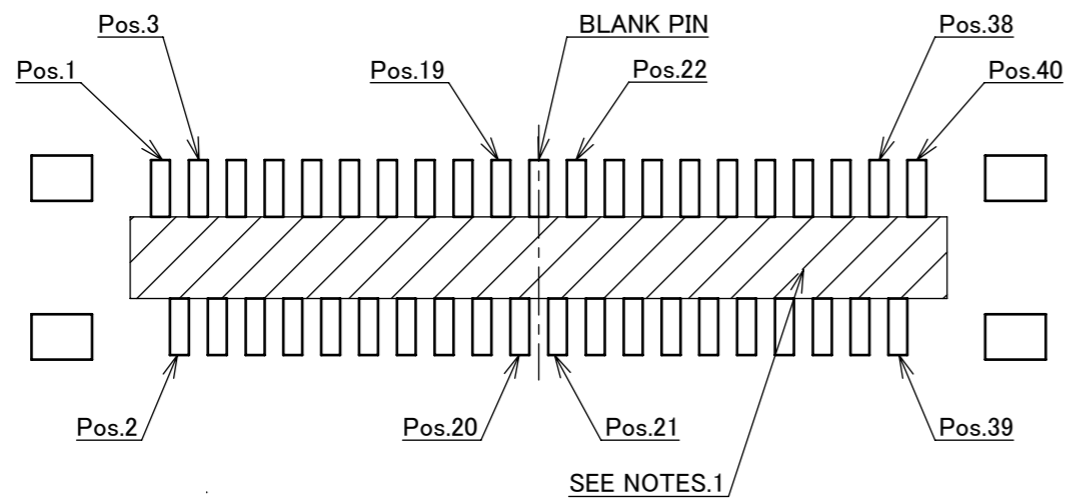
PART No.	Pos	B	D	F
20533-030E-**-**	30	7.50	10.11	8.30
20533-034E-**-**	34	8.50	11.11	9.30
20533-040E-**-**	40	10.00	12.61	10.80
20533-050E-**-**	50	12.50	15.11	13.30



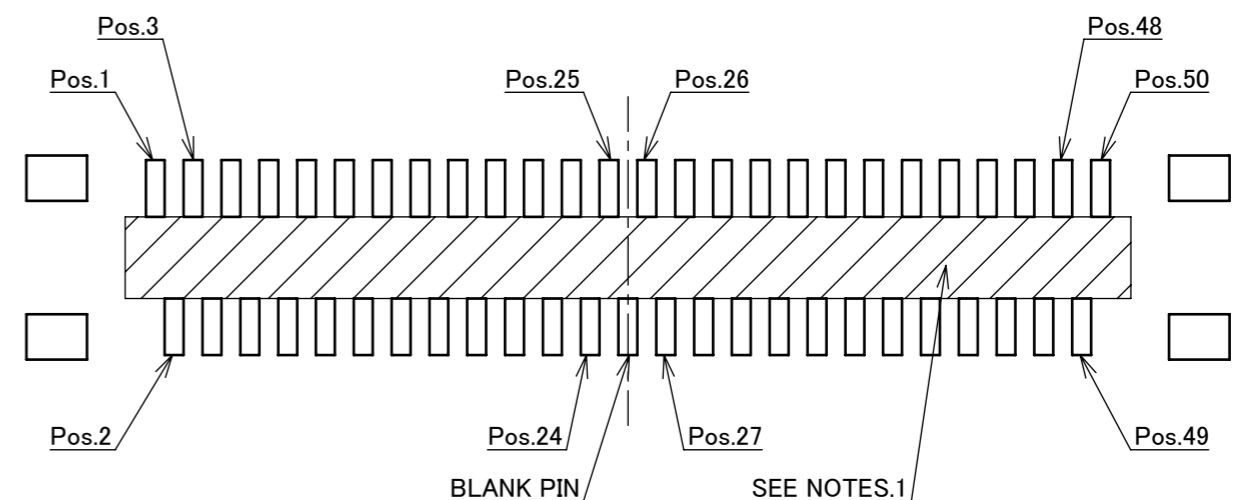
30P RECOMMENDED FOOTPRINT PATTERN LAYOUT



34P RECOMMENDED FOOTPRINT PATTERN LAYOUT



40P RECOMMENDED FOOTPRINT PATTERN LAYOUT

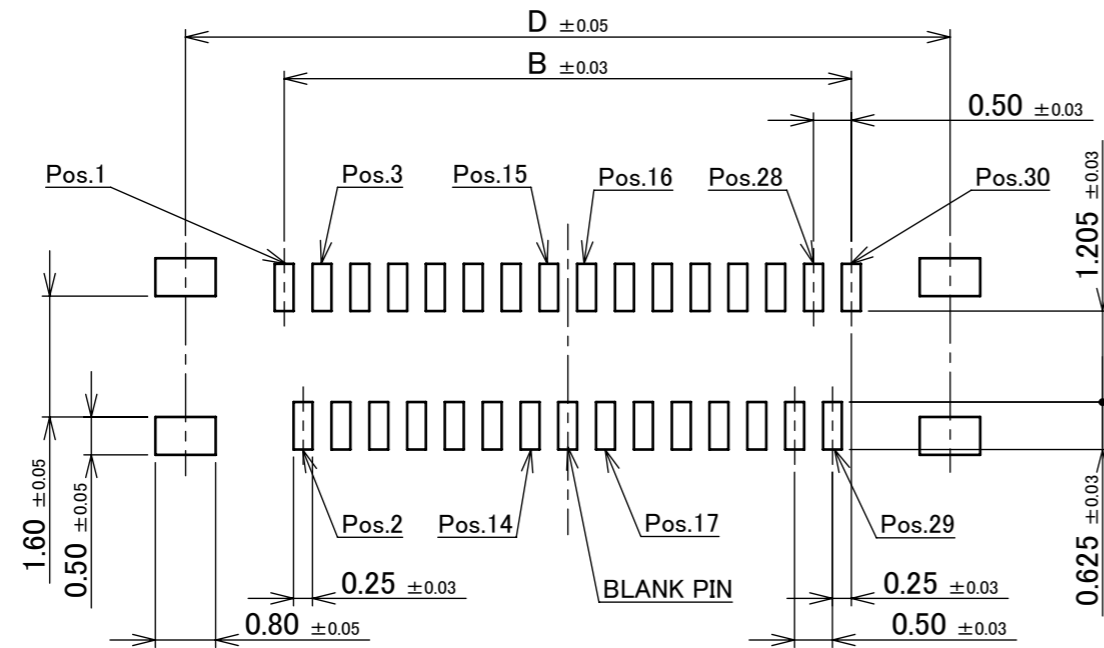


50P RECOMMENDED FOOTPRINT PATTERN LAYOUT

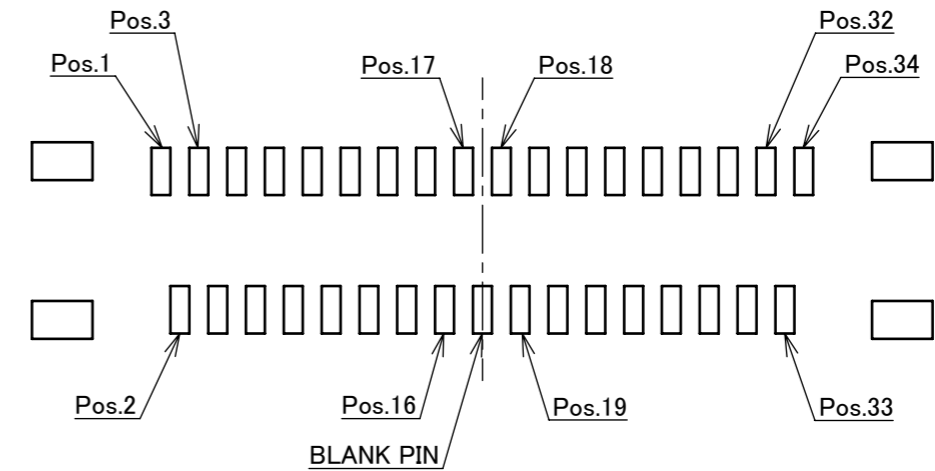
NOTES:
1. SOLDER RESIST SHALL BE APPLIED TO PREVENT SHORT CIRCUITS WHEN PLACING SIGNAL LINES ON GROUND AREA.

ANGLE	$\pm 2^\circ$	6 OVER 30 MAX.	± 0.3	PROJECTION	SERIES No.	CUSTOMER COPY	
6 MAX.	± 0.2	30 OVER 120 MAX.	± 0.5		R7		
GENERAL TOLERANCE.				TITLE	SCALE	I-PEX	
DWG.	DATE			CABLIN [®] -UX II RECEPTACLE ASSEMBLY	10:1		
CHK.					UNIT		
APP.					mm		
				DWG. No.	SIZE	SHEET	REV.
				20533	A3	4/7	14

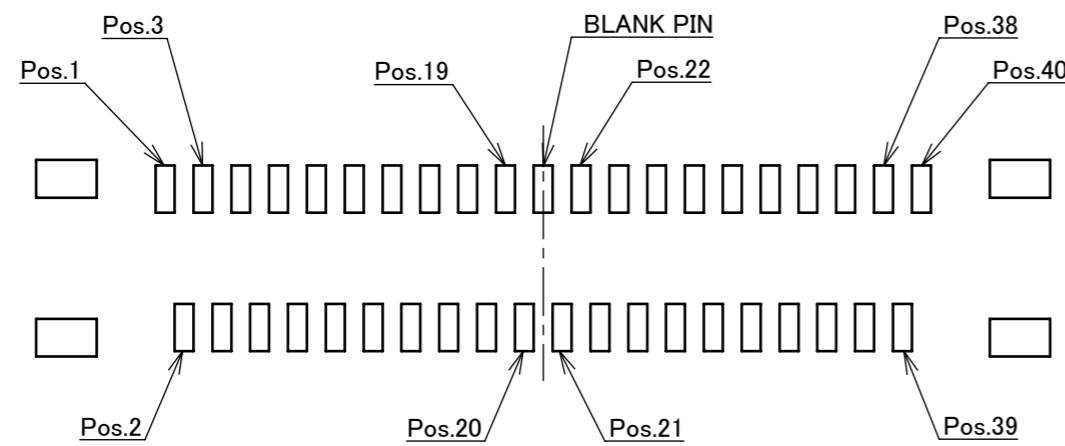
PART No.	Pos	B	D
20533-030E-**-**	30	7.50	10.11
20533-034E-**-**	34	8.50	11.11
20533-040E-**-**	40	10.00	12.61
20533-050E-**-**	50	12.50	15.11



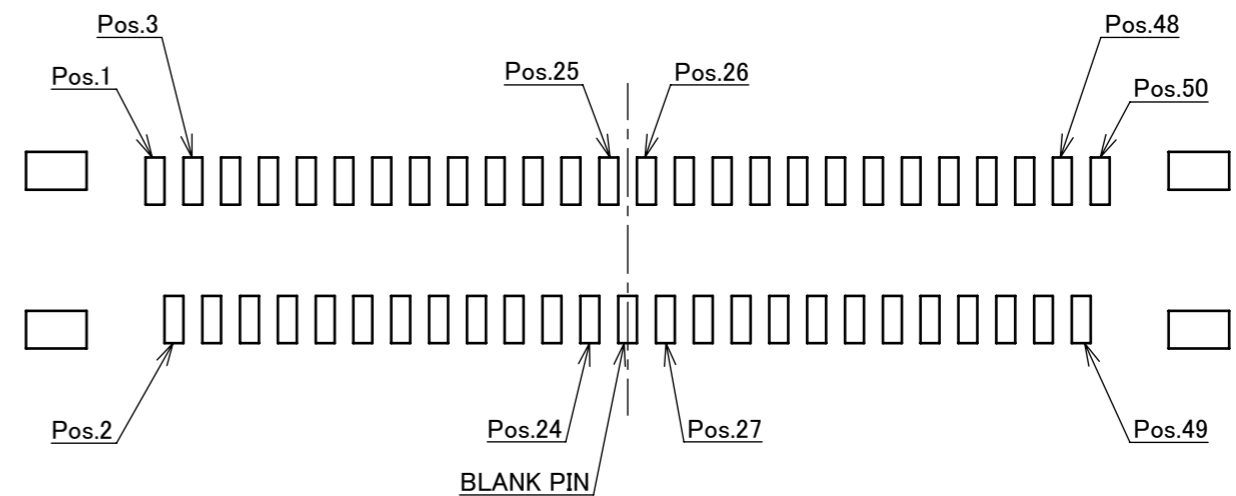
30P RECOMMENDED METAL MASK LAYOUT
METAL MASK THICKNESS : $t=0.12\text{mm}$



34P RECOMMENDED METAL MASK LAYOUT
METAL MASK THICKNESS : $t=0.12\text{mm}$

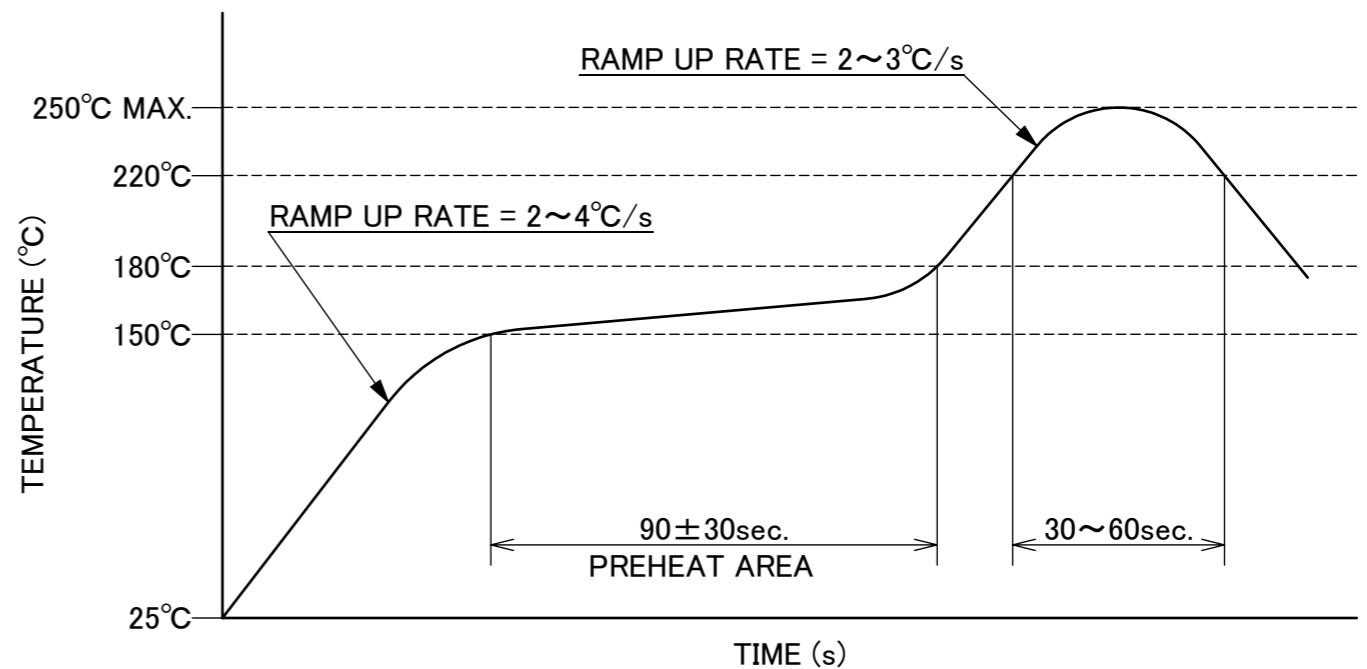
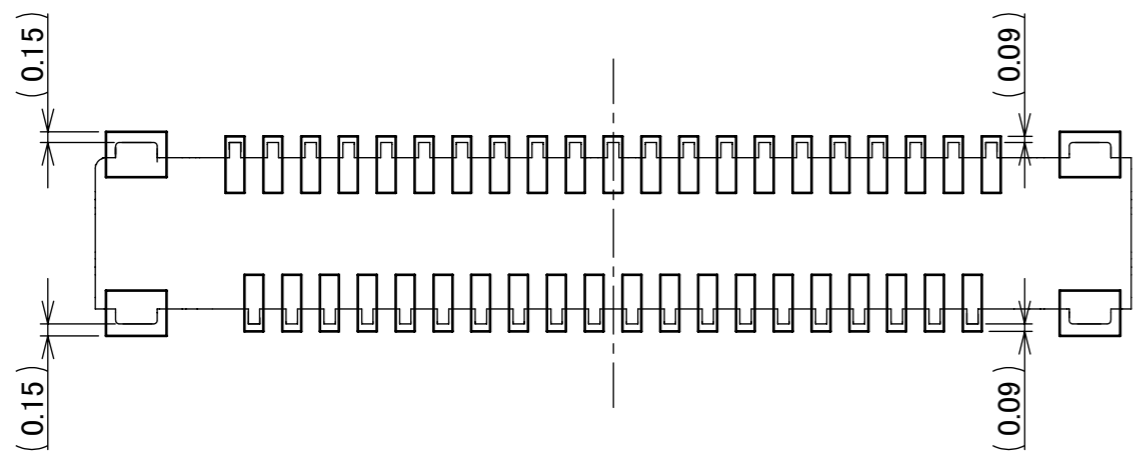


40P RECOMMENDED METAL MASK LAYOUT
METAL MASK THICKNESS : $t=0.12\text{mm}$



50P RECOMMENDED METAL MASK LAYOUT
METAL MASK THICKNESS : $t=0.12\text{mm}$

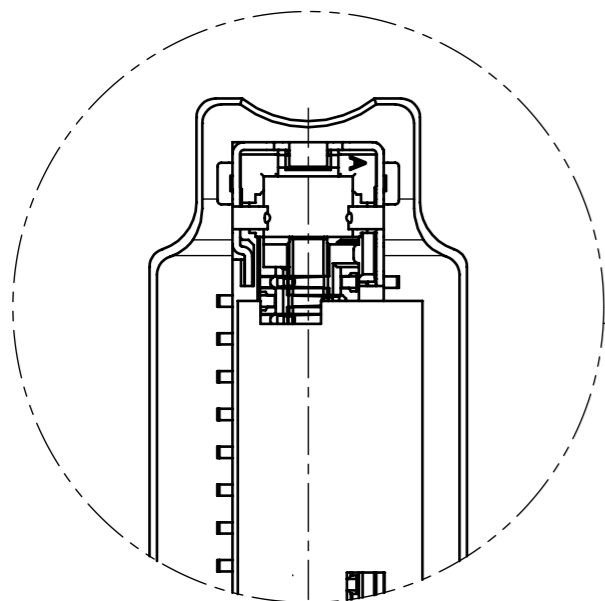
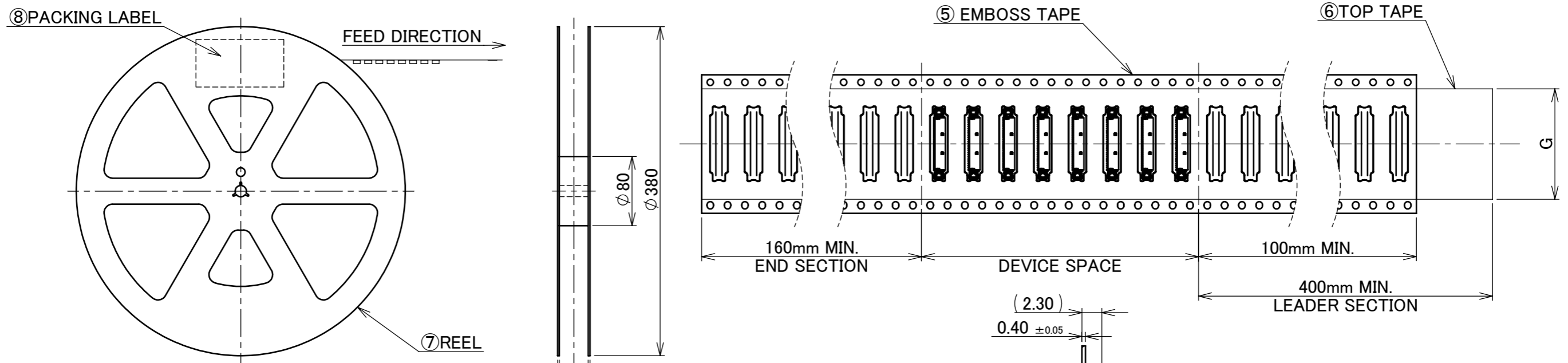
ANGLE	$\pm 2^\circ$	6 OVER 30 MAX.	± 0.3	PROJECTION 	SERIES No. R7	CUSTOMER COPY		
6 MAX.	± 0.2	30 OVER 120 MAX.	± 0.5					
GENERAL TOLERANCE.				TITLE CABLIN [®] -UX II RECEPTACLE ASSEMBLY	SCALE 10:1 UNIT mm	I-PEX		
DWG.	DATE							
CHK.								
APP.								
				DWG. No.	20533	SIZE A3	SHEET 5/7	REV. 14



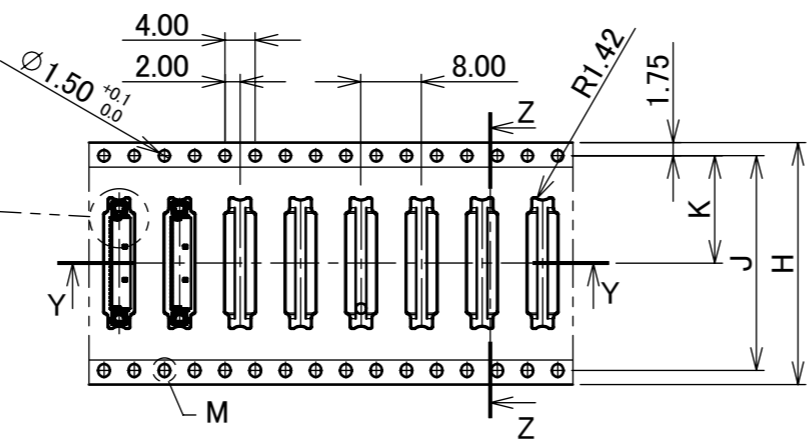
REFLOW TEMPERATURE PROFILE
 SENJU METAL INDUSTRY CO., LTD. : M705-SHF(Sn96.5 Ag3.0 Cu0.5)

ANGLE	±2°	6 OVER 30 MAX.	±0.3	PROJECTION 	SERIES No. R7	CUSTOMER COPY		
6 MAX.	±0.2	30 OVER 120 MAX.	±0.5					
GENERAL TOLERANCE.				TITLE CABLINE® -UX II RECEPTACLE ASSEMBLY	SCALE 10:1	UNIT I-PEX		
DWG.	DATE							
CHK.								
APP.								
				DWG. No.	20533	SIZE A3	SHEET 6/7	REV. 14

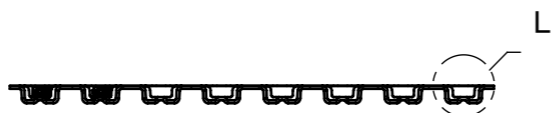
PART No.	Pos.	G	H	J	K	M	N	P	QTY. PER EMBOSS REEL (PIECES / REEL)	QTY. PER PACKING CARTON (REELS / CARTON)
20533-030E-##	30	21.3	24.0	-	11.5	12.2	11.6	9.7	5000 / REEL	4 REELS / CARTON = 20000
20533-034E-##	34	21.3	24.0	-	11.5	13.2	12.6	10.7		
20533-040E-##	40	21.3	24.0	-	11.5	14.7	14.1	12.2		
20533-050E-##	50	25.5	32.0	28.4	14.2	17.2	16.6	14.7		



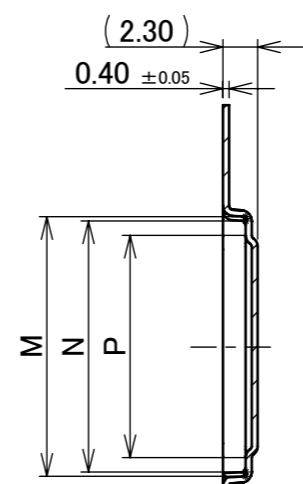
CONNECTOR DIRECTION (S=10/1)



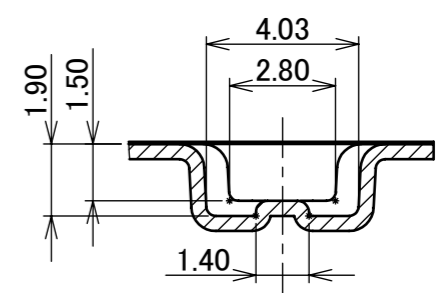
FEED DIRECTION



SECT. Y-Y



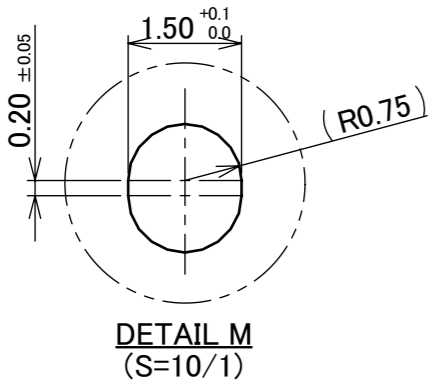
SECT. Z-Z (S=2/1)



DETAIL L (S=5/1)

NO.	DISCRIPTION	MATERIAL	FINISH , REMARKS
8	PACKING LABEL	-	-
7	REEL	PS	ANTI-STATIC TYPE BLACK
6	TOP TAPE	PET t=0.062 TRANSPARENCY	ANTI-STATIC TYPE
5	EMBOSS TAPE	PS t=0.4 TRANSPARENCY	ANTI-STATIC TYPE

- NOTES.
- TAPING SPECIFICATION FOLLOWS JIS C 0806 (IEC 60286-3).
 - MAKE EMPTY SECTION OF LEADER AND END ON EACH END OF THE TAPE.
 - TOP TAPE SHALL NOT STICK OUT FROM EMBOSS TAPE.
 - TOP TAPE SHALL NOT COVER FEED HOLE.



DETAIL M (S=10/1)

ANGLE	±2°	6 OVER 30 MAX.	±0.3	PROJECTION	SERIES No.	CUSTOMER COPY				
6 MAX.	±0.2	30 OVER 120 MAX.	±0.5		R7	SCALE	1:1			
GENERAL TOLERANCE.						TITLE	CABLINER® -UX II RECEPTACLE ASSEMBLY			
DWG.	DATE				DWG. No.	20533	UNIT	mm		
CHK.							SIZE	SHEET	7/7	REV.
APP.							14			