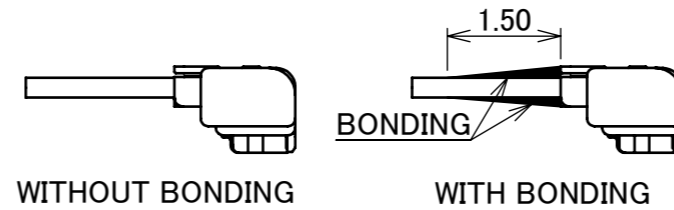
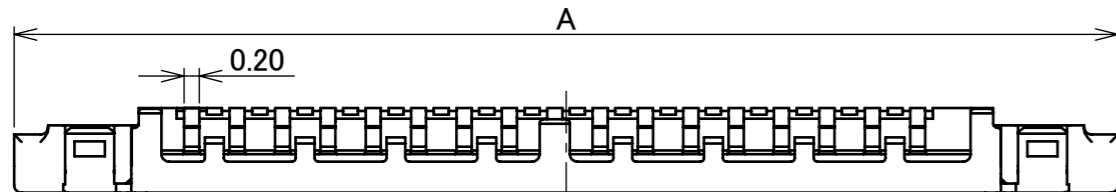


| Recommended P/N | | 20496-0**-40 | | | | |
|-----------------|------|--------------|-----|------|------|--|
| PART No. | POS. | A | B | C | D | |
| 20496-026-#0 | 26 | 12.8 | 3.6 | 8.1 | 9.6 | |
| 20496-032-#0 | 32 | 14.6 | 4.5 | 9.9 | 11.4 | |
| ◆ 20496-034-#0 | 34 | 15.2 | 4.8 | 10.5 | 12.0 | |
| 20496-040-#0 | 40 | 17.0 | 5.7 | 12.3 | 13.8 | |
| 20496-050-#0 | 50 | 20.0 | 7.2 | 15.3 | 16.8 | |

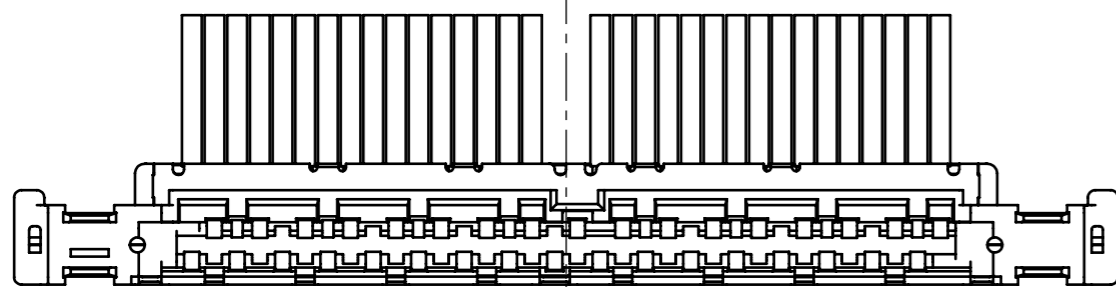
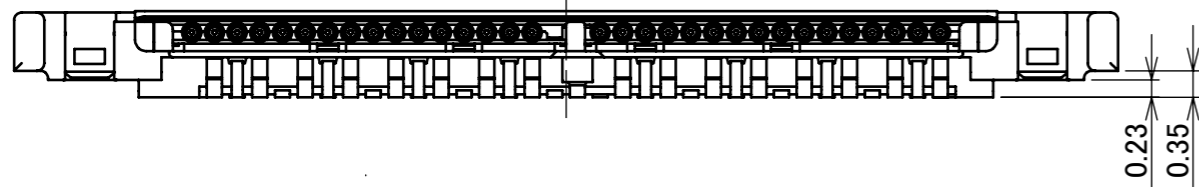
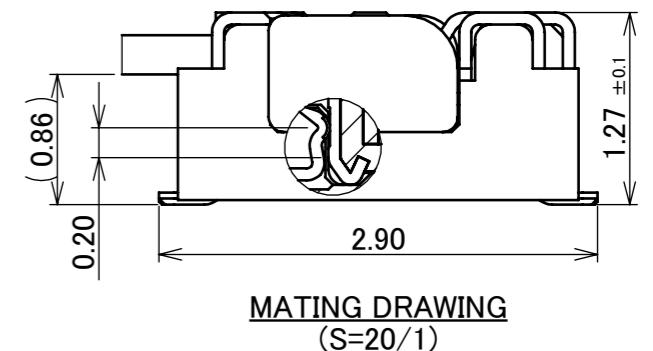
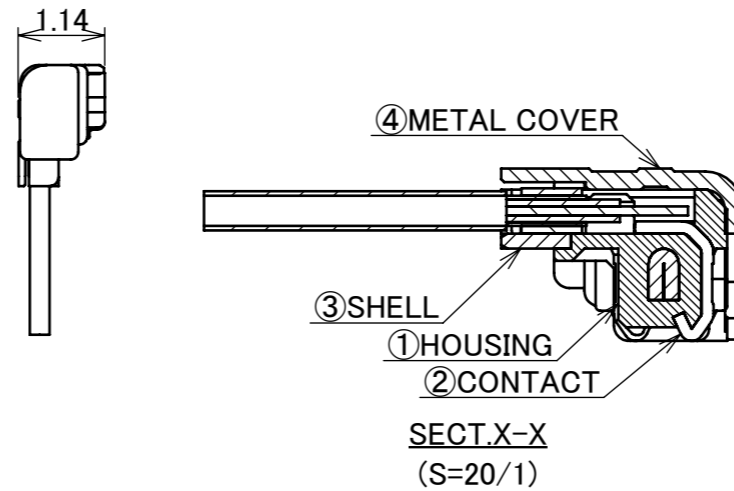
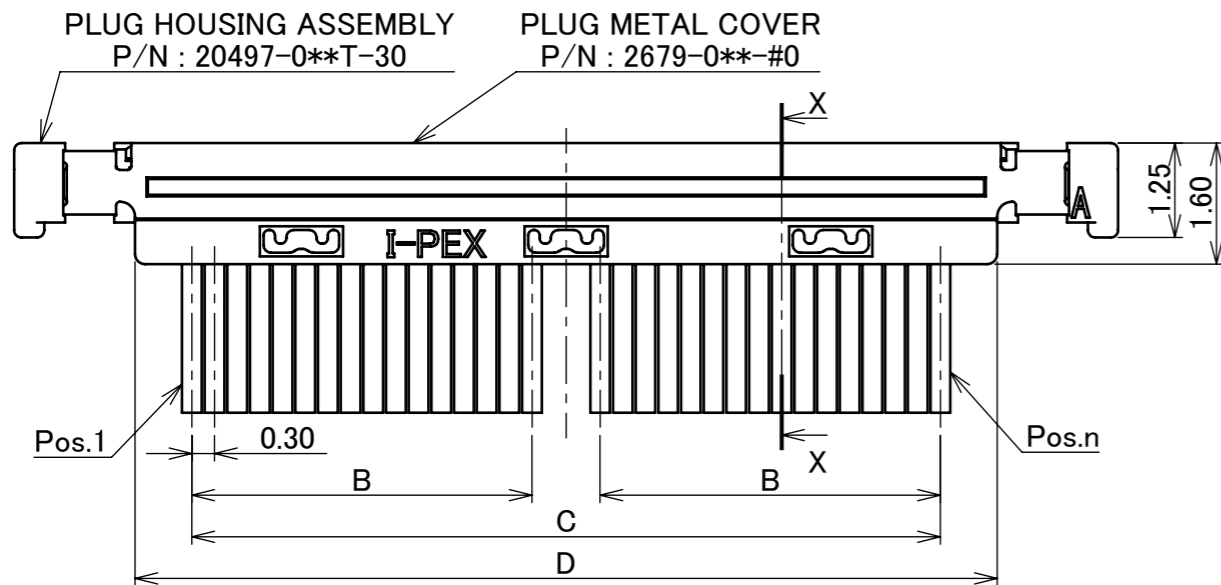
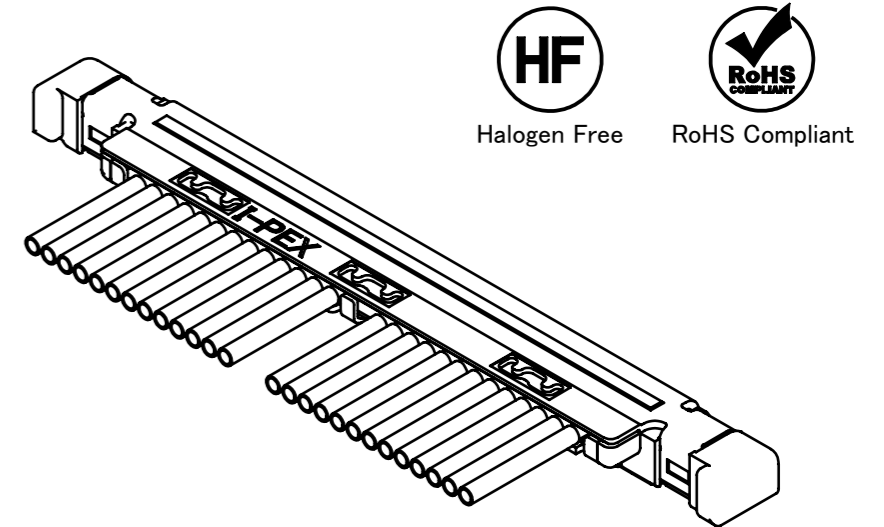
◆ MARK MEANS NOT AVAILABLE

20496-0**-#0
 3: METAL COVER Au PLATING
 4: METAL COVER Sn PLATING
 Pos.

| PART COMBINATION TABLE | | | |
|------------------------|------------------|-------------|---------------------|
| PLUG CABLE ASSEMBLY | HOUSING ASSEMBLY | METAL COVER | RECEPTACLE ASSEMBLY |
| 20496-0**-30 | 20497-0**T-30 | 2679-0**-00 | 20498-0**E-3# |
| 20496-0**-40 | | 2679-0**-10 | 20498-0**E-4# |



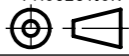
ASSEMBLY STATE
 ※WE RECOMMEND BONDING THE CABLE AND CONNECTOR TO PROTECT THE CABLE.



| NO. | DISCRIPTION | MATERIAL | FINISH , REMARKS |
|-----|-------------|-----------------|--|
| 4 | METAL COVER | STAINLESS STEEL | P/N 20496-0**-30: Au 0.05 μ m MIN. OVER Ni 1.00 μ m MIN. P/N 20496-0**-40: Sn 1.00 μ m MIN. OVER Ni 1.00 μ m MIN. |
| 3 | SHELL | PHOSPHOR BRONZE | Ni 1.00 μ m MIN. |
| 2 | CONTACT | PHOSPHOR BRONZE | Au 0.10 μ m MIN. OVER Ni 1.00 μ m MIN. |
| 1 | HOUSING | LCP | UL94V-0, BLACK |

| REV. | ECN | BY | DATE | APP. | APP. | DATE | DWG. No. | SIZE | SHEET | REV. |
|-----------------|---------|-----|------------|------|--------------------|------------|------------------|------------|-------|------|
| 17 | Z240030 | R.H | 2024/01/11 | H.I | ANGLE | ±2° | 6 OVER 30 MAX. | ±0.3 | | |
| 16 | Z220216 | S.Y | 2022/03/01 | H.I | 6 MAX. | ±0.2 | 30 OVER 120 MAX. | ±0.5 | | |
| 15 | Z200501 | S.Y | 2020/05/13 | Y.S | GENERAL TOLERANCE. | | | | | |
| 14 | Z190779 | S.Y | 2019/06/12 | H.I | DWG. | J.Ohsaka | DATE | 2008/11/04 | | |
| 13 | Z181009 | T.O | 2018/07/31 | H.I | CHK. | - | | | | |
| 12 | Z180161 | R.H | 2018/02/08 | M.T | APP. | - | | | | |
| REVISION RECORD | | | | | E.Kawabe | 2008/11/04 | 20496 | A3 | 1/4 | 17 |

| ITEMS | SPECIFICATION |
|--------------------------------------|--|
| APPLICABLE CABLE | MICRO-COAXIAL CABLE : AWG# 46 , 44 , 42 DISCRETE WIRE : AWG# 39 |
| RATING VOLTAGE | 50V AC (PER CONTACT PIN) |
| RATING AMPERAGE (FOR CONTACT) | 0.50A AC/DC [AWG#39] (PER CONTACT PIN / UP TO 10 CONTACTS) 0.15A AC/DC [AWG#46] 0.19A AC/DC [AWG#44] 0.20A AC/DC [AWG#42] |
| OPERATING TEMPERATURE | 233~358K(-40°C~+85°C) |
| OPERATING HUMIDITY | 85% MAX.(NON-CONDENSING) |
| CONTACT RESISTANCE | INITIAL : 450mohm MAX.(AWG#39) 700mohm MAX.(AWG#42) 1080mohm MAX.(AWG#44) 1880mohm MAX.(AWG#46) AFTER TEST : \triangle 40mohm MAX. |
| GROUND CONTACT RESISTANCE | INITIAL : 100mohm MAX. / AFTER TEST : \triangle 40mohm MAX. |
| INSULATION RESISTANCE | INITIAL : 100Mohm MIN. / AFTER TEST : 100Mohm MIN. |
| DIELECTRIC WITHSTANDING VOLTAGE | AC100V 1min |
| DURABILITY | 20 CYCLES |
| MATING FORCE (INITIAL / 20 CYCLES) | 26P : 28.0N MAX. 32P : 34.5N MAX. 40P : 40.0N MAX. 50P : 50.0N MAX. |
| UNMATING FORCE (INITIAL / 20 CYCLES) | 26P : 3.0N MIN. 32P : 3.0N MIN. 40P : 3.0N MIN. 50P : 3.0N MIN. |
| CABLE RETENTION FORCE | 15.0N MIN. (AWG# 44) |
| PRODUCT SPECIFICATION | PRS-1469 |
| TEST REPORT | TR-09032 |
| INSTRUCTION MANUAL | HIM-09006 |
| ASSEMBLY MANUAL | ASM-09004 |
| APPEARANCE CRITERIA No. | QLS-A*** |

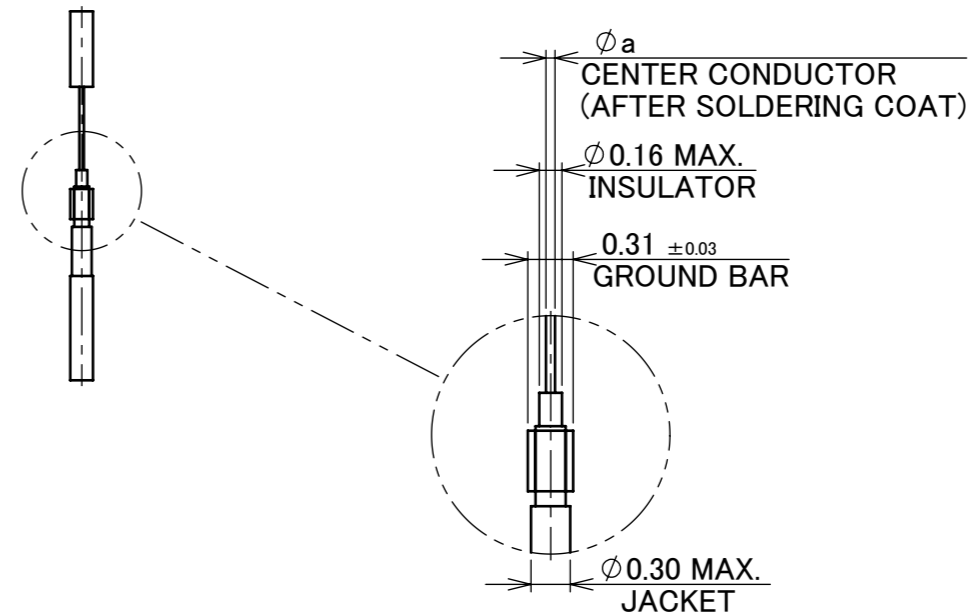
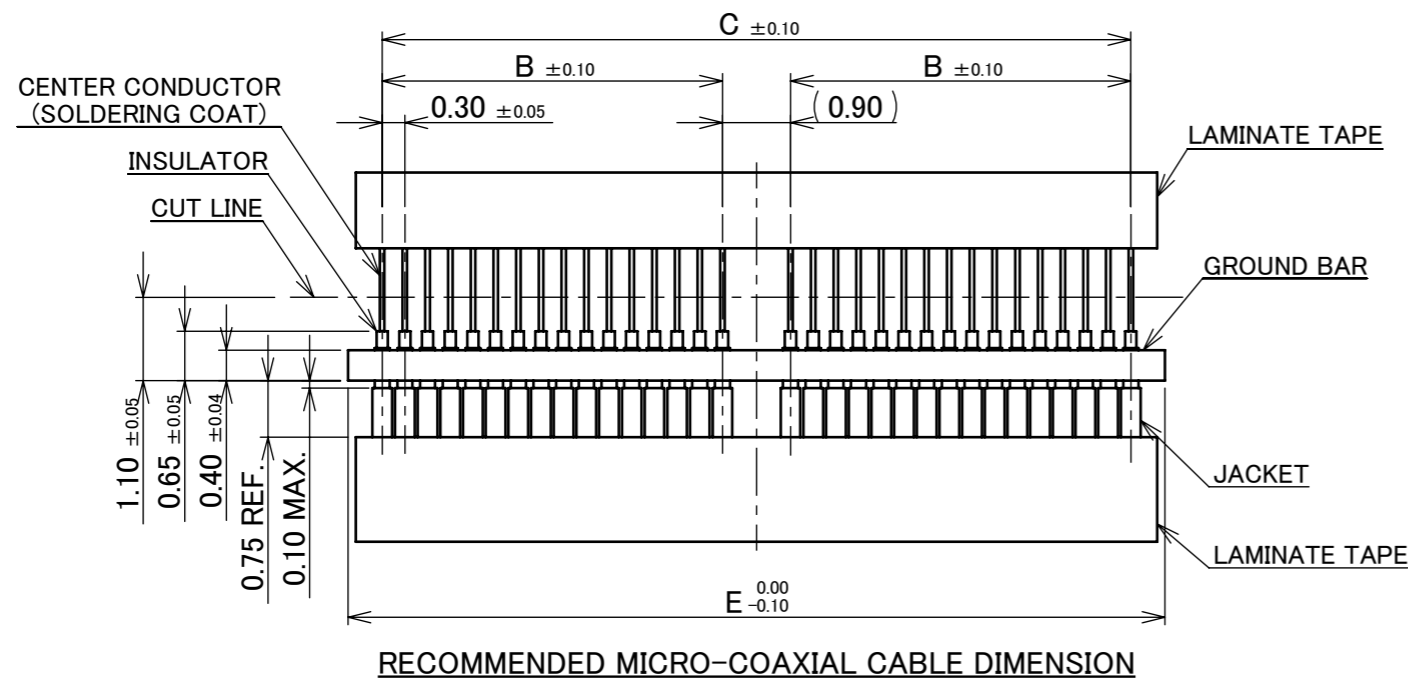
| | | | | | | | | |
|--------------------|---------------|----------------|------------------|---|--------------------|---------------|-----|-----------------|
| ANGLE | $\pm 2^\circ$ | 6 OVER 30 MAX. | ± 0.3 | PROJECTION  | SERIES No. R1R1 | CUSTOMER COPY | | |
| | 6 MAX. | ± 0.2 | 30 OVER 120 MAX. | | | | | ± 0.5 |
| GENERAL TOLERANCE. | | | | TITLE CABLIN [®] -UA II PLUG CABLE ASSEMBLY | SCALE | I-PEX | | |
| DWG. | DATE | | | | | | | UNIT |
| CHK. | | | | | | | | mm |
| APP. | | | | | | | | SIZE SHEET REV. |
| | | | | DWG. No. | 20496 | A3 | 2/4 | 17 |

| | PART No. | POS. | B | C | E |
|---|--------------|------|-----|------|------|
| | 20496-026-#0 | 26 | 3.6 | 8.1 | 9.0 |
| | 20496-032-#0 | 32 | 4.5 | 9.9 | 10.8 |
| ◆ | 20496-034-#0 | 34 | 4.8 | 10.5 | 11.4 |
| | 20496-040-#0 | 40 | 5.7 | 12.3 | 13.2 |
| | 20496-050-#0 | 50 | 7.2 | 15.3 | 16.2 |

◆ MARK MEANS NOT AVAILABLE

MICRO-COAXIAL CABLE DIMENSION

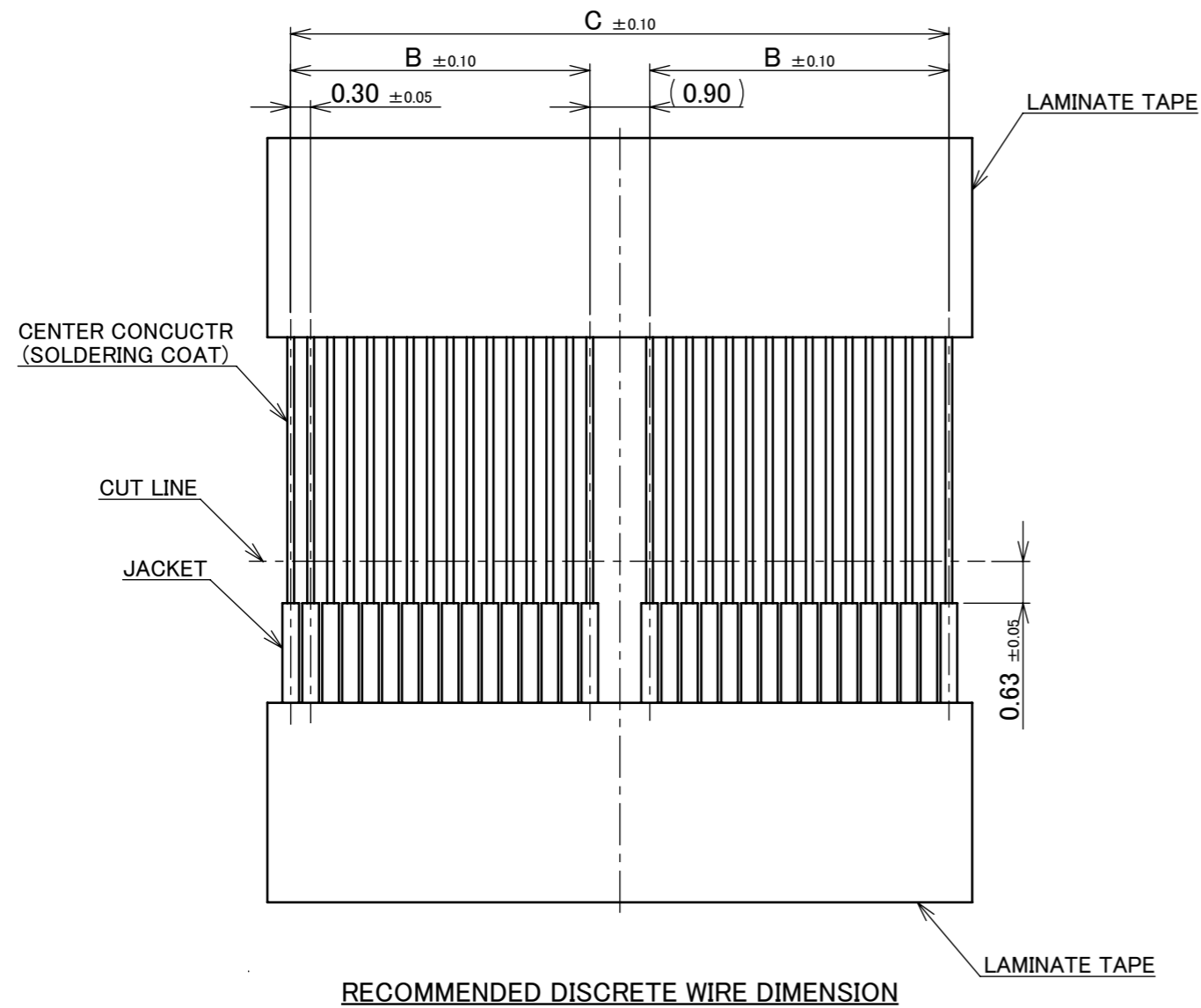
| | a |
|-----|---------|
| #42 | ∅ 0.075 |
| #44 | ∅ 0.063 |
| #46 | ∅ 0.048 |



| | | | | | | | |
|--------------------|---------------|----------------|------------------|----------------------------|------------|---------------|------|
| ANGLE | $\pm 2^\circ$ | 6 OVER 30 MAX. | ± 0.3 | PROJECTION | SERIES No. | CUSTOMER COPY | |
| | 6 MAX. | ± 0.2 | 30 OVER 120 MAX. | ± 0.5 | R1R1 | | |
| GENERAL TOLERANCE. | | | | TITLE | SCALE | I-PEX | |
| DWG. | DATE | | | CABLIN [®] -UA II | 10:1 | | |
| CHK. | | | | PLUG CABLE ASSEMBLY | UNIT | | |
| APP. | | | | DWG. No. | mm | | |
| | | | | 20496 | SIZE | SHEET | REV. |
| | | | | | A3 | 3/4 | 17 |

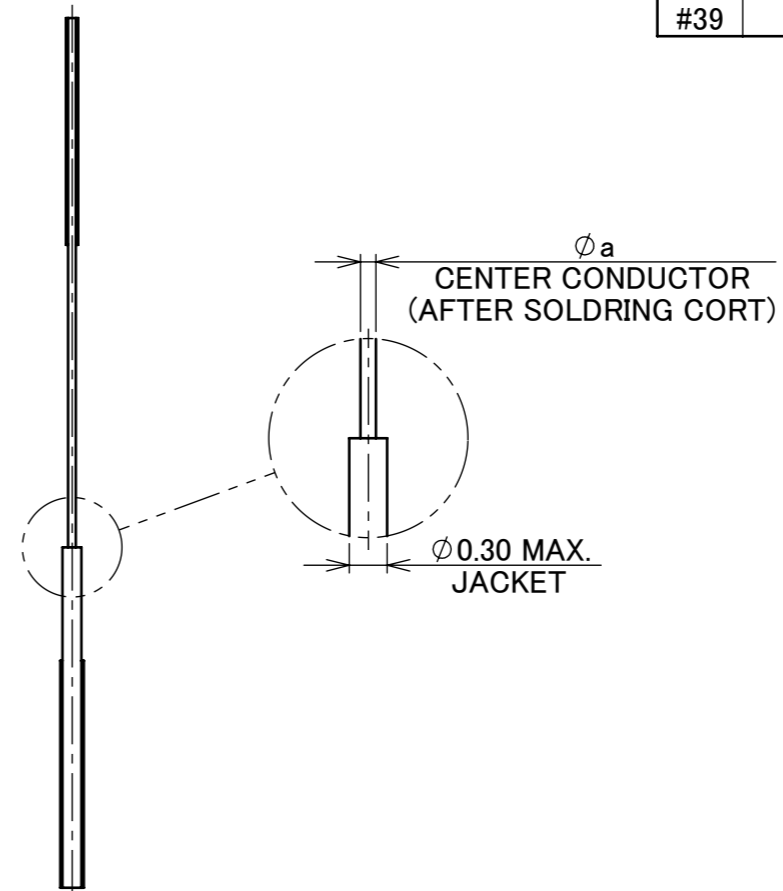
| | PART No. | POS. | B | C |
|---|--------------|------|-----|------|
| | 20496-026-#0 | 26 | 3.6 | 8.1 |
| | 20496-032-#0 | 32 | 4.5 | 9.9 |
| ◆ | 20496-034-#0 | 34 | 4.8 | 10.5 |
| | 20496-040-#0 | 40 | 5.7 | 12.3 |
| | 20496-050-#0 | 50 | 7.2 | 15.3 |

◆ MARK MEANS NOT AVAILABLE



DISCRETE WIRE DIMENSION

| | a |
|-----|--------|
| #39 | Ø0.102 |



| | | | | | | | | |
|--------------------|------|------------------|------|--|-----------------------------|---------------|--------------|------------|
| ANGLE | ±2° | 6 OVER 30 MAX. | ±0.3 | PROJECTION ⊕ | SERIES No. R1R1 | CUSTOMER COPY | | |
| 6 MAX. | ±0.2 | 30 OVER 120 MAX. | ±0.5 | | | | | |
| GENERAL TOLERANCE. | | | | TITLE CABLIN [®] -UA II PLUG CABLE ASSEMBLY | SCALE 10:1 UNIT mm | I-PEX | | |
| DWG. | DATE | | | | | | | |
| CHK. | | | | | | | | |
| APP. | | | | | | | | |
| | | | | DWG. No. | 20496 | SIZE A3 | SHEET 4/4 | REV. 17 |