

Recommended P/N 20374-R**E-31

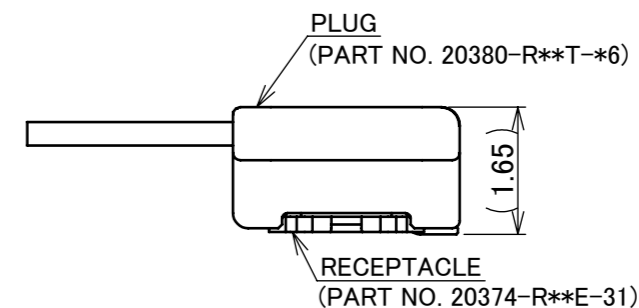
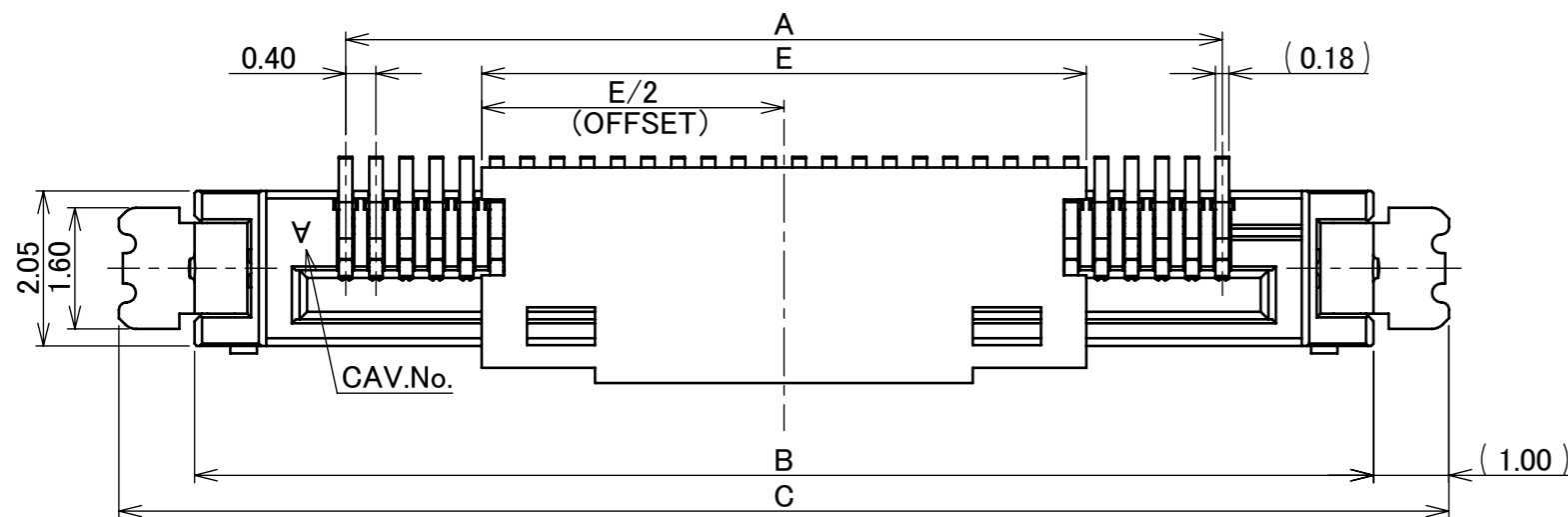
PART NO.	POS.	A	B	C	D	E
20374-R10E-31	10	3.60	7.60	9.60	7.20	5.50
20374-R14E-31	14	5.20	9.20	11.20	8.80	5.50
20374-R20E-31	20	7.60	11.60	13.60	11.20	8.00
20374-R30E-31	30	11.60	15.60	17.60	15.20	8.00
20374-R32E-31	32	12.40	16.40	18.40	16.00	8.00
20374-R35E-31	35	13.60	17.60	19.60	17.20	8.00
20374-R40E-31	40	15.60	19.60	21.60	19.20	8.00
20374-R50E-31	50	19.60	23.60	25.60	23.20	8.00



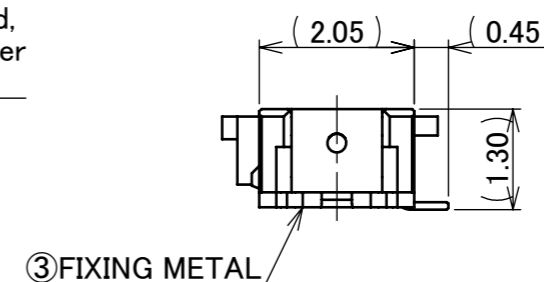
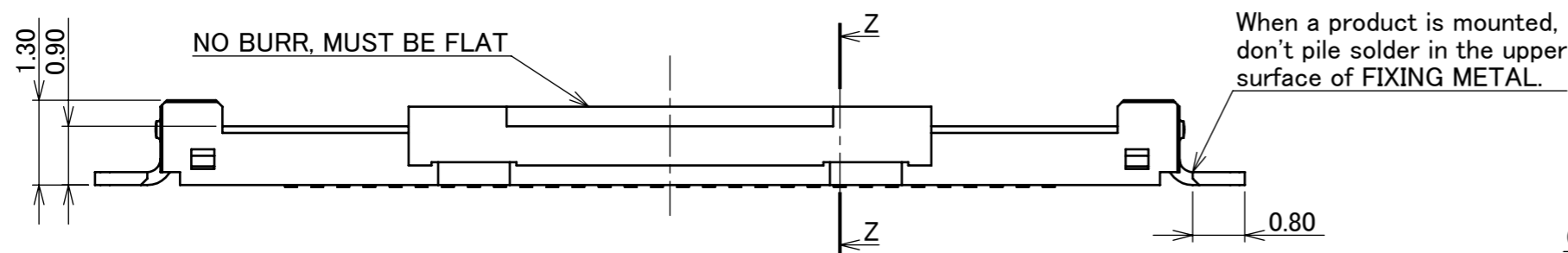
Halogen Free



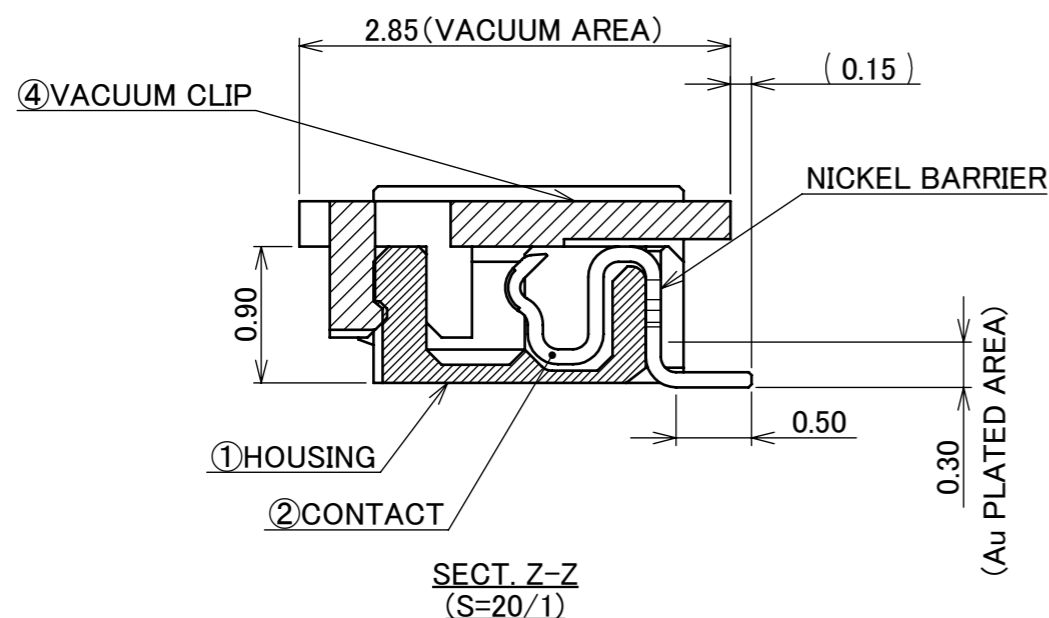
RoHS Compliant



MATING CONDITION



③ FIXING METAL

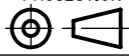


SECT. Z-Z
(S=20/1)

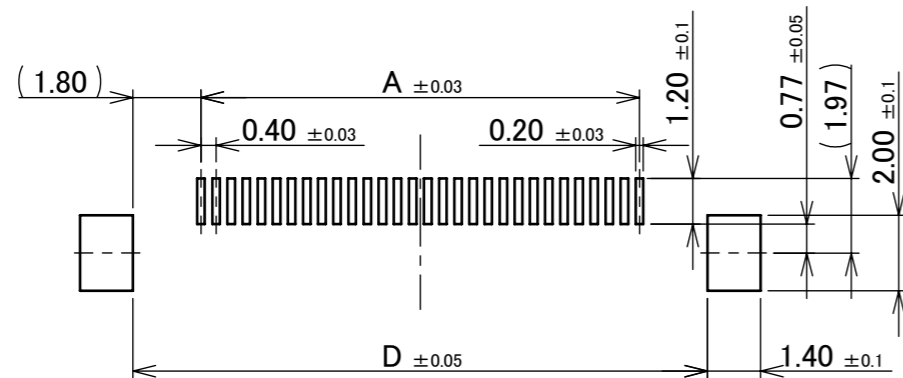
NO.	DISCRIPTION	MATERIAL	FINISH, REMARKS
4	VACUUM CRIP	LCP	UL94V-0, BEIGE
3	FIXING METAL	PHOSPHOR BROZE	Sn/Cu(98/2) (LUSTER) 2.0 μm MIN. OVER Ni 1.00 μm MIN.
2	CONTACT	PHOSPHOR BROZE	CONTACT AREA: Au 0.1 μm MIN. OVER Ni 1.00 μm MIN. SOLDERING AREA: Au 0.05 μm MIN. OVER Ni 1.00 μm MIN.
1	HOUSING	LCP (RED PHOSPHORUS IS NOT USED)	UL94V-0, BLACK

REV.	ECN	BY	DATE	APP.	APP.	PROJECTION	SERIES No.	TITLE	SCALE	SHEET	REV.
29	Z220245	TSU	2022/03/08	H.I	ANGLE ±2°	6 OVER 30 MAX.	±0.3	CABLINER [®] -SS RECEPTACLE ASS'Y	10:1	A3	29
28	Z210420	T.T	Apr./21/'21	H.I	6 MAX. ±0.2	30 OVER 120 MAX.	±0.5				
27	Z201182	K.Hara	Nov./13/'20	Y.S	GENERAL TOLERANCE.			DWG. No. 20374	1/4	29	
26	Z201151	K.Hara	Nov./05/'20	Y.S	DWG. K.Narita	DATE 2004/04/19					
25	Z181296	H.K	Oct./24/'18	Y.S	CHK. -						
24	Z170896	R.H	Aug./04/'17	M.T	APP. T.Harada						
REVISION RECORD											

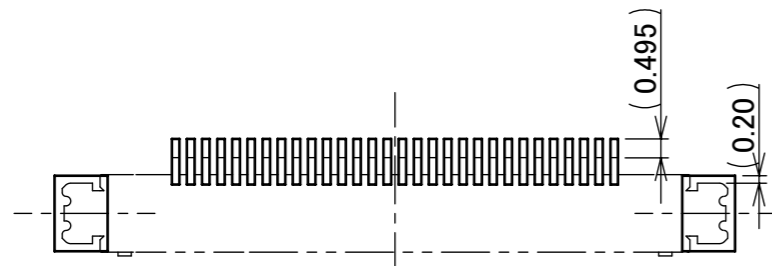
ITEMS	SPECIFICATION
APPLICABLE CABLE	MICRO COAX : AWG# 42 , 40 , 36 DISCRETE : AWG# 36, 34 TWINCOAX : AWG# 40
RATING VOLTAGE	100V AC (PER CONTACT PIN)
RATING AMPERAGE (FOR CONTACT)	0.24A AC/DC [AWG#42] AVAILABLE TO 50 PIN 0.25A AC/DC [AWG#40] AVAILABLE TO 50 PIN 0.30A AC/DC [AWG#40] AVAILABLE TO 32 PIN 0.35A AC/DC [AWG#36] AVAILABLE TO 50 PIN 0.40A AC/DC [AWG#36] AVAILABLE TO 37 PIN 0.35A AC/DC [AWG#34] AVAILABLE TO 50 PIN 1.00A AC/DC [AWG#34] AVAILABLE TO 2 PIN
OPERATING TEMPERATURE	233~358K (-40°C~85°C)
OPERATING HUMIDITY	85% MAX. (NON-CONDENSING)
CONTACT RESISTANCE	INITIAL : 180mohm MAX. (AWG#34) / AFTER TEST : \triangle 40mohm MAX. 230mohm MAX. (AWG#36) 530mohm MAX. (AWG#40) 700mohm MAX. (AWG#42)
GROUND SHELL RESISTANCE	INITIAL : 50mohm MAX. / AFTER TEST : \triangle 40mohm MAX.
INSULATION RESISTANCE	INITIAL : 1000Mohm MIN. / AFTER TEST : 500Mohm MIN.
DIELECTRIC WITHSTANDING VOLTAGE	AC250V 1min
DURABILITY	30 CYCLES
MATING FORCE (INITIAL / AFTER 30 CYCLES)	10P : 29.00N MAX. 32P : 33.40N MAX. 14P : 29.80N MAX. 35P : 34.00N MAX. 20P : 31.00N MAX. 40P : 35.00N MAX. 30P : 33.00N MAX. 50P : 38.00N MAX.
UNMATING FORCE	10P : INITIAL : 4.00N MIN. / AFTER 30 CYCLES : 2.87N MIN. 14P : INITIAL : 4.40N MIN. / AFTER 30 CYCLES : 3.23N MIN. 20P : INITIAL : 5.00N MIN. / AFTER 30 CYCLES : 3.76N MIN. 30P : INITIAL : 6.00N MIN. / AFTER 30 CYCLES : 4.65N MIN. 32P : INITIAL : 6.20N MIN. / AFTER 30 CYCLES : 4.84N MIN. 35P : INITIAL : 6.50N MIN. / AFTER 30 CYCLES : 5.07N MIN. 40P : INITIAL : 7.00N MIN. / AFTER 30 CYCLES : 5.50N MIN. 50P : INITIAL : 8.00N MIN. / AFTER 30 CYCLES : 6.41N MIN.
COPLANARITY	0.10 MAX.
PRODUCT SPECIFICATION	PRS-1239
TEST REPORT	TR-04037
PACKING STANDARD	300-359
INSTRUCTION MANUAL	HIM-04001
APPEARANCE CRITERIA No.	QLS-A***

ANGLE	$\pm 2^\circ$	6 OVER 30 MAX.	± 0.3	PROJECTION 	SERIES No. R3	CUSTOMER COPY							
	6 MAX.	± 0.2	30 OVER 120 MAX.			± 0.5	SCALE	I-PEX					
GENERAL TOLERANCE.					TITLE	UNIT							
DWG.	DATE				CABLIN [®] -SS RECEPTACLE ASS'Y		mm						
CHK.					DWG. No.	20374	SIZE				SHEET	REV.	
APP.							A3	2/4	29				

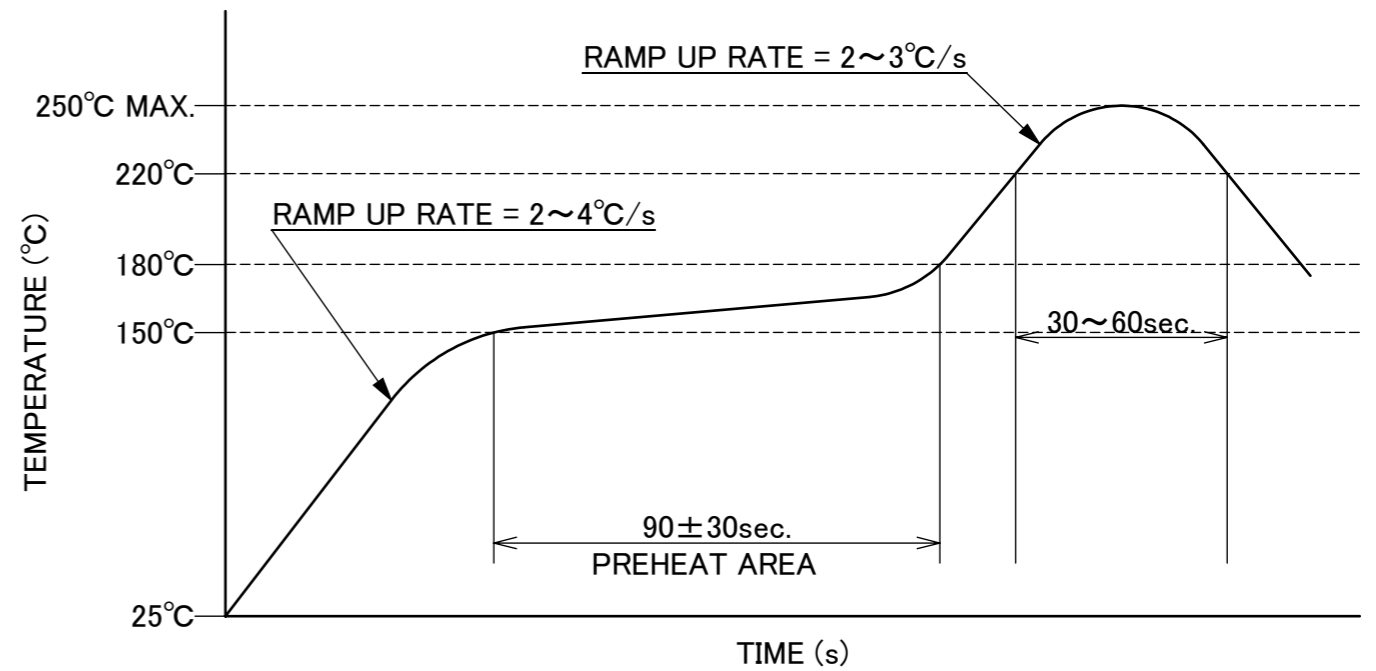
PART NO.	POS.	A	D
20374-R10E-31	10	3.60	7.20
20374-R14E-31	14	5.20	8.80
20374-R20E-31	20	7.60	11.20
20374-R30E-31	30	11.60	15.20
20374-R32E-31	32	12.40	16.00
20374-R35E-31	35	13.60	17.20
20374-R40E-31	40	15.60	19.20
20374-R50E-31	50	19.60	23.20



RECOMMENDED FOOTPRINT PATTERN (MOUNT SIDE)
 Recommended Thickness of Metal Mask : t=0.13mm
 Recommended Opening Ratio of Metal Mask : 79.6%



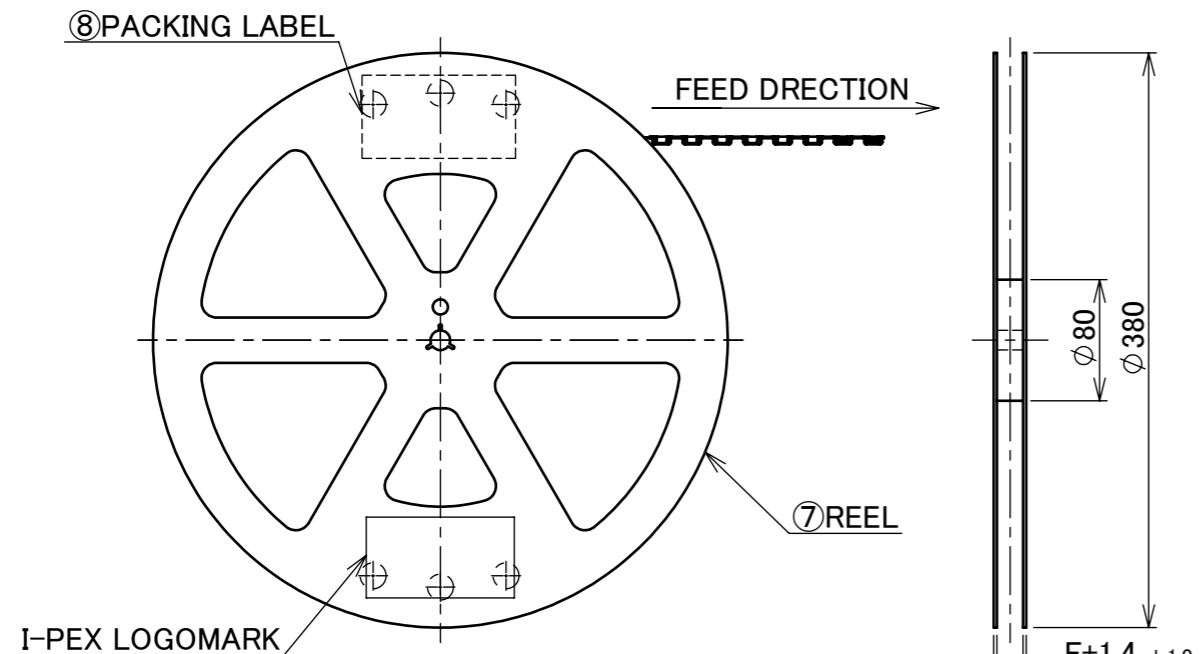
CONNECTOR ON RECOMMENDED FOOTPRINT PATTERN



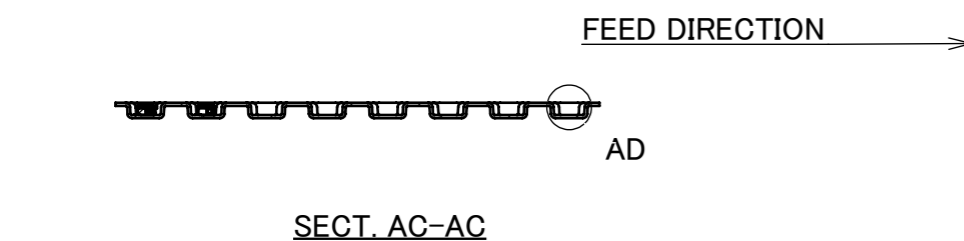
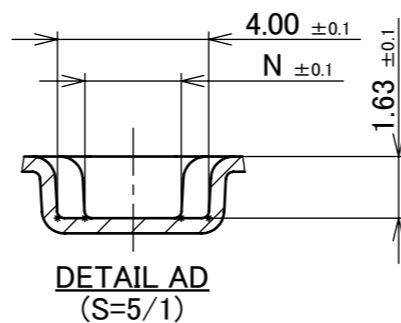
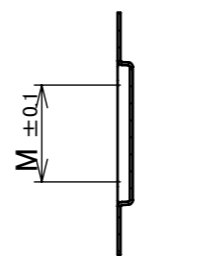
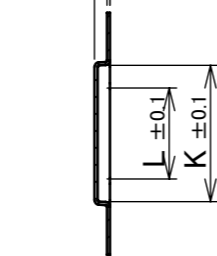
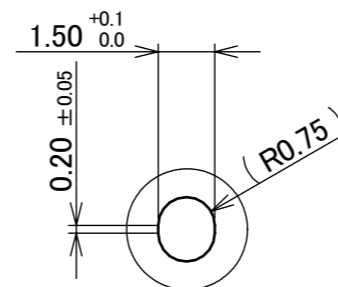
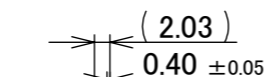
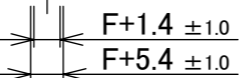
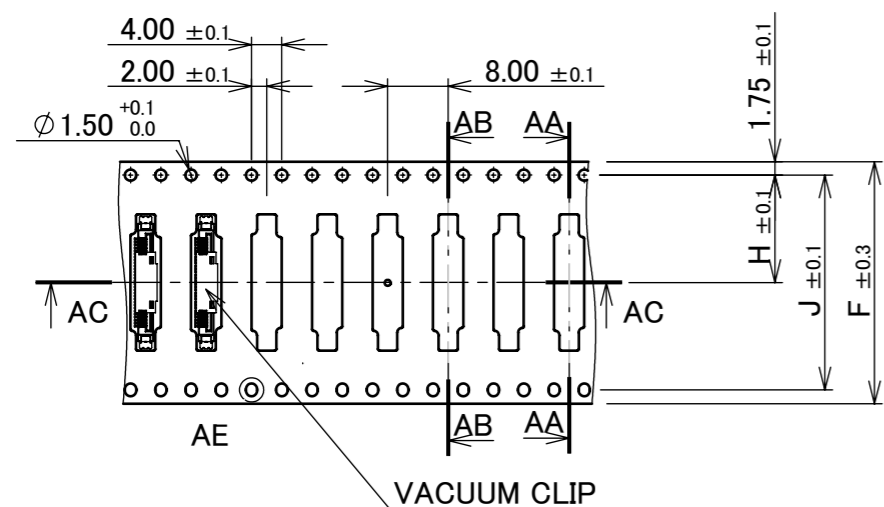
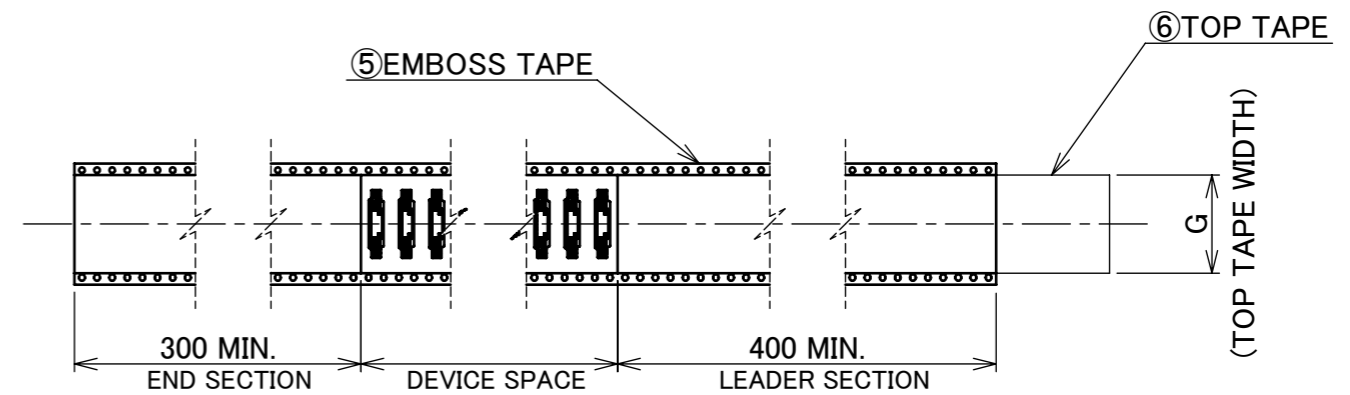
REFLOW TEMPERATURE PROFILE
 SENJU METAL INDUSTRY CO., LTD. : M705-SHF(Sn96.5 Ag3.0 Cu0.5)

ANGLE	±2°	6 OVER 30 MAX.	±0.3	PROJECTION ⊕	SERIES No. R3	CUSTOMER COPY			
	6 MAX.	±0.2	30 OVER 120 MAX.						±0.5
GENERAL TOLERANCE.				TITLE		SCALE	I-PEX		
DWG.	DATE			CABLINER [®] -SS RECEPTACLE ASS'Y		5:1			
CHK.						UNIT			
APP.				DWG. No. 20374		mm			
				SIZE	SHEET	REV.			
				A3	3/4	29			

PART NO.	POS.	F	G	H	J	K	L	M	N	QTY. PER EMOSS REEL (PIECES / REEL)	QTY. PER PACKING CARTON (REELS / CARTON)
20374-R10E-31	10	24.00	21.50	11.50	-	9.90	5.90	5.90	2.50	6000 PIECES / REEL	3 REELS / CARTON = 18000 PIECES
20374-R14E-31	14	24.00	21.50	11.50	-	11.50	7.50	7.50	2.50		
20374-R20E-31	20	32.00	26.00	14.20	28.40	14.00	9.00	8.78	2.55		
20374-R30E-31	30	32.00	26.00	14.20	28.40	18.00	12.00	12.78	2.55		
20374-R32E-31	32	32.00	26.00	14.20	28.40	18.80	12.00	13.58	2.55		
20374-R35E-31	35	32.00	26.00	14.20	28.40	20.00	12.00	14.78	2.55		
20374-R40E-31	40	32.00	26.00	14.20	28.40	22.00	12.00	16.78	2.55		
20374-R50E-31	50	44.00	37.00	20.20	40.40	26.00	12.00	20.78	2.55		



- NOTES.
- TAPING SPECIFICATION FOLLOWS JIS C 0806 (IEC 60286-3).
 - MAKE EMPTY SECTION OF LEADER AND END ON EACH END OF THE TAPE.
 - TOP TAPE SHALL NOT STICK OUT FROM EMOSS TAPE.
 - TOP TAPE SHALL NOT COVER FEED HOLE.



NO.	DISCRIPTION	MATERIAL	FINISH , REMARKS
8	PACKING LABEL	-	-
7	REEL	PS	BLACK
6	TOP TAPE	PET t=0.062 TRANSPARENCY	ANTI-STATIC TYPE
5	EMBOSS TAPE	PS t=0.4 TRANSPARENCY	ANTI-STATIC TYPE

ANGLE	±2°	6 OVER 30 MAX.	±0.3	PROJECTION	SERIES No.	CUSTOMER COPY	
6 MAX.	±0.2	30 OVER 120 MAX.	±0.5		R3	 SCALE 1:5 UNIT mm SIZE A3 SHEET 4/4 REV. 29	
GENERAL TOLERANCE.				TITLE	CABLINE® -SS RECEPTACLE ASS'Y		
DWG.	DATE			DWG. No.	20374		
CHK.							
APP.							