

Recommended P/N 20474-0**E-12

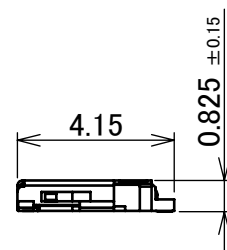
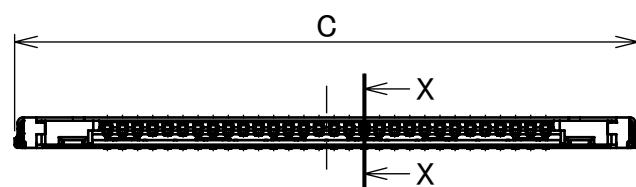
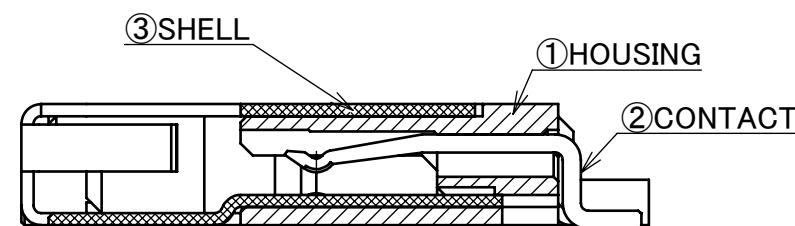
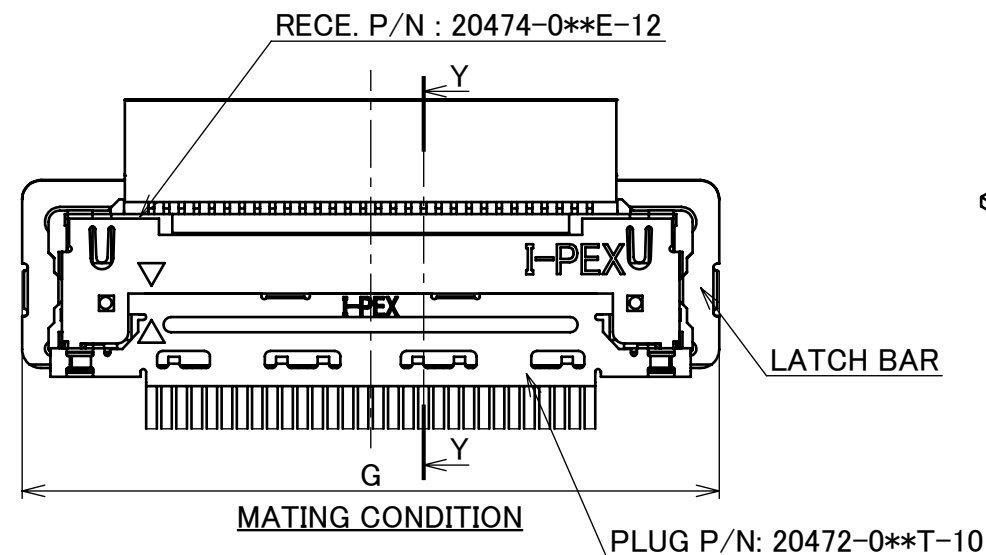
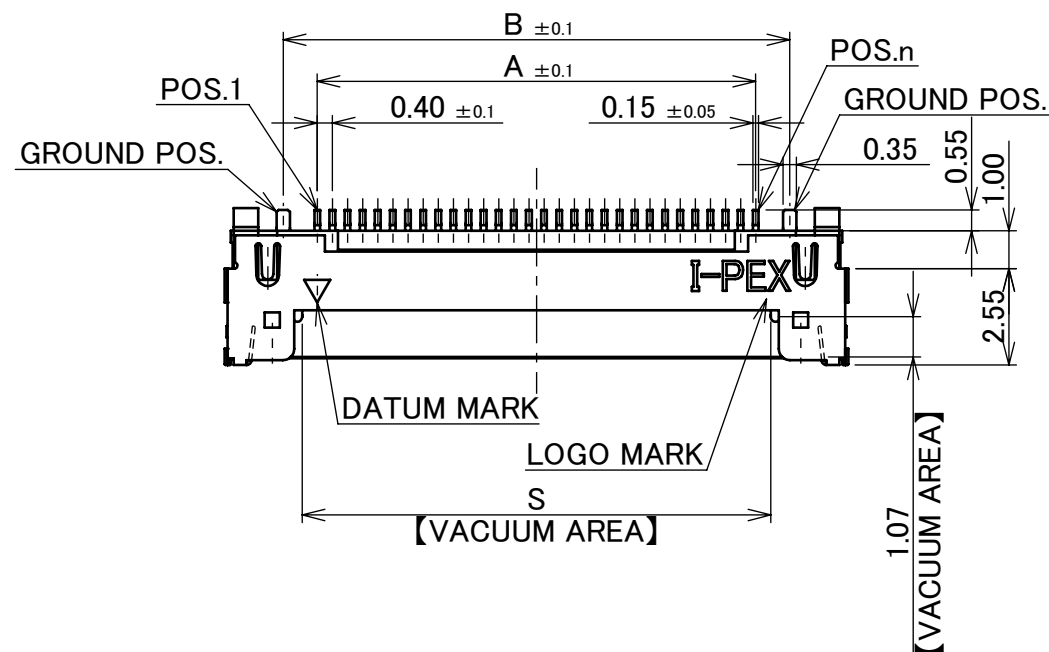
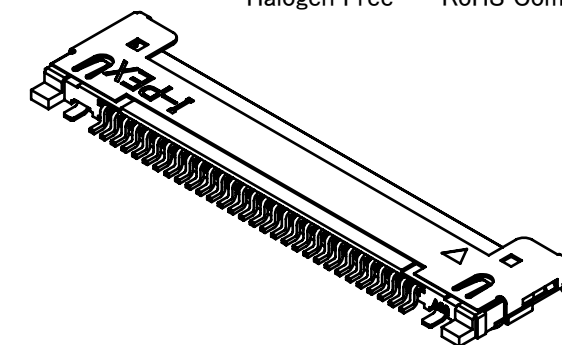
PART NO.	POS.	A	B	C	G	S
20474-030E-12	30	11.60	13.40	16.50	18.44	12.40
20474-040E-12	40	15.60	17.40	20.50	22.44	16.40



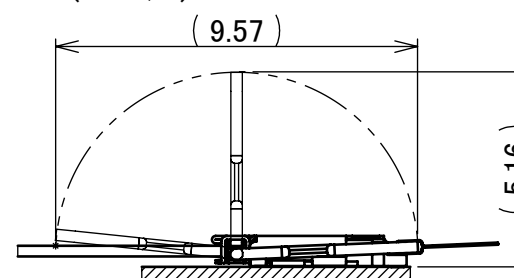
Halogen Free



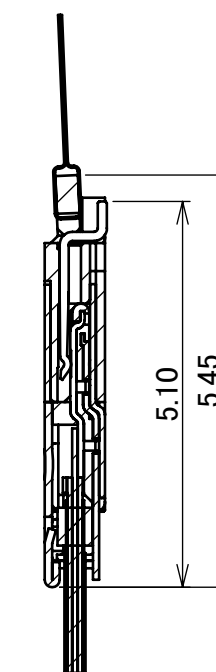
RoHS Compliant



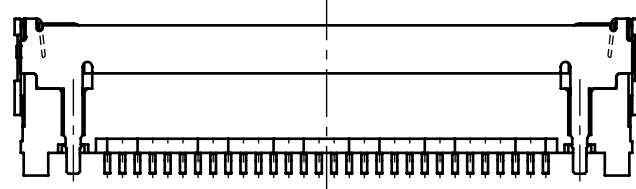
SECT. X-X (S=20/1)



LATCH MOVEMENTS



SECT. Y-Y (S=10/1)



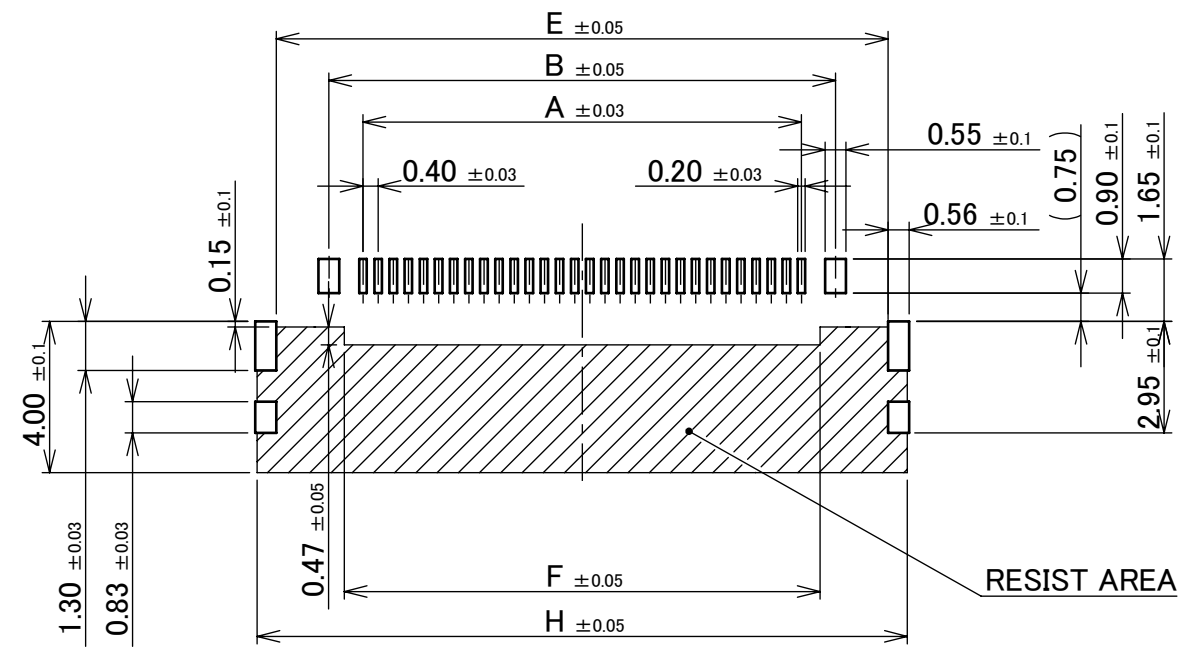
NO.	DISCRIPTION	MATERIAL	FINISH , REMARKS
3	SHELL	PHOSPHOR BRONZE	Au 0.05 μ m MIN. OVER Ni 1.00 μ m MIN.
2	CONTACT	PHOSPHOR BRONZE	CONTACT AREA : Au 0.1 μ m MIN. OVER Ni 1.00 μ m MIN. SOLDERING AREA : Au 0.03 μ m MIN. OVER Ni 1.00 μ m MIN.
1	HOUSING	LCP	UL94V-0, BLACK

REV.	ECN	BY	DATE	APP.	APP.	ANGLE	±2°	6 OVER 30 MAX.	±0.3	PROJECTION	SERIES No.	CUSTOMER COPY					
13	Z231029	H.U	Sept./26/'23	T.M		6 MAX.	±0.2	30 OVER 120 MAX.	±0.5		R5	CUSTOMER COPY					
12	Z211210	R.M	Oct./04/'21	H.I													
11	Z200134	Y.Sasa	Jan./31/'20	H.I		GENERAL TOLERANCE.				TITLE CABLINE® -CBL RECEPTACLE ASSEMBLY	SCALE 5:1 UNIT mm						
10	Z180949	M.N	July/20/'18	Y.S	DWG.	N.Hamauchi		DATE	2008/02/28								
9	Z161517	R.H	Dec./16/'16	K.N	CHK.												
8	Z160058	K.H	Jan./21/'16	K.N	APP.												
REV.	ECN	BY	DATE	APP.	APP.	REVISION RECORD				DWG. No.	20474	SIZE	A3	SHEET	1/5	REV.	13

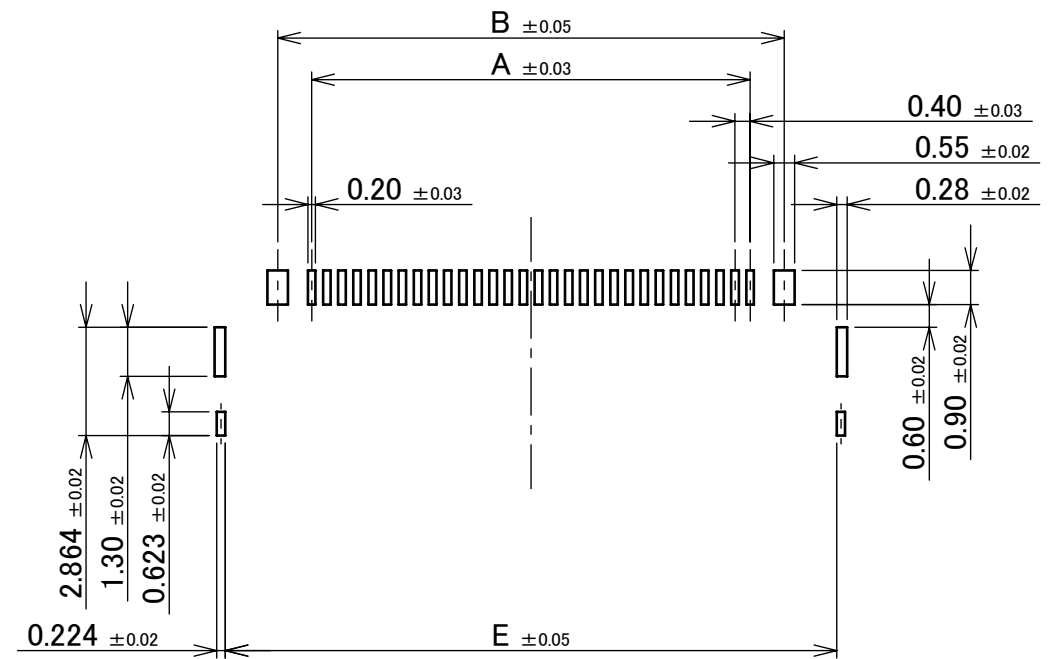
ITEMS	SPECIFICATION
APPLICABLE CABLE	MICRO-COAXIAL CABLE : AWG# 40, 42, 44 DISCRETE WIRE : AWG# 36
RATING VOLTAGE	100V AC (PER CONTACT PIN)
RATING AMPERAGE (FOR CONTACT)	0.1A AC/DC [AWG#44] PER CONTACT PIN 0.24A AC/DC [AWG#42] PER CONTACT PIN 0.3A AC/DC [AWG#40] PER CONTACT PIN 0.8A AC/DC [AWG#36] PER CONTACT PIN
OPERATING TEMPERATURE	233~358K(-40°C~+85°C)
OPERATING HUMIDITY	85% MAX.(NON-CONDENSING)
CONTACT RESISTANCE	INITIAL : 275mohm MAX. (AWG#36)/ AFTER TEST : \triangle 40mohm MAX. 600mohm MAX. (AWG#40) 700mohm MAX. (AWG#42) 1080mohm MAX. (AWG#44)
GROUND SHELL RESISTANCE	INITIAL : 50mohm MAX. / AFTER TEST : \triangle 40mohm MAX.
INSULATION RESISTANCE	INITIAL : 1000Mohm MIN. / AFTER TEST : 500Mohm MIN.
DIELECTRIC WITHSTANDING VOLTAGE	AC250V 1min
DURABILITY	30 CYCLES
MATING FORCE (INITIAL / AFTER TEST)	30P : 10N MAX. 40P : 12N MAX.
UNMATING FORCE (INITIAL / AFTER TEST)	30P : 3.0N MIN. 40P : 4.0N MIN.
CABLE RETENTION FORCE	30P : 14.70N MIN. 40P : 19.60N MIN.
COPLANARITY	0.10 MAX.
PRODUCT SPECIFICATION	PRS-1421
TEST REPORT	TR-08030
PACKING STANDARD	300-657
INSTRUCTION MANUAL	HIM-09002
APPEARANCE CRITERIA No.	QLS-A***

ANGLE	$\pm 2^\circ$	6 OVER 30 MAX.	± 0.3	PROJECTION 	SERIES No. R5	CUSTOMER COPY		
6 MAX.	± 0.2	30 OVER 120 MAX.	± 0.5					
GENERAL TOLERANCE.				TITLE CABLINER [®] -CBL RECEPTACLE ASSEMBLY	SCALE 5:1 UNIT mm	I-PEX		
DWG.	DATE							
CHK.								
APP.								
				DWG. No.	20474	SIZE A3	SHEET 2/5	REV. 13

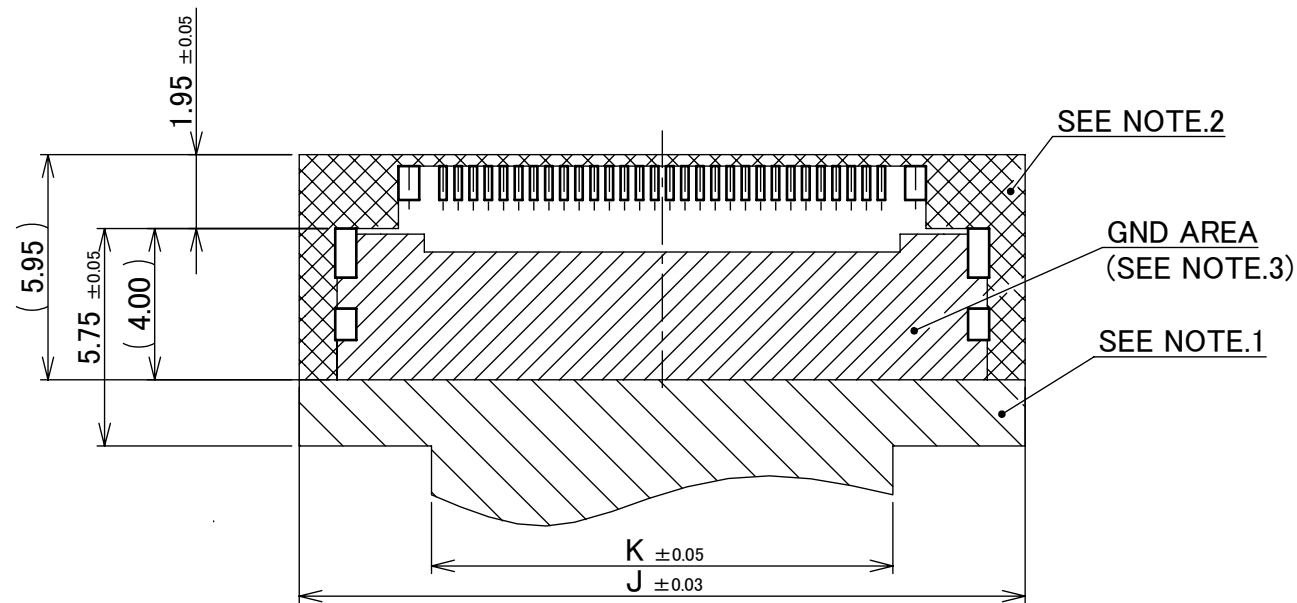
PART NO.	POS.	A	B	E	F	H	J	K
20474-030E-12	30	11.60	13.40	16.18	12.59	17.20	19.20	12.20
20474-040E-12	40	15.60	17.40	20.18	16.59	21.20	23.20	16.20



RECOMMENDED FOOTPRINT PATTERN



RECOMMENDED METAL MASK LAYOUT
METAL MASK THICKNESS : t=0.1 mm

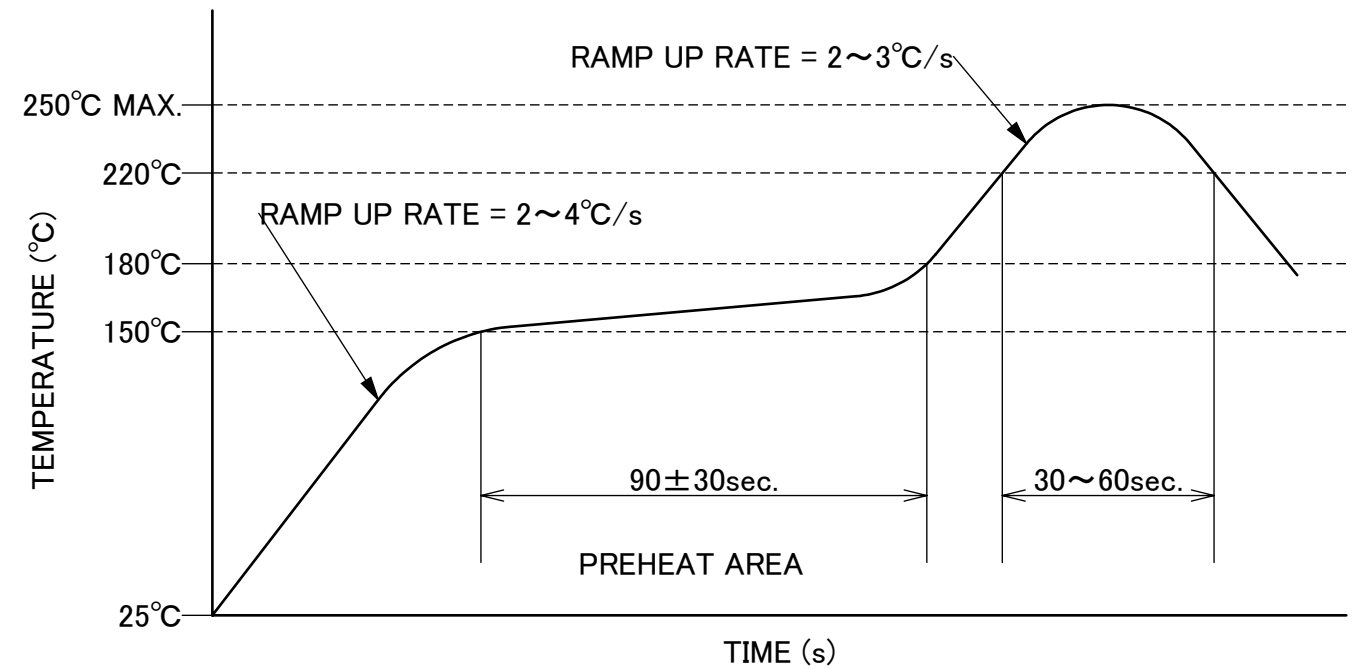
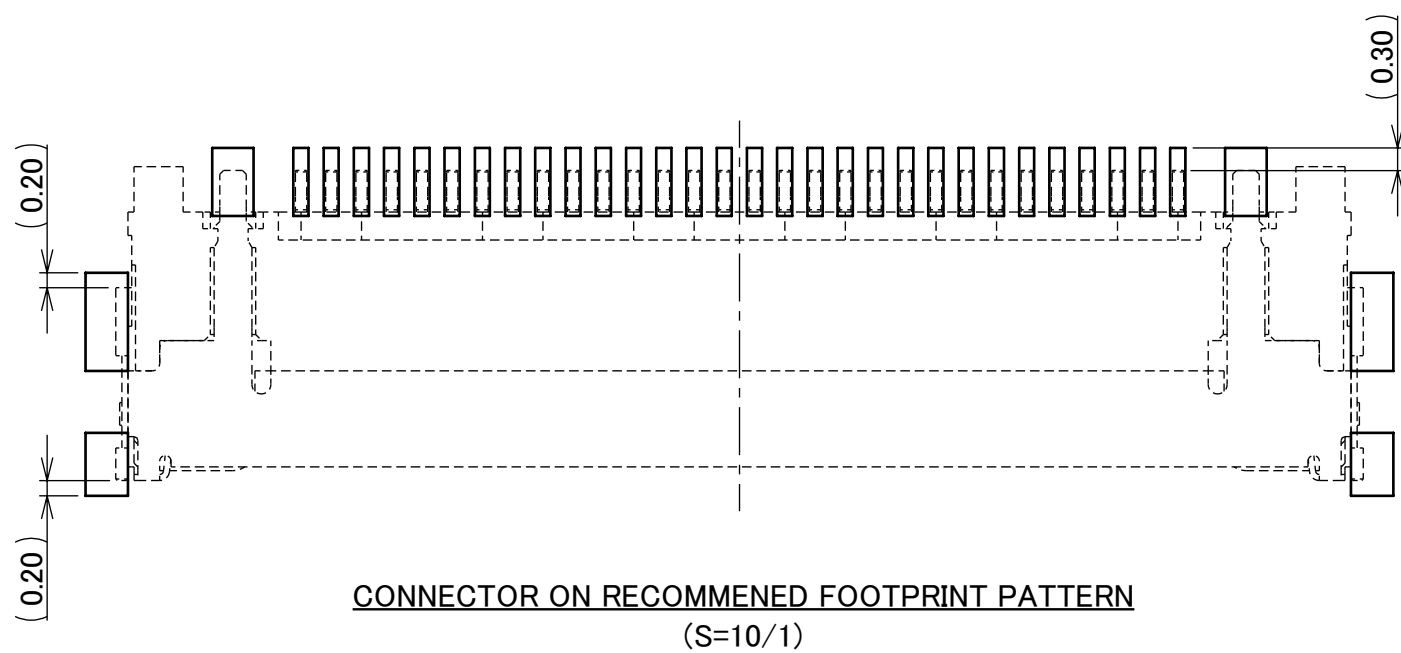


COMPONENTS PROHIBITED AREA

NOTES.

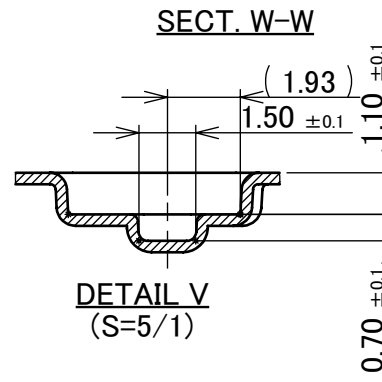
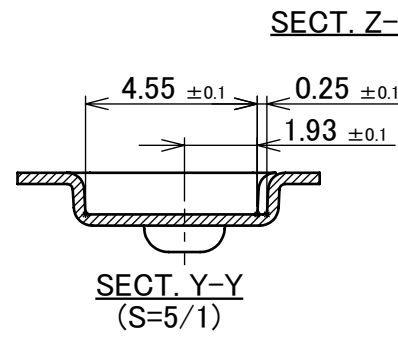
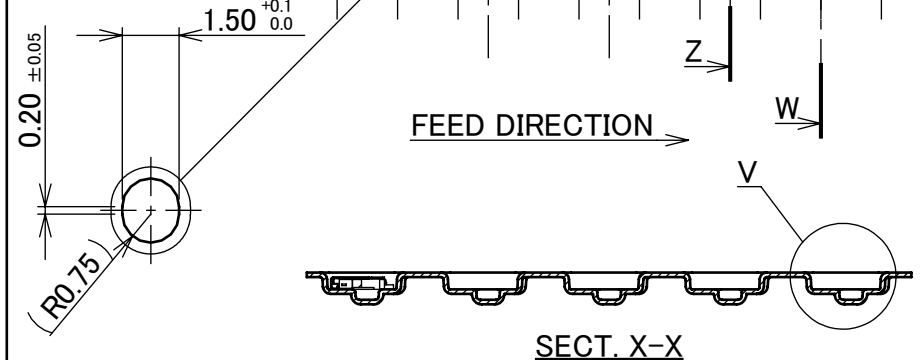
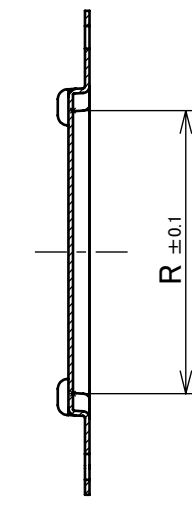
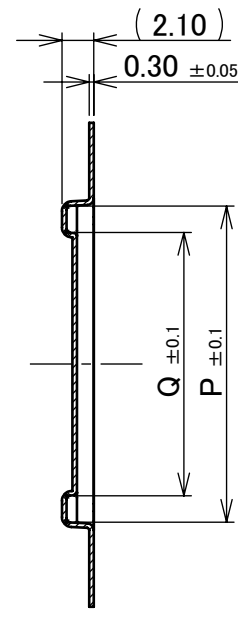
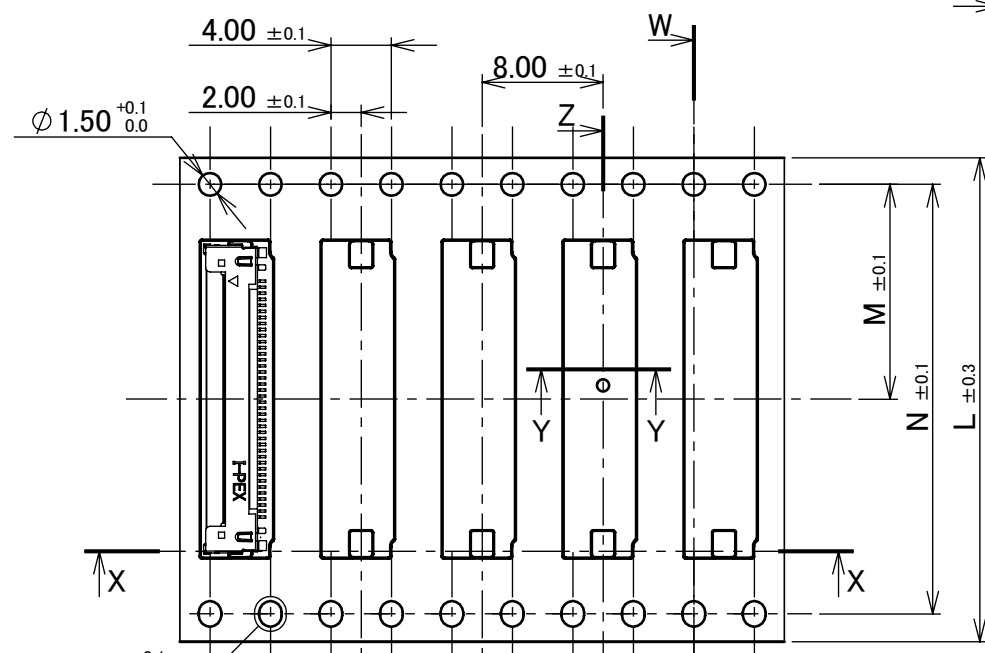
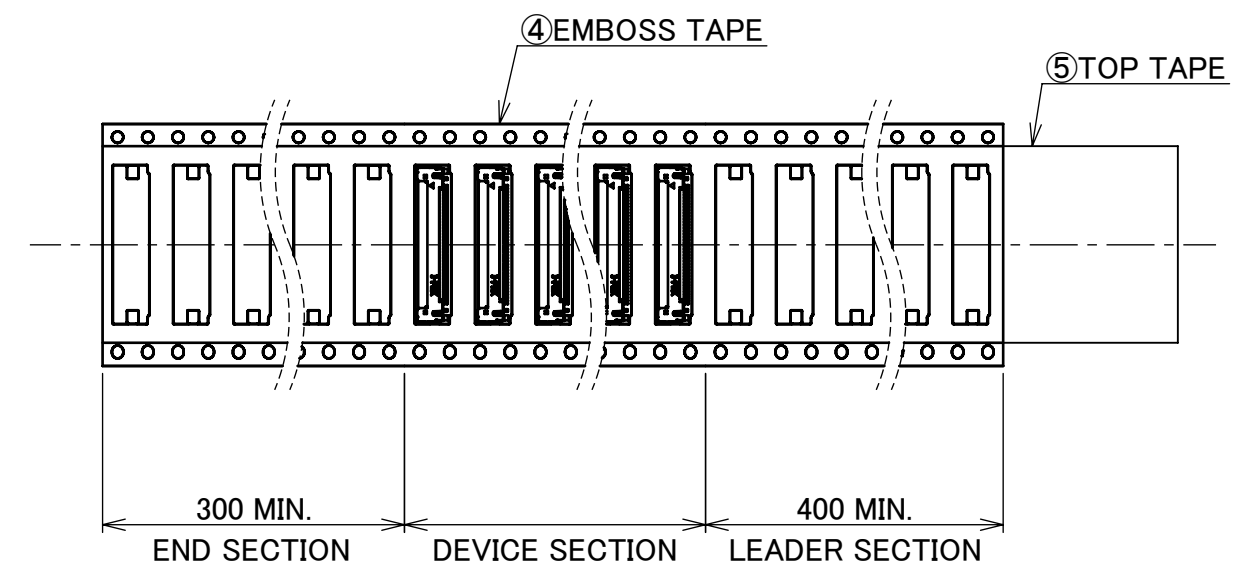
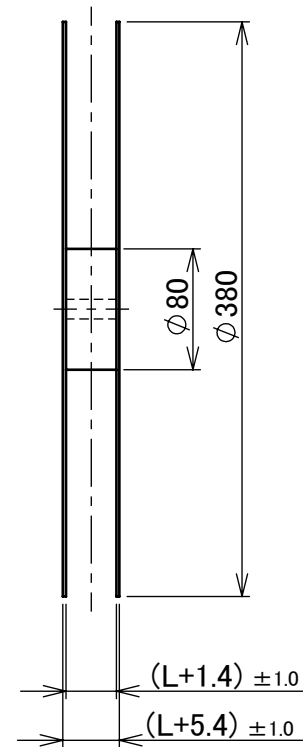
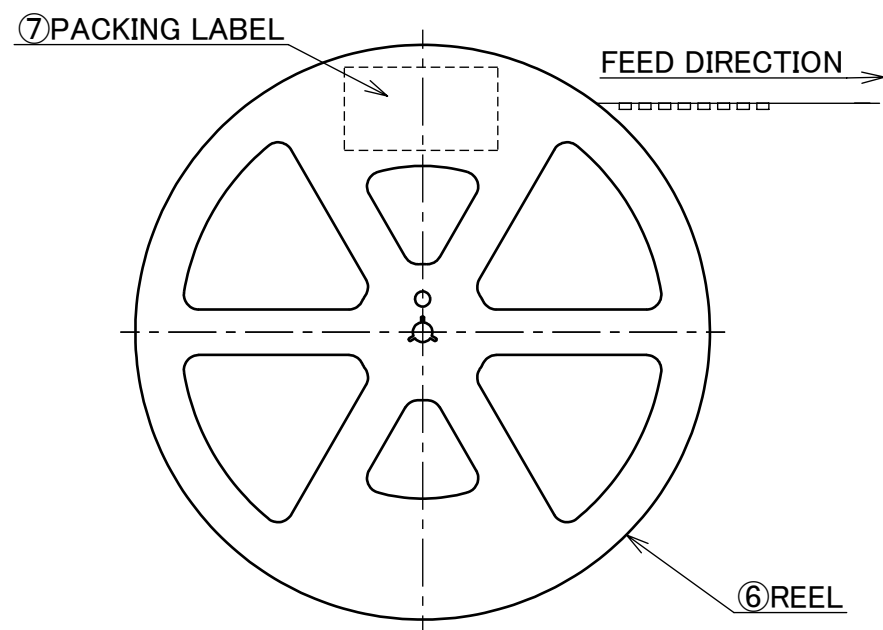
- DO NOT MOUNT ANOTHER COMPONENT IN THIS AREA.
- IN CASE OF PLUG WITH LATCH BAR(20472-0**T-10), DO NOT MOUNT ANOTHER COMPONENT IN THIS AREA.
- SODLER RESIST MUST BE APPLIED TO THIS AREA.

ANGLE	±2°	6 OVER 30 MAX.	±0.3	PROJECTION	SERIES No.	CUSTOMER COPY	
	6 MAX.	±0.2	30 OVER 120 MAX.	±0.5	R5		
GENERAL TOLERANCE.				TITLE	SCALE	I-PEX	
DWG.	DATE			CABLIN [®] -CBL RECEPTACLE ASSEMBLY	5:1		
CHK.					UNIT		
APP.				DWG. No.	20474	SIZE	SHEET
						A3	3/5
							REV.
							13



ANGLE	±2°	6 OVER 30 MAX.	±0.3	PROJECTION ⊕	SERIES No. R5	CUSTOMER COPY			
6 MAX.	±0.2	30 OVER 120 MAX.	±0.5						
GENERAL TOLERANCE.				TITLE		SCALE	I-PEX		
DWG.	DATE			CABLINER [®] -CBL RECEPTACLE ASSEMBLY		5:1			
CHK.						UNIT			
APP.						mm			
				DWG. No.	20474	SIZE	SHEET	REV.	
						A3	4/5	13	

PART NO.	L	M	N	P	Q	R	QTY. PER EMBOSS REEL (PIECES / REEL)	QTY. PER PACKING CARTON (REELS / CARTON)
20474-030E-12	24.00	11.50	-	16.90	13.40	14.70	5000 / REEL	5 / CARTON = 25000
20474-040E-12	32.00	14.20	28.40	20.90	17.40	18.70		4 / CARTON = 20000



- NOTES.
- TAPING SPECIFICATION FOLLOWS JIS C 0806 (IEC 60286-3).
 - MAKE EMPTY SECTION OF LEADER AND END ON EACH END OF THE TAPE.
 - TOP TAPE SHALL NOT STICK OUT FROM EMBOSS TAPE.
 - TOP TAPE SHALL NOT COVER FEED HOLE.

NO.	DISCRIPTION	MATERIAL	FINISH , REMARKS
7	PACKING LABEL	-	-
6	REEL	PS	ANTI-STATIC TYPE BLACK
5	TOP TAPE	PET t=0.062 TRANSPARENCY	ANTI-STATIC TYPE
4	EMBOS TAPE	PS t=0.3 TRANSPARENCY	ANTI-STATIC TYPE

ANGLE	±2°	6 OVER 30 MAX.	±0.3	PROJECTION	SERIES No.	CUSTOMER COPY	
6 MAX.	±0.2	30 OVER 120 MAX.	±0.5		R5		
GENERAL TOLERANCE.				TITLE	CABLIN [®] -CBL RECEPTACLE ASSEMBLY	SCALE	2:1
DWG.	DATE			UNIT		mm	
CHK.				DWG. No.	20474		SIZE
APP.						SHEET	5/5
						REV.	13