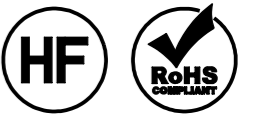


Recommended P/N 2764-0\*\*1-002(12~60P) 2764-0101-003(10P)

PART NO.	A	B	C	D	E
2764-0101-00#	9.40	3.88	6.66	-	-
2764-0121-00#	10.20	4.68	7.46	-	-
2764-0201-00#	13.40	7.88	10.66	2.50	5.00 { = 2.50 × (3 - 1) }
2764-0301-00#	17.40	11.88	14.66	3.00	9.00 { = 3.00 × (4 - 1) }
2764-0401-00#	21.40	15.88	18.66	3.25	13.00 { = 3.25 × (5 - 1) }
2764-0501-00#	25.40	19.88	22.66	3.40	17.00 { = 3.40 × (6 - 1) }
2764-0601-00#	29.40	23.88	26.66	4.00	20.00 { = 4.00 × (6 - 1) }

# PATENT REGISTERED



P/N: 2764-0\*\*1-00#  
SEE TABLE.1  
Pos.

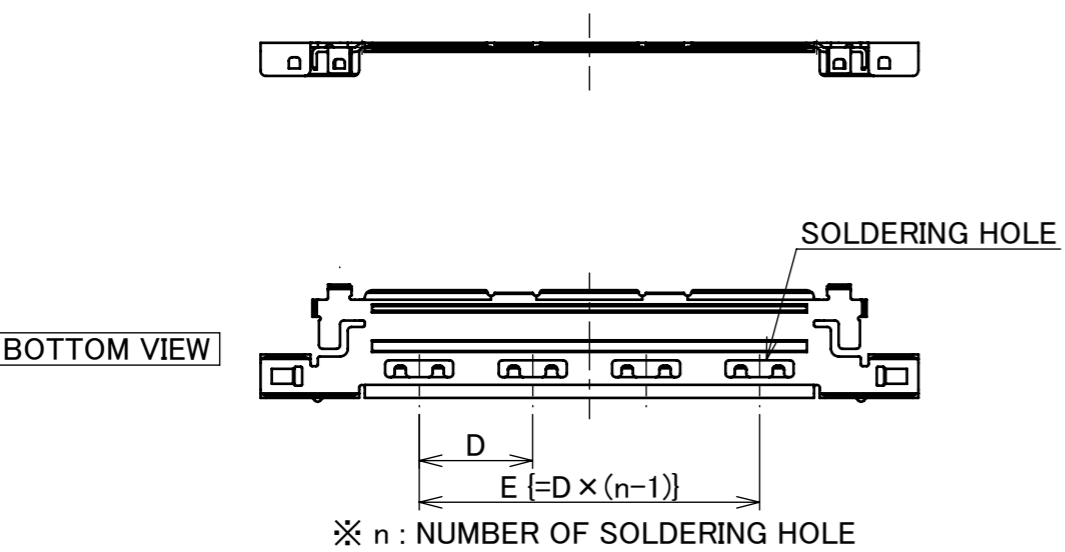
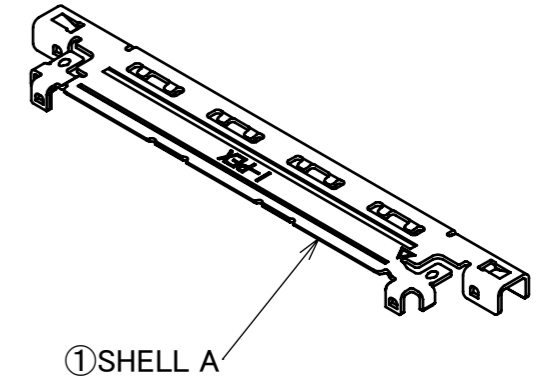
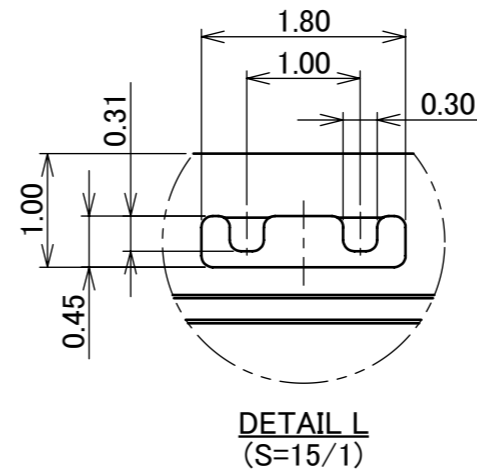
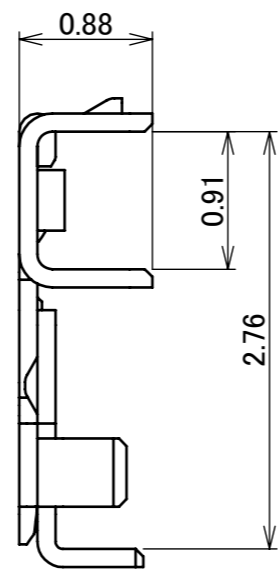
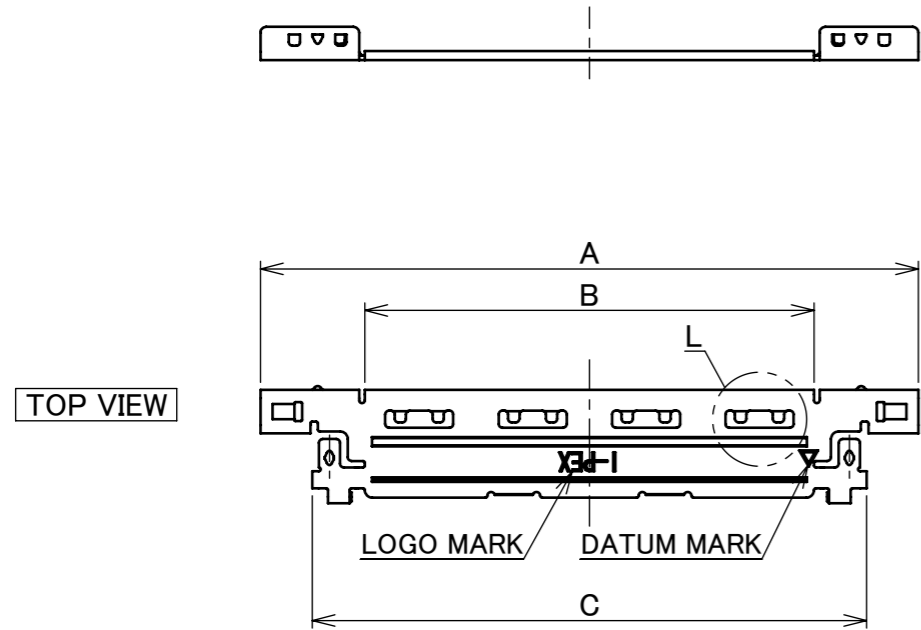


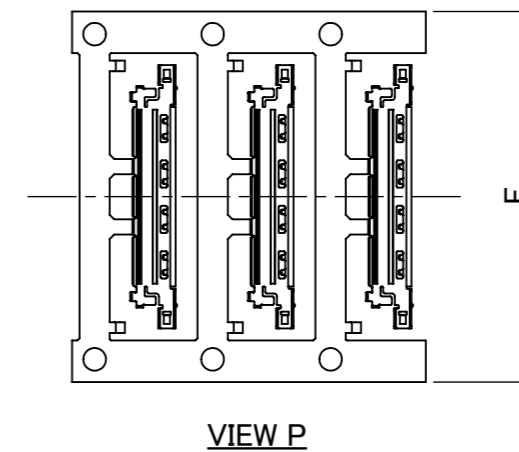
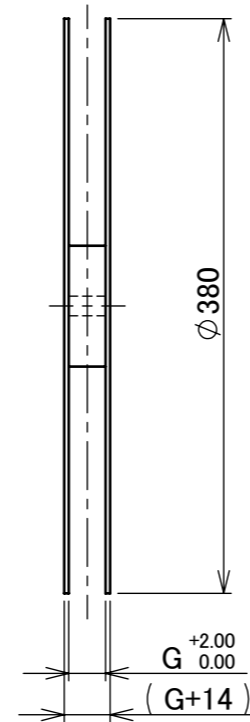
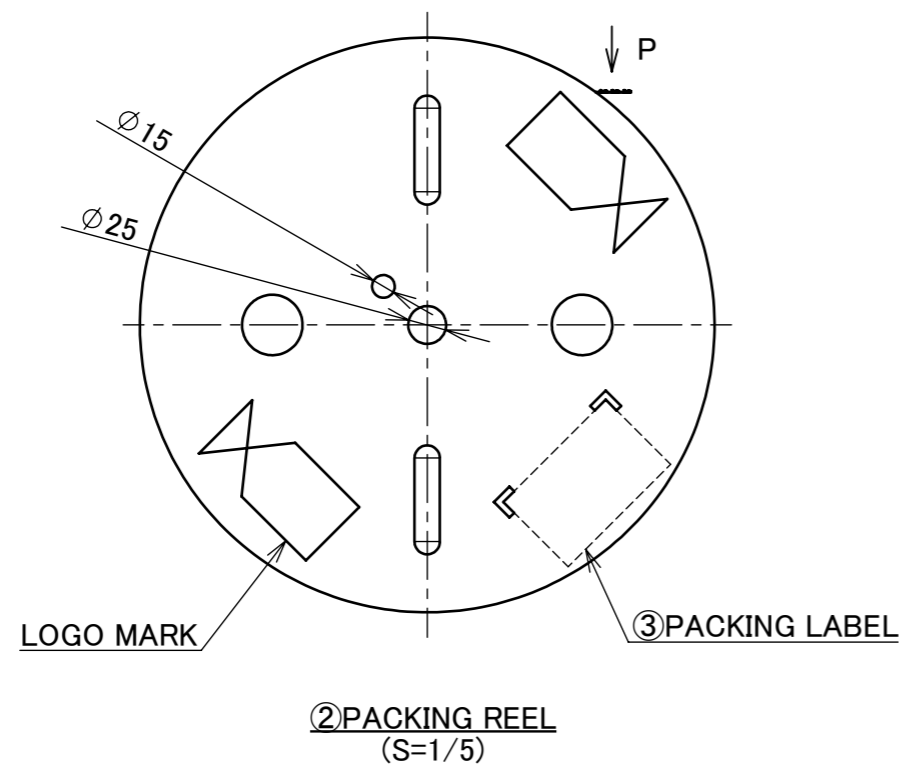
TABLE.1

PART NO.	SHELL A FINISH
2764-0**1-002	TOP SIDE Au 0.03 μm MIN. OVER Ni 1.00 μm MIN. BOTTOM SIDE Ni 1.00 μm MIN.(THERE IS THE POSSIBILITY THAT Au ATTACHES RANDOMLY)
2764-0**1-003	PARTIAL Au 0.003 μm MIN. OVER Ni 1.00 μm MIN.

NO.	DISCRIPTION	MATERIAL	FINISH , REMARKS
1	SHELL A	PHOSPHOR BRONZE	SEE ABOVE TABLE.1

REV.	ECN	BY	DATE	APP.	APP.	DATE	DWG. No.	2764	SIZE	SHEET	REV.	
11	Z210833	M.N	July/26/'21	H.I	ANGLE	±2°	6 OVER 30 MAX.	±0.3	PROJECTION	SERIES No. R4	CUSTOMER COPY	
10	Z200251	Y.Sasa	Mar./03/'20	H.I	6 MAX.	±0.2	30 OVER 120 MAX.	±0.5				
9	Z191176	Y.Sasa	Sept./06/'19	H.I	GENERAL TOLERANCE.			TITLE CABLINER® -CA PLUG SHELL-A	SCALE	I-PEX		
8	Z180930	M.N	July/17/'18	H.I	DWG.	H.Mashima	DATE		2013/07/16		5:1	
7	Z180791	M.N	June/19/'18	Y.S	CHK.	J.Tateishi	2013/07/16		mm			
6	Z180722	M.N	June/05/'18	Y.S	APP.	E.Kawabe	2013/07/16	DWG. No.	2764	SIZE	SHEET	REV.
REVISION RECORD									A3	1/2	11	

PART NO.	F	G	REEL QTY.	QTY. (1 REEL)	QTY. IN PACKING CARTON (1 CARTON)	PACKING STANDARD
2764-0101-00#	24.50	30.00	3 REELS	6000	6000 × 3 = 18000	300-822
2764-0121-00#	24.50	30.00			6000 × 3 = 18000	
2764-0201-00#	20.50	25.00	4 REELS		6000 × 4 = 24000	
2764-0301-00#	24.50	30.00	3 REELS		6000 × 3 = 18000	
2764-0401-00#	28.50	30.00				
2764-0501-00#	32.50	35.00				
2764-0601-00#	36.50	40.00				



NO.	DISCRIPTION	MATERIAL	FINISH , REMARKS
3	PACKING LABEL	-	-
2	PACKING REEL	CARDBOARD	-

ANGLE	$\pm 2^\circ$	6 OVER 30 MAX.	$\pm 0.3$	PROJECTION	SERIES No.	CUSTOMER COPY			
6 MAX.	$\pm 0.2$	30 OVER 120 MAX.	$\pm 0.5$		R4				
GENERAL TOLERANCE.				TITLE		SCALE	<b>I-PEX</b>		
DWG.	DATE			CABLIN <sup>®</sup> -CA PLUG SHELL-A		2:1			
CHK.						UNIT			
APP.				DWG. No.		mm			
				2764		SIZE	SHEET	REV.	
						A3	2/2	11	