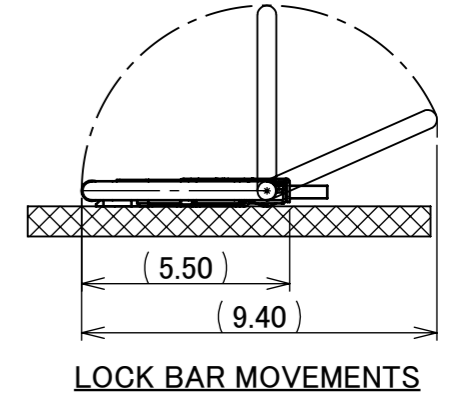
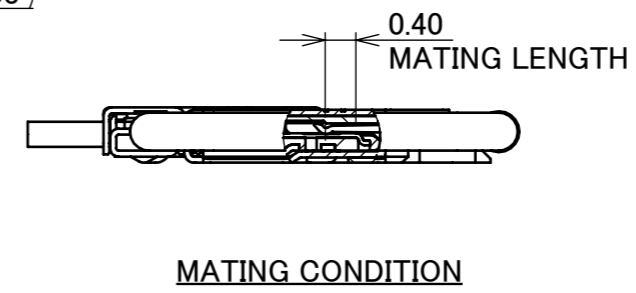
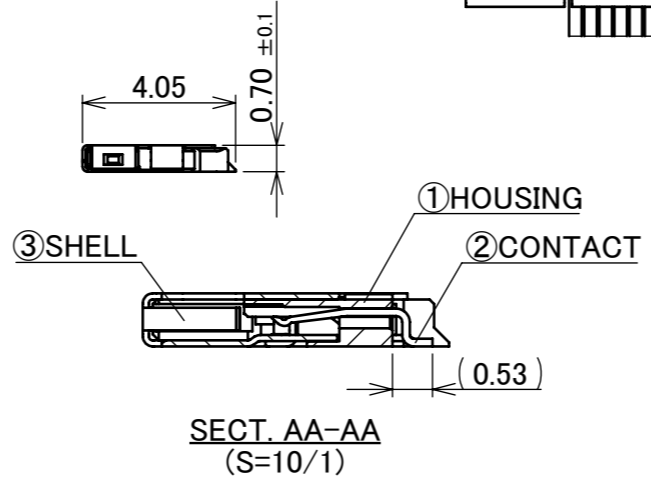
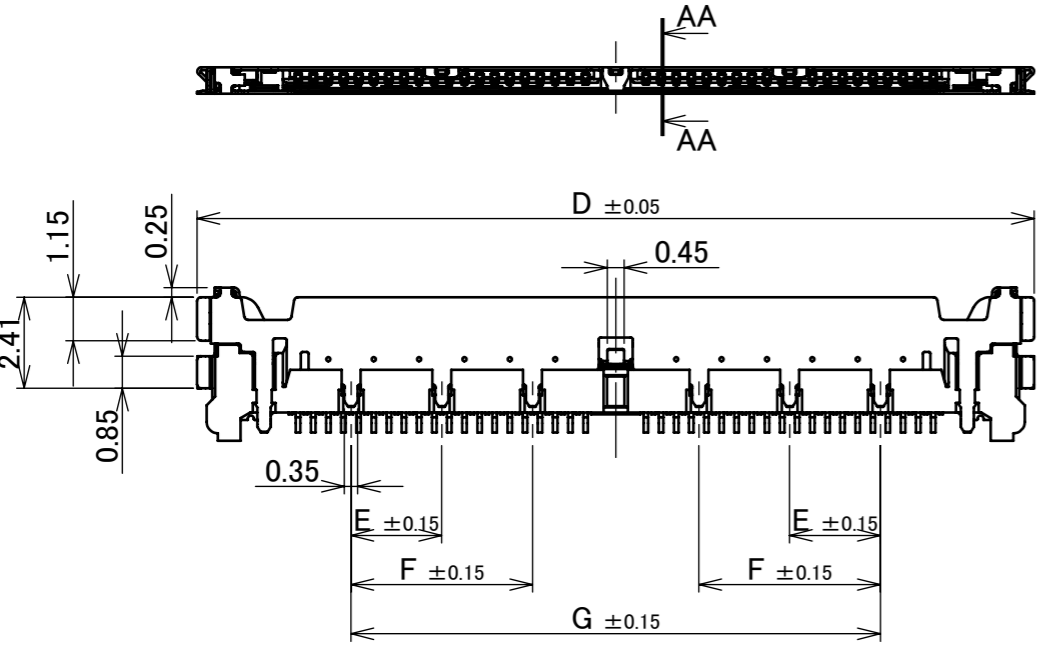
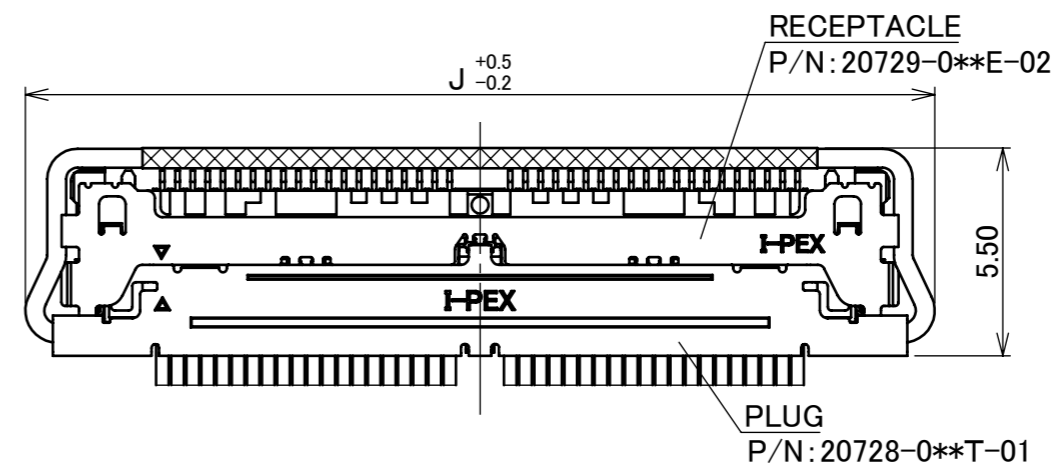
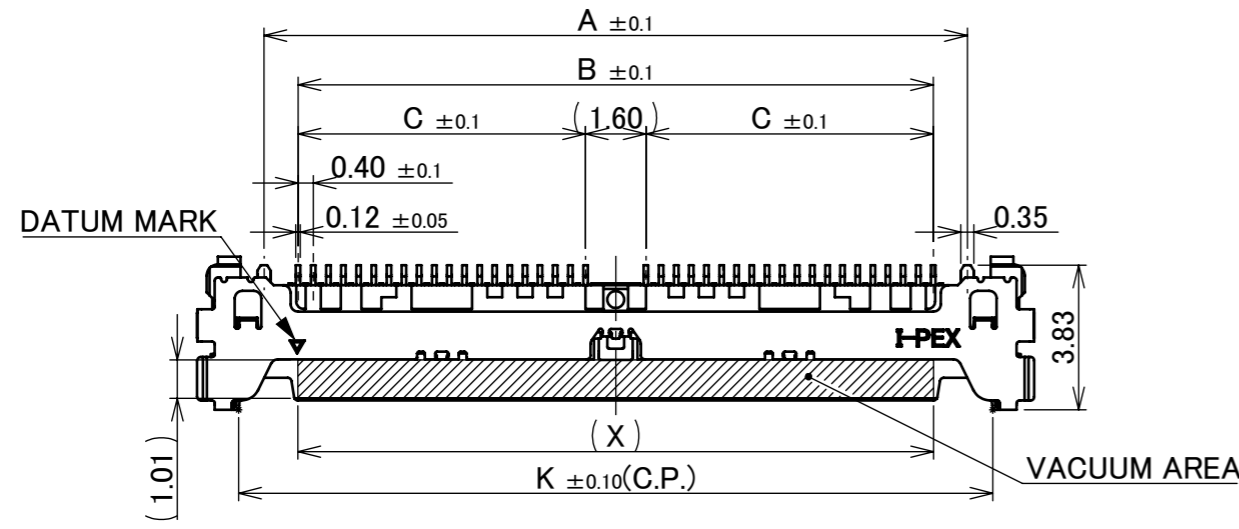
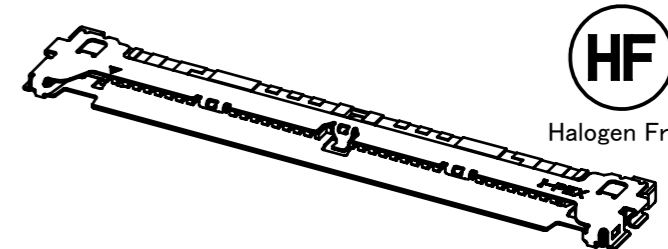
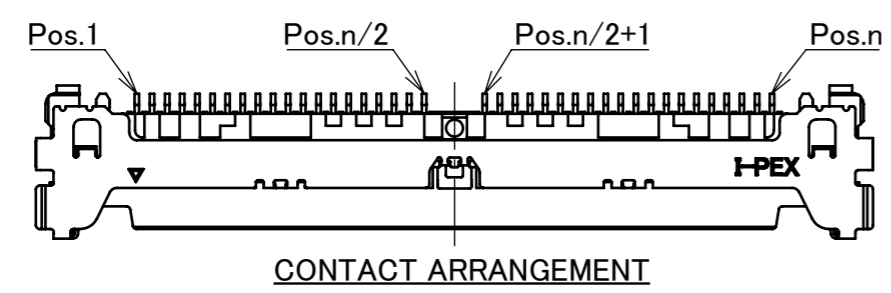


Recommended P/N 20729-0**E-02

PART NO.	Pos.	A	B	C	D	E	F	G	H	K	X
20729-030E-02	30	14.60	12.80	5.60	18.14	-	2.80	10.00	20.05	15.95	12.81
20729-040E-02	40	18.60	16.80	7.60	22.14	2.40	4.80	14.00	24.05	19.95	16.81



NO.	DISCRIPTION	MATERIAL	FINISH , REMARKS
3	SHELL	PHOSPHOR BRONZE	ALL OVER Ni 1.00 μ m MIN. SOLDERING AREA : Au 0.02 μ m MIN.
2	CONTACT	PHOSPHOR BRONZE	ALL OVER Ni 1.00 μ m MIN. CONTACT & SOLDERING AREA : Au 0.03 μ m MIN.
1	HOUSING	LCP	UL94V-0, BLACK, RED PHOSPHORUS FREE



REV.	ECN	BY	DATE	APP.	APP.	PROJECTION	SERIES No.	TITLE	SCALE	SHEET	REV.
8	Z240069	T.Ono	2024/01/17	T.M	ANGLE ±2°	6 OVER 30 MAX. ±0.3	R4	CABLINC® -CAL RECEPTACLE ASSEMBLY	5:1	I-PEX	8
7	Z240026	R.H	2024/01/10	H.I	6 MAX. ±0.2	30 OVER 120 MAX. ±0.5			UNIT		
6	Z220248	TSU	2022/03/08	H.I	GENERAL TOLERANCE.				mm		
5	Z201253	S.Y	2020/12/07	Y.S	DWG. M.Ishimaru	DATE 2017/04/12			SIZE		
4	Z200257	S.Y	2020/03/06	Y.S	CHK.			A3	1/5		
3	Z190170	S.Y	2019/02/08	Y.S	APP.			20729			
REVISION RECORD						H.Ikari					

Confidential C

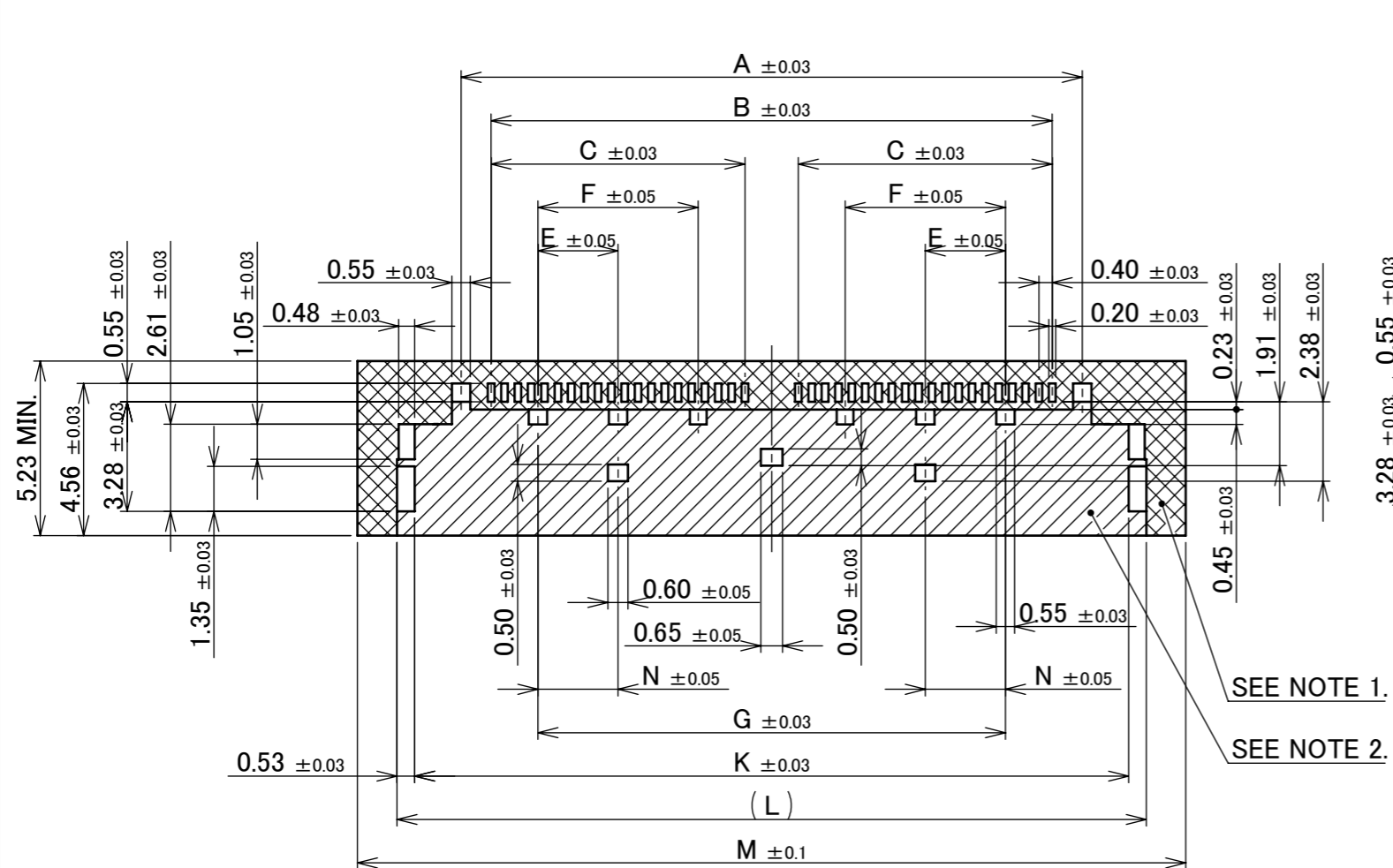
I-PEX Inc.

QKE-DFE06-02 REV.12

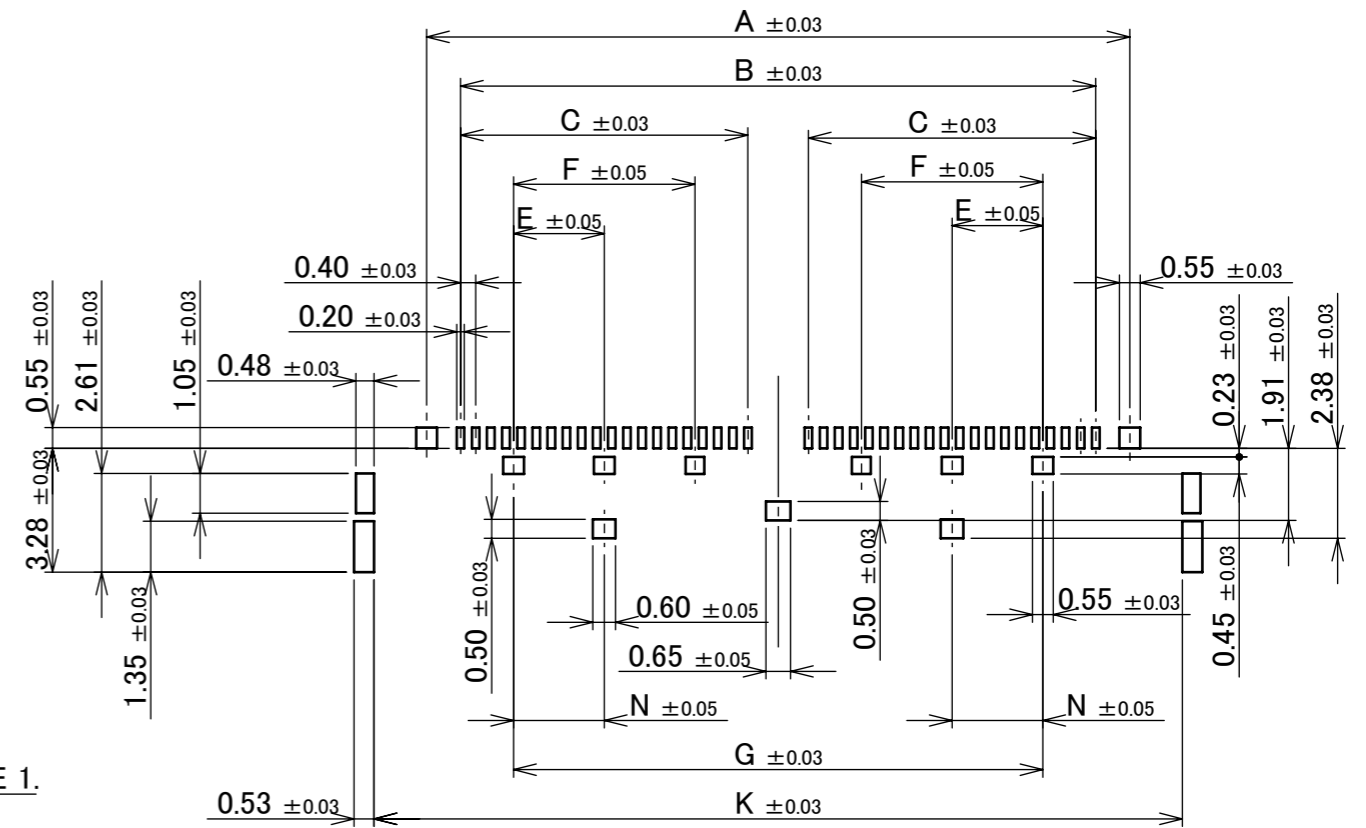
ITEMS	SPECIFICATION
APPLICABLE CABLE	MICRO-COAXIAL CABLE: AWG# 40,42,44 DISCRETE WIRE : AWG# 34,36
RATING VOLTAGE	100V AC (PER CONTACT PIN)
RATING AMPERAGE (FOR CONTACT)	0.15A AC/DC [AWG#44] PER CONTACT PIN/UP TO 40 CONTACTS 0.24A AC/DC [AWG#42] PER CONTACT PIN/UP TO 40 CONTACTS 0.30A AC/DC [AWG#40] PER CONTACT PIN/UP TO 32 CONTACTS 0.50A AC/DC [AWG#38] PER CONTACT PIN, FOR POWER/UP TO 14 CONTACTS 0.80A AC/DC [AWG#36] PER CONTACT PIN, FOR POWER/UP TO 5 CONTACTS 1.00A AC/DC [AWG#34] PER CONTACT PIN, FOR POWER/UP TO 4 CONTACTS ※ TESTING BY A REAL MACHINE IS RECOMMENDED BECAUSE TEMPERATURE RISE MAY AFFECTED BY ACTUAL SITUATION
OPERATING TEMPERATURE	233~358K(-40°C~+85°C)
OPERATING HUMIDITY	85% MAX.(NON-CONDENSING)
CONTACT RESISTANCE	INITIAL : 180mohm MAX.(AWG#34) / AFTER TEST : \triangle 40mohm MAX. 275mohm MAX.(AWG#36) 600mohm MAX.(AWG#40) 700mohm MAX.(AWG#42) 1080mohm MAX.(AWG#44)
GROUND SHELL RESISTANCE	INITIAL : 50mohm MAX. / AFTER TEST : \triangle 40mohm MAX.
INSULATION RESISTANCE	INITIAL : 1000Mohm MIN. / AFTER TEST : 500Mohm MIN.
DIELECTRIC WITHSTANDING VOLTAGE	AC250V 1min
DURABILITY	30 CYCLES
MATING FORCE (INITIAL / AFTER TEST)	30P : 12.0N MAX. 40P : 16.0N MAX.
UNMATING FORCE (INITIAL / AFTER TEST)	30P : 1.80N MIN. 40P : 2.40N MIN.
CABLE RETENTION FORCE	30P : 11.8N MIN. 40P : 12.4N MIN.
COPLANARITY	0.10 MAX.
PRODUCT SPECIFICATION	PRS-2371
TEST REPORT	TR-17036
PACKING STANDARD	PST-17058
INSTRUCTION MANUAL	HIM-17010
APPEARANCE CRITERIA No.	QLS-A***

ANGLE	$\pm 2^\circ$	6 OVER 30 MAX.	± 0.3	PROJECTION 	SERIES No. R4	CUSTOMER COPY		
	6 MAX.	± 0.2	30 OVER 120 MAX.					± 0.5
GENERAL TOLERANCE.				TITLE CABLIN [®] -CAL RECEPTACLE ASSEMBLY	SCALE	I-PEX		
DWG.	DATE							UNIT
CHK.								mm
APP.								SIZE SHEET REV.
				DWG. No.	20729	A3	2/5	8

PART NO.	Pos.	A	B	C	E	F	G	K	L	M	N
20729-030E-02	30	14.60	12.80	5.60	-	2.80	10.00	17.38	18.44	20.80	1.40
20729-040E-02	40	18.60	16.80	7.60	2.40	4.80	14.00	21.38	22.44	24.80	2.40



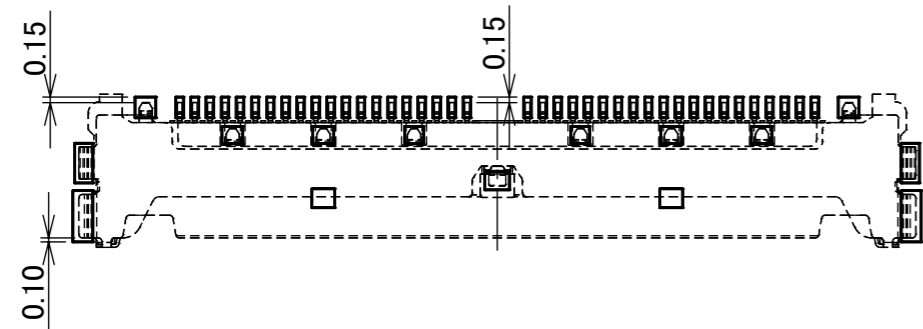
RECOMMENDED PCB LAYOUT



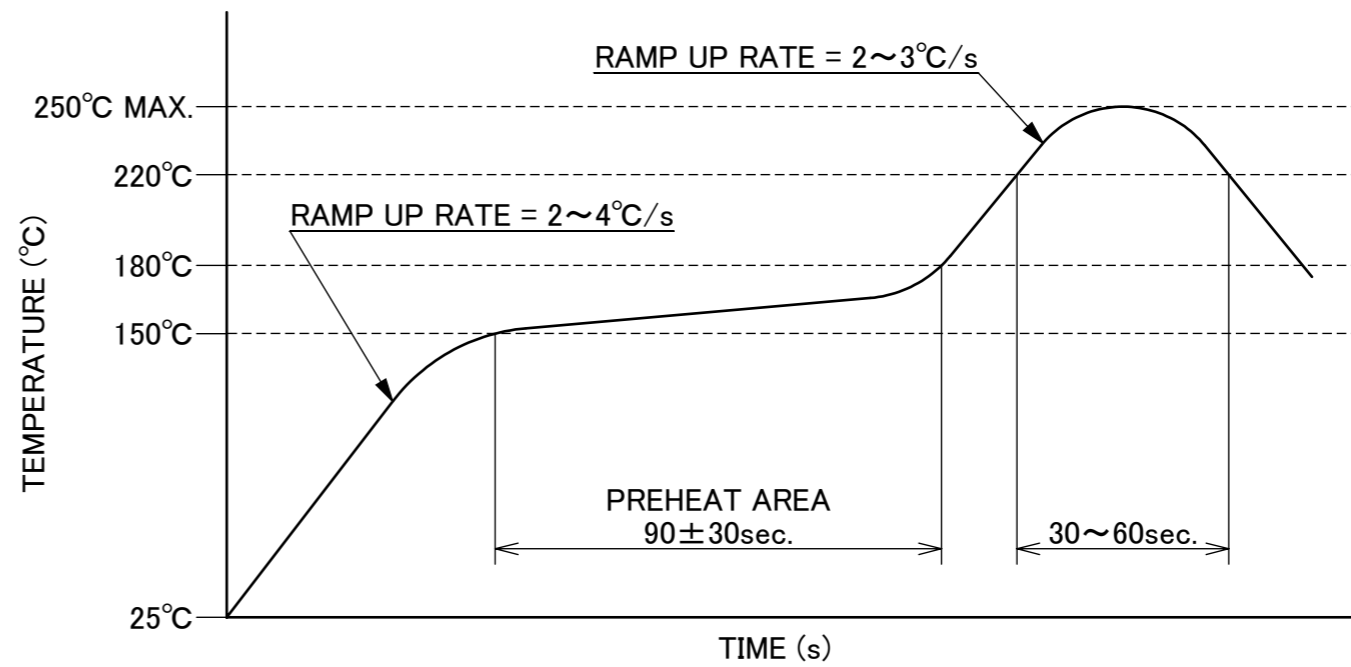
RECOMMENDED METAL MASK LAYOUT
METAL MASK THICKNESS : t=0.10 mm

- NOTES.
1. DO NOT MOUNT ANOTHER COMPONENTS IN THIS AREA.
2. SOLDER RESIST MUST BE APPLIED TO THIS AREA.

ANGLE	±2°	6 OVER 30 MAX.	±0.3	PROJECTION	SERIES No.	CUSTOMER COPY	
6 MAX.	±0.2	30 OVER 120 MAX.	±0.5		R4		
GENERAL TOLERANCE.				TITLE	SCALE	I-PEX	
DWG.	DATE			CABLIN [®] -CAL RECEPTACLE ASSEMBLY	5:1		
CHK.					UNIT		
APP.				DWG. No.	SIZE	SHEET	REV.
				20729	A3	3/5	8



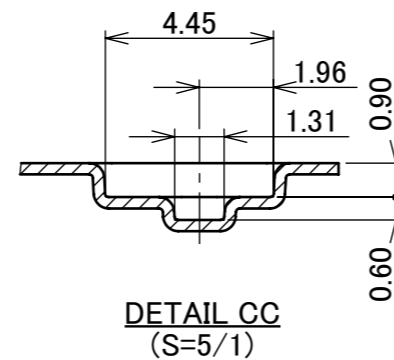
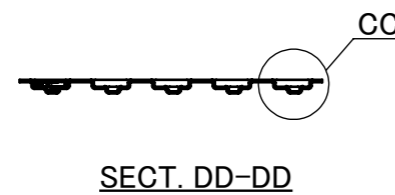
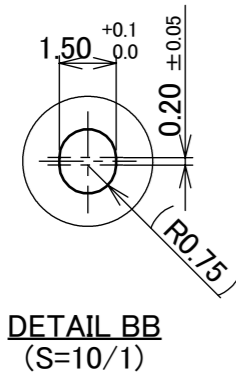
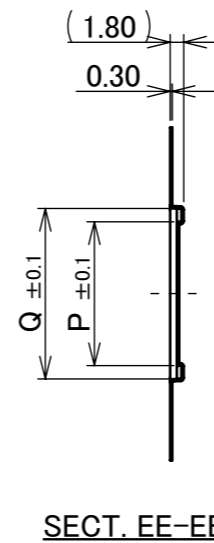
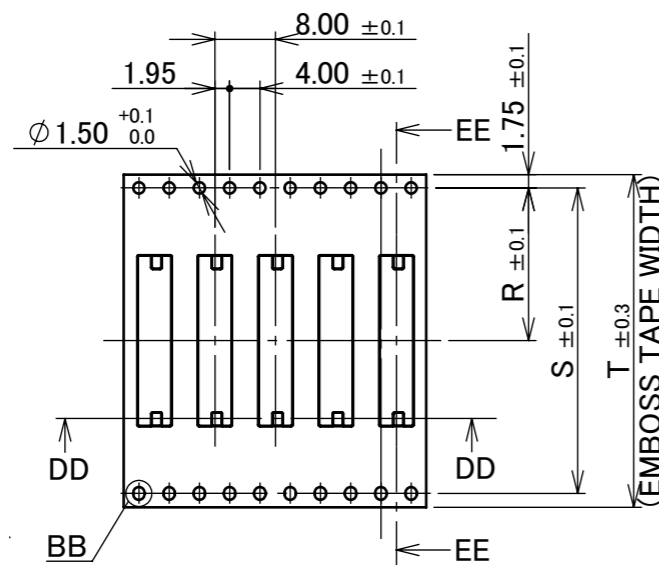
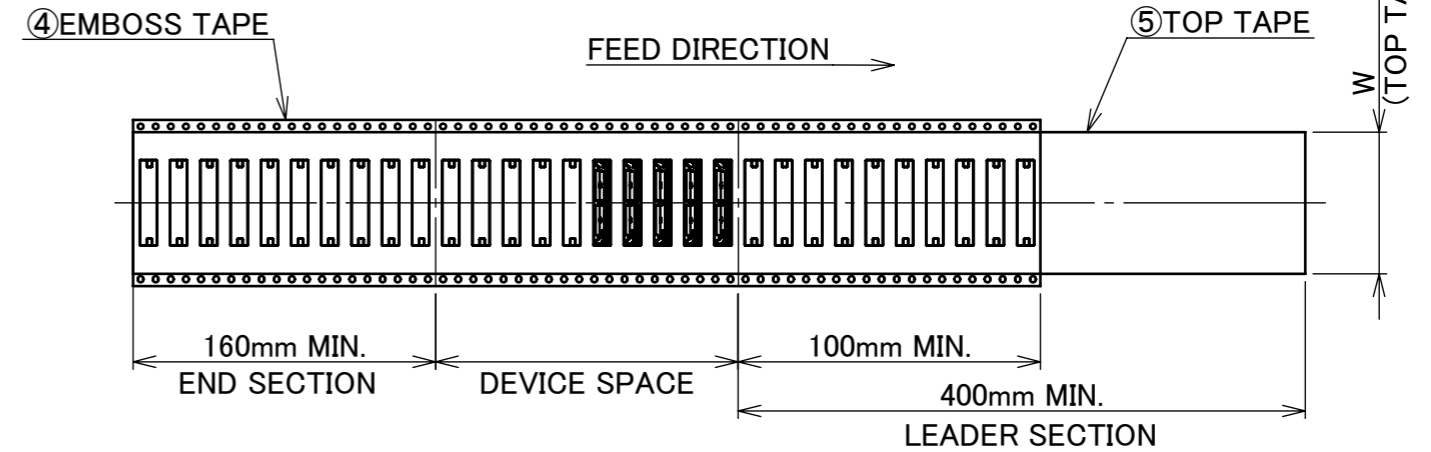
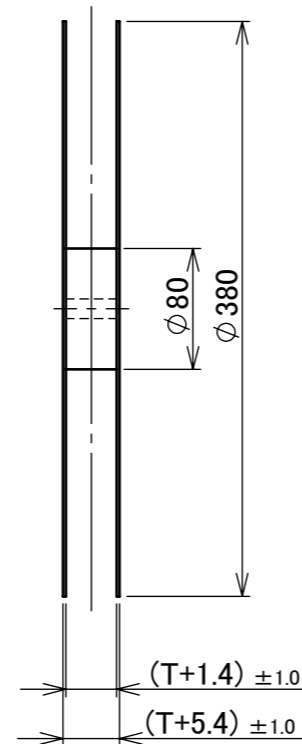
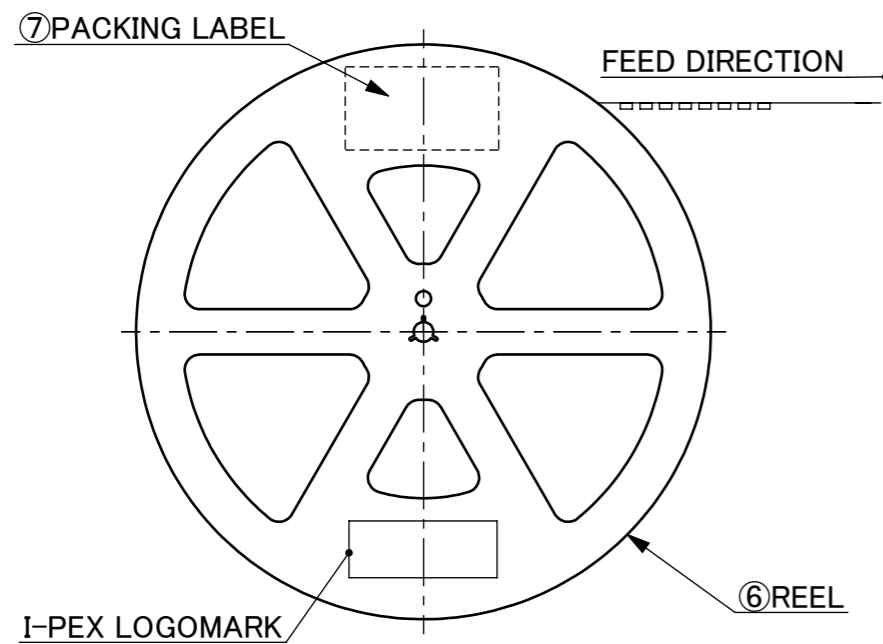
CONNECTOR ON RECOMMENDED FOOTPRINT PATTERN



REFLOW TEMPERATURE PROFILE
 SENJU METAL INDUSTRY CO., LTD. : M705-SHF(Sn96.5 Ag3.0 Cu0.5)

ANGLE	±2°	6 OVER 30 MAX.	±0.3	PROJECTION 	SERIES No. R4	CUSTOMER COPY		
6 MAX.	±0.2	30 OVER 120 MAX.	±0.5					
GENERAL TOLERANCE.				TITLE CABLIN [®] -CAL RECEPTACLE ASSEMBLY	SCALE 5:1	UNIT I-PEX		
DWG.	DATE							
CHK.								
APP.								
				DWG. No.	20729	SIZE A3	SHEET 4/5	REV. 8

PART NO.	P	Q	R	S	T	W	QTY. PER EMBOSS REEL (PIECES / REEL)	QTY. PER PACKING CARTON (REELS / CARTON)
20729-030E-0#	15.00	18.54	14.20	28.40	32.00	25.50	6000/ REEL	4 / CARTON = 24000
20729-040E-0#	19.00	22.54	20.20	40.40	44.00	37.50		3 / CARTON = 18000



- NOTES.
3. TAPING SPECIFICATION FOLLOWS JIS C 0806 (IEC 60286-3).
4. MAKE EMPTY SECTION OF LEADER AND END ON EACH END OF THE TAPE.
5. TOP TAPE SHALL NOT STICK OUT FROM EMBOSS TAPE.
6. TOP TAPE SHALL NOT COVER FEED HOLE.

NO.	DISCRIPTION	MATERIAL	FINISH , REMARKS
7	PACKING LABEL	-	-
6	REEL	PS	ANTI-STATIC TYPE BLACK
5	TOP TAPE	PET t=0.062 TRANSPARENCY	ANTI-STATIC TYPE
4	EMBOSS TAPE	PS t=0.3 TRANSPARENCY	ANTI-STATIC TYPE

ANGLE	±2°	6 OVER 30 MAX.	±0.3	PROJECTION	SERIES No.	CUSTOMER COPY			
6 MAX.	±0.2	30 OVER 120 MAX.	±0.5		R4	TITLE			
GENERAL TOLERANCE.				TITLE		SCALE	I-PEX		
DWG.	DATE			CABLINER [®] -CAL RECEPTACLE ASSEMBLY		1:X			
CHK.						UNIT			
APP.				DWG. No. 20729		mm			
						SIZE	SHEET	REV.	
						A3	5/5	8	