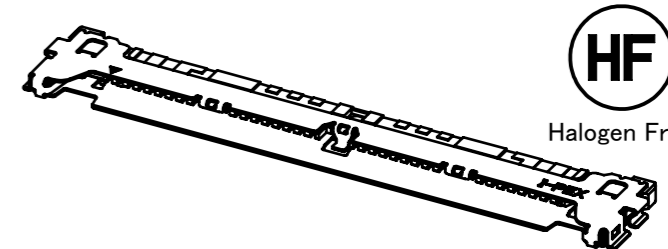
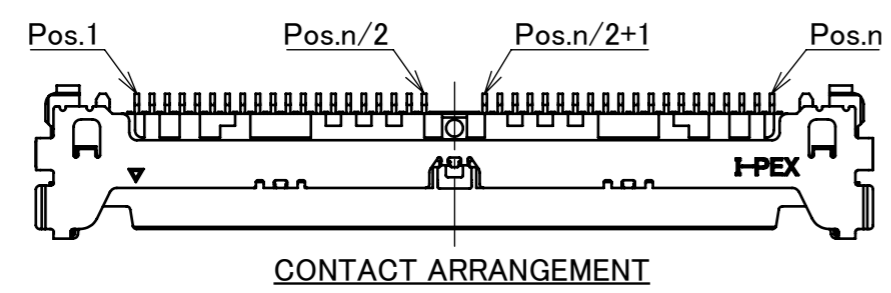
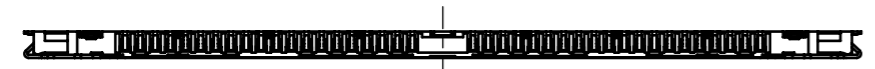
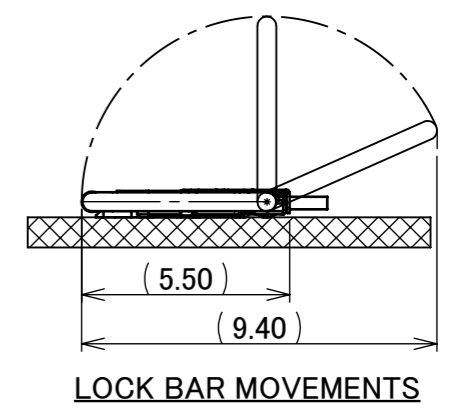
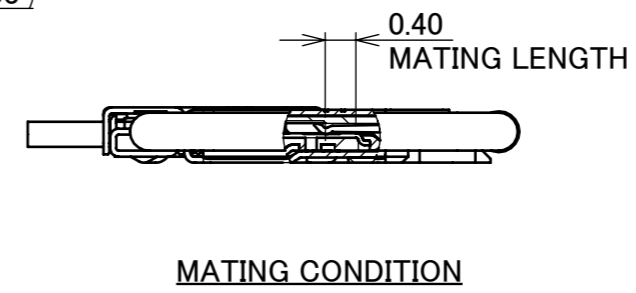
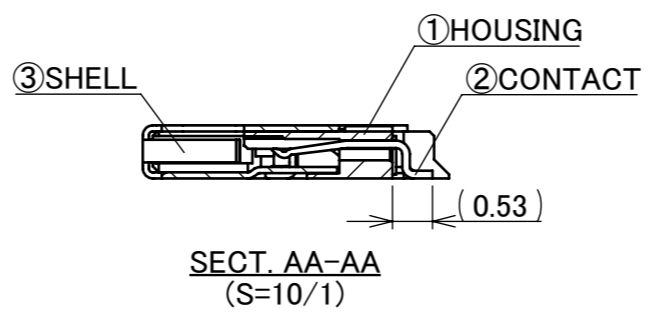
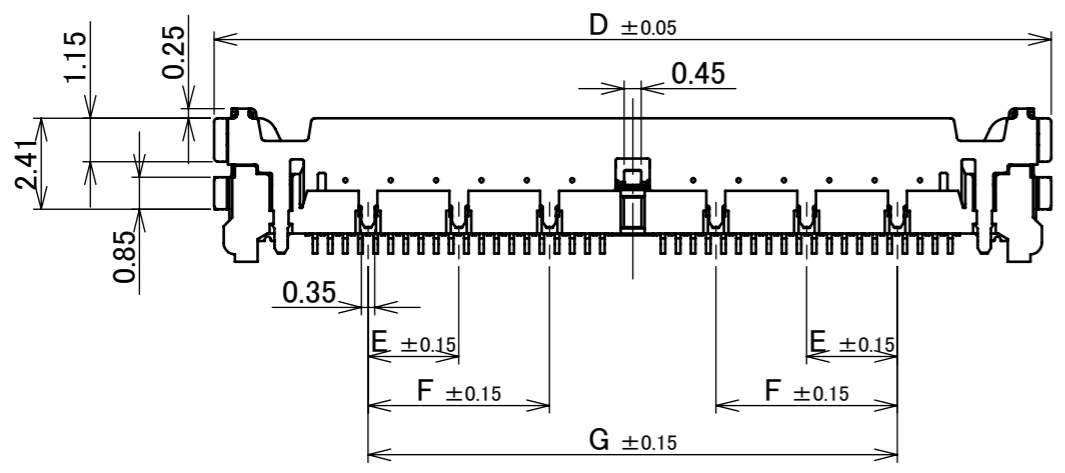
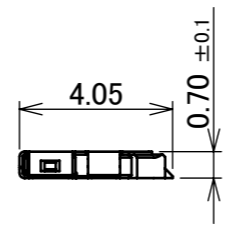
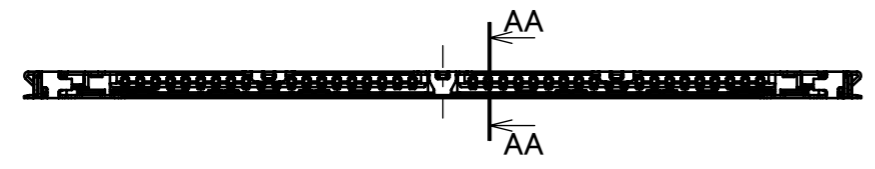
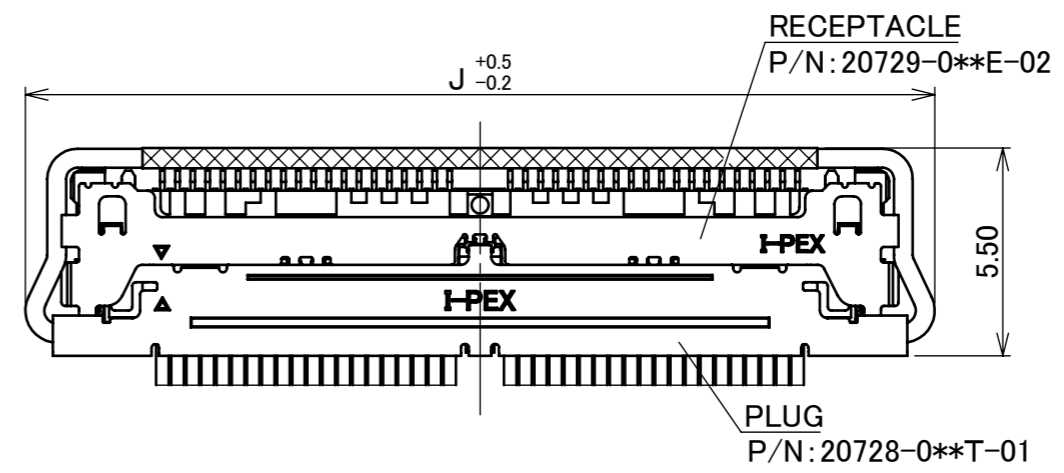
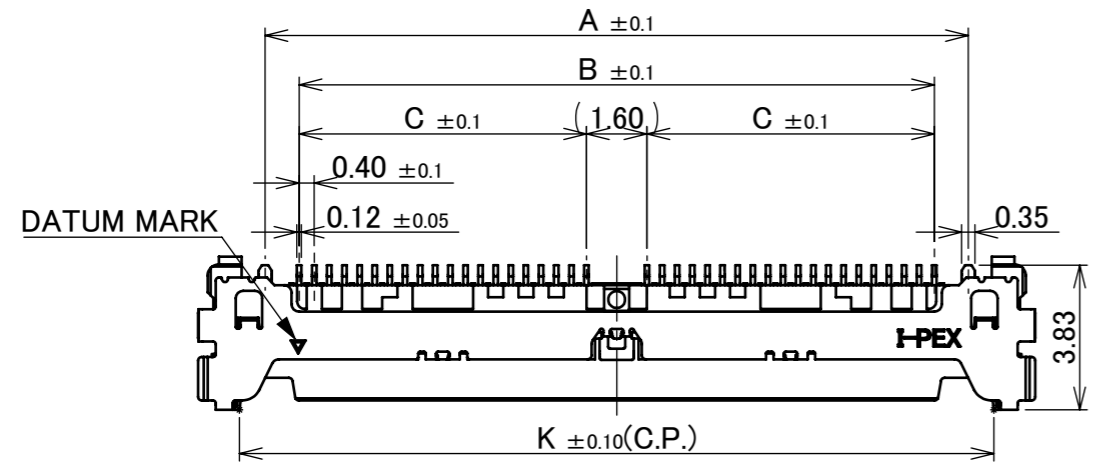


Recommended P/N 20729-0\*\*E-02

PART NO.	Pos.	A	B	C	D	E	F	G	H	K
20729-030E-02	30	14.60	12.80	5.60	18.14	-	2.80	10.00	20.05	15.95
20729-040E-02	40	18.60	16.80	7.60	22.14	2.40	4.80	14.00	24.05	19.95



Halogen Free RoHS Compliant



NO.	DISCRIPTION	MATERIAL	FINISH , REMARKS
3	SHELL	PHOSPHOR BRONZE	ALL OVER Ni 1.00 μ m MIN. SOLDERING AREA : Au 0.02 μ m MIN.
2	CONTACT	PHOSPHOR BRONZE	ALL OVER Ni 1.00 μ m MIN. CONTACT & SOLDERING AREA : Au 0.03 μ m MIN.
1	HOUSING	LCP	UL94V-0, BLACK, RED PHOSPHORUS FREE

REV.	ECN	BY	DATE	APP.	APP.	APP.	APP.	PROJECTION	SERIES No.	TITLE	SCALE	SHEET	REV.
6	Z220248	TSU	2022/03/08	H.I	ANGLE	±2°	6 OVER 30 MAX.	±0.3	R4	CABLINE® -CAL RECEPTACLE ASS'Y	5:1	A3	6
5	Z201253	S.Y	2020/12/07	Y.S	6 MAX.	±0.2	30 OVER 120 MAX.	±0.5					
4	Z200257	S.Y	2020/03/06	Y.S	GENERAL TOLERANCE.				DWG. No. 20729	1/5	6		
3	Z190170	S.Y	2019/02/08	Y.S	DWG.	DATE		H.Ikari					
2	Z181287	M.I	2018/08/01	H.I	M.Ishimaru 2017/04/12								
1	Z180190	M.I	2018/02/14	H.I	CHK.	-							
REVISION RECORD					H.Ikari			20729		1/5		6	

Confidential C

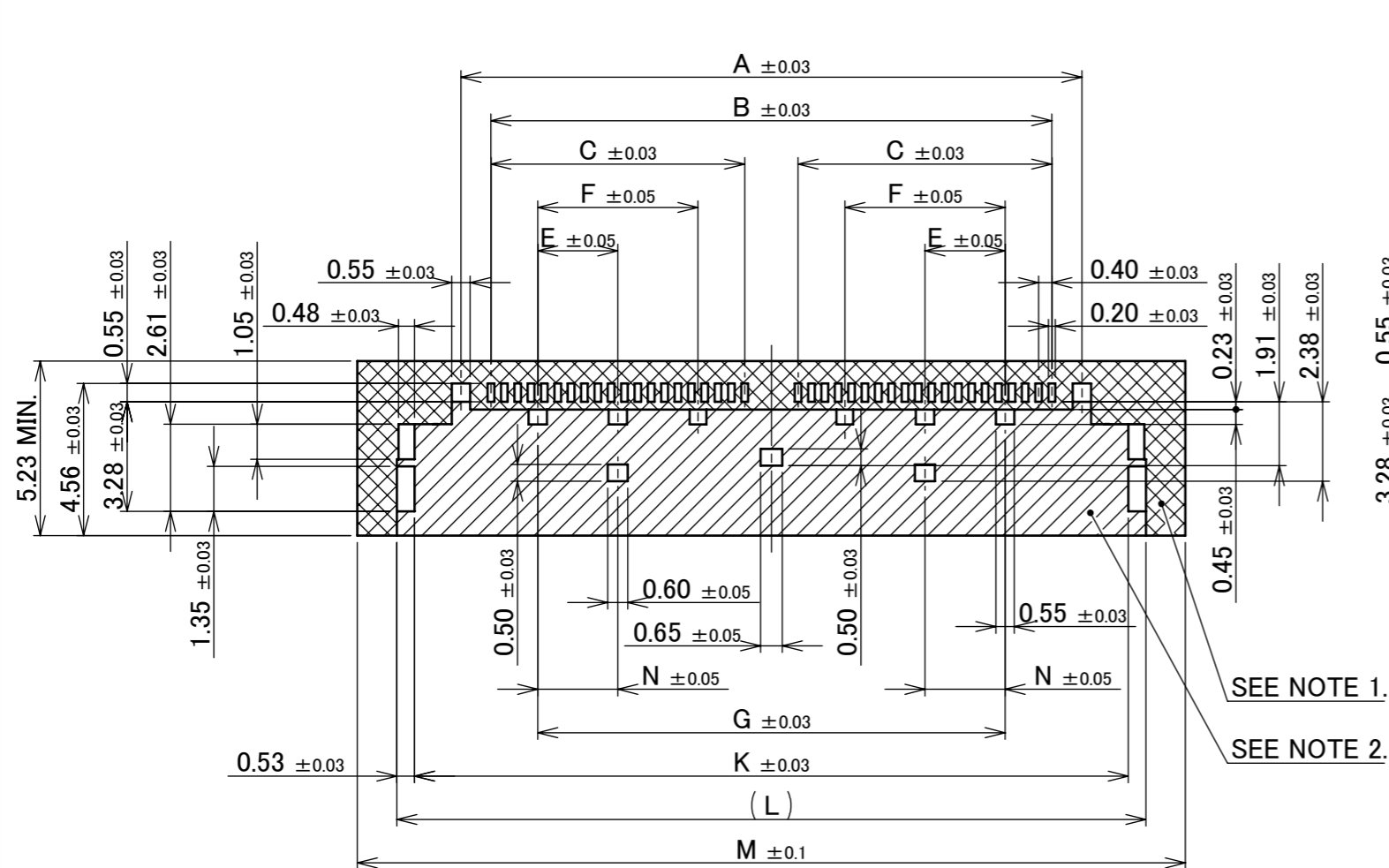
I-PEX Inc.

QKE-DFE06-02 REV.12

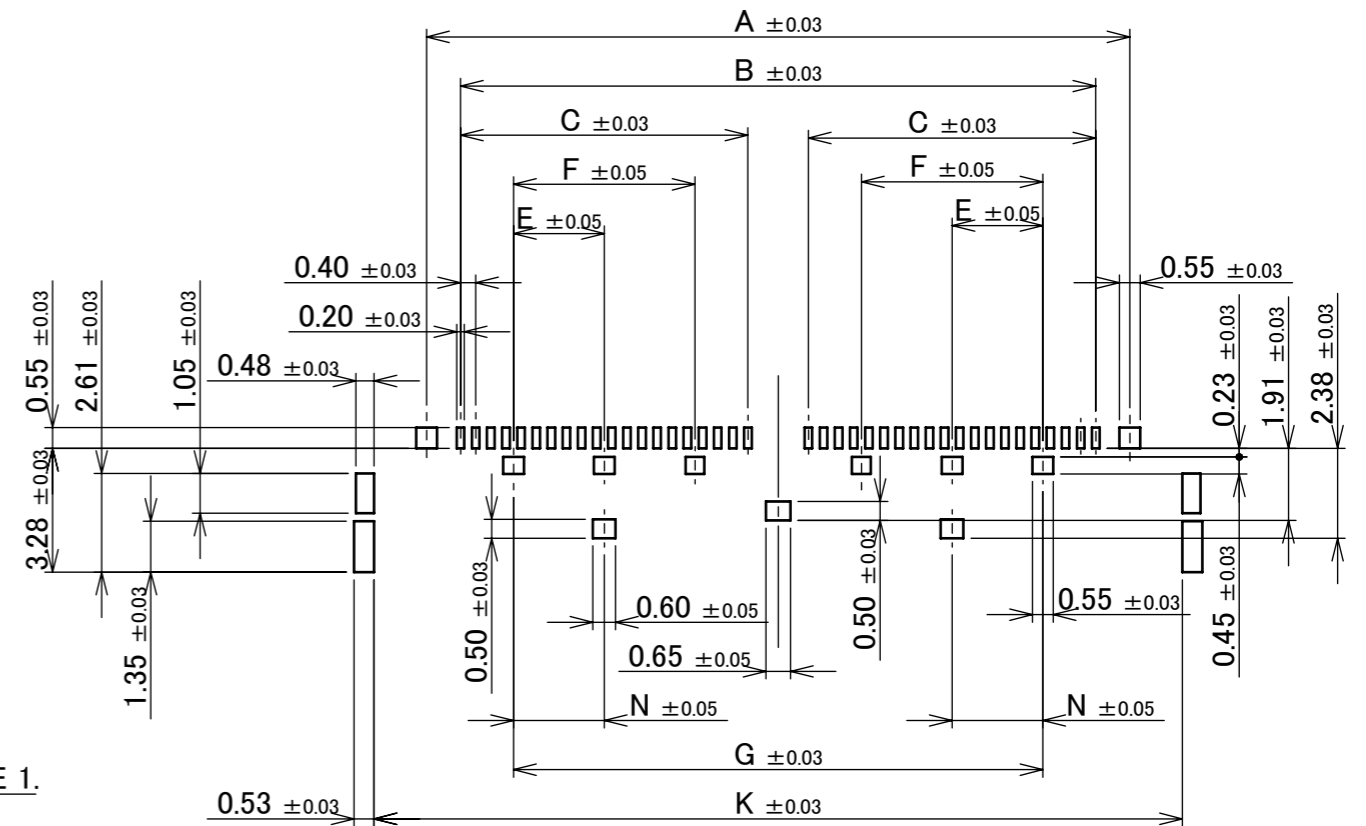
ITEMS	SPECIFICATION
APPLICABLE CABLE	MICRO COAX : AWG# 40,42,44 DISCRETE : AWG# 34,36
RATING VOLTAGE	100V AC (PER CONTACT PIN)
RATING AMPERAGE (FOR CONTACT)	0.10A AC/DC [AWG#44] 0.24A AC/DC [AWG#42] 0.30A AC/DC [AWG#40] 0.80A AC/DC [AWG#36] 1.00A AC/DC [AWG#34]  ※ TESTING BY A REAL MACHINE IS RECOMMENDED BECAUSE TEMPERATURE RISE MAY AFFECTED BY ACTUAL SITUATION
OPERATING TEMPERATURE	233~358K(-40°C~+85°C)
OPERATING HUMIDITY	85% MAX.(NON-CONDENSING)
CONTACT RESISTANCE	INITIAL : 180mohm MAX.(AWG#34) / AFTER TEST : $\triangleleft$ 40mohm MAX. 275mohm MAX.(AWG#36) 600mohm MAX.(AWG#40) 700mohm MAX.(AWG#42) 1080mohm MAX.(AWG#44)
GROUND SHELL RESISTANCE	INITIAL : 50mohm MAX. / AFTER TEST : $\triangleleft$ 40mohm MAX.
INSULATION RESISTANCE	INITIAL : 1000Mohm MIN. / AFTER TEST : 500Mohm MIN.
DIELECTRIC WITHSTANDING VOLTAGE	AC250V 1min
DURABILITY	30 CYCLES
MATING FORCE (INITIAL / AFTER TEST)	30P : 12.0N MAX. 40P : 16.0N MAX.
UNMATING FORCE (INITIAL / AFTER TEST)	30P : 1.80N MIN. 40P : 2.40N MIN.
CABLE RETENTION FORCE	30P : 11.8N MIN. 40P : 12.4N MIN.
COPLANARITY	0.10 MAX.
PRODUCT SPECIFICATION	PRS-2371
TEST REPORT	TR-17036
PACKING STANDARD	PST-17058
INSTRUCTION MANUAL	HIM-17010
APPEARANCE CRITERIA No.	QLS-A***

ANGLE	$\pm 2^\circ$	6 OVER 30 MAX.	$\pm 0.3$	PROJECTION 	SERIES No. R4	CUSTOMER COPY		
	6 MAX.	$\pm 0.2$	30 OVER 120 MAX.					$\pm 0.5$
GENERAL TOLERANCE.				TITLE CABLIN <sup>®</sup> -CAL RECEPTACLE ASS'Y	SCALE 	I-PEX		
DWG.	DATE							
CHK.								
APP.								
				DWG. No.	20729	SIZE A3	SHEET 2/5	REV. 6

PART NO.	Pos.	A	B	C	E	F	G	K	L	M	N
20729-030E-02	30	14.60	12.80	5.60	-	2.80	10.00	17.38	18.44	20.80	1.40
20729-040E-02	40	18.60	16.80	7.60	2.40	4.80	14.00	21.38	22.44	24.80	2.40



RECOMMENDED PCB LAYOUT



RECOMMENDED METAL MASK LAYOUT  
METAL MASK THICKNESS : t=0.10 mm

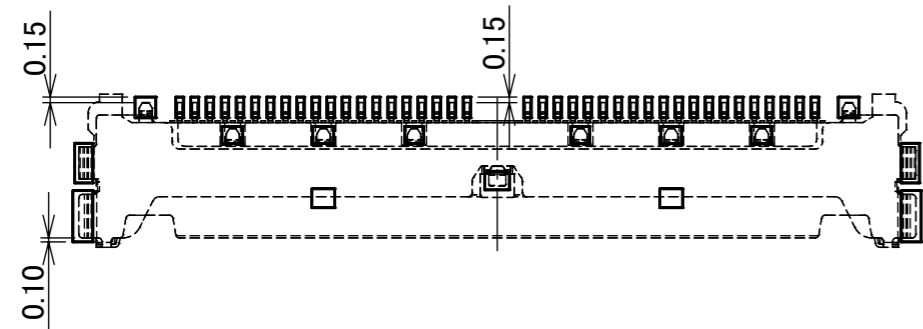
NOTES.

1. THIS AREA CANNOT MOUNT ANOTHER COMPONENTS.
2. SOLDER RESIST SHALL BE APPLIED TO PREVENT SHORT CIRCUITS WHEN PLACING SIGNAL LINES ON GROUND AREA.

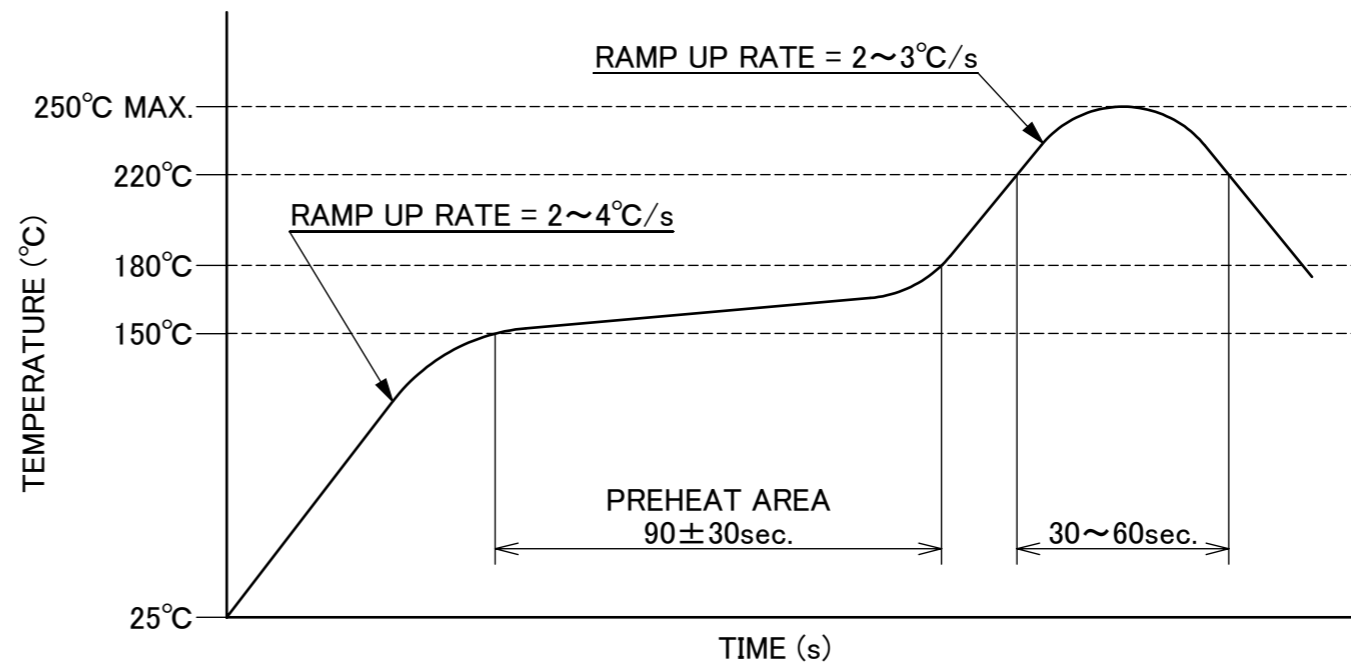
SEE NOTE 1.

SEE NOTE 2.

ANGLE	±2°	6 OVER 30 MAX.	±0.3	PROJECTION	SERIES No.	CUSTOMER COPY	
6 MAX.	±0.2	30 OVER 120 MAX.	±0.5		R4		
GENERAL TOLERANCE.				TITLE	SCALE	I-PEX	
DWG.	DATE			CABLIN <sup>®</sup> -CAL RECEPTACLE ASS'Y	5:1		
CHK.					UNIT		
APP.					mm		
				DWG. No.	SIZE	SHEET	REV.
				20729	A3	3/5	6



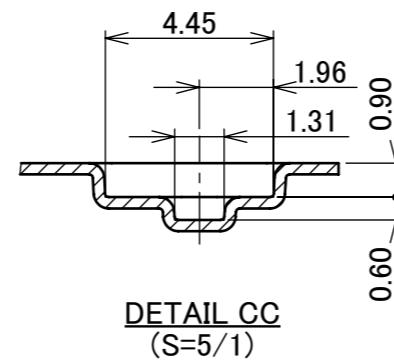
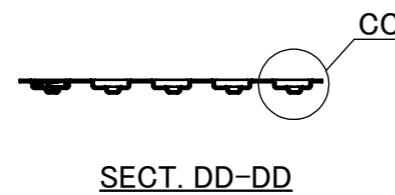
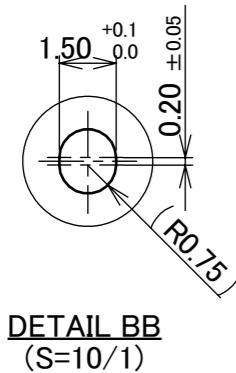
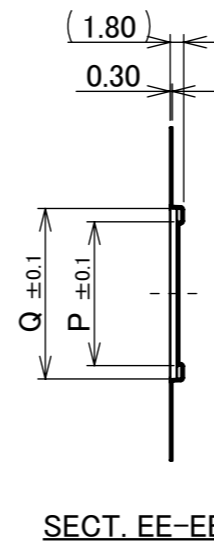
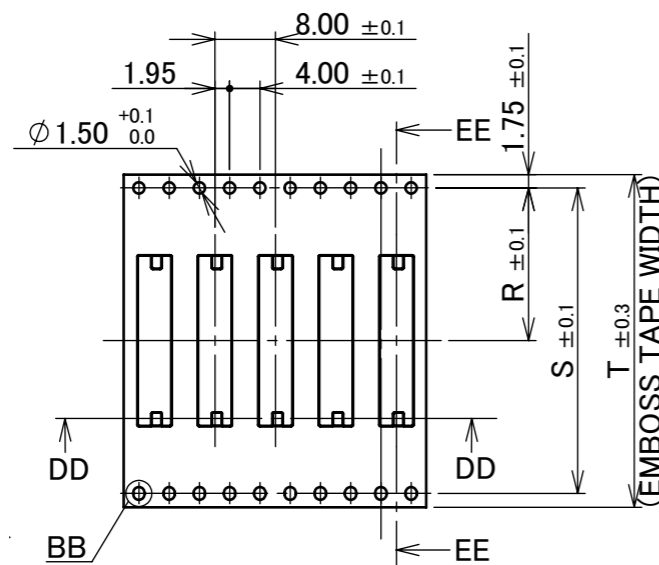
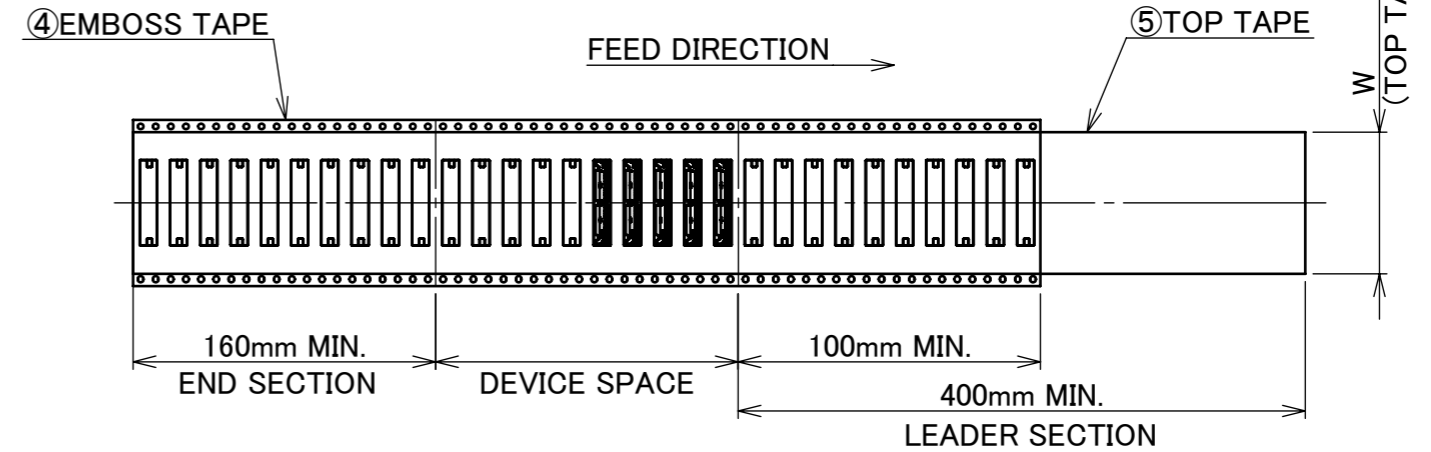
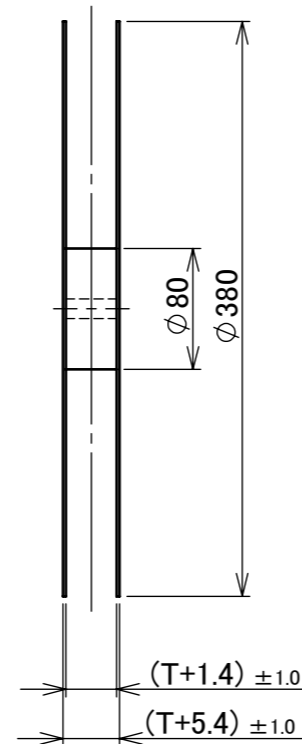
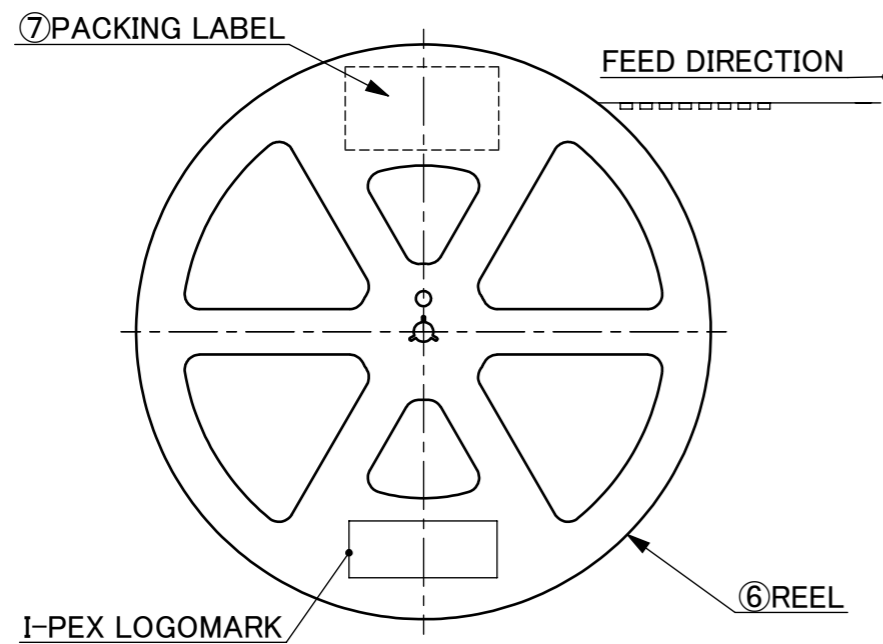
CONNECTOR ON RECOMMENDED FOOTPRINT PATTERN



REFLOW TEMPERATURE PROFILE  
 SENJU METAL INDUSTRY CO., LTD. : M705-SHF(Sn96.5 Ag3.0 Cu0.5)

ANGLE	±2°	6 OVER 30 MAX.	±0.3	PROJECTION 	SERIES No. R4	CUSTOMER COPY			
6 MAX.	±0.2	30 OVER 120 MAX.	±0.5			SCALE 5:1	<b>I-PEX</b>		
GENERAL TOLERANCE.				TITLE CABLIN <sup>®</sup> -CAL RECEPTACLE ASS'Y		UNIT mm			
DWG.	DATE			DWG. No. 20729		SIZE A3	SHEET 4/5	REV. 6	
CHK.									
APP.									

PART NO.	P	Q	R	S	T	W	QTY. PER EMBOSS REEL (PIECES / REEL)	QTY. PER PACKING CARTON (REELS / CARTON)
20729-030E-0#	15.00	18.54	14.20	28.40	32.00	25.50	6000/ REEL	4 / CARTON = 24000
20729-040E-0#	19.00	22.54	20.20	40.40	44.00	37.50		3 / CARTON = 18000



- NOTES.  
3. TAPING SPECIFICATION FOLLOWS JIS C 0806 (IEC 60286-3).  
4. MAKE EMPTY SECTION OF LEADER AND END ON EACH END OF THE TAPE.  
5. TOP TAPE SHALL NOT STICK OUT FROM EMBOSS TAPE.  
6. TOP TAPE SHALL NOT COVER FEED HOLE.

NO.	DISCRIPTION	MATERIAL	FINISH , REMARKS
7	PACKING LABEL	-	-
6	REEL	PS	ANTI-STATIC TYPE BLACK
5	TOP TAPE	PET t=0.062 TRANSPARENCY	ANTI-STATIC TYPE
4	EMBOSS TAPE	PS t=0.3 TRANSPARENCY	ANTI-STATIC TYPE

ANGLE	$\pm 2^\circ$	6 OVER 30 MAX.	$\pm 0.3$	PROJECTION	SERIES No.	CUSTOMER COPY			
6 MAX.	$\pm 0.2$	30 OVER 120 MAX.	$\pm 0.5$		R4	TITLE			
GENERAL TOLERANCE.				TITLE		SCALE	<b>I-PEX</b>		
DWG.	DATE			CABLIN <sup>®</sup> -CAL RECEPTACLE ASS'Y		1:X			
CHK.						UNIT			
APP.				DWG. No. 20729		mm			
						SIZE	SHEET	REV.	
						A3	5/5	6	