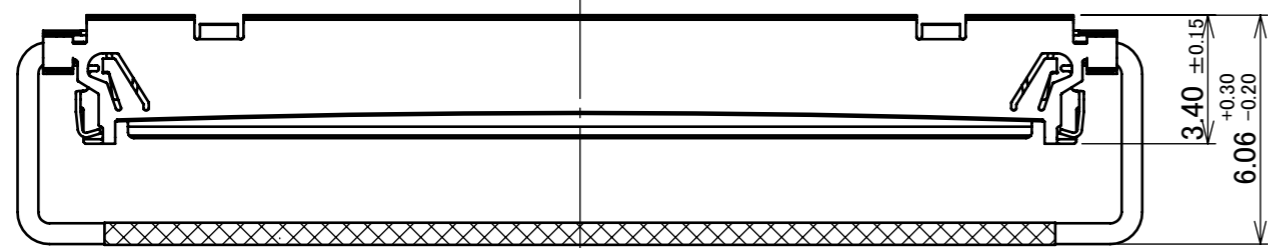
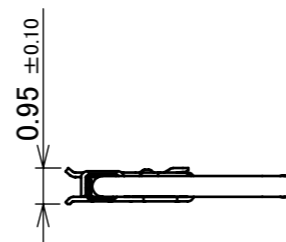
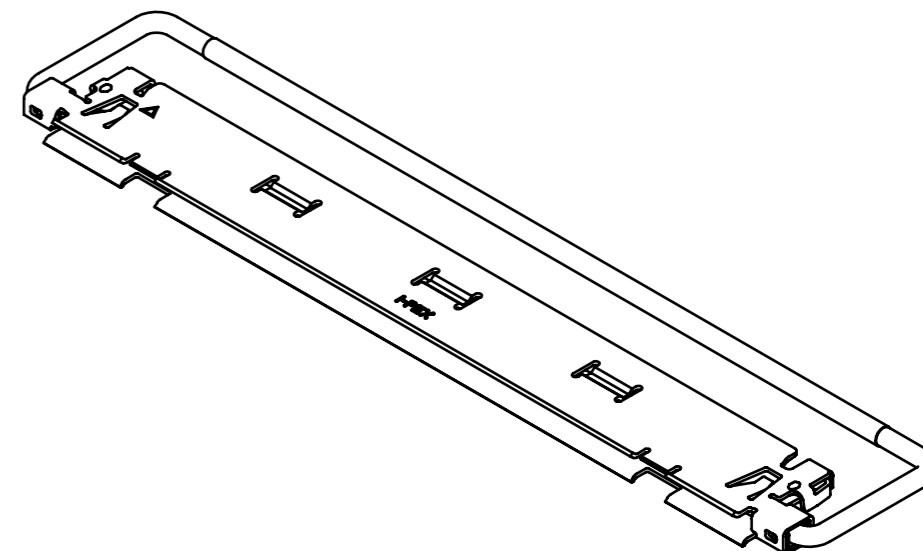
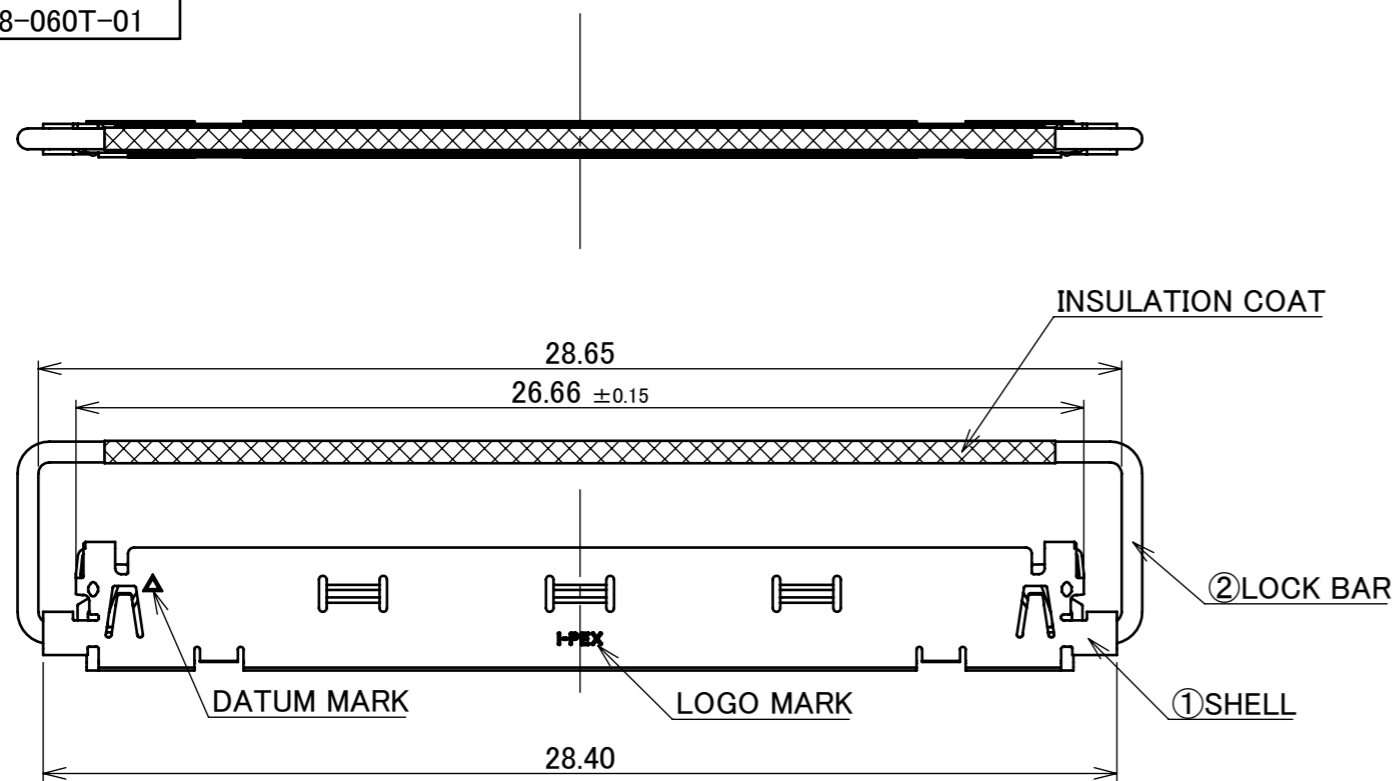


PART NO.  
20858-060T-01



2	LOCK BAR	SUS	-
1	SHELL	PHOSPHOR BRONZE	PARTIAL Au 0.003 μm MIN. OVER Ni 1.00 μm MIN.
NO.	DISCRIPTION	MATERIAL	FINISH , REMARKS

					ANGLE	±2°	6 OVER 30 MAX.	±0.3	PROJECTION	SERIES No.	CUSTOMER COPY
					6 MAX.	±0.2	30 OVER 120 MAX.	±0.5		R1	
GENERAL TOLERANCE.									TITLE	SCALE	I-PEX
2	Z200573	R.F	June/04/'20	Y.S	DWG.	DATE	CABLINER <sup>®</sup> -CAF SHELL ASS'Y		5:1		
1	Z190260	Y.Sasa	Feb./22/'19	Y.S	Y.Sasa	2018/12/25			UNIT		
0	Z181001	Y.Sasa	Dec./25/'18		CHK.	DATE			mm		
REV.	ECN	BY	DATE	APP.	APP.	DATE	DWG. No.	20858	SIZE	SHEET 1/5	REV. 2
REVISION RECORD					H.Ikari	2018/12/26			A3		

# FPC ASS'Y STATE

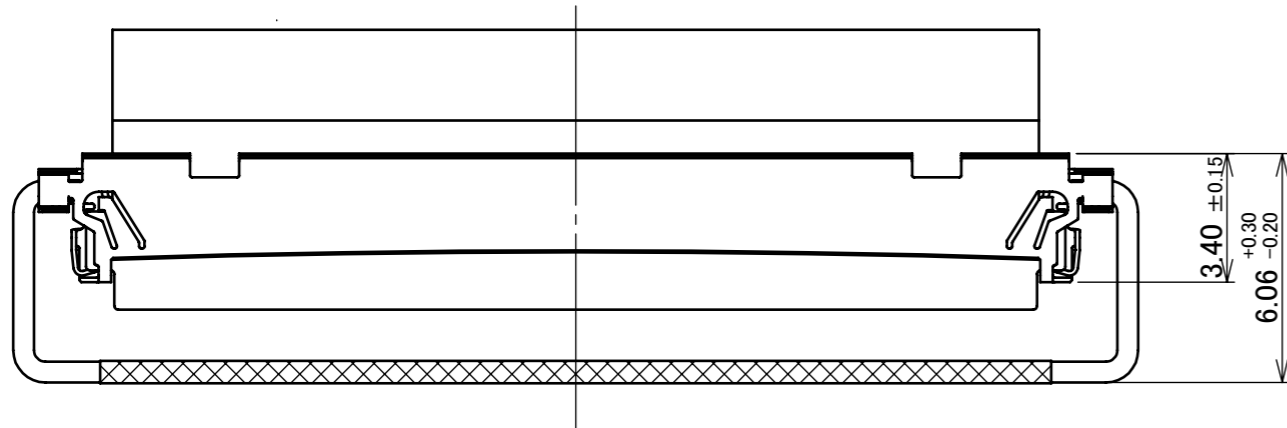
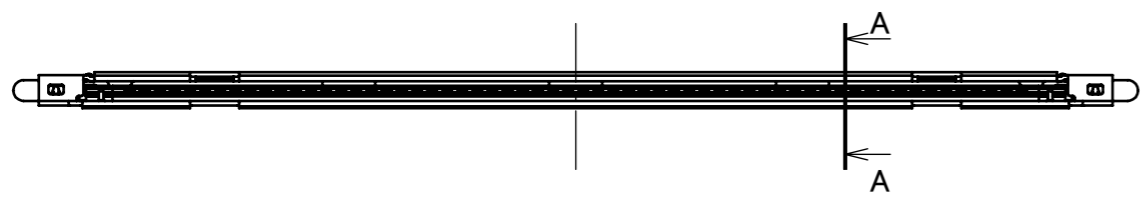
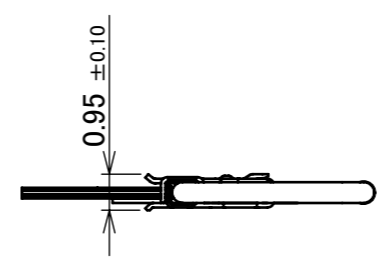
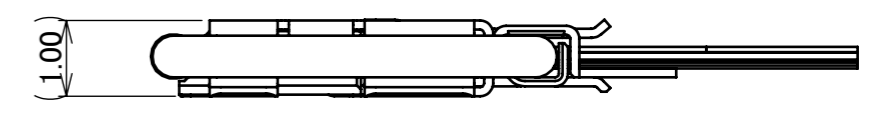
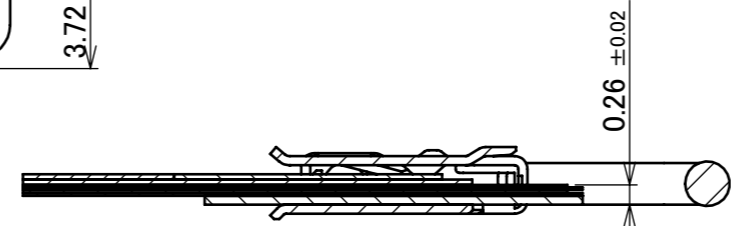
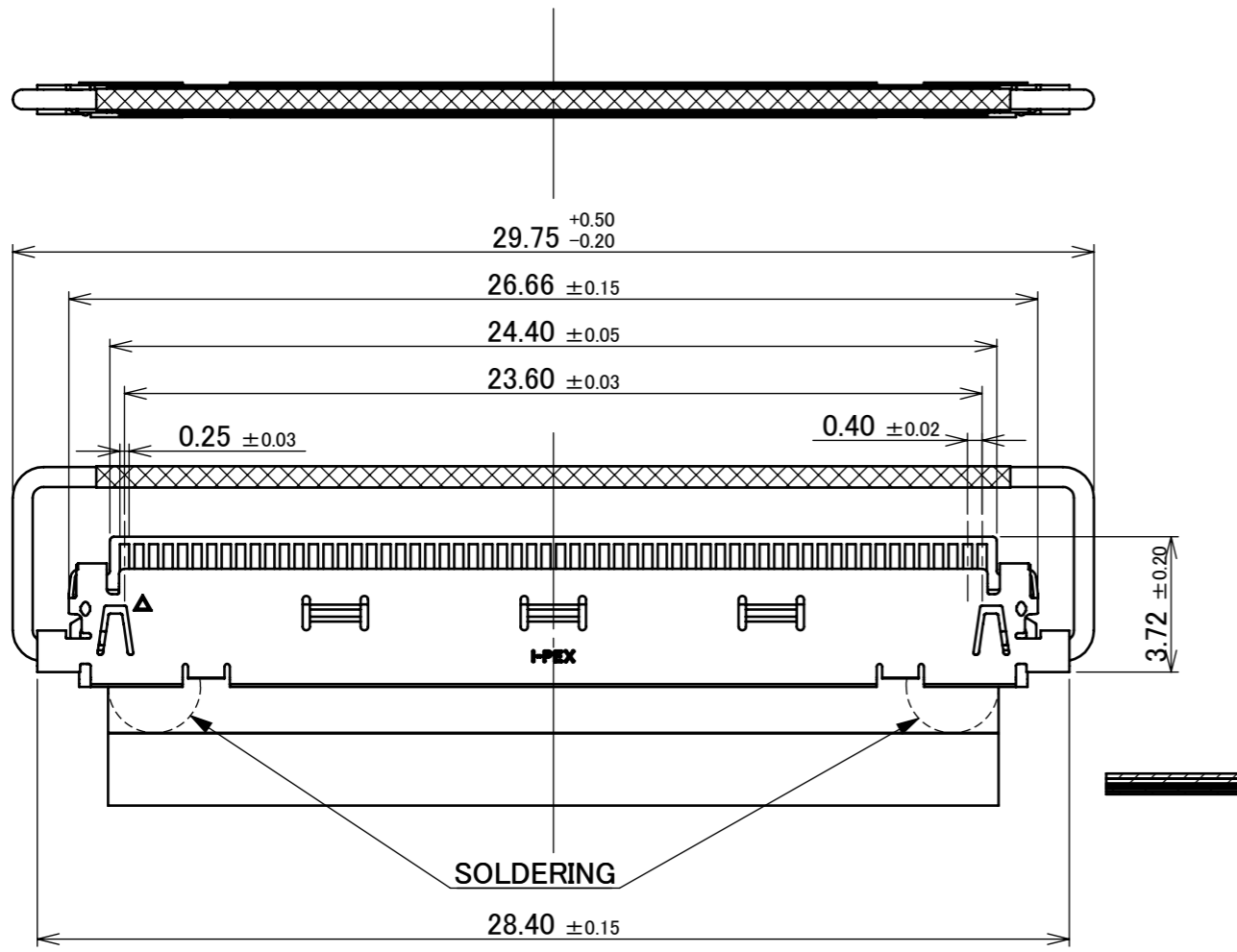


PLUG SHELL ASS'Y : CABLINE-CAF  
P/N : 20858-060T-01

RECEPTACLE : CABLINE-CA  
P/N : 20525-#60E-0##

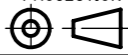
MATING CONDITION  
(S=10:1)

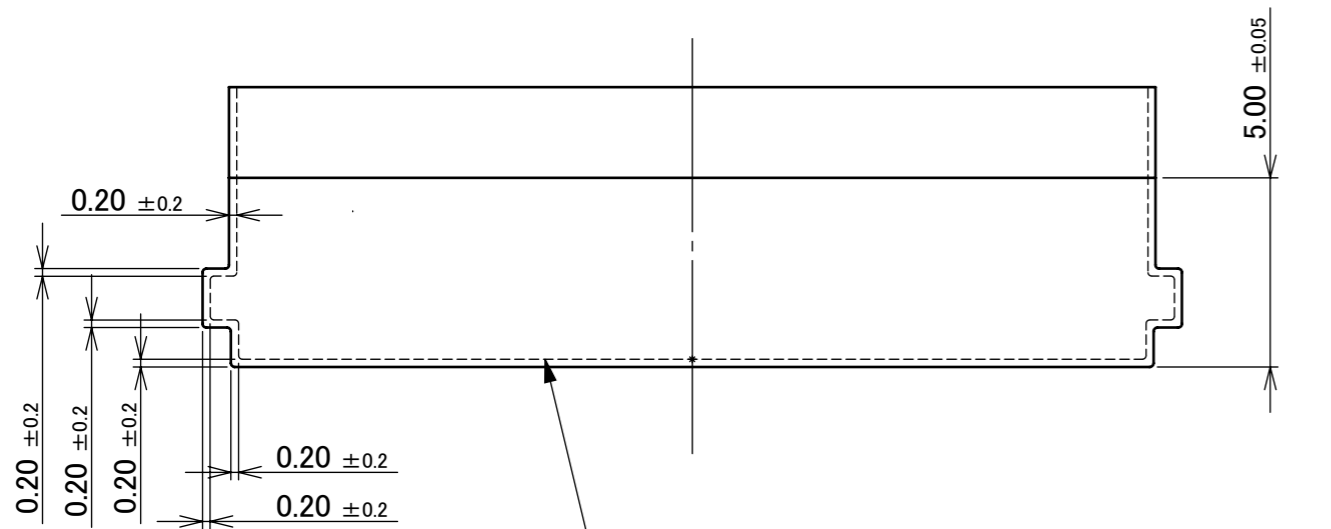
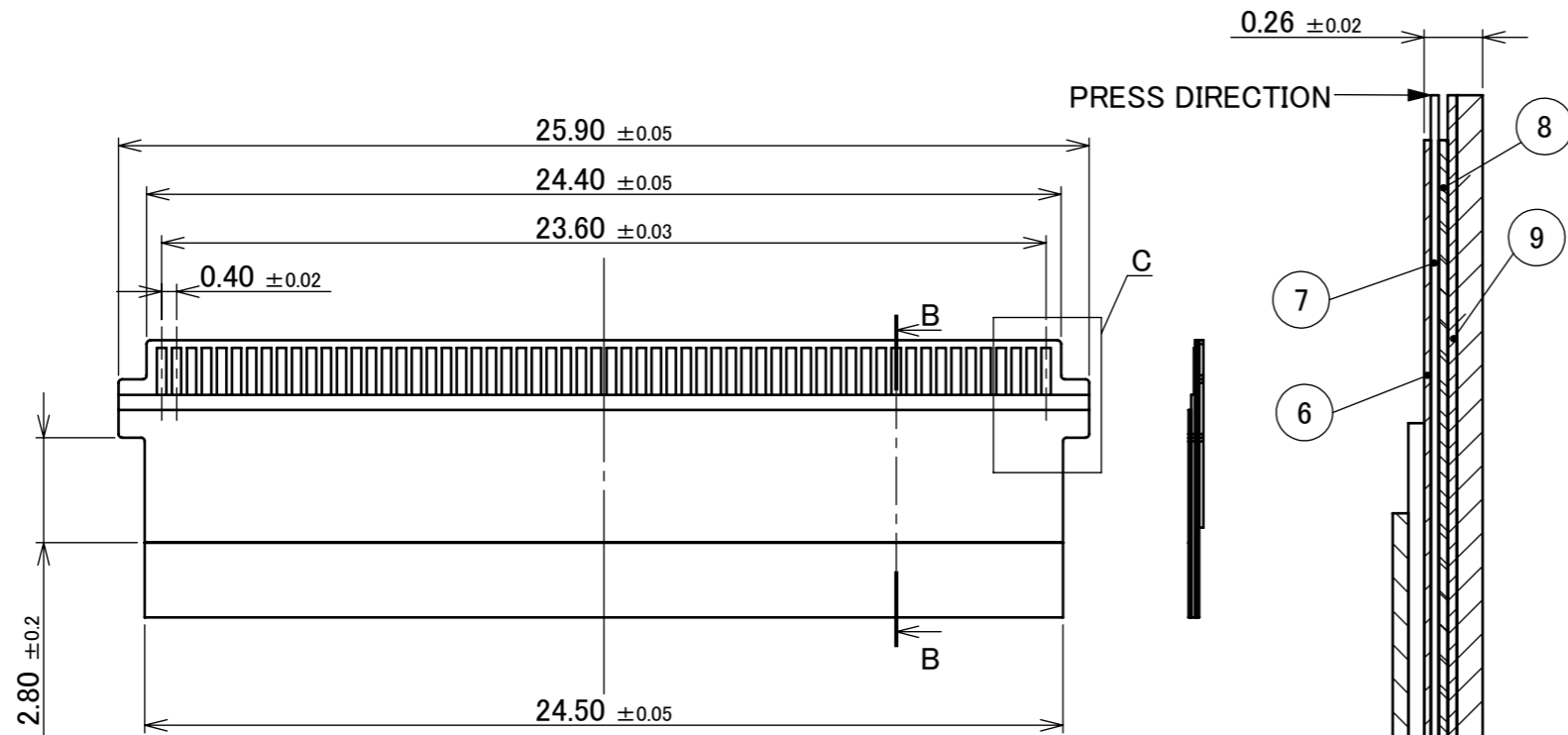
SECT A-A  
(S=10:1)



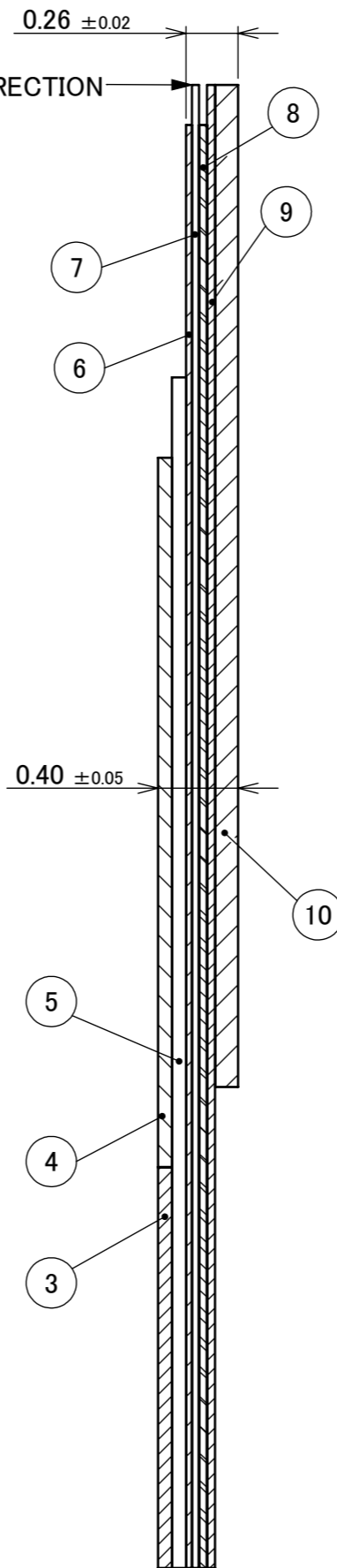
ANGLE	±2°	6 OVER 30 MAX.	±0.3	PROJECTION ⊕	SERIES No. R1	CUSTOMER COPY	
6 MAX.	±0.2	30 OVER 120 MAX.	±0.5				
GENERAL TOLERANCE.				TITLE		SCALE	I-PEX
DWG.	DATE			CABLINE®-CAF SHELL ASS'Y		5:1	
CHK.	DATE					UNIT	
APP.	DATE			DWG. No. 20858		mm	
						SIZE	SHEET 2/5 REV. 2
						A3	

ITEMS	SPECIFICATION
RATING VOLTAGE	100V AC (PER CONTACT)
RATING AMPERAGE (FOR SIGNAL CONTACT)	0.3A AC/DC (PER CONTACT)
OPERATING TEMPERATURE	233~358K(-40°C~+85°C)
OPERATING HUMIDITY	85% MAX.(NON-CONDENSING)
CONTACT RESISTANCE (FOR SIGNAL CONTACT)	INITIAL : 60mohm MAX. / AFTER TEST : $\triangle$ 40mohm MAX.
GROUND SHELL RESISTANCE	INITIAL : 60mohm MAX. / AFTER TEST : $\triangle$ 40mohm MAX.
INSULATION RESISTANCE	INITIAL : 1000Mohm MIN. / AFTER TEST : 500Mohm MIN.
DIELECTRIC WITHSTANDING VOLTAGE	AC250V 1min
DURABILITY	30 CYCLES
MATING FORCE (INITIAL / AFTER TEST)	60P : 16.61N MAX.
UNMATING FORCE (INITIAL / AFTER TEST)	60P : 2.16N MIN.
PRODUCT SPECIFICATION	PRS-2465
TEST REPORT	TR-18016
PACKING STANDARD	PST-17138
INSTRUCTION MANUAL	HIM-18016
ASSEMBLY MANUAL	ASM-18005
APPEARANCE CRITERIA No.	QLS-A***

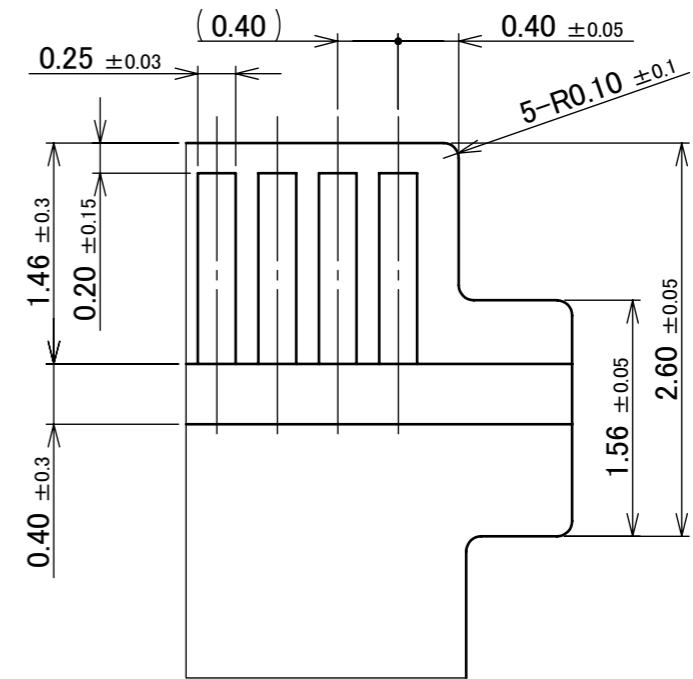
ANGLE	$\pm 2^\circ$	6 OVER 30 MAX.	$\pm 0.3$	PROJECTION 	SERIES No. R1	CUSTOMER COPY
6 MAX.	$\pm 0.2$	30 OVER 120 MAX.	$\pm 0.5$			
GENERAL TOLERANCE.				TITLE CABLIN <sup>®</sup> -CAF SHELL ASS'Y	SCALE UNIT mm	I-PEX
DWG.	DATE					
CHK.	DATE					
APP.	DATE					
				DWG. No.	20858	SIZE A3
				SHEET	3/5	REV. 2



DASHED LINE : NO.8 CONDUCTOR (GROUND) FORM



SECT B-B  
(S= 30 : 1)



DETAIL C  
(S=20:1)

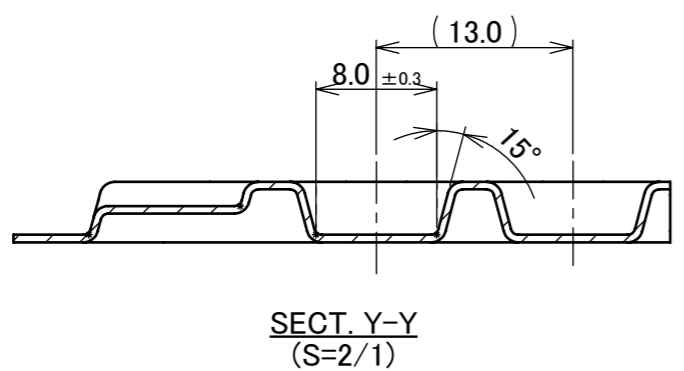
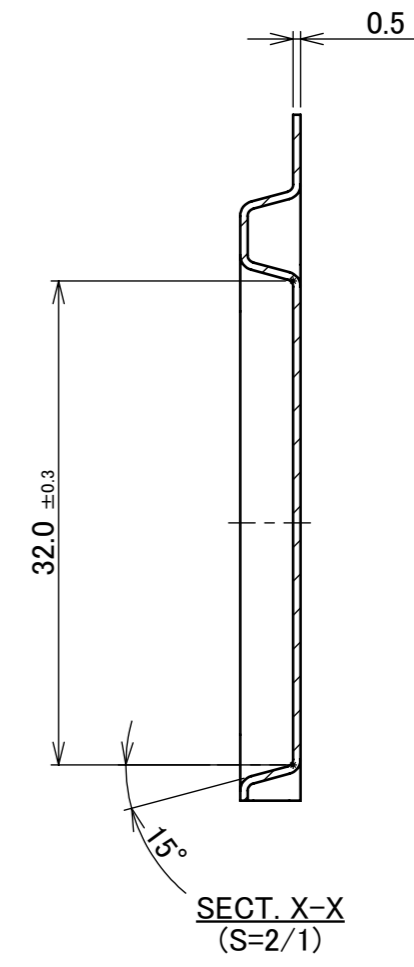
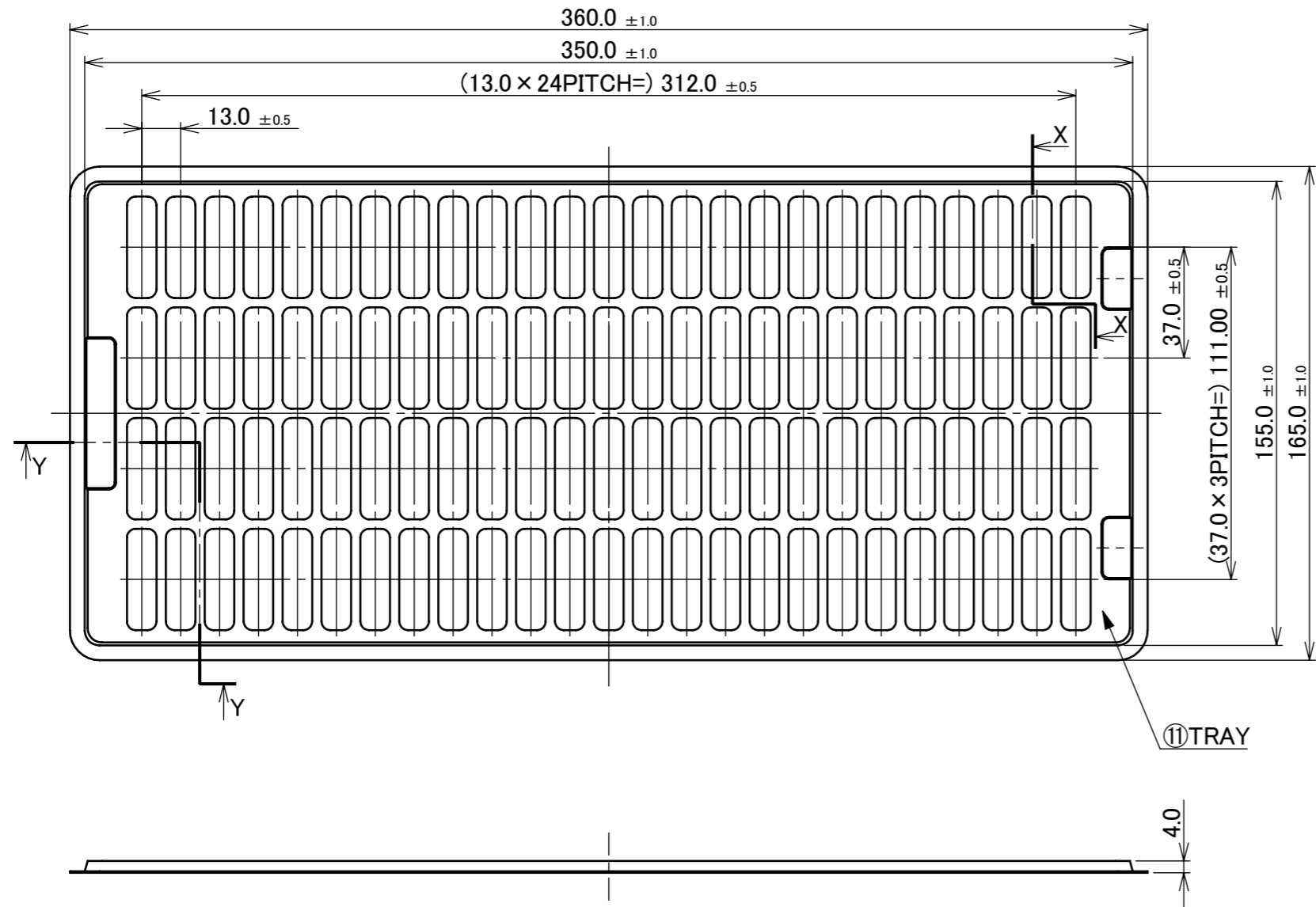
NOTES.

- ADHESIVE SHOULD USE THERMOSETTING.
- NO.3 : SHIELD FILM AND NO.4, NO.8 : CONDUCTOR (GROUND) ARE CARRYING OUT THE ELECTRICAL CONNECTION.
- NO.4 : CONDUCTOR (GROUND) AND NO.8 : CONDUCTOR (GROUND) ARE CARRYING OUT THE ELECTRICAL CONNECTION.
- NO.3 : SHIELD FILM AND NO.6 : CONDUCTOR (SIGNAL) ARE NOT CONTACTING.
- NO.4, NO.8 : CONDUCTOR (GROUND) AND NO.6 : CONDUCTOR (SIGNAL) ARE NOT CONTACTING.

No.	DESCRIPTION	MATERIAL	PLATING
3	SHIELD FILM	-	-
4	CONDUCTOR (GROUND)	Cu	Ni, Au
5	INSULATOR	-	-
6	CONDUCTOR (SIGNAL)	Cu	Ni, Au
7	INSULATOR	-	-
8	CONDUCTOR (GROUND)	Cu	Ni
9	INSULATOR	-	-
10	REINFORCING TAPE	-	-

ANGLE	±2°	6 OVER 30 MAX.	±0.3	PROJECTION ⊕	SERIES No. R1	CUSTOMER COPY	
	6 MAX.	±0.2	30 OVER 120 MAX.				±0.5
GENERAL TOLERANCE.				TITLE CABLIN <sup>®</sup> -CAF SHELL ASS'Y	SCALE 5:1	UNIT mm	
DWG.	DATE						
CHK.	DATE						
APP.	DATE						
				DWG. No.	20858	SIZE A3	
						SHEET 4/5	REV. 2

PART NO.	QTY. IN DITCH (PIECES / DITCH)	QTY. IN TRAY (PIECES / TRAY)	QTY. PER SHIPPING CARTON (TRAYS / S CARTON)	QTY. PER PACKING CARTON (S CARTON / P CARTON)
20858-060T-01	1	100	20 / S CARTON =2000	4 / P CARTON = 8000



11	TRAY	PP	ANTI-STATIC TYPE
NO.	DISCRIPTION	MATERIAL	FINISH , REMARKS
ANGLE	±2°	6 OVER 30 MAX.	±0.3
6 MAX.	±0.2	30 OVER 120 MAX.	±0.5
GENERAL TOLERANCE.		PROJECTION	SERIES No.
DWG.	DATE	⊕	R1
CHK.	DATE	TITLE	
APP.	DATE	CABLIN <sup>®</sup> -CAF SHELL ASS'Y	
		DWG. No.	SCALE
		20858	1:2
			UNIT
			mm
			SIZE
			A3
			SHEET 5/5
			REV. 2

Confidential C

I-PEX Inc.

QKE-DFE06-02 REV.11