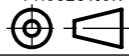




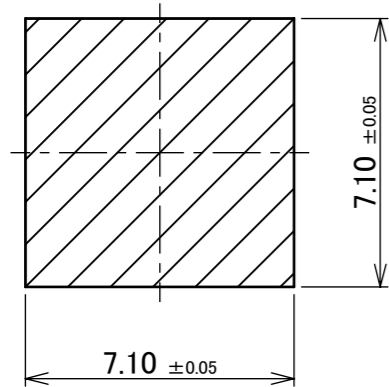
NOTES.
1. APPLICABLE CONNECTOR
AP-LT10 (P/N: 3571-0081-02T)

| NO. | DESCRIPTION | MATERIAL | FINISH , REMARKS |
|-----|-------------|----------|--|
| 1 | TERMINAL | ALUMINUM | 【CONTACT AREA, SMT AREA】 PLATING: Sn 1.0~5.5 μ m OVER Ni 1.0~5.5 μ m. |

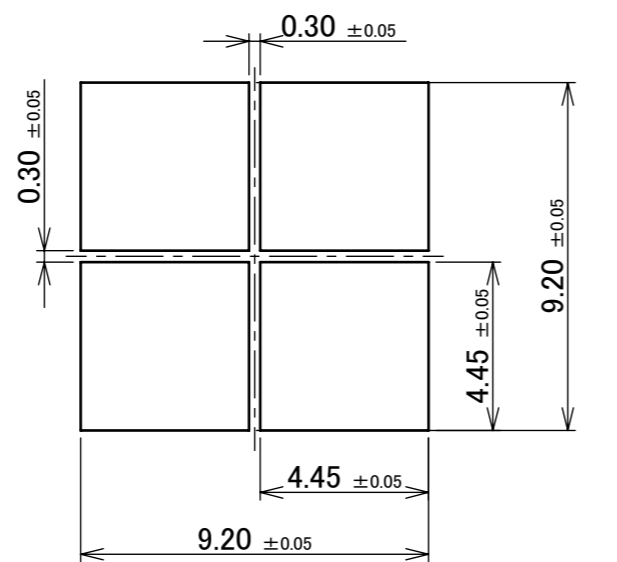
| REV. | ECN | BY | DATE | APP. | APP. | ANGLE | ±2° | 6 OVER 30 MAX. | ±0.3 | PROJECTION | SERIES No. | CUSTOMER COPY |
|------|---------|-----|------------|------|------|--------------------|------|------------------|------|------------|------------|---------------|
| 1 | Z231022 | SEI | 2023/08/31 | Y.H | DWG. | 6 MAX. | ±0.2 | 30 OVER 120 MAX. | ±0.5 | ① | R0 | SCALE |
| 0 | Z230798 | F.J | 2023/07/11 | | CHK. | GENERAL TOLERANCE. | | | | TITLE | 10:1 | I-PEX |
| | | | | | APP. | | | | | AP-TSS10 | UNIT | |
| | | | | | | REVISION RECORD | | | | DWG. No. | mm | SIZE |
| | | | | | | | | | | 3782 | A3 | SHEET |
| | | | | | | | | | | | 1/4 | REV. |
| | | | | | | | | | | | | 1 |

| ITEMS | SPECIFICATION |
|-------------------------|--|
| RATING VOLTAGE | 32A DC |
| OPERATING TEMPERATURE | 233~398K(-40°C~+125°C) |
| OPERATING HUMIDITY | 85% MAX.(NON-CONDENSING) |
| CONTACT RESISTANCE | INITIAL : 1.0mohm MAX. / AFTER TEST : 1.0mohm MAX. |
| SCREW TIGHTENING TORQUE | 0.75~0.93 Nm(REFERENCE) |
| PRODUCT SPECIFICATION | PRS-2845 |
| TEST REPORT | TR-23036 |
| PACKING STANDARD | PST-23063 |
| APPEARANCE CRITERIA No. | QLS-A*** |

| | | | | | | | | |
|--------------------|------|------------------|------|---|--|---|--------------|-----------|
| ANGLE | ±2° | 6 OVER 30 MAX. | ±0.3 | PROJECTION  | SERIES No. R0 | CUSTOMER COPY | | |
| 6 MAX. | ±0.2 | 30 OVER 120 MAX. | ±0.5 | | | | | |
| GENERAL TOLERANCE. | | | | TITLE AP-TSS10 | SCALE  |  | | |
| DWG. | DATE | | | | | | | |
| CHK. | | | | | | | | |
| APP. | | | | | | | | |
| | | | | DWG. No. | 3782 | SIZE A3 | SHEET 2/4 | REV. 1 |

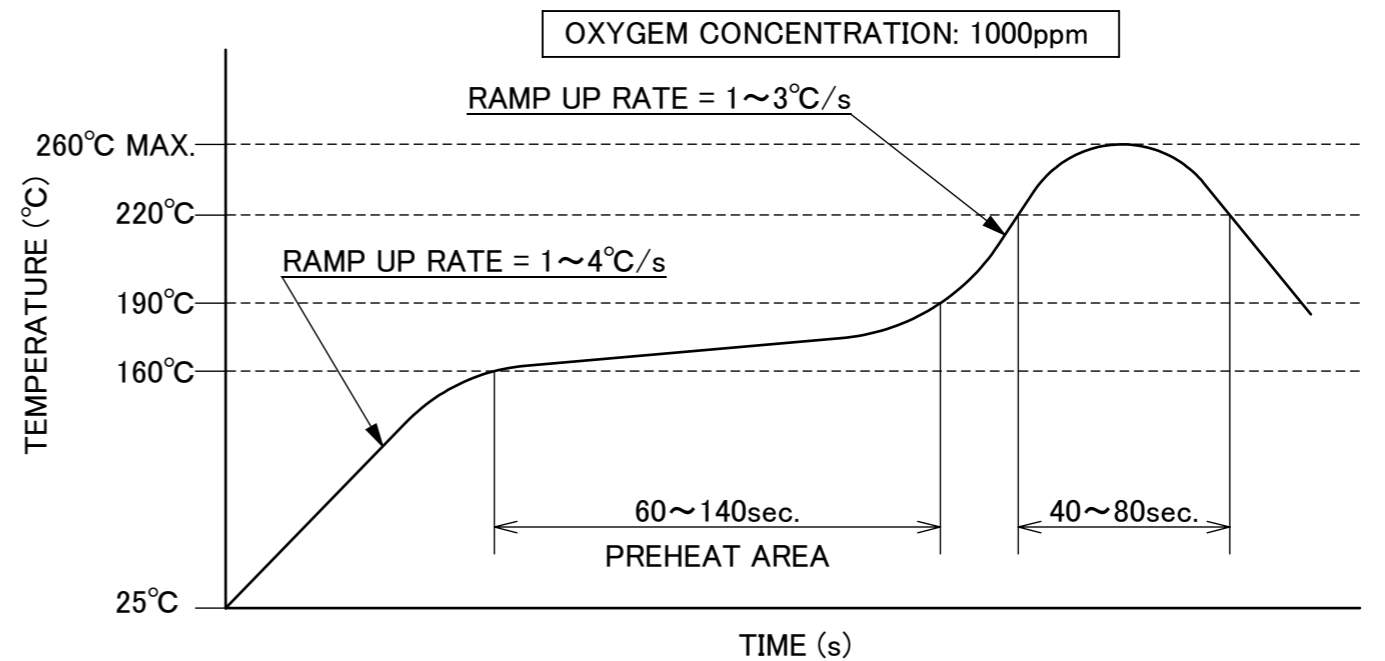


RECOMMENDED PCB LAYOUT



RECOMMENDED METAL MASK LAYOUT

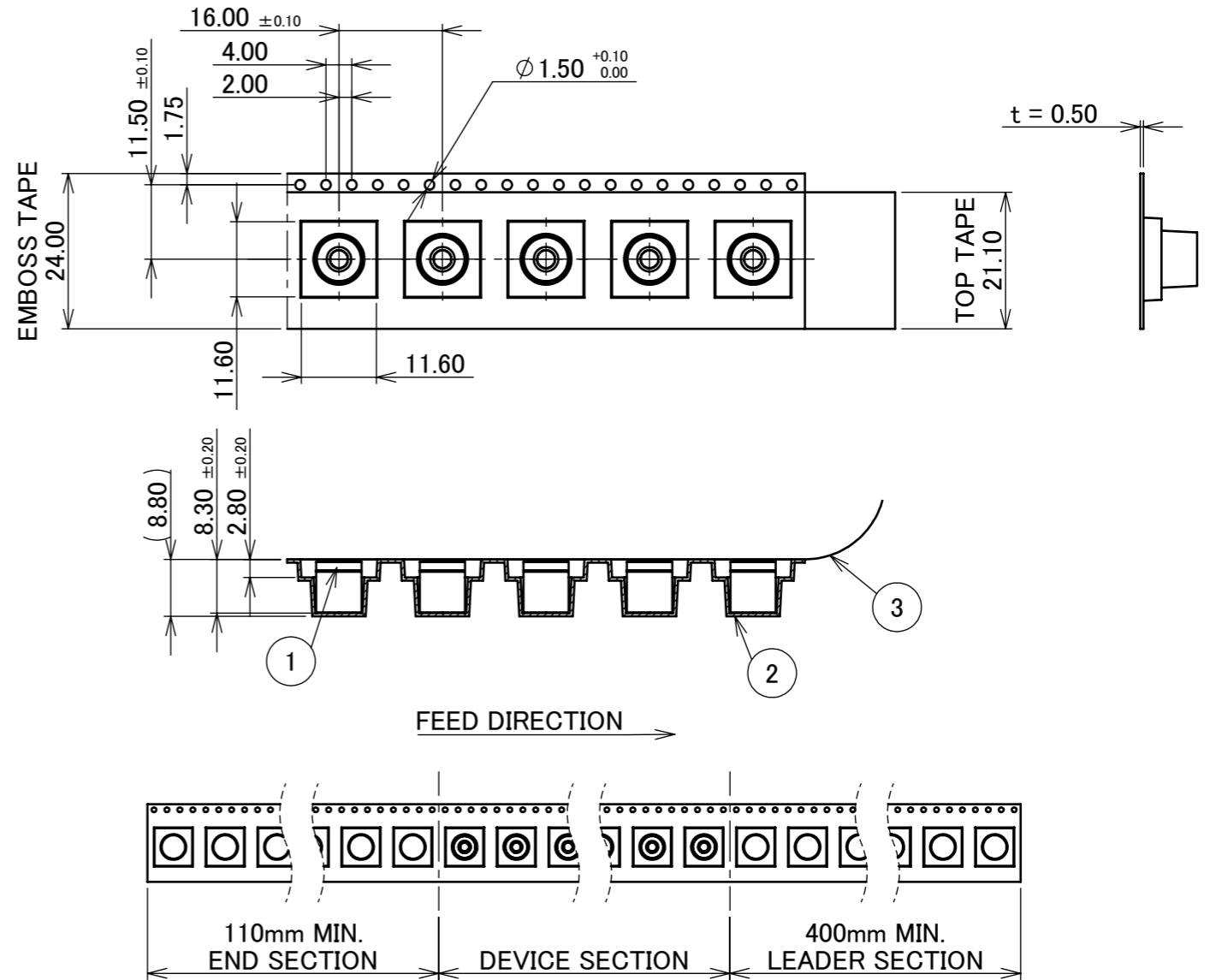
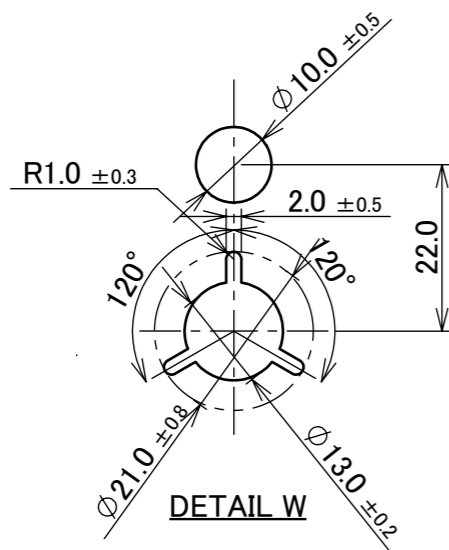
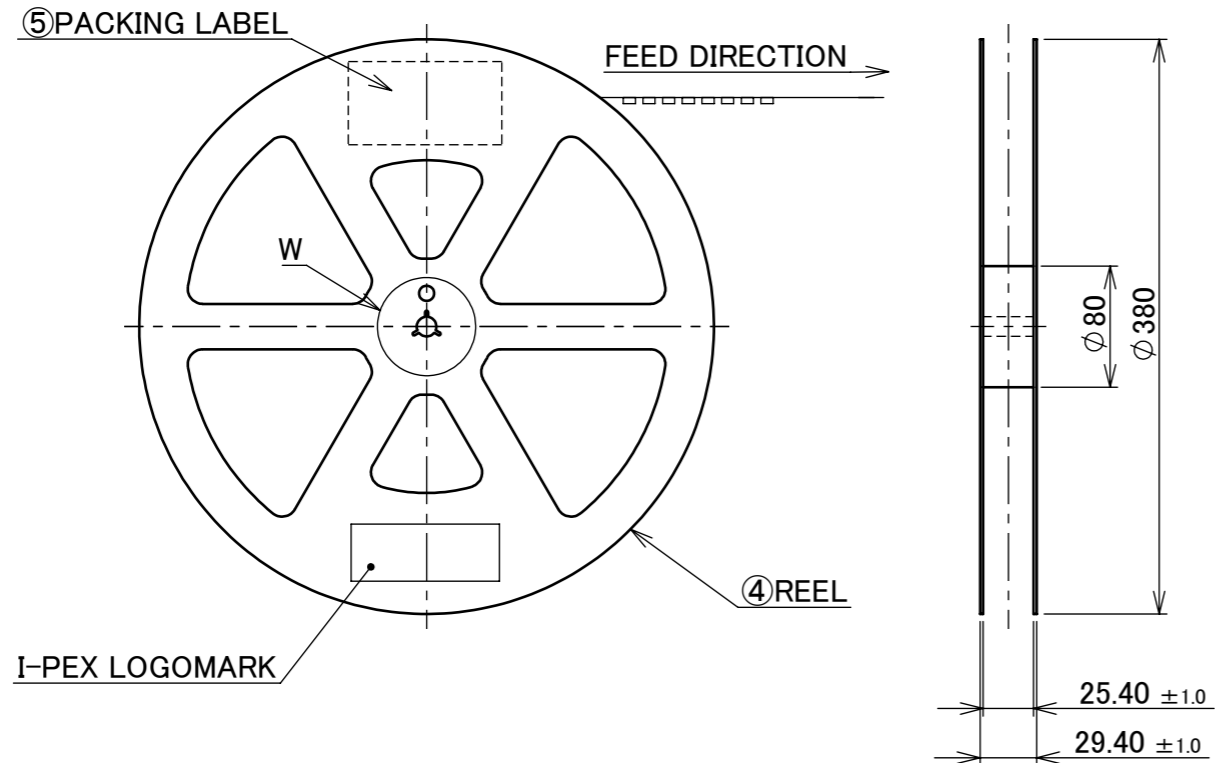
t = 0.15mm



REFLOW TEMPERATURE PROFILE
 ARAKAWA CHEMICAL INDUSTRY CO., LTD. : PSP-V (Sn96.5 Ag3.0 Cu0.5)

| | | | | | | | | |
|--------------------|------|------------------|------|-------------------|------------------|---------------|--------------|-----------|
| ANGLE | ±2° | 6 OVER 30 MAX. | ±0.3 | PROJECTION | SERIES No. R0 | CUSTOMER COPY | | |
| 6 MAX. | ±0.2 | 30 OVER 120 MAX. | ±0.5 | | | | | |
| GENERAL TOLERANCE. | | | | TITLE AP-TSS10 | SCALE 5:1 | | | |
| DWG. | DATE | | | | | | | |
| CHK. | | | | | | | | |
| APP. | | | | | | | | |
| | | | | DWG. No. | 3782 | SIZE A3 | SHEET 3/4 | REV. 1 |

| | | |
|-----------|---|---|
| PART NO. | QTY. PER EMBOSS REEL (PIECES / REEL) | QTY. PER PACKING CARTON (REELS / CARTON) |
| 3782-0001 | 600 / REEL | 5 REELS / CARTON = 3,000 PCS. |



NOTES.

- TAPING SPECIFICATION FOLLOWS JIS C 0806 (IEC 60286-3).
- MAKE EMPTY SECTION OF LEADER AND END ON EACH END OF THE TAPE.
- TOP TAPE SHALL NOT STICK OUT FROM EMBOSS TAPE.
- TOP TAPE SHALL NOT COVER FEED HOLE.

| NO. | DESCRIPTION | MATERIAL | FINISH, REMARKS |
|-----|---------------|----------|------------------|
| 5 | PACKING LABEL | - | - |
| 4 | REEL | PS | BLACK |
| 3 | TOP TAPE | PET | ANTI-STATIC TYPE |
| 2 | EMBOSS TAPE | PS | ANTI-STATIC TYPE |
| 1 | CONNECTOR | ALUMINUM | - |

| | | | | | | | | | | | |
|--------------------|------|------------------|------|-------------------|------------------|---------------|-------|--|--|-------|------|
| ANGLE | ±2° | 6 OVER 30 MAX. | ±0.3 | PROJECTION ⊕ | SERIES No. R0 | CUSTOMER COPY | | | | | |
| 6 MAX. | ±0.2 | 30 OVER 120 MAX. | ±0.5 | | | | | | | | |
| GENERAL TOLERANCE. | | | | TITLE AP-TSS10 | | SCALE X:1 | I-PEX | | | | |
| DWG. | DATE | | | | | UNIT mm | | | | | |
| CHK. | | | | | | SIZE | | | | SHEET | REV. |
| APP. | | | | DWG. No. 3782 | | A3 | | | | 4/4 | 1 |