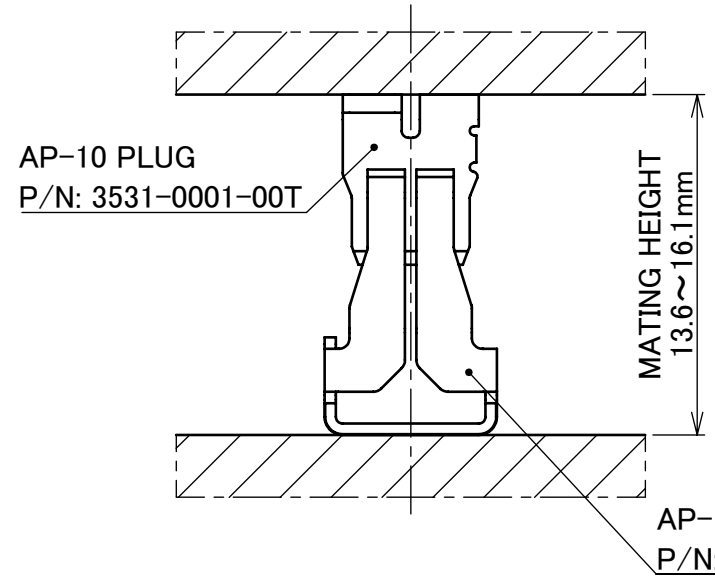
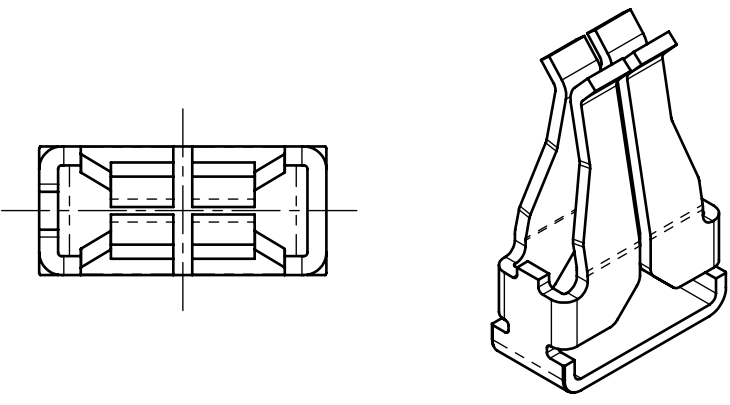


Recommended P/N 3532-0001-00T

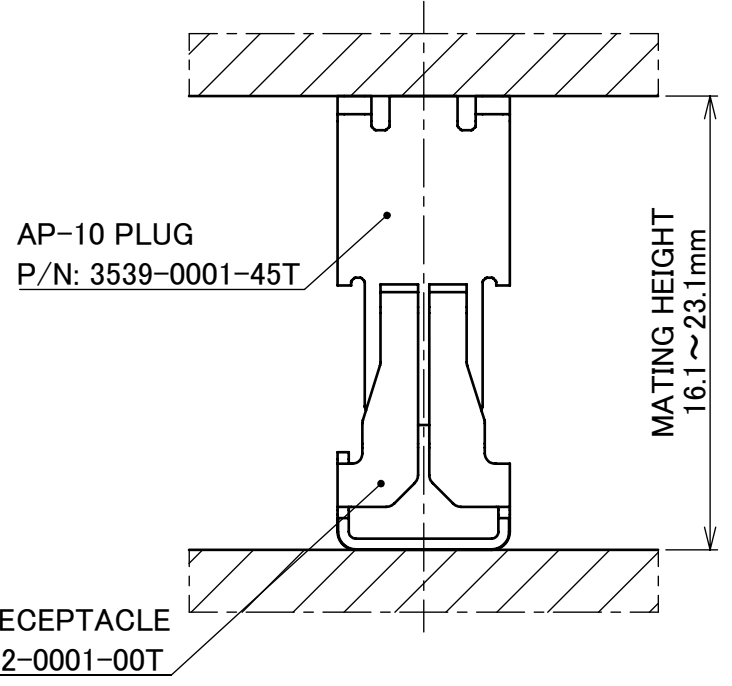
PART NO.  
3532-0001-00T



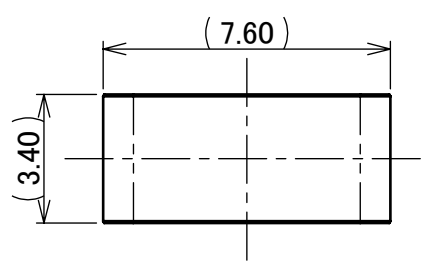
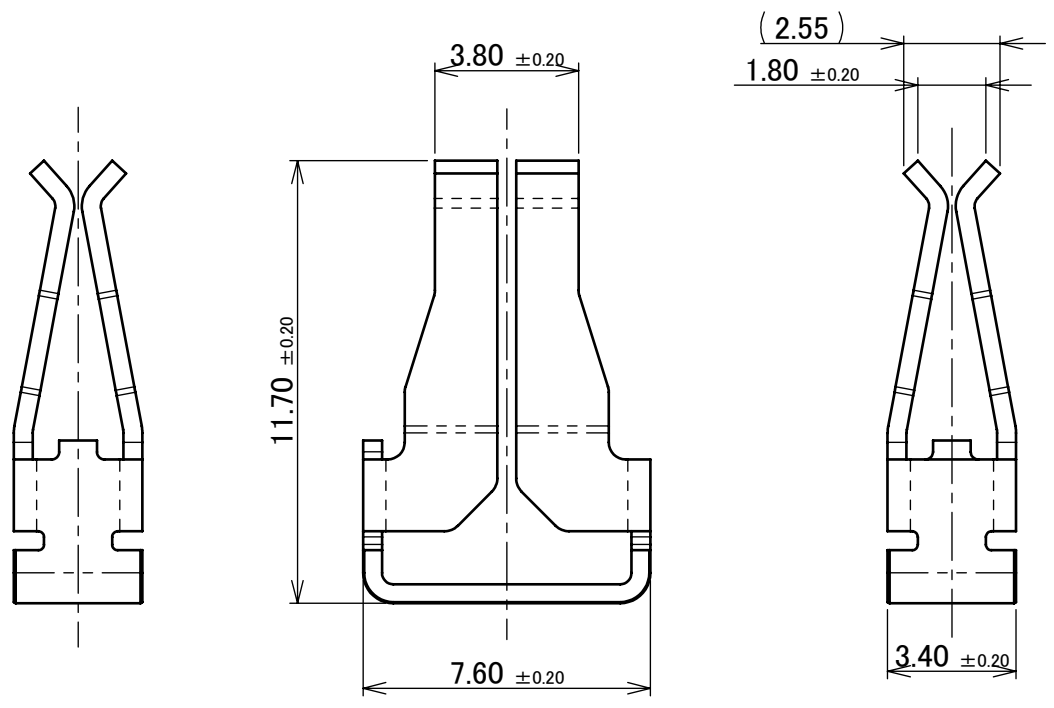
IATF 16949 Cetified [Planned]



MATING CONDITION  
【AP-10 PLUG H=7.5 mm】



MATING CONDITION  
【AP-10 PLUG H=14.5 mm】

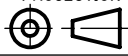


NOTES.  
 1. APPLICABLE CONNECTOR  
 AP-10 PLUG H=7.5 mm (P/N: 3531-0001-00T)  
 AP-10 PLUG H=14.5 mm (P/N: 3539-0001-45T)

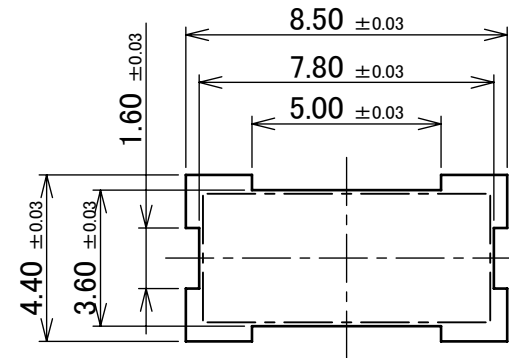
NO.	DESCRIPTION	MATERIAL	FINISH , REMARKS
1	RECEPTACLE	COPPER ALLOY	Sn 1.00~4.50 μm OVER Ni 1.00~4.50 μm

REV.	ECN	BY	DATE	APP.	APP.	DWG. No.	SIZE	SHEET	REV.
5	Z230222	F.J	2023/02/28	Y.H	ANGLE ±2° 6 OVER 30 MAX. ±0.3	PROJECTION  SERIES No. R1 TITLE AP-10 RECEPTACLE SCALE 5:1 UNIT mm I-PEX DWG. No. 3532 SIZE A3 SHEET 1/4 REV. 5	CUSTOMER COPY		
4	Z230029	F.J	2023/01/17	Y.H	6 MAX. ±0.2 30 OVER 120 MAX. ±0.5				
3	Z220290	K.T	2022/03/14	Y.H	GENERAL TOLERANCE.				
2	Z200243	K.T	2020/03/02	T.Y	DWG. T.Yamauchi DATE 2019/08/01				
1	Z200117	T.Y	2020/01/27	Y.S	CHK. -				
0	Z191026	T.Y	2019/08/01	Y.S	APP. Y.Shimada				

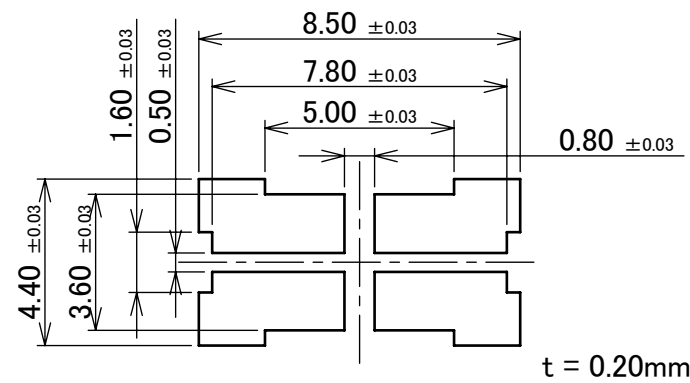
ITEMS	SPECIFICATION
APPLICABLE CONNECTOR PART No.	3531-0001-00T 3539-0001-45T
RATING AMPERAGE	16A DC
TEMPERATURE RISE	△15.0°C Max.
COMPONENT TEMPERATURE(ENERGIZATION)	233~378K(-40°C~+105°C)
OPERATING HUMIDITY	85% MAX.(NON-CONDENSING)
CONTACT RESISTANCE	INITIAL : 1.0 mohm MAX. / AFTER TEST : 1.0 mohm MAX.
DURABILITY	3 CYCLES
MATING FORCE	15.0 N MAX.
COPLANARITY	0.10mm MAX.
PRODUCT SPECIFICATION	PRS-2616
TEST REPORT	TR-19063
PACKING STANDARD	PST-17121
APPEARANCE CRITERIA No.	QLS-A***

ANGLE	±2°	6 OVER 30 MAX.	±0.3	PROJECTION 	SERIES No. R1	CUSTOMER COPY		
6 MAX.	±0.2	30 OVER 120 MAX.	±0.5					
GENERAL TOLERANCE.				TITLE AP-10 RECEPTACLE	SCALE 5:1	<b>I-PEX</b>		
DWG.	DATE							
CHK.								
APP.								
				DWG. No.	3532	SIZE A3	SHEET 2/4	REV. 5

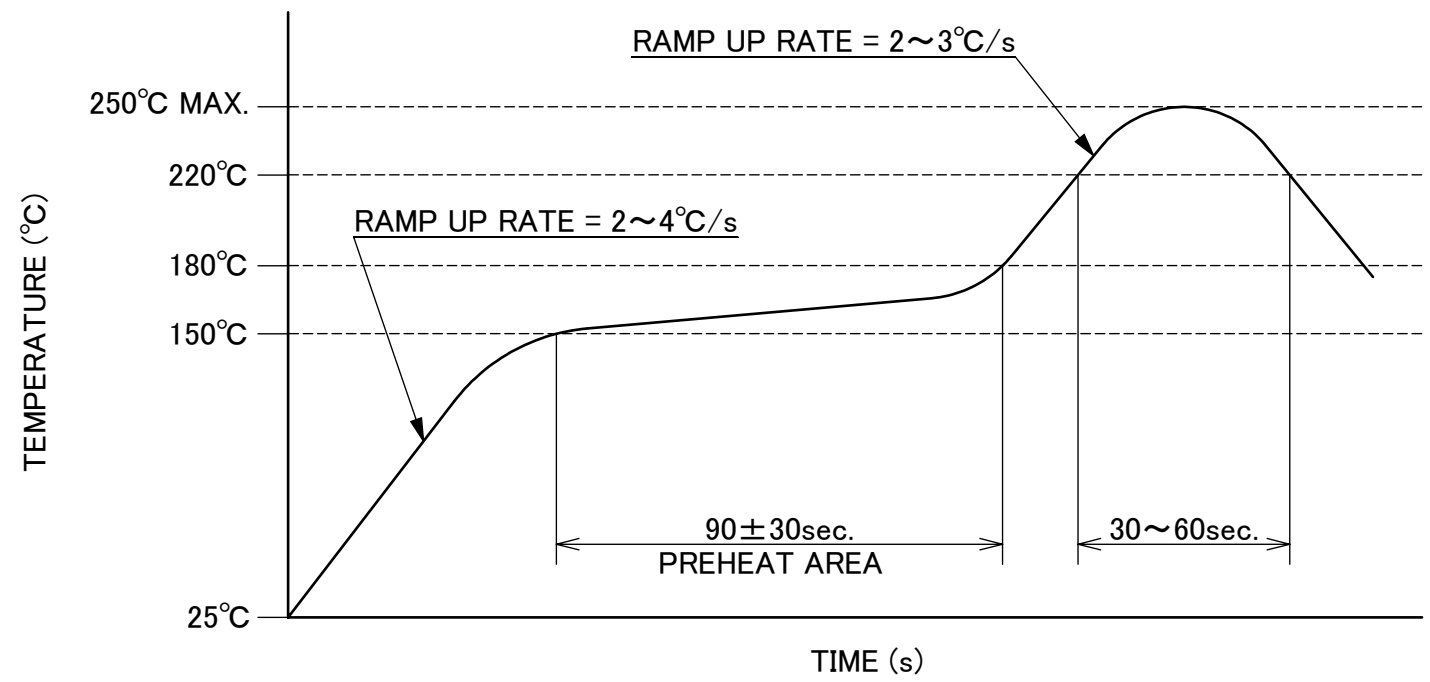
PART NO.  
3532-0001-00T



RECOMMENDED FOOTPRINT PATTERN



RECOMMENDED METAL MASK

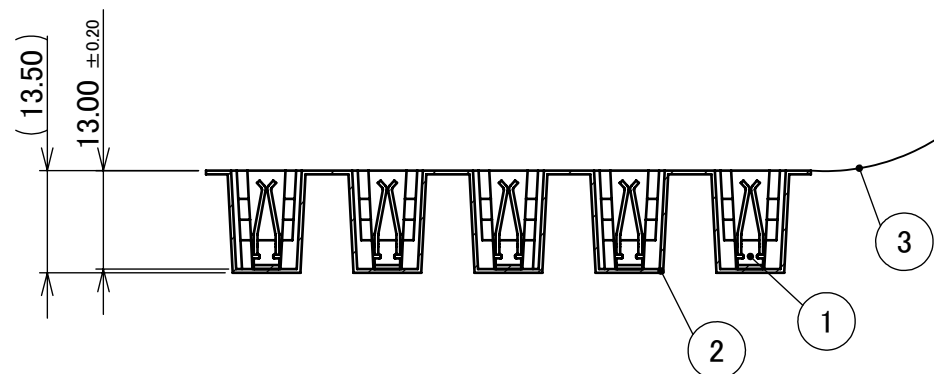
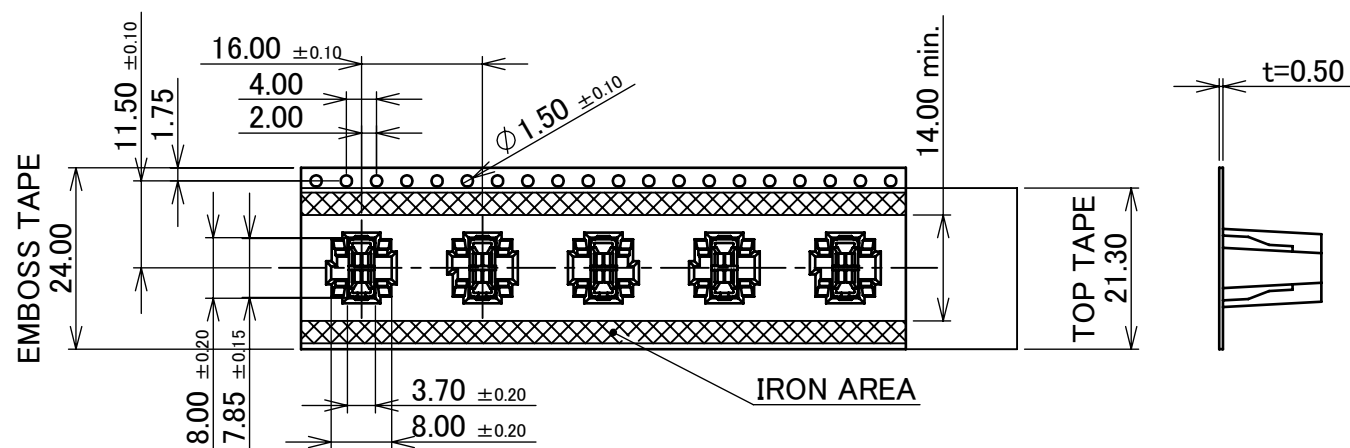
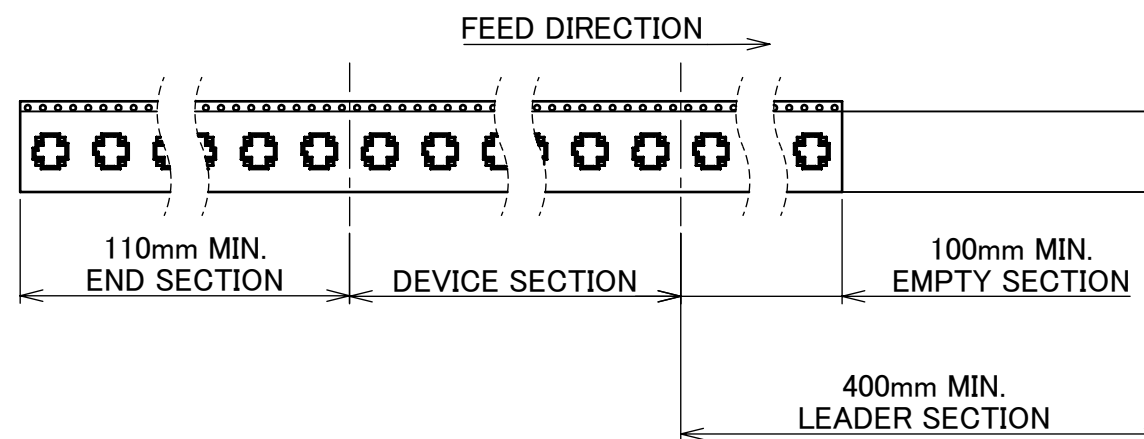
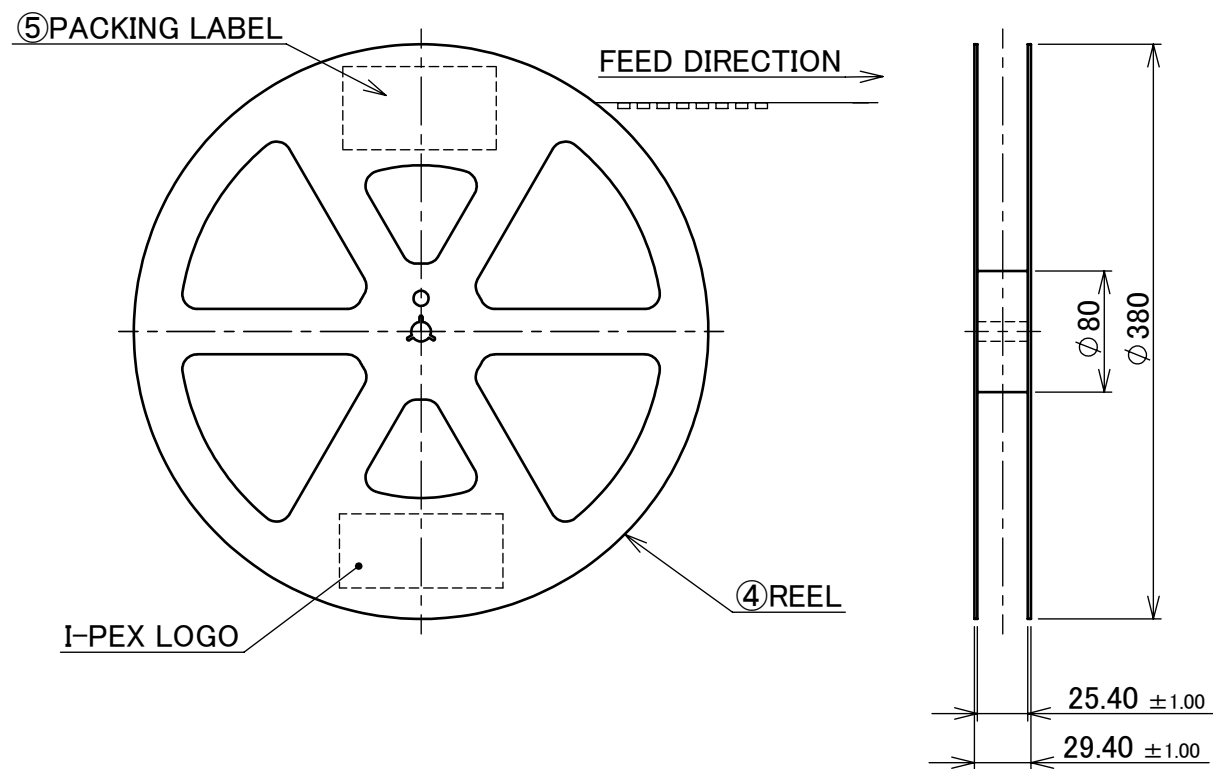


REFLOW TEMPERATURE PROFILE  
SENJU METAL INDUSTRY CO., LTD. : M705-SHF(Sn96.5 Ag3.0 Cu0.5)

ANGLE	±2°	6 OVER 30 MAX.	±0.3	PROJECTION ⊕	SERIES No. R1	CUSTOMER COPY			
6 MAX.	±0.2	30 OVER 120 MAX.	±0.5			SCALE 5:1	I-PEX		
GENERAL TOLERANCE.				TITLE AP-10 RECEPTACLE		UNIT mm			
DWG.	DATE			DWG. No. 3532		SIZE A3	SHEET 3/4	REV. 5	
CHK.									
APP.									

PART NO.	QTY. PER EMBOSS REEL (PIECES / REEL)	QTY. PER PACKING CARTON (REELS / CARTON)
3532-0001-00T	350 PIECES / REEL	5 REELS / CARTON = 1,750 PIECES

IATF 16949 Cetified [Planned]



NOTES.

- TAPING SPECIFICATION FOLLOWS JIS C 0806 (IEC 60286-3).
- MAKE EMPTY SECTION OF LEADER AND END ON EACH END OF THE TAPE.
- TOP TAPE SHALL NOT STICK OUT FROM EMBOSS TAPE.
- TOP TAPE SHALL NOT COVER FEED HOLE.

NO.	DESCRIPTION	MATERIAL	FINISH, REMARKS
5	PACKING LABEL	-	-
4	REEL	PS	BLACK
3	TOP TAPE	PET	ANTI-STATIC TYPE
2	EMBOSS TAPE	PS	ANTI-STATIC TYPE
1	CONNECTOR	COPPER ALLOY	-

ANGLE	±2°	6 OVER 30 MAX.	±0.3	PROJECTION ⊕	SERIES No. R1	CUSTOMER COPY
6 MAX.	±0.2	30 OVER 120 MAX.	±0.5			
GENERAL TOLERANCE.				TITLE AP-10 RECEPTACLE	SCALE X:1	UNIT mm
DWG.	DATE					
CHK.						
APP.						
DWG. No. 3532				SIZE A3	SHEET 4/4	REV. 5