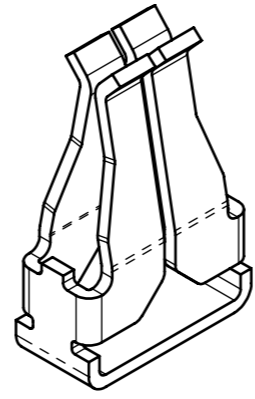
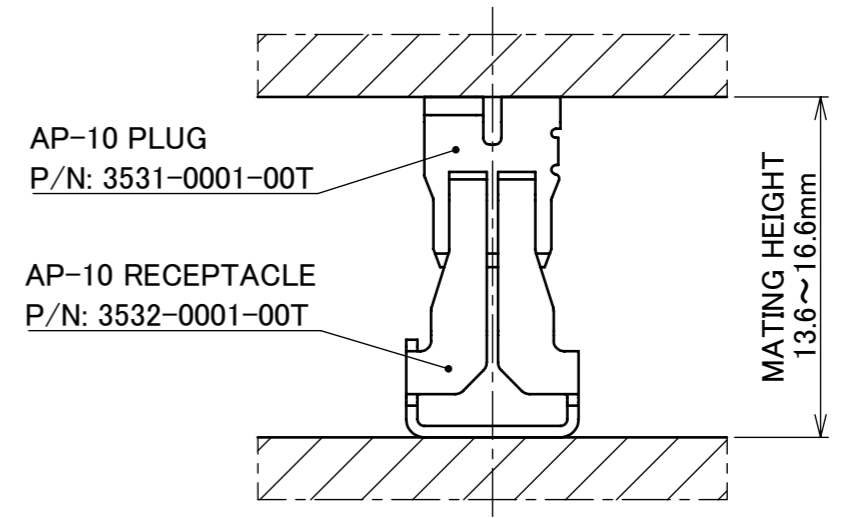
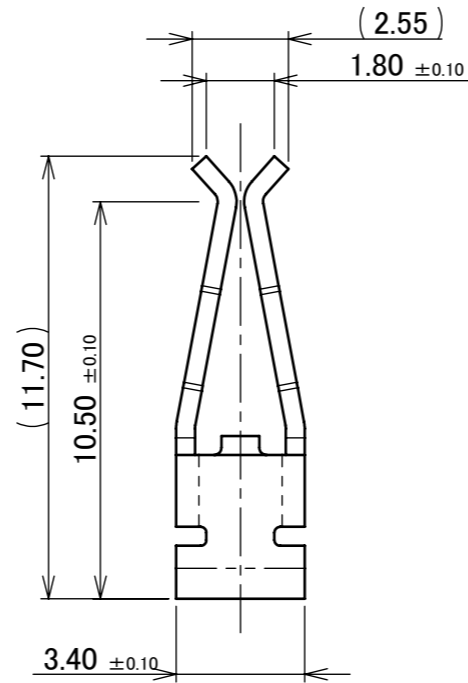
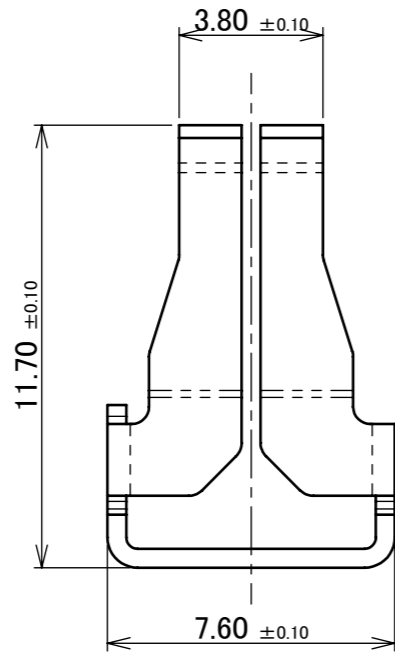
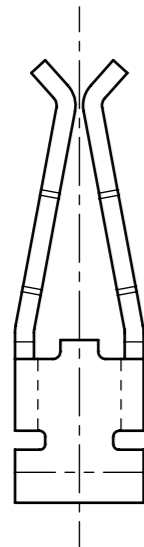
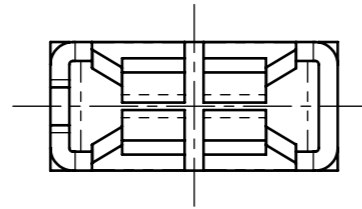


PART NO.
3532-0001-00T

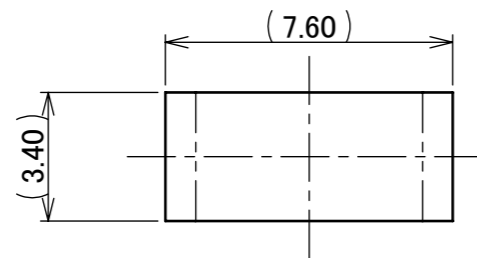


NOTES.

1. APPLICABLE CONNECTOR
AP-10 PLUG (P/N: 3531-0001-00T)
2. APPLICABLE MATING HEIGHT
15.0mm (13.6~16.6mm)
3. COPLANARITY 0.10 MAX.
4. RoHS COMPLIANT
THIS PRODUCT IS COMPLIANT WITH RoHS DIRECTIVE.
5. HALOGEN FREE
THIS PRODUCT IS CONFORMED TO IEC 61249-2-21.
6. RATED CURRENT: 16A AC/DC



MATING CONDITION



1	RECEPTACLE	COPPER ALLOY	Sn 1.00 μ mm MIN. OVER Ni 1.00 μ mm MIN.
NO.	DESCRIPTION	MATERIAL	FINISH , REMARKS

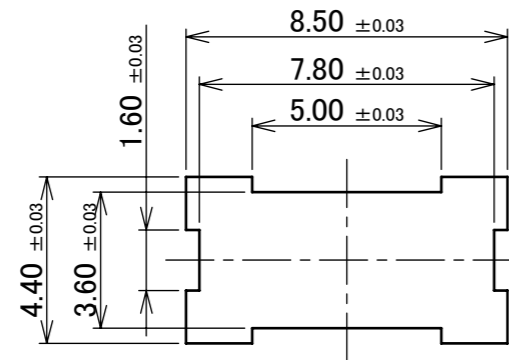
ANGLE	±2°	6 OVER 30 MAX.	±0.3	PROJECTION ⊕	SERIES No. R0	CUSTOMER COPY			
	6 MAX.	±0.2	30 OVER 120 MAX.				±0.5		
GENERAL TOLERANCE.				TITLE AP-10 RECEPTACLE	SCALE 5:1	UNIT mm			
2	Z200243	K.T	2020/03/02				T.Y	SIZE A3	SHEET 1/4 REV. 1
1	Z200117	T.Y	2020/01/27				Y.S		
0	Z191026	T.Y	2019/08/01						
REV.	ECN	BY	DATE	APP.	APP.	DATE	DWG. No.	3532	
REVISION RECORD					Y.Shimada	2019/08/01			



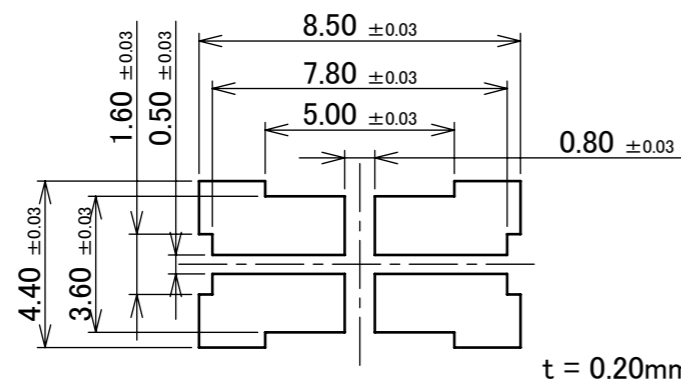
ITEMS	SPECIFICATION
APPLICABLE CONNECTOR PART No.	3531-0001-00T
APPLICABLE MATING HEIGHT	15.0mm (13.6~16.6mm)
RATING AMPERAGE (FOR SIGNAL CONTACT)	16A AC/DC
TEMPERATURE RISE	△15.0°C Max.
OPERATING TEMPERATURE	233~398K(-40°C~+125°C) (CONTAINING TEMPERATURE RISE BY CURRENT)
OPERATING HUMIDITY	85% MAX.(NON-CONDENSING)
CONTACT RESISTANCE	INITIAL : 1.0 mohm MAX. AFTER TEST : 1.5 mohm MAX.
DURABILITY	10 CYCLES
MATING FORCE	15.0 N MAX.
COPLANARITY	0.10mm MAX.
PRODUCT SPECIFICATION	PRS-2616
TEST REPORT	TR-19063
PACKING STANDARD	PST-17121
INSTRUCTION MANUAL	HIM-19017
APPEARANCE CRITERIA No.	QLS-A***

ANGLE	±2°	6 OVER 30 MAX.	±0.3	PROJECTION ①	SERIES No. R0	CUSTOMER COPY
6 MAX.	±0.2	30 OVER 120 MAX.	±0.5			
GENERAL TOLERANCE.				TITLE AP-10 RECEPTACLE	SCALE 5:1	UNIT mm
DWG.	DATE					
CHK.	DATE					
APP.	DATE					
				DWG. No.	3532	SIZE A3
				SHEET 2/4		REV. 1

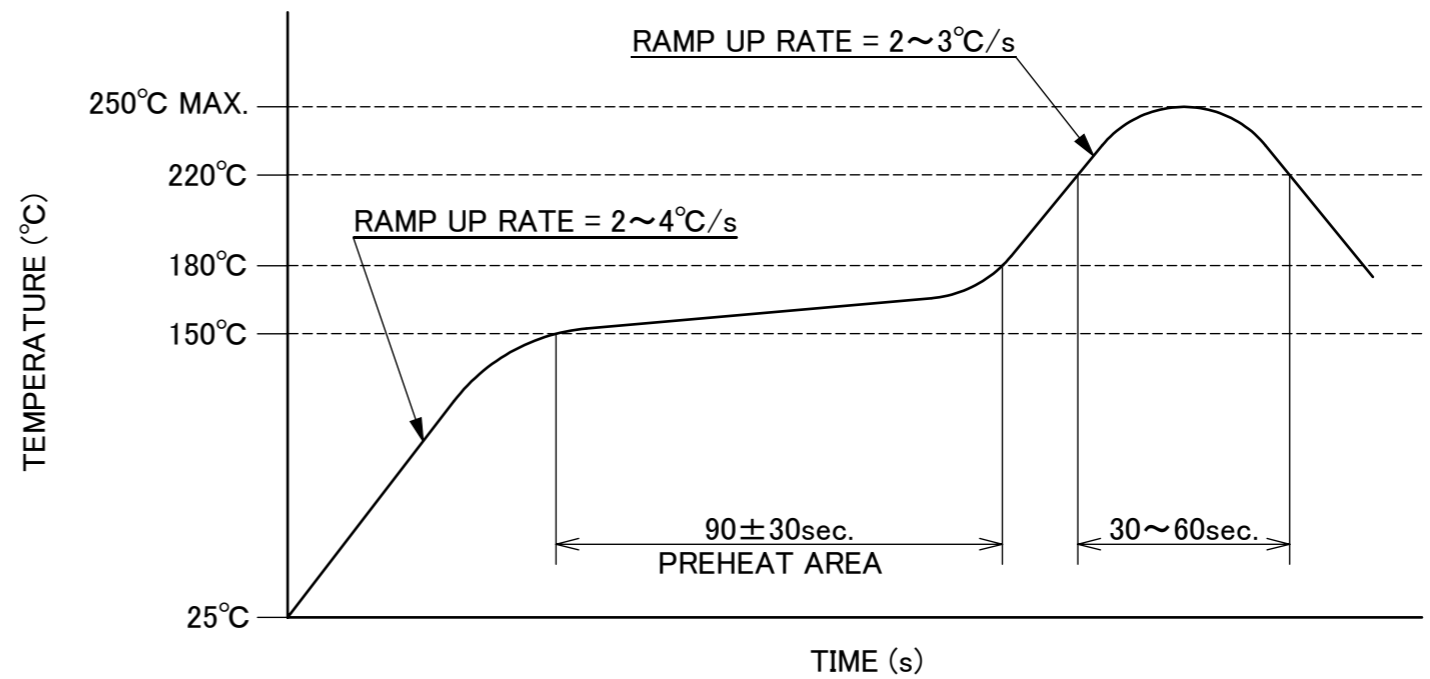




RECOMMENDED FOOTPRINT PATTERN



RECOMMENDED METAL MASK

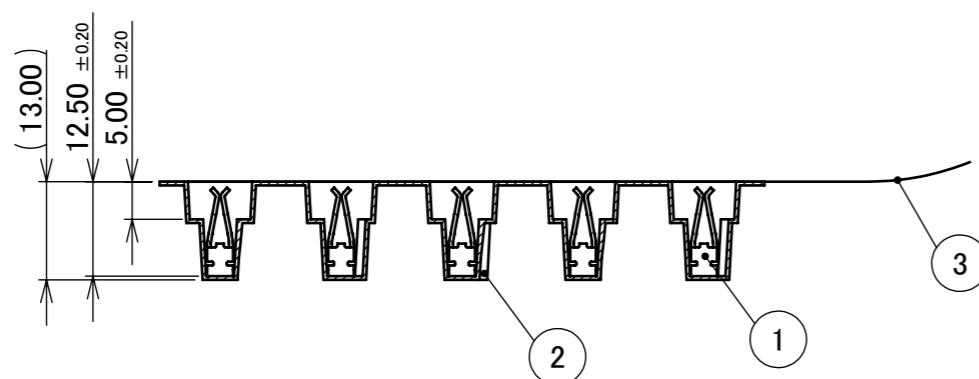
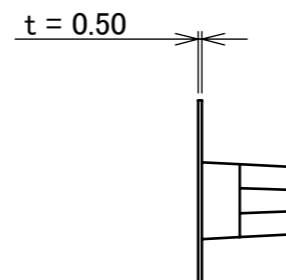
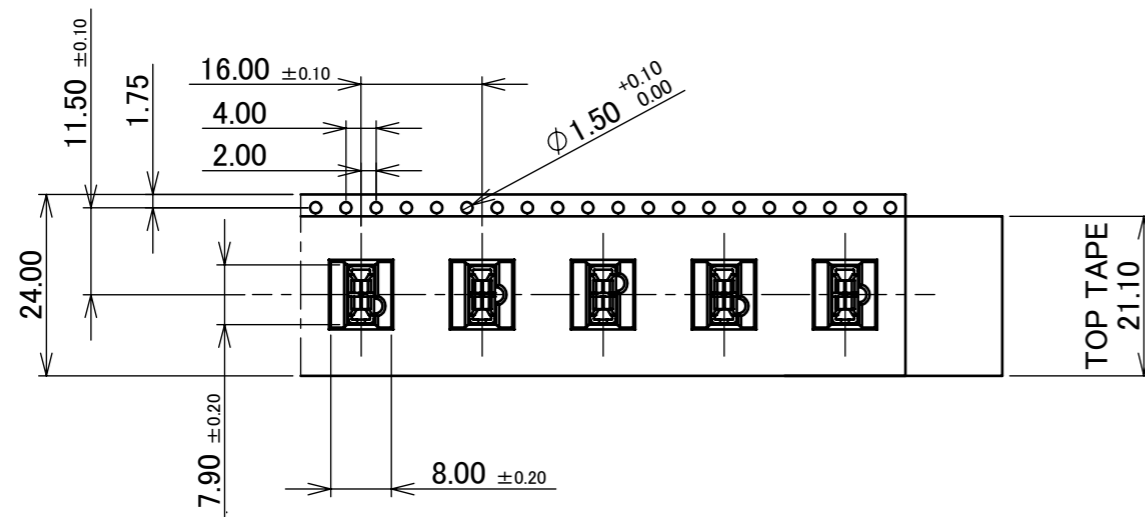
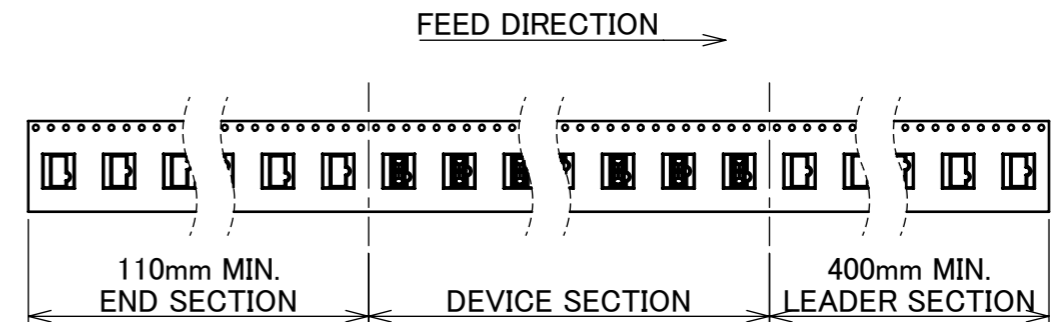
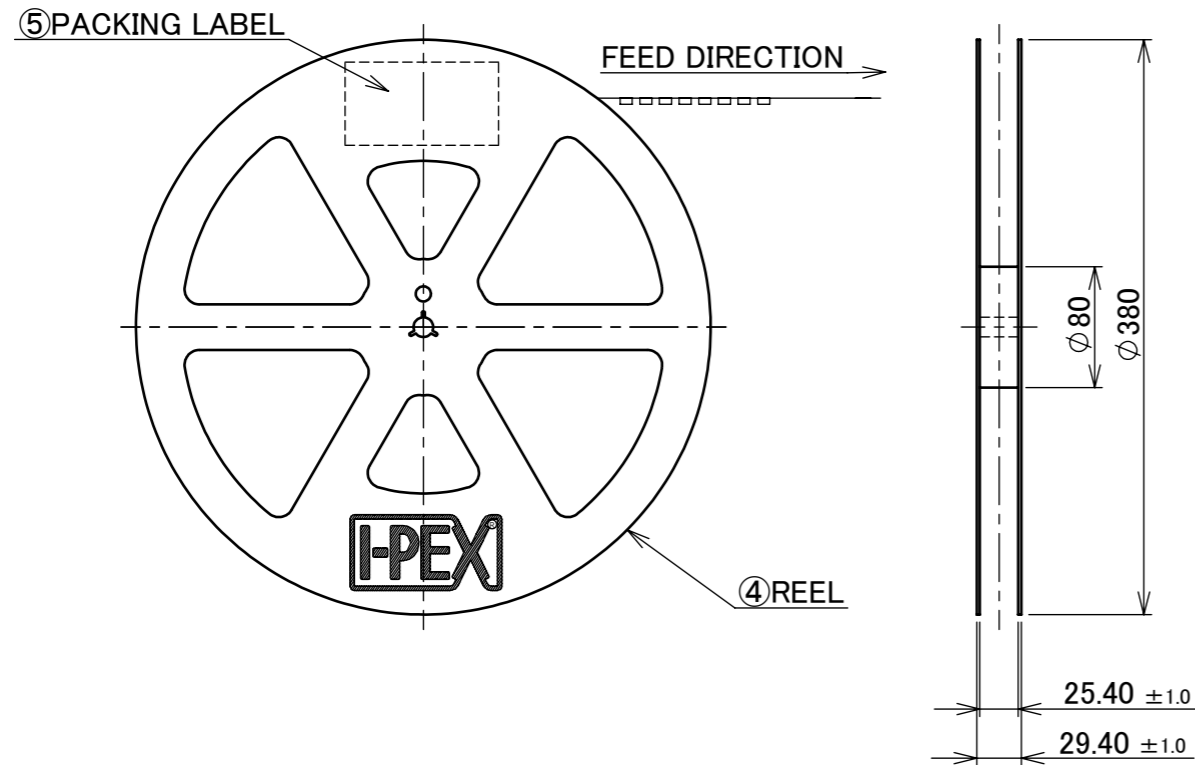


REFLOW TEMPERATURE PROFILE
 SENJU METAL INDUSTRY CO., LTD. : M705-SHF(Sn96.5 Ag3.0 Cu0.5)

ANGLE	±2°	6 OVER 30 MAX.	±0.3	PROJECTION 	SERIES No. R0	CUSTOMER COPY
6 MAX.	±0.2	30 OVER 120 MAX.	±0.5			
GENERAL TOLERANCE.				TITLE AP-10 RECEPTACLE	SCALE 5:1	UNIT mm
DWG.	DATE					
CHK.	DATE					
APP.	DATE					
				DWG. No.	3532	SIZE A3
				SHEET 3/4		REV. 1



PART NO.	QTY. PER EMBOSS REEL (PIECES / REEL)	QTY. PER PACKING CARTON (REELS / CARTON)
3532-0001-00T	350 PIECES / REEL	5 REELS / CARTON = 1,750 PIECES



NOTES.
7. TAPING SPECIFICATION FOLLOWS JIS C 0806 (IEC 60286-3).
8. MAKE EMPTY SECTION OF LEADER AND END ON EACH END OF THE TAPE.
9. TOP TAPE SHALL NOT STICK OUT FROM EMBOSS TAPE.
10. TOP TAPE SHALL NOT COVER FEED HOLE.

NO.	DESCRIPTION	MATERIAL	FINISH, REMARKS
5	PACKING LABEL	-	-
4	REEL	PS	BLACK
3	TOP TAPE	PET	ANTI-STATIC TYPE
2	EMBOSS TAPE	PS	ANTI-STATIC TYPE
1	CONNECTOR	COPPER ALLOY	Sn PLATING 1.00 μm MIN.

ANGLE	±2°	6 OVER 30 MAX.	±0.3	PROJECTION ⊕	SERIES No. R0	CUSTOMER COPY
6 MAX.	±0.2	30 OVER 120 MAX.	±0.5			
GENERAL TOLERANCE.				TITLE AP-10 RECEPTACLE	SCALE 5:1	UNIT mm
DWG.	DATE					
CHK.	DATE					
APP.	DATE					
				DWG. No.	3532	SIZE A3
						SHEET 4/4 REV. 1

