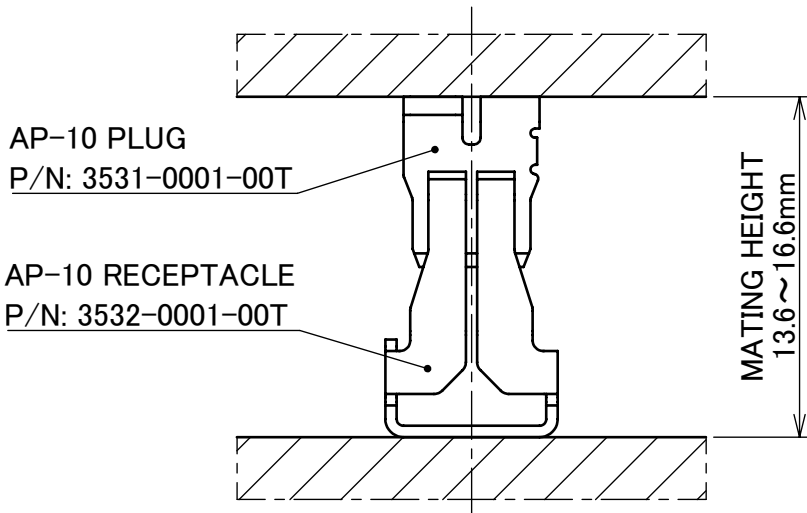
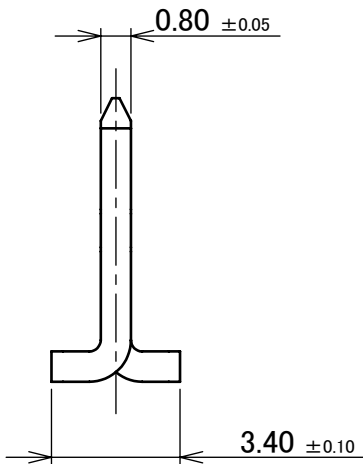
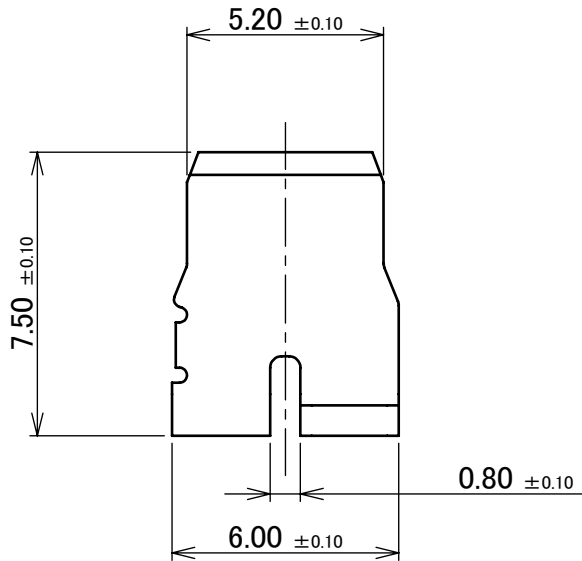
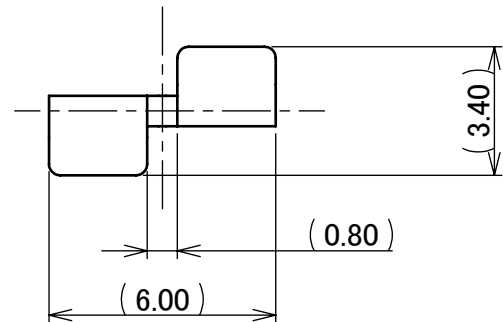
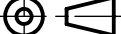



- NOTES.
- 1. APPLICABLE CONNECTOR  
AP-10 RECEPTACLE (P/N: 3532-0001-00T)
  - 2. APPLICABLE MATING HEIGHT  
15.0mm (13.6~16.6mm)
  - 3. COPLANARITY 0.10 MAX.
  - 4. RoHS COMPLIANT  
THIS PRODUCT IS COMPLIANT WITH RoHS DIRECTIVE.
  - 5. HALOGEN FREE  
THIS PRODUCT IS CONFORMED TO IEC 61249-2-21.
  - 6. RATED CURRENT: 16A AC/DC

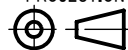



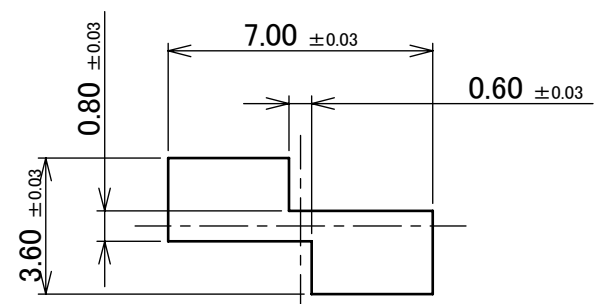
MATING CONDITION



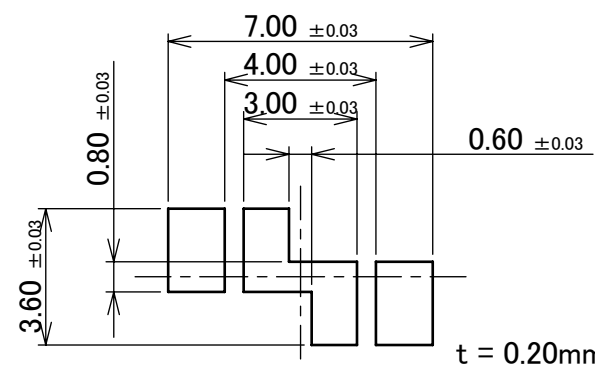
1	PLUG	BRASS	Sn 1.00 μ mm MIN. OVER Ni 1.00 μ mm MIN.							
NO.	DESCRIPTION	MATERIAL	FINISH , REMARKS							
			ANGLE	±2°	6 OVER 30 MAX.	±0.3	PROJECTION 	SERIES No. R0	CUSTOMER COPY	
			6 MAX.	±0.2	30 OVER 120 MAX.	±0.5				
			GENERAL TOLERANCE.				TITLE AP-10 PLUG	SCALE		
2	Z200243	K.T	2020/03/02	T.Y	DWG.	DATE		UNIT		
1	Z200117	T.Y	2020/01/27	Y.S	T.Yamauchi	2019/08/01				
0	Z191026	T.Y	2019/08/01		CHK.	DATE		mm		
REV.	ECN	BY	DATE	APP.	APP.	DATE	DWG. No.	SIZE	SHEET 1/4	REV. 1
REVISION RECORD					Y.Shimada	2019/08/01	3531	A3		

ITEMS	SPECIFICATION
APPLICABLE CONNECTOR PART No.	3532-0001-00T
APPLICABLE MATING HEIGHT	15.0mm (13.6~16.6mm)
RATING AMPERAGE (FOR SIGNAL CONTACT)	16A AC/DC
TEMPERATURE RISE	Δ15.0°C Max.
OPERATING TEMPERATURE	233~398K(-40°C~+125°C) (CONTAINING TEMPERATURE RISE BY CURRENT)
OPERATING HUMIDITY	85% MAX.(NON-CONDENSING)
CONTACT RESISTANCE	INITIAL : 1.0 mohm MAX. AFTER TEST : 1.5 mohm MAX.
DURABILITY	10 CYCLES
MATING FORCE	15.0 N MAX.
COPLANARITY	0.10mm MAX.
PRODUCT SPECIFICATION	PRS-2616
TEST REPORT	TR-19063
PACKING STANDARD	PST-17020
INSTRUCTION MANUAL	HIM-19017
APPEARANCE CRITERIA No.	QLS-A***

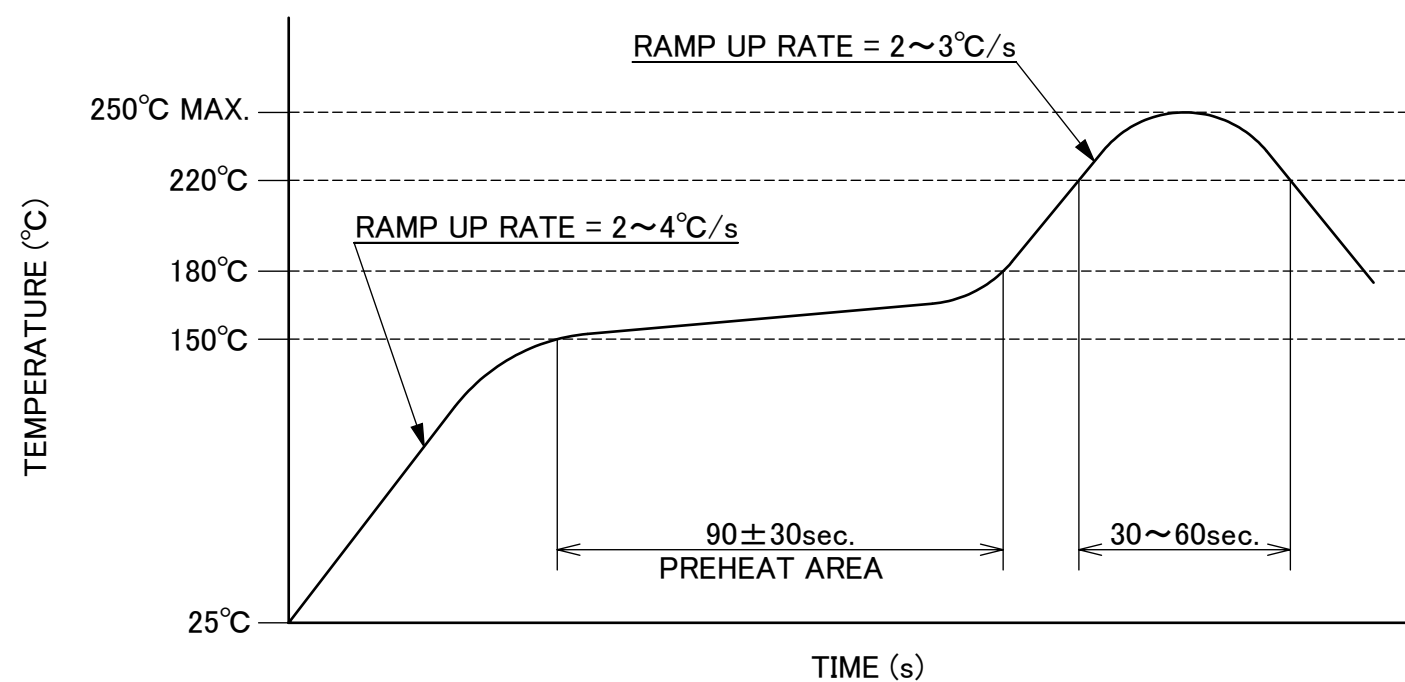
ANGLE	±2°	6 OVER 30 MAX.	±0.3	PROJECTION 	SERIES No. R0	CUSTOMER COPY							
6 MAX.	±0.2	30 OVER 120 MAX.	±0.5										
GENERAL TOLERANCE.				TITLE AP-10 PLUG			SCALE						
DWG.	DATE						5:1						
CHK.	DATE						UNIT						
APP.	DATE						mm						
				DWG. No. 3531			SIZE	SHEET 2/4    REV. 1					
							A3						



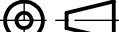

RECOMMENDED FOOTPRINT PATTERN



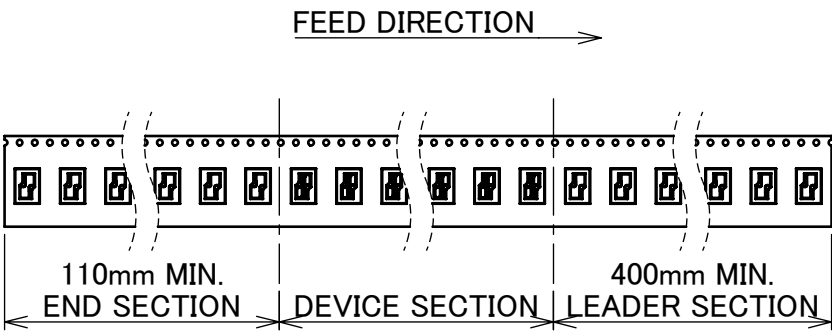
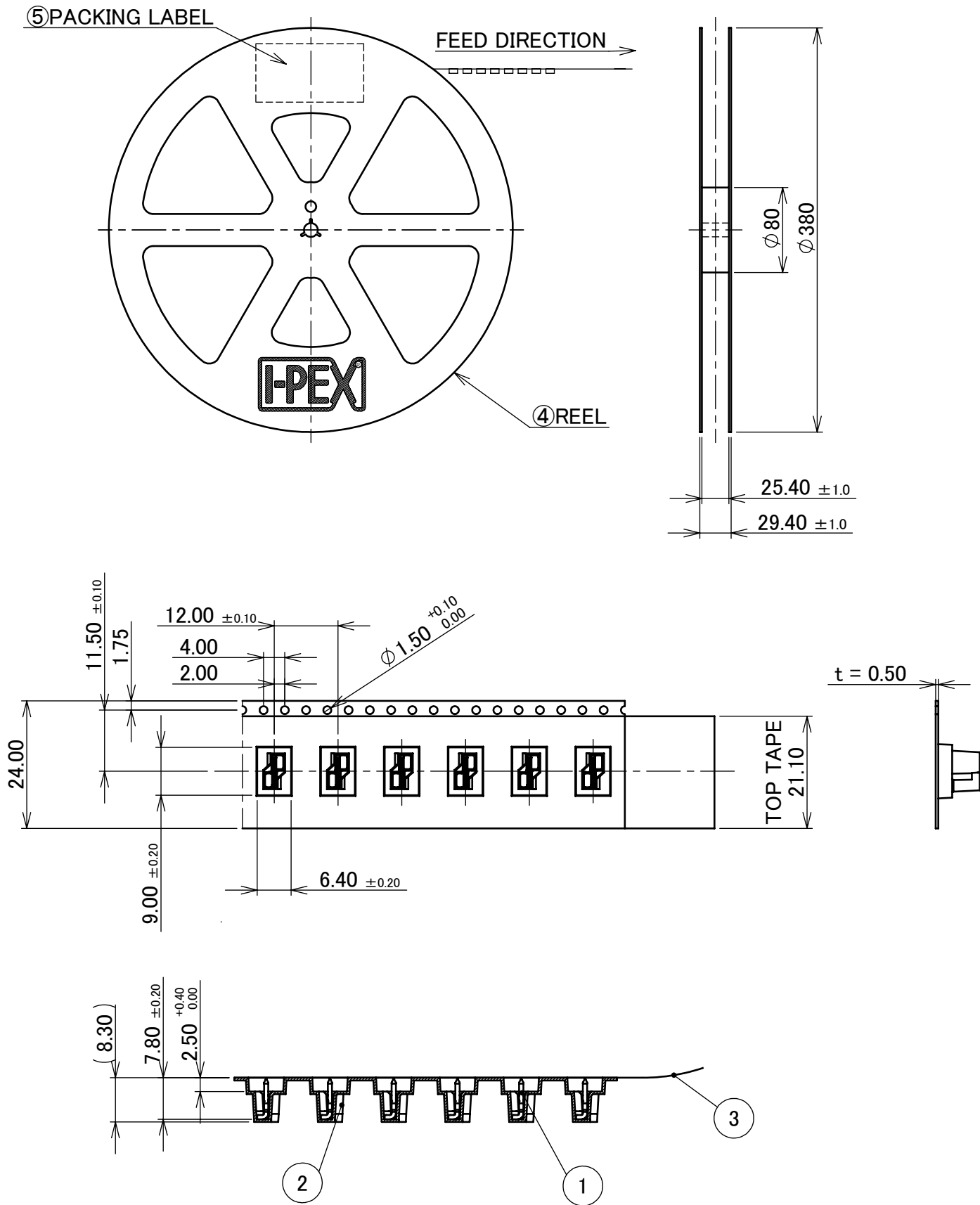
RECOMMENDED METAL MASK



REFLOW TEMPERATURE PROFILE  
SENJU METAL INDUSTRY CO., LTD. : M705-SHF(Sn96.5 Ag3.0 Cu0.5)

ANGLE	±2°	6 OVER 30 MAX.	±0.3		SERIES No. R0	CUSTOMER COPY			
6 MAX.	±0.2	30 OVER 120 MAX.	±0.5						
GENERAL TOLERANCE.				TITLE AP-10 PLUG		SCALE			
DWG.	DATE					5:1			
CHK.	DATE					UNIT			
						mm			
APP.	DATE			DWG. No.	SIZE	SHEET 3/4 REV. 1			
				3531	A3				

PART NO.	QTY. PER EMBOSS REEL (PIECES / REEL)	QTY. PER PACKING CARTON (REELS / CARTON)
3531-0001-00T	700 PIECES / REEL	5 REELS / CARTON = 3,500 PIECES



- NOTES.
7. TAPING SPECIFICATION FOLLOWS JIS C 0806 (IEC 60286-3).
  8. MAKE EMPTY SECTION OF LEADER AND END ON EACH END OF THE TAPE.
  9. TOP TAPE SHALL NOT STICK OUT FROM EMBOSS TAPE.
  10. TOP TAPE SHALL NOT COVER FEED HOLE.

5	PACKING LABEL	-	-
4	REEL	PS	BLACK
3	TOP TAPE	PET	ANTI-STATIC TYPE
2	EMBOSS TAPE	PS	ANTI-STATIC TYPE
1	CONNECTOR	COPPER ALLOY	Sn PLATING 1.00 $\mu$ m MIN.
NO.	DESCRIPTION	MATERIAL	FINISH , REMARKS

ANGLE	$\pm 2^\circ$	6 OVER 30 MAX.	$\pm 0.3$	PROJECTION 	SERIES No. R0	CUSTOMER COPY
6 MAX.	$\pm 0.2$	30 OVER 120 MAX.	$\pm 0.5$			
GENERAL TOLERANCE.				TITLE AP-10 PLUG	SCALE 5:1	UNIT mm
DWG.	DATE					
CHK.	DATE					
APP.	DATE					
DWG. No.				3531	SIZE A3	SHEET 4/4
						REV. 1