

CABLINE®-CAL PLUG HOUSING ASS'Y

Part No. 20777-0**T-01

Packing Standard

1	S19139	February 28, 2019	S.Yamaguchi	T.Masunaga	Y.Shimada
0	S17299	April 20, 2017	M.Ishimaru	-	H.Ikari
Rev.	ECN	Date	Prepared by	Checked by	Approved by

1. 製品名称 (NAME) & 製品番号 (ITEM) :

CABLIN-CAL PLUG HOUSING ASSY : 20777-0**T-01

2. 梱包材料 (PACKING MATERIAL)




芯数 (Pos.)	トレイ (TRAY)				内装カートン (SHIPPING CARTON)	外装カートン (PACKING CARTON)
	外寸法 (MEASURE)	ポケット寸法 (POCKET WIDTH) 図 2 参照 (REFER FIG.2)	ポケット深さ (DEPTH)	ポケット数 (POCKET QTY.)		
30P	360×165	29.0×8.0	3.5	100 (TOTAL)	385×175×90 OUTER	406×406×214 OUTER
40P						


芯数 (Pos.)	ポリ袋 (PLASTIC BAG) P/N 950113	乾燥剤 (DESICCANT)
	サイズ (SIZE)	量 (1 袋あたり) QUANTITY (1 BAG)
30P	700×600	3g×1
40P		

3. 梱包数量 (PACKING QTY.)

芯数 (Pos.)	入数 / 溝 (QTY. IN DITCH)	入数 / トレイ (QTY. IN TRAY)	入数 (トレイの数) / 内装カートン QTY. IN SHIPPING CARTON (TRAY QTY.)	入数 (内装カートンの数) / 外装カートン QTY. IN PACKING CARTON (S CARTON QTY.)
30P	1	100	2000 (20 枚 (TRAYS))	8000 (4 箱 (BOXES))
40P				

4. 現品票 (LABEL)

20090909011300-00001		
P/N	①	CHECK
Q'TY	②	⑦
LOT	③	
	NAME: ④	REMARK
	MADE IN <input type="text"/> ⑤  	
DAI-ICHI SEIKO CO.,LTD.		

托盘

 PS

HF

①... Part number : Ex. 20777-040T-01

②... QTY.

③... Products lot No. :

It is constituted from ten figures. (See below.)

 NN NN NN NNNN
 A B C D

A : Last two figures of the Christian era (two figures)

B : Month (two figures)

C : Day (two figures)

D : It is cord number that I-PEX uses. (four figures)

Example : 190228J010

It means that the Product was manufactured on Feb./28/2019

④... Item : Ex. CABLINE-CAL PLUG HOUSING ASS'Y

⑤... Production country

⑥... QR code

⑦... Check stamp

トレイに入れる製品の向き(Direction of products putting in tray.)

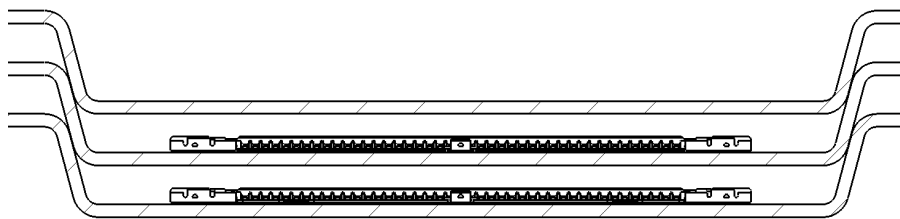
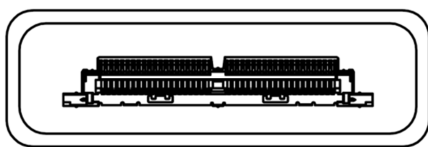


図 1 (Fig.1)

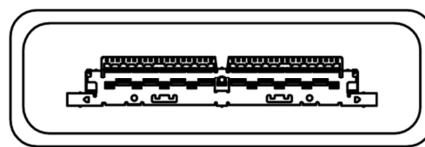
[注記] トレイは同じ向きで重ね、蓋として空トレイを用いる。

([NOTE] Piling the tray to the same direction and putting a lid on the tray with empty tray.)

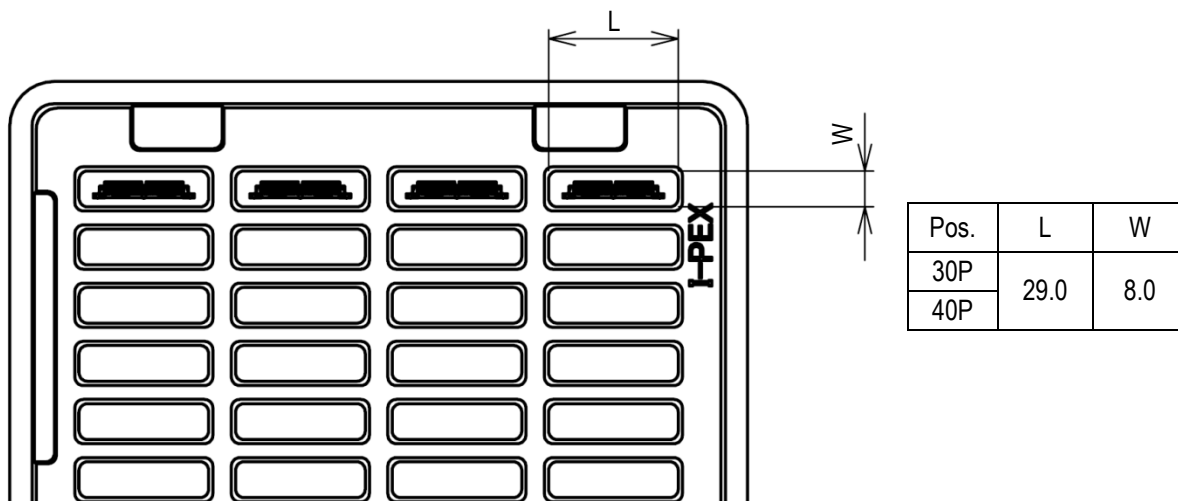
※ 金属シェルを下面にして梱包する事。
(Move metal shell downward, and pack it.)



OK



NG



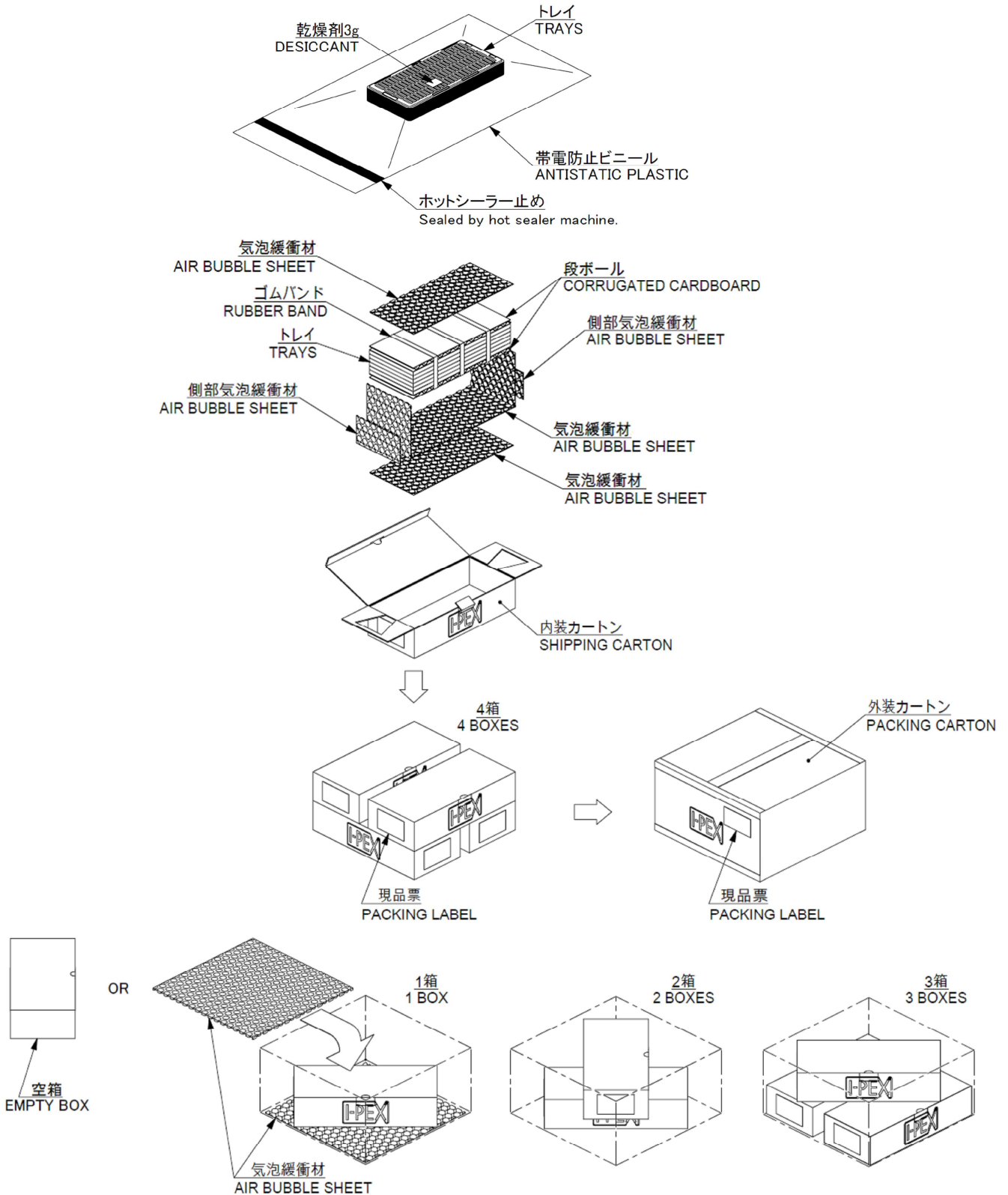


図 3 (Fig.3)

※小箱より製品を取り出す際に、輪ゴム部分を引き上げますとトレイが緩み製品脱落の恐れがあります。

取り扱いの際はご注意ください。

If operator pulls up the rubber band when they take out parts, there is possibility that tray bundle loosen and the parts drop out. Please note the taking up method.

