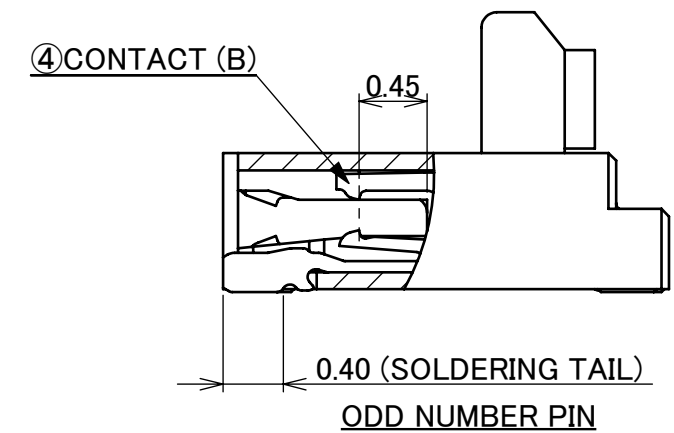
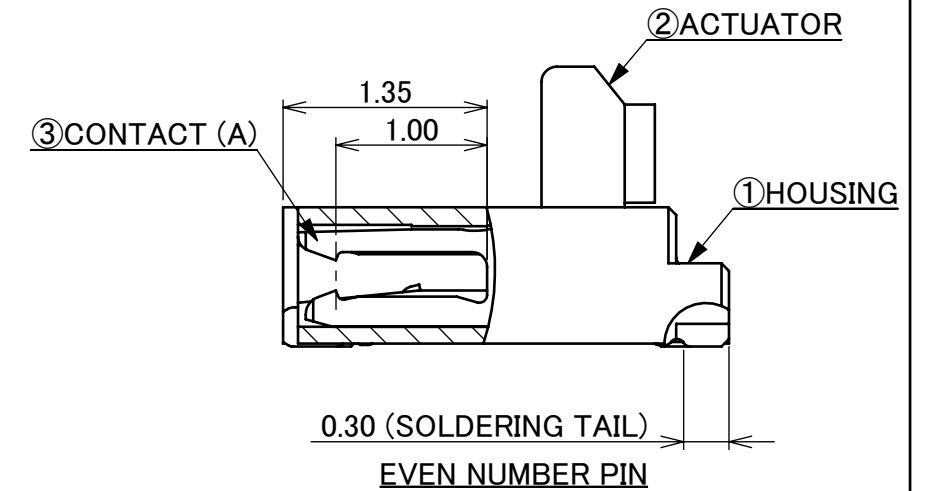
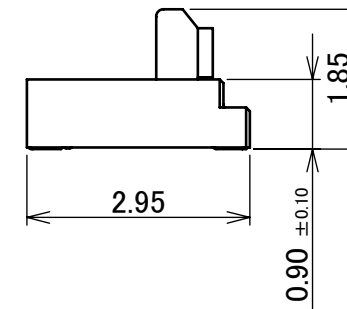
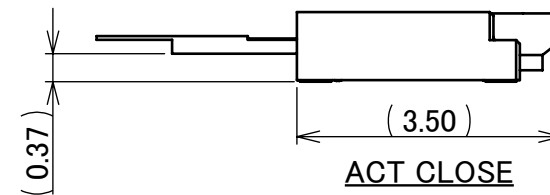


PART No.	Pos.	A	B	C	D	E	F
◆20660-031E-01	31P	11.40	8.40	9.00	9.65	10.00	10.25
20660-039E-01	39P	13.80	10.80	11.40	12.05	12.40	12.65
◆20660-071E-01	71P	23.40	20.40	21.00	21.65	22.00	22.25

◆MARK MEANS NOT AVAILABLE.



NOTES.  
1. CONTACT POINT: TOP AND BOTTOM CONTACT

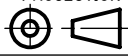
5	HOLD DOWN	BRASS	
4	CONTACT(B)	PHOSPHOR BRONZE	CONTACT AREA : Au 0.1 μm MIN. OVER Ni 1.0 μm MIN. SOLDERING AREA : Au 0.03 μm MIN. OVER Ni 1.0 μm MIN.
3	CONTACT(A)	PHOSPHOR BRONZE	CONTACT AREA : Au 0.1 μm MIN. OVER Ni 1.0 μm MIN. SOLDERING AREA : Au 0.03 μm MIN. OVER Ni 1.0 μm MIN.
2	ACTUATOR	LCP	UL94V-0, BEIGE
1	HOUSING	LCP	UL94V-0, BEIGE
NO.	DISCRIPTION	MATERIAL	REMARKS

6	Z200554	M.M	May./29/'20	Y.S	ANGLE	±2°	6 OVER 30 MAX.	±0.3	PROJECTION SERIES No. R3	CUSTOMER COPY		
5	Z191249	S.Sh	Sept./18/'19	H.I	6 MAX.	±0.2	30 OVER 120 MAX.	±0.5				
4	Z181441	M.M	Nov./05/'18	Y.S	GENERAL TOLERANCE.				TITLE MINIFLEX® 3-BFNH L-HD TYPE	SCALE 10:1 UNIT mm SIZE A3		
3	Z180998	M.M	Aug./21/'18	Y.S	DWG.	M.Muro	DATE	Nov./30/'15				
2	Z161218	H.A	Oct./06/'16	Y.S	CHK.		DATE					
1	Z160606	M.M	Jan./02/'16	Y.S	APP.	Y.Shimada	DATE	Nov./30/'15				
REV.	ECN	BY	DATE	APP.	APP.	DATE	DWG. No.	20660	SHEET	1/5	REV.	6

CAUTION VISIT OUR WEBSITE FOR LATEST VERSIONS OF INSTRUCTION MANUAL NO. HIM-14004 TO HANDLE THE PRODUCT PROPERLY AND SAFELY.

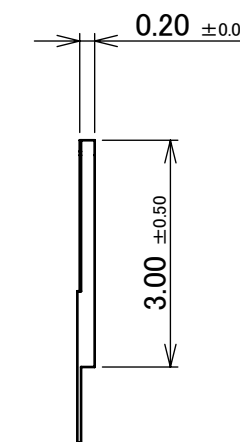
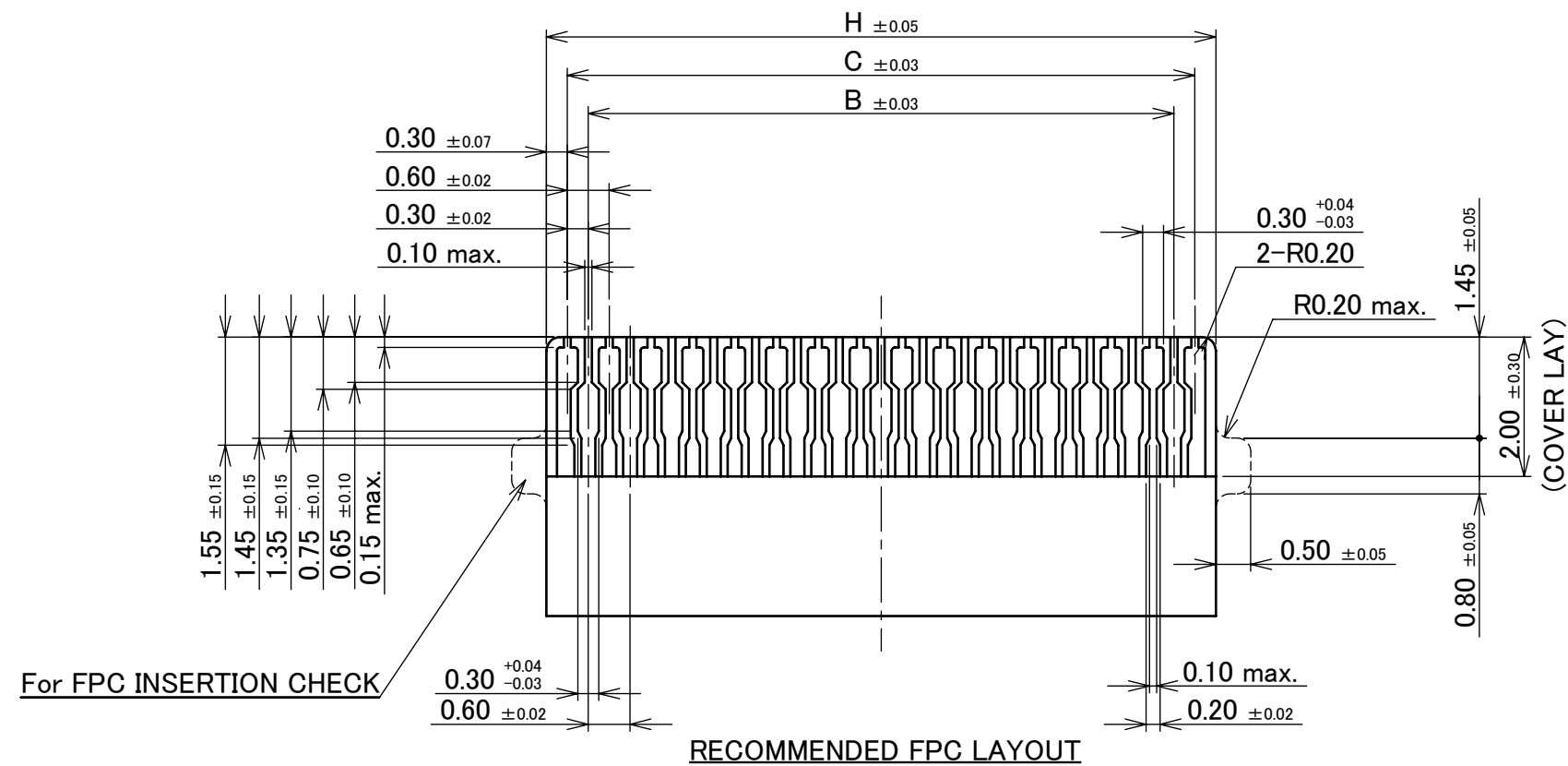
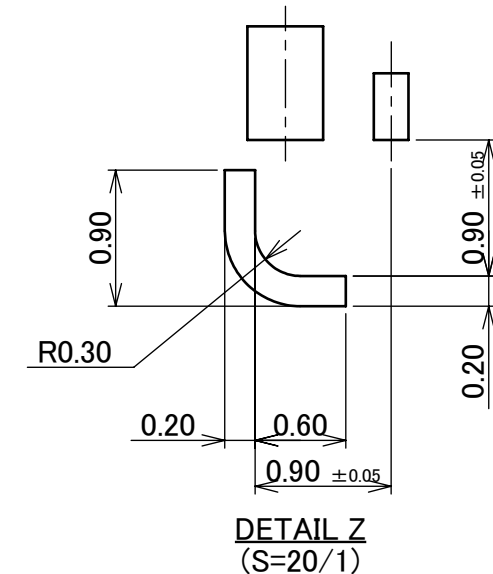
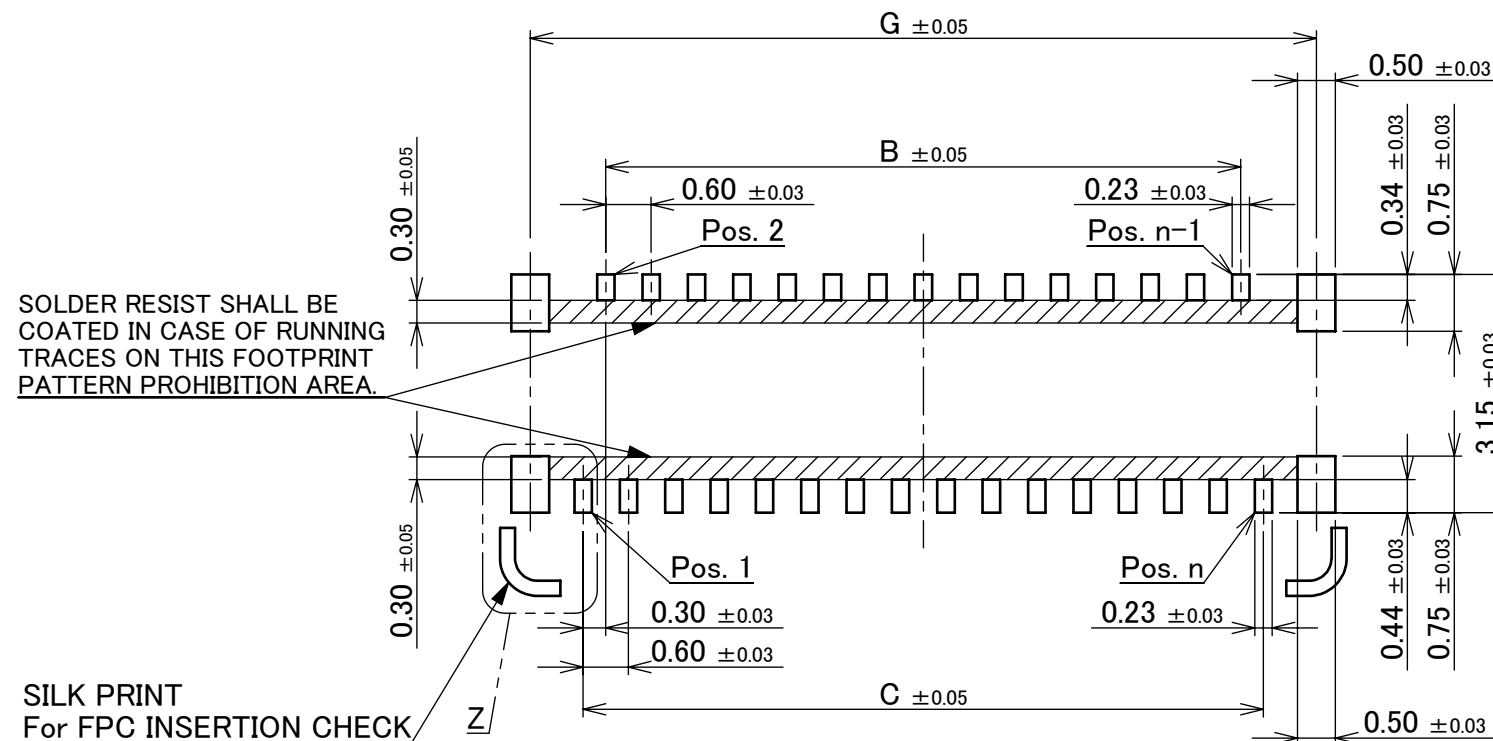
ITEMS	SPECIFICATION
RATING VOLTAGE	50V AC/DC (PER CONTACT)
RATING AMPERAGE	0.3A DC (PER CONTACT)
OPERATING TEMPERATURE	233~358K(-40°C~+85°C)
OPERATING HUMIDITY	85% MAX.(NON-CONDENSING)
CONTACT RESISTANCE	INITIAL : 60mohm MAX. / AFTER TEST : $\triangleleft$ 40mohm MAX.
INSULATION RESISTANCE	100Mohm MIN.
DIELECTRIC WITHSTANDING VOLTAGE	AC250V 1min
DURABILITY	20TH CYCLES
ACTUATOR LOCKING FORCE (INITIAL / 20TH CYCLES)	INITIAL : 0.245N(24.5gf) $\times$ n MAX. / 20TH CYCLES : 0.245N(24.5gf) $\times$ n MAX.
ACTUATOR UNLOCKING FORCE (INITIAL / 20TH CYCLES)	INITIAL : 0.014N(1.4gf) $\times$ n MIN. / 20TH CYCLES : 0.014N(1.4gf) $\times$ n MIN.
FPC RETENTION FORCE (INITIAL / AFTER TEST)	INITIAL : 0.13N(13gf) $\times$ n MIN. / AFTER TEST : 0.10N(10gf) $\times$ n MIN.
COPLANARITY	0.10 MAX.
PRODUCT SPECIFICATION	PRS-2073
TEST REPORT	TR-15025
PACKING STANDARD	PST-15042
INSTRUCTION MANUAL	HIM-14004
APPEARANCE CRITERIA No.	QLS-A***

※ "n" IS THE NUMBER OF PIN

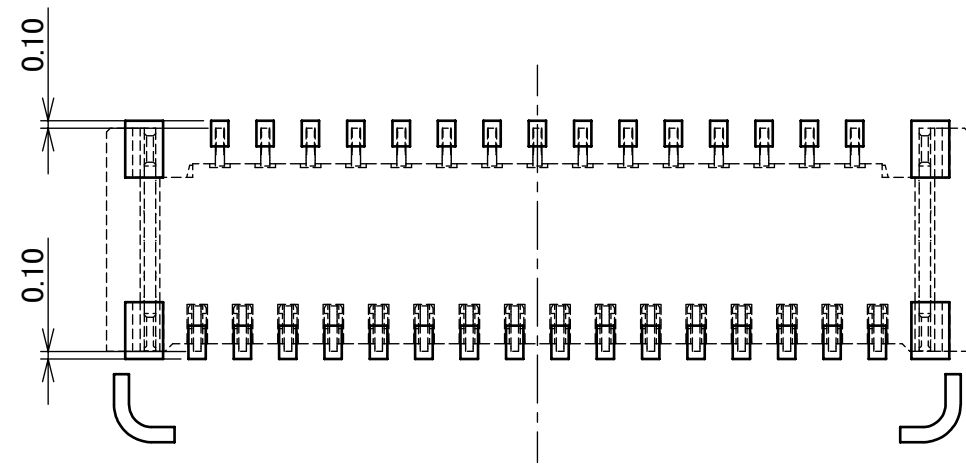
ANGLE	$\pm 2^\circ$	6 OVER 30 MAX.	$\pm 0.3$	PROJECTION 	SERIES No. R3	CUSTOMER COPY
	6 MAX.	$\pm 0.2$	30 OVER 120 MAX.			
GENERAL TOLERANCE.				TITLE MINIFLEX <sup>®</sup> 3-BFNH L-HD TYPE	SCALE	UNIT <b>I-PEX</b>
DWG.	DATE					
CHK.						
APP.						
				DWG. No.	20660	SIZE A3
				SHEET	2/5	REV. 6

PART No.	Pos.	B	C	G	H
◆20660-031E-01	31P	8.40	9.00	10.40	9.60
20660-039E-01	39P	10.80	11.40	12.80	12.00
◆20660-071E-01	71P	20.40	21.00	22.40	21.60

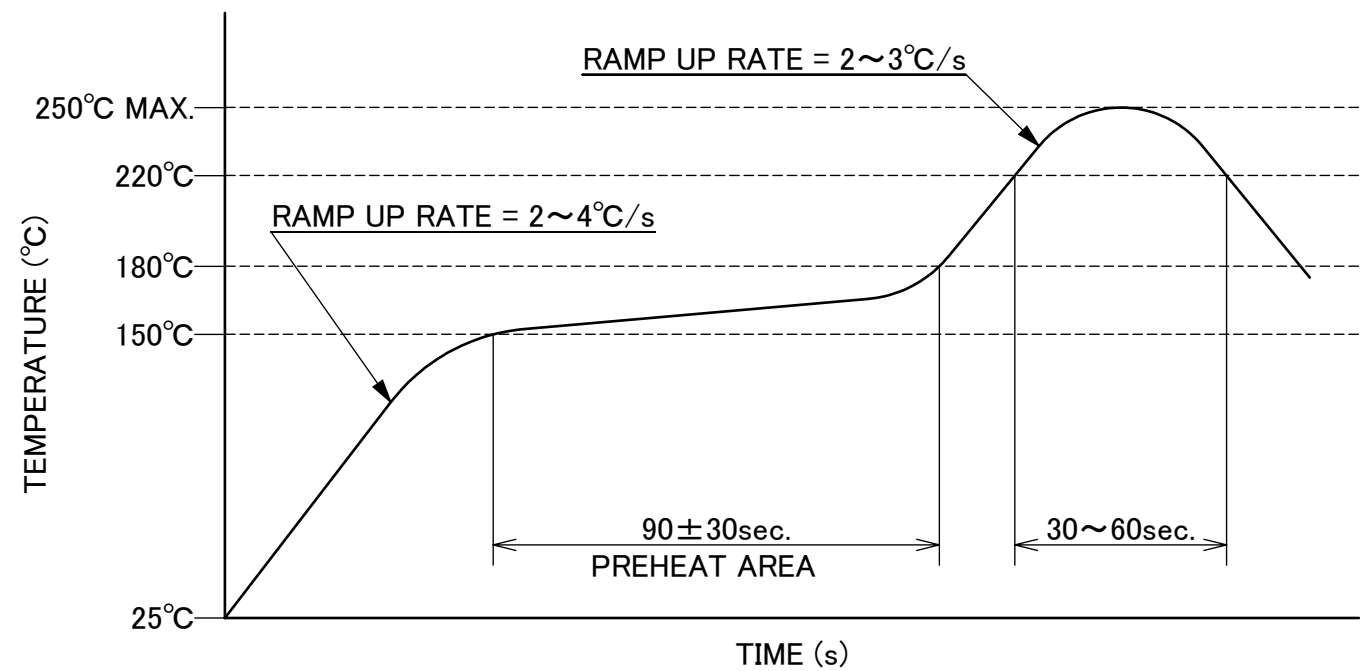
◆MARK MEANS NOT AVAILABLE.



ANGLE	±2°	6 OVER 30 MAX.	±0.3	PROJECTION	SERIES No.	CUSTOMER COPY
6 MAX.	±0.2	30 OVER 120 MAX.	±0.5		R3	
GENERAL TOLERANCE.				TITLE	SCALE	I-PEX
DWG.	DATE			MINIFLEX® 3-BFNH L-HD TYPE	10:1	
CHK.					UNIT	
APP.					mm	
				DWG. No.	SIZE	SHEET 3/5 REV. 6
				20660	A3	



CONNECTOR ON RECOMMENDED FOOTPRINT PATTERN

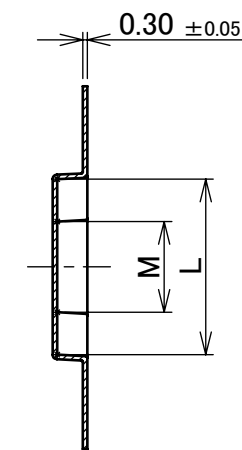
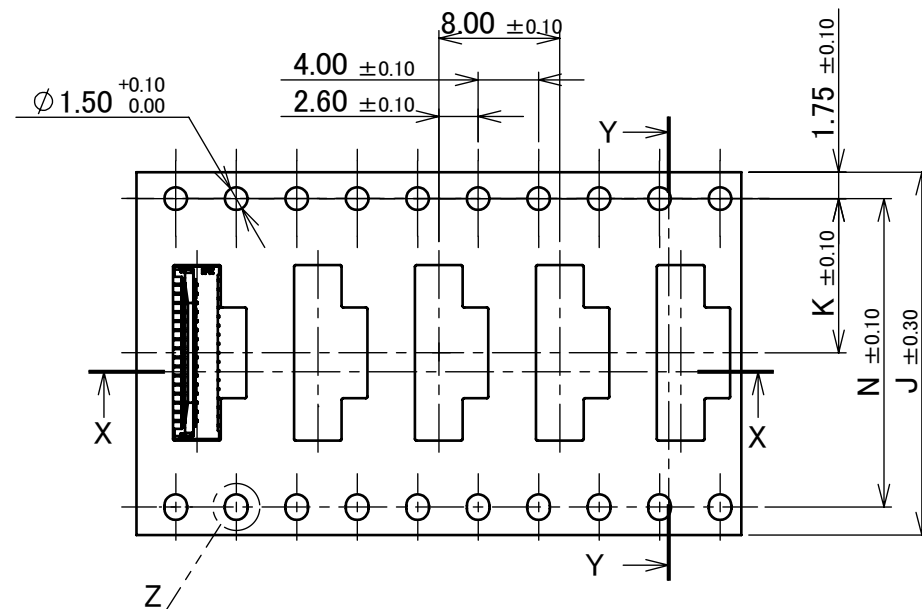
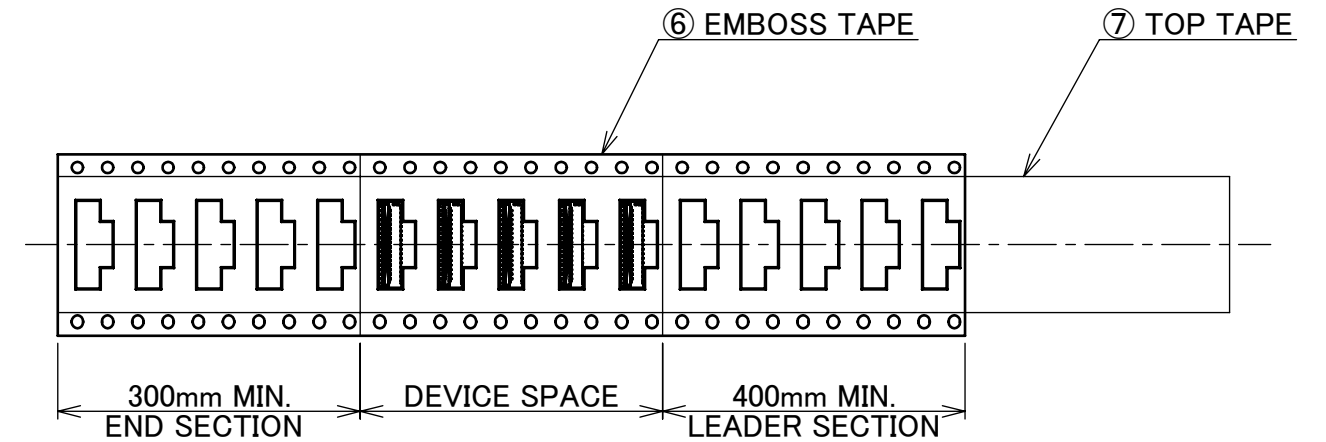
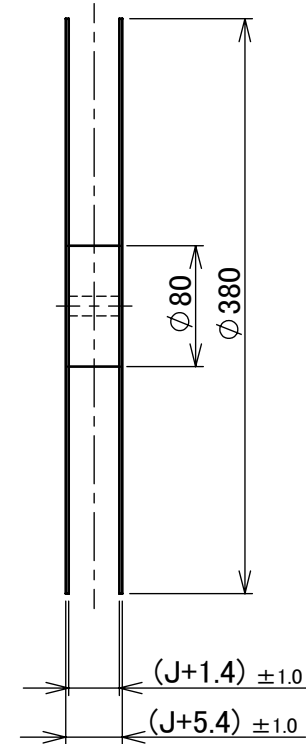
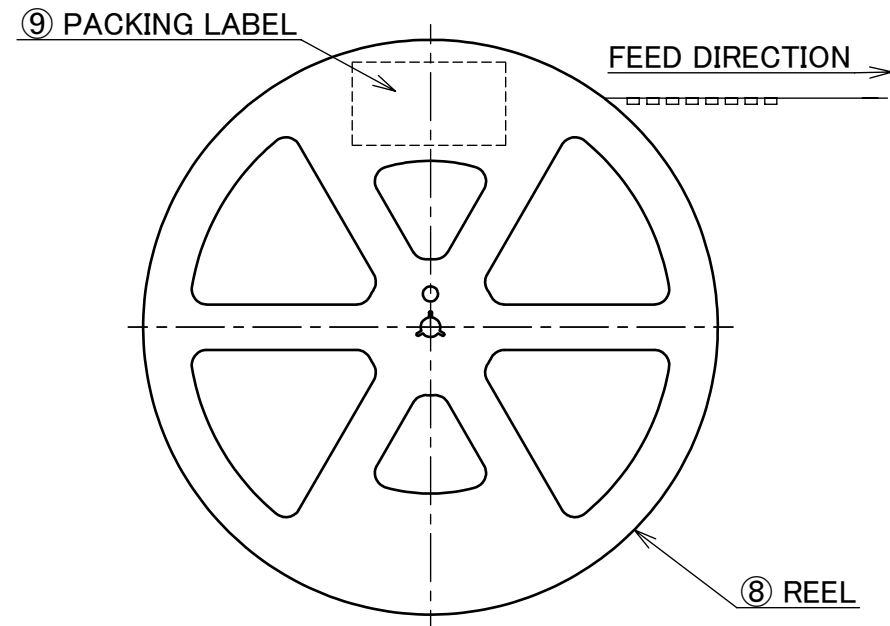


REFLOW TEMPERATURE PROFILE  
 SENJU METAL INDUSTRY CO., LTD. : M705-SHF(Sn96.5 Ag3.0 Cu0.5)

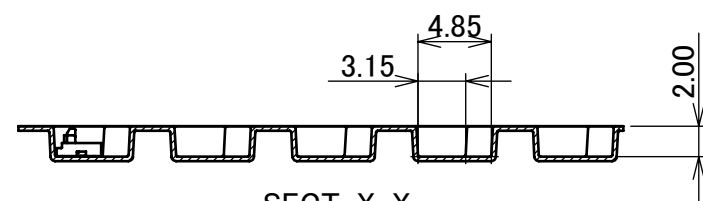
ANGLE	±2°	6 OVER 30 MAX.	±0.3	PROJECTION 	SERIES No. R3	CUSTOMER COPY	
6 MAX.	±0.2	30 OVER 120 MAX.	±0.5				
GENERAL TOLERANCE.				TITLE MINIFLEX® 3-BFNH L-HD TYPE	SCALE 10:1	UNIT <b>I-PEX</b>	
DWG.	DATE						
CHK.							
APP.							
				DWG. No.	20660	SIZE A3	SHEET 4/5 REV. 6

PART No.	J	K	L	M	N	QTY. PER EMBOSS REEL (PIECES / REEL)	QTY. PER PACKING CARTON (REELS / CARTON)
◆20660-031E-01	24.00	11.50	11.60	6.00	-	4000 PIECES / REEL	5 REELS / CARTON ( 20000 PIECES / CARTON )
20660-039E-01			14.00	8.00			
◆20660-071E-01	44.00	20.20	23.60	10.00	40.40	4000 PIECES / REEL	3 REELS / CARTON ( 12000 PIECES / CARTON )

◆MARK MEANS NOT AVAILABLE.



SECT. Y-Y



SECT. X-X

NOTES.

- TAPING SPECIFICATION FOLLOWS JIS C 0806 (IEC 60286-3).
- MAKE EMPTY SECTION OF LEADER AND END ON EACH END OF THE TAPE.
- TOP TAPE SHALL NOT STICK OUT FROM EMBOSS TAPE.
- TOP TAPE SHALL NOT COVER FEED HOLE.

NO.	DISCRIPTION	MATERIAL	FINISH , REMARKS
9	PACKING LABEL	-	-
8	REEL	PS	BLACK
7	TOP TAPE	PET $t=0.062$ TRANSPARENCY	ANTI-STATIC TYPE
6	EMBOSS TAPE	PS $t=0.3$ TRANSPARENCY	ANTI-STATIC TYPE

ANGLE	$\pm 2^\circ$	6 OVER 30 MAX.	$\pm 0.3$	PROJECTION	SERIES No.	CUSTOMER COPY
6 MAX.	$\pm 0.2$	30 OVER 120 MAX.	$\pm 0.5$		R3	
GENERAL TOLERANCE.				TITLE	SCALE	
DWG.	DATE		MINIFLEX® 3-BFNH L-HD TYPE	UNIT		
CHK.				mm		
APP.			DWG. No. 20660	SIZE		
					A3	SHEET 5/5 REV. 6