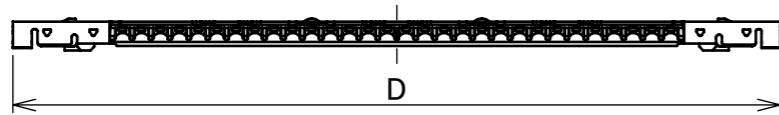
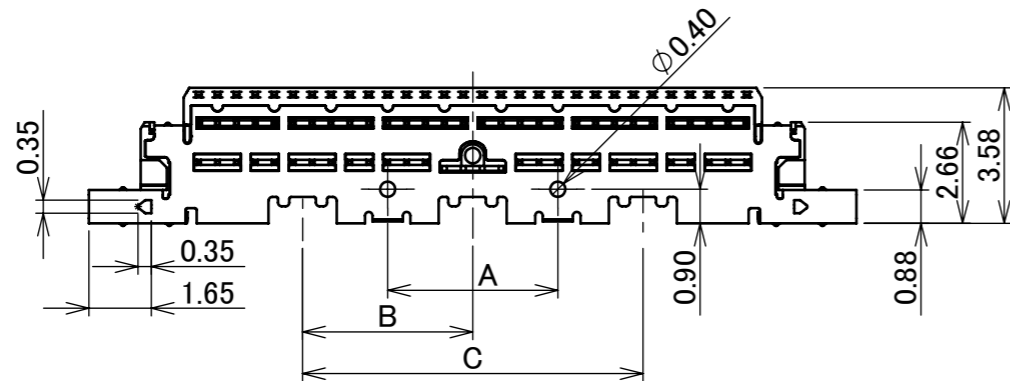


Recommended P/N 20847-0**T-01

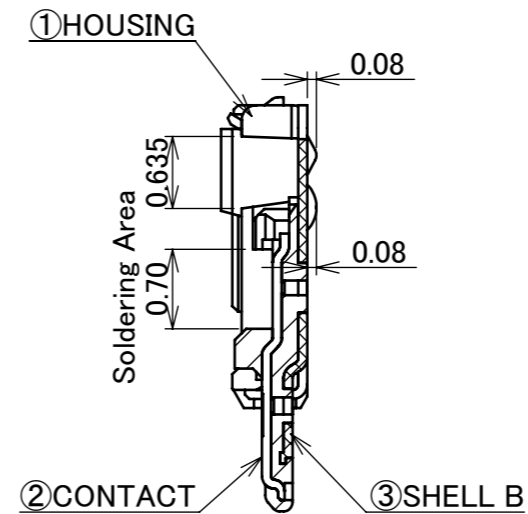
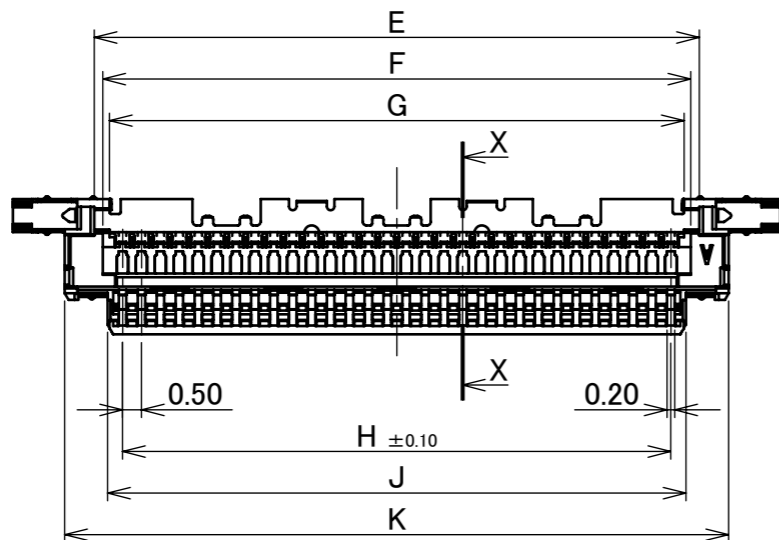
PART NO.	Pos.	A	B	C	D	E	F	G	H	J	K
20847-020T-0#	20	-	-	5.00	15.30	11.00	10.55	10.20	9.50	10.30	12.56
20847-030T-0#	30	4.50	4.50	9.00	20.30	16.00	15.55	15.20	14.50	15.30	17.56
20847-040T-0#	40	9.00	4.50	13.50	25.40	21.00	20.55	20.20	19.50	20.30	22.56



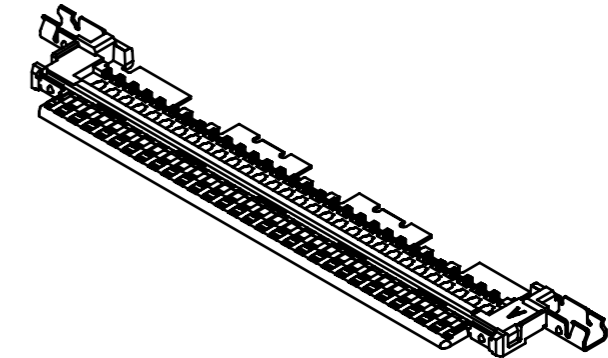
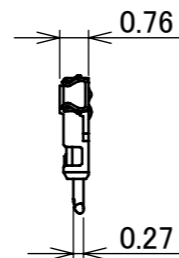
BOTTOM VIEW



TOP VIEW



SECT. X-X
(S=15/1)



NOTES.

1. THIS PART IS ASSEMBLED WITH SHELL A(P/N 3427-0**1) AND LOCK BAR ASS'Y(P/N 20848-0**T-01) AFTER SOLDERING THE CABLE, AND SHALL BE ASSIGNED AS P/N 20846-0**T-0#

TABLE.1

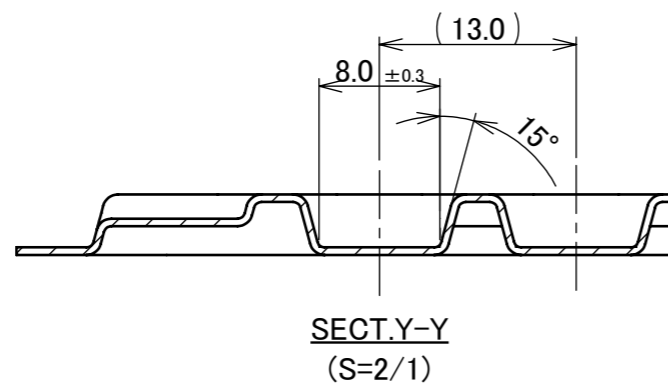
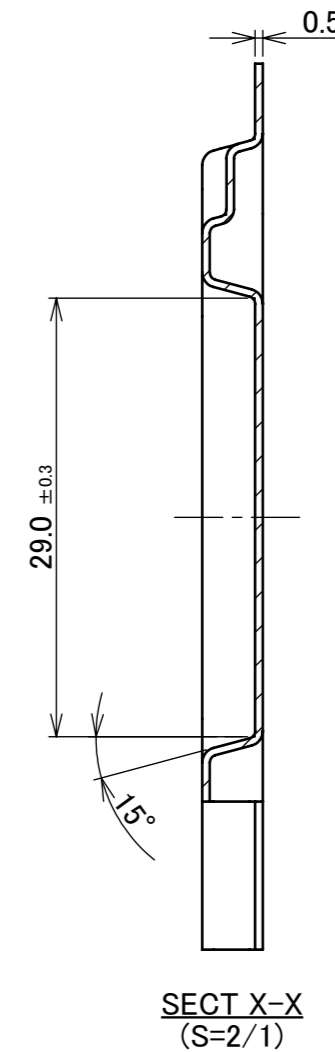
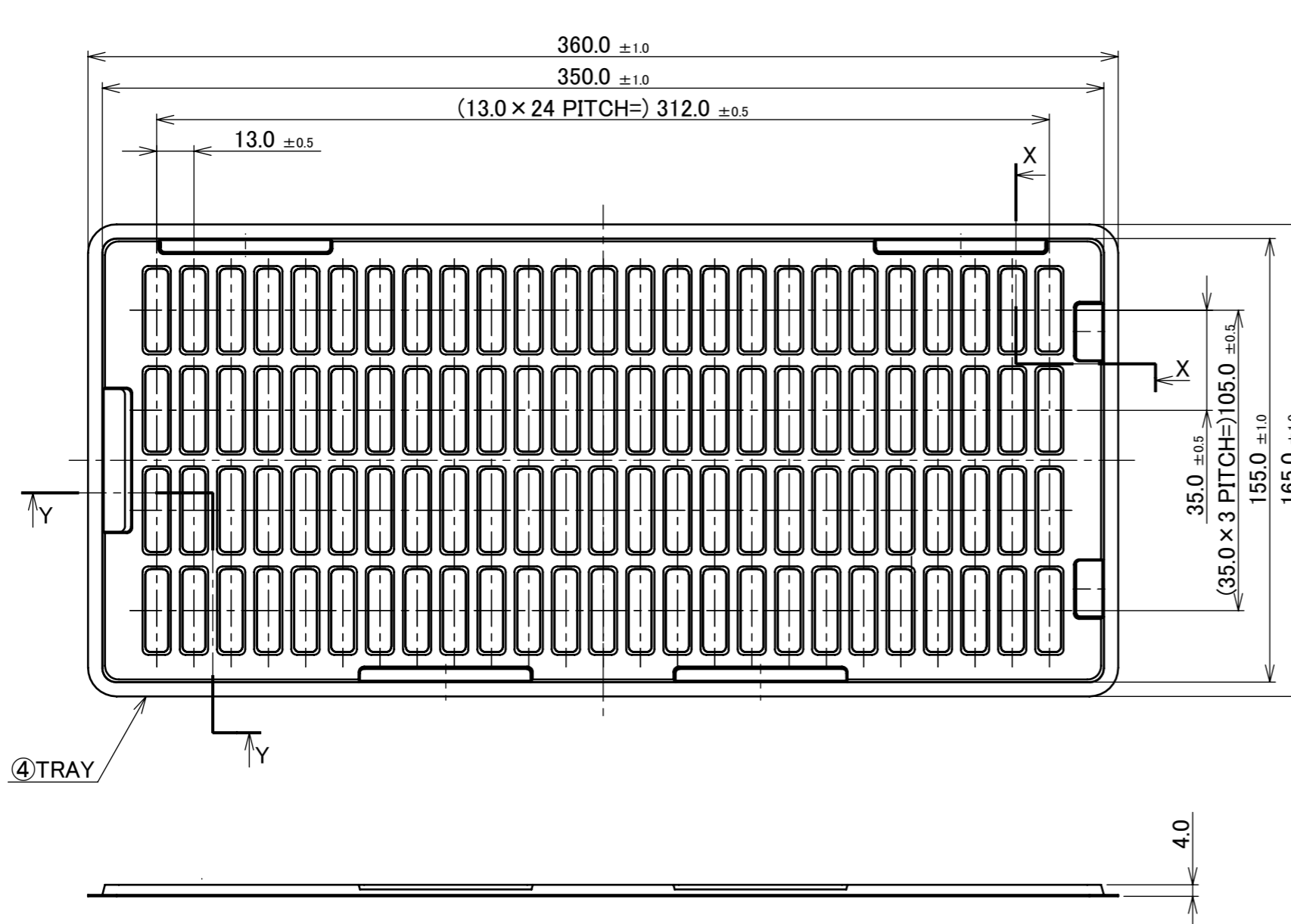
PART NO.	CONTACT FINISH
20847-0**T-01	CONTACT & SOLDERING AREA : Au 0.03 μm MIN. OVER Ni 1.00 μm MIN.
20847-0**T-02	CONTACT AREA : Au 0.38 μm MIN. OVER Ni 1.27 μm MIN. SOLDERING AREA : Au 0.03 μm MIN. OVER Ni 1.00 μm MIN.

NO.	DISCRIPTION	MATERIAL	FINISH , REMARKS
3	SHELL-B	PHOSPHOR BRONZE	PARTIAL Au 0.003 μm MIN. OVER Ni 1.00 μm MIN.
2	CONTACT	PHOSPHOR BRONZE	SEE TABLE 1
1	HOUSING	LCP	UL94V-0, BLACK

REV.	ECN	BY	DATE	APP.	DATE	DWG. No.	20847	SIZE	A3	SHEET	1/2	REV.	6		
6	Z191437	R.M	Nov./04/'19	H.I	ANGLE ±2°	6 OVER 30 MAX.	±0.3	PROJECTION	⊕	SERIES No.	R2	CUSTOMER COPY			
5	Z191128	M.N	Aug./27/'19	H.I	6 MAX. ±0.2	30 OVER 120 MAX.	±0.5								
4	Z181036	K.B	Aug./06/'18	Y.S	GENERAL TOLERANCE.			TITLE	CABLIN [®] -VS II		SCALE	5:1			
3	Z180939	K.B	July/19/'18	Y.S	DWG.	DATE		K.Baba	2017/07/25	PLUG HOUSING ASS'Y		UNIT	I-PEX		
2	Z171377	K.B	Nov./24/'17	Y.S	CHK.	DATE						mm			
1	Z171217	K.B	Oct./23/'17	Y.S	T.Kurachi	2017/07/25									
REV.	ECN	BY	DATE	APP.	APP.	DATE		DWG. No.	20847	SIZE	A3	SHEET	1/2	REV.	6

PATENT REGISTERED

PART NO.	QTY. IN DITCH (PIECES / DITCH)	QTY. IN TRAY (PIECES / TRAY)	QTY. IN SHIPPING CARTON (TRAY / S CARTON)	QTY. IN PACKING CARTON (S CARTON / P CARTON)	PACKING STANDARD
20847-020T-0#	1	100 / TRAY	20 / S CARTON = 2000	4 / P CARTON = 8000	PST-17076
20847-030T-0#					
20847-040T-0#					



4	TRAY	PP	ANTI-STATIC TYPE
NO.	DISCRIPTION	MATERIAL	FINISH , REMARKS
ANGLE	±2°	6 OVER 30 MAX.	±0.3
6 MAX.	±0.2	30 OVER 120 MAX.	±0.5
GENERAL TOLERANCE.		PROJECTION	SERIES No.
DWG.	DATE	⊕	R2
CHK.	DATE	TITLE	
APP.	DATE	CABLIN [®] -VS II	
		DWG. No.	SCALE
		20847	1:2
			UNIT
			mm
			SIZE
			A3
			SHEET 2/2
			REV. 6