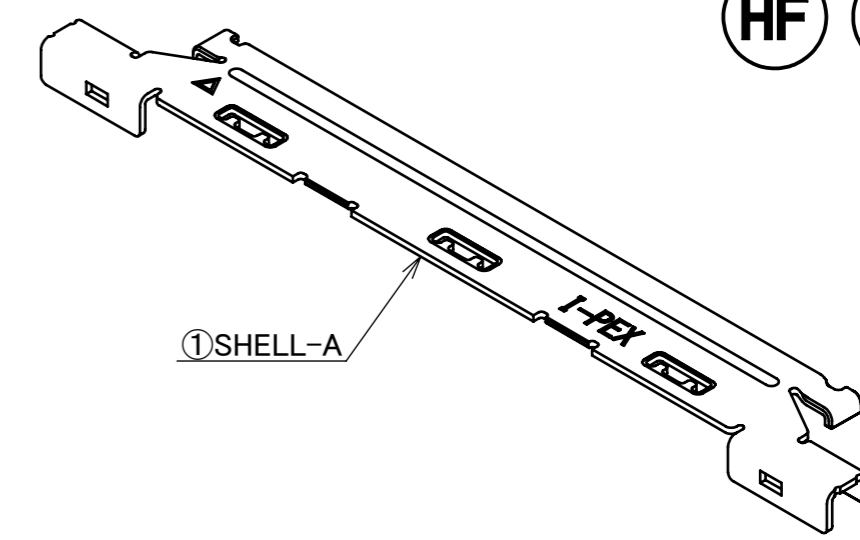


Recommended P/N

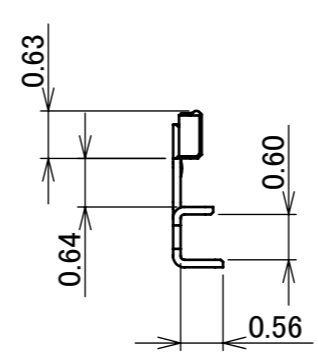
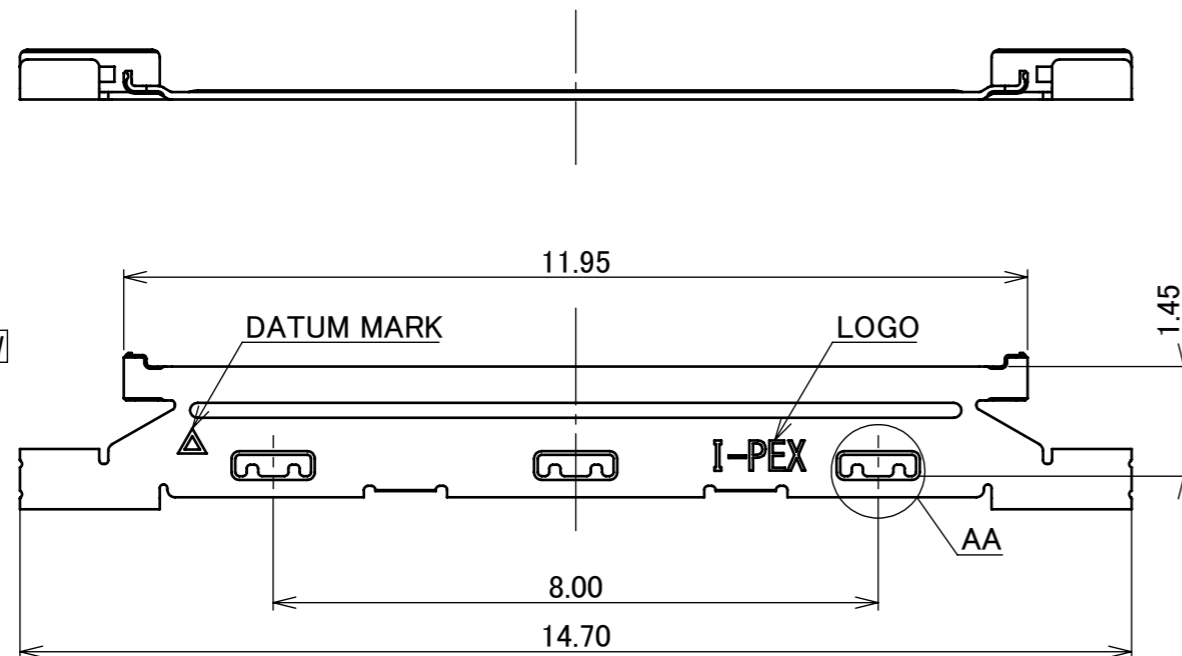
3655-0401

PART No.

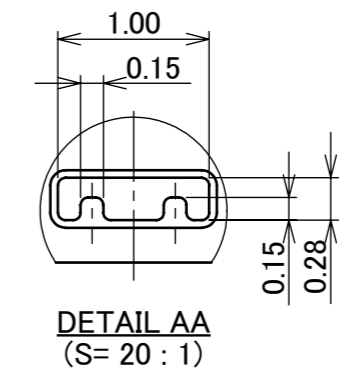
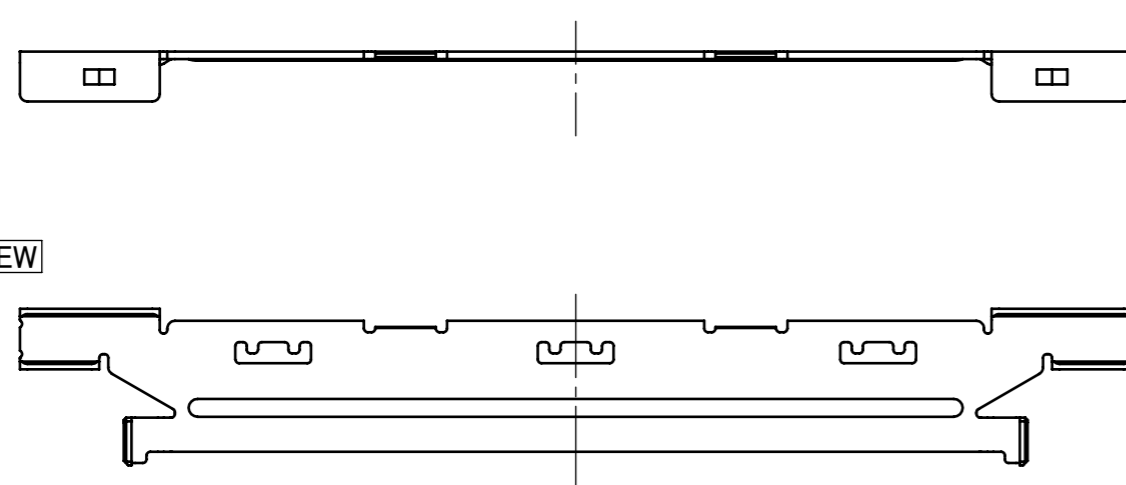
3655-0401



TOP VIEW



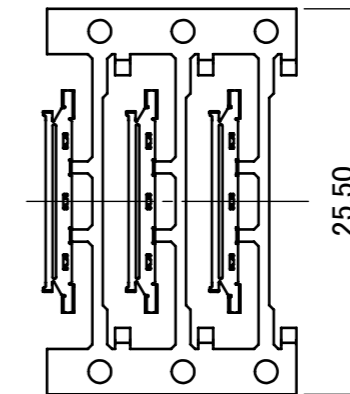
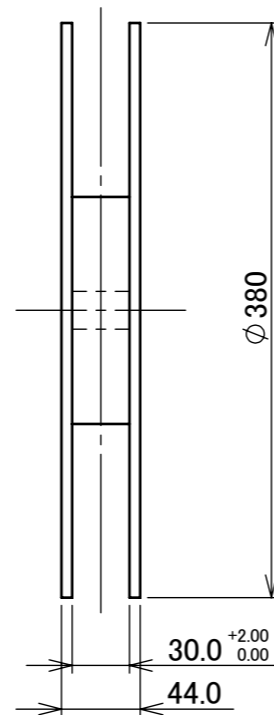
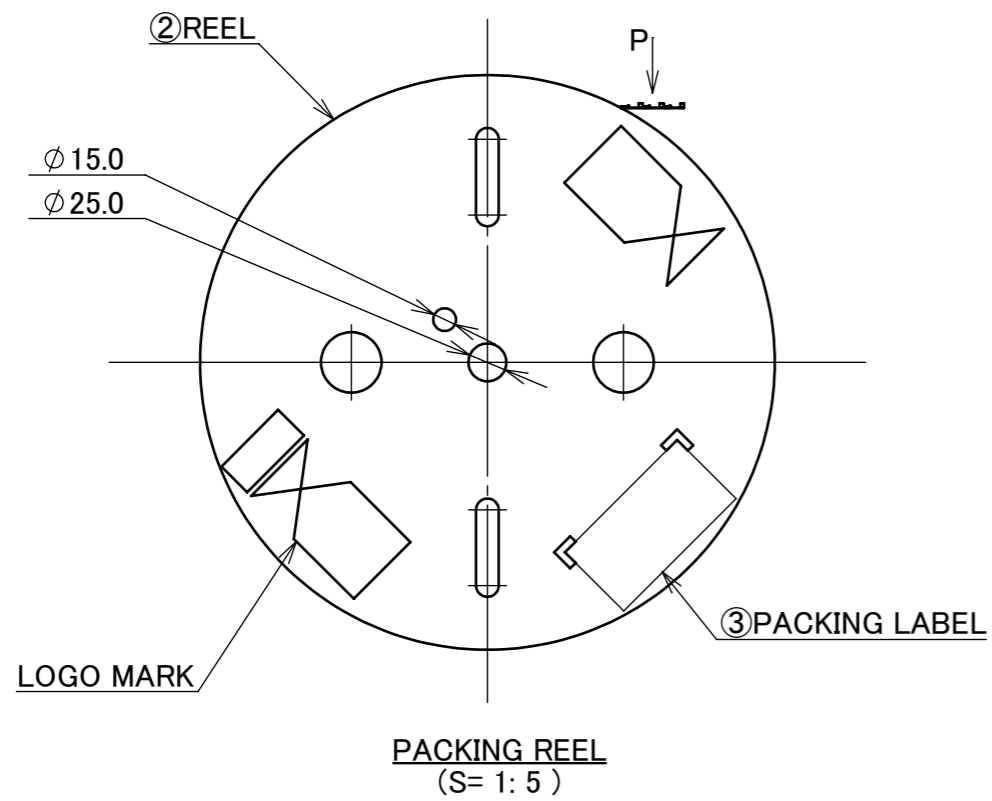
BOTTOM VIEW



1	SHELL-A	SUS	PARTIAL Au 0.003 μ m MIN. OVER Ni 1.0 μ m MIN.
NO.	DISCRIPTION	MATERIAL	FINISH , REMARKS

					ANGLE	±2°	6 OVER 30 MAX.	±0.3	PROJECTION	SERIES No.	CUSTOMER COPY		
						6 MAX.	±0.2	30 OVER 120 MAX.	⊕	R0			
					GENERAL TOLERANCE.				TITLE		SCALE		
					DWG.	S.Yamaguchi		DATE	CABLIN <sup>®</sup> -CX II		10:1		
					CHK.	T.Kurachi		DATE	PLUG SHELL A		UNIT		
0	Z191044	S.Y	Aug./08/'19	APP.	Y.Shimada		DATE	DWG. No.		mm	I-PEX		
REV.	ECN	BY	DATE	APP.	Y.Shimada		DATE	3655		SIZE			
REVISION RECORD											A3	SHEET 1/2	REV. 0

PART No.	Pos.	QTY. PER REEL (PIECES / REEL)	QTY. PER REEL (REELS / CARTON)	PACKING STANDARD
3655-0401	40	10,000 / REEL	3 / CARTON =30,000	PST-17125



VIEW P  
(S= 2:1)

NO.	DISCRIPTION	MATERIAL	FINISH , REMARKS
3	PACKING LABEL	-	-
2	PACKING REEL	EPE	-

ANGLE	±2°	6 OVER 30 MAX.	±0.3	PROJECTION	SERIES No.	CUSTOMER COPY		
6 MAX.	±0.2	30 OVER 120 MAX.	±0.5		R0	I-PEX		
GENERAL TOLERANCE.				TITLE		SCALE	I-PEX	
DWG.	DATE		CABLIN <sup>®</sup> -CX II		1:X			
CHK.	DATE		PLUG SHELL A		mm			
APP.	DATE		DWG. No.	3655	SIZE			
						A3	SHEET 2/2	REV. 0