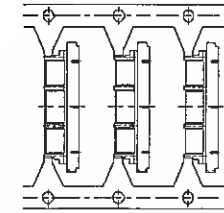


PART NO.	A	B	C	D	E	F	G	H	QTY./REEL	LEAD FREE
◆2213-020•F	9.9	8.75	2.5	11.1	12.1	22.0	30.0	—	3000	YES
◆2213-030•F	14.9	13.75	7.0	16.1	17.1	29.0	32.0	450	3000	
2213-040•F	19.9	18.75	10.0	21.1	22.1	34.0	38.0	450	3000	
◆2213-050•F	24.9	23.75	13.0	26.1	27.1	39.0	45.0	380	3000	

\*EXAMPLE  
P/N: 2213-0\*\*\*F

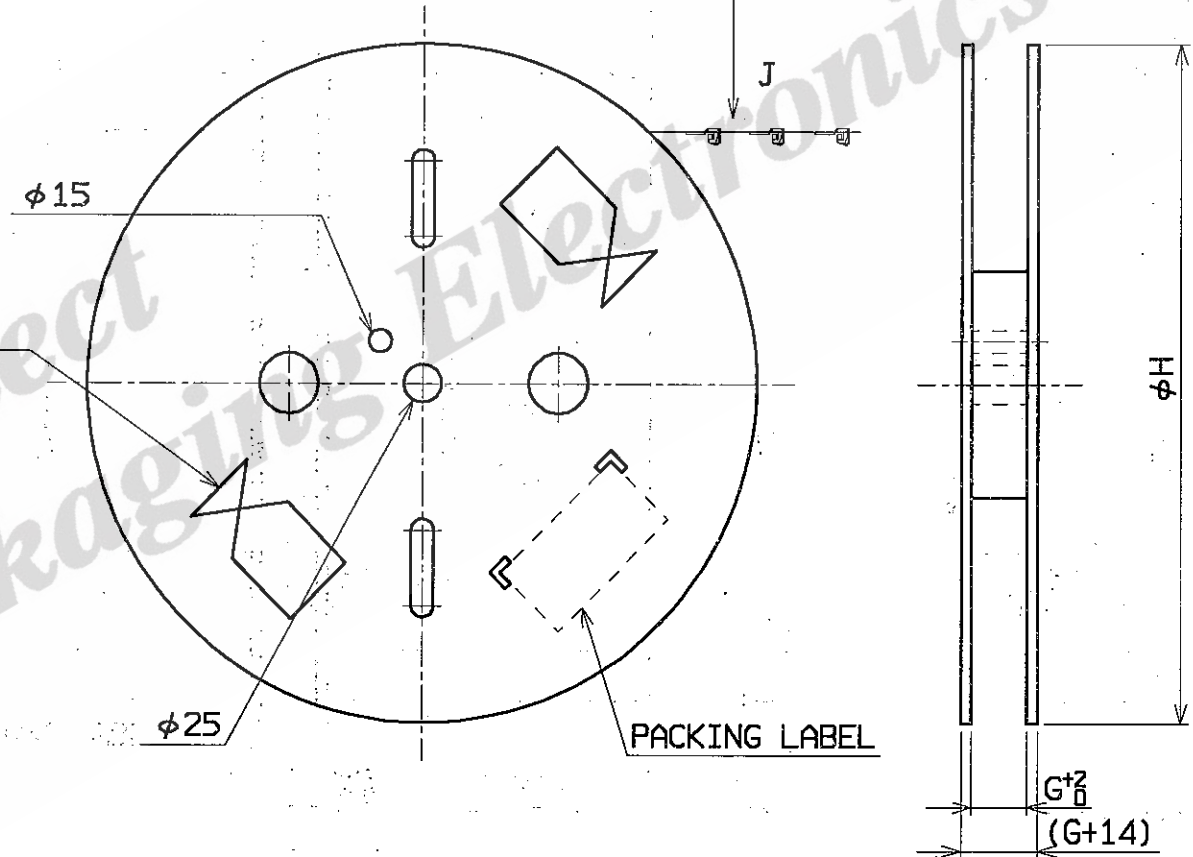
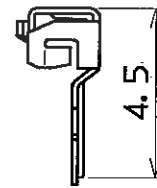
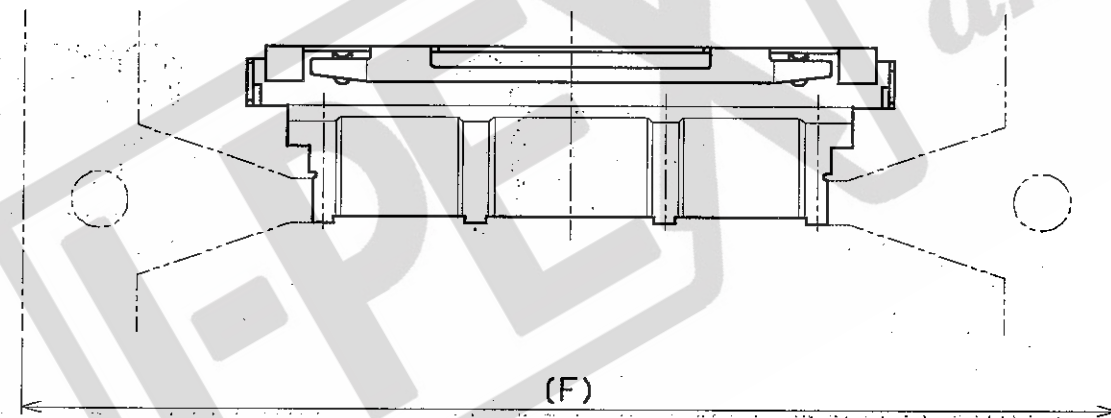
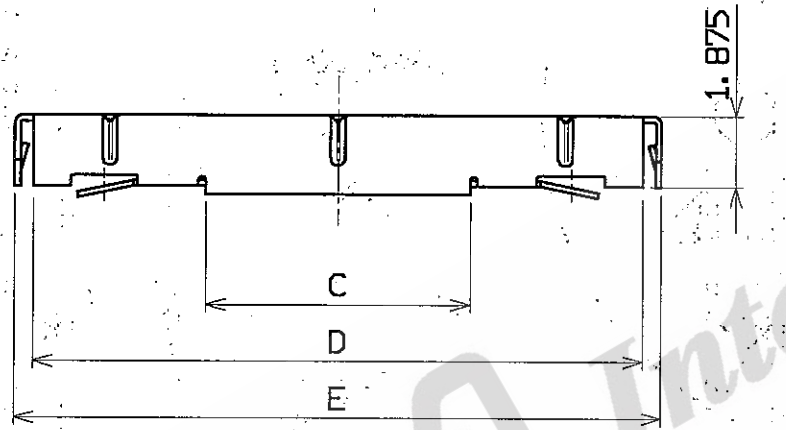
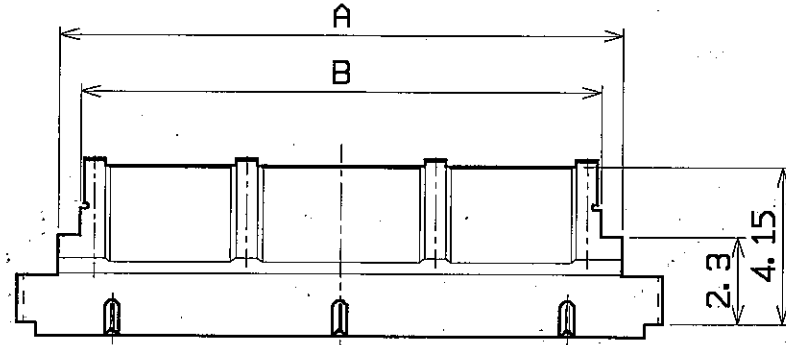
1: WITH NOTCH  
2: WITHOUT NOTCH



VIEW J

ROLL UP DIRECTION

◆ MARK MEANS UNDER DEVELOPING.



PACKING REEL  
(S=1/5)

NOTE  
1. MATERIAL  
COPPER ALLOY  
2. FINISH  
Sn PLATING

GENERAL TOLERANCE	
6 MAX.	±0.2
6 OVER MAX. 30	±0.3
30 OVER MAX. 120	±0.5
ANGLE	±2°

FORM REV. 4

DESIGN D BY <i>T. Karachi</i>	DATE <i>Aug/31/04</i>	<b>I-PEX</b> Interconnect and Packaging Electronics TOKYO, JAPAN
CHK'D BY <i>Y. H.</i>	DATE <i>Sep. 1. 04</i>	
REV ECN BY DATE APP <i>0 204308 T.K Aug/31/04</i>	APP'D BY DATE <i>J. Horie Sep/03/04</i>	TITLE DUALCOAX RECE. H TYPE SHELL A
REV. RECORD	CUSTOMER COPY	PROJECTION 
SERIES No.	SCALE 5/1	UNIT MM
	DWG. No. 2213	SHEET 1/1
		REV. 0

WAS T